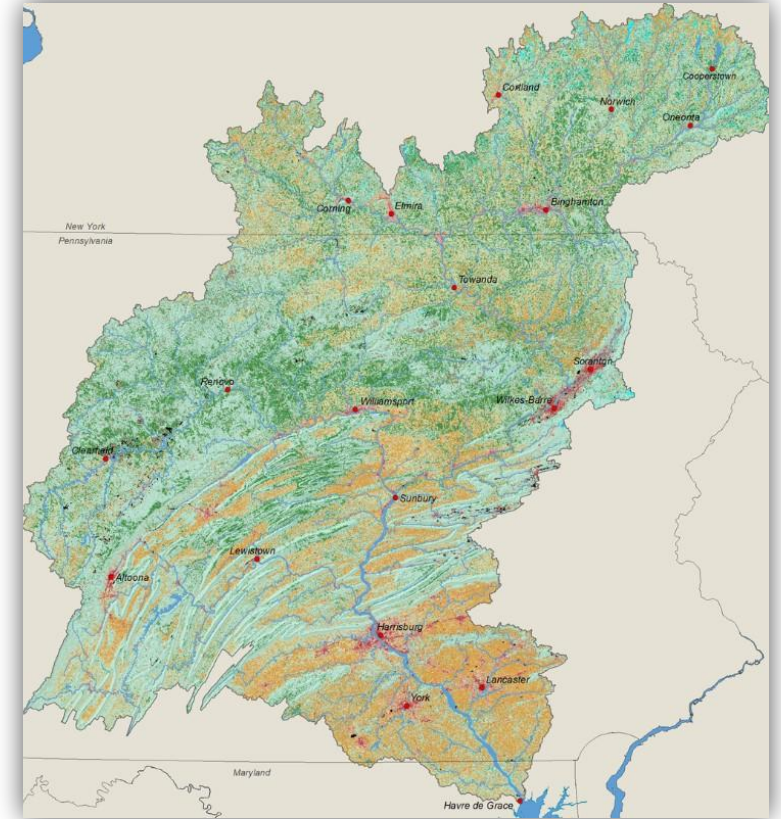


Jamie Shallenberger

Susquehanna River Basin Commission



Topics for Today

1. Focus on 4 Kinds of Aquatic Resources:

- ☐ Migratory Fish
- ☐ Aquatic Invasive Species
- ☐ Recreational/Game Fishes
- ☐ Non-game Species

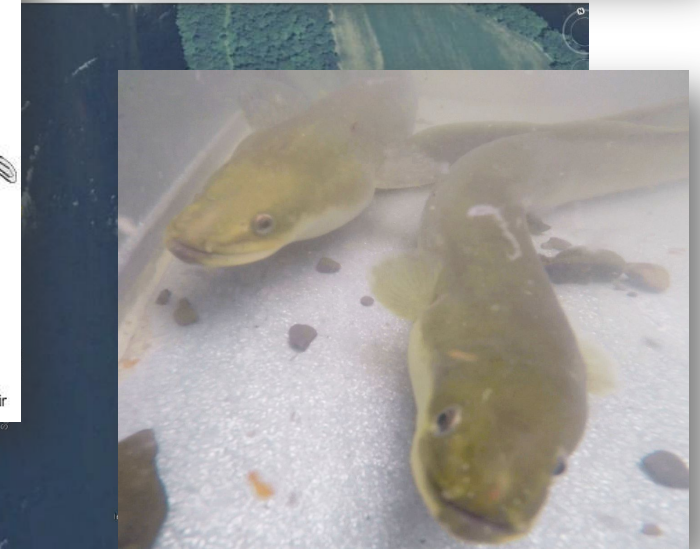
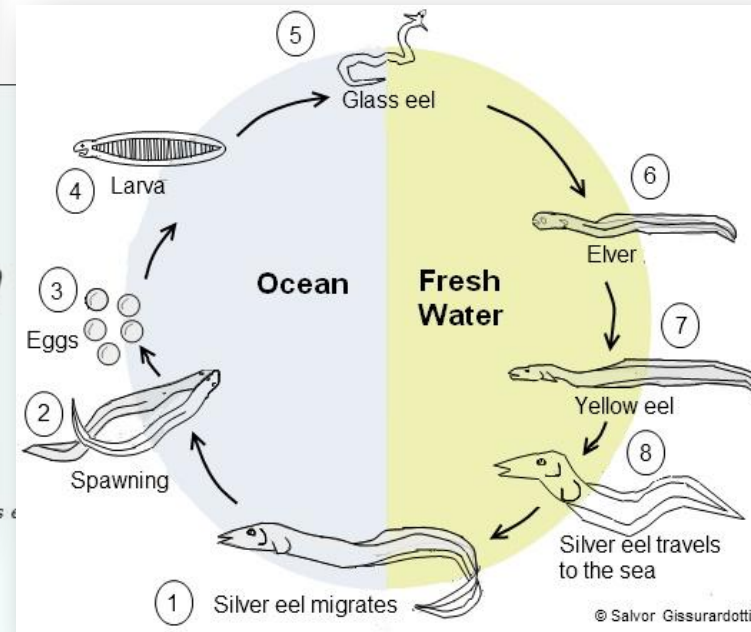
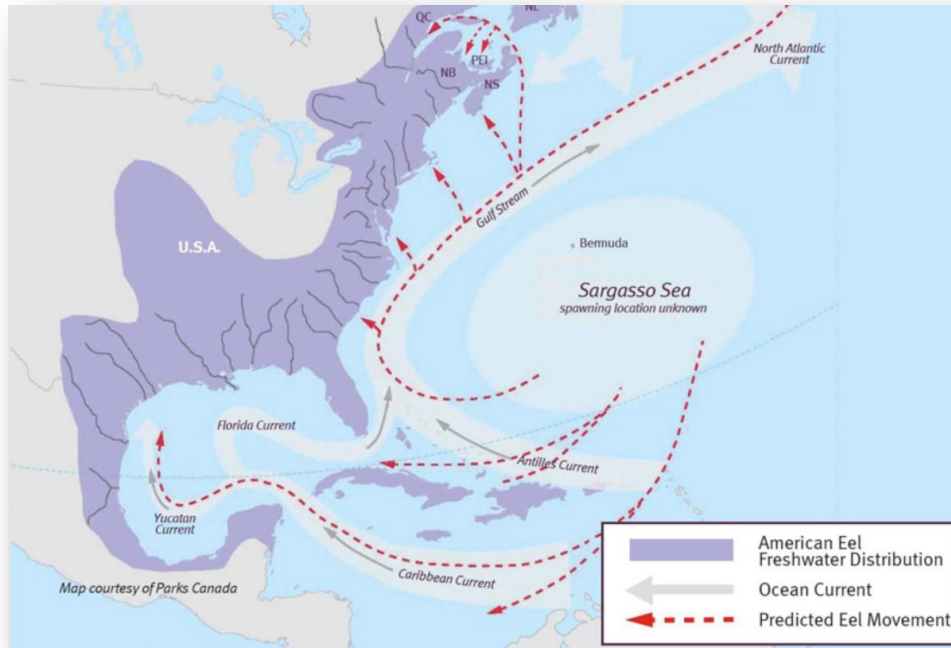
2. Quick Review of Susquehanna History

3. Impediments to Aquatic Life

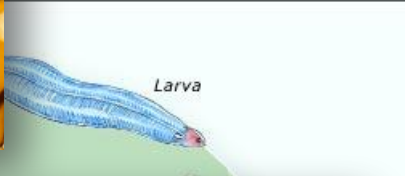
4. What does this mean for LGAC



Migratory Fish | American Eel



Aquatic Invasive Species | Rusty Crayfish ♦ Snakehead ♦ Flathead Catfish



Recreational/Game Fish | Trout ♦ Smallmouth Bass ♦ Flathead Catfish





Belted Kingfisher | Andy Morffew



A Neosho mucket mussel and its lure



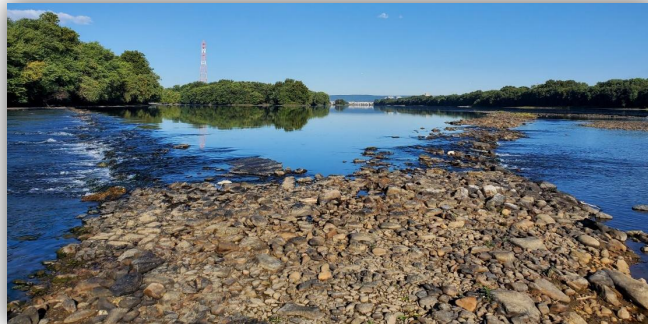
Chesapeake Logperch



Hellbender | Brandywine Conservancy

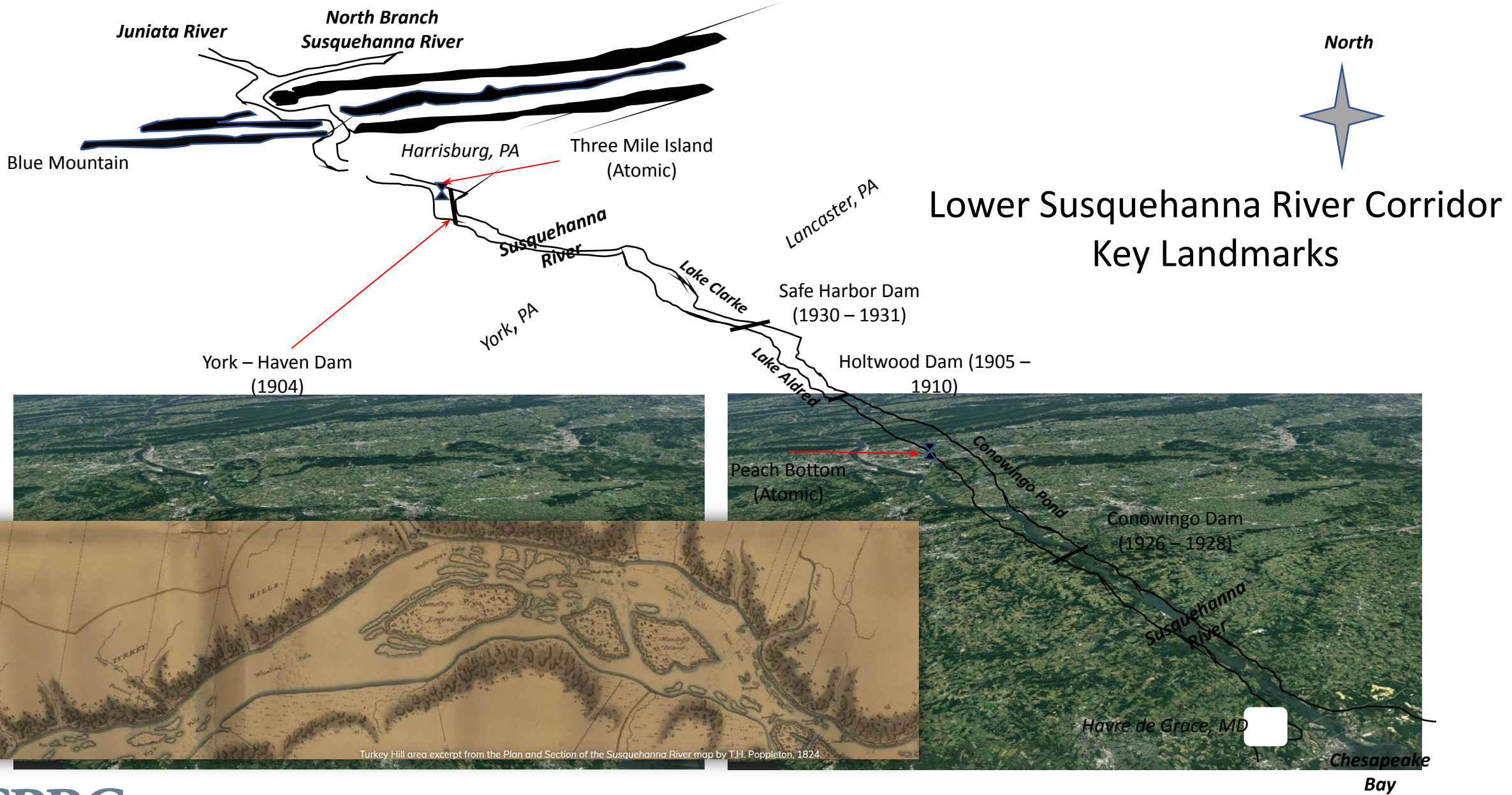
Historical Perspective

Conditions Precolonial & Contemporary
Lower Manhattan | Welikia Project



One of the last operating eel weirs on the
Susquehanna River (ca: 1955) | Bill Simcox

Humans have lived in and re-shaped the Susquehanna
River Basin for Thousands of Years



Impediments to Aquatic Life

1. Barriers
2. Pollution
3. Habitat
4. Diminished Biodiversity



Collecting dead eels below York – Haven Powerhouse



Conowingo Dam & Lower Reservoir | Chesapeake Bay Magazine



Abandoned Mine Discharge | Acids & Toxic Metals



Manure, fertilizer, pesticide in runoff from agricultural



Road Salt



Cement-Lined Channel



What Do Living Resources for the Bay Watershed Mean to You?

We talked about:

❖ Types of Resources

- ☐ Migratory Fish
- ☐ Aquatic Invasive Species
- ☐ Recreational/Game Fishes
- ☐ Non-game Species

❖ Humans reshaping the Landscape & Rivers

❖ Impediments to Healthy Aquatic Environment



Thank you!

Jamie Shallenberger
Monitoring & Protection Program Manager

Susquehanna River Basin Commission
4423 North Front Street
Harrisburg, PA 17110
717-238-0423 X 1115
jshallenberger@srbc.net

