

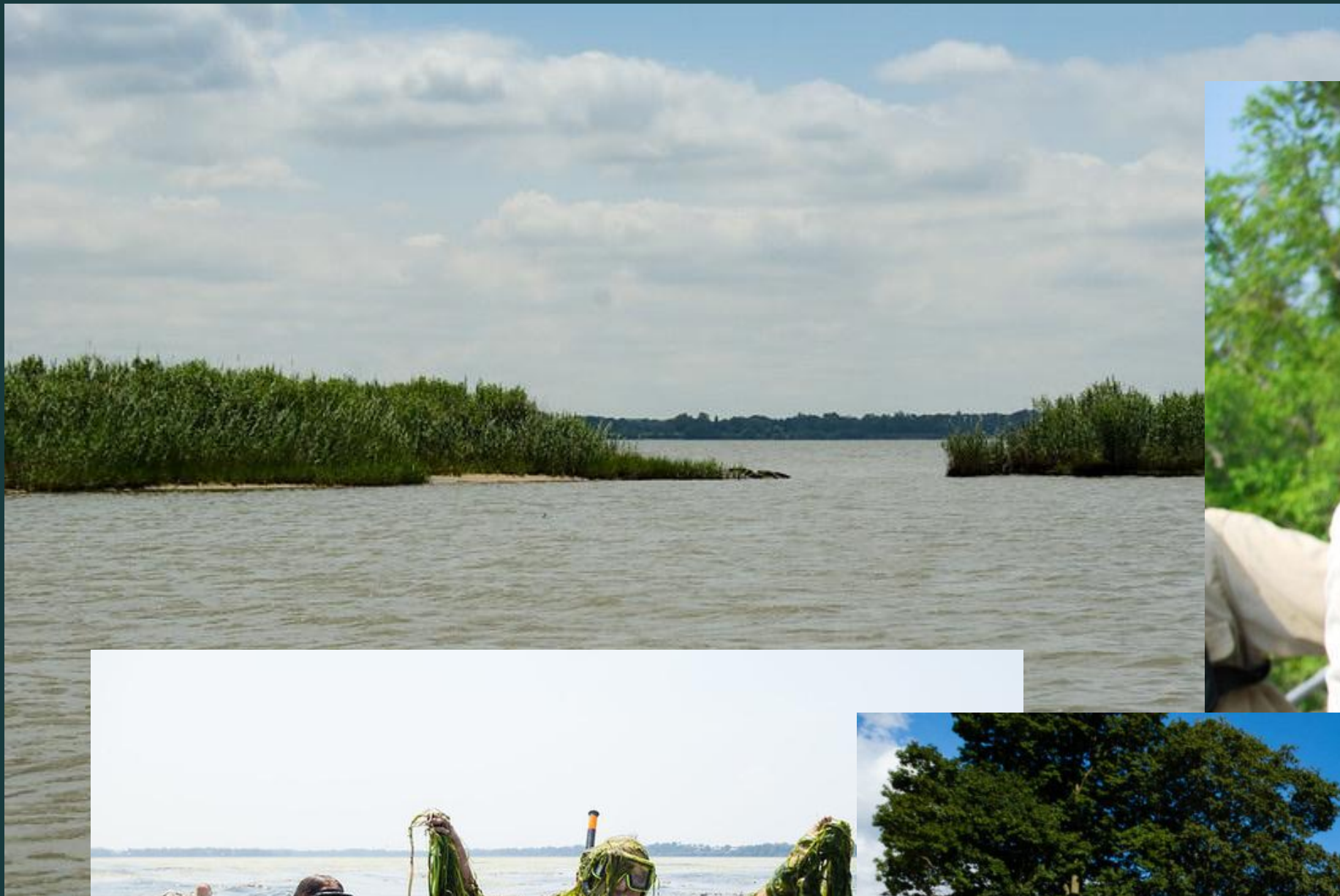
Living Resources and Local Government's Role with Watershed

Improvement

Breck Sullivan, STAR Coordinator

LGAC Meeting 6/1/23

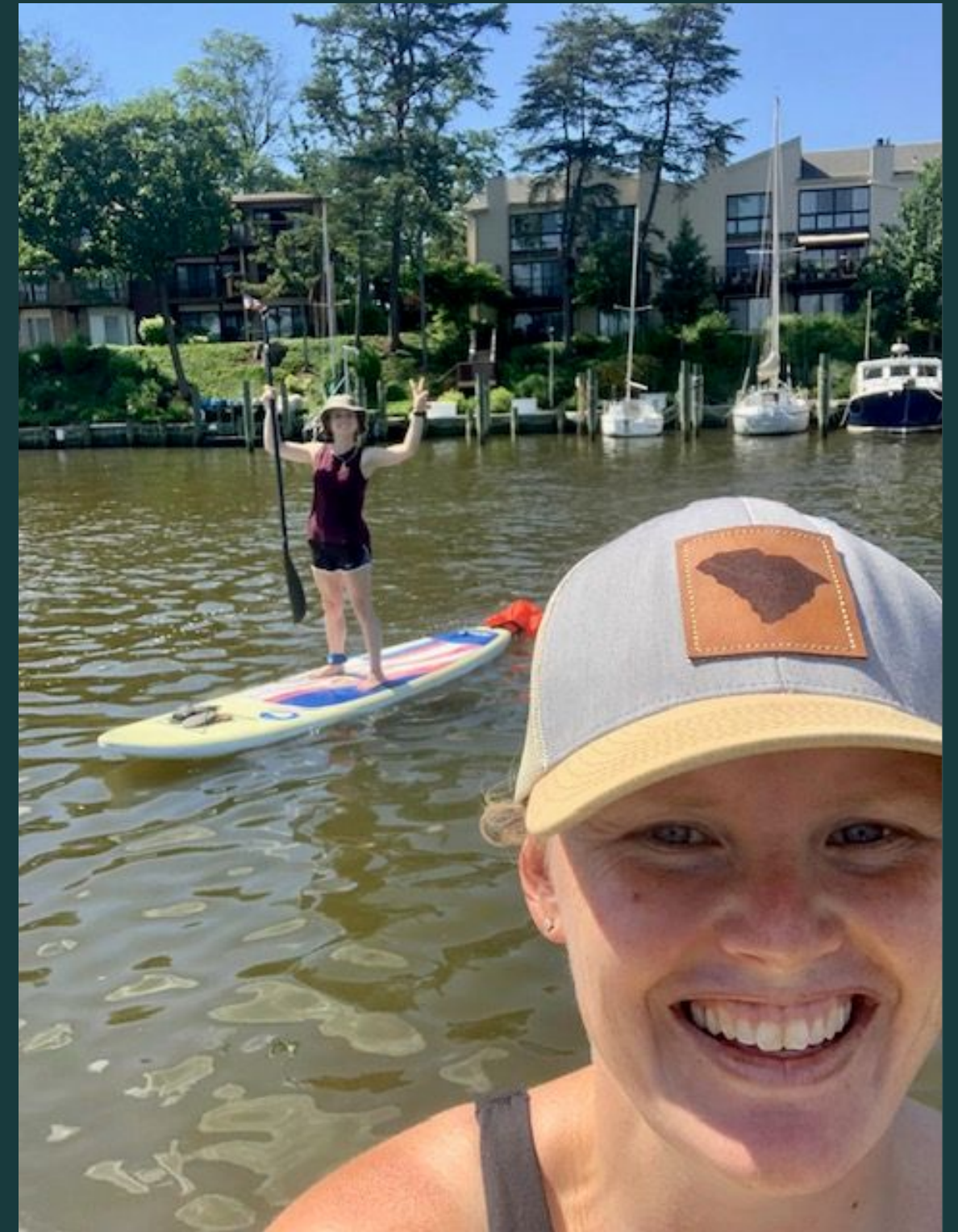




**17 out of the 31 outcomes in the
Watershed Agreement are in shallow
water**



Patuxdent Research Refuge



Back Creek,
Annapolis, MD



**Public
Health**

Education

**Economic
Development
Chesapeake Bay
Program**



**Public
Health**

Education

**Economic
Development**

Public
Health

Education

Economic
Development



**How to maximize local benefits
AND
Chesapeake Bay and watershed benefits
with efforts you are already doing?**

CBP Targeting Portal

High Resolution Land Use/Land Cover Data



Overview Water Quality Improvements Fish, Wildlife and Habitats Land Conservation Increased Benefits to People

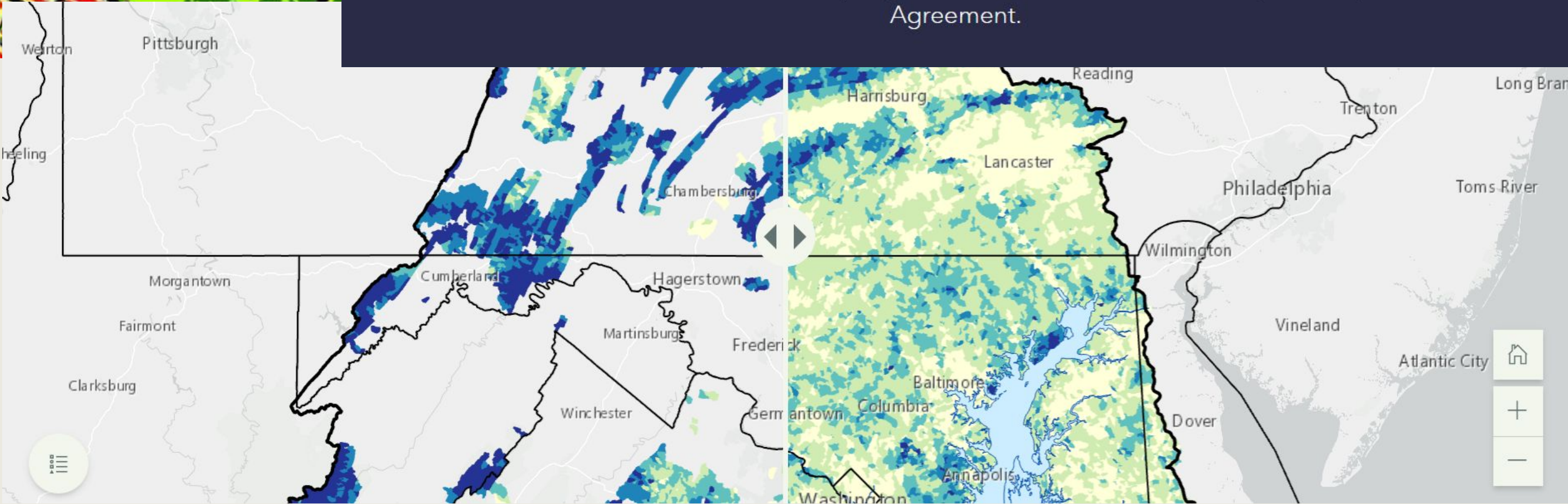
Accelerated Conservation and Restoration

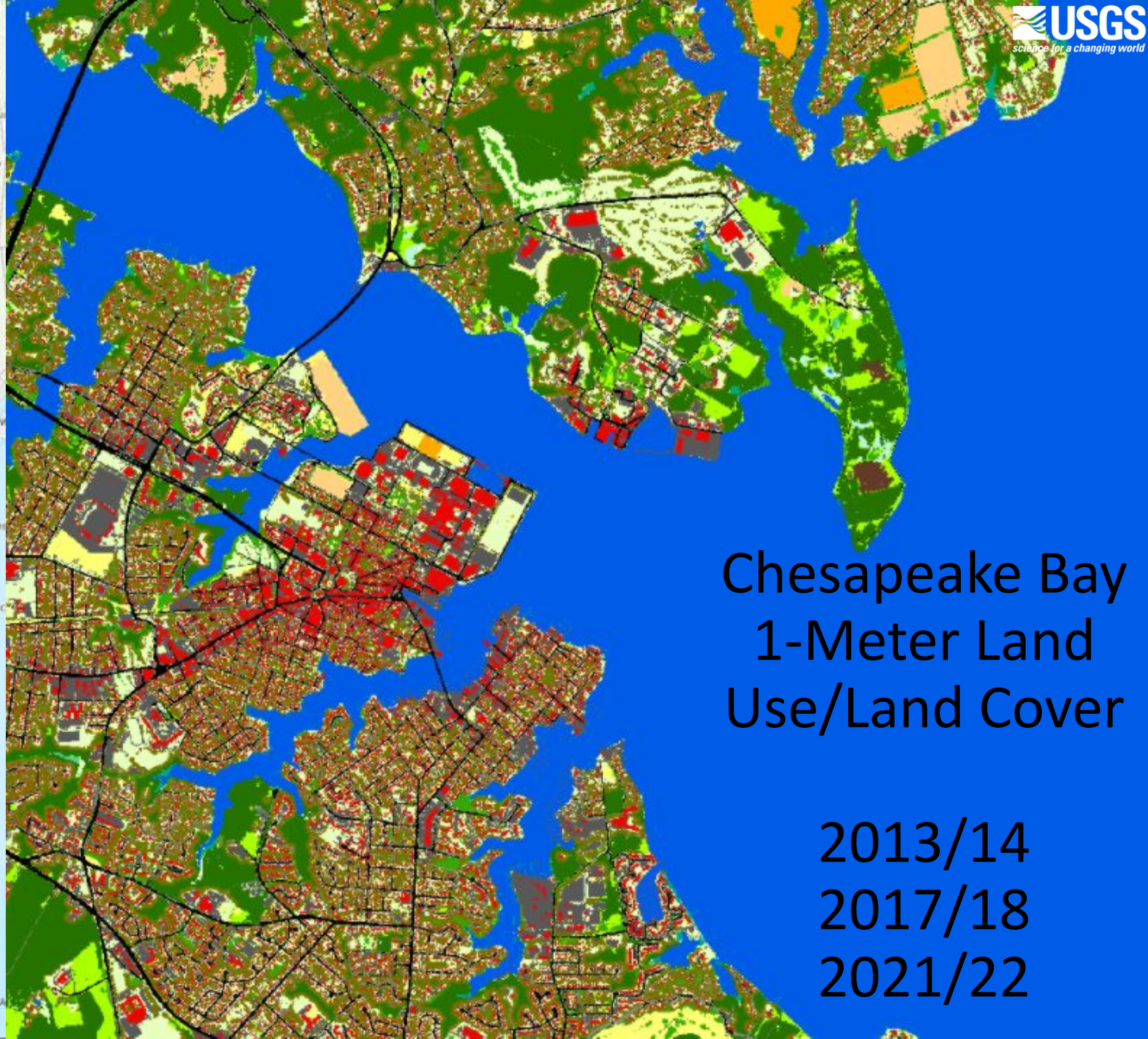
Draft - 051022

Better Targeting CBP Resources to Achieve Multiple Outcomes: Approach and Tools

A collection of maps and applications that can be used to evaluate watershed restoration and landscape conservation initiatives relative to multiple goals and outcomes of the Chesapeake Bay Watershed Agreement.

Chesapeake Healthy Watershed Assessment

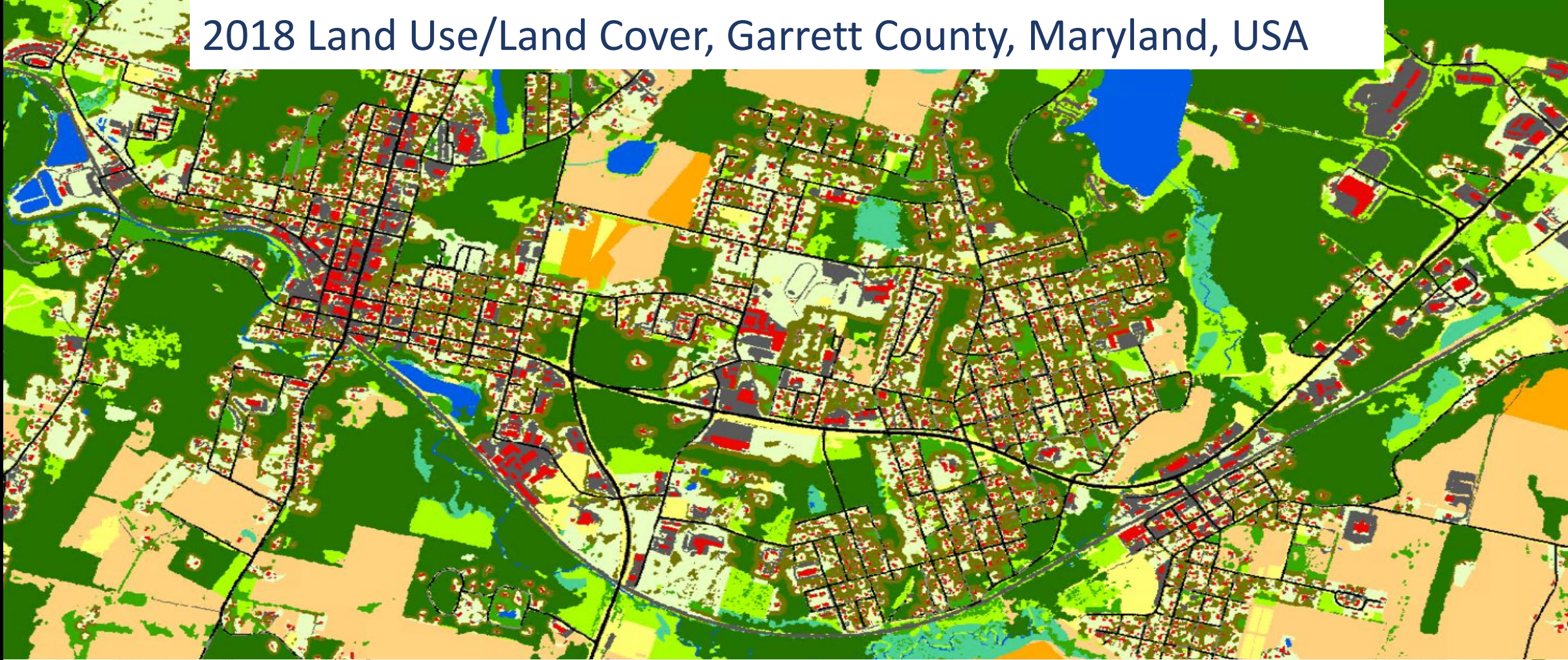




Chesapeake Bay 1-Meter Land Use/Land Cover

2013/14
2017/18
2021/22

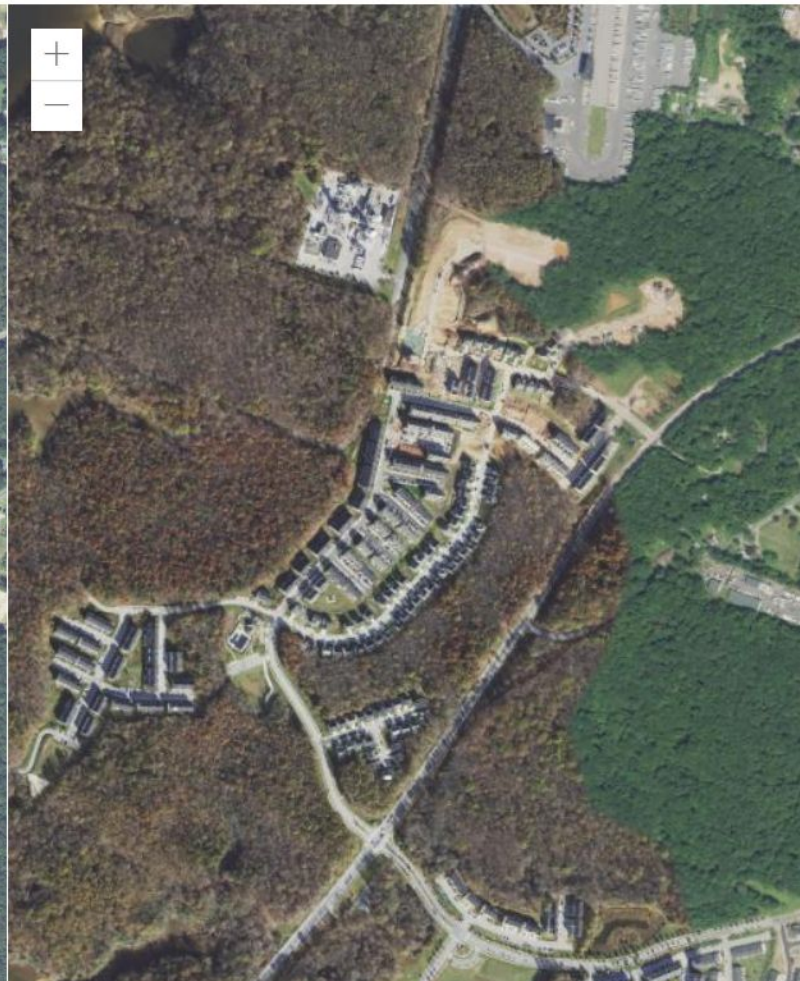
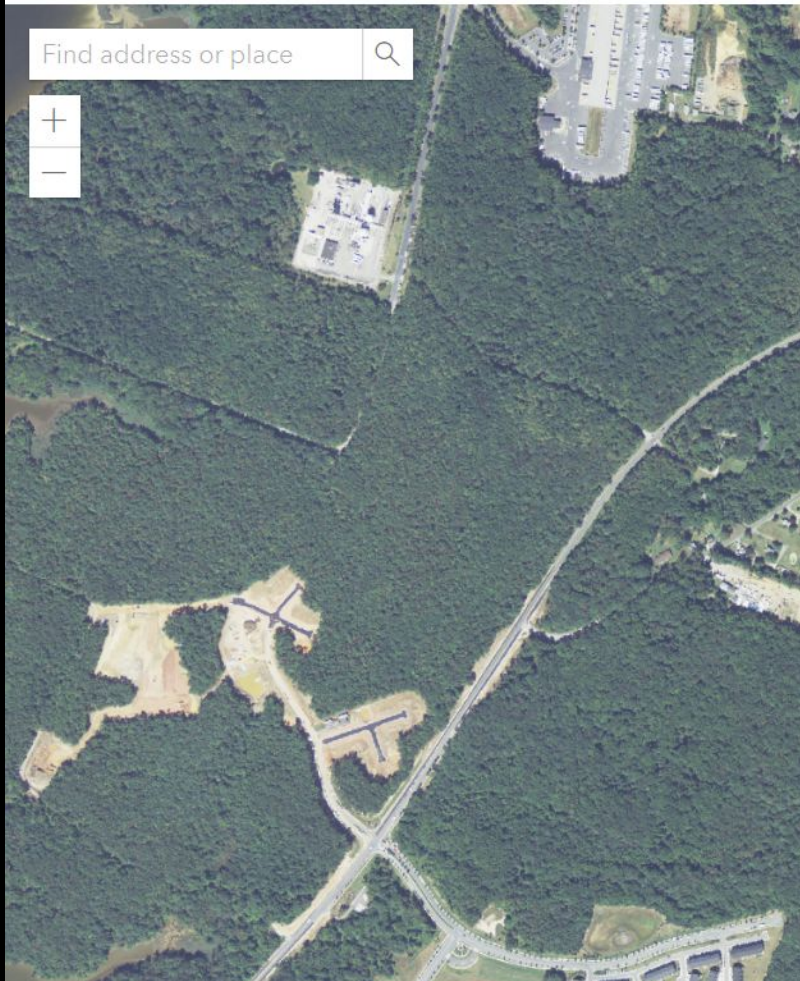
1- meter resolution, 54-class Land Use/Land Cover and Change for all counties within and adjacent to the Chesapeake Bay Watershed
2013/14 – 2017/18



2013/2014 NAIP

2017/2018 NAIP

Land Use / Land Cover
Change, 2013-2018

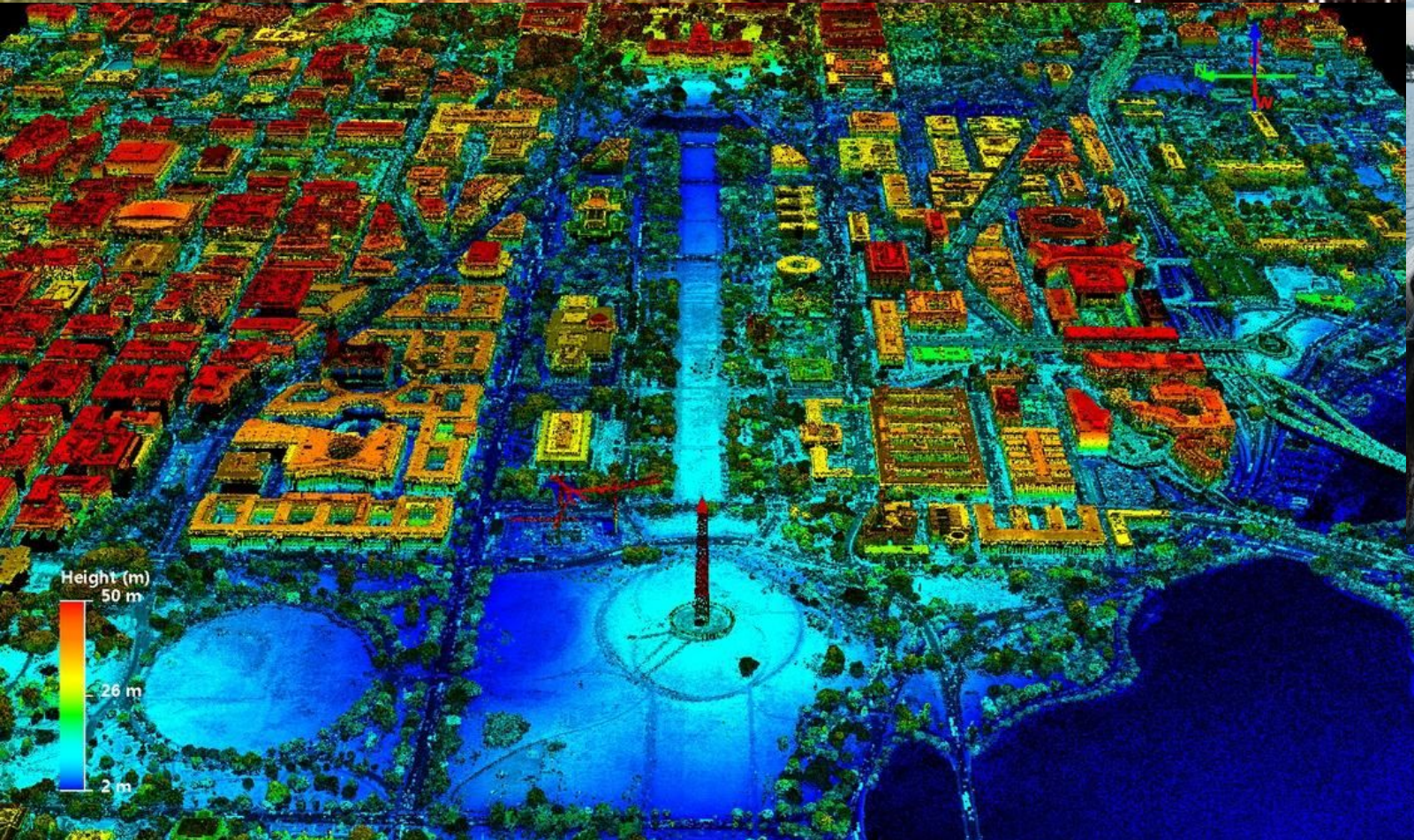
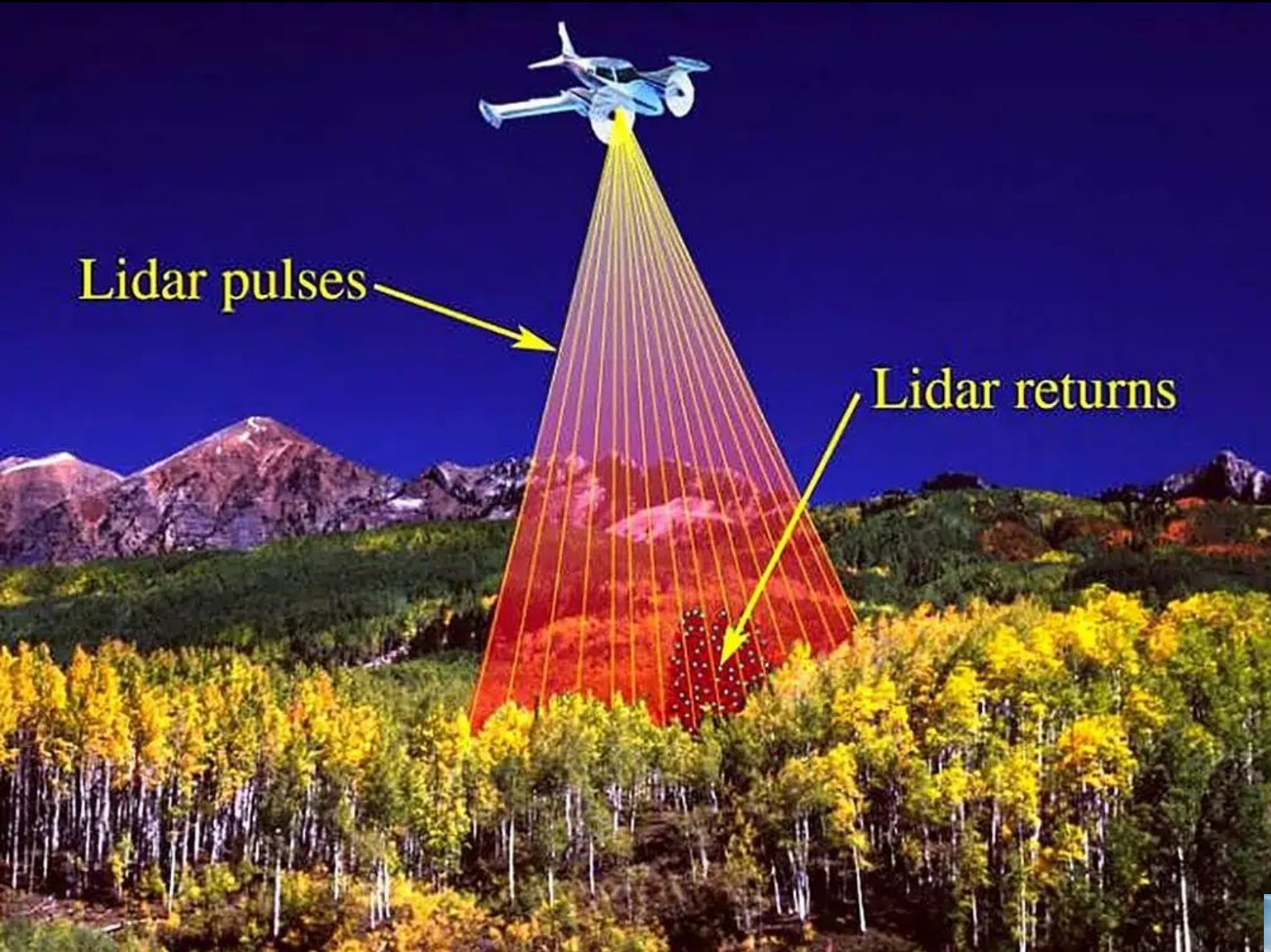


30-meter Resolution



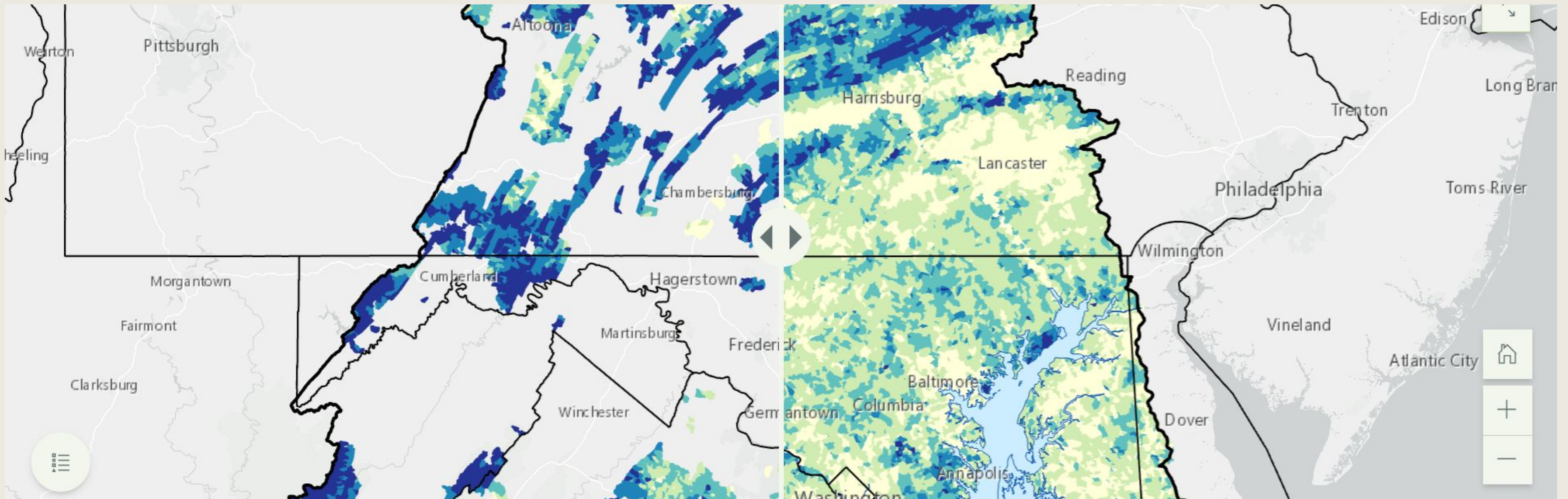
1-meter Resolution





Chesapeake Healthy Watershed Assessment

Providing information useful to support strategies protecting and maintaining watershed health



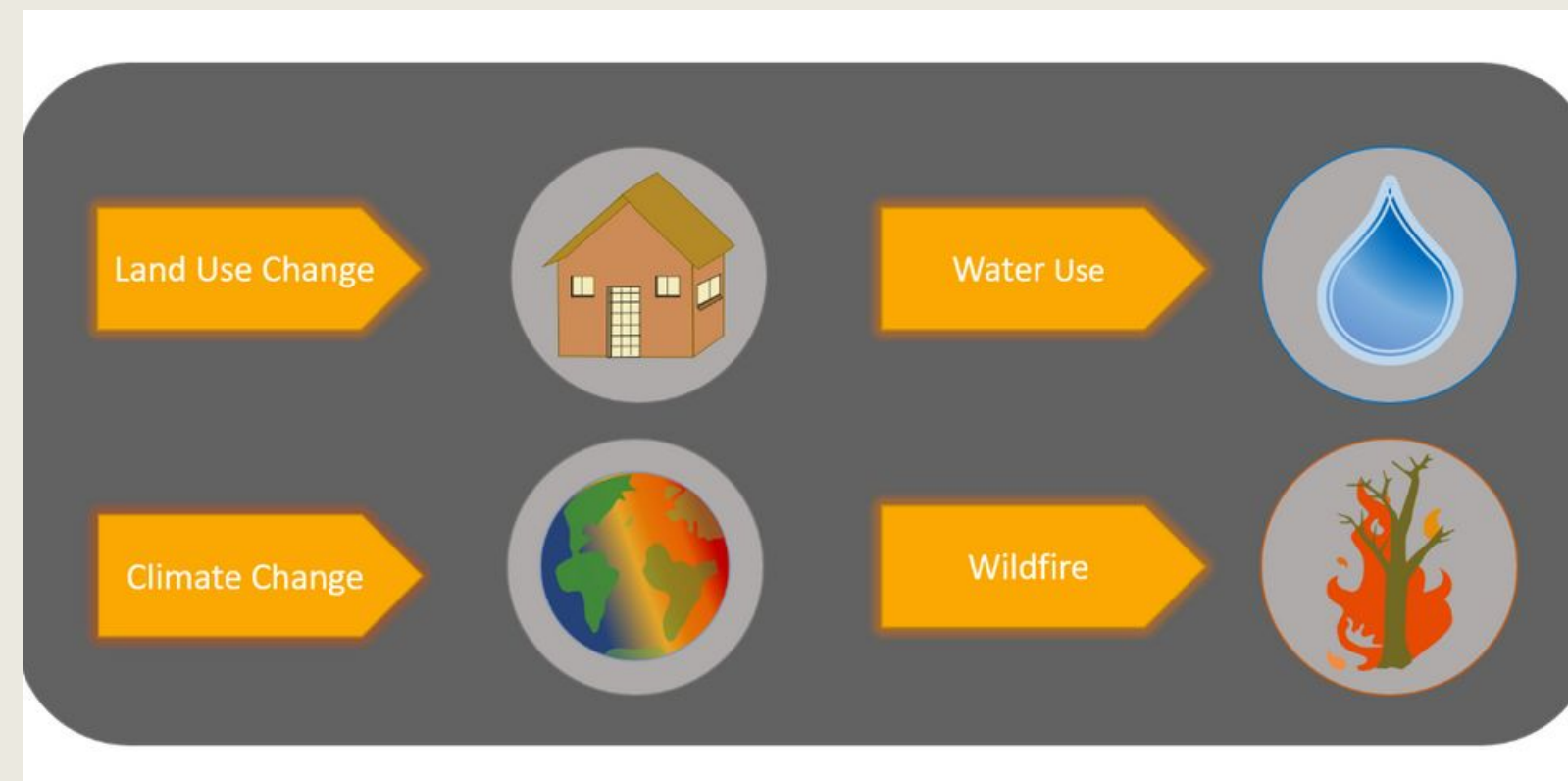
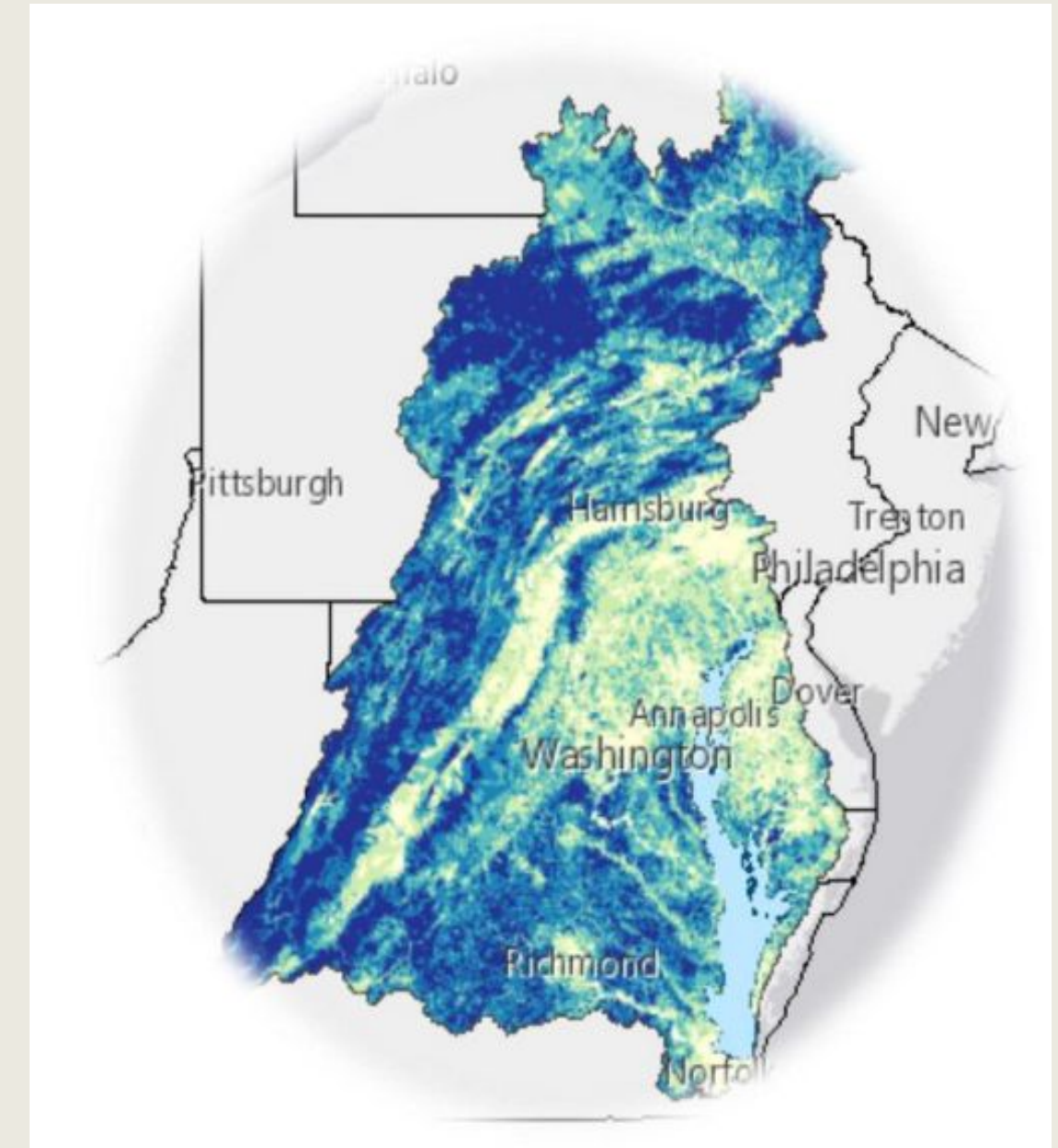
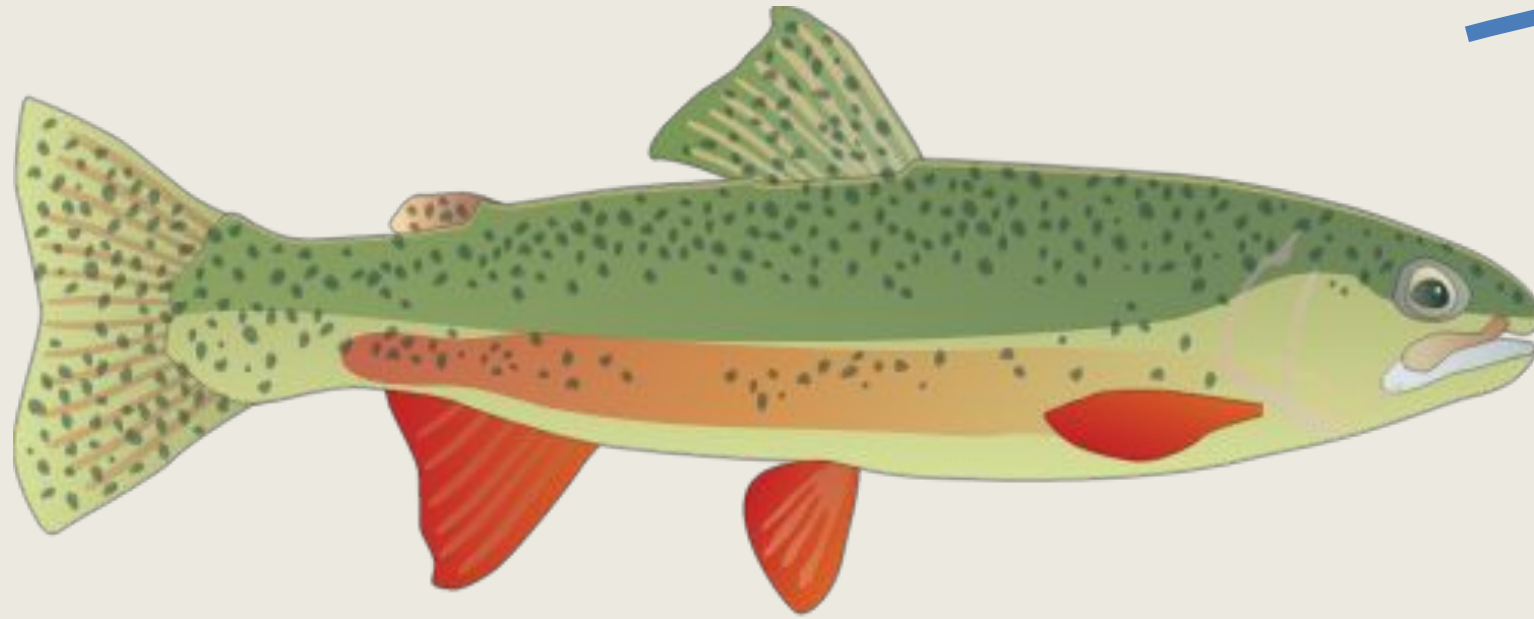
Watershed Health Index and Metrics:

Habitat Sub-Index

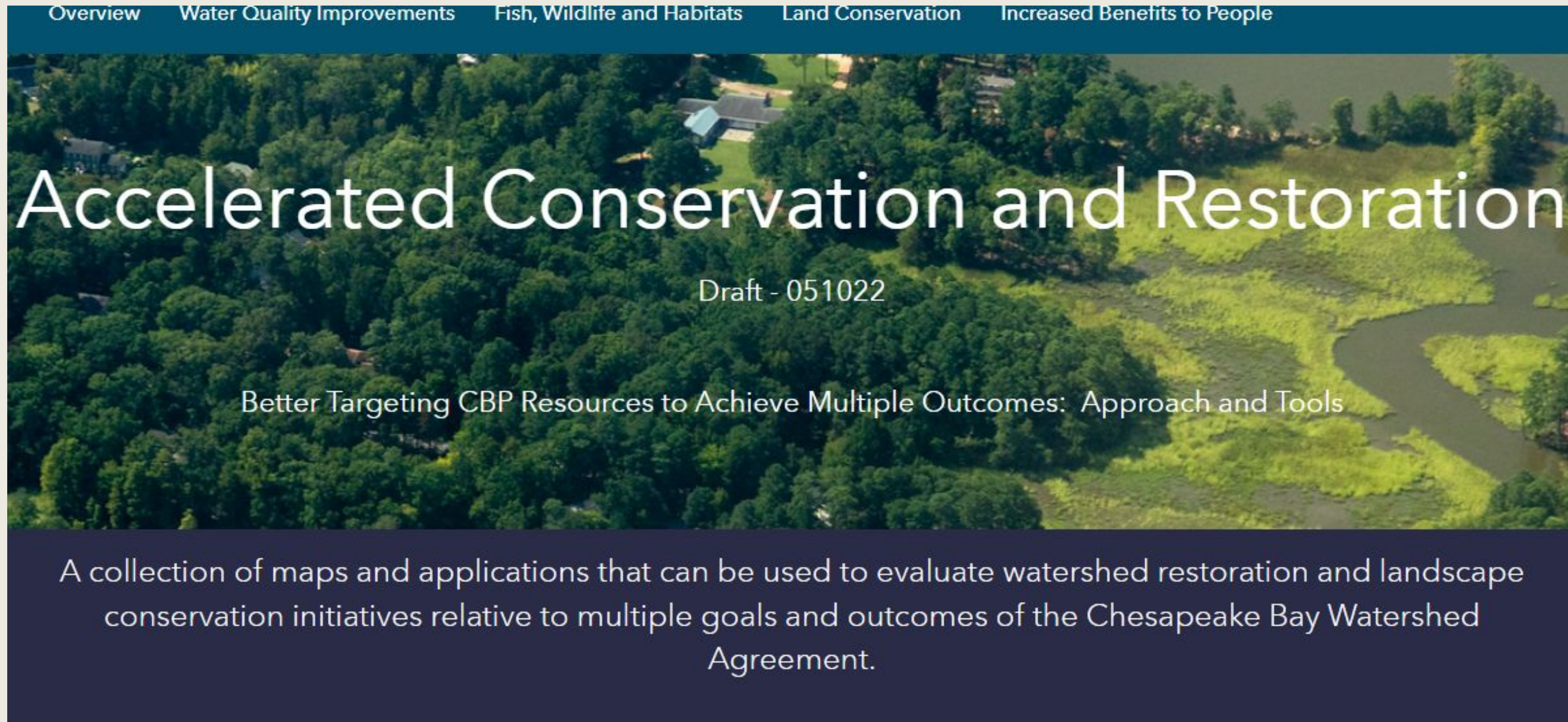


Attributes include:
aquatic, wetland,
riparian, floodplain,
lake, and shoreline
habitat, Hydrologic
connectivity.

Watershed Vulnerability Metrics

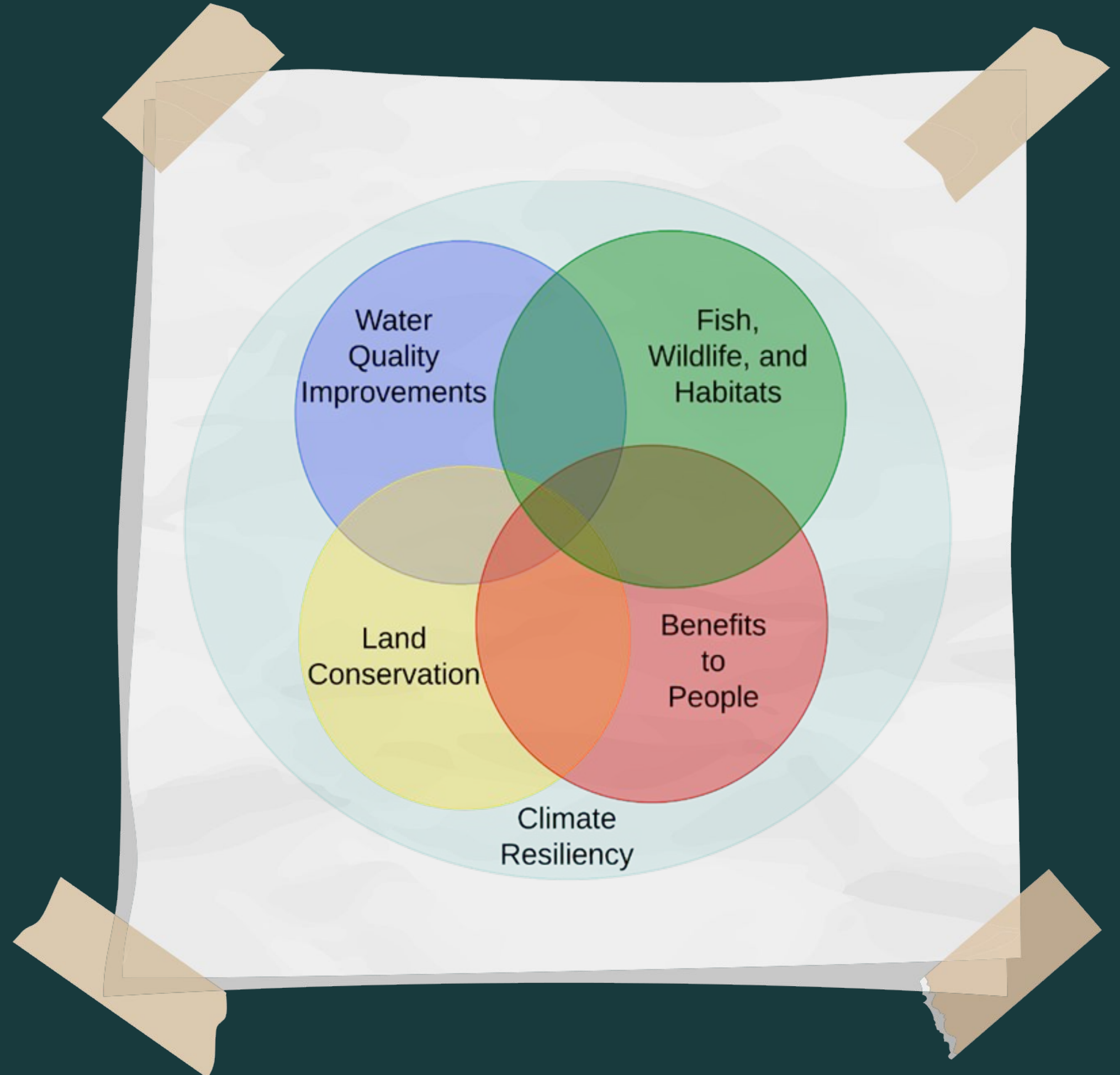


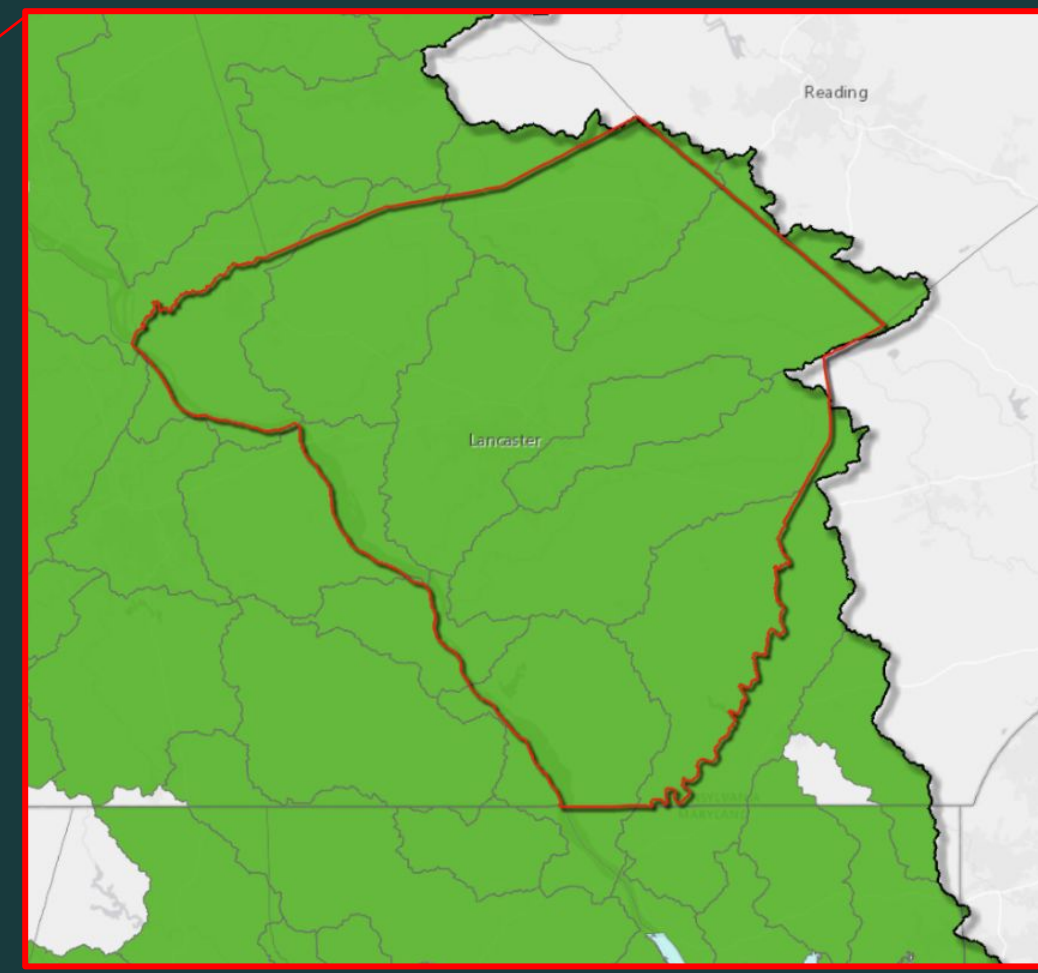
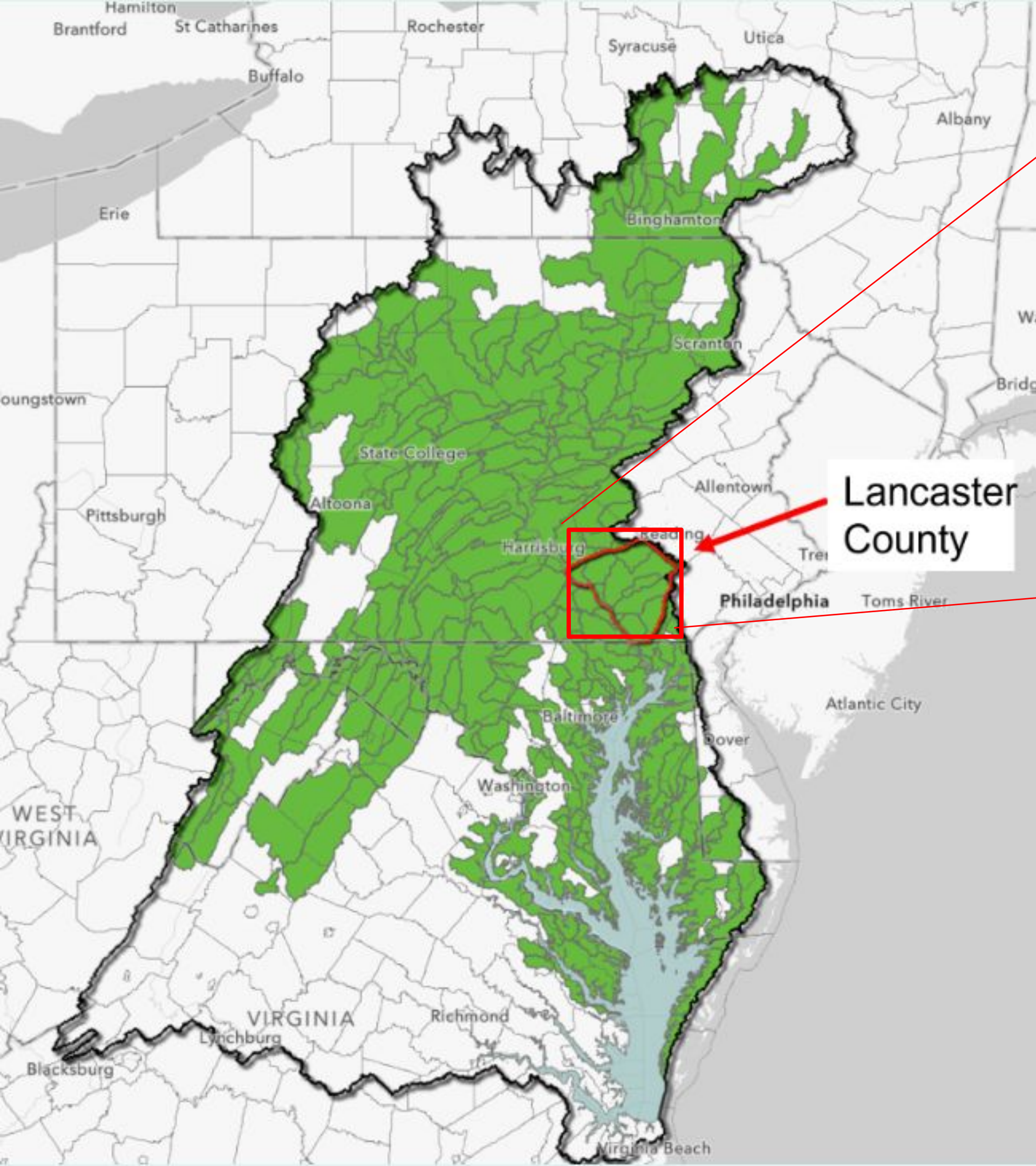
CBP Targeting Portal



Management Question:

How can
additional CBP
outcomes for
habitats and
people be
achieved in the
Most Effective



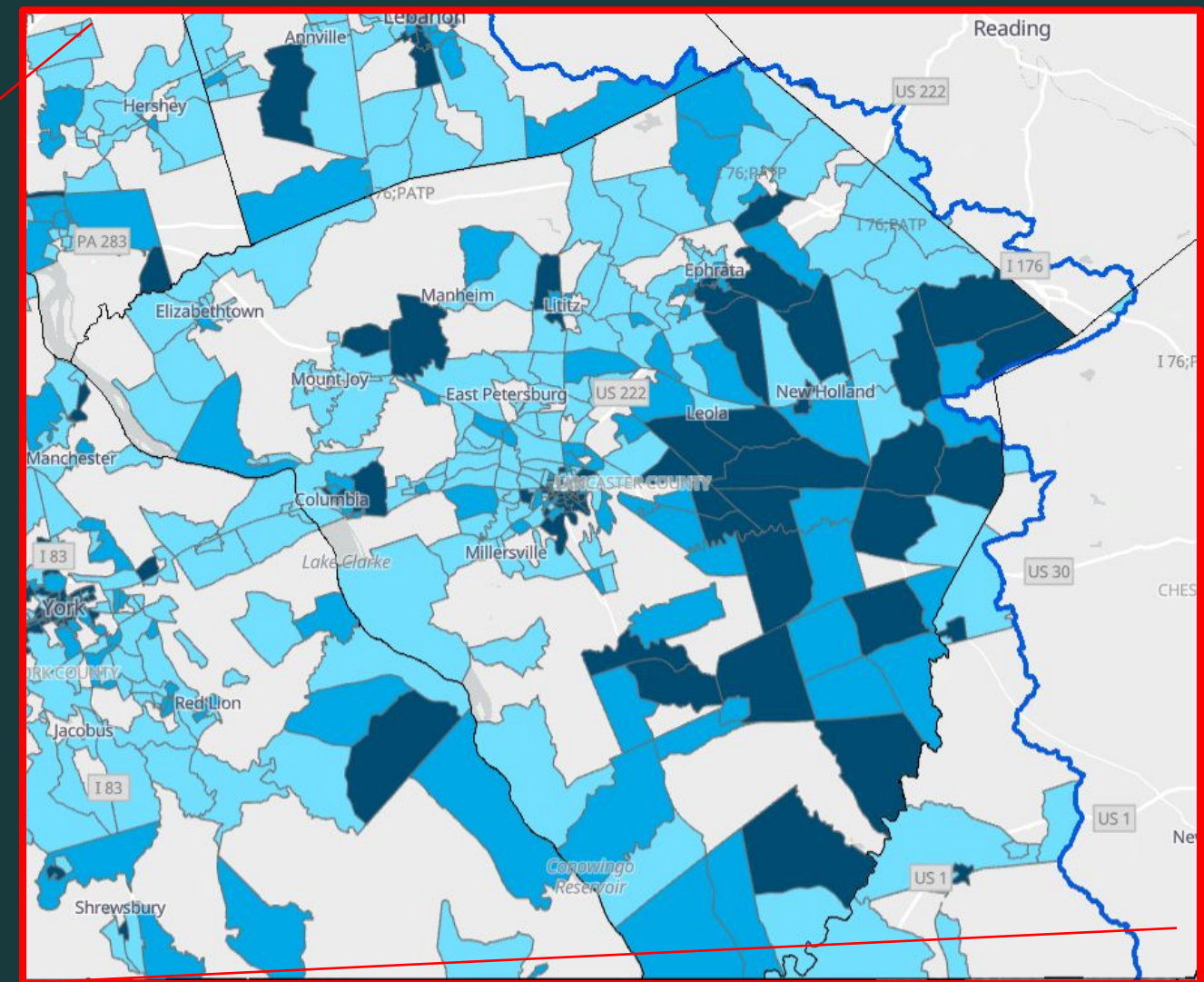
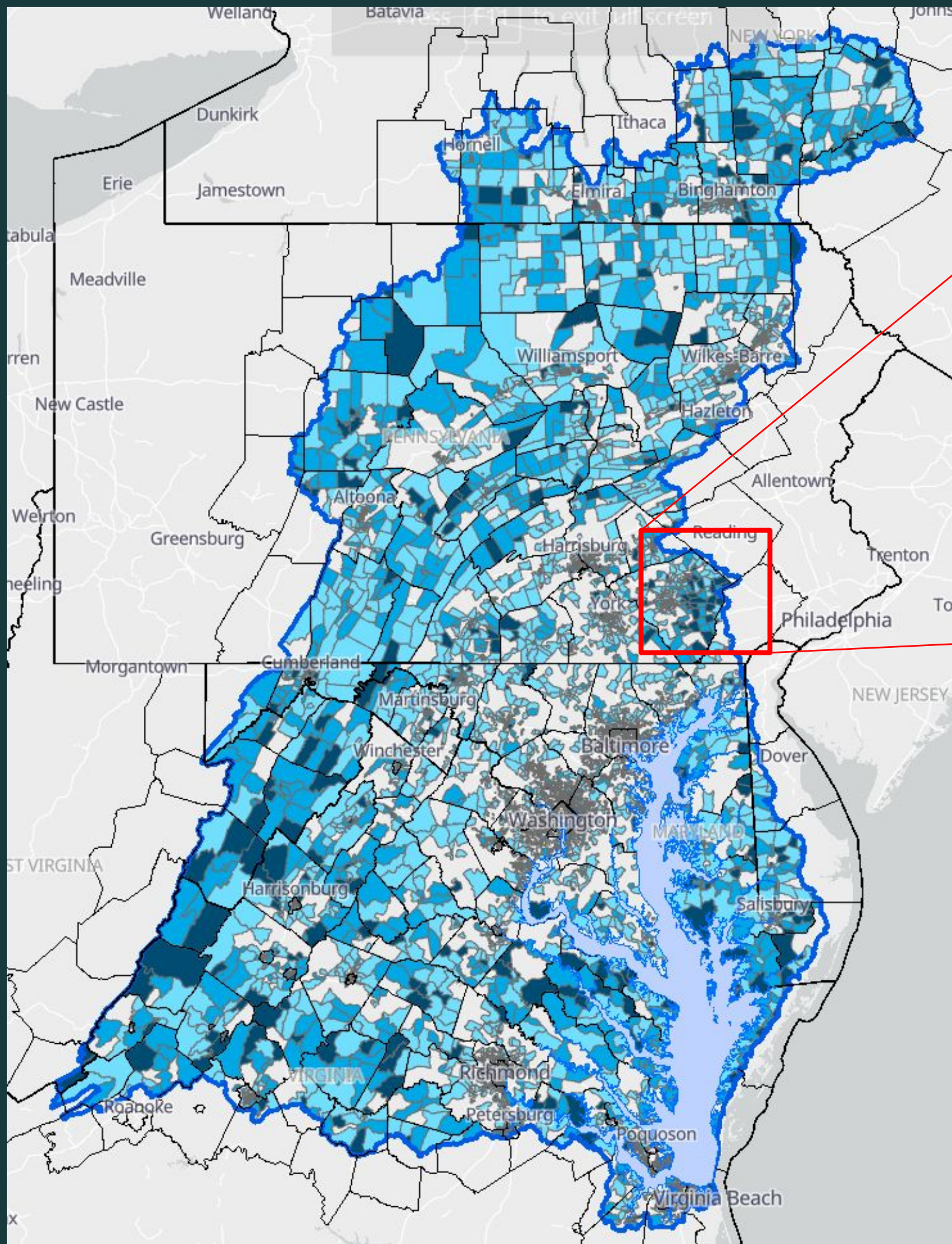


2 CBP Outcomes

- Bay TMDL & Standards Attainment

Tool: Most Effective Basin Map

Programs: EPA CBP Grants & State Programs

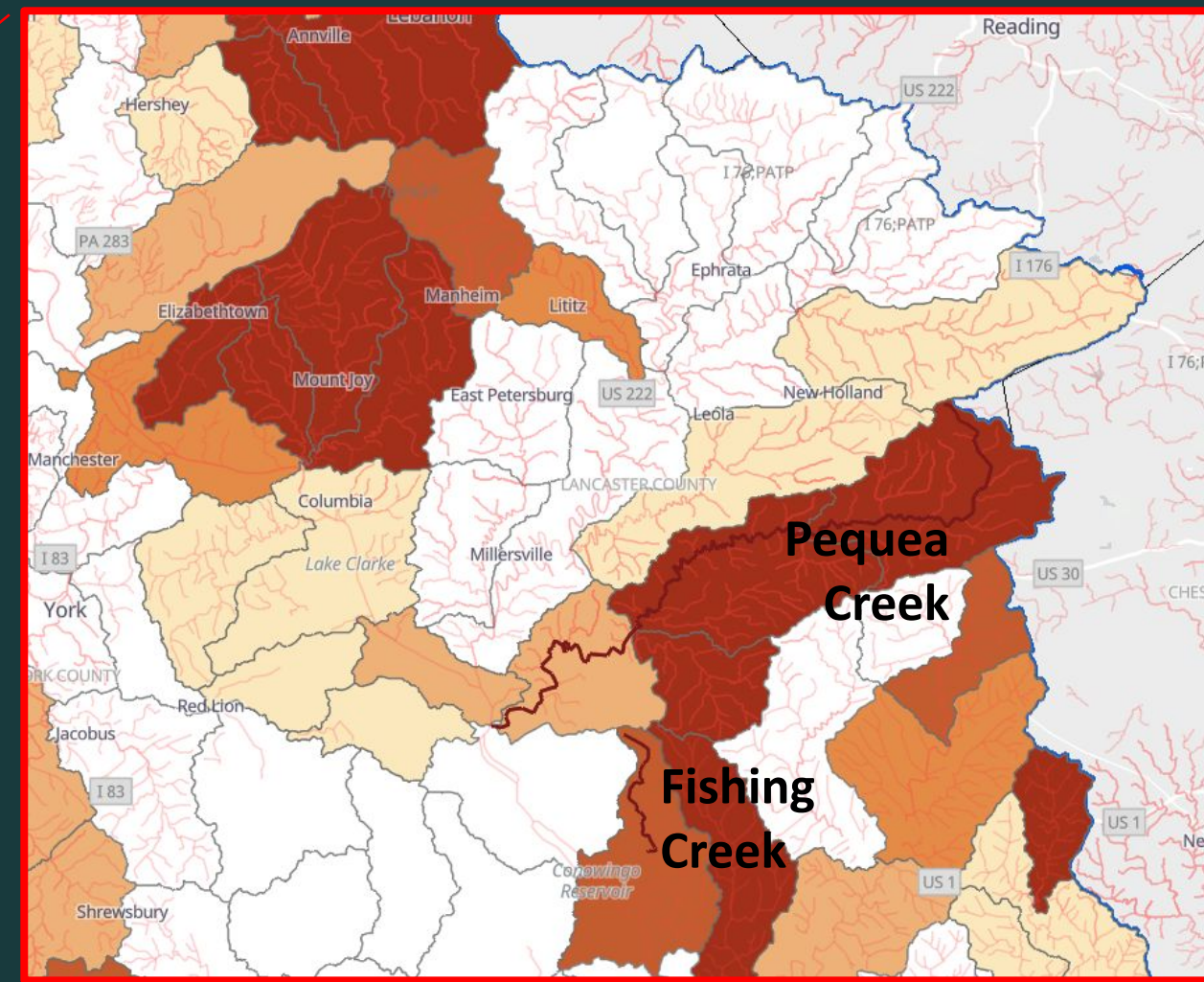
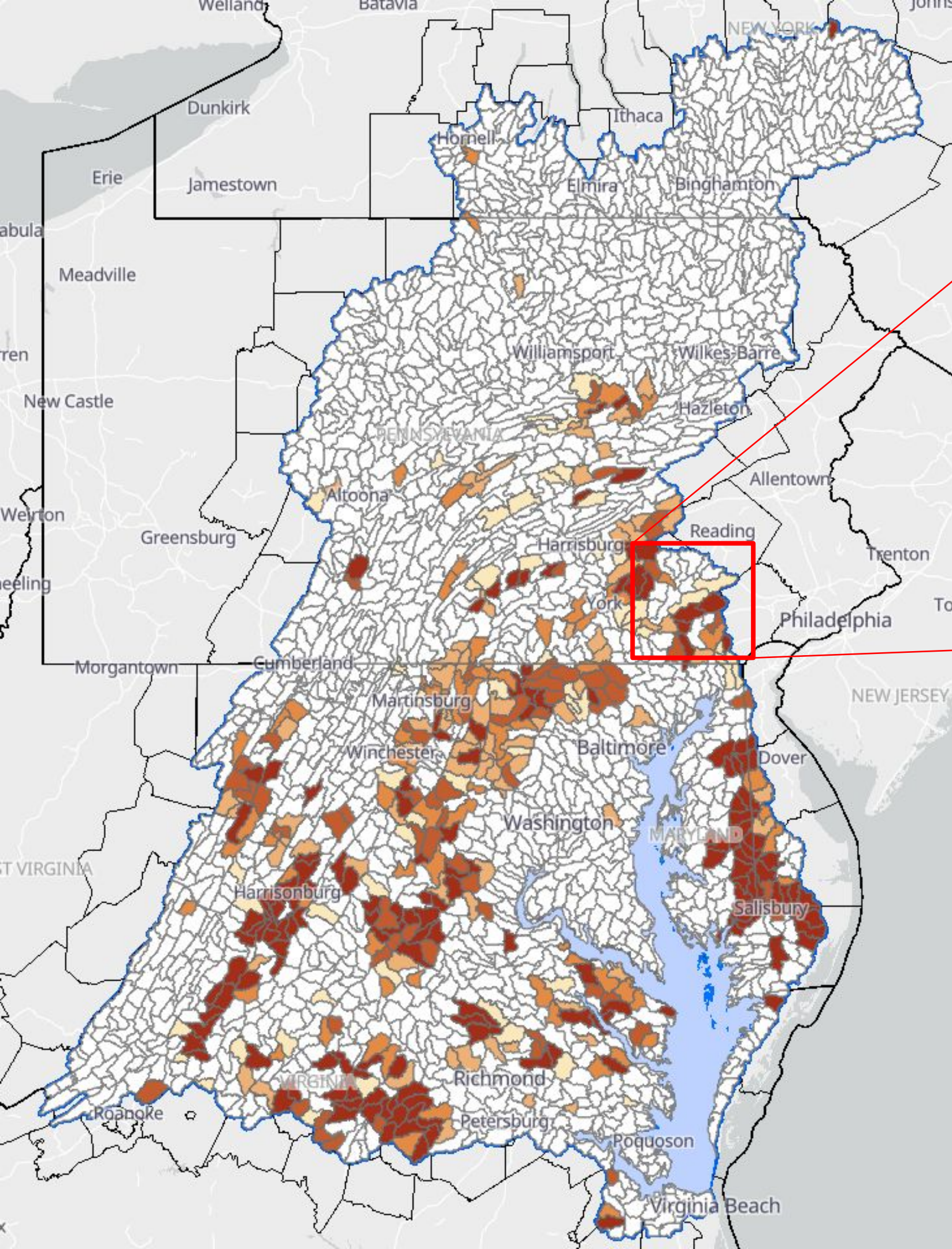


3 CBP Outcomes

- Bay TMDL & Standards Attainment
- *Diversity*

Tools: MEB + *Disadvantaged communities*

Programs: EPA, States, +EPA *Grant for Disadvantaged Communities*

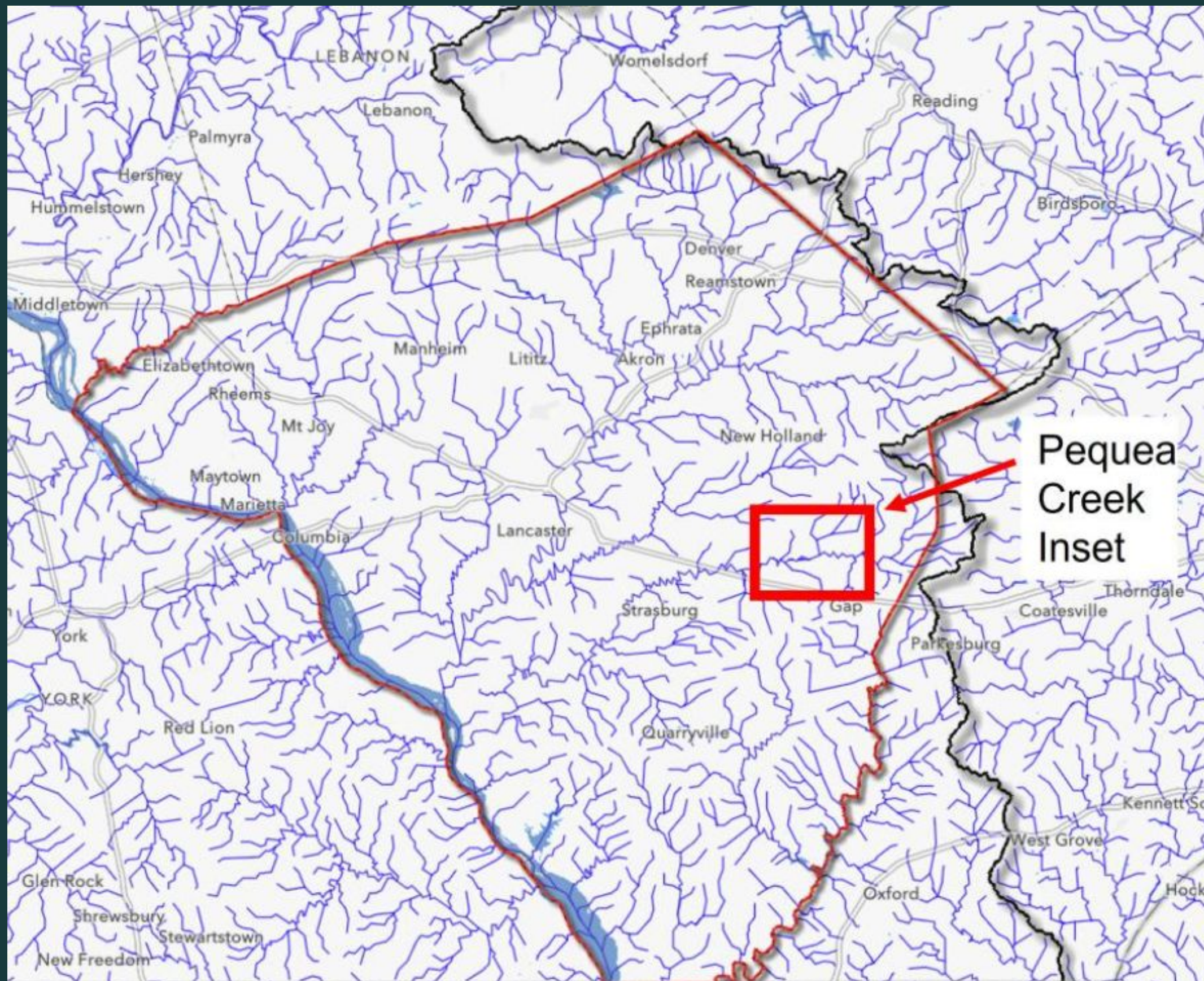


4 CBP Outcomes

- Bay TMDL & Standards Attainment
- Diversity
- *Stream condition/local waters*

Tools: + *Ag Priority Watersheds*

Programs: – EPA, States + *NRCS Programs*



Local Targeting Tools

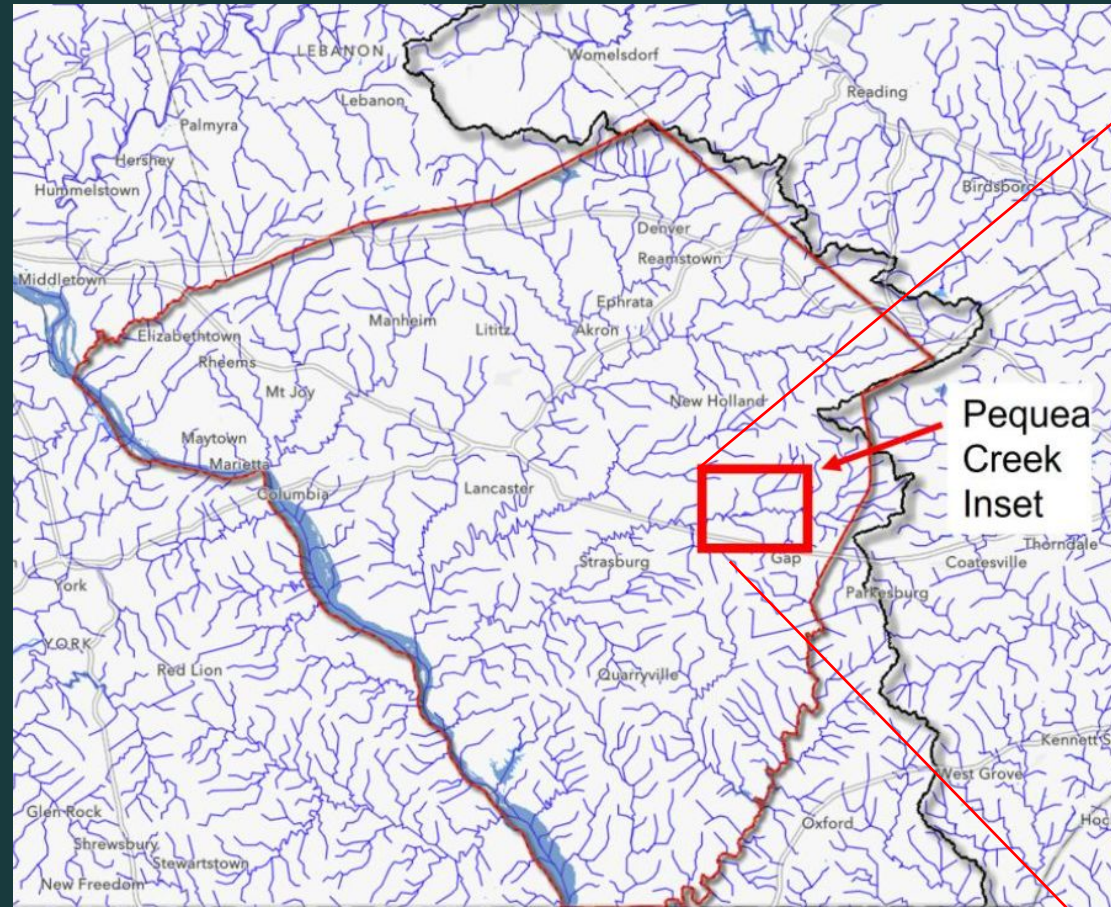
- Streams within Lancaster County

Hierarchical Targeting

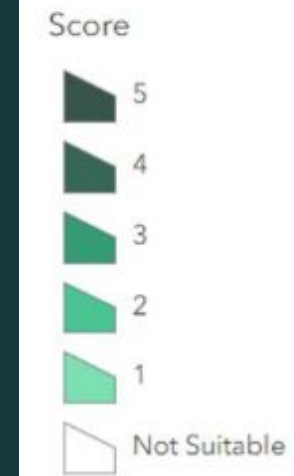
Regional Screening Tools

Local Targeting Tools

High-Resolution Data



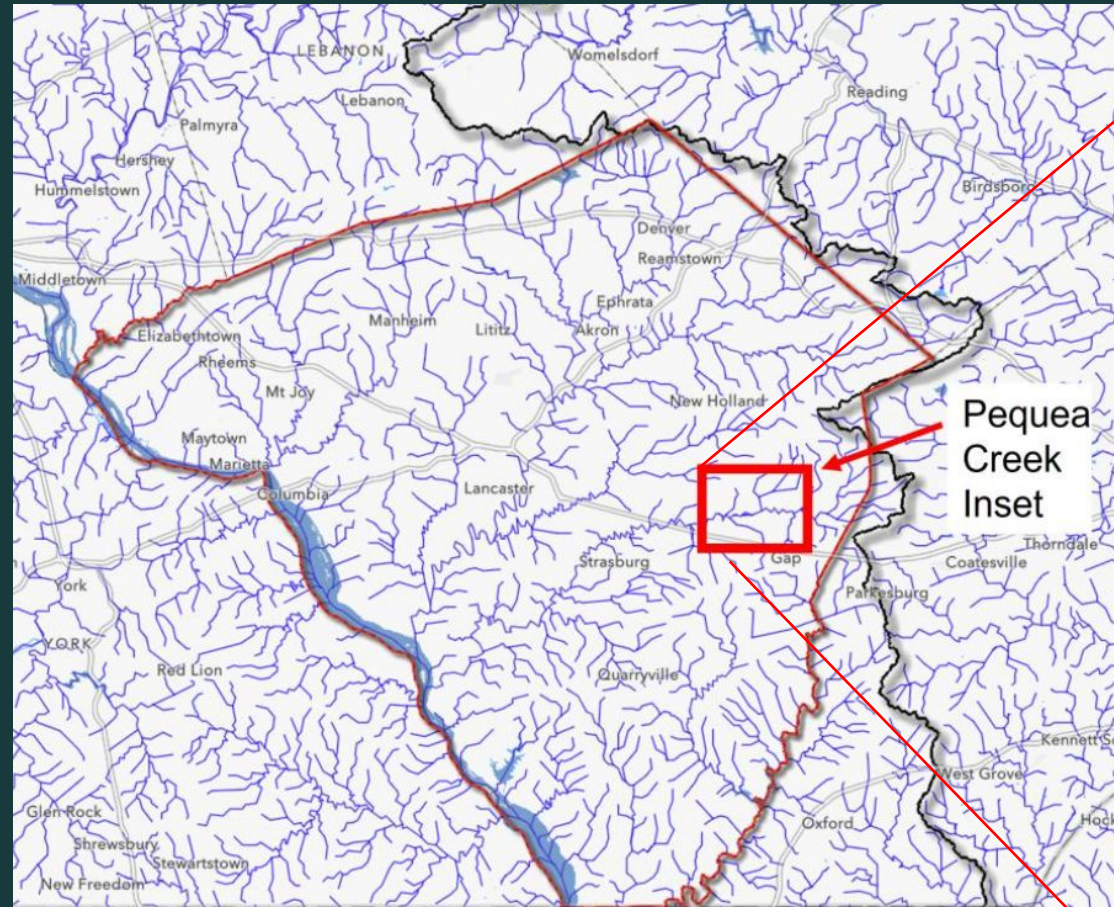
Riparian Restoration Potential - Watershed Resources Registry



5 CBP Outcomes

- Bay TMDL & Standards Attainment
- Diversity
- Stream Health
- *Forest Buffers*

Tools: + *Watershed Resources Registry*
Programs: – EPA, States, NRCS, +*local programs*



6 CBP Outcomes

- Bay TMDL & Standards Attainment
- Diversity
- Stream Health
- Forest Buffers
- *Wetlands*

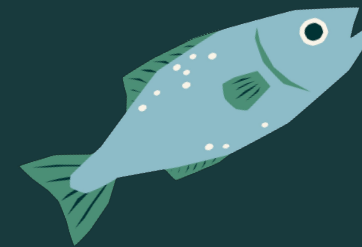
Tools: + *Watershed Resources Registry*
Programs: – EPA, States, NRCS, +*local programs*


We Need Your Feedback

Support local decisions on
flood hazard mitigation, land
use and climate resiliency
planning

Translate, format, package and flow
information through to trusted sources
to better effectively engage locals
directly.

Strategy on how to involve locals, using the existing
Local Engagement Strategy for guidance, so they may
be provided data, resources and information related to
land use change in a more efficient and effective
manner.



An illustration of a person wearing a green jacket, pink pants, and a green beanie, standing next to a brown and white dog. They are in a forest setting with two green trees and a grey rock. A large yellow speech bubble is positioned above the person.

*How can the CBP be
part of the solution?*

Questions?

Breck Sullivan, USGS@CBPO
bsullivan@chesapeakebay.net

References

- Chesapeake Healthy Watershed Assessment Method Overview and Sample Results.
<https://storymaps.arcgis.com/stories/6c45b975e27d413bad23988dc2dde5ef>
- Accelerated Conservation and Restoration Version 1.
<https://gis.chesapeakebay.net/targeting/>
- CBP Science Needs Database. <https://star.chesapeakebay.net/>
- Retrospective on Lessons Learned from the CBP SRSs 3rd Cycle.
https://d18lev1ok5leia.cloudfront.net/chesapeakebay/documents/2.-Read-Ahead-Retrospective-on-Lessons-Learned-from-the-CBP-SRS%E2%80%99s-3rd-Cycle_5.5.23_2023-05-09-175030_ddta.pdf
- High Resolution Data.
https://www.chesapeakeconservancy.org/conservation_innovation