



GREATER GRACE WORLD OUTREACH

A congregation unites its community
to improve stormwater runoff

PROJECT GOALS

Reduce the negative environmental impacts of the church to its local waterway.

COMMUNITY AND ECONOMIC BENEFITS

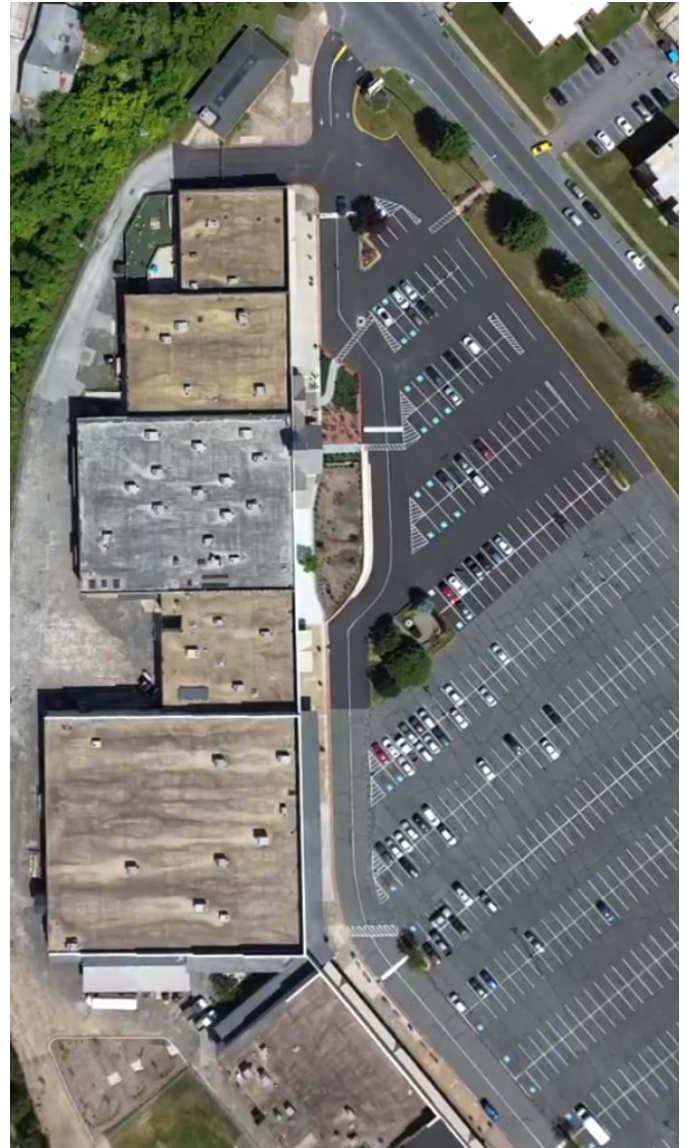
- Surrounding communities are given the opportunity to learn about the importance of green infrastructure and how it can positively impact their lives and city.
- Builds community cohesion.
- Less flooding reduces damage-related costs.
- Planting vegetation beautifies the area, increasing visitors and raising property values.

ENVIRONMENTAL BENEFITS

- Reduced stormwater runoff led to improvements in water quality.
- Decrease in sediment pollution and nutrient contamination.
- Permeable surfaces absorb and filter stormwater, reducing flooding and contaminants entering local streams.
- Wildlife habitat created by adding new vegetation.

CONSERVATION PROJECTS INSTALLED

- Bioretention areas.
- De-paving.



Bioretention areas, center, reduce the amount of impervious surface and help manage stormwater runoff. (Photo: Greater Grace World Outreach)



PROJECT SUMMARY

Greater Grace World Outreach campus is a 13.6-acre property that dumps approximately 13 million gallons of stormwater runoff annually into Biddison Run, the stream directly behind their property (Biddison Run is a tributary of the Back River, which flows into the Chesapeake Bay). The project involved installing two bioretention areas along with a large pavement removal project. These improvements treated 1.66 acres of impervious surface and educated over 1,500 parishioners and students about the importance of restoring and protecting our waterways.

THINGS TO CONSIDER

- Regular, open communication between partners is critical to ensuring everyone is held accountable.
- Make certain your team has a strong foundation of honesty and trust, which is crucial in helping to navigate any challenges that arise.
- Being respectful and flexible is necessary for any large-scale project.

THE PARTNERS AND FUNDING SOURCES

- Greater Grace World Outreach
- CityScape Engineering

CONTACTS

👤 Emma Grace Iyer
Greater Grace World Outreach

✉️ eiyer@ggwo.org