

Invasive Species Management A Lower Shore Approach

LGAC Quarterly Meeting 6/1/2023

Victoria Spice, Agricultural Inspector

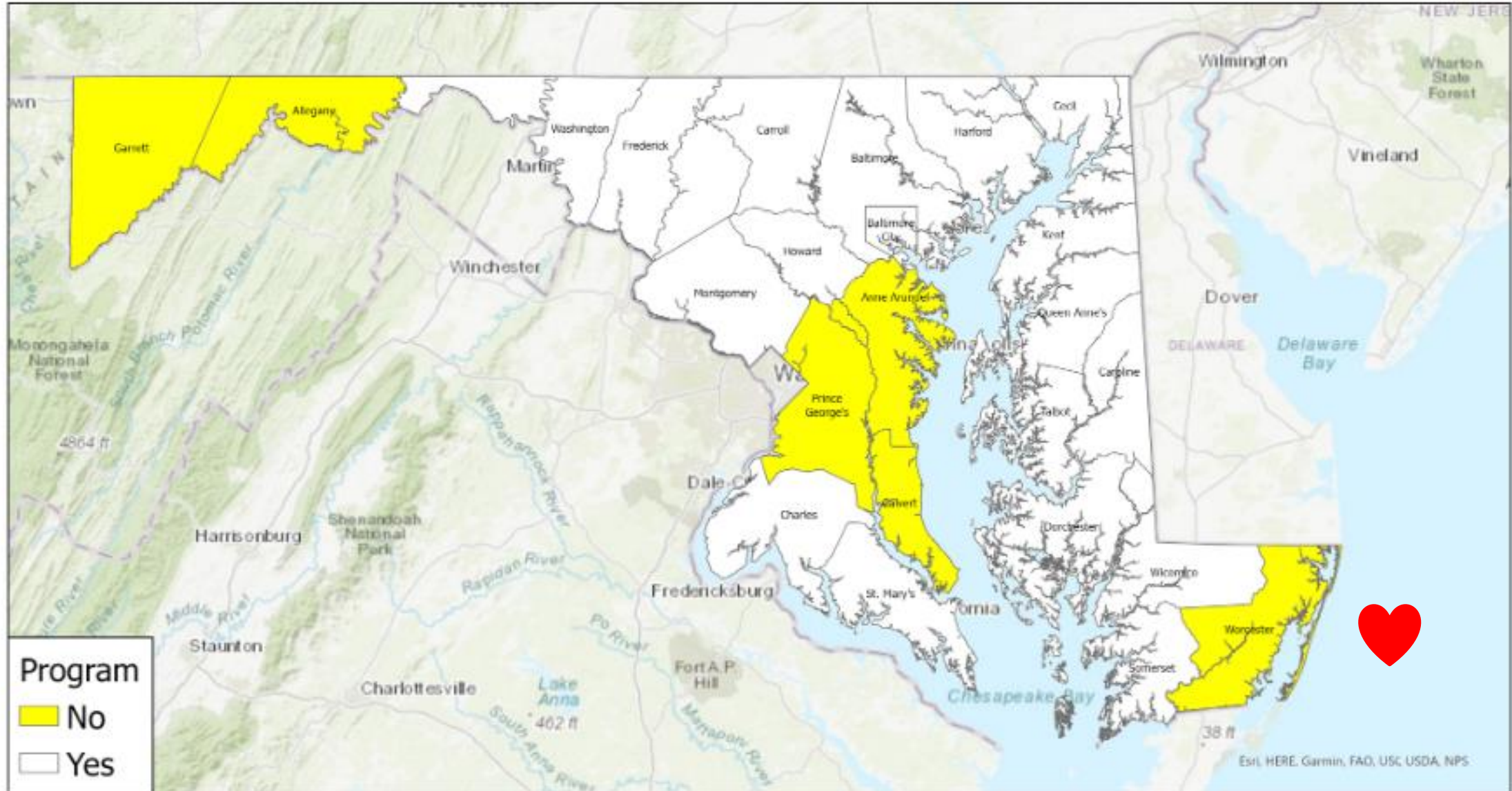
MD Dept of Agriculture Plant Protection Weed Management

Victoria.spice@maryland.gov



Noxious Weed Control Program Counties

MD Dept. of Agriculture, Plant Protection and Weed Management



Project Background

2016

Idea born @ Wicomico
County's Natural
Resource Conservation
Advisory Committee

Spring 2019

Interest meeting held

Fall 2019

Interim Coordinator
hired, restoration
begins

Winter 2019

Grant opportunity
identified

Spring 2020

Funding granted!
Coordinator Hired

What is the problem & why do we care?

- Most people have no idea what is happening - silent tsunami!!!!!!!!!!!!!!
- Native plants replaced by non-native invaders
- Most were brought here on purpose with good intent
- Here (in their nonnative habitat) the invasive species have no natural “predators” to keep them in check





Public Safety





Asset Liability





Bank Stabilization





Agriculture & Forestry

Lower Eastern Shore – Partnership for Regional Invasive Species Management

1. What is it?

2. Why is it necessary?

3. What do we do?

1. What is LES-PRISM?



- Cooperative of State, County, Federal and NGO partners and stakeholders dedicated to reducing the negative impact of nonnative invasive species on the natural and agricultural environment in the lower three counties of Maryland's Eastern Shore.



2. Why LES-PRISM?

No current regional management program

- Historically there were Weed Control Programs in each County throughout the State

Shared outreach

- Trainings, brochures, fact sheets

Shared implementation

- Share successes, failures, standards, resources

Leverage funding

- Use network to identify, and prioritize restoration activities



Invasive Species Management in Maryland

- Prior to 2008, 20/23 Counties had cost share Weed Management Programs funded through MDA and Weed Control Programs
- MD DNR has their own invasives program for their parks and lands
- MDA has regulated Noxious Weeds (8 species), Tier I (6 species) & Tier II (13 species) invasive plants, enforcement an issue
- There ARE cost share programs for landowners through State/Fed level (NRCS), but reach a very small percentage of landowners
- New MD HB 90- Counties & Municipalities to adopt ordinance to regulate invasive bamboo by prohibiting a person from selling and planting without upkeep and containment



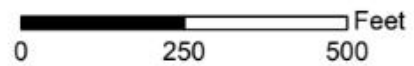
Pemberton Historical Park

Wisteria Location



Mapping Services Provided by Wicomico County
Planning, Zoning & Community Development
May 29, 2019

Approximately 11.5 acres of forest has been
affected by Wisteria.



Wisteria
Trail

3. LES-PRISM Services

- Provide seasonal workshops, outreach, and educational materials on the topics of invasive species identification and treatment protocols;
- Coordinate with state and local government, service providers and NGOs to share resources, manpower and leverage funding for treatment efforts;
- Implement eradication and restoration projects with County and State partners;
- Provide referrals to landowners about upcoming grant and funding opportunities for invasive species treatment;
- Recruit and train citizen volunteers to map invasive species.



Accomplishments

- County & Municipal Invasive Species Trainings
- Stewardship and volunteer efforts
- Donated services
- Invasive Species Toolkit and Contractor Lists for landowners
- Reinstating County Weed Control Programs



Thank you!

Victoria Spice

Victoria.spice@maryland.gov

