



Tim Cole
Sustainability Officer
VP Green Schools National Network

jtcole@vbschools.com

<http://www.vbschools.com/sustainableschools>

Virginia Beach City Public Schools



85 schools

15,000 employees

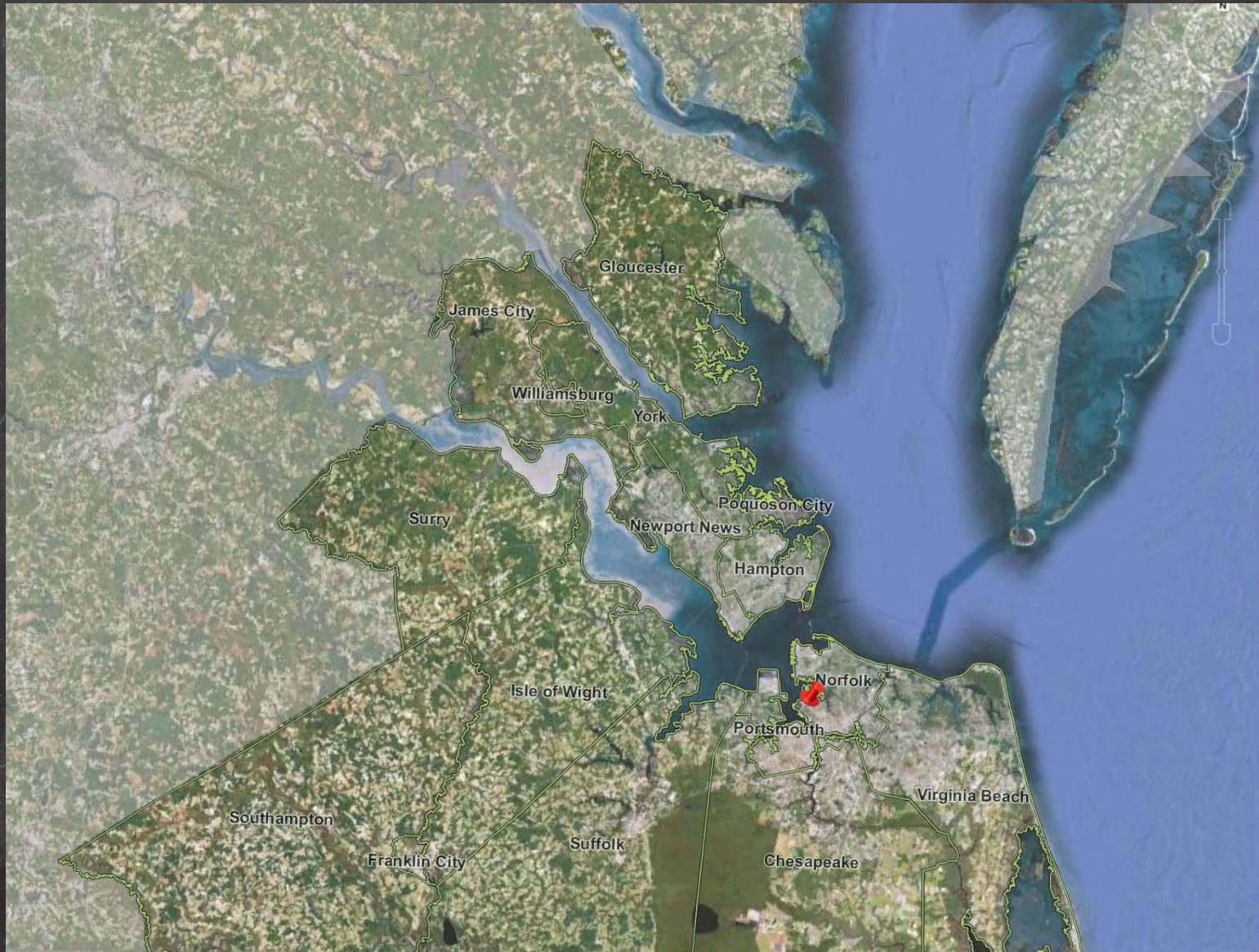
69,000 students

1,900 acres

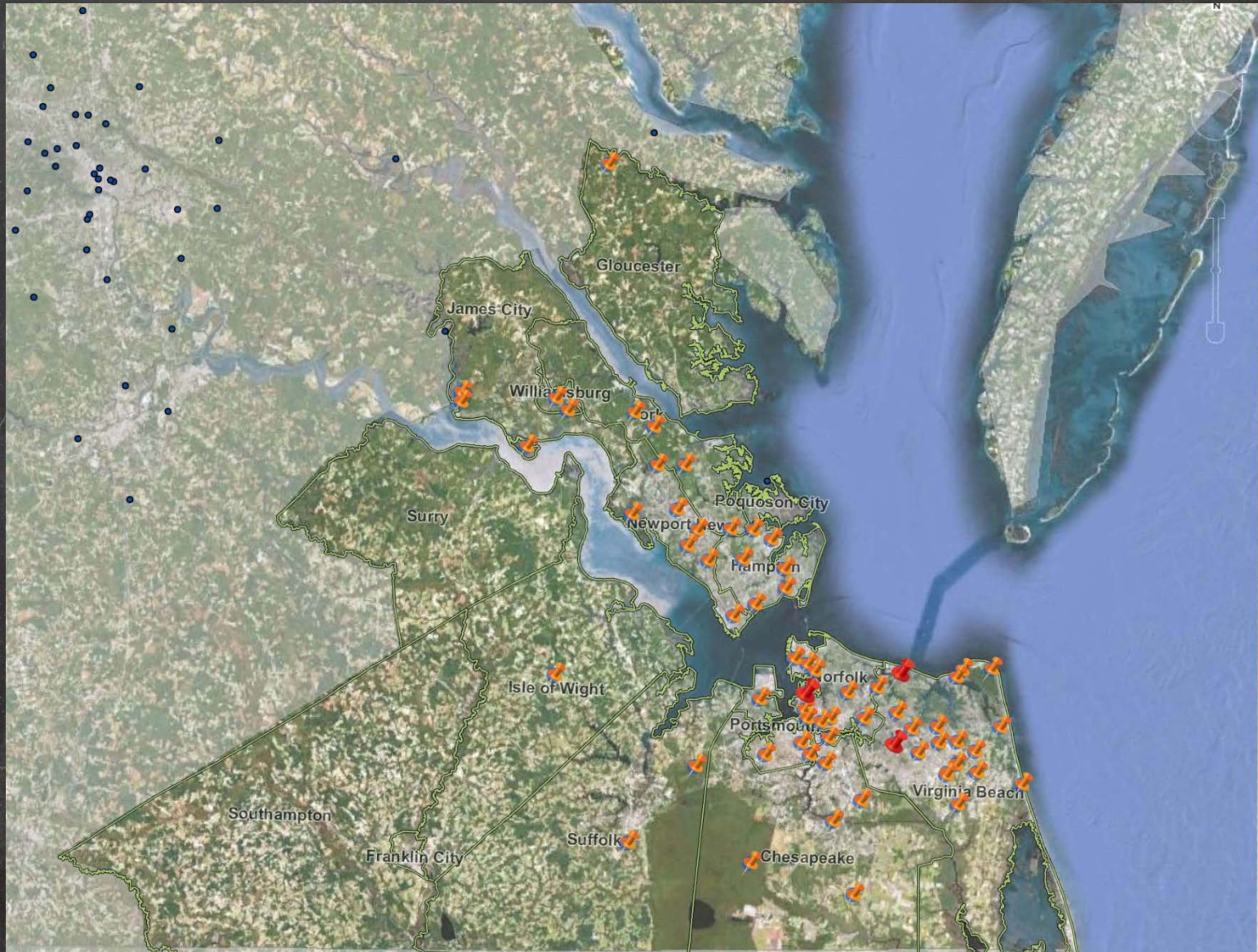
10.6 million square feet
of building space



36th Largest Metropolitan area in the country



Number of USGBC LEED Buildings in Hampton Roads in 2004 (1)



Number of USGBC LEED Buildings in Hampton Roads in 2014 (198)

HOME » NEWS

Report: Va. Beach one of most conservative cities

2011 or latest, 1=most conservative, -1=most liberal

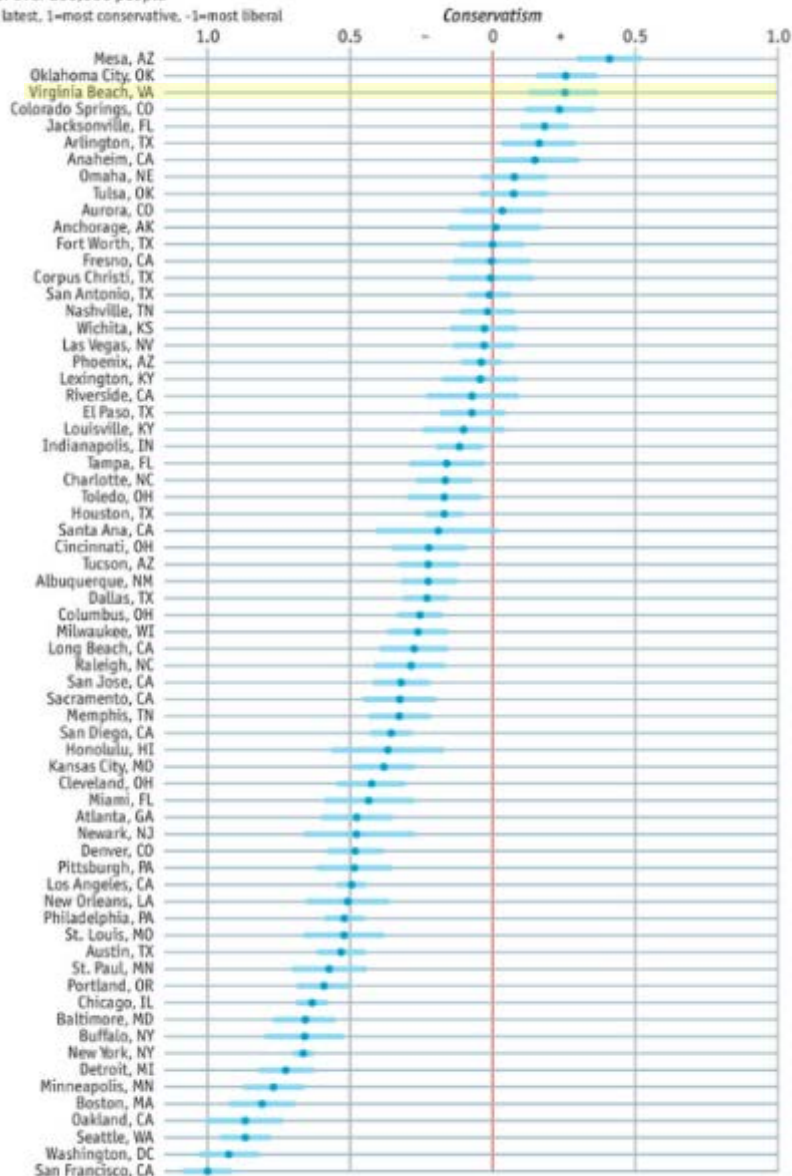
1.0

Mesa, AZ
Oklahoma City, OK
Virginia Beach, VA
Colorado Springs, CO

Conservatism in America

Cities of over 250,000 people

2011 or latest, 1=most conservative, -1=most liberal



Source: "Representation in Municipal Government" by Chris Tausanovitch and Christopher Warshaw
March 2014, American Political Science Review (forthcoming)

Virginia Beach City Public Schools

Sustainability Goals:

1. Develop a sustainable building infrastructure.
2. Integrate sustainable practices throughout the school division.
3. Educate the public about the importance of sustainability.

1.6 million square feet of LEED building space

Emission Reduction Plan

Policy 3-67

62 schools w/ Outdoor teaching gardens

63 schools with environmental clubs

37 regional and national awards



Pupil Transportation & Maintenance Facility (LEED Platinum)

10.6 million S.F. of Building inventory,
1.6 Million S.F. is designated as LEED.



Great Neck MS
LEED GOLD



College Park ES
LEED Platinum



Pupil Transportation
LEED Platinum



Virginia Beach MS
LEED Silver



Renaissance Academy
LEED Gold



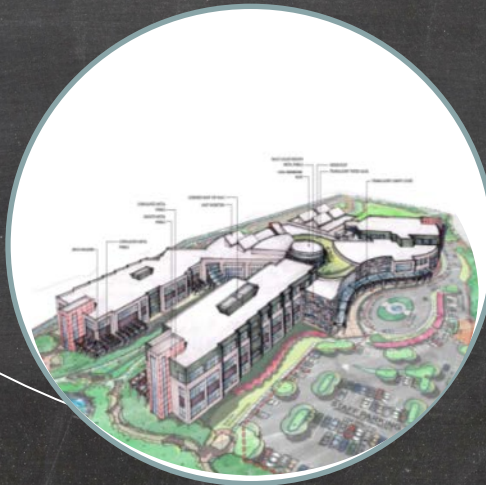
Windsor Oaks ES
LEED Silver



Hermitage ES
LEED Certified



Kellam HS
LEED Gold Pending



ODC/KLMS
LEED Gold Pending

Buildings



College Park ES
LEED Platinum

Pupil Transportation
LEED Platinum

Virginia Beach MS
LEED Silver

Kellam HS
LEED Gold Pending

School Name	Year Opened	Const. Cost	Regional Average	LEED Status	LEED Cost	% of Project
Hermitage Elementary	2005	\$102/SF	\$130/SF	Certified		
Windsor Oaks Elementary	2010	\$168/SF	\$189/SF	Silver		
Renaissance Academy	2010	\$187/SF	\$203/SF*	Gold	\$1.45 Mill	2.2%
Virginia Beach Middle	2010	\$209/SF	\$232/SF	Silver	\$1.17 Mill	2.5%
Great Neck Middle	2011	\$166/SF	\$236/SF	Gold	\$525,000	2.4%
Pupil Transportation	2011	\$185/SF	NA	Platinum	\$375,000	1.7%
College Park Elementary	2011	\$195/SF	\$234/SF	Platinum	\$1.48 Mill	1.45%
Kellam High School	2014	\$214/SF	\$232/SF	Gold (Projected)		

Regional Average Data provided by "School Planning & Management's" Annual School Construction Report.



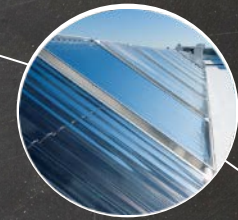
Lighting



Cool Roof Systems



Photovoltaics



Solar Hot Water



Geothermal

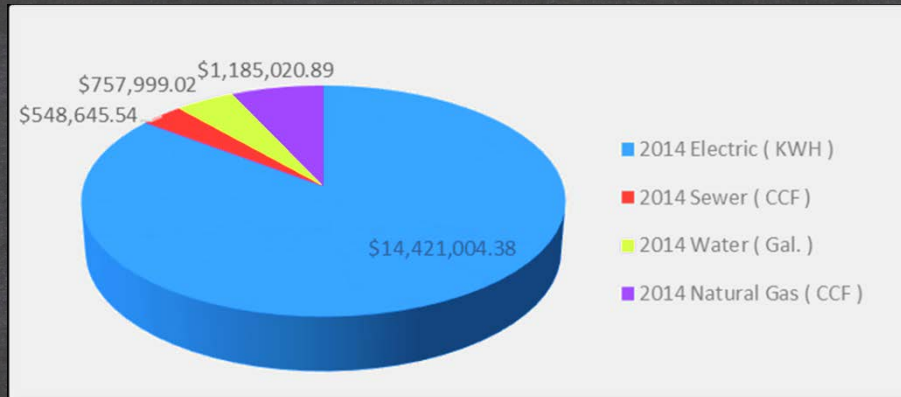


HVAC Replacement



Energy Star
27 Schools
2.8 Million SF

Energy Star and performance contracting are key components in our sustainable infrastructure program.



Total Utility Cost for FY14 \$16,912,670

Change in Average ENERGY STAR Score

+25 ▶ Change in Average ENERGY STAR Score

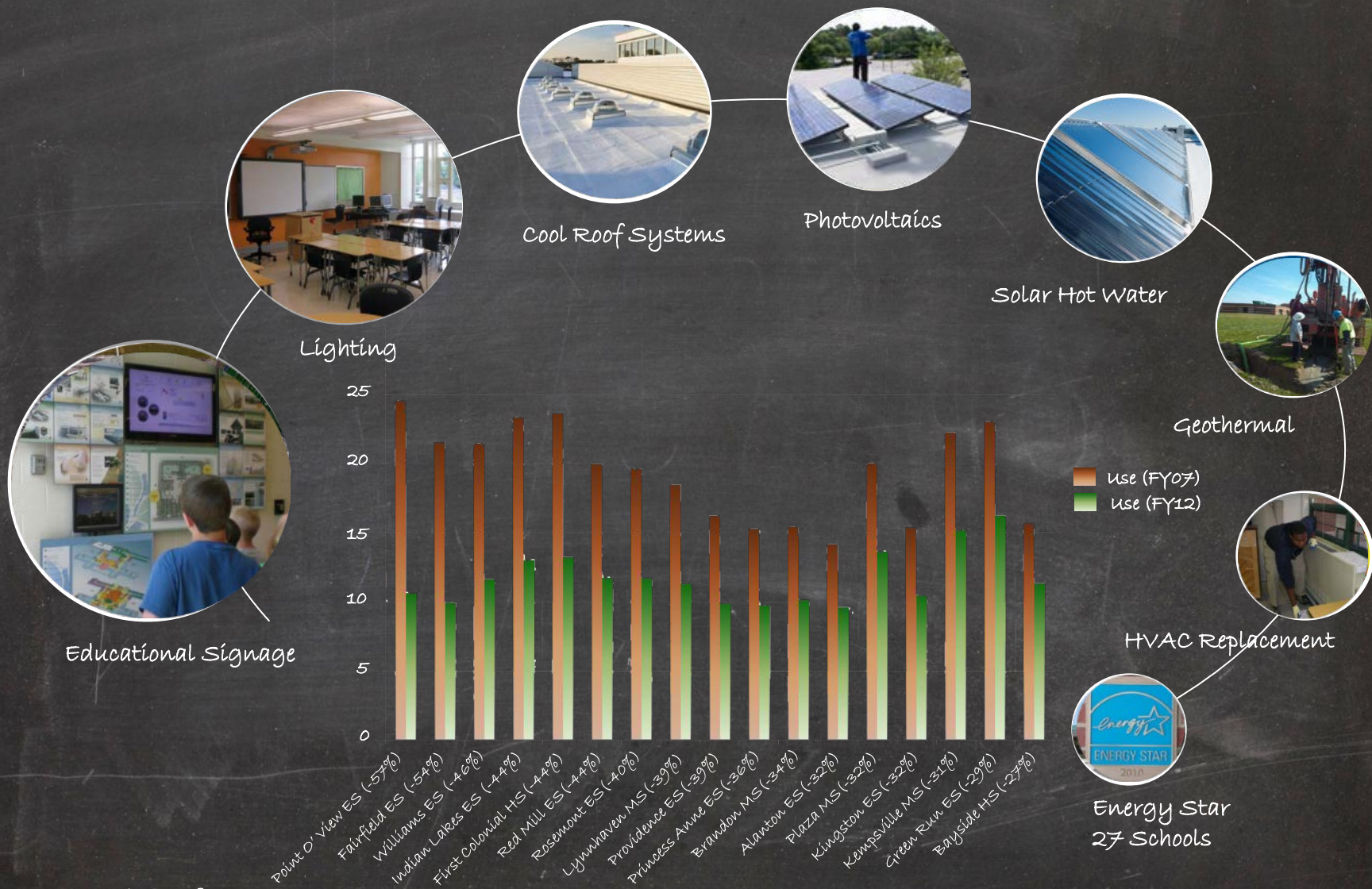
59 ▶ Current Average ENERGY STAR Score

34 ▶ Baseline Average ENERGY STAR Score

Average VBCPS Energy Star Score FY08=34
Average VBCPS Energy Star Score FY14=59



Educational Signage



Since November of 2008

- \$14M in Contract work
- \$1.8M in cost avoidance/yr

Performance contracting



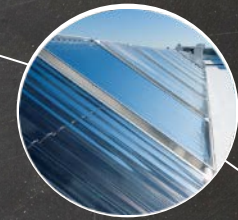
Lighting



Cool Roof Systems



Photovoltaics



Solar Hot Water



Divisional SF



Energy Use / SF



Energy Star
28 Schools

Since FY06, VBCPS SF has increased nearly 9%
-During this time, energy use per square foot has declined 21%



Sustainable
Schools Liaisons



Sustainable
Schools Committee

Committee is comprised of representatives from departments throughout the division; school Plant, custodial, purchasing, technology, transportation, etc.....



Teaching Gardens



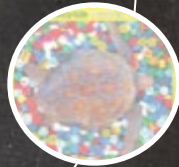
Environmental
Clubs



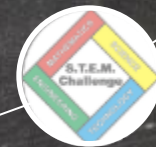
Outreach



Cell phone recycling



Plastic cap recycling



STEM and the built environment

- Green Cleaning program (Green Seal and EPA's DFE, certifications)
- Team Cleaning program
- Removal of personal appliances across the division.
- Elimination of Styrofoam trays
- Reusable utensils
- Purchasing of Local Produce
- No idle policy
- Reduce transportation stops
- Installation of GPS devices in vehicles
- Adjusted temperature range
 - 71-75 during occupied, 78 in gyms (with some exceptions)
 - 63 & 80 on unoccupied setback
- Four day work week during summer
- Holiday and Break set-backs
- Remove manual HVAC overrides
- Performance contracting
- LEED construction
- GHG Emissions study
- Sustainability Report
- Etc.....

Initiatives introduced through the committee are responsible for over two million dollars in cost avoidance each year.



Personal Appliances



Sustainable Schools Liaisons



Teaching Gardens



Environmental Clubs



Outreach



Cell phone recycling



Plastic cap recycling

- Green Cleaning program (Green Seal and EPA's DFE, certifications)
- Team Cleaning program
- Removal of personal appliances across the division.
- Elimination of Styrofoam trays
- Reusable utensils
- Purchasing of Local Produce
- No idle policy
- Reduce transportation stops
- Installation of GPS devices in vehicles
- Adjusted temperature range

	Coffee Makers	Microwaves	Mini-Fridges	Toaster Ovens	Space Heaters	Other	Totals	Responses	Total Est. Annual Cost
ES	180	610	760	29	58	53	1690	49	
MS	85	252	355	32	17	35	776	11	
HS	109	348	364	29	37	29	916	14	
Auxiliary	5	11	20	3	12	5	56	3	
Totals	379	1221	1499	93	124	122	3438	77	
Estimated Annual Cost	\$5,257	\$9,534	\$273,105	\$884	\$2,945				\$291,725

All but 11 schools responded to the survey.

Currently have 150 Sustainable School Liaisons.

This is a voluntary position with no additional pay.



Teaching Gardens



Environmental Clubs



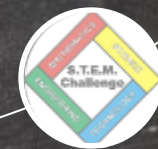
Outreach



Cell phone recycling



Plastic cap recycling



STEM and the built environment



Buildings

Teachers that attend annual Liaison training earn license renewal points and professional learning points.

Sustainable Schools Liaisons



Sustainable Schools Committee

We currently have 62 schools with teaching gardens.



Teaching Gardens



Environmental Clubs



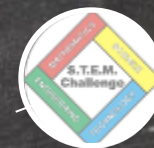
Outreach



Cell phone recycling

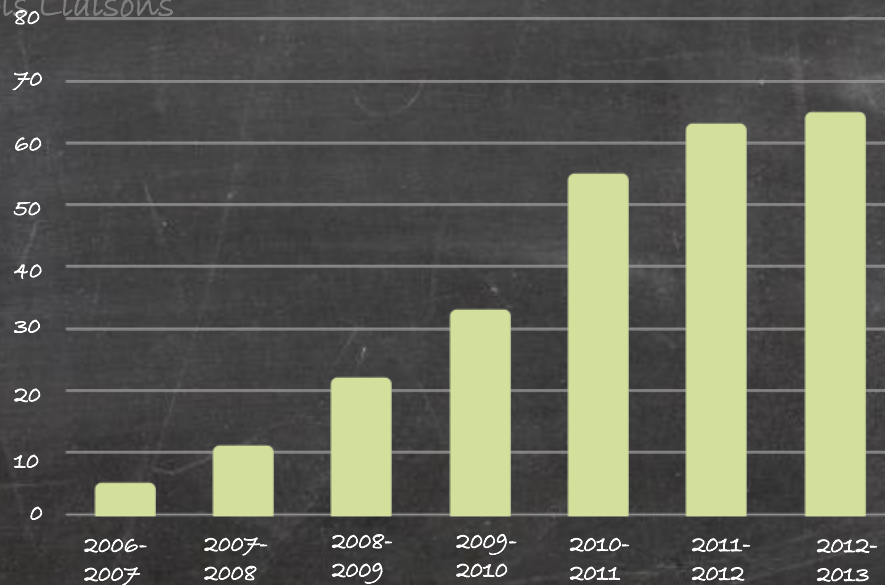


Plastic cap recycling



Sustainable Schools Committee

Sustainable Schools Liaisons



Teaching Gardens

We currently have 70 schools with environmental clubs.

1,931 students last year.



Teaching Gardens



Environmental Clubs



Outreach



Cell phone recycling

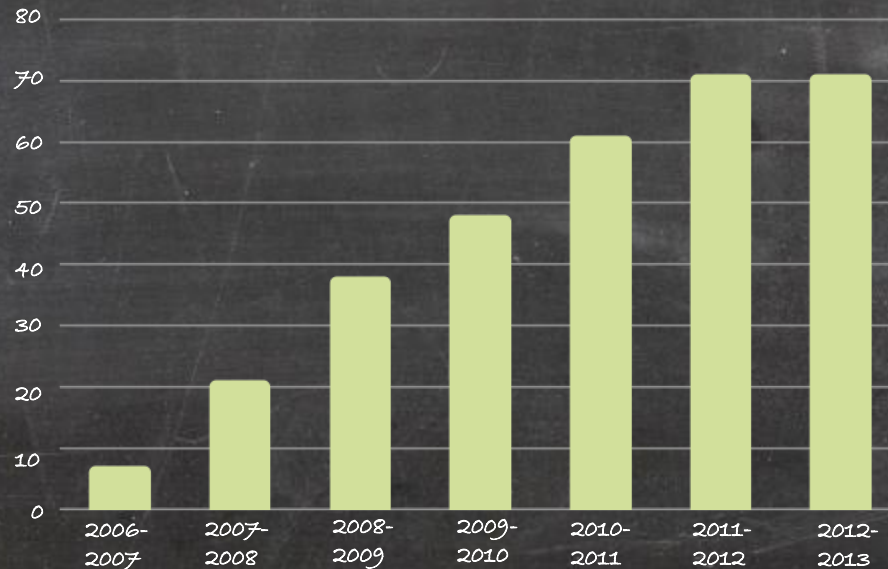


Plastic cap recycling



Sustainable Schools Committee

Sustainable Schools Liaisons



Environmental Clubs





- Resiliency -Terrain and situation dictate (expect change and be ready for it)
- Embrace risk (better to ask for forgiveness than permission)
- Lead by example
- “Better than most” is not acceptable



THE ONLY EASY DAY WAS YESTERDAY

em·pa·thy

'empəTHē/

noun

1.the ability to understand and share
the feelings of another.

