

# CBP Adaptive Management Implementation

Update and Suggestions for the  
Urban Stormwater Workgroup

Greg Allen, EPA CBPO

April 30, 2012

# Adaptive Management Update USWG

- Principals and Drivers
- The Decision Framework
- Progress with GIT Implementation
- Benefits Emerging
- Connecting Strategy: GITs to Workgroups
- Suggestions for USWG

# Adaptive Management Update USWG

## Principals and Drivers

### Adaptive Management

- Act while acknowledging uncertainty
- Design actions to provide learning
- Adjust strategy based on improved understanding

### Drivers

- Popular best practice
- Report to Congress; NAS recommendations; TMDL Section 10; Chesapeake*Stat* utility

# Adaptive Management Update USWG

## The Decision Framework

Adopted by the PSC May 10, 2011 (extensive contribution of design and leadership by C. Hershner VIMS):

1. Articulate program goals
2. Describe factors influencing goal attainment
3. Assess current management efforts (and gaps)
4. Develop management strategy
5. Develop monitoring program.
6. Assess performance.
7. Manage adaptively.

# Adaptive Management Update USWG

## Progress with GIT Implementation

- All GITs engaged and on-track
- “First pass” due date of 3/30 met
- Some workgroup DFs; needed to complete application for complete CBP strategy
- MB update in May and content moved to *ChesapeakeStat* prior to EC meeting

# Adaptive Management Update USWG

## GIT Benefits Emerging

- Reviews and refreshes goals
- Shows justification for what groups are doing
- Reenergizes stalled groups
- Creates a record of strategy
- Identifies gaps in strategy
- Variety of metrics integrated and metric gaps id'd
- Changes posture for external evaluations
- Promotes alternatives analyses; cost/benefit
- Pulls together strategy management system tools
- Promotes cross-GIT coordination

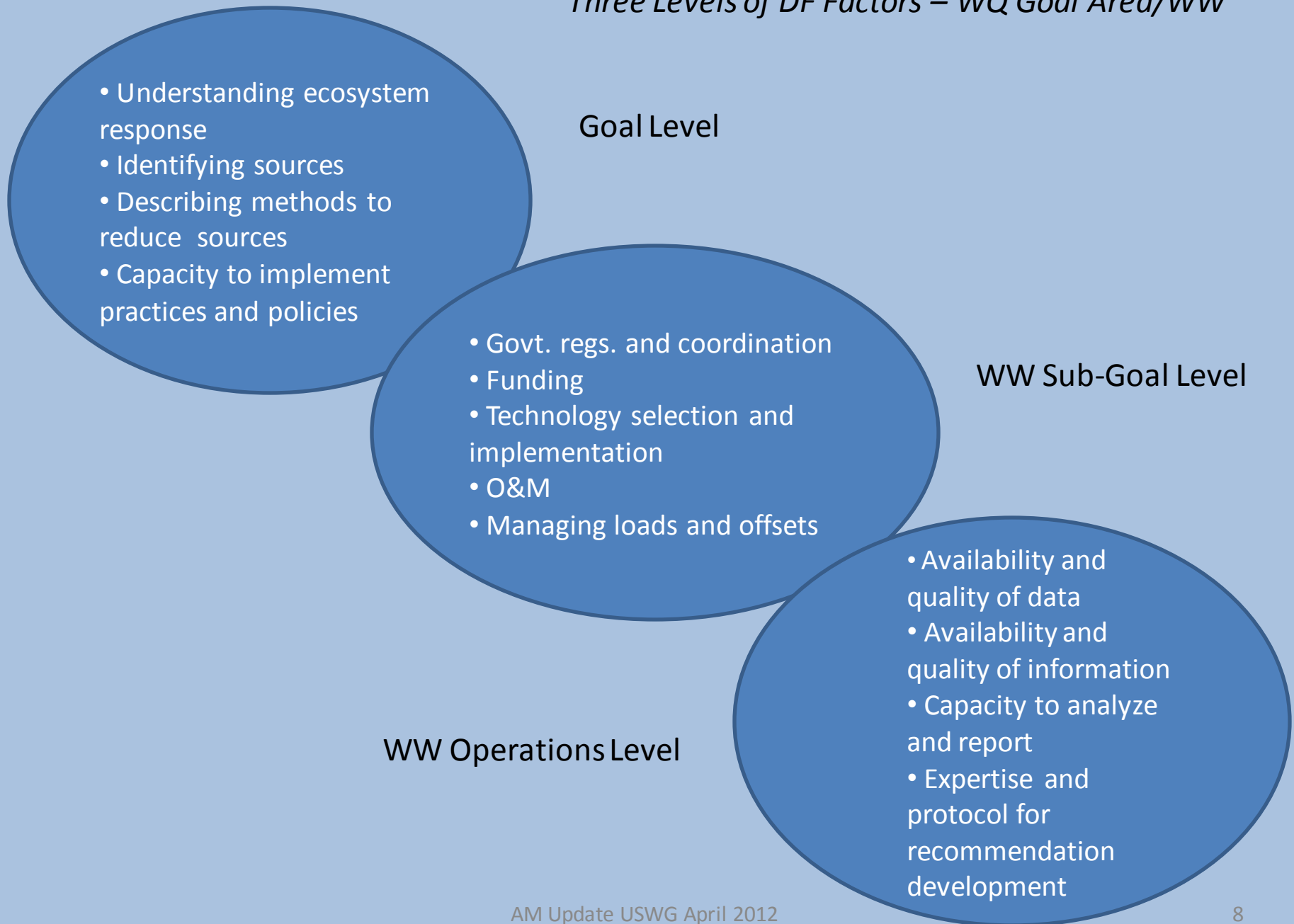
# Adaptive Management Update USWG

## Connecting Strategy: GITs/Wkgps

How do we show logical connections between higher GIT level goals and workgroup goals including unique factors and roles in achieving goals assigned to sector experts in workgroups?

Answer: Both levels are needed; use logic structure to show relationships.

## *Three Levels of DF Factors – WQ Goal Area/WW*





# Adaptive Management Update USWG

## Next Step Suggestions for USWG

- Coordinate with DF workgroup on lessons learned and approaches for developing USWG DF
- Use as an opportunity to tell strategy and performance story relative to WQGIT goal to reduce N, P and S to meet the TMDL
- Reflect broad sector strategy and USWG unique support role