

# Soil Phosphorus History

Andrew Sommerlot<sup>1</sup>, Gary Shenk<sup>2</sup>

<sup>1</sup>UMCES

<sup>2</sup>USGS

# Soil P History

Soil P is an Important Sensitivity

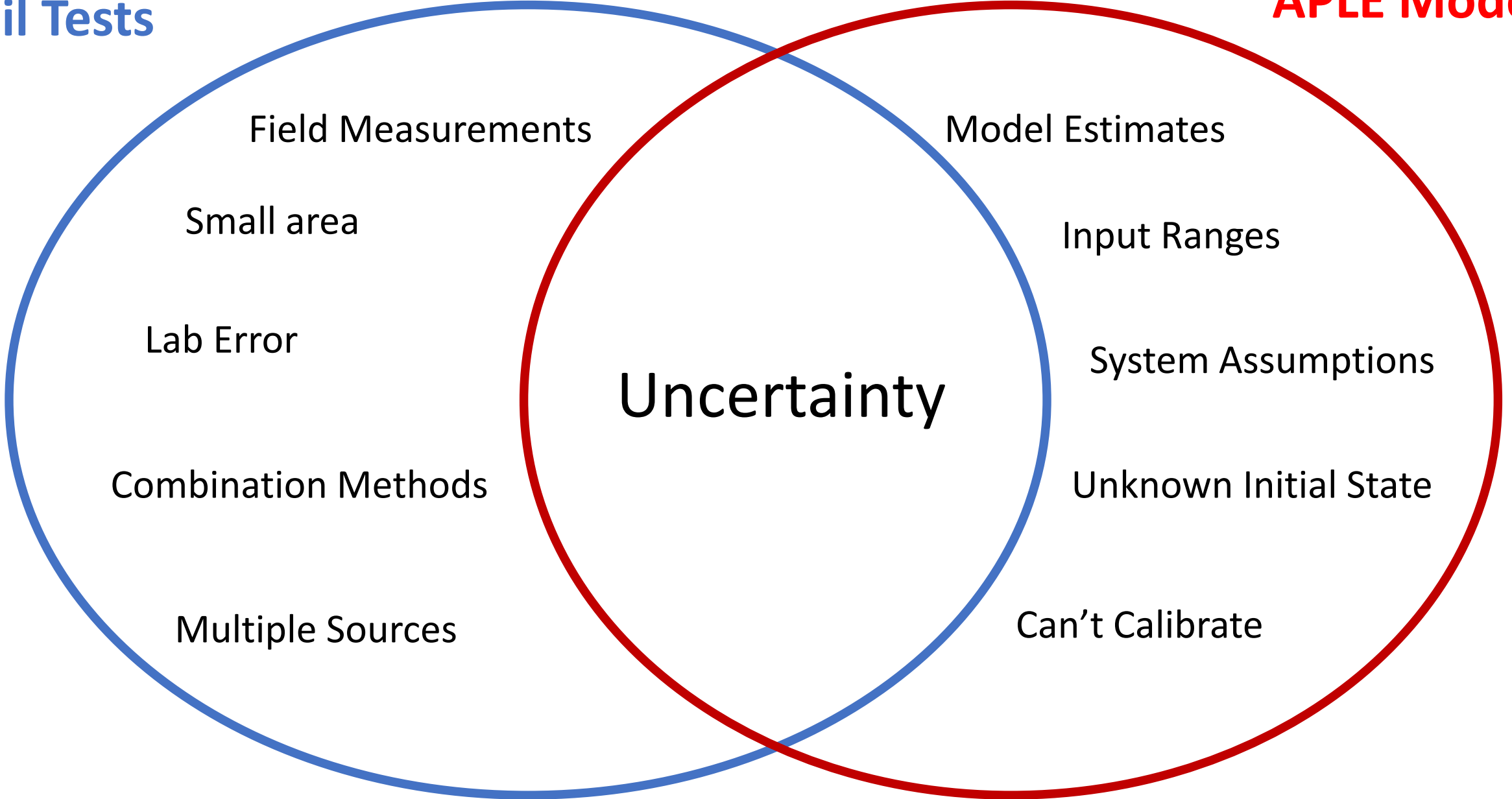
Soil Tests

Annual Phosphorus  
Loss Estimator  
(APLE)

Both sets of data have problems providing satisfactory estimates

**Soil Tests**

**APLE Model**



Field Measurements

Small area

Lab Error

Combination Methods

Multiple Sources

Model Estimates

Input Ranges

System Assumptions

Unknown Initial State

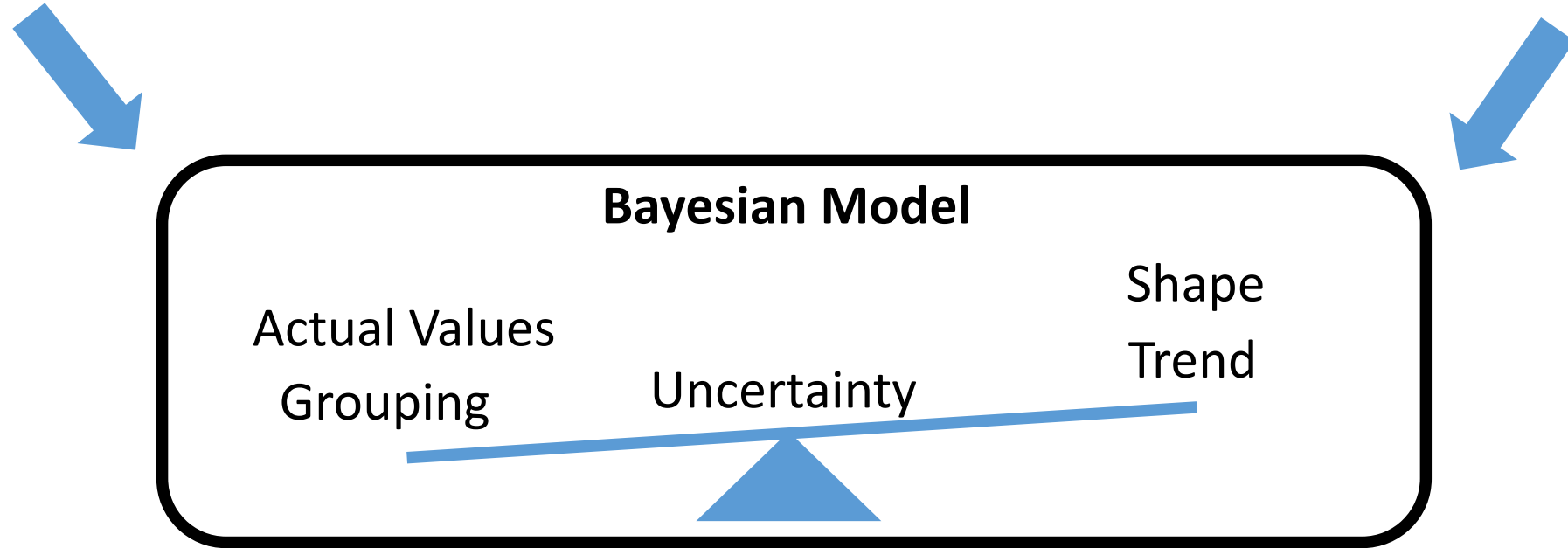
Can't Calibrate

Uncertainty

Balance of what the two data sets are telling us

**Soil Tests**

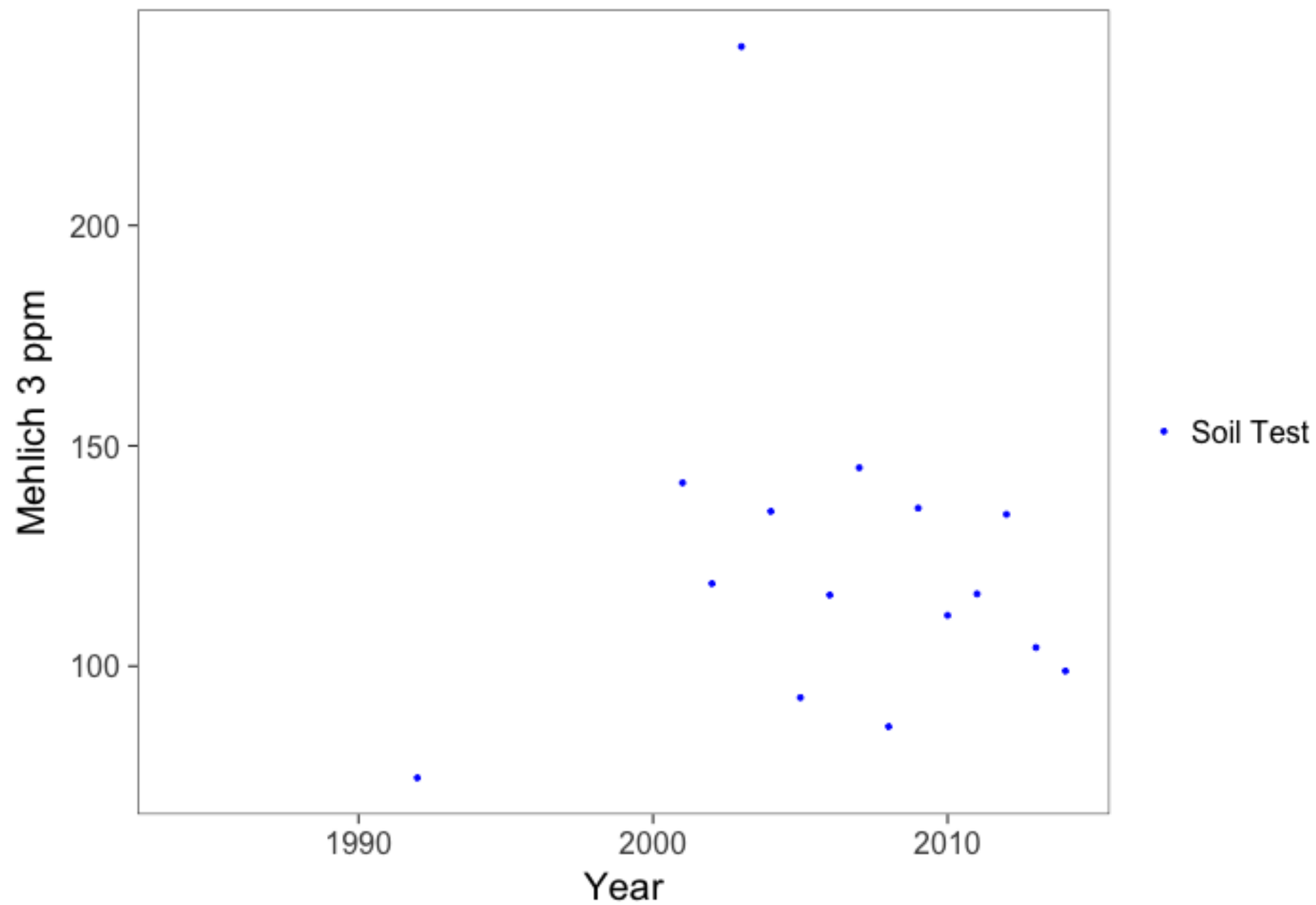
**APPLE Model**



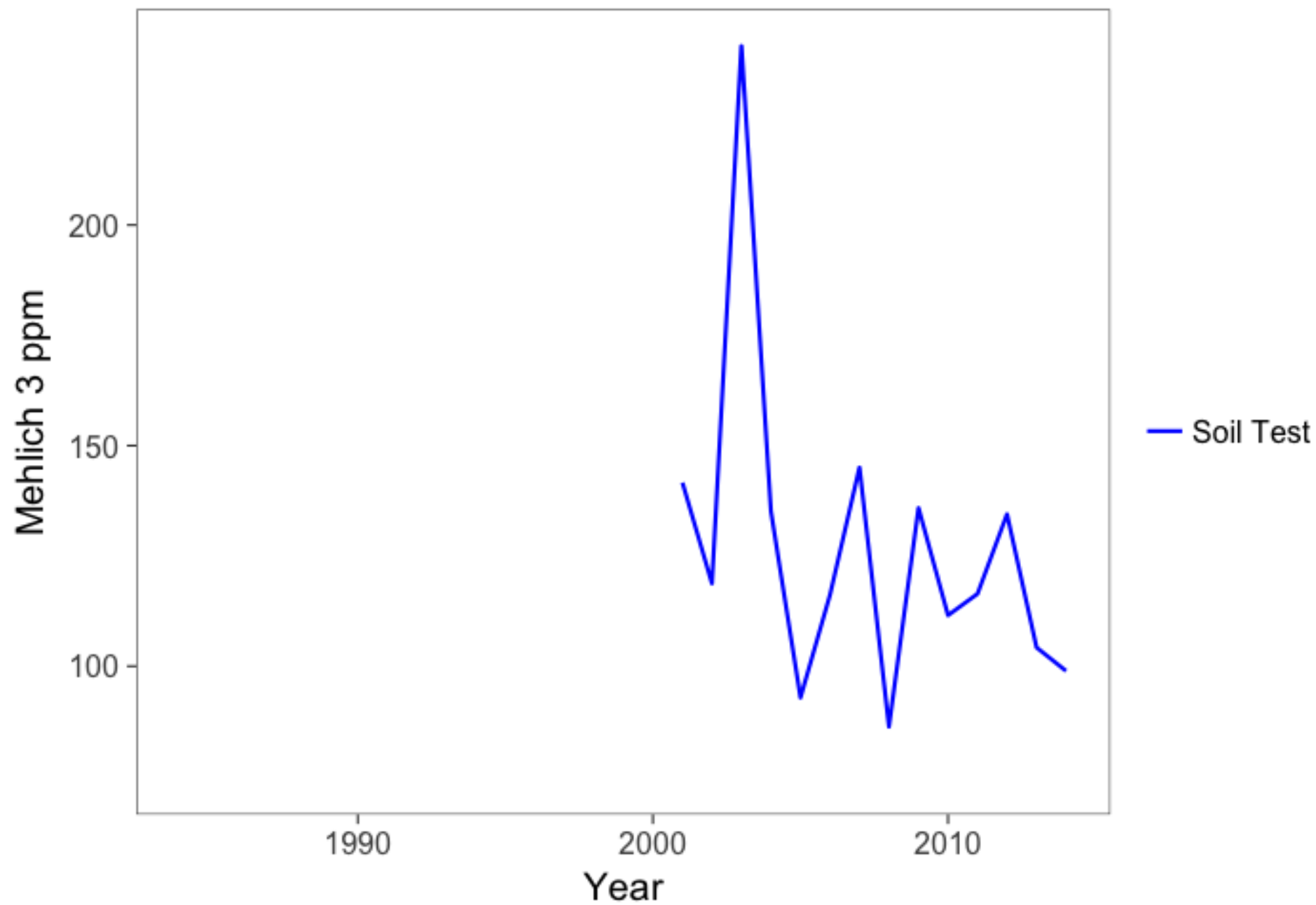
**Final Estimate**

What does it look like with real data?

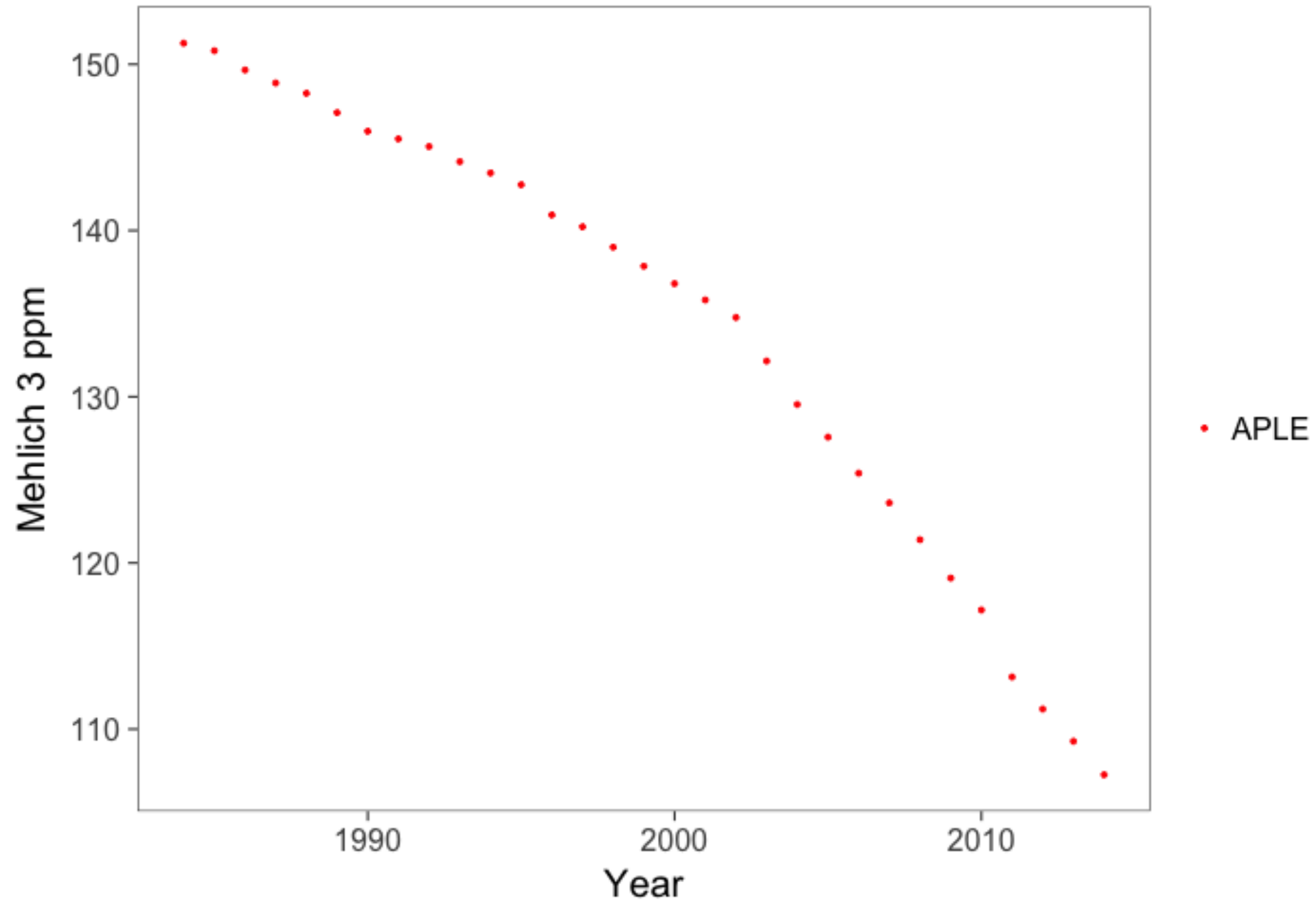
# Single Land Segment and Landuse



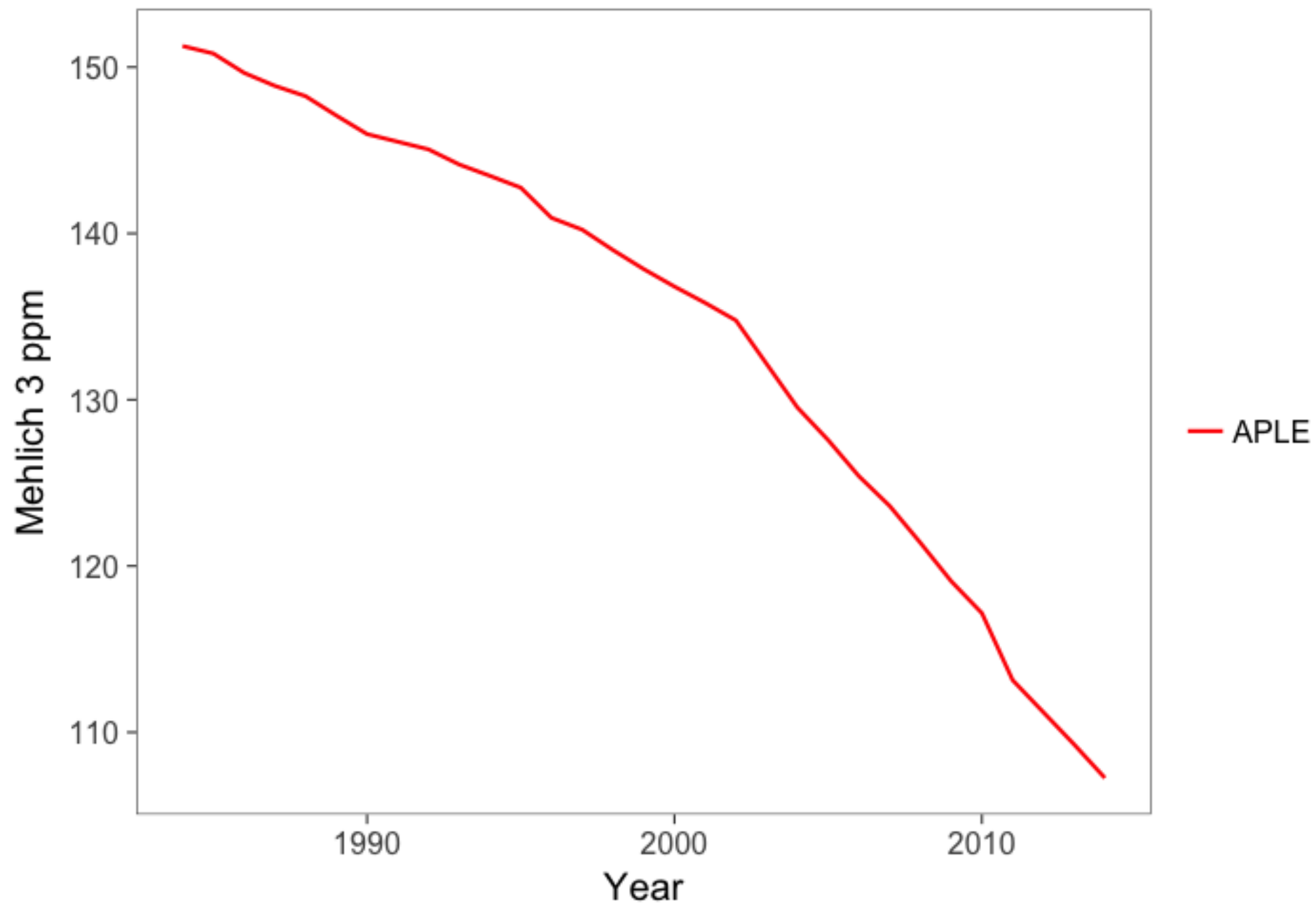
# Single Land Segment and Landuse



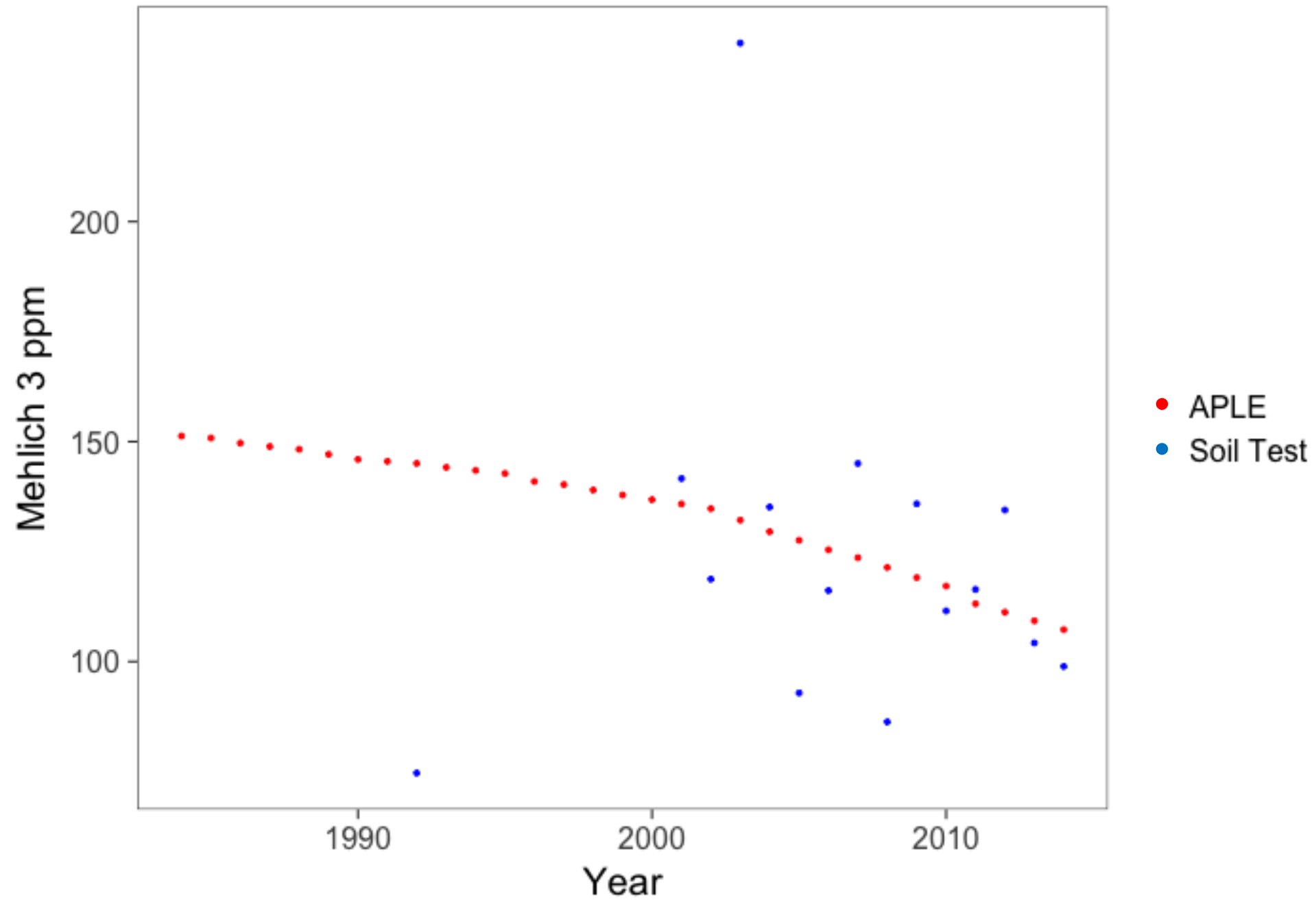
# Single Land Segment and Landuse



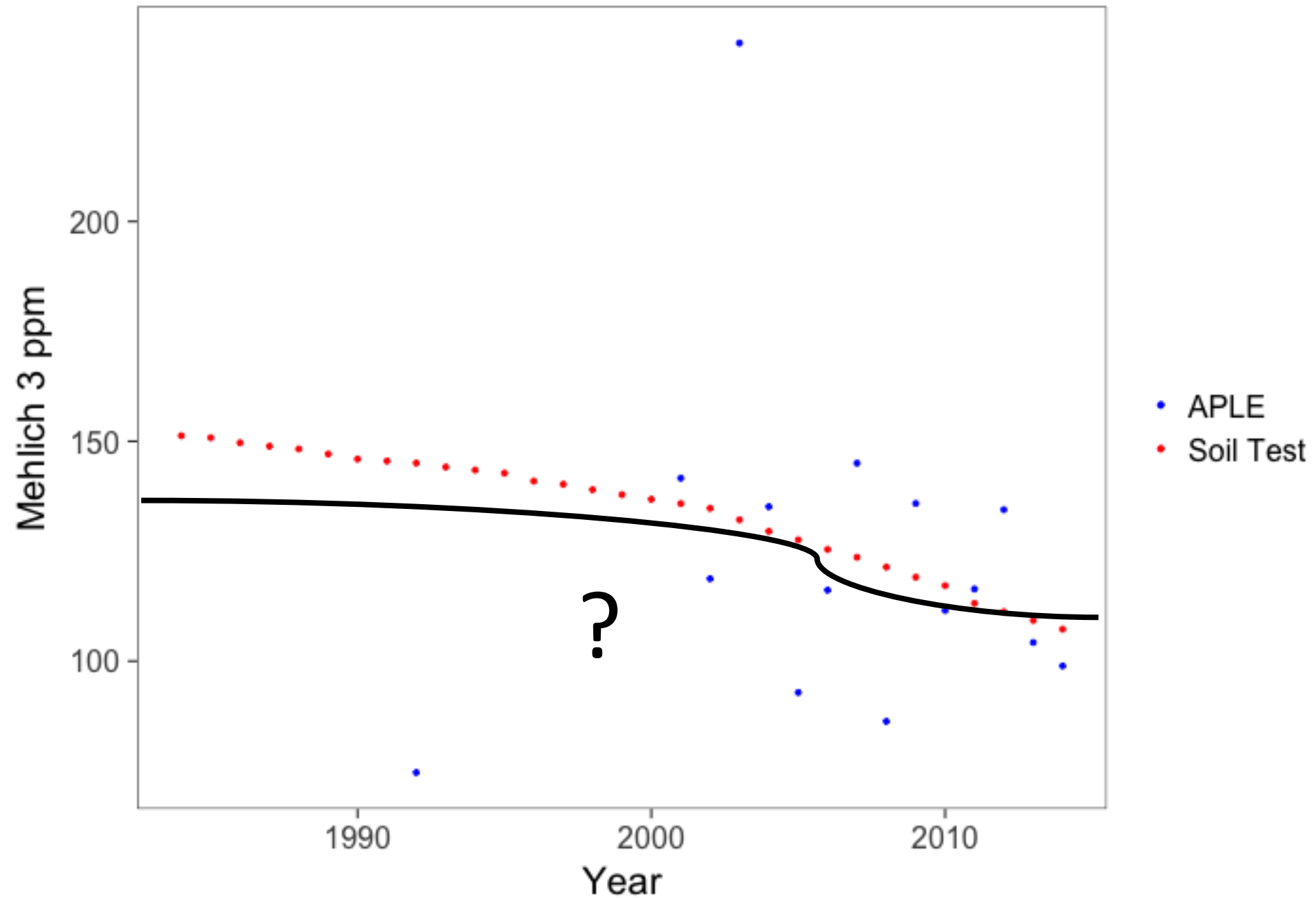
## Single Land Segment and Landuse



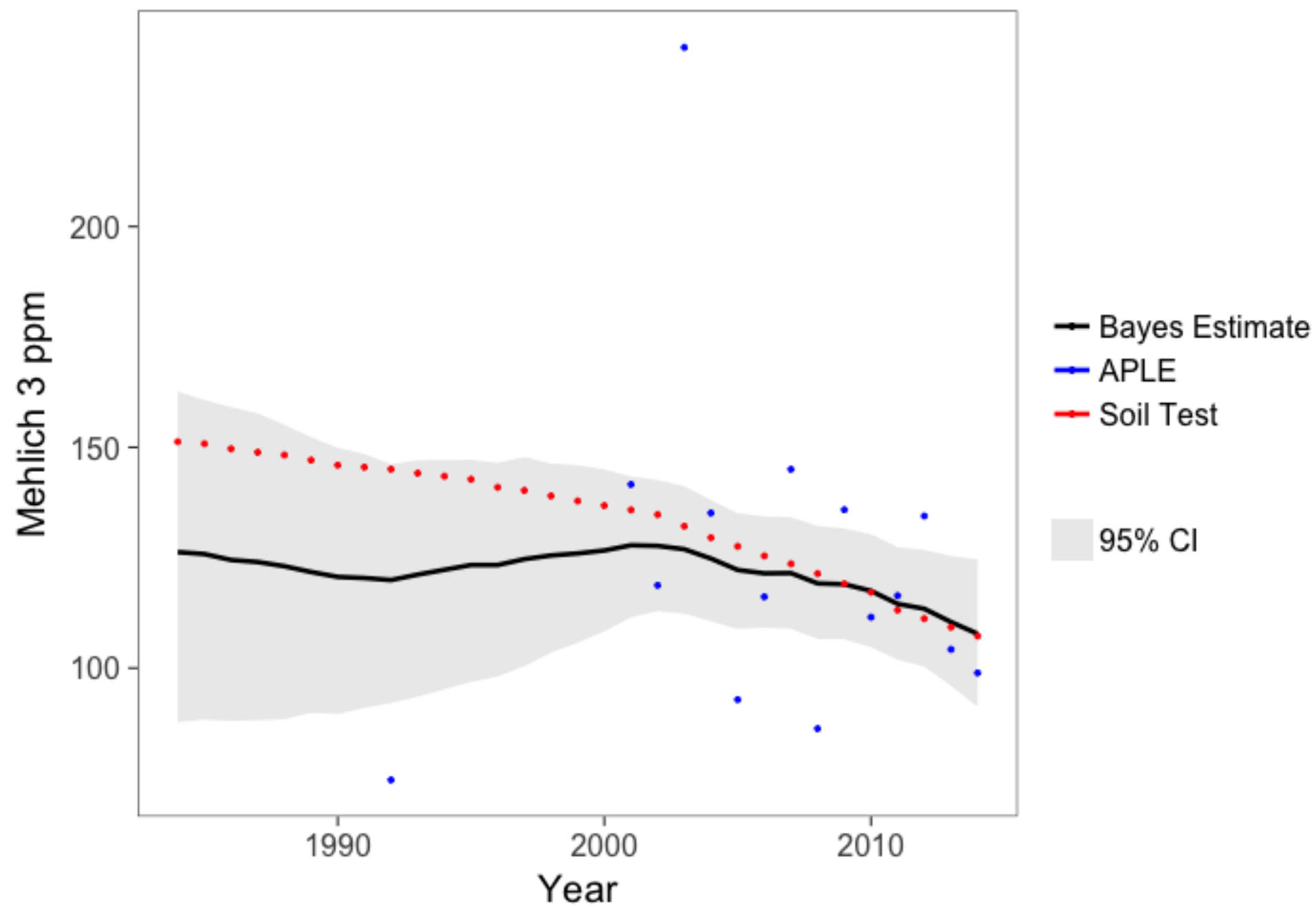
# Single Land Segment and Landuse



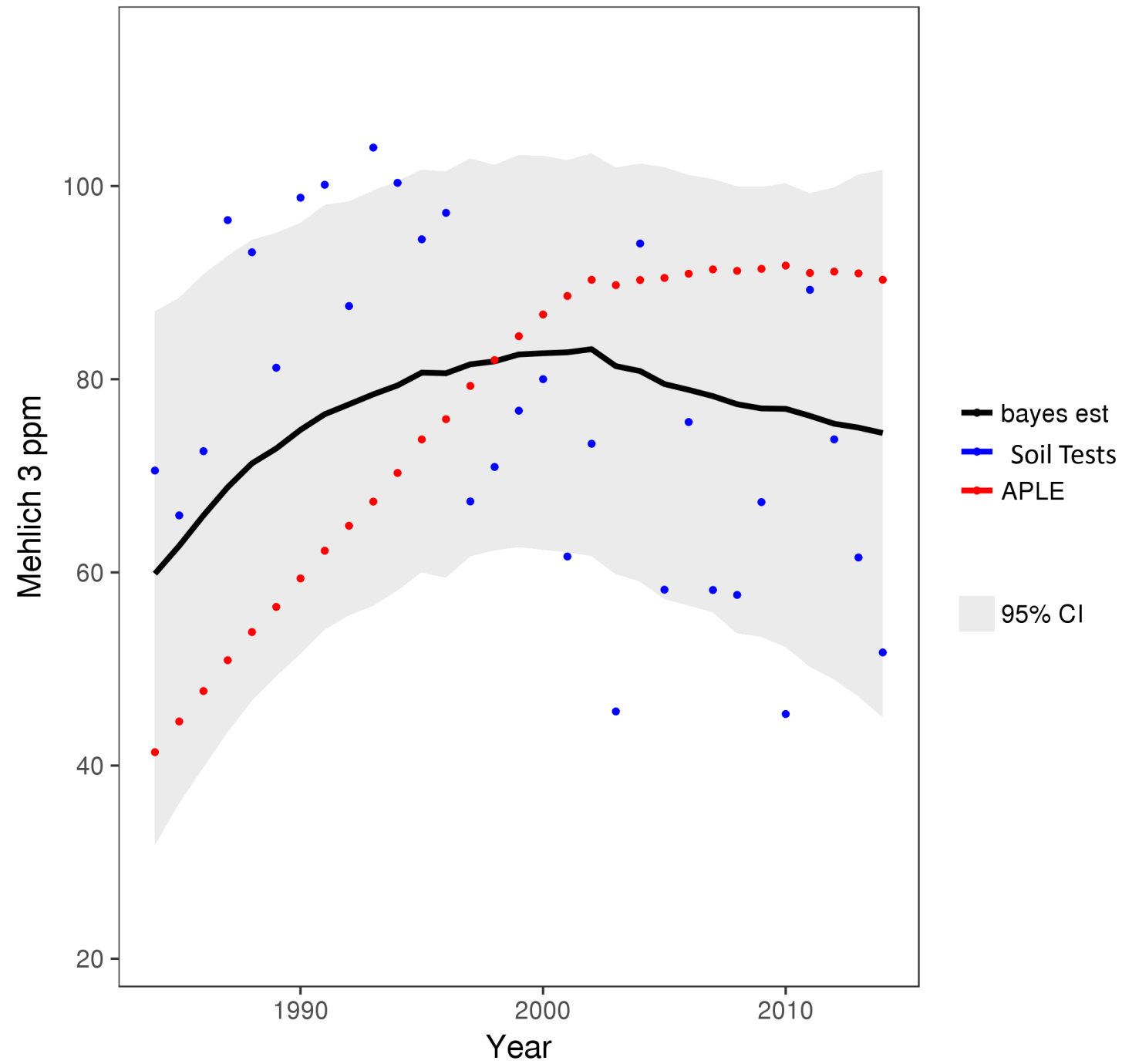
# Single Land Segment and Landuse

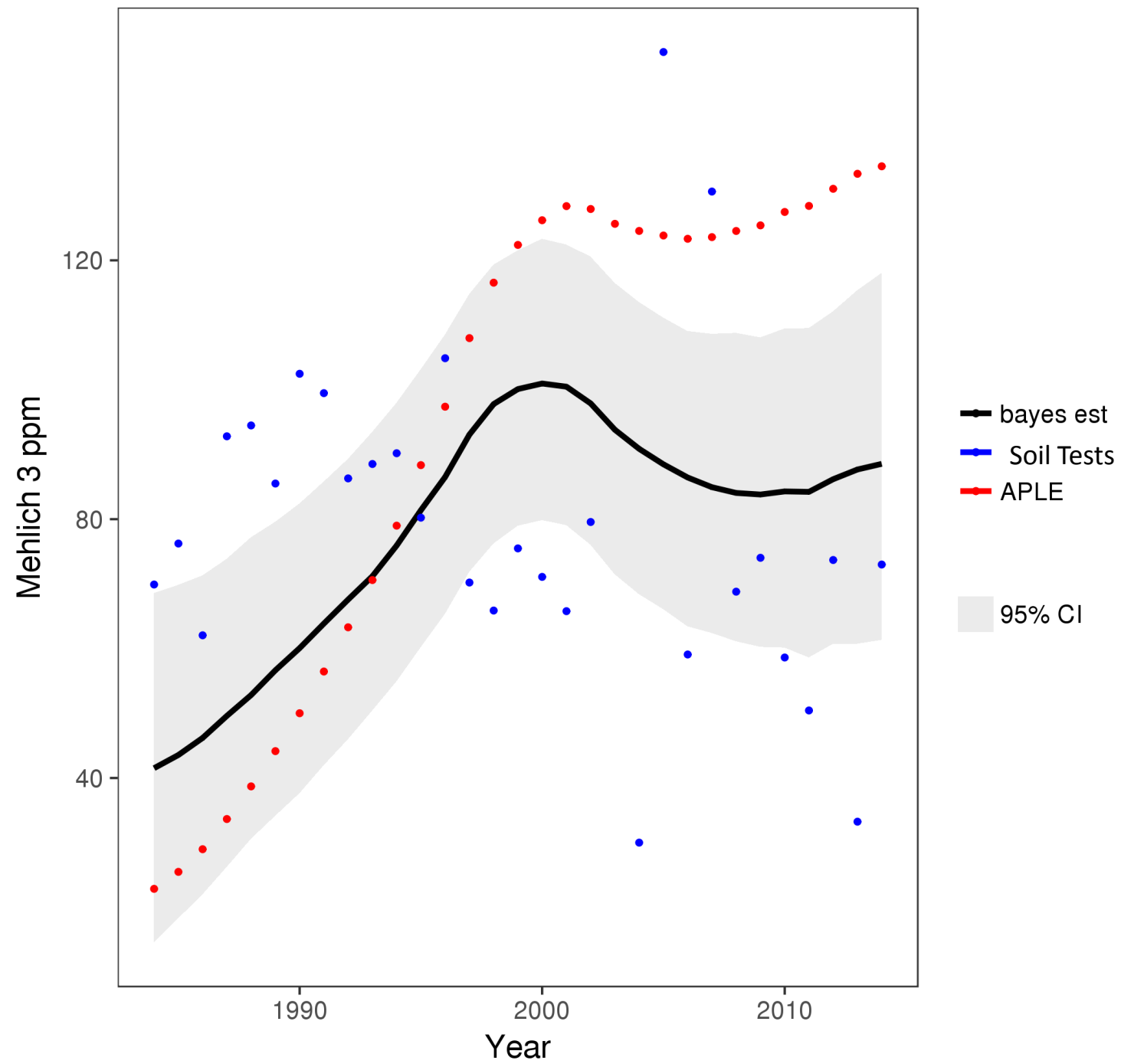


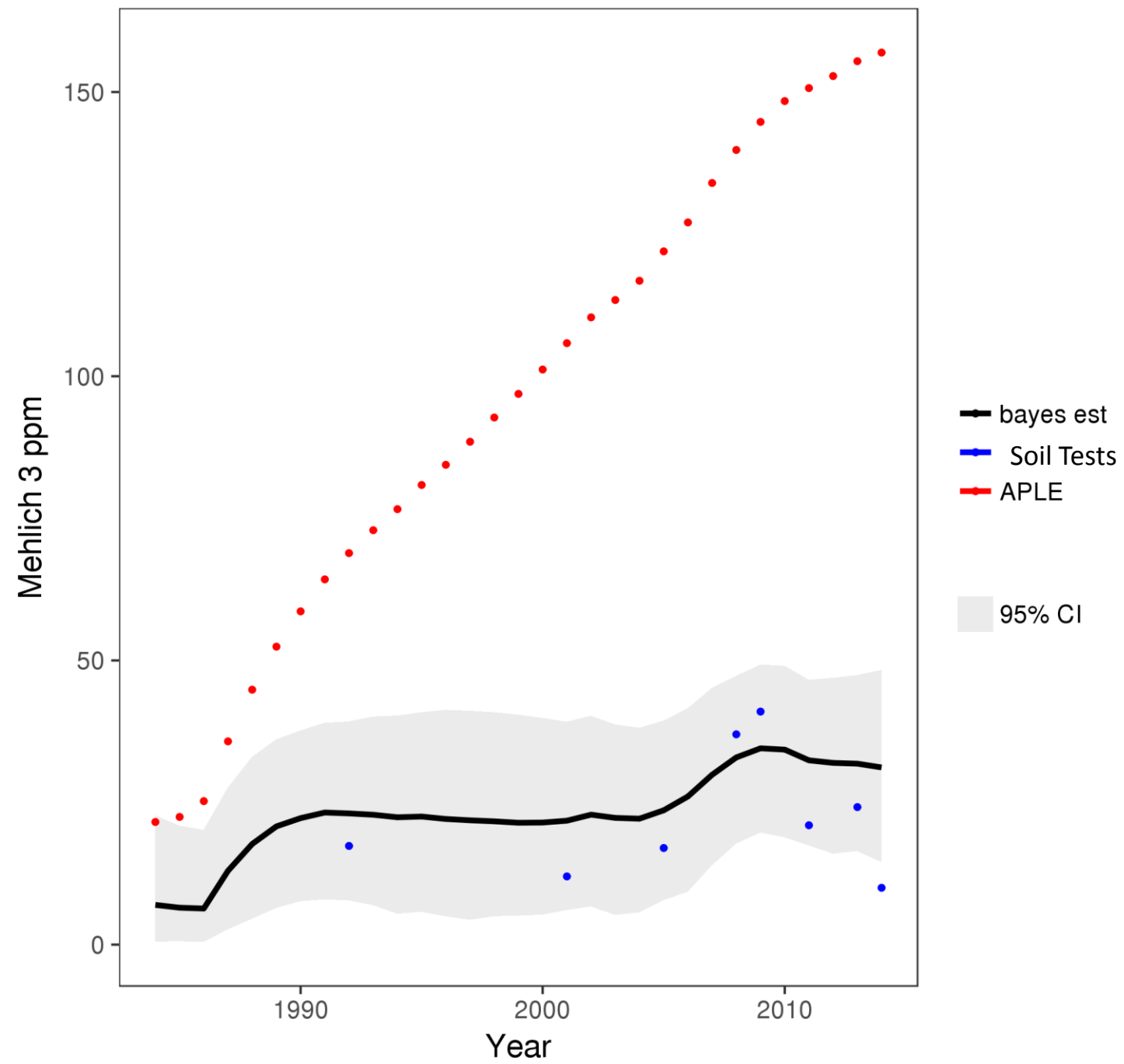
# Single Land Segment and Landuse

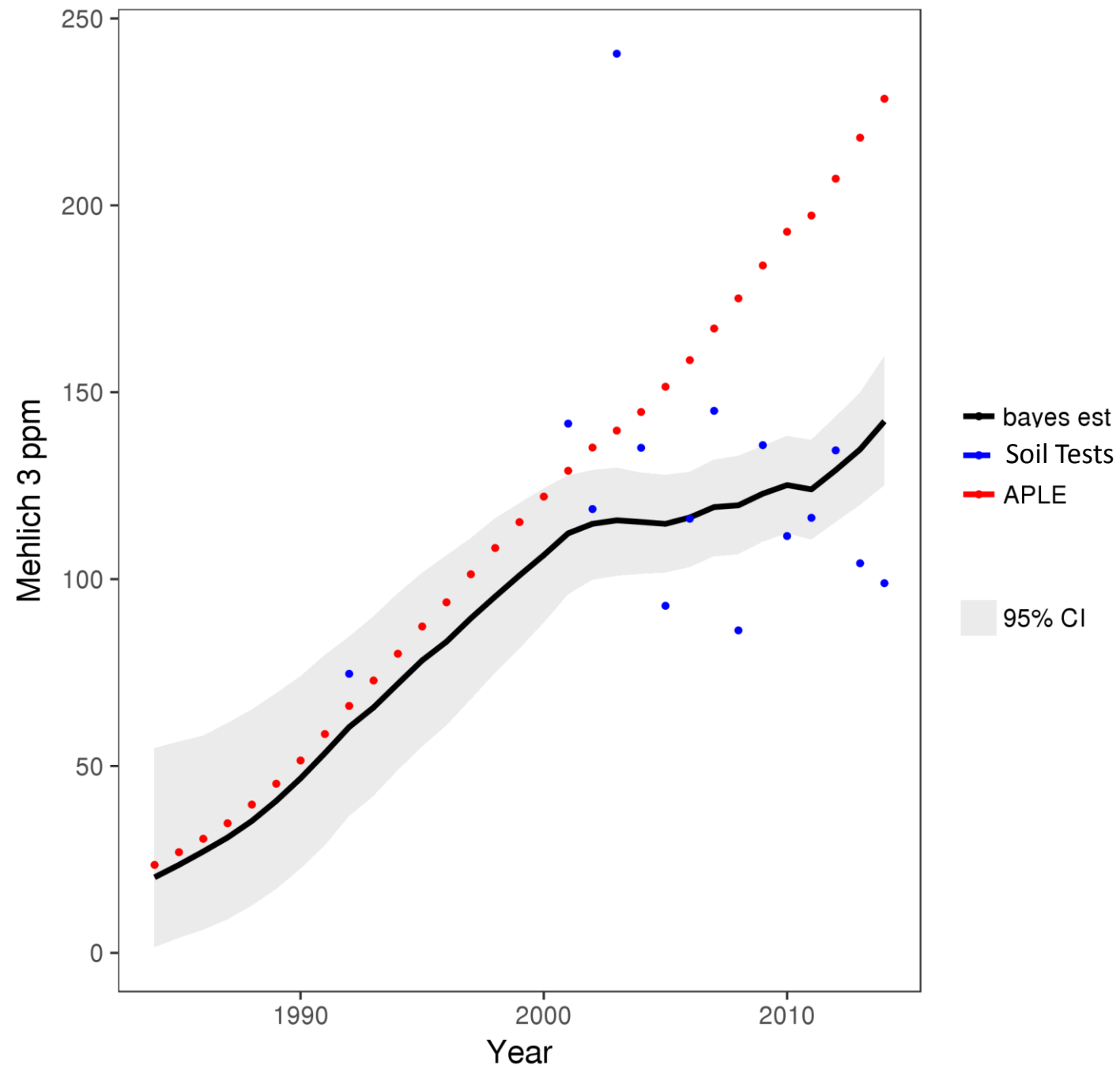


# Examples









# Summary

Soil Test Data



The APLE model



A Combination of the Two Incorporating Uncertainty

