

WEP Sensitivities

WEP = Water Extractable Phosphorus

Why Care?

Excluding WEP in P loss estimates might not be good enough for modeling all types of applications
(like biosolids)

WEP = Water Extractable Phosphorus

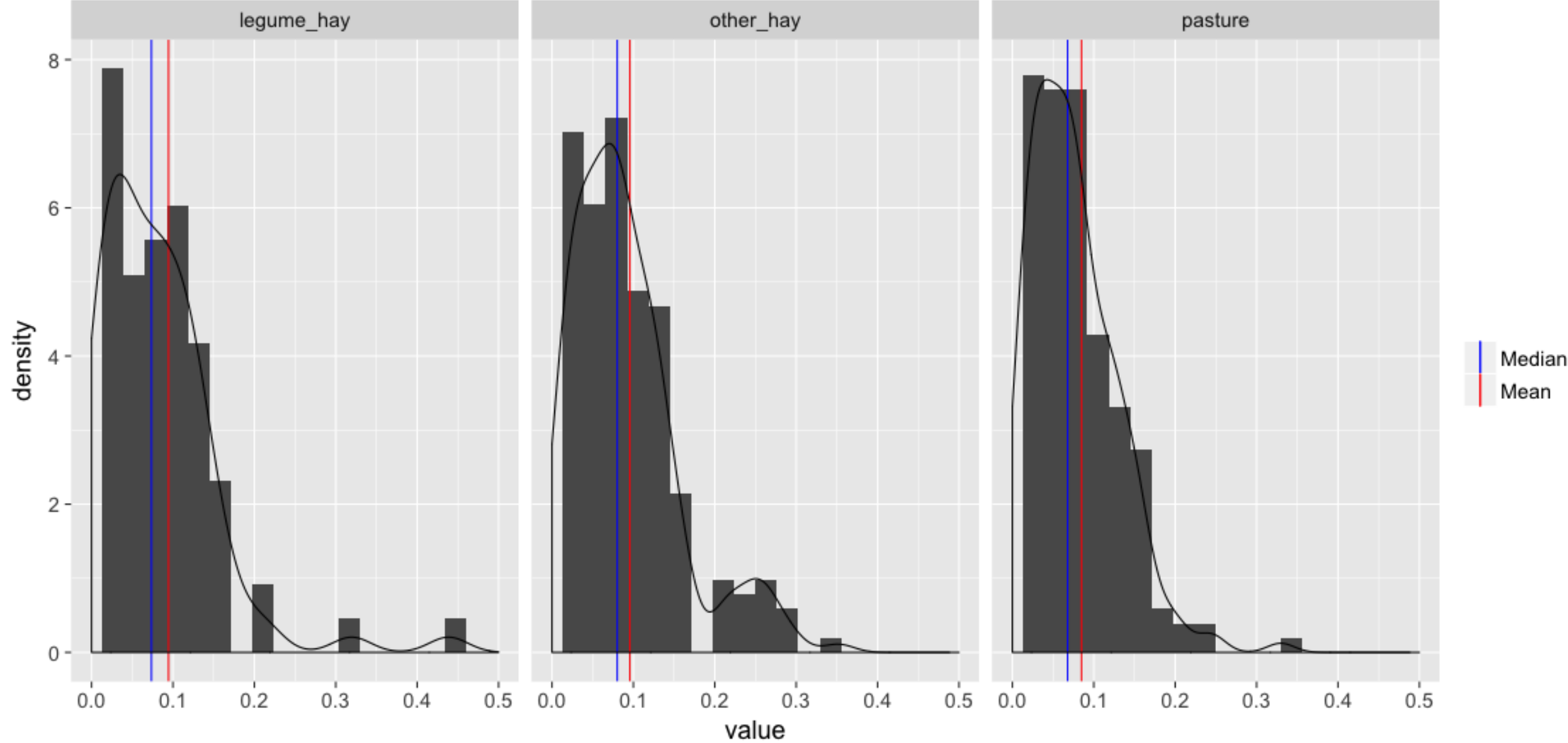
What's Happening: WEP % of applied manure can influence P loss without big changes to sediment P storage

Solution: Make WEP sensitivities

$$\text{WEP Sensitivity} = \frac{(\Delta \text{Ploss})}{\Delta(\text{WEP}\% * \text{ManurePapp})}$$

Units: lbs P loss per lbs WEP applied per year

Ib Ploss per Ib WEP applied per acre per year



lb Ploss per lb WEP applied per acre per year

