

# Ag Input Concerns

March 18, 2021

# CAST-21 Workplan (Working Draft)

*\*Approved data and method changes need to be finalized through the WQGIT by Sept. 1, 2021\**

Questions/  
Comments?

| KEY ACTION   | STATUS   |
|--|--|
| <b>Task 1:</b> Updates to data & methods that typically occur every 2 years.   | <ul style="list-style-type: none"> <li>On-going</li> <li>May AgWG update: on-going ag data collecting projects</li> </ul>  |
| <b>Task 2:</b> Investigate alternative forecasting methods for ag land uses & animals  | <ul style="list-style-type: none"> <li>Nov 19 AgWG: CBPO presentation on 4 methods of forecasting</li> <li>Feb AgWG; March 18 AgWG for decision</li> </ul>   |
| <b>Task 3:</b> Investigate 2012-2017 Ag Census change for fallow/idle acres  | <ul style="list-style-type: none"> <li>AgWG Sept 17; NASS consulted; no new information; No further action; See Jan AgWG decision</li> </ul>   |
| <b>Task 4:</b> Investigate use of latest landcover & LiDAR imagery to better define changes in total ag (& other land use) acres | <ul style="list-style-type: none"> <li>Oct AgWG; Jan AgWG; Feb AgWG; decision pending updated landcover &amp; LiDAR imagery for 14 prototype counties Apr AgWG</li> </ul>  |
| <b>Task 5:</b> Investigate alternatives for double-crop acre estimates   | <ul style="list-style-type: none"> <li>Oct 15 AgWG; NASS consulted- no new information; No further action; no recommended change to methodology; April for decision (associated with Task 4 change to ag acre calculations)</li> </ul> |
| <b>Task 6:</b> Consider supplemental NM for soybeans   | <ul style="list-style-type: none"> <li>In process</li> <li>Dec Ad Hoc; Jan Ad Hoc; Mar Ad Hoc; Apr-May AgWG</li> </ul>   |
| <b>Task 7:</b> QA/QC'd historic & current layer pop. data for Hillandale Farms (PA)  | <ul style="list-style-type: none"> <li>In process</li> <li>Feb Ad Hoc- general discussion; May AgWG</li> </ul>   |
| <b>Task 8:</b> Build-in Verification Ad Hoc Team products  | <ul style="list-style-type: none"> <li>In process</li> </ul>   |

**Reminder - CAST 21 Schedule:**

- Sept 1, 2021 - All data and methods approved
- Nov 1, 2021 - CAST-21 Beta release
- Jan 1, 2022 - Final CAST-21 release

# Next Step NM on Soybeans

## Task 7

(Further Deliberation March Ad Hoc)

**ACTION:** PA will work on gathering information to better understand what real-world soybean management looks like. Other jurisdictions are encouraged to do the same.

**ACTION:** Clarify with CBPO how the simulation of how N assumptions are handled in the model (e.g. reduction of N fixation in the model with applied N).

CBPO- NASS  
annual dairy  
surveys.

## Animal Data

Animal Populations: explore other estimating  
options (MD/NY; Task 1)

AgWG May  
Updates

## Crop Production/Acres

Crop Production Acres: improve annual estimates  
(MD; Task 1)

## Nutrient Applications/Assumptions

Fertilizer Sales and Use Data (MD; Task 1)

MD Working w/  
State Chemist.

## BMP Tracking & Reporting

Dairy Precision Feeding (PA)

Target Date June  
2021 for Report  
Back to the AgWG.

## BMP Effectiveness/Modeling

Winter Crop (NY/PA)

Manure Transport / Manure Treatment Technologies (PA)

Future  
Discussions with  
Modeling Team.

Forthcoming  
Discussions.

# Improving Ag Data? (TASK 1)

## Crop Acreage Data

Alternative methods to account for fitting Ag Census data to CBP needs?

- Adjusting methods for estimating crop acres (e.g. double crops)

Alternative/supplemental data sets

- Other data sets at the state or federal level?

Crop  
Application  
Goal

## Animal Population Data

Additional NASS Annual Survey Data may be available to inform population trends between census years (incorporated every two years)

- Dairy, Beef Cattle, Layers, Swine...

Direct from industry data can inform animal population trends between census years.

- Requires careful cooperation
- Legal, privacy assurances

Manure Generated

## Other Data Issues (new data incorporation every 2 years)

Soil P data

- Gary Shenk Sept 2018 presentation to AgWG on data set incorporated into the CBWM
- **Additional soil P data is welcome and encouraged (NY & WV have made inquiries)**

Manure Nutrient Concentration Data

- Changes in management may result in changes in nutrient concentrations
- **Additional manure concentration data is welcome and encouraged**

Fertilizer Data

- More accurate allocation of fertilizer within the CBW?
  - **Jurisdictions working with state chemists**

4. Define Inorganic Fertilizer  
Available to Crops

### CRITICAL CONCEPT:

To maintain integrity of CBWM there are two options for new data sets:

- Provide data all the way back through 1985.  
OR
- Use the trend in new data sets for the years available.

CBWM= Chesapeake Bay Watershed Model

# Prioritizing Concerns (post CAST-21)

- AgWG Home Page

[https://www.chesapeakebay.net/who/group/agriculture\\_workgroup](https://www.chesapeakebay.net/who/group/agriculture_workgroup)

## Projects and Resources

### Agriculture Workgroup Chesapeake Assessment Scenario Tool (CAST) Issues Tracker

The below Chesapeake Assessment Scenario Tool (CAST) Issues Tracker records concerns that have been raised by jurisdictions in relation to agricultural data inputs. The tracker is a living document and will be updated regularly as progress is made on the issues or new issues are raised.

CAST Issues Tracker Oct 2021 (15.21 KB)

### Agriculture Workgroup Governance Protocol & Membership

Governance Protocol (Approved 3/15/18) (49.57 KB)

AgWG 36+ Large Membership, Feb. 2021 (83.47 KB)

AgWG Signature Membership, Nov 2021 (35.1 KB)





|    |  |   |   |                      |  |
|----|--|---|---|----------------------|--|
| IG |  | X | ✓ | <i>f<sub>s</sub></i> | Revisit in March 2021 in CAST Ad Hoc to clarify ask and resources needed |
|----|--|---|---|----------------------|--|



- March 22 WQGIT
  - Update on CAST-21 Progress
- March Ad Hoc:
  - Discussion NM on Soybeans
  - Clarification “Winter Crop” BMP Ask (time permitting)
- April AgWG
  - Decision Landcover/ LiDAR Data (Task 4)
  - Decision Double Crop Methods (Task 5)
  - Detailed update NM on Soybeans (Task 6)
- May AgWG
  - NM on Soybeans (Task 6)
  - Hillandale Data (Task 7)
- June
  - Update from Dairy Precision Feeding Group





# What is Driving N Load Concerns?

No consensus in Ad Hoc yet...

Agricultural Loading Rates?

Ag Census (i.e., Source Of Crop Data) ?

NM BMP Recommendations?

- Changing an Approved Expert Panel Recommendation Must Follow Science (BMP Protocol)
- Protocol for the Development, Review, and Approval of Loading and Effectiveness Estimates for Nutrient and Sediment Controls in the Chesapeake Bay Watershed Model

# Agricultural Loading Rates

Based on Available Literature &  
Best Professional Judgement

“N losses from soybeans are only somewhat lower than corn, because N fixation inputs (which are poorly characterized) are apparently substituting for fertilizer inputs.” (p.11 )

# Census of Agriculture

Concern Regarding  
Accuracy of Ag Census  
Crop Acres

Spatially Distributed Land Use  
from the Land Cover/Land Use  
Data Team Starting With the  
CAST-21 Could Mitigate Concern

Method of Modeling  
Double-Crop Soybeans  
Approved by CBP Partnership

Determined Sound by USDA-NASS

CAST-21 Workplan  
TASK 3

# NM Expert Panel Recommendations

Land Use:  
Full-Season Soybeans

On Soybeans NM Controls for P (*not N*)

Land Grant Universities Do Not Recommend N Application (Via Fertilizer or Manure)

“Core” NM BMP ☐ **N & P**

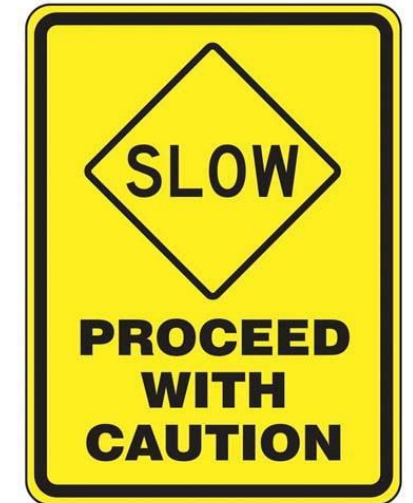
- Applies to Crop Application Goal (What is Applied to Crop)

Supplemental NM BMPs ☐ **P only**

## General Thinking

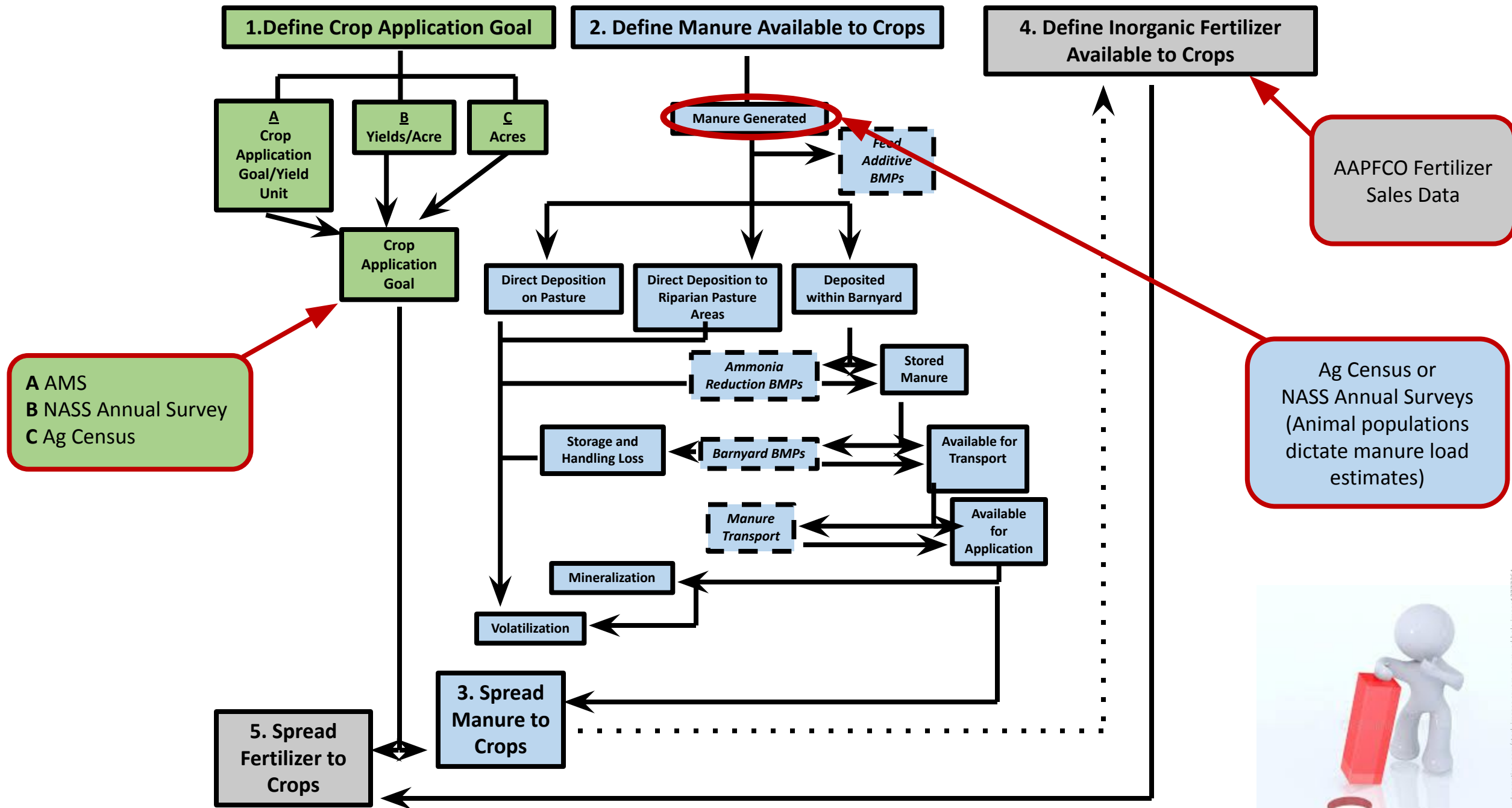
- Timing & Placement of Excess N Irrelevant (Still Subject to Loss)
- Rate? Excess N Reduced *is Still Excess N* Subject to Loss...
- Fraction of Applied N Tiny Compared to Residual N From Fixation
- Applies to Total Soybean Load
  - Total Load is Primarily Residual N From Fixation

| BMP Concern   | CBP BMP Effectiveness Source   | Next Steps  |
|---|--|---|
| Dairy Precision Feeding (PA)                          | Definitions and reductions approved by the WQGIT in <b>2009</b>  | PA Action Team  |
| Rotational/Prescribed Grazing (PA)                    | Definitions and benefits were reviewed and approved by the Agriculture Workgroup and WQGIT in <b>2010</b>  | RESOLVED  |
| Heavy Use Area Protection-NRCS 561 (PA)               | Loafing Lot Management definitions and reductions approved by the Chesapeake Bay Program's Nutrient Subcommittee in <b>2003</b> .  | RESOLVED  |
| Nutrient Management on Pasture (NY/PA)                | Nutrient Management Practices for use in the Phase 6.0 Chesapeake Bay Program Watershed Model ( <b>2016</b> )  | RESOLVED  |
| Commodity Cover Crops (NY/PA)                         | Cover Crops Practices for use in Phase 6 of the Chesapeake Bay Watershed Model ( <b>2016</b> )   | EP Chair discussion with AgWG (Dec 2020)<br>Charlie White, Penn State @ AgWG Jan 2021 |
| Manure Transport / Manure Treatment Technologies (PA) | <ul style="list-style-type: none"> <li><i>Manure Treatment Technologies</i>: Recommendations from the Manure Treatment Technologies Expert Panel to the CBP's WQGIT to define Manure Treatment Technologies as a Best Management Practice (<b>2016</b>)</li> <li><i>Manure Transport</i>: definition and benefits have remained in use <b>since review and approval by the CBP partnership's source sector workgroups for tributary strategy development.</b></li> </ul> | Work with MWG   |



Protocol for the Development, Review, and Approval of Loading and Effectiveness Estimates for Nutrient and Sediment Controls in the Chesapeake Bay Watershed Model





## Source for *distribution* of statewide populations can change.

Example: Pennsylvania provides fraction of cattle in every county for the year 2019, and these fractions are used to distribute TOTAL statewide cattle populations from the Census of Agriculture.

