

Objective 1 Land Use Modeling Updates



October 15, 2020: Agriculture Workgroup

Jacob Czawlytko

jczawlytko@chesapeakeconservancy.org

Agriculture input data

- Intermediate image segments
- CDL 2017, 2018, and 2019 combined
 - Simplified to Crop, Pasture, Fallow/Idle, Orchard/Vineyard(“tree crop”)
- CDL 2017 (simplified)
- NLCD 2016: Pasture
 - Simplified to Pasture or Non-Pasture
- Local Land Use or Zoning
- Parcels

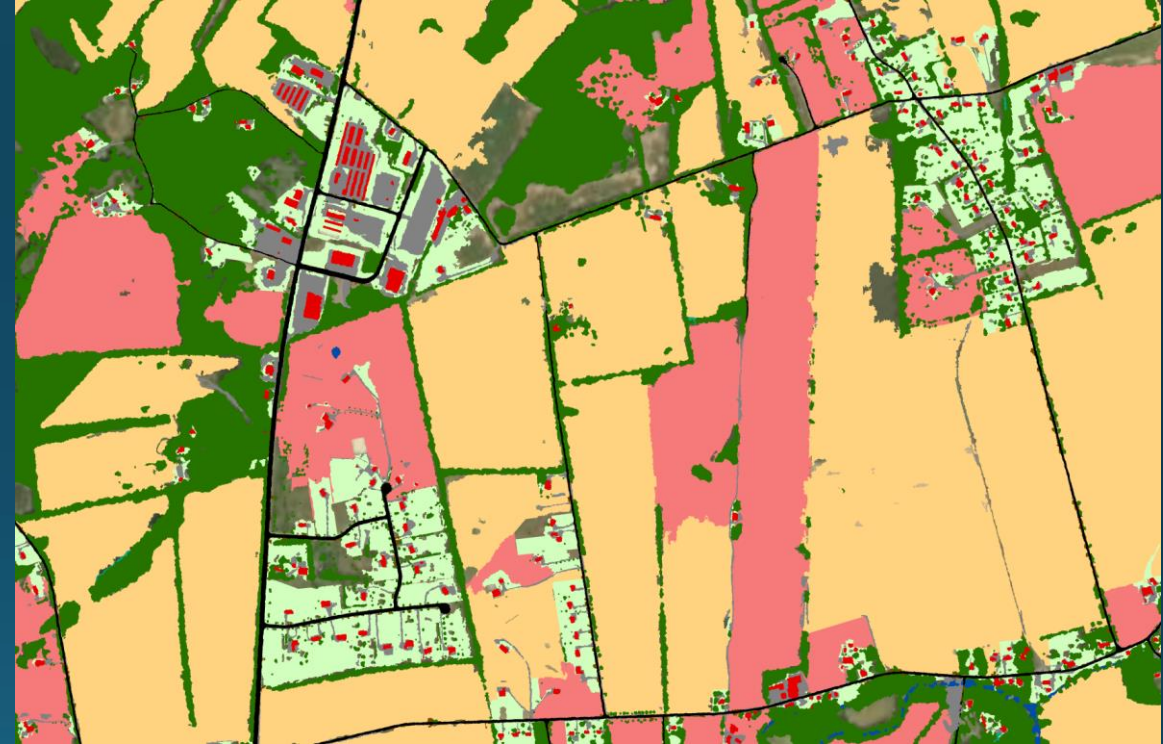
What are “segments”?

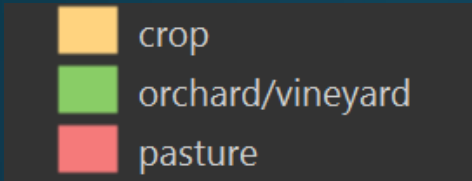
- Shapes derived from imagery
- Group of similar pixels
- Intermediate data product
- To avoid “artificial” borders
- Help identify land uses

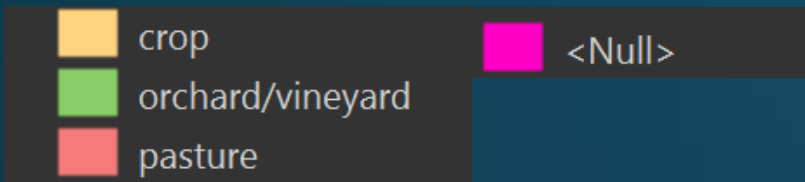


Refining Rules

- Leaning towards high confidence and omission while testing
- Tracking every step
- Order of rules/decisions is key
- Reliance on local and ancillary data
- General logic is set
- Thresholds/limits

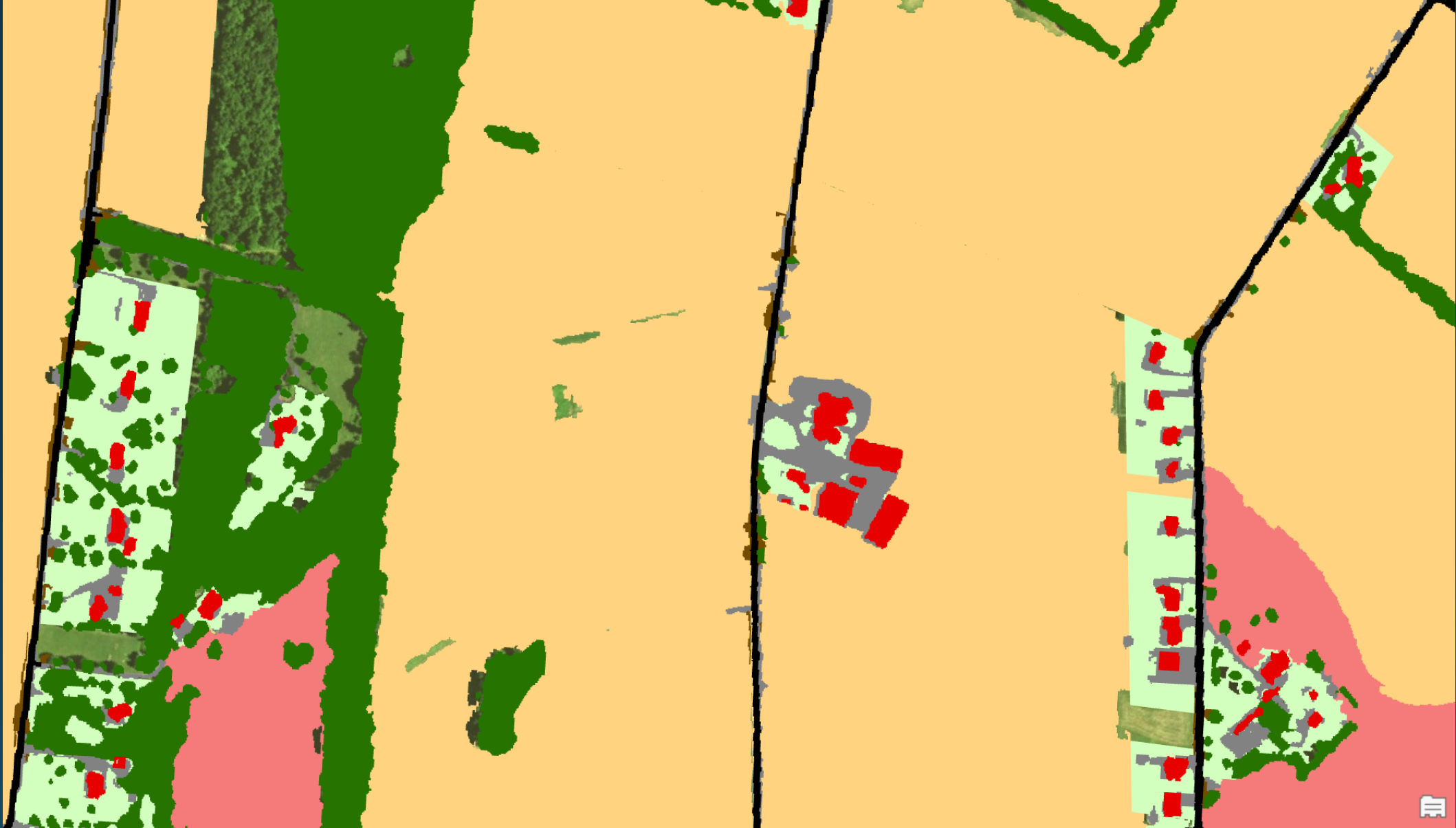






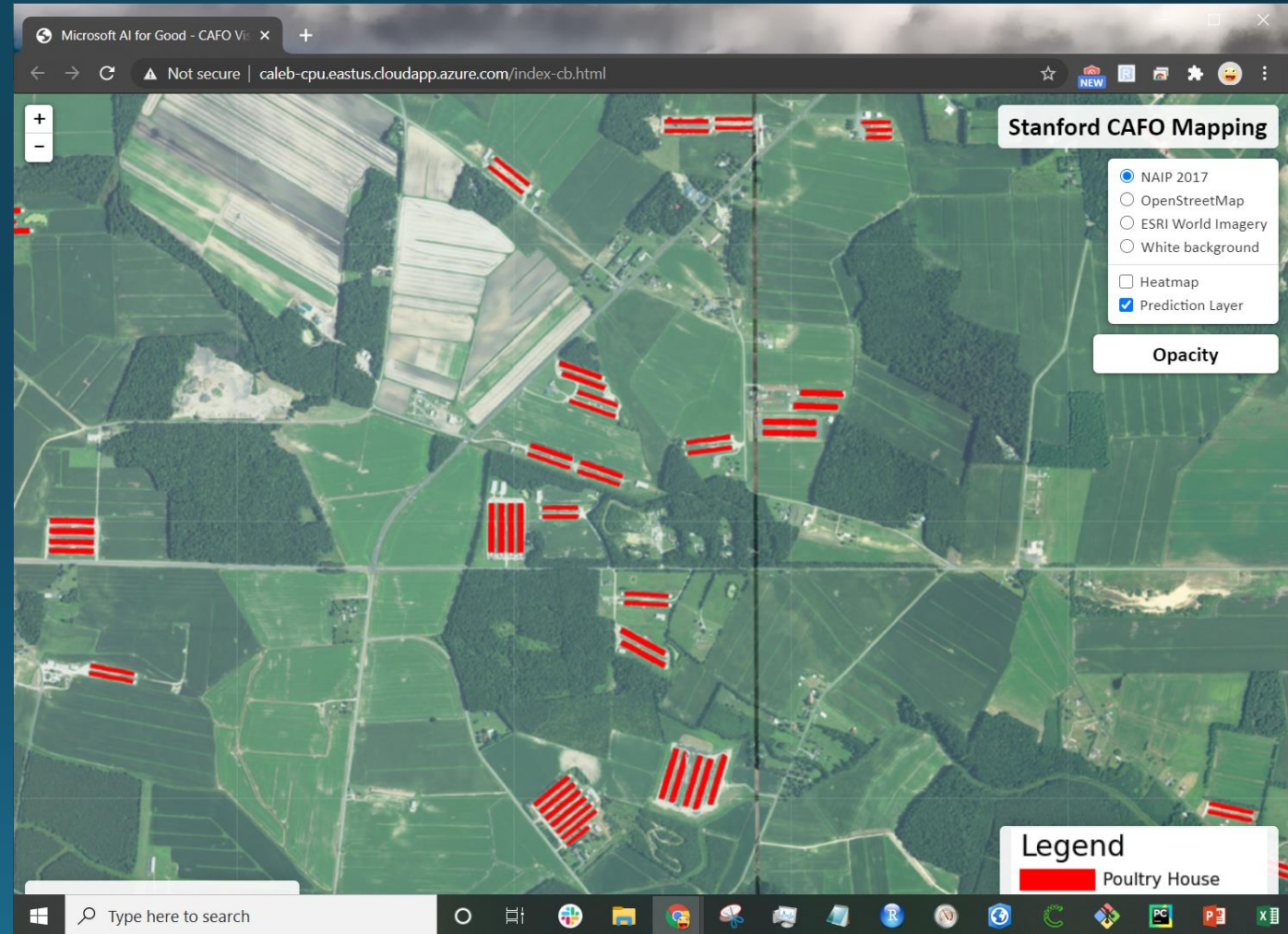






Automated Chicken House Detection

- Caleb Robinson - Microsoft AI for Good
- [Link to Web App](#)
- Current status
 - Identifies chicken houses in MD, DE and PA
 - Few results in NY
 - Commission errors on roads and urban areas to be fixed with post-processing



Upcoming

- Full county coverage
- Document of draft rules
- Inclusion of chicken houses
- 14 Test Counties

Questions?

jczawlytko@chesapeakeconservancy.org