

Q3. Which land uses can receive nutrient and sediment reductions for each cover crop practice type?

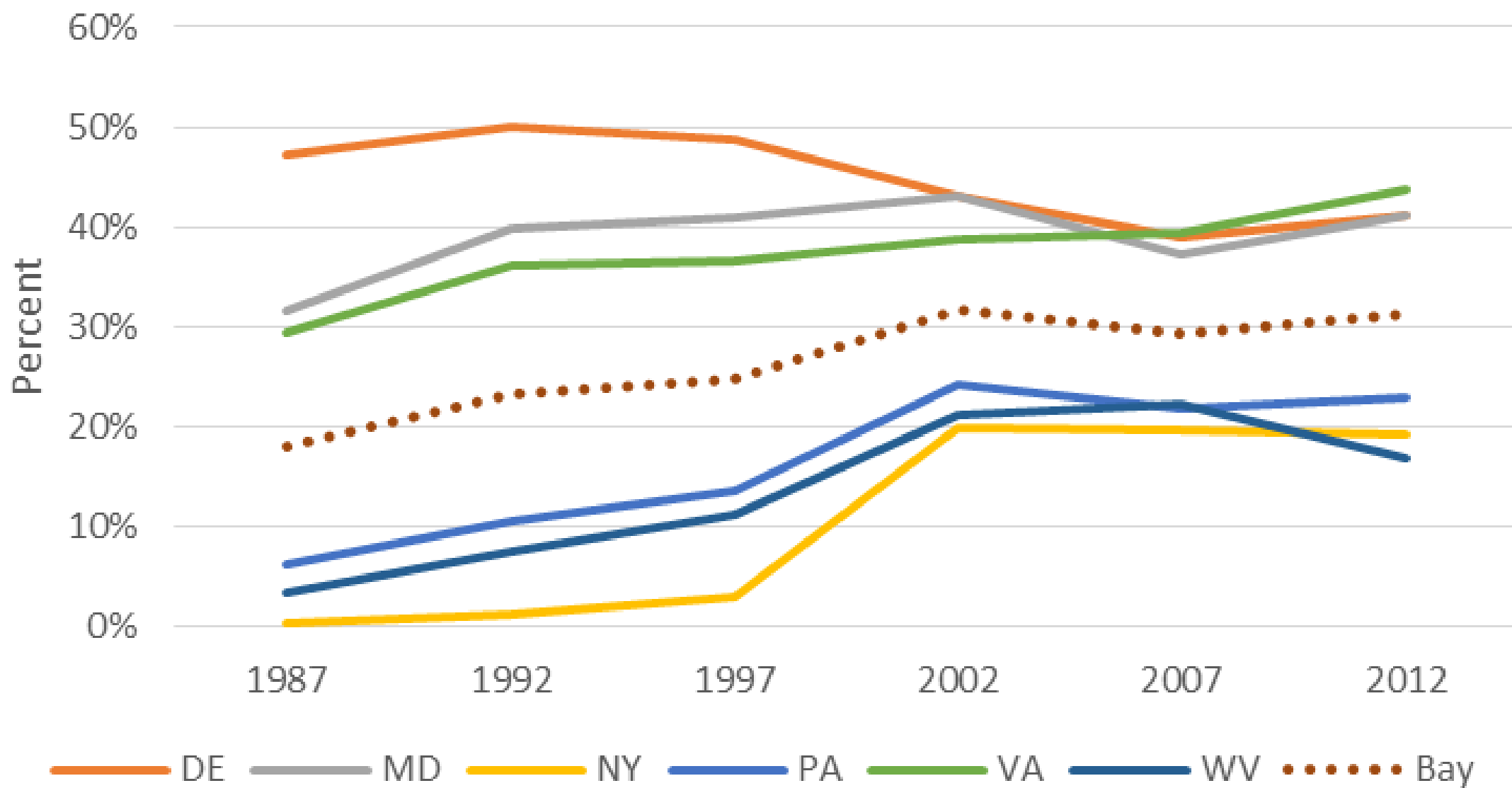
- A3. Traditional Cover Crops and Traditional Cover Crops with Fall Nutrient Applications may be submitted upon any of the following row crop land uses:
 - Silage with Manure
 - Silage without Manure
 - Specialty Crop High
 - Specialty Crop Low
 - Other Agronomic Crops
 - **Full Season Soybeans**
 - Grain with Manure
 - Grain without Manure
 - Small Grains
 - **Double-Cropped**
 - Specialty Crop Low
- Commodity Cover Crops represent winter cereal production and thus, may only be applied to the Small Grains and the Double Cropped land uses.
- [http://www.chesapeakebay.net/documents/Phase 6 CC EP Final Report 12-16-2016-NEW TEMPLATE FINAL.pdf](http://www.chesapeakebay.net/documents/Phase%206%20CC%20EP%20Final%20Report%2012-16-2016-NEW%20TEMPLATE%20FINAL.pdf).

Maryland's 2017-2018 Cover Crop Program

- **GUIDELINES AND CONDITIONS**

- Plant cover crops after corn, **soybeans**, sorghum, tobacco or vegetables.
- http://mda.maryland.gov/resource_conservation/Pages/cover_crop.aspx

Percent Soy and DC Acres out of Total Crop Acres



MD Crops vs. 2016 Progress Cover Crop Implementation

