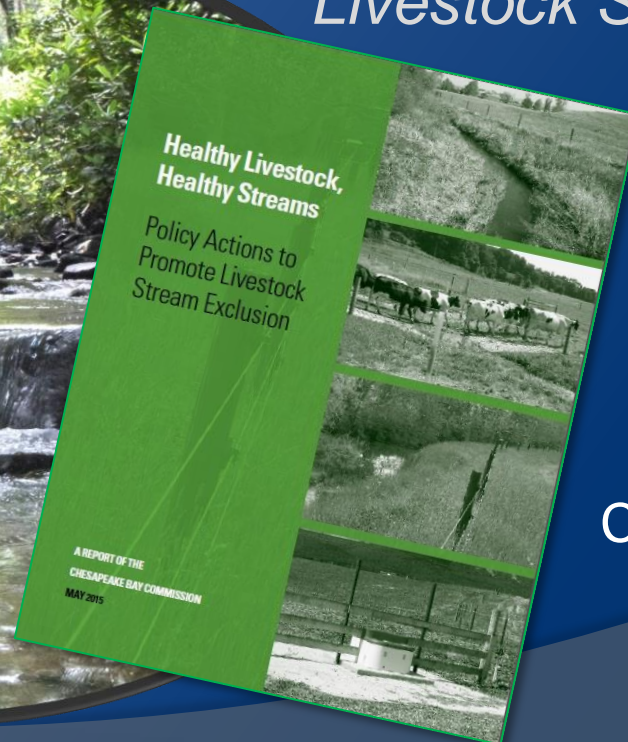




Healthy Livestock, Healthy Streams

*Policy Actions to Promote
Livestock Stream Exclusion*



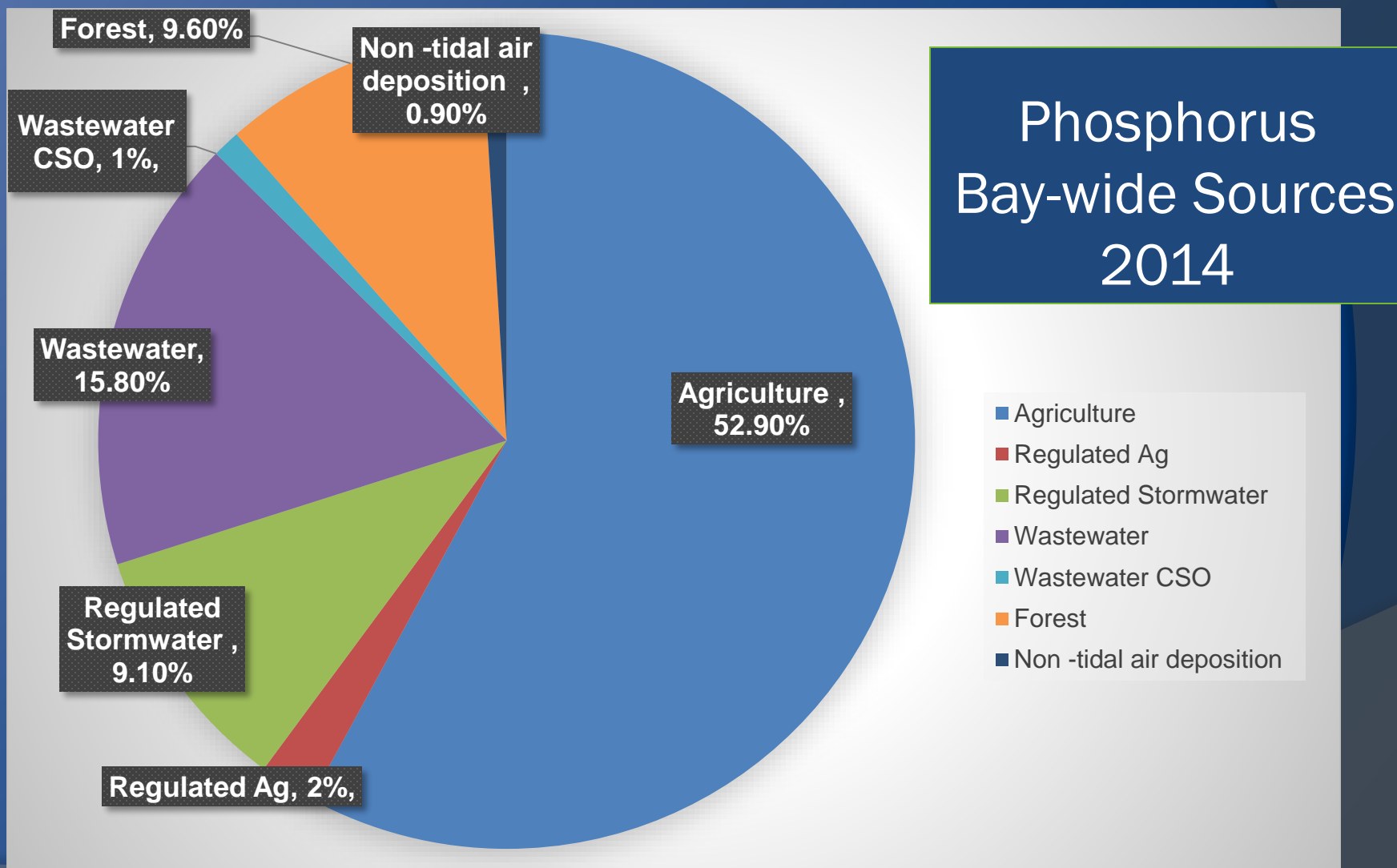
Chesapeake Bay Program
Agricultural Workgroup
June 17, 2015

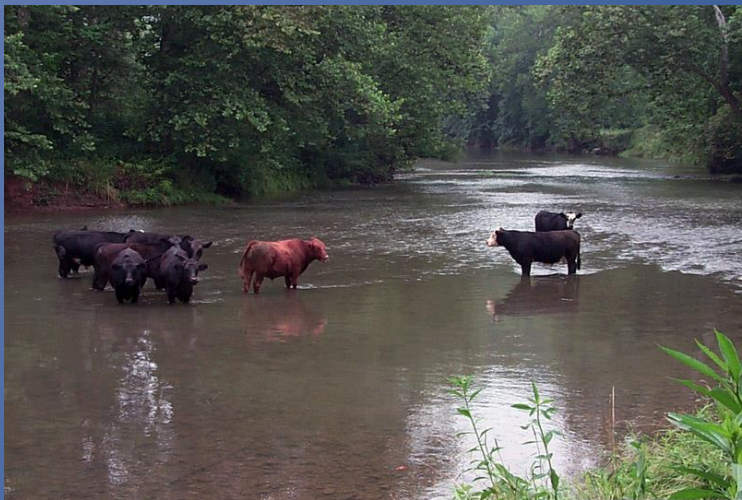
Major CBC Policy Publications

- Oil Spill Policy (1989)
- Environmental Education (1990)
- Genetic Analysis of Shad (1991)
- Rec. Boat Pollution (1991)
- Ballast Water (1995)
- Abandoned and Derelict Boats (1999)
- Forests for the Bay (2000)
- Land Preservation (2001, 2010)
- Cost of a Clean Bay (2003)
- Cost-Effective Strategies (2004)
- Blue Crab (2002,2003,2004,2005)
- Farm Bills (2002, 2008, 2014)
- Congressional Agenda (2008)
- Biofuels (2007, 2008, 2010)
- Manure to Energy (2012)
- Nutrient Credit Trading (2012)
- Crediting Land Conservation (2013)
- Livestock Stream Exclusion (2015)



Bay TMDL- a Shared Responsibility





**What's the
problem?...**



Risk Posed by Water

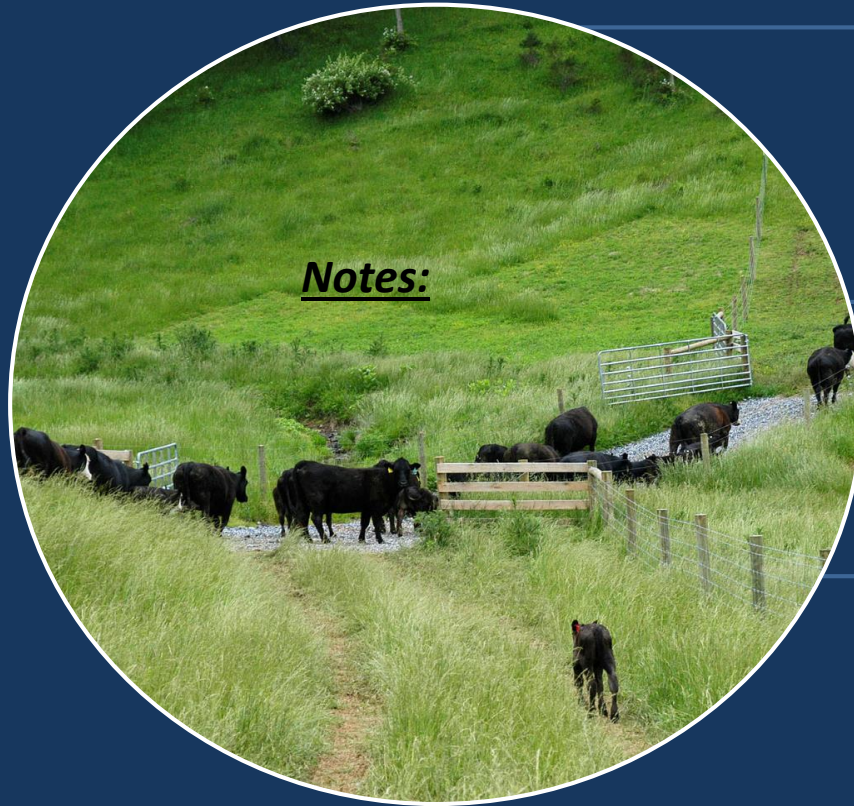
PONDS – MUDHOLES - POTHOLE

- Standing water concentrates exposure
- Increases spread of diseases within a herd
- Exposes cattle to colonization of bacteria

FLOWING WATER - STREAMS

- Possibly dilutes exposure
- Compromises farm biosecurity
- Increases exposure to deliberate contamination

What is Livestock Exclusion...



Fence



Water



Riparian
Buffer



Virginia TMDL Story

Of 280 bacterial TMDLs completed in localities with cattle populations considered production agriculture, **83% or 232** of the TMDLs require a reduction in the bacteria loadings from cattle accessing streams.

Virginia TMDL Story

Of 280 bacterial TMDLs completed in localities with cattle populations considered production agriculture, **83% or 232** of the TMDLs require a reduction in the bacteria loadings from cattle accessing streams.

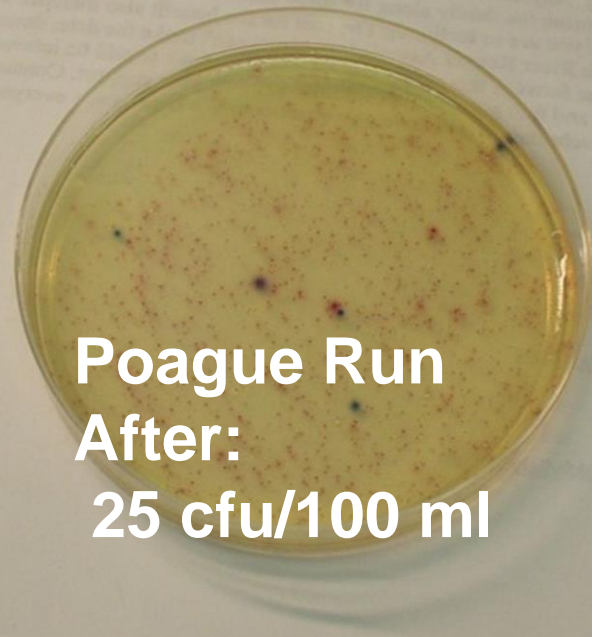


Virginia TMDL Story

Of 280 bacterial TMDLs completed in



**Poague Run
Before:
3,850 cfu/100 ml**



**Poague Run
After:
25 cfu/100 ml**

Aquatic Health



INSTAR (VA)

INteractive **ST**ream Assessment Resource

MBSS (MD)

Maryland **B**iological **S**tream **S**urvey

MAIS (PA)

Macroinvertebrate **A**ggregated **I**ndex for **S**treams





***Why are some
producers hesitant?***

Agriculture Sector Reductions contributed by WIP Livestock Exclusion Practices

	Nitrogen	Phosphorus	Sediment
Pennsylvania	3%	14%	20%
Maryland	2%	18%	9%
Virginia	4%	14%	24%

	Nitrogen	Phosphorus	Sediment
Stream Access Control with Fencing (grass buffer)	13-46%	30-45%	40-60%
Alternative Watering Facility	5%	8%	10%

Agriculture Sector Reductions contributed by WIP Livestock Exclusion Practices

	Nitrogen	Phosphorus	Sediment
Pennsylvania	3%		
Maryland	2%		9%
Virginia		14%	24%

Fencing = Assurance

	Nitrogen	Phosphorus	Sediment
Stream Access Control with Fencing (grass buffer)	13-46%	30-45%	40-60%
Alternative Watering Facility	5%	8%	10%

Leading Federal Programs

Regulatory

- EPA-Clean Water Act CAFO Program
- EPA-Clean Water Act TMDL Program



Incentive

- USDA, FSA/NRCS
Conservation Reserve Enhancement Program
- USDA, NRCS
Environmental Quality Incentives Program
Regional Conservation Partnership Program



State	Mandates	Results
Maryland	Agricultural Nutrient Management Program	\$2,500 & ≥ 8 cattle; no fence required
	Critical Area Act	No fence required; min. 25' ungrazed buffer
Pennsylvania	Clean Streams Law	Forbids requiring pasture exclusion fence
	Manure Management Manual	Confinement area exclusion
Virginia	Concentrated Animal Feeding Operations	Only large operation confinement areas
	Agricultural Stewardship Act	Complaint driven

	State Ag BMP Incentives			
State	CREP	State Cost-Share	Tax Credits	Low Interest Loans
Maryland	✓	✓		✓
Pennsylvania	✓	✓	✓	✓
Virginia	✓	✓	✓	✓

	State Policy Opportunities			
State	CREP* acres	State Cost- Share	Tax Credits	Low Interest Loans
Maryland	66,000 of 100,000	Favor exclusion fencing	Create tax credit program	
Pennsylvania	138,000 of 220,000	Dedicated funding & favor exclusion		Facilitate aggregation and favor exclusion
Virginia	21,000 of 25,000	Fund 100% backlog		

(*EQIP and CREP can provide flexibility & adapt to needs)

Recommended Actions

State-level working group:

1. Match incentive program to needs
2. Increase resources for incentive programs
3. Explore conservation compliance concepts
4. Address absentee landlord/tenant farmer issues
5. Repeal, modify stream fencing policies
6. Keep it simple

Recent Activity

Maryland

- Meeting with MDA and stakeholders in August

Pennsylvania

- Lancaster CD re-booting “Fence ‘Em Out”

Virginia

- Lowered cost-share rate and re-set cap
- Consider funding to address backlog

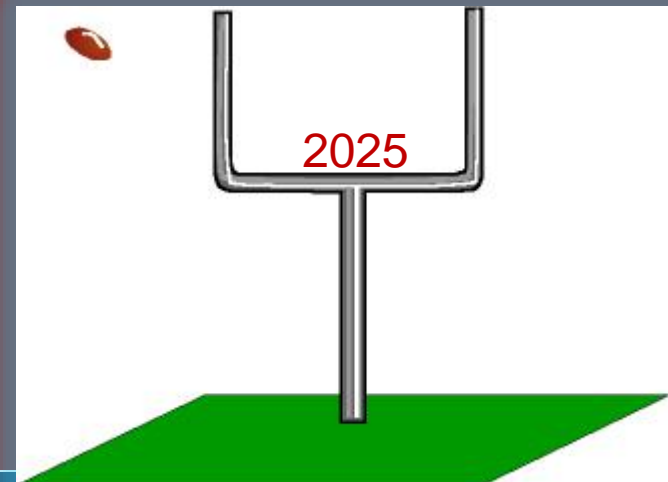
Next Steps: Bay Program & Federal

Coordinate with NRCS & FSA on incentives

Fix Bay Program reporting & crediting by 2017

Clarify WIP reliance on federal programs

2019 Farm Bill needs justification package



Our Tradition



Our Future



Healthy Livestock, Healthy Streams

*Livestock do
not belong in
streams*

