



Chesapeake Bay Program
Science. Restoration. Partnership.

Agriculture Workgroup

April 2024

Agenda

1 Water Quality Trends in Showcase Watersheds

2 PA Remote Sensing Update

3 2022 Census of Ag

4 New Business, Announcements, and Updates

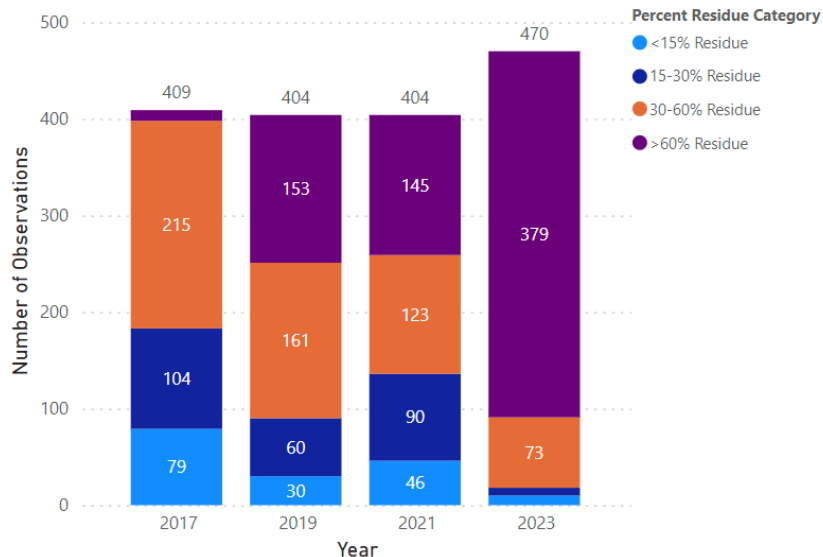
Water Quality Trends in Showcase Watersheds

WQ Trends in Showcase Watersheds

- Informational item
 - Water quality monitoring is of interest to several AgWG members
 - Presentation given at WQGIT; relevant to have here, too
- What do the data tell us?
- Awareness of ongoing and new monitoring efforts in the watershed, particularly in small ag watersheds

PA Remote Sensing Update

Conservation Tillage BMP Implementation



County Name

Blair County

Percent Residue Category

Multiple selections

Year

All

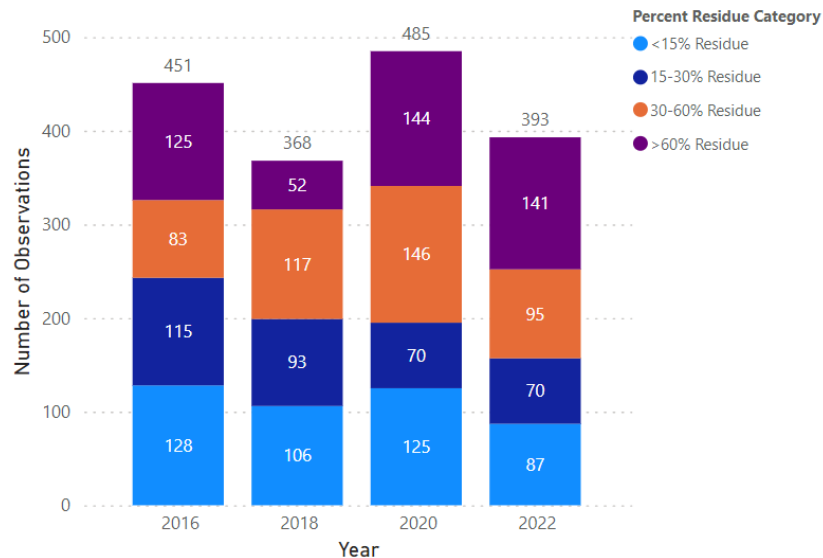
Conservation Tillage Survey Results (Number of Observations)

Year	<15% Residue	15-30% Residue	30-60% Residue	>60% Residue	Total
2017	79	104	215	11	409
2019	30	60	161	153	404
2021	46	90	123	145	404
2023	10	8	73	379	470
Total	165	262	572	688	1687

Conservation Tillage Survey Results (Percent of Survey)

Year	<15% Residue	15-30% Residue	30-60% Residue	>60% Residue	Total
2017	19.32%	25.43%	52.57%	2.69%	100.00%
2019	7.43%	14.85%	39.85%	37.87%	100.00%
2021	11.39%	22.28%	30.45%	35.89%	100.00%
2023	2.13%	1.70%	15.53%	80.64%	100.00%
Total	9.78%	15.53%	33.91%	40.78%	100.00%

Conservation Tillage BMP Implementation



County Name

Lancaster County

Percent Residue Category

Multiple selections

Year

All

Conservation Tillage Survey Results (Number of Observations)

Year	<15% Residue	15-30% Residue	30-60% Residue	>60% Residue	Total
2016	128	115	83	125	451
2018	106	93	117	52	368
2020	125	70	146	144	485
2022	87	70	95	141	393
Total	446	348	441	462	1697

Conservation Tillage Survey Results (Percent of Survey)

Year	<15% Residue	15-30% Residue	30-60% Residue	>60% Residue	Total
2016	28.38%	25.50%	18.40%	27.72%	100.00%
2018	28.80%	25.27%	31.79%	14.13%	100.00%
2020	25.77%	14.43%	30.10%	29.69%	100.00%
2022	22.14%	17.81%	24.17%	35.88%	100.00%
Total	26.28%	20.51%	25.99%	27.22%	100.00%

2022 Census of Ag

Census of Ag

- Conducted once every 5 years
- “Only source of uniform, comprehensive, and impartial agriculture data” for each state, county in the country
 - Land use/ownership
 - Producer characteristics
 - Production practices
 - Income and expenditures
- Valuable to users across sectors, from producers to policy makers
- Valuable to the Bay Program

Census of Ag

- 2022 Census of Agriculture released in February
 - What do the numbers tell us?
 - What trends do we see?
 - State-specific numbers
- Other NASS products
 - Watershed Summary – July 24th

New Business, Announcements & Updates



AMT Updates – Tom Butler



Crediting Agroforestry Practices

- March AgWG meeting: presentation from Ruth Cassilly, Katie Brownson on implementation of agroforestry practices
- CBPO meetings to determine what process looks like
- Steps:
 - Discuss with AgWG, FWG, Chesapeake Agroforestry Network
 - Solicit information/research, names of experts
 - May-June: draft scope of work of expert panel establishment group (EPEG) for WG endorsement; decision item when members have been identified
- EPEG report-out to AgWG (AgWG meeting time not spent in the weeds)

Anything else?

- Send to Eric Hughes (Hughes.Eric@epa.gov) for inclusion in “Recap” email

Thank you!

Any questions?

You can contact me at Hughes.Eric@epa.gov



Chesapeake Bay Program

Science. Restoration. Partnership.