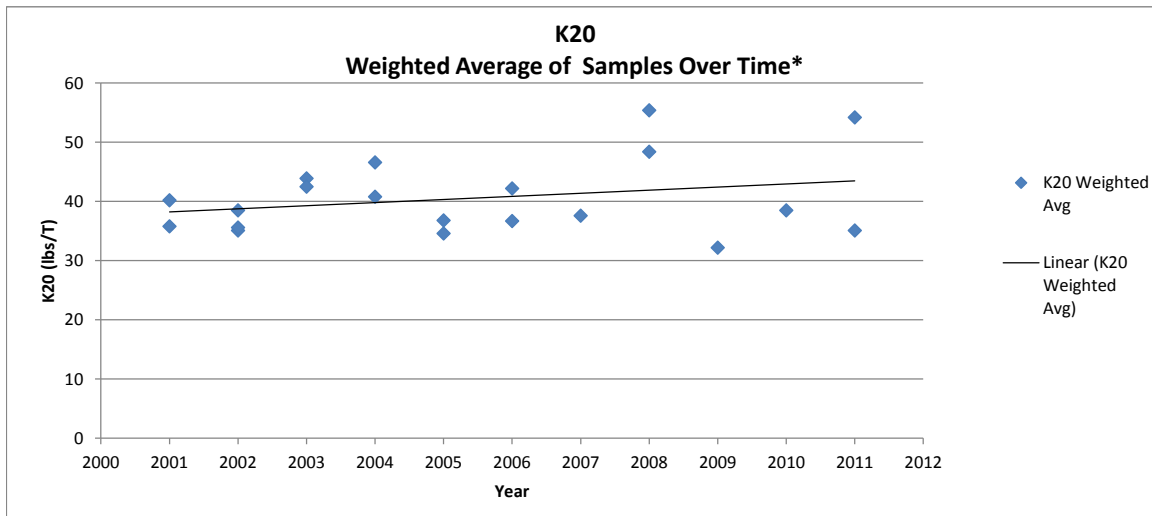
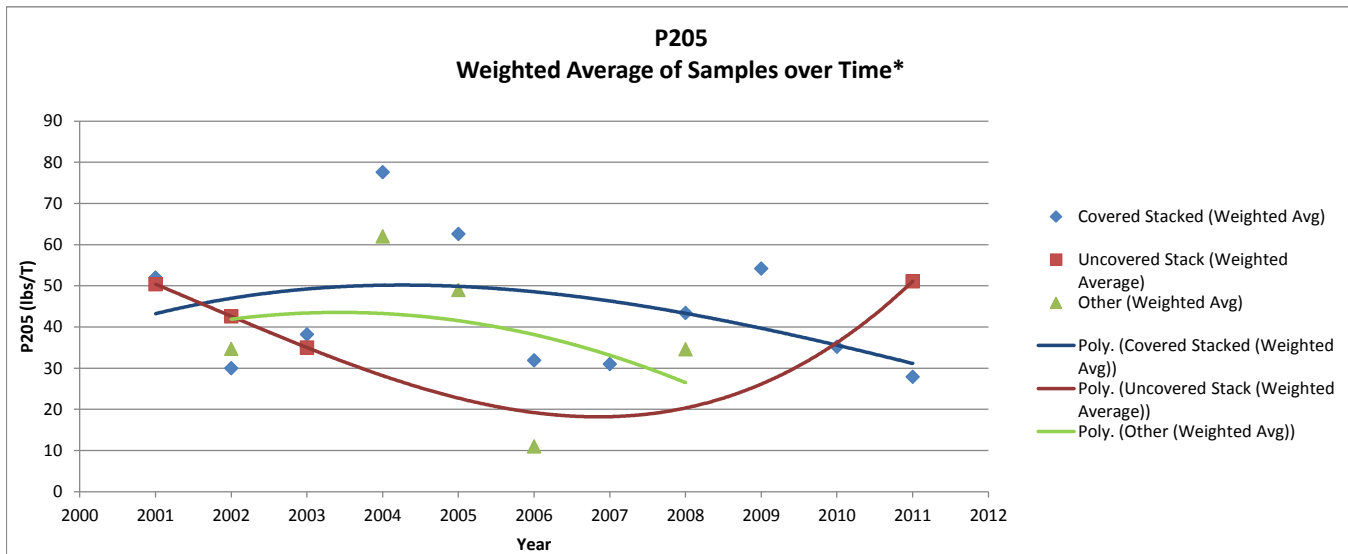
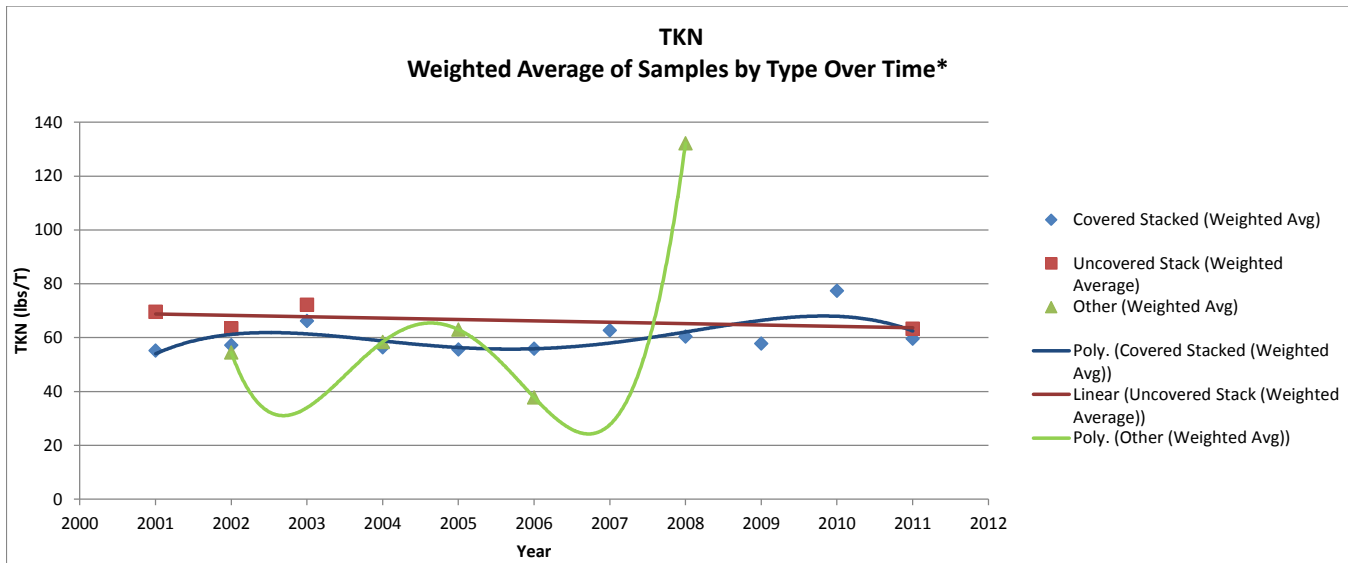


Breeder (turkey)

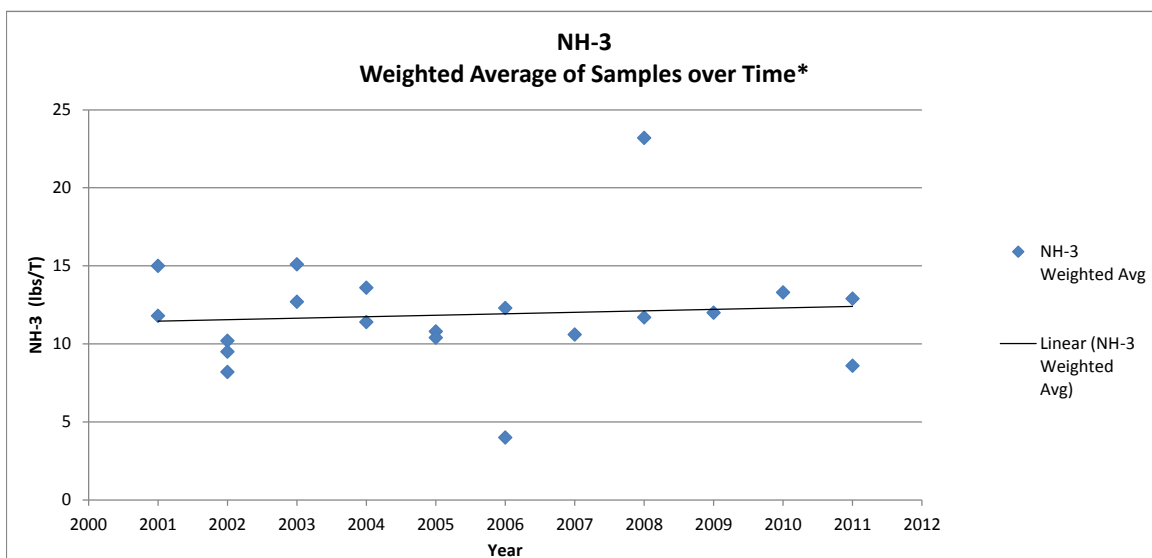
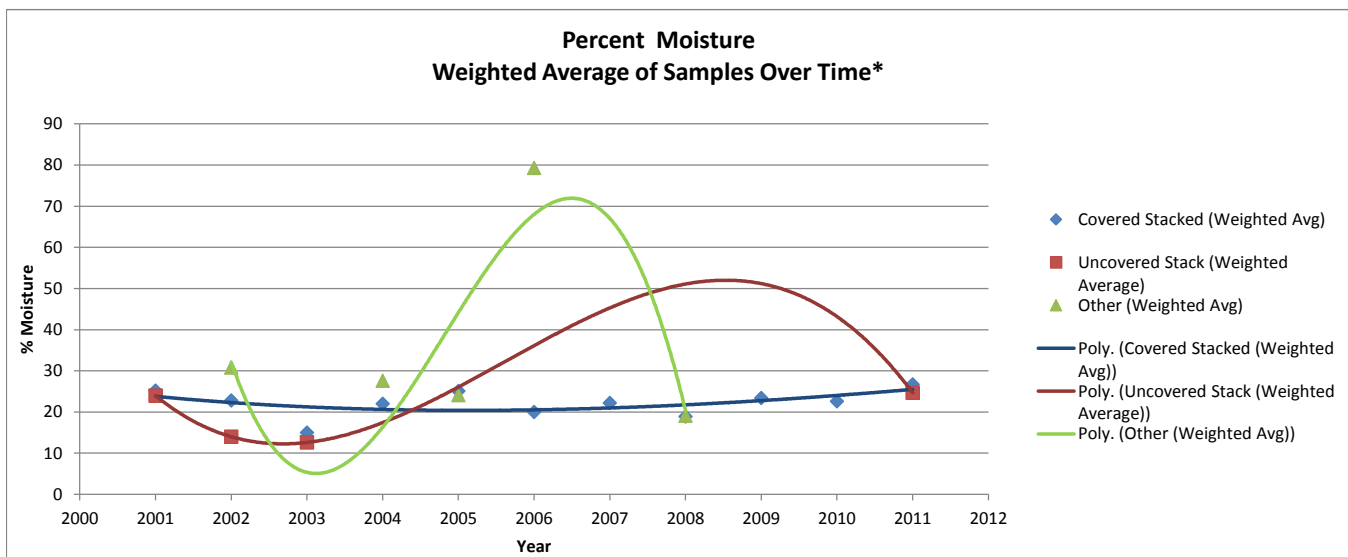
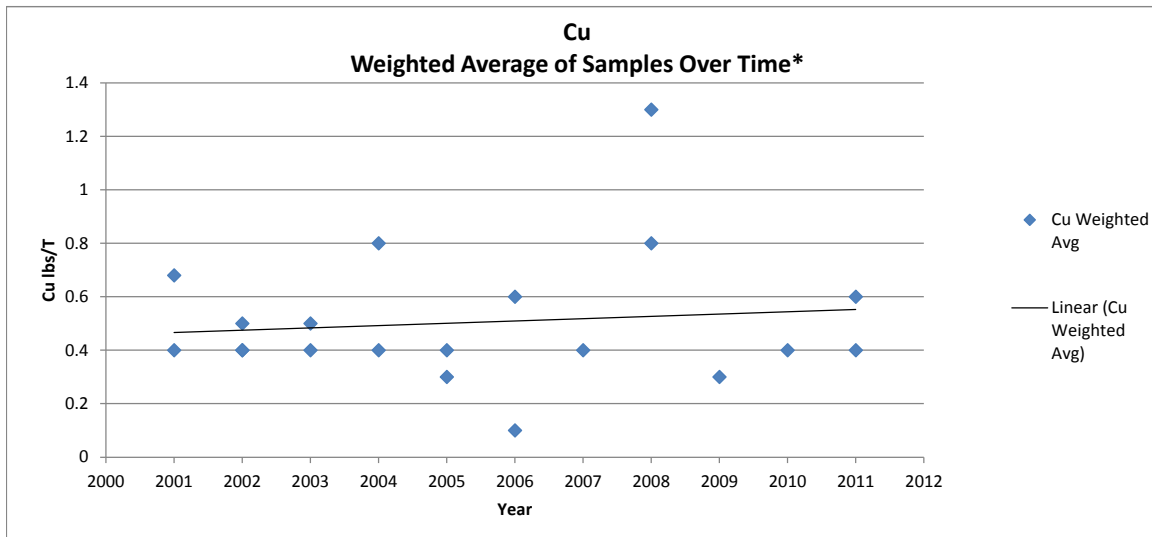
2012 Poultry Litter Subcommittee Breeder State Data Request

State Agency Lab	Virginia Dept. of Conservation and Recreation Clemson																			
Year																				
(1985-Present)	2001	2001	2002	2002	2002	2003	2003	2004	2004	2005	2005	2006	2006	2007	2008	2008	2009	2010	2011	2011
Manure Type																				
Dry	x	x	x	x	x	x	x	x	x	x	x	x	x	x	x	x	x	x	x	x
Wet																				
Sample Type																				
In-House																				
Uncovered Stack		x		x			x													x
Covered Stack	x		x			x		x		x		x		x	x		x	x	x	
Roofed Storage																				
Other (specify)					x				x		x		x			x				
Sample Number																				
(1-10,000)	11	1	10	5	3	25	4	7	4	14	2	3	1	9	6	1	11	16	15	2
TKN lbs/T																				
Value Range	24.2-83.8	69.6	19.0-80.2	29.8-87.8	37.4-64.6	29.0-99.8	34.8-100.2	36.8-82.0	44.4-70.4	42.6-71.4	50.8-75.2	53.0-58.2	37.8	45.4-86.2	37.6-72.8	132.2	36.8-86.2	42.4-119.8	36.6-90.8	61.4-65.2
Weighted Average	55.2	69.6	57.2	63.4	54.5	66.2	72.2	56.4	58.4	55.6	63	55.9	37.8	62.7	60.4	132.2	57.8	77.4	59.6	63.3
P205 lbs/T																				
Value Range	19.4-87.2	50.4	10.6-47.6	13.6-58.2	19.2-54.8	9.8-53.6	23.8-45.8	48.6-107.8	47.2-74.8	21.8-78.8	40.8-57.2	25.8-42.8	11	17.8-51.8	24.4-74.6	34.6	26.6-76.0	24.0-49.6	12.0-56.4	39.8-62.4
Weighted Average	52	50.4	30	42.6	34.7	38.2	35	77.6	62	62.6	49	31.9	11	31	43.4	34.6	54.2	35.2	27.9	51.1
K20 lbs/T																				
Value Range	19.6-49.8	40.2	13.8-65.6	21.6-51.4	26.0-59.0	15.6-60.6	26.4-65.2	23.6-59.8	27.8-58.2	20.0-46.4	29.0-44.8	29.0-41.2	42.2	20.0-66.0	29.0-77.2	55.4	21.2-42.2	29.0-56.2	19.8-54.0	45.4-63.0
Weighted Average	35.8	40.2	35.1	35.6	38.5	43.9	42.5	40.8	46.6	34.6	36.8	36.7	42.2	37.6	48.4	55.4	32.2	38.5	35.1	54.2
Cu lbs/T																				
Value Range	0.07-0.9	0.68	0.1-2.4	0.1-0.6	0.1-0.6	0.0-1.3	0.1-1.5	0.1-0.9	0.1-1.7	0.1-0.8	0.1-0.6	0.2-0.9	0.1	0.1-1.0	0.2-1.4	1.3	0.1-0.5	0.1-0.7	0.1-1.0	0.4-0.8
Weighted Average	0.4	0.68	0.5	0.4	0.4	0.5	0.4	0.4	0.8	0.3	0.4	0.6	0.1	0.4	0.8	1.3	0.3	0.4	0.4	0.6
% Moisture																				
Value Range	14.8-49.1	24	11.9-37.8	6.5-20.7	18.5-39.9	9.6-22.8	8.8-16.2	12.3-30.1	24.0-30.4	14.3-51.7	22.7-25.5	18.4-22.5	79.3	11.9-47.9	12.1-31.5	19.1	11.7-42.2	12.4-36.3	8.2-64.2	25.9-27.2
Weighted Average	25.2	24	22.8	14	30.8	15	12.6	22	27.6	25.1	24.1	20	79.3	22.2	18.9	19.1	23.4	22.6	26.7	24.7
C:N Ratio																				
Value Range																				
Weighted Average																				
NH-3																				
Value Range	6.8-15.8	15	5.6-13.6	4.2-12.4	7.2-12.0	9.6-22.8	8.8-16.2	8.8-14.6	10.0-19.0	5.0-15.0	8.2-12.4	11.6-13.6	4	5.0-19.8	8.8-16.4	23.2	8.0-16.4	6.0-21.6	3.6-17.2	12.8-13.0
Weighted Average	11.8	15	10.2	8.2	9.5	15.1	12.7	11.4	13.6	10.8	10.4	12.3	4	10.6	11.7	23.2	12	13.3	8.6	12.9
Ca lbs/T																				
Value Range	15.2-131.8	43.8	19.0-204.0	22.8-178.2	31.4-234.2	24.6-181.4	57.2-114.0	51.4-160.0	34.4-67.6	17.0-101.6	32.8-54.0	43.8-81.8	123.4	33.0-103.8	55.0-274.0	52.6	30.8-118.0	42.0-174.6	19.0-173.8	48.0-75.4
Weighted Average	50	43.8	79.1	101.9	105.5	74.3	80.9	79.8	53.2	69.4	43.4	61.3	123.4	63.8	113.6	52.6	73.4	78.7	58	61.7
Mg lbs/T																				
Value Range	2.6-8.4	7.6	2.8-16.6	4.0-11.6	4.2-16.4	2.2-11.8	5.2-10.8	6.8-10.4	5.0-11.8	3.6-13.0	4.6-6.8	7.2-12.2	61.4	5.8-16.0	6.0-19.4	11.8	5.0-8.6	8.2-13.6	3.8-15.4	14.0-22.2
Weighted Average	6	7.6	8.1	9.1	9.1	8.5	8.2	9	7.8	7.4	5.8	9.1	61.4	10.3	11.1	11.8	7	10.7	8.6	18.1
% H2O Extract P																				
Value Range																				
Weighted Average																				

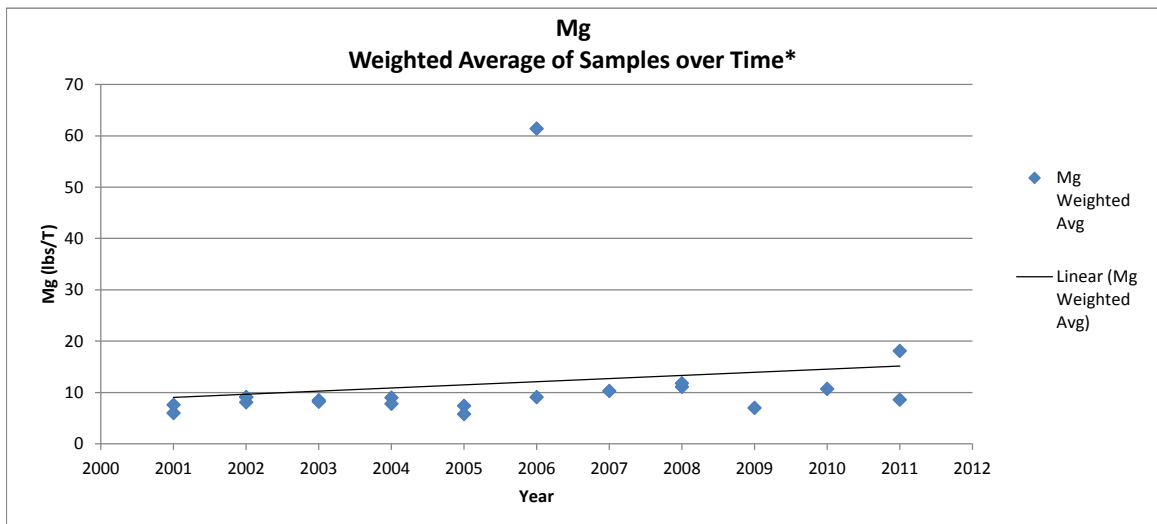
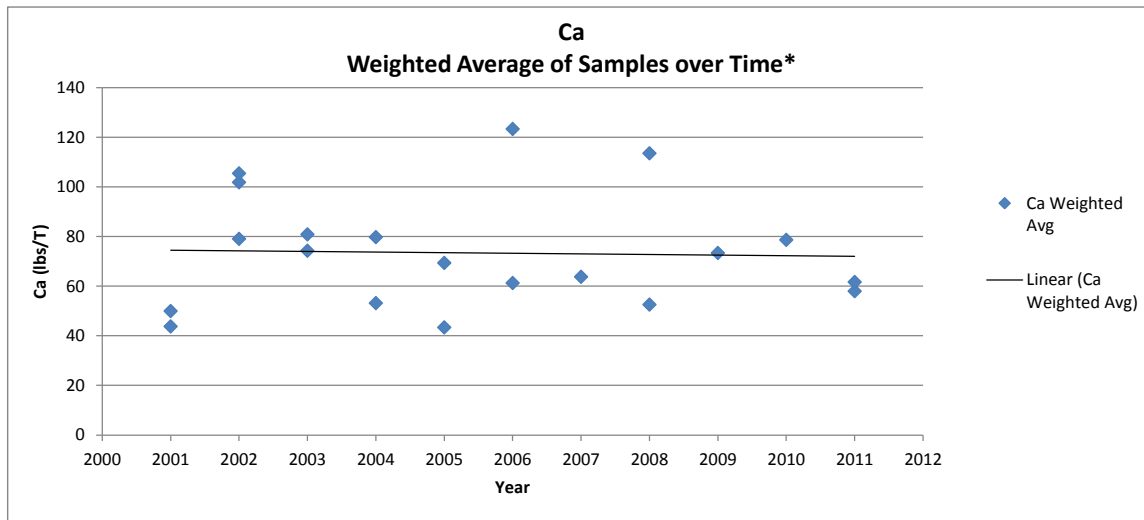
Breeder (turkey) graphs



Breeder (turkey) graphs



Breeder (turkey) graphs



*The following data points are based on a single litter sample:

2001 uncovered

2006 other

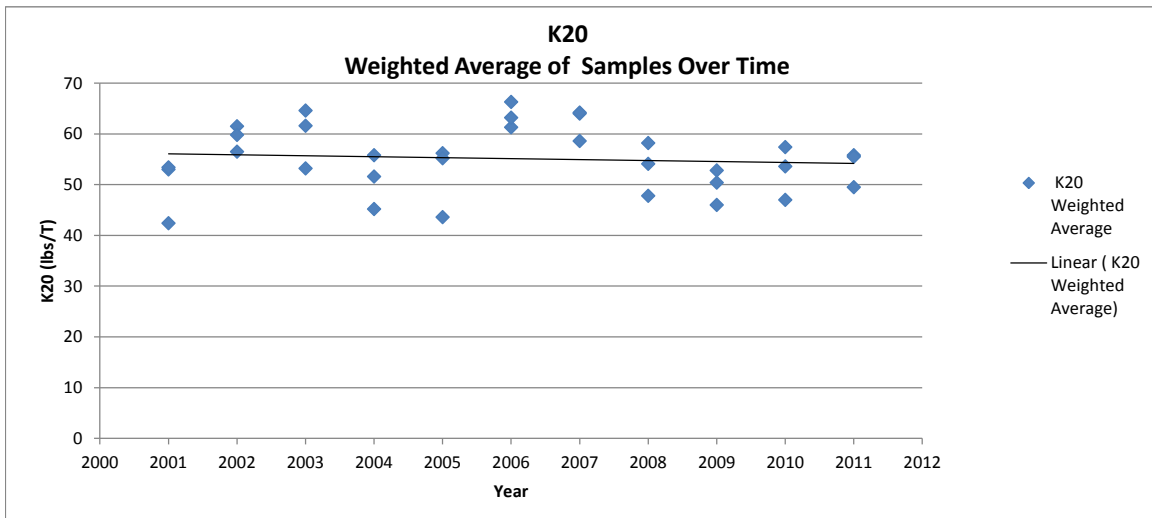
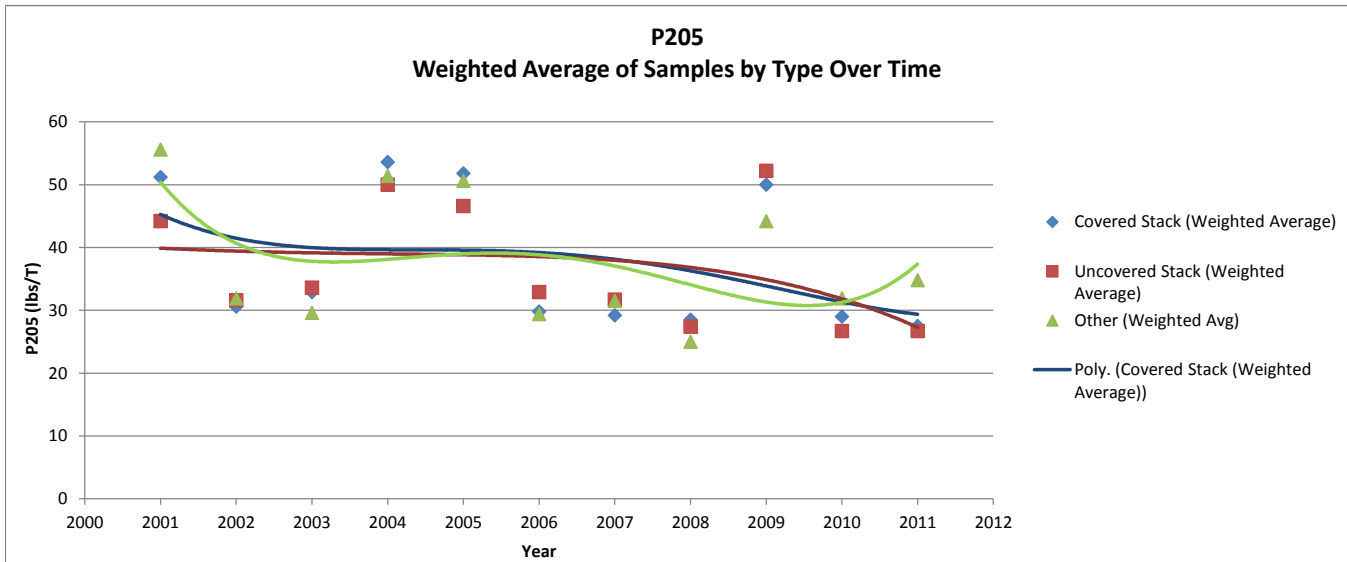
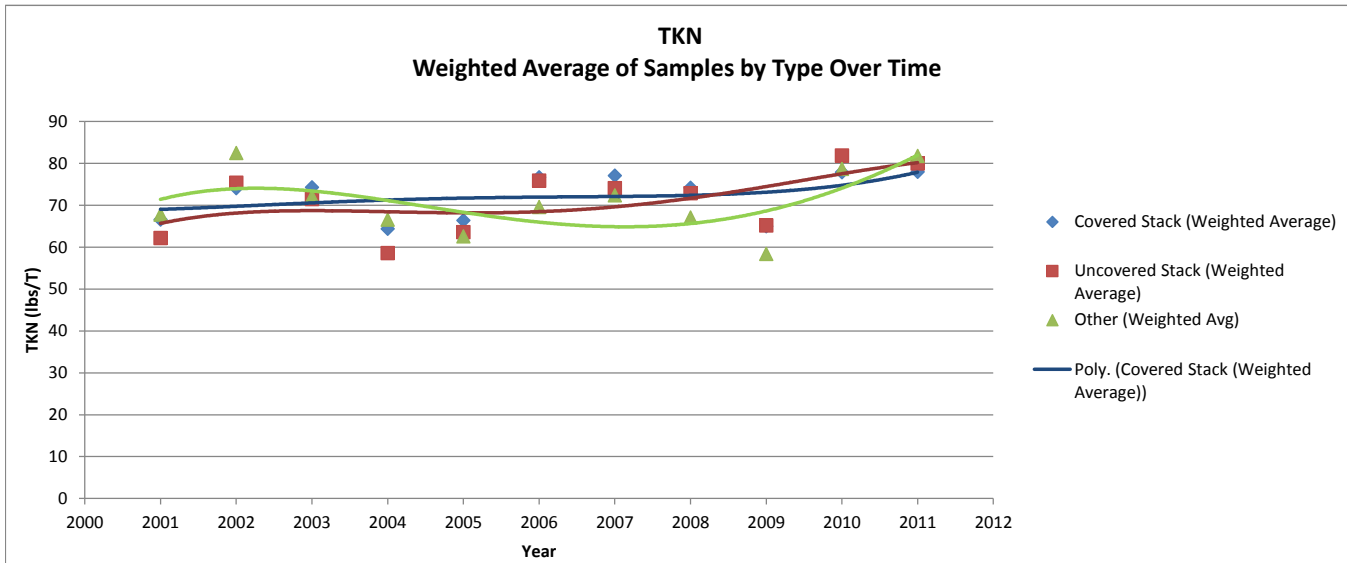
2008 other

Broiler

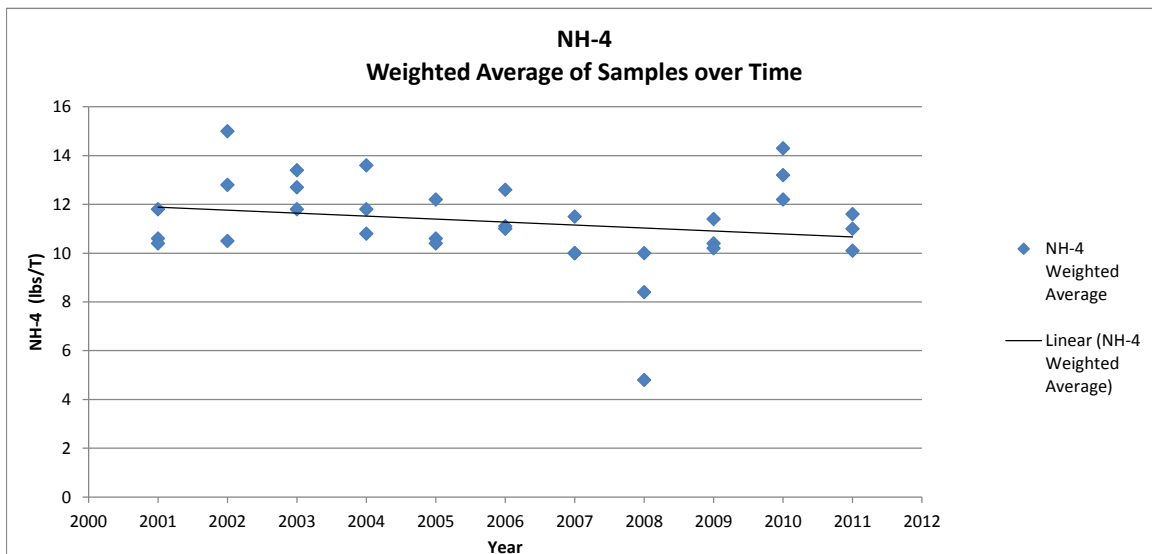
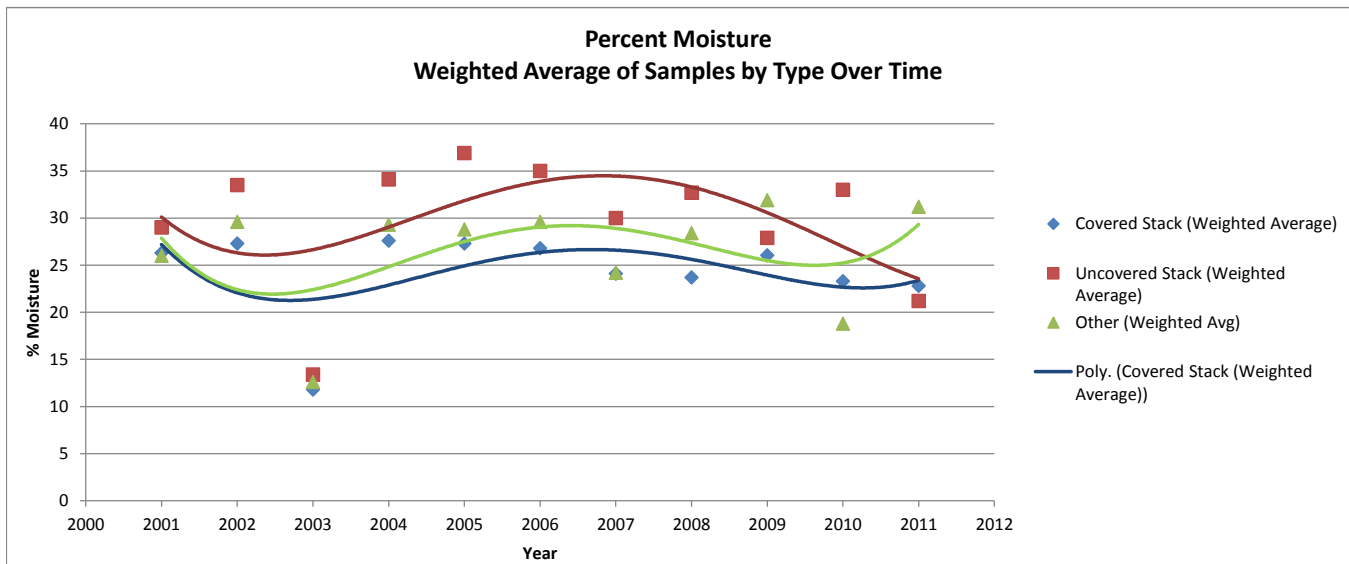
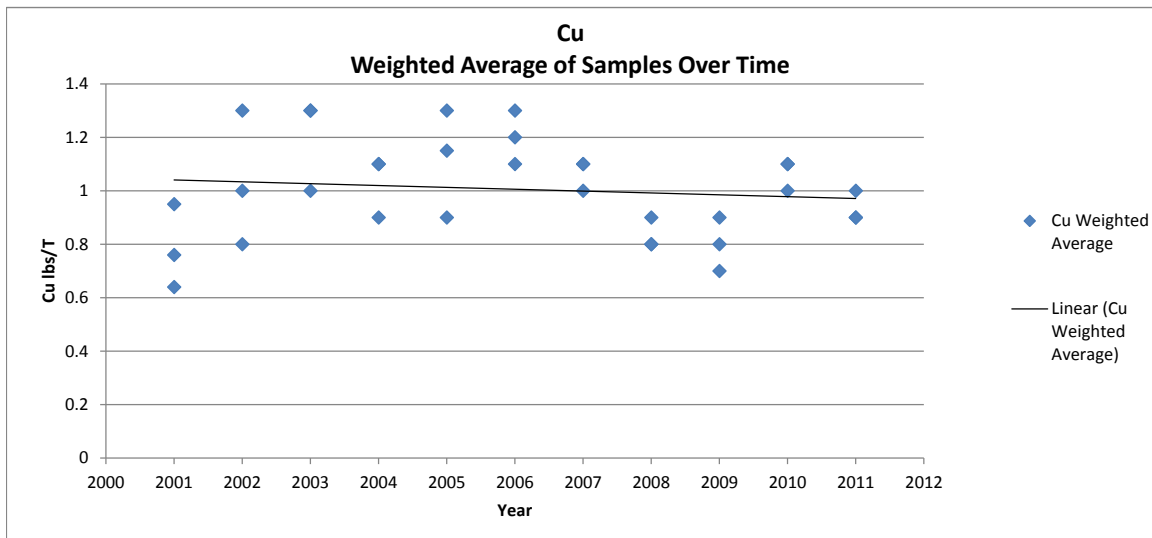
2012 Poultry Litter Subcommittee Broiler State Data Request

State Agency Lab	Virginia																																			
	Dept. of Conservation and Recreation																																			
	Clemson																																			
Year																																				
Year	2001	2001	2001	2002	2002	2002	2002	2003	2003	2003	2003	2004	2004	2004	2005	2005	2005	2006	2006	2006	2007	2007	2007	2007	2008	2008	2008	2009	2009	2009	2010	2010	2010	2011	2011	2011
Manure Type																																				
Dry	x	x	x	x	x	x	x	x	x	x	x	x	x	x	x	x	x	x	x	x	x	x	x	x	x	x	x	x	x	x	x	x	x	x		
Wet																																				
Sample Type																																				
In-House																																				
Uncovered Stack		x			x				x				x			x					x				x			x						x		
Covered Stack	x			x				x				x					x				x							x				x				
Roofted Storage																																				
Other (specify)			x			x				x						x				x						x				x			x			
Sample Number (1-10,000)	136	27		25	219	19	6	356	29	54	226	19	22	251	14	19	179	12	11	195	8	9	137	10	5	250	20	18	155	6	4	226	14	21		
TKN lbs/T																																				
TKN Value Range (low)	33	14	55.4	30.4	46	59.8	20.8	42.2	15.6	28.8	25.8	52.2	25.2	20.4	42	35.6	51.4	54.8	41	60.8	63.6	39.8	47.2	56.2	22.4	45.2	30	50.8	64.4	63.4	35.6	60.6	50.4			
TKN Value Range (high)	144.6	101	103.8	115.4	98.8	109	120.6	94.6	102.2	98.8	72.8	92.6	102.8	123.2	78.2	101	88.8	86	110.2	84.4	77.4	100	96	80.8	140.8	81	79.8	118.4	122.2	89.4	111.4	104.2	104.8			
TKN Weighted Average	66.6	62.2	67.8	74.1	75.4	82.5	74.3	71.5	72.1	64.4	58.6	66.6	66.4	63.6	62.6	76.7	75.9	69.6	77.1	74.1	72.4	74.2	72.9	67.1	65	65.2	58.4	77.9	81.9	78.7	78	81.8	80			
P205 lbs/T																																				
Value Range	24.6-95	15.4-80.6	38.4-78.8	7.6-58.4	20.4-43.2	22.8-42.0	6.2-63.4	15.6-80.4	9.0-45.8	24.4-116.8	19.6-63.8	9.2-67.6	3.4-96.4	21.4-73.4	39.4-69.6	11.8-65.6	20.8-42.8	24.2-34.4	14.0-66.0	26.2-53.4	27.6-38.0	9.2-48.6	19.2-43.6	18.6-35.2	21.8-118.4	35.0-94.4	17.4-73.2	18.8-55.2	18.6-30.4	24.4-42.8	12.6-68.0	24.2-61.0	17.2-39.8			
P205 Weighted Average	51.2	44.2	55.6	30.6	31.6	31.9	32.9	33.6	29.6	53.6	50	51.4	51.8	46.6	50.6	29.8	32.9	29.4	29.2	31.7	31.5	28.5	27.4	25	50	52.2	44.2	29	26.7	31.9	27.5	34.8	26.7			
high																																				
low																																				
K20 lbs/T																																				
Value Range	31.4-91.2	7.4-68	36.8-83.2	6.8-101.2	43.2-92.6	48.8-65.5	21.8-130.8	23.0-89.2	9.8-76.2	26.0-103.0	13.4-54.2	23.4-67.2	13.8-94.2	1.0-88.0	37.2-72.4	7.8-98.8	40.6-106.6	52.8-80.2	23.4-101.4	51.2-81.8	53.2-81.6	31.6-95.2	33.6-76.4	46.6-60.4	16.6-103.2	35.8-74.6	24.0-64.4	26.2-92.0	28.6-67.0	42.4-59.4	9.4-95.4	35.8-81.0	42.8-74.4			
K20 Weighted Average	53	42.4	53.4	61.5	59.8	56.5	64.6	61.6	53.2	55.8	45.2	51.6	56.2	43.6	55.2	61.3	66.3	63.2	58.6	64	64.2	58.2	47.8	54.1	52.8	50.4	46	57.4	47	53.6	55.8	49.5	55.5			
high																																				
low																																				
Cu lbs/T																																				
Value Range	0.05-2.35	0.06-1.6	0.40-2.24	0.1-3.2	0.1-2.9	0.1-1.4	0.1-4.1	0.5-2.6	0.4-2.0	0.3-3.0	0.2-1.5	0.0-1.7	0.04-2.38	0.2-2.1	0.6-2.1	0.2-3.1	0.7-2.3	0.6-1.7	0.2-2.5	0.6-1.4	0.6-1.7	0.2-2.3	0.2-1.5	0.4-1.6	0.0-2.1	0.1-1.5	0.2-1.4	0.2-2.3	0.4-1.5	0.9-1.6	0.1-2.3	0.1-2.2	0.1-1.8			
Cu Weighted Average	0.95	0.64	0.76	1.3	1	0.8	1.3	1.3	1	1.1	0.9	1.1	1.15	0.9	1.3	1.2	1.3	1.1	1.1	1.1	1	0.9	0.8	0.8	0.8	0.9	0.7	1.1	1	1.1	0.9	0.9	1			
high																																				
low																																				
% Moisture																																				
Value Range	6-50.8	12.5-42.6	10.7-43.5	13.0-69.5	20.0-65.0	21.0-39.5	0.0-30.6	0.0-22.8	0.6-39.0	10.6-63.8	21.9-54.0	20.4-44.0	10.0-59.7	4.5-80.9	21.0-39.9	11.7-63.2	15.5-61.0	16.7-40.7	10.4-39.2	19.2-61.0	15.4-39.4	10.4-56.2	17.8-44.4	10.7-52.2	11.7-60.3	10.0-53.2	18.6-66.2	5.6-50.8	24.5-39.8	7.8-34.0	6.3-78.4	8.3-58.8	0.3-42.6			
% Moisture Weighted Average	26.3	29	26	27.3	33.5	29.6	11.8	13.4	12.6	27.6	34.1	29.3	27.3	36.9	28.8	26.8	35	29.6	24.1	30	24.2	23.7	32.7	28.4	26.05	27.9	31.9	23.3	33	18.8	22.8	31.2	21.2			
high																																				
low																																				
C:N Ratio																																				
Value Range																																				
Weighted Average																																				
high																																				
low																																				
NH-4																																				
Value Range	0.6-98.8	0.0-25.8	5-16.2	0.8-29	5.2-21.8	8.6-20.8	0.0-30.6	0.0-22.8	0.6-39.0	2.8-27.8	7.4-24.0	4.4-18.8	1.0-26.0	3.6-19.6	4.4-21.4	0.0-23.6	4.4-17.8	5.0-17.8	2.6-24.6	4.4-21.4	3.8-15.6	0.6-19.8	0.2-18.4	2.6-5.8	0.6-74.4	2.0-21.4	4.4-26.6	1.2-49.0	11.0-19.2	7.8-17.2	0.6-27.8	4.8-18.0	5.2-17.4			
NH-4 Weighted Average	11.8	10.6	10.4	10.5	12.8	15	11.8	13.4	12.7	10.8	13.6	11.8	10.6	12.2	10.4	11.1	12.6	11	11.5	10	10	10	8.4	4.8	10.4	10.2	11.4	12.2	14.3	13.2	11.6	11	10.1			
high																																				
low																																				
Ca lbs/T																																				
Value Range	20.2-224.8	21.2-227.2	25.4-55	17.2-179.4	35.2-91.2	41.6-67.0	23.4-317.0	32.0-424.8	12.8-85.0	14.0-116.2	22.6-49.4	13.8-44.6	5.4-155.4	7.4-57.2	24.4-47.2	24.6-107.4	41.8-79.0	38.8-80.0	19.0-269.6	40.8-73.0	43.6-67.4	19.0-118.8	38.0-79.4	33.6-58.8	16.6-196.8	22.4-120.8	11.4-150.0	26.0-213.6	36.8-70.4	57.0-74.0	18.4-214.0	38.2-211.6	17.6-165.6			
Ca Weighted Average	40	43.2	37.8	52.1	53.9	53.3	56.5	76.4	48.2	39.2	37.4	34.6	38.2	36	33.4	50.4	55	49	52.7	51.7	54	52.8	51.3	43.6	39.4	43.8	38.6	53.8	47.9	62.5	48.1	70	46.7			
high																																				
low																																				
Mg lbs/T																																				
Value Range	4.6-16	5.6-118.2	6.8-13.8	4.0-22.6	8.2-19.2	10.2-15.8	5.4-33.2	6.4-23.4	3.6-16.6	5.4-25.4	5.0-10.0	5.0-13.2	1.8-17.2	1.4-14.8	5.6-12.1	5.8-26.2	10.2-19.6	10.8-15.0	5.4-24.4	11.0-24.8	11.2-18.8	5.4-34.2	8.4-15.6	11.4-15.6	1.6-25.6	6.4-20.4	4.2-12.0	9.8-59.6	8.4-51.4	11.8-17.2	4.8-22.2	9.8-31.8	8.2-18.6			
Mg Weighted Average	9.6	12.4	9.6	13.3	12.6	12.2	13.2	13.1	10.7	9.8	7.8	9.2	9.8	8.4	9.6	13.1	13.6	12.7	12.9	14.2	14.2	13.6	12.2	13	39.4	9.6	8.8	15.7	24.4	15	13.1	15.7	12.4			
high																																				
low																																				
% H2O Extract P																																				
Value Range																																				
Weighted Average																																				

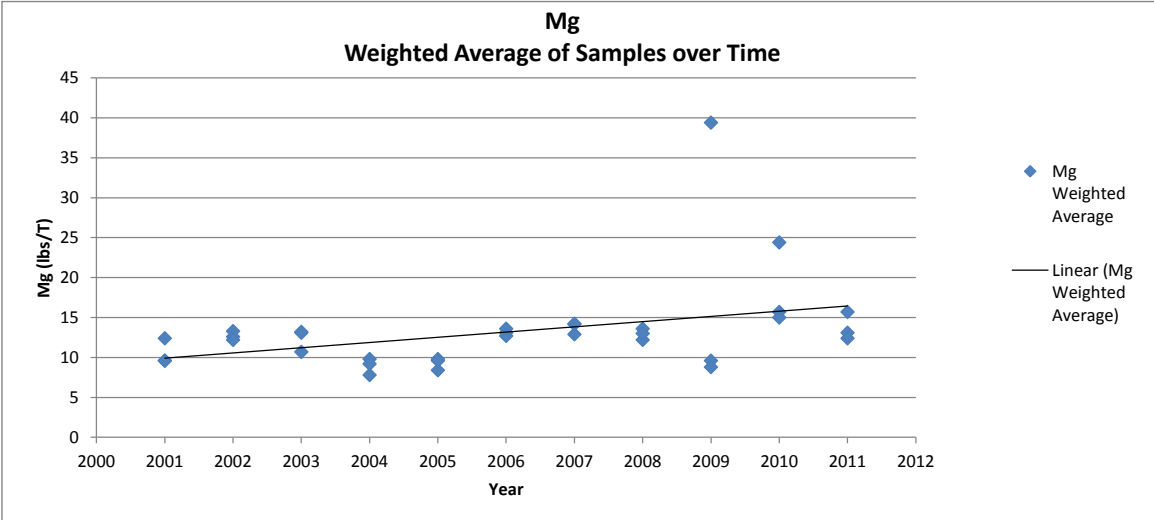
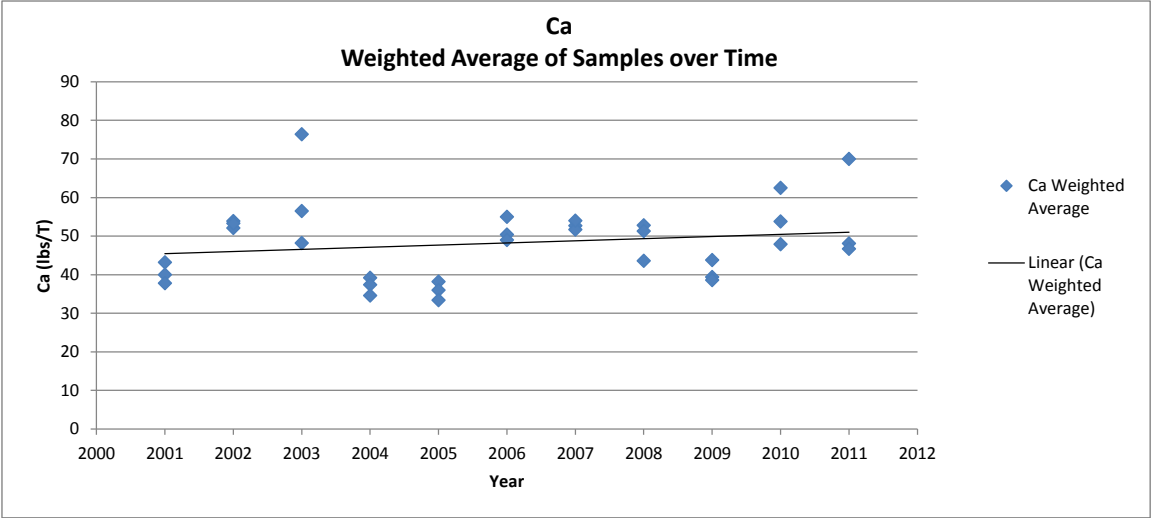
Broiler graphs



Broiler graphs



Broiler graphs

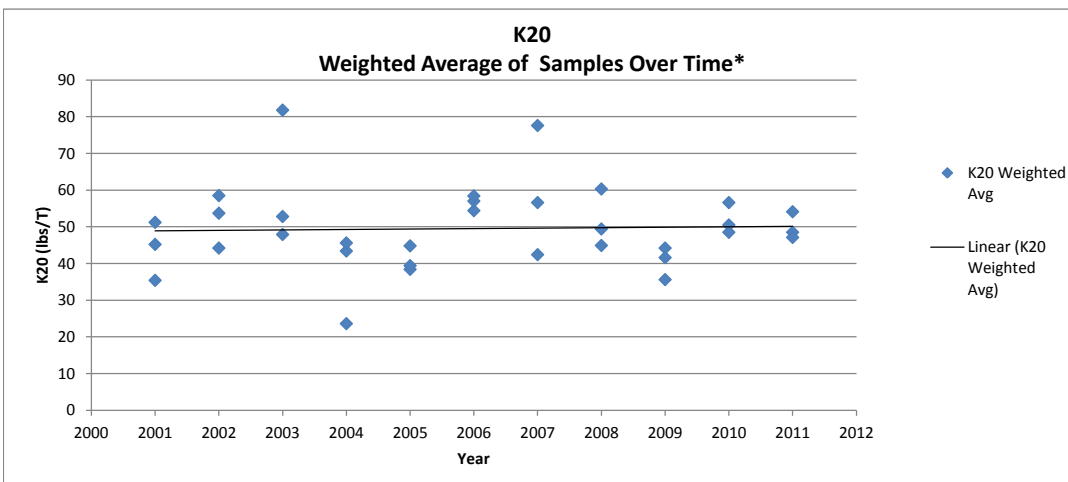
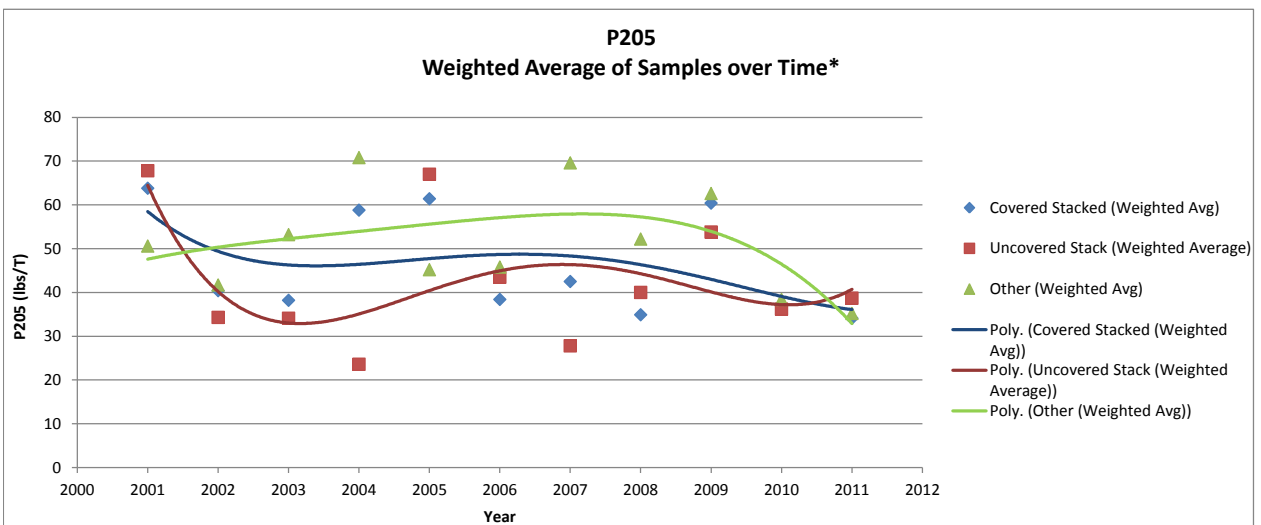
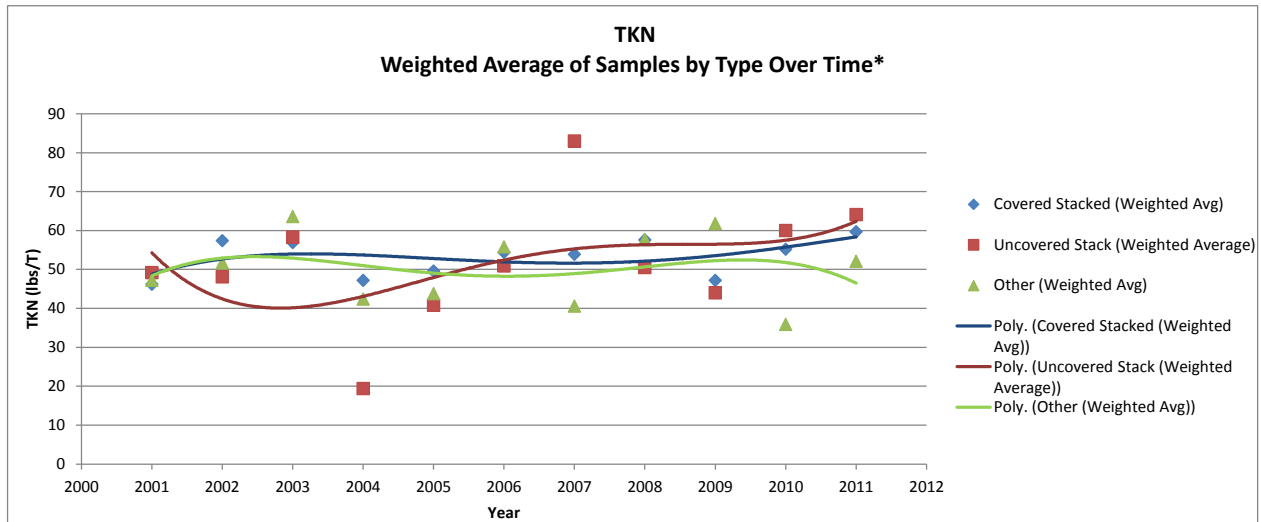


Layer (breeder)

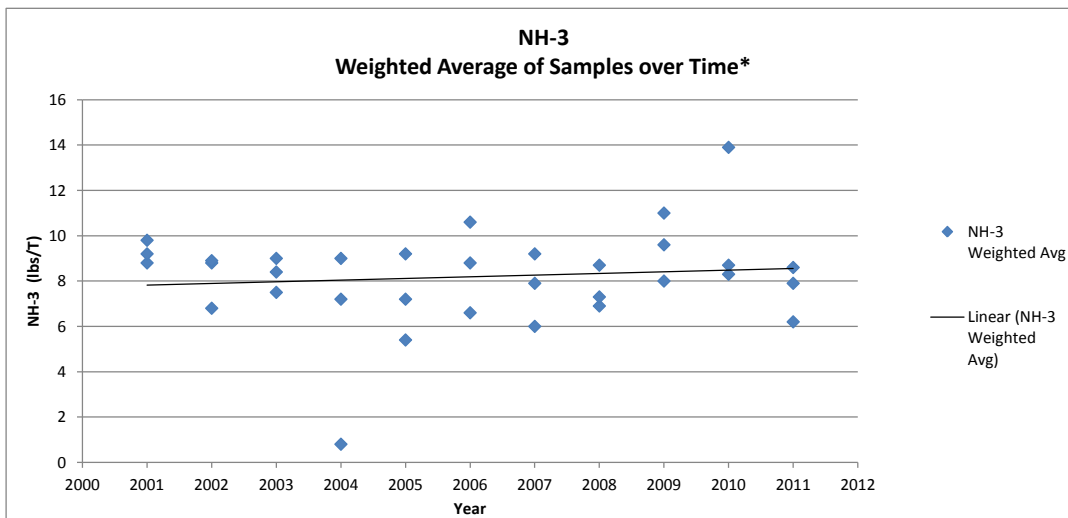
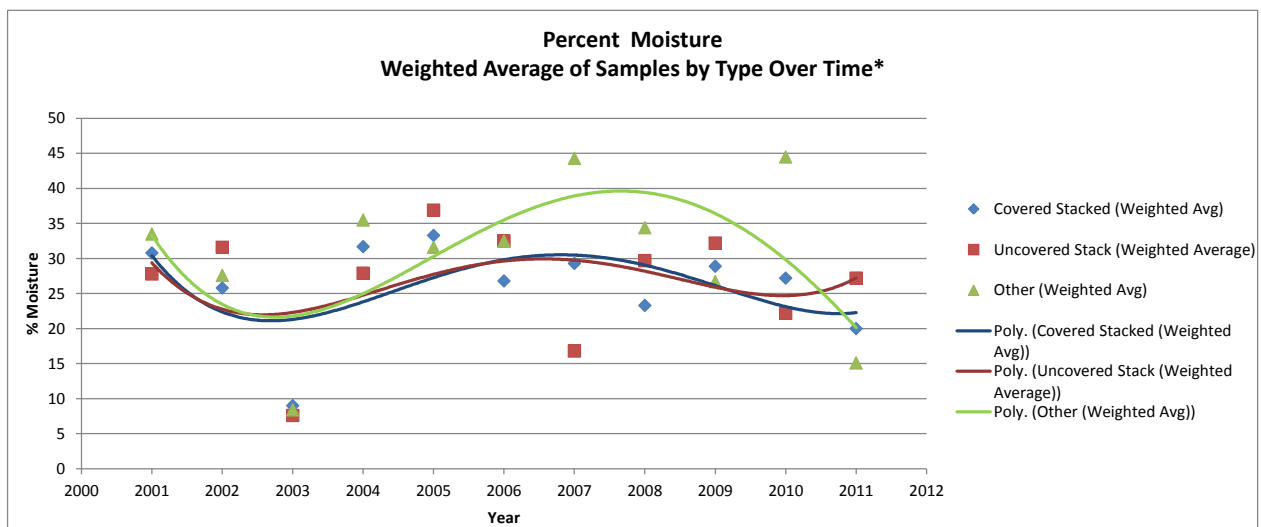
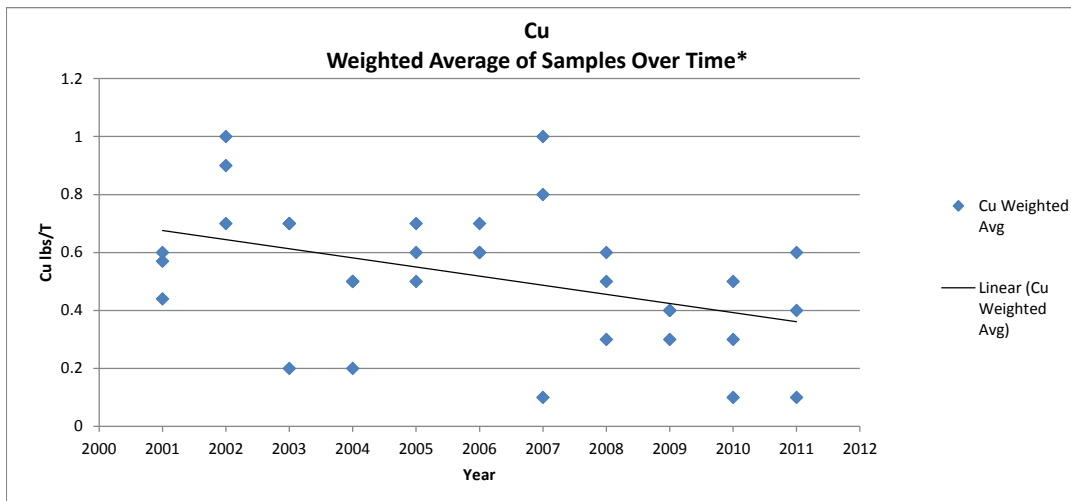
2012 Poultry Litter Subcommittee Layer State Data Request

State	Virginia																																	
Agency Lab	Dept. of Conservation and Recreation Clemson																																	
Year																																		
(1985-Present)	2001	2001	2001	2002	2002	2002	2003	2003	2003	2004	2004	2004	2005	2005	2005	2006	2006	2006	2007	2007	2007	2008	2008	2008	2009	2009	2009	2010	2010	2010	2011	2011	2011	
Manure Type																																		
Dry	x	x	x	x	x	x	x	x	x	x	x	x	x	x	x	x	x	x	x	x	x	x	x	x	x	x	x	x	x	x	x	x		
Wet																																		
Sample Type																																		
In-House																																		
Uncovered Stack		x			x				x		x			x			x			x											x			
Covered Stack	x			x				x			x			x			x														x			
Roofed Storage																																		
Other (specify)		x				x			x					x													x				x			
Sample Number																																		
(1-10,000)	21	4		8	35	19	3	53	15	1	60	1	8	47	10	2	41	4	3	34	1	1	38	13	3	40	17	4	39	5	2	46	11	2
TKN lbs/T																																		
Value Range	13-74.8	42.2-54.8	21-64.2	24.2-88.8	18.6-80.2	41.6-57.4	12.0-115.4	34.4-87.0	63.6	8.2-95.2	19.4	31.6-54.2	15.4-74.8	16.0-59.0	42.6-45.0	19.4-97.8	44.2-57.0	27.8-73.2	19.6-78.4	83	40.6	26.6-92.4	27.0-66.2	43.4-75.0	16.6-132.2	12.0-76.6	40.0-85.0	30.0-93.8	42.2-86.6	24.6-47.2	38.8-104.6	37.6-90.2	49.6-54.6	
Weighted Average	46.2	49.2	47.2	57.4	48.1	51.7	56.9	58.3	63.6	47.2	19.4	42.4	49.6	40.8	43.8	54.4	50.9	55.8	53.9	83	40.6	57.6	50.5	57.7	47.2	44	61.8	55.2	60	35.9	59.7	64.1	52.1	
P205 lbs/T																																		
Value Range	37.4-95	43.8-90.8	34.2-70.2	23.0-68.0	6.0-60.8	21.2-55.6	11.0-61.0	17.0-45.4	53.2	18.2-108.2	23.6	43.2-93.0	19.4-101.8	38.8-88.8	37.0-53.4	20.0-61.4	36.0-54.0	43.4-49.4	25.6-66.6	27.8	69.6	13.8-75.6	19.6-64.4	40.6-68.8	20.8-120.4	15.2-93.4	51.4-66.6	10.6-61.2	27.8-46.2	36.6-40.2	22.6-55.4	24.0-54.0	32.8-37.6	
Weighted Average	63.8	67.8	50.6	40.4	34.3	41.7	38.2	34.1	53.2	58.8	23.6	70.8	61.4	67	45.2	38.4	43.5	45.8	42.5	27.8	69.6	34.9	40	52.2	60.4	53.8	62.6	36.9	36.2	38.4	34.1	38.7	35.2	
K20 lbs/T																																		
Value Range	19.2-61	43.8-69	18.6-46.4	28.0-75.4	6.0-70.4	31.2-74.4	20.4-91.6	33.6-64.0	81.8	4.0-72.2	23.6	35.4-62.8	13.2-68.4	9.2-53.0	37.8-41.0	31.2-102.6	42.4-70.0	53.2-63.2	25.0-90.0	42.4	77.6	23.4-77.6	19.8-73.2	48.2-72.2	23.0-60.8	3.8-49.4	35.4-43.8	25.4-76.6	40.4-57.6	51.4-61.8	30.4-68.2	41.2-86.0	42.6-51.6	
Weighted Average	45.2	51.2	35.4	53.7	44.2	58.5	52.8	47.9	81.8	43.4	23.6	45.6	44.8	38.4	39.4	54.4	57	58.4	56.6	42.4	77.6	44.9	49.4	60.3	44.2	35.6	41.6	50.5	48.5	56.6	48.5	54.1	47.1	
Cu lbs/T																																		
Value Range	0.07-1.12	0.31-1.29	0.07-1.02	0.1-1.9	0.1-1.2	0.1-1.6	0.1-4.5	0.1-1.2	0.2	0.1-1.8	0.2	0.1-0.9	0.1-1.3	0.3-0.9	0.7-0.7	0.1-1.4	0.2-0.9	0.1-1.0	0.1-1.9	0.1	1	0.1-1.8	0.1-0.9	0.201-0	0.1-1.2	0.0-0.8	0.2-0.5	0.1-1.5	0.1-0.8	0.1-0.1	0.1-1.6	0.1-1.1	0.1-0.2	
Weighted Average	0.57	0.6	0.44	0.9	0.7	1	0.7	0.7	0.2	0.5	0.2	0.5	0.5	0.6	0.7	0.7	0.6	0.6	0.8	0.1	1	0.5	0.3	0.6	0.4	0.4	0.3	0.5	0.3	0.1	0.6	0.4	0.1	
% Moisture																																		
Value Range	12.1-51.4	18.3-35.8	20.4-67.4	7.2-69.3	9.5-60.9	22.8-36.5	3.4-22.8	3.0-10.4	8.4	12.6-65.3	27.9	15.0-47.1	10.4-62.5	24.0-54.3	23.7-39.6	13.0-51.6	15.2-38.2	23.0-39.8	10.4-57.3	16.8	44.3	8.2-61.7	17.4-48.2	23.6-50.8	9.2-61.8	18.9-62.7	13.9-40.3	10.0-60.6	16.0-28.8	44.0-45.0	5.3-59.7	11.0-55.8	14.8-15.3	
Weighted Average	30.8	27.8	33.5	25.8	31.6	27.6	9	7.6	8.4	31.7	27.9	35.5	33.3	36.9	31.6	26.8	32.5	32.5	29.3	16.8	44.3	23.3	29.7	34.4	28.9	32.2	26.7	27.2	22.2	44.5	20	27.2	15.1	
C:N Ratio																																		
Value Range																																		
Weighted Average																																		
NH-3																																		
Value Range	4.2-16.2	4.6-13.4	6.2-13.4	2.8-21.2	2.8-13.2	7.0-10.0	3.4-22.8	3.0-10.4	8.4	0.0-14.4	0.8	3.6-15.6	0.2-23.0	1.0-12.2	4.4-6.2	3.8-15.2	7.8-15.0	6.2-6.8	0.6-15.4	9.2	6	3.6-27.6	1.6-14.6	5.8-8.6	2.6-69.4	1.2-20.8	5.6-20.6	2.0-15.2	6.0-12.6	11.6-6.2	2.6-23.8	2.2-13.0	8.2-9.0	
Weighted Average	8.8	9.2	9.8	8.8	6.8	8.9	9	7.5	8.4	7.2	0.8	9	9.2	7.2	5.4	8.8	10.6	6.6	7.9	9.2	6	8.7	6.9	7.3	9.6	8	11	8.3	8.7	13.9	6.2	7.9	8.6	
Ca lbs/T																																		
Value Range	25.4-255.8	41.8-202	25.6-162.2	30.8-362.8	22.0-313.4	25.4-280.4	15.6-391.0	29.0-218.4	375.4	35.6-204.6	38.2	91.6-168.6	26.8-203.8	20.6-160.2	74.6-90.8	34.2-336.4	54.0-212.2	182.8-229.2	34.2-353.8	131.8	250.4	25.2-311.6	26.4-328.8	138.8-256.4	18.2-308.2	28.8-140.2	47.0-193.2	31.6-291.4	55.6-213.0	244.0-273.0	28.8-295.6	44.0-338.8	42.2-54.2	
Weighted Average	121.8	123.6	96.6	160.5	163.2	125.4	172.5	118.9	375.4	119.8	38.2	142.8	106.6	88.4	82.8	135.3	113.3	203.9	186.7	131.8	250.4	159	193	188.5	117	77.8	123	178.2	117.8	258.5	157.8	180.2	48.2	
Mg lbs/T																																		
Value Range	5.2-15.6	6.2-17.4	4.2-11.4	7.0-21.4	4.8-17.8	8.2-20.0	4.0-26.6	5.4-16.8	17.8	2.0-18.0	3	6.4-10.2	3.6-14.6	4.8-13.6	6.8-7.0	5.6-22.4	12.2-18.6	13.2-14.8	8.2-22.8	9.2	16.6	4.8-22.6	6.4-21.2	11.0-16.4	4.8-15.8	3.4-15.0	7.8-10.6	7.8-188.4	9.2-25.2	14.2-16.0	8.0-19.8	10.2-20.0	11.0-13.6	
Weighted Average	9.6	10.8	7	13.5	11.8	14.9	12.7	11.7	17.8	8.6	3	8.8	9	8.8	6.9	13	15.1	14.2	13.8	9.2	16.6	11.6	12.9	13.3	9.6	7.8	9	18.3	14.5	15.1	12.2	13.9	12.3	
% H2O Extract P																																		
Value Range																																		
Weighted Average																																		

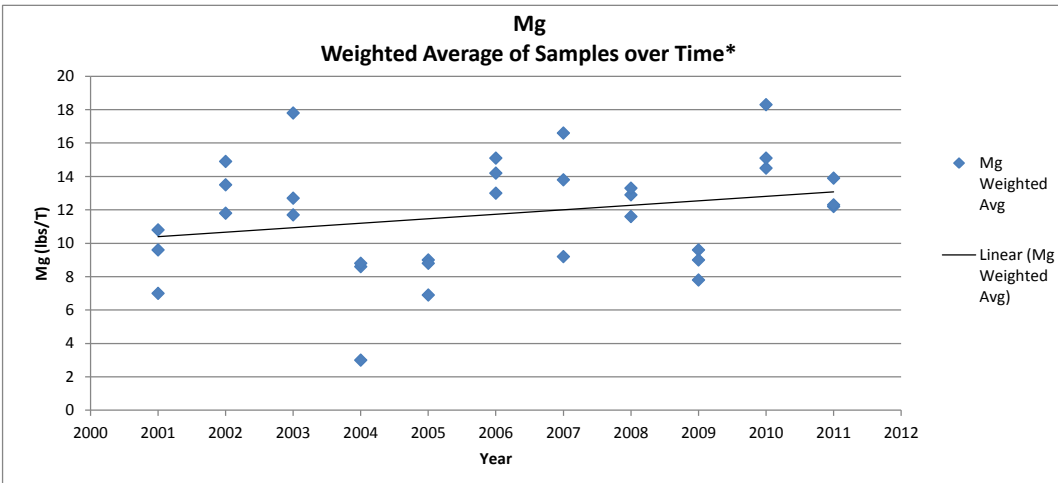
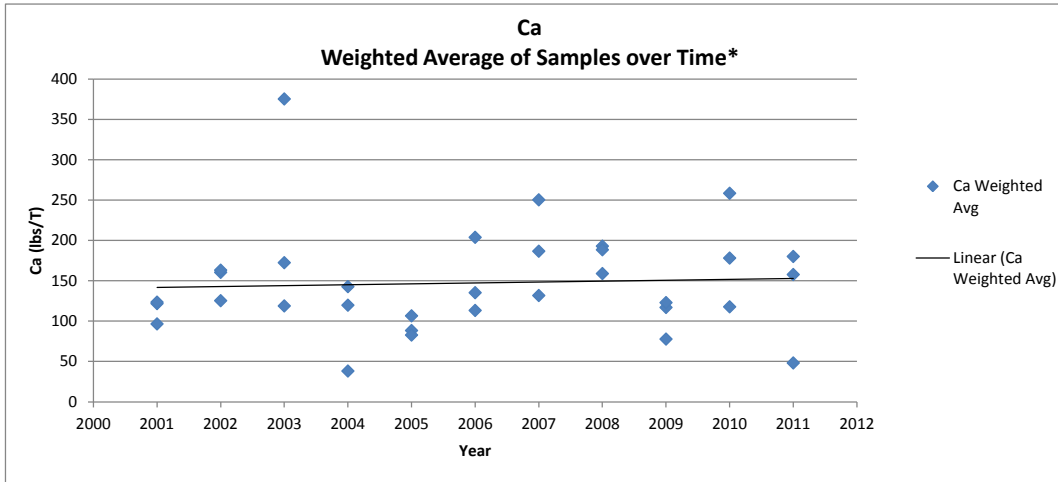
Layer (breeder) graphs



Layer (breeder) graphs



Layer (breeder) graphs



*The following data points are based on a single litter sample:

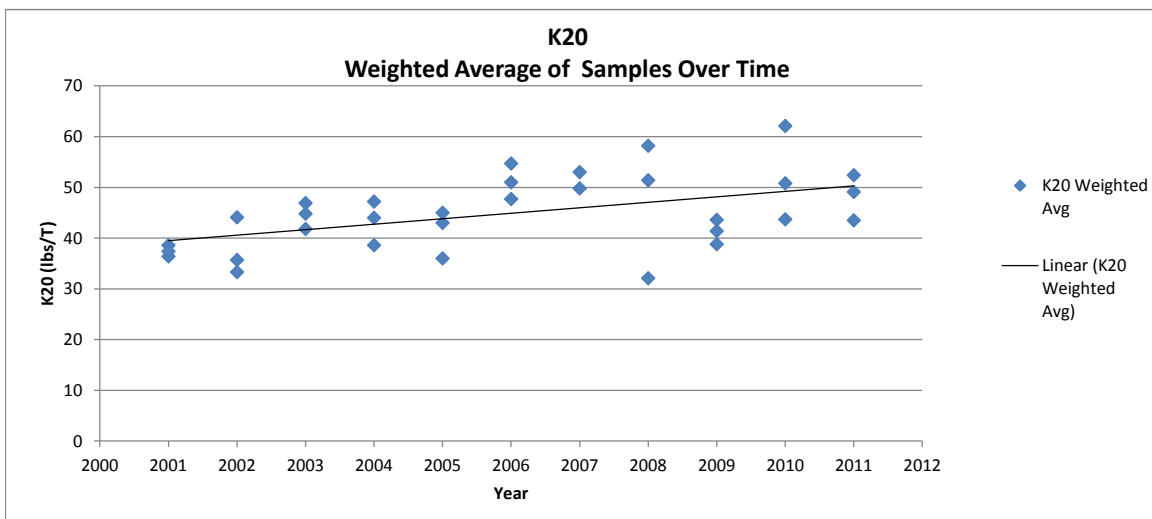
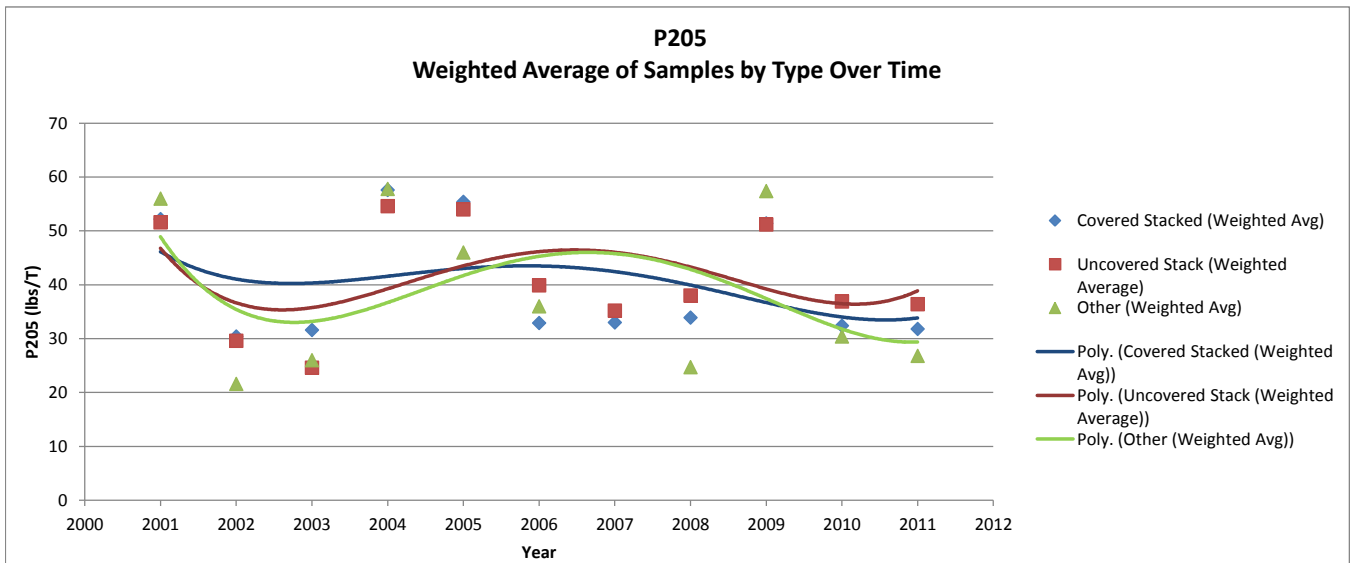
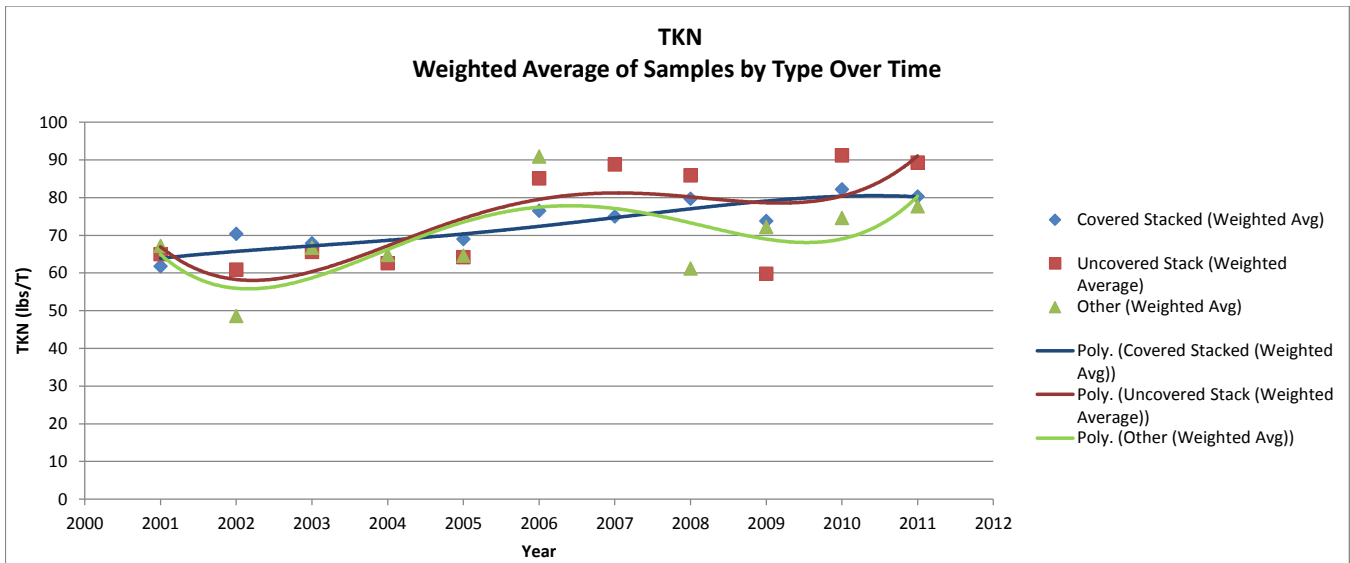
- 2003 other
- 2004 uncovered
- 2007 uncovered
- 2007 other

Turkey

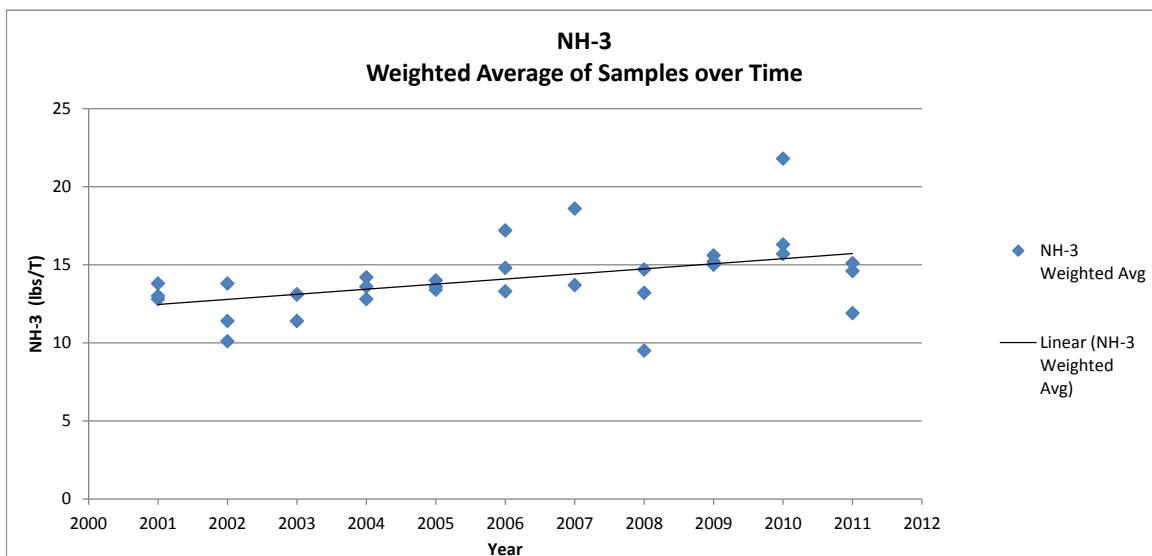
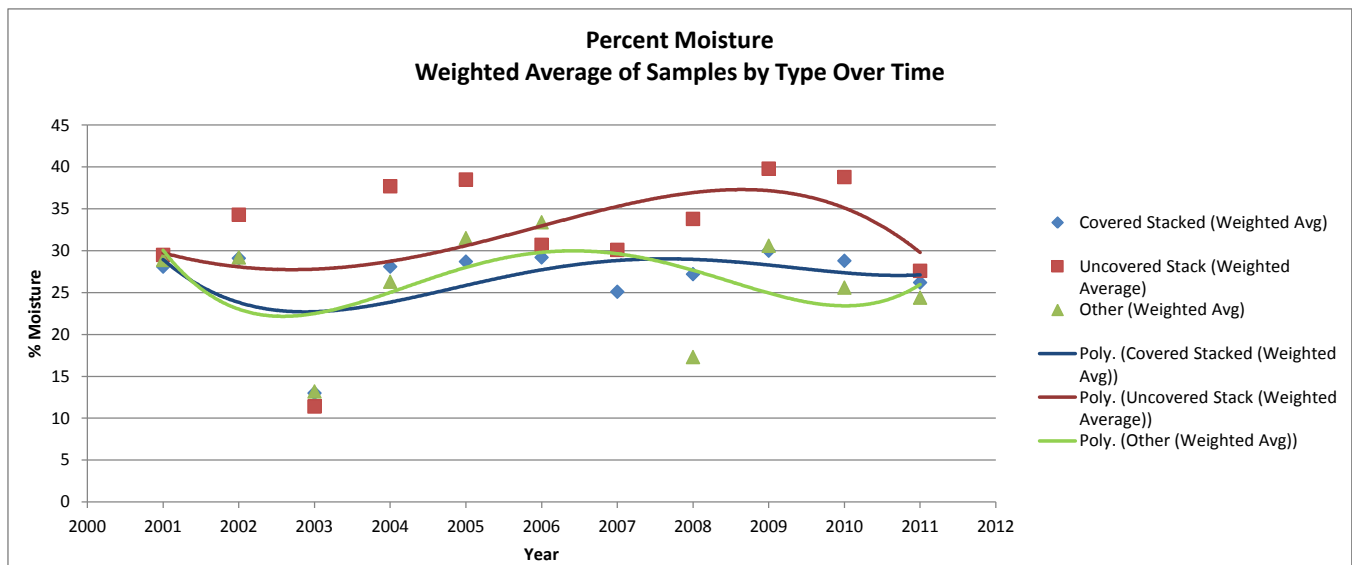
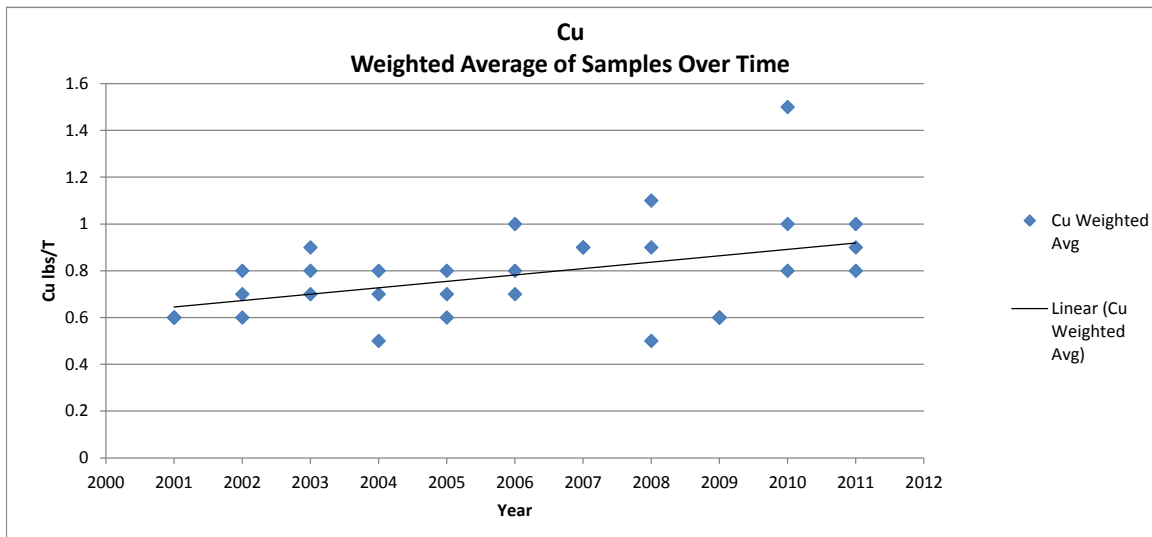
2012 Poultry Litter Subcommittee Turkey State Data Request

State Agency Lab	Virginia																																	
	Dept of Conservation and Recreation																																	
	Clemson																																	
Year (1985-Present)	2001	2001	2001	2002	2002	2002	2003	2003	2003	2003	2004	2004	2004	2005	2005	2005	2006	2006	2006	2007	2007	2008	2008	2008	2009	2009	2009	2010	2010	2010	2011	2011	2011	
Manure Type																																		
Dry	x	x	x	x	x	x	x	x	x	x	x	x	x	x	x	x	x	x	x	x	x	x	x	x	x	x	x	x	x	x	x	x		
Wet																																		
Sample Type																																		
In-House																																		
Uncovered Stack		x			x				x			x				x					x						x					x		
Covered Stack	x			x				x			x						x														x			
Roofed Storage																									x									
Other (specify)			x				x				x						x																x	
Sample Number (1-10,000)	84	16		22	95	15	15	146	11	52	109	10	5	94	15	9	98	10	3	107		4	69	12	7	125	12	8	76	4	5	92	9	8
TKN lbs/T																																		
Value Range	14.2-94.6	31.2-94.8	45.4-100.4	21.0-140.0	22.8-98.4	27.2-78.4	11.2-131.2	42.2-85.4	29.4-108.6	12.6-135.6	25.8-82.8	41.8-81.6	14.2-132.2	26.8-82.8	57.4-73.6	27.4-115.0	67.4-110.0	79.6-98.2	21.0-125.4	68.2-123.2	38.2-129.6	60.4-105.4	31.6-105.8	14.8-128.2	28.8-85.2	44.6-81.2	7.2-129.4	78.8-110.6	61.2-94.2	29.0-123.2	43.2-117.2	47.0-109.6		
Weighted Average	61.8	65	67.2	70.4	60.9	48.6	67.9	65.6	66.7	63	62.6	64.8	69	64.2	64.6	76.5	85.1	90.9	75	88.8	79.7	85.9	61.2	73.8	59.8	72.2	82.2	91.2	74.6	80.3	89.3	77.7		
P205 lbs/T																																		
Value Range	13.2-90.6	34-80.8	33.2-94	4.6-57.0	3.8-69.6	4.4-35.2	2.8-75.0	11.0-36.6	6.6-56.2	9.2-140.4	25.8-70.2	31.4-74.6	2.0-111.0	38.4-75.8	35.6-54.0	8.2-62.0	21.8-56.0	29.0-41.2	5.8-57.2	25.2-45.6	16.4-67.0	21.4-63.6	14.2-38.0	18.4-102.4	33.6-68.6	43.0-84.0	0.6-50.0	33.0-41.8	22.2-37.2	6.4-55.8	28.8-46.4	16.0-44.0		
Weighted Average	52.2	51.6	56	30.4	29.6	21.6	31.6	24.6	26	57.6	54.6	57.8	55.4	54	46	32.9	39.9	36	33	35.2	33.9	38	24.7	51.4	51.2	57.4	32.4	36.9	30.4	31.8	36.4	26.8		
K20 lbs/T																																		
Value Range	9.8-68	27.4-51	19.2-51.8	9.2-76.8	8.4-54.8	7.0-47.0	3.0-104.6	29.2-58.8	14.4-71.0	10.2-73.0	27.8-54.6	32.4-57.0	4.6-68.4	21.2-46.6	35.0-57.0	5.0-81.2	30.8-64.0	51.6-59.8	8.0-78.8	47.0-61.8	22.6-84.0	41.6-91.0	20.0-48.4	15.34-64.6	17.4-49.4	32.0-49.6	1.4-74.4	54.2-74.2	34.2-52.4	7.6-72.6	41.2-60.0	27.0-61.2		
Weighted Average	36.4	38.6	37.4	44.1	35.7	33.3	46.9	41.8	44.8	44	38.6	47.2	43	36	45	51	47.7	54.7	49.8	53	51.4	58.2	32.1	41.4	38.8	43.6	50.8	62.1	43.7	49.1	52.4	43.5		
Cu lbs/T																																		
Value Range	0.07-2.9	0.34-0.9	0.07-1.02	0.1-2.0	0.1-1.3	0.1-0.8	0.0-1.7	0.1-1.2	0.0-1.4	0.0-1.4	0.4-0.6	0.5-1.1	0.1-1.2	0.5-0.8	0.6-1.0	0.1-2.9	0.2-1.1	0.5-1.3	0.1-1.8	0.5-1.2	0.3-1.7	0.7-1.7	0.3-0.8	0.1-1.2	0.1-1.0	0.2-1.0	0.0-2.4	1.2-1.7	0.4-1.2	0.1-1.8	0.5-1.3	0.4-1.4		
Weighted Average	0.6	0.6	0.6	0.8	0.7	0.6	0.8	0.7	0.9	0.7	0.5	0.8	0.7	0.6	0.8	1	0.7	0.8	0.9	0.9	0.9	1.1	0.5	0.6	0.6	0.6	1	1.5	0.8	1	0.9	0.8		
% Moisture																																		
Value Range	10.2-53.5	21-42.4	14.7-42	9.0-65.5	16.4-62.9	15.0-42.1	0.6-28.4	6.4-17.8	5.0-27.4	4.9-70.9	27.4-58.2	16.8-41.6	11.5-60.8	27.6-47.6	19.5-42.5	14.4-63.5	18.3-39.8	29.7-38.3	8.5-61.7	23.9-35.0	11.2-57.0	16.1-49.0	10.7-34.4	12.5-61.4	27.6-61.9	17.2-41.1	9.1-66.1	31.6-57.5	12.8-39.0	11.3-60.2	11.9-49.4	17.6-37.5		
Weighted Average	28.1	29.5	28.9	29.1	34.3	29.2	13	11.4	13.2	28.1	37.7	26.3	28.7	38.5	31.5	29.2	30.7	33.4	25.1	30.1	27.2	33.8	17.3	30	39.8	30.6	28.8	38.8	25.6	26.2	27.6	24.4		
C:N Ratio																																		
Value Range																																		
Weighted Average																																		
NH-3																																		
Value Range	0.4-30.6	2.8-19.4	8.1-21.0	2.0-27.8	4.6-18.8	3.8-13.2	0.6-28.4	6.4-17.8	5.0-27.4	1.6-24.4	4.4-19.8	9.4-16.4	1.0-32.4	2.8-21.8	9.2-19.4	0.0-23.0	10.0-19.4	15.6-20.2	1.2-25.0	15.4-26.8	0.6-23.2	4.2-23.2	4.4-16.0	0.0-4.8	3.0-22.8	8.6-19.0	0.0-29.6	13.6-31.8	12.8-21.2	1.4-23.2	11.8-19.4	3.6-16.6		
Weighted Average	12.8	13.8	13	13.8	11.4	10.1	13.1	11.4	13.1	12.8	14.2	13.6	14	13.4	13.6	13.3	14.8	17.2	13.7	18.6	13.2	14.7	9.5	15.2	15.6	15	16.3	21.8	15.7	14.6	15.1	11.9		
Ca lbs/T																																		
Value Range	9.4-111	22.6-58.4	24.2-93.2	9.0-214.8	6.4-121.8	8.2-221.8	6.4-128.0	15.4-85.2	11.4-92.2	4.4-105.6	15.2-71.4	33.0-57.0	1.4-83.8	25.6-50.6	25.2-38.2	13.0-113.2	36.2-86.8	47.2-64.8	21.0-191.0	41.0-129.0	26.0-122.2	33.4-104.2	22.6-68.6	14.0-76.0	24.6-126.4	22.4-128.8	19.6-125.4	49.4-62.6	33.4-68.4	23.8-108.4	40.0-94.8	26.0-68.4		
Weighted Average	38.6	38.2	41.6	51.8	49.7	68.7	52.8	43.1	39.7	40.6	44.2	42.8	38.2	39.4	31.4	55	65.4	57.1	55.9	73.4	55.9	63.5	40.9	36	43.4	49	53.4	57.3	47.1	50.9	61.3	40.4		
Mg lbs/T																																		
Value Range	1.6-13.8	3.8-13.2	3-9.6	2.4-16.2	1.2-15.2	1.6-10.8	1.0-126.0	4.4-11.0	2.2-16.6	1.6-15.2	4.0-9.2	5.0-12.0	0.4-14.6	5.2-10.4	5.2-8.6	2.6-20.0	6.0-14.4	9.6-11.2	4.0-33.2	9.2-14.0	4.8-17.8	8.4-16.8	4.2-11.8	2.8-11.4	4.6-8.6	6.0-13.0	0.8-41.4	10.8-16.8	9.4-12.0	4.8-28.4	8.6-13.0	5.8-12.4		
Weighted Average	6	7	6.2	8.4	7.5	7	9.1	7.4	7.7	7.2	6.6	7.6	7.2	6.8	7	10.2	9.9	10.4	10.6	11	11.1	12.7	6.8	7.2	7	7.8	11.5	14.4	10.7	11.1	10.9	8.9		
% H2O Extract P																																		
Value Range																																		
Weighted Average																																		

Turkey Graphs



Turkey Graphs



Turkey Graphs

