



Chesapeake Bay Program Partnership

☞ Federal agencies

- Environmental Protection Agency (EPA)
- US Department of Agriculture (USDA)
- US Forest Service (USFS)
- US Geological Survey (USGS)
- US Fish and Wildlife Service (USFWS)

☞ State agencies

- Natural Resources/Environmental departments
- Agricultural departments
- Parks and Recreation groups
- Fish and Wildlife agencies

☞ Local Governments

☞ Non-profit organizations

☞ Academic institutions



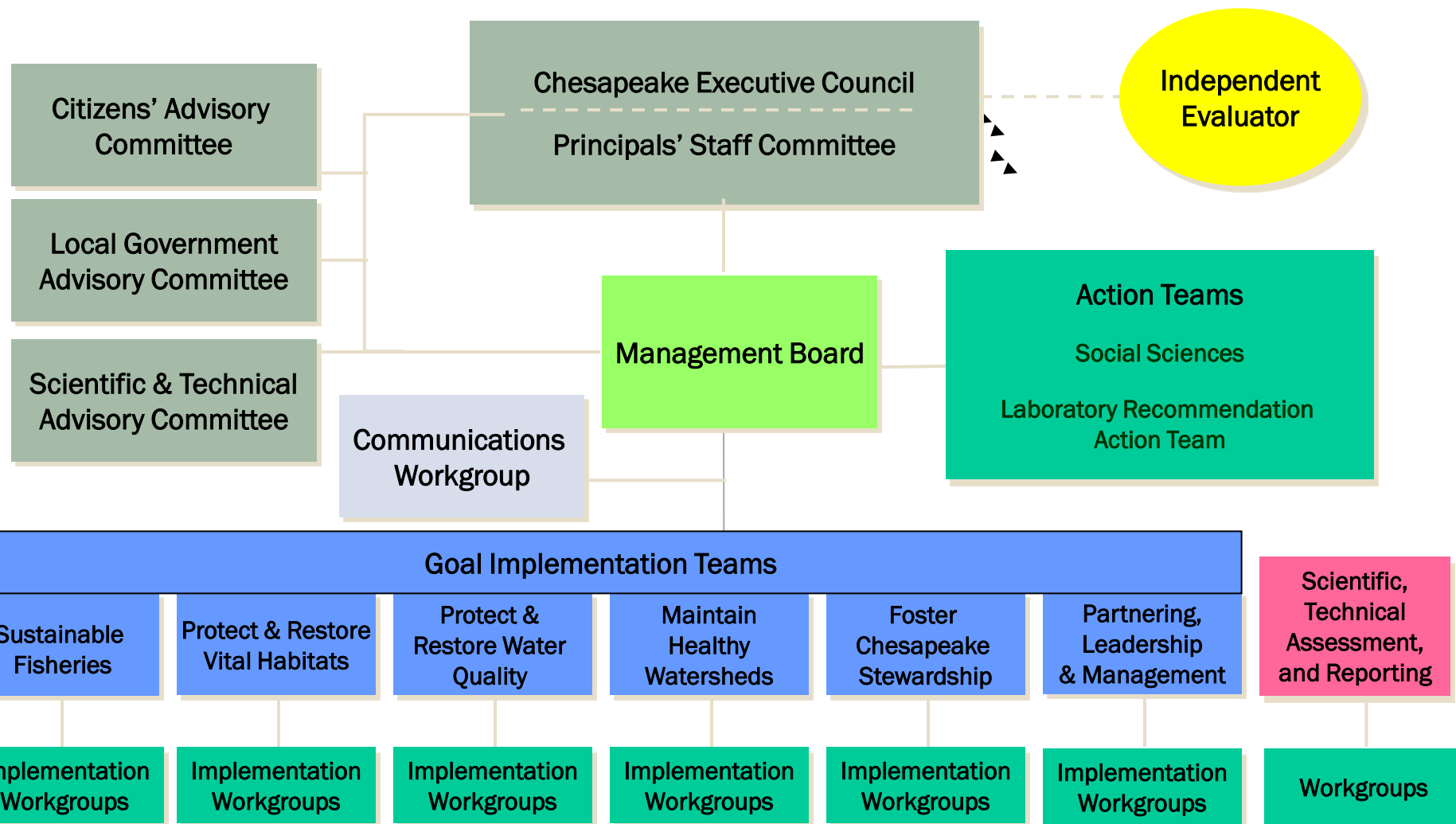
The Partnership Approach

- ☞ Brings together diverse leaders and experts across political boundaries and institutions to collaborate on achieving a common goal
 - Consolidate and coordinate efforts
 - Share resources
 - Compliment efforts and avoid duplication

- ☞ Partners come together to evaluate data, share best practices, report on progress toward goals, and make recommendations for program-wide policy and management decisions

Organizational Structure

(2013)



Organizational Structure (2013)

Goal Implementation Teams

Sustainable Fisheries

Ches. Bay Stock Assessment Committee

Maryland and Virginia Interagency Oyster Teams

Invasive Catfish Workgroup

Protect & Restore Vital Habitats

Fish Passage Workgroup

Stream Health Workgroup

Submerged Aquatic Vegetation Workgroup

Wetland Workgroup

Protect & Restore Water Quality

Agriculture Workgroup

Forestry Workgroup

Land Use Workgroup

Urban Stormwater Workgroup

Wastewater Treatment Workgroup

Watershed Technical Workgroup

Milestone Workgroup

Trading and Offsets Workgroup

BMP Verification Committee

Maintain Healthy Watersheds

Watershed Health Workgroup

Communications Workgroup

Foster Chesapeake Stewardship

Chesapeake Conservation Corps Action Team

Education Workgroup

Public Access Planning Action Team

Land Conservation Priorities Action Team

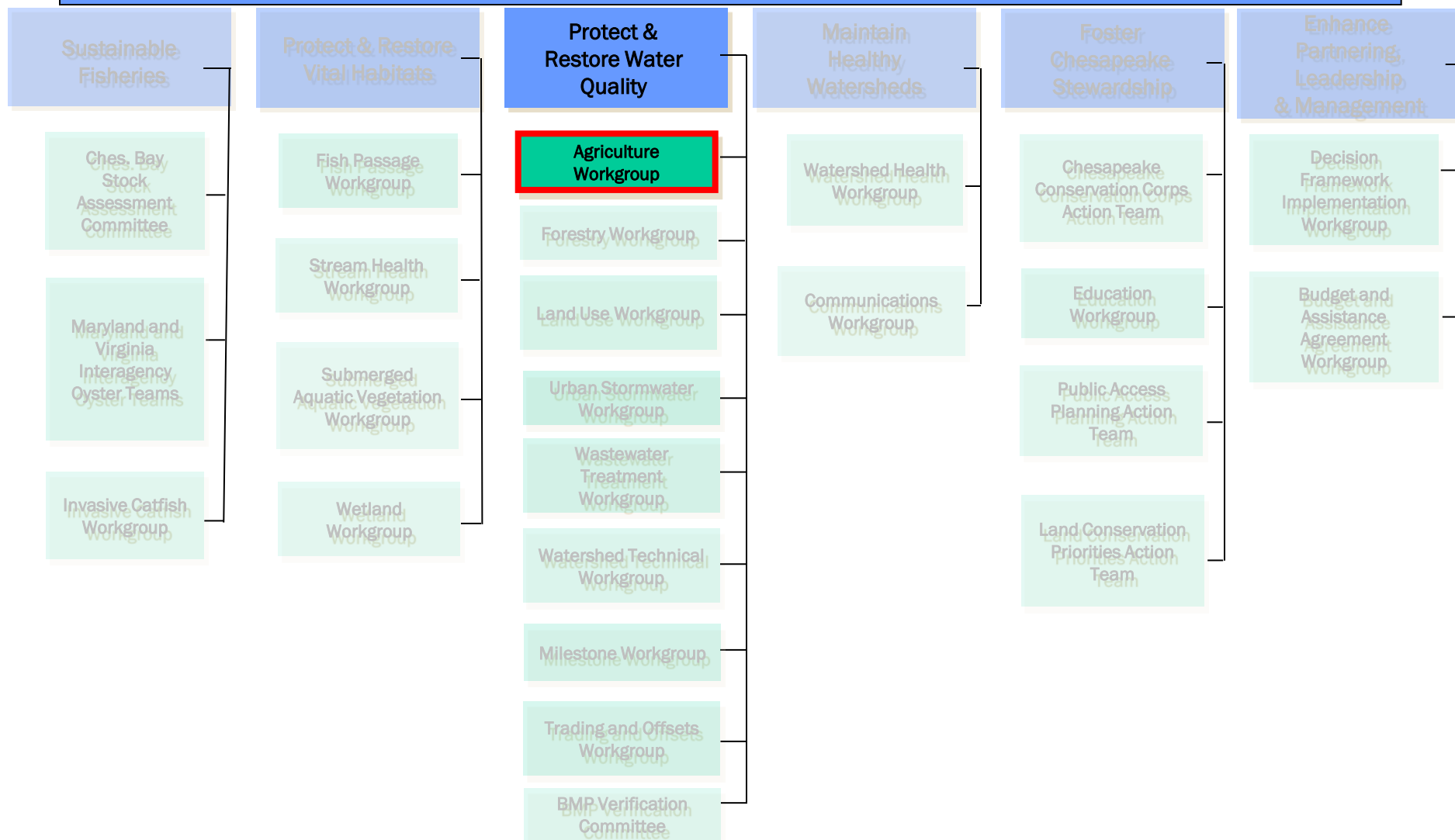
Enhance Partnering, Leadership & Management

Decision Framework Implementation Workgroup

Budget and Assistance Agreement Workgroup

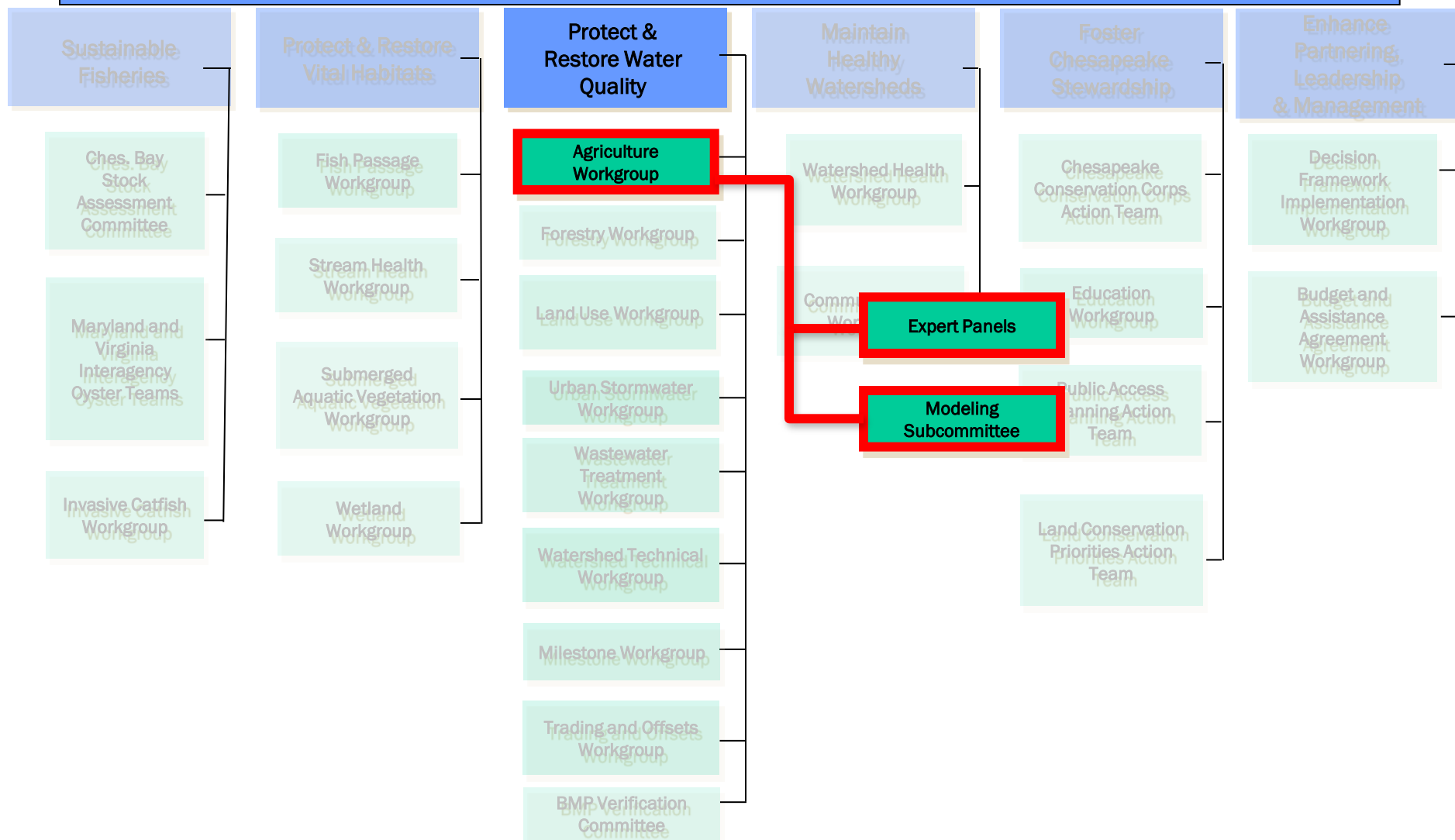
Organizational Structure (2013)

Goal Implementation Teams



Organizational Structure (2013)

Goal Implementation Teams (GITs)





Expert Review Panels: Planned and Active

Agriculture

- ✓ Nutrient Management
- ✓ Poultry Litter
- ✓ Conservation Tillage
- ✓ Cover Crop Panel
- Manure Treatment Technologies
- ⌘ Animal Waste Storage Systems
- ⌘ Manure Injection/Incorporation
- ⌘ Cropland Irrigation Management

Urban

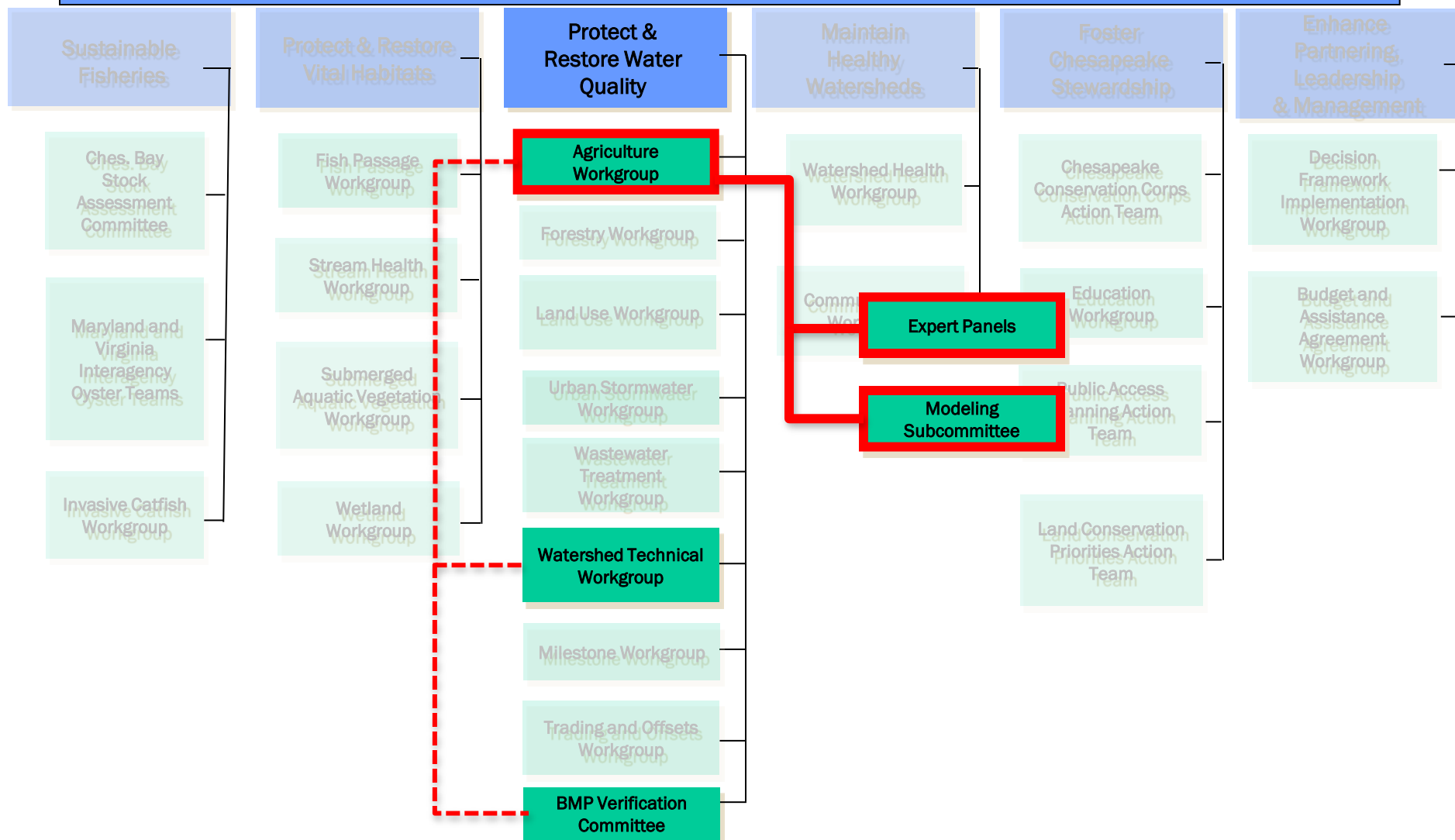
- ⌘ Urban Retrofits
- ⌘ Performance Based Management
- ⌘ Stream Restoration
- ⌘ LID and Runoff Reduction
- ⌘ Urban Fertilizer Management
- ⌘ Erosion and Sediment Control
- ⌘ Illicit Discharge Elimination
- ⌘ Impervious Disconnect
- ⌘ Floating Wetlands
- ⌘ MS4 Minimum Management Measures

Forestry

- ⌘ Riparian Buffers
- ⌘ Urban Tree Planting
- ⌘ Forest Management
- ⌘ Urban Filter Strips and Upgraded Stream Buffers

Organizational Structure (2013)

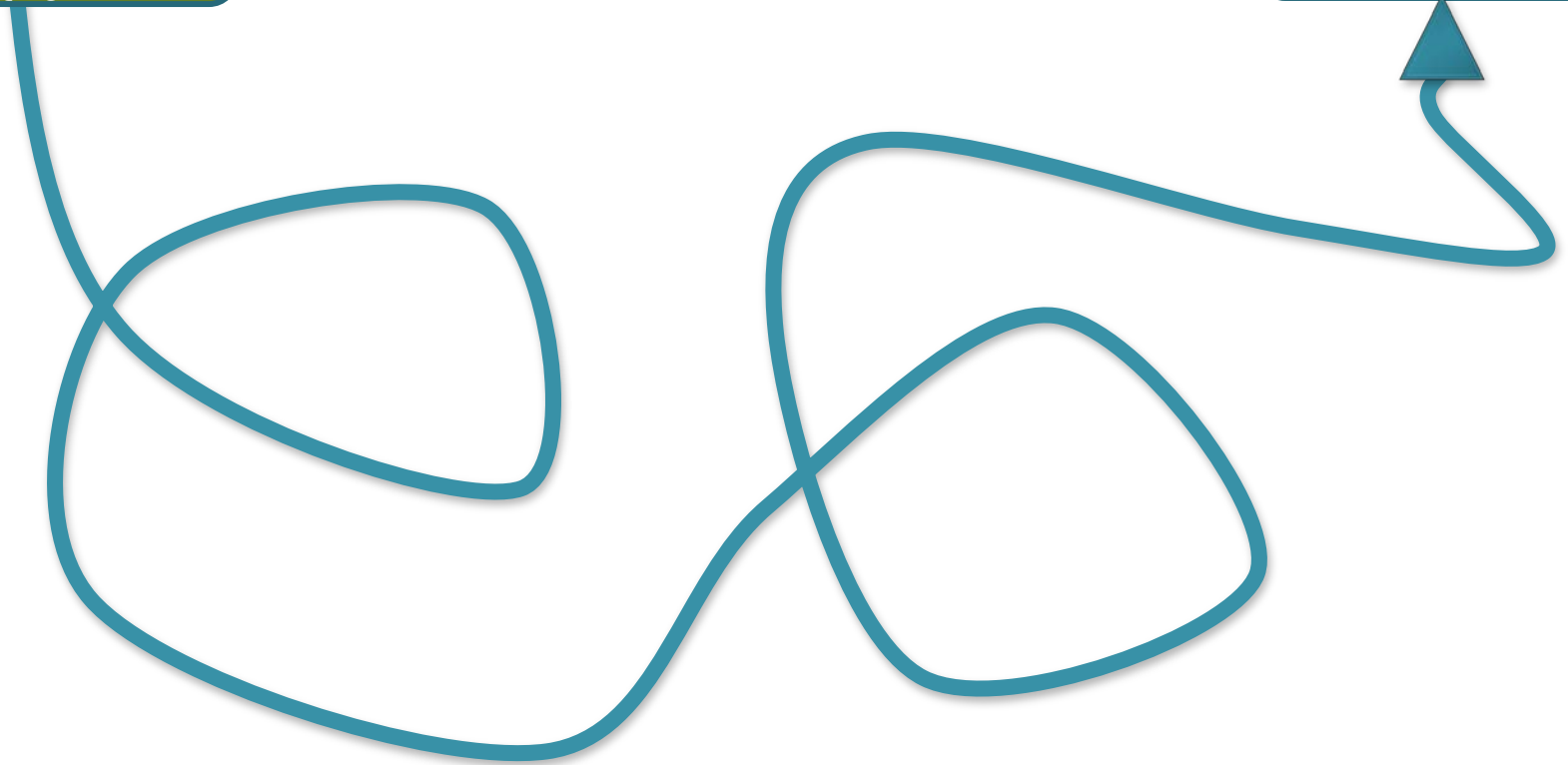
Goal Implementation Teams (GITs)



Protocol for Adding/Modifying BMPs

New/Revised BMP
Proposed by
Partner

Watershed
Model





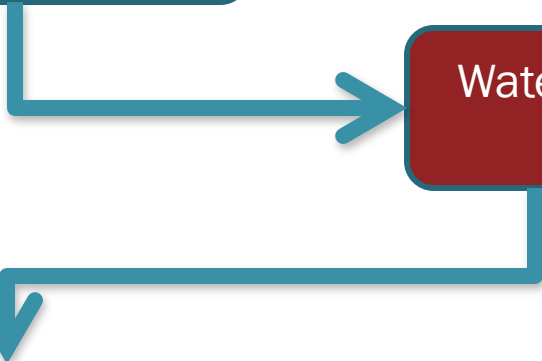
Protocol for Adding/Modifying BMPs

New/Revised BMP
Proposed by
Partner

Watershed
Model

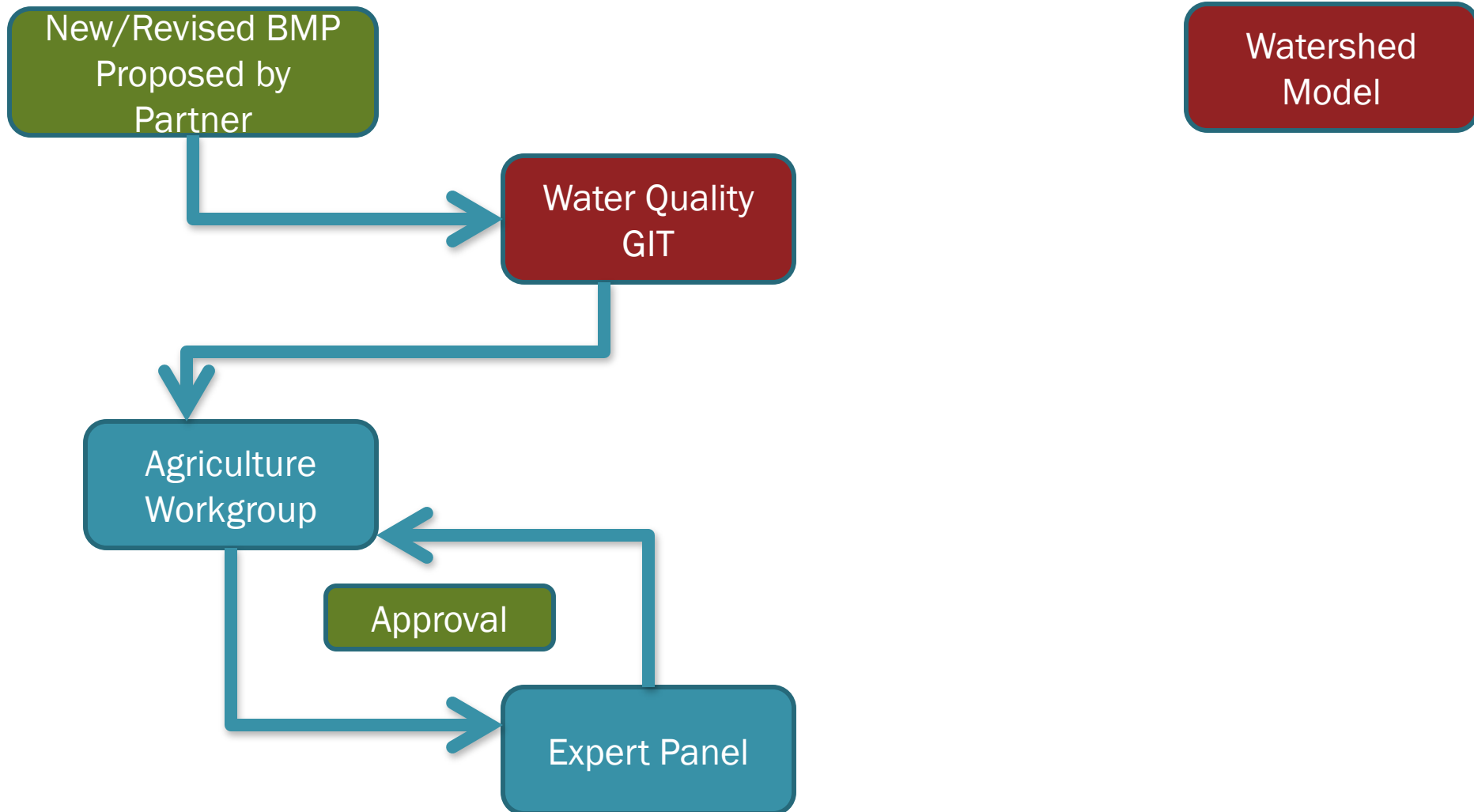
Water Quality
GIT

Agriculture
Workgroup

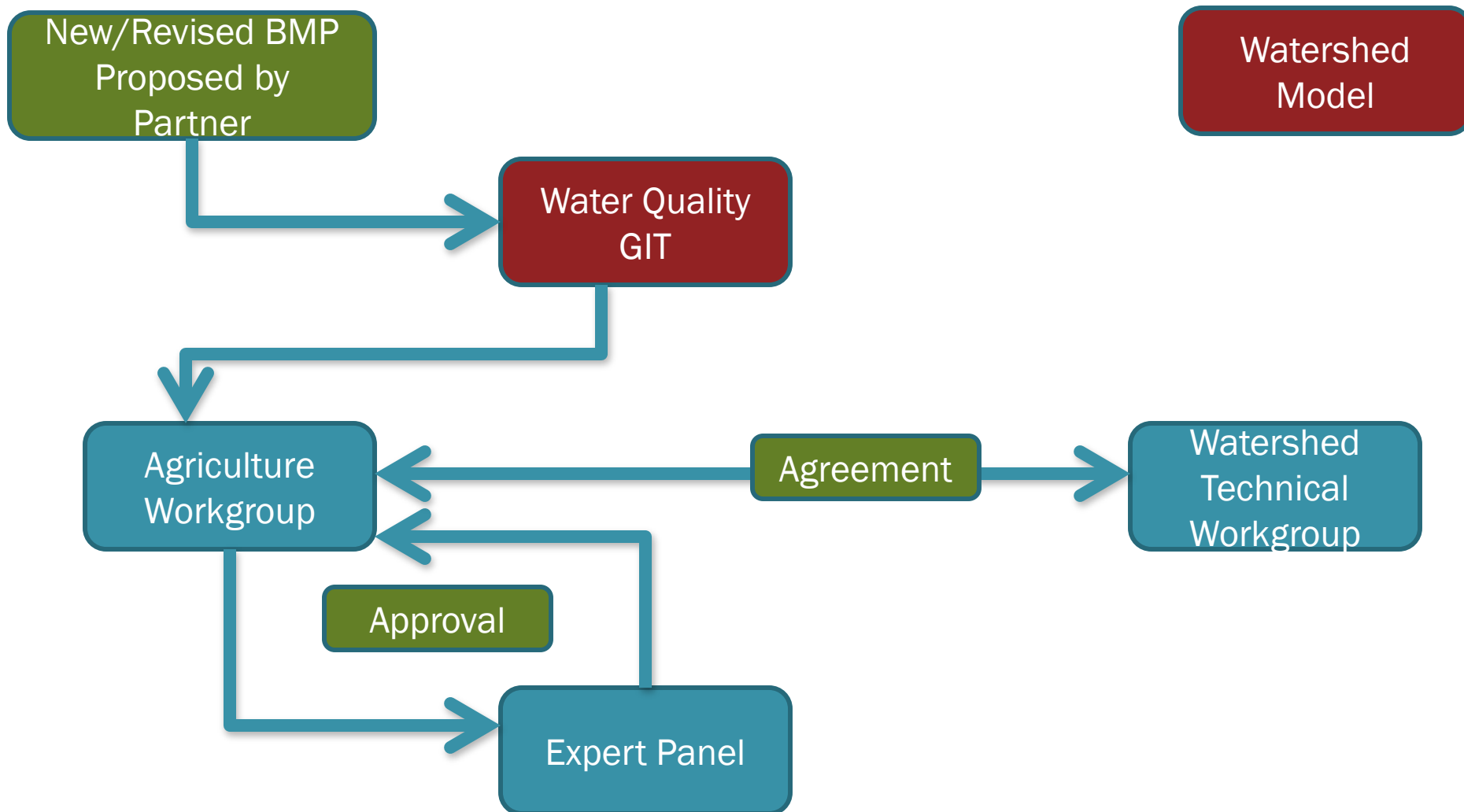




Protocol for Adding/Modifying BMPs

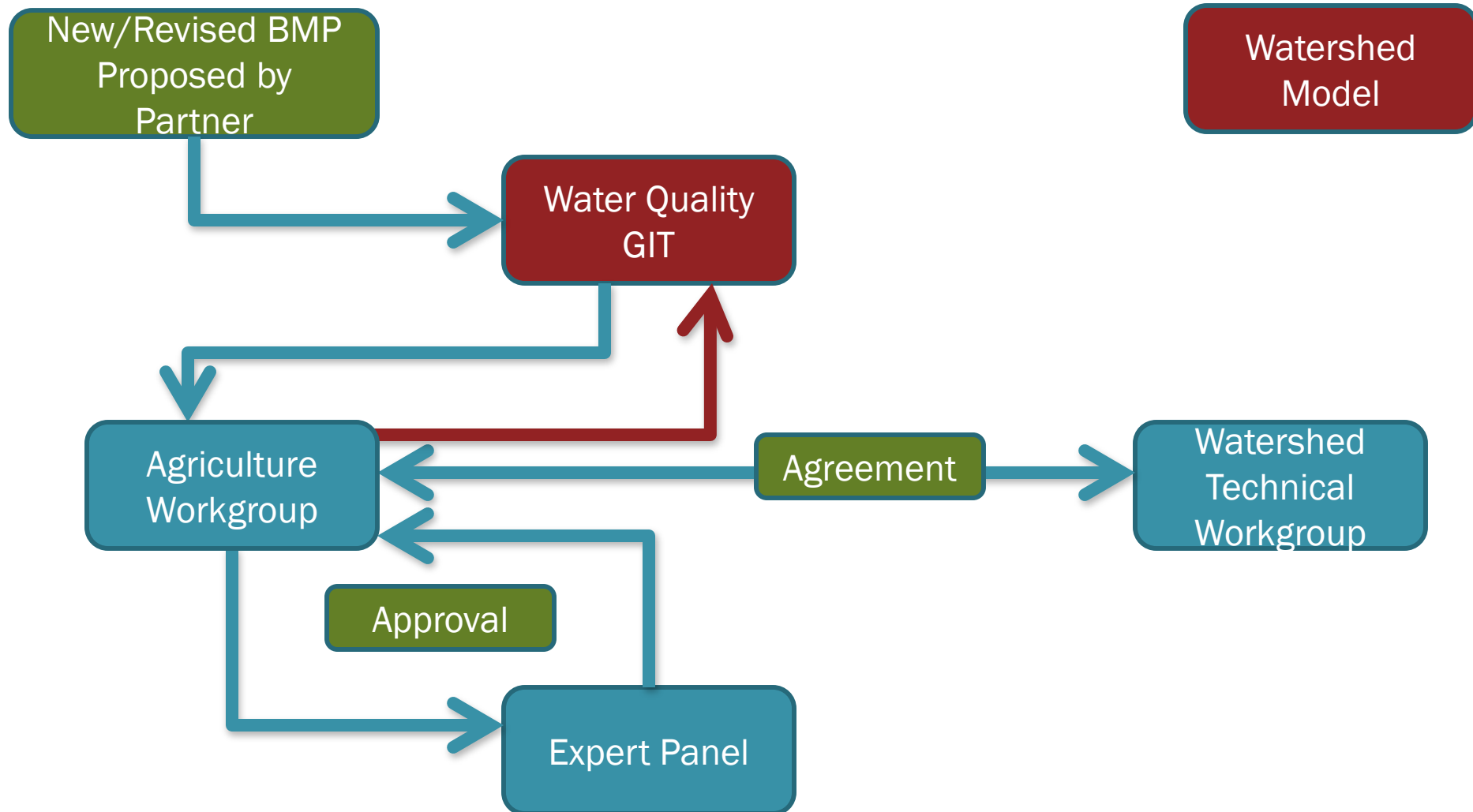


Protocol for Adding/Modifying BMPs

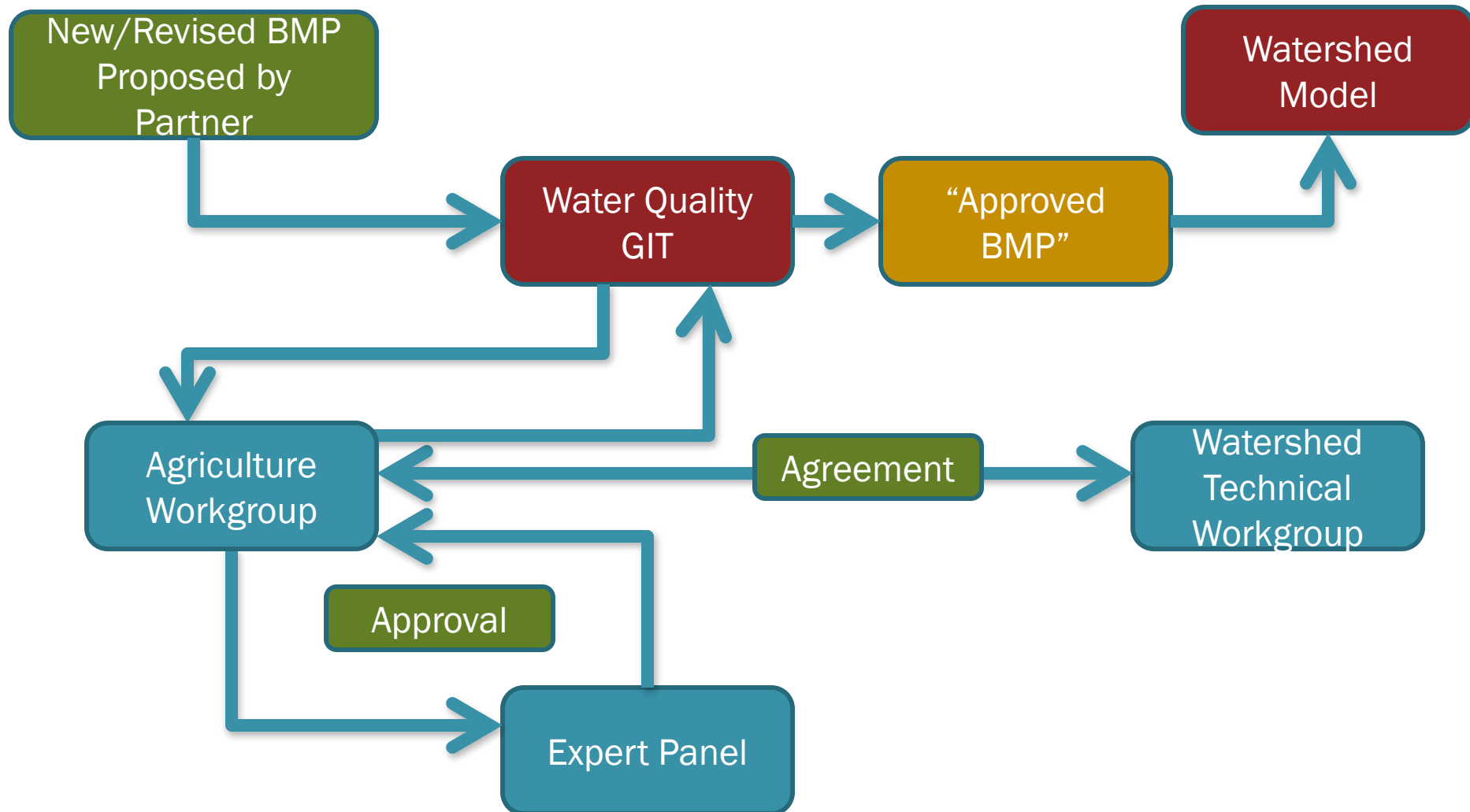




Protocol for Adding/Modifying BMPs



Protocol for Adding/Modifying BMPs



QUESTIONS ?



Chesapeake Bay Program
A Watershed Partnership