

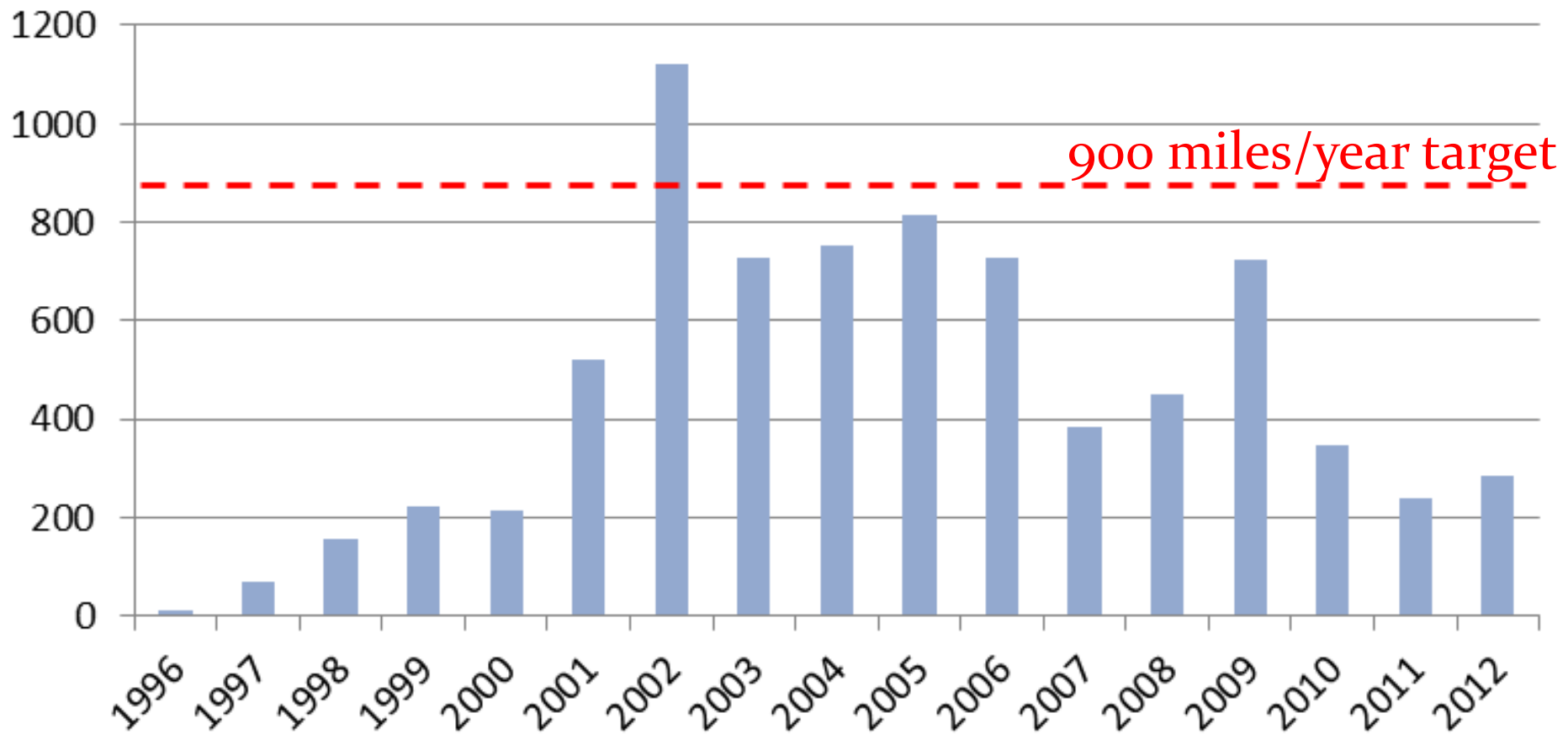
Status Paper on Forest Buffer Goals and Progress in the Chesapeake

CRP/CREP Forest Buffer Acres To Date (1998-2012)

State (CB only)	Total CP-22 acres
Delaware	80
Maryland	16,689
New York	8599
Pennsylvania	20,150
Virginia	14,360
West Virginia	3346
TOTAL	63,224

Past Progress – Miles Reported by States

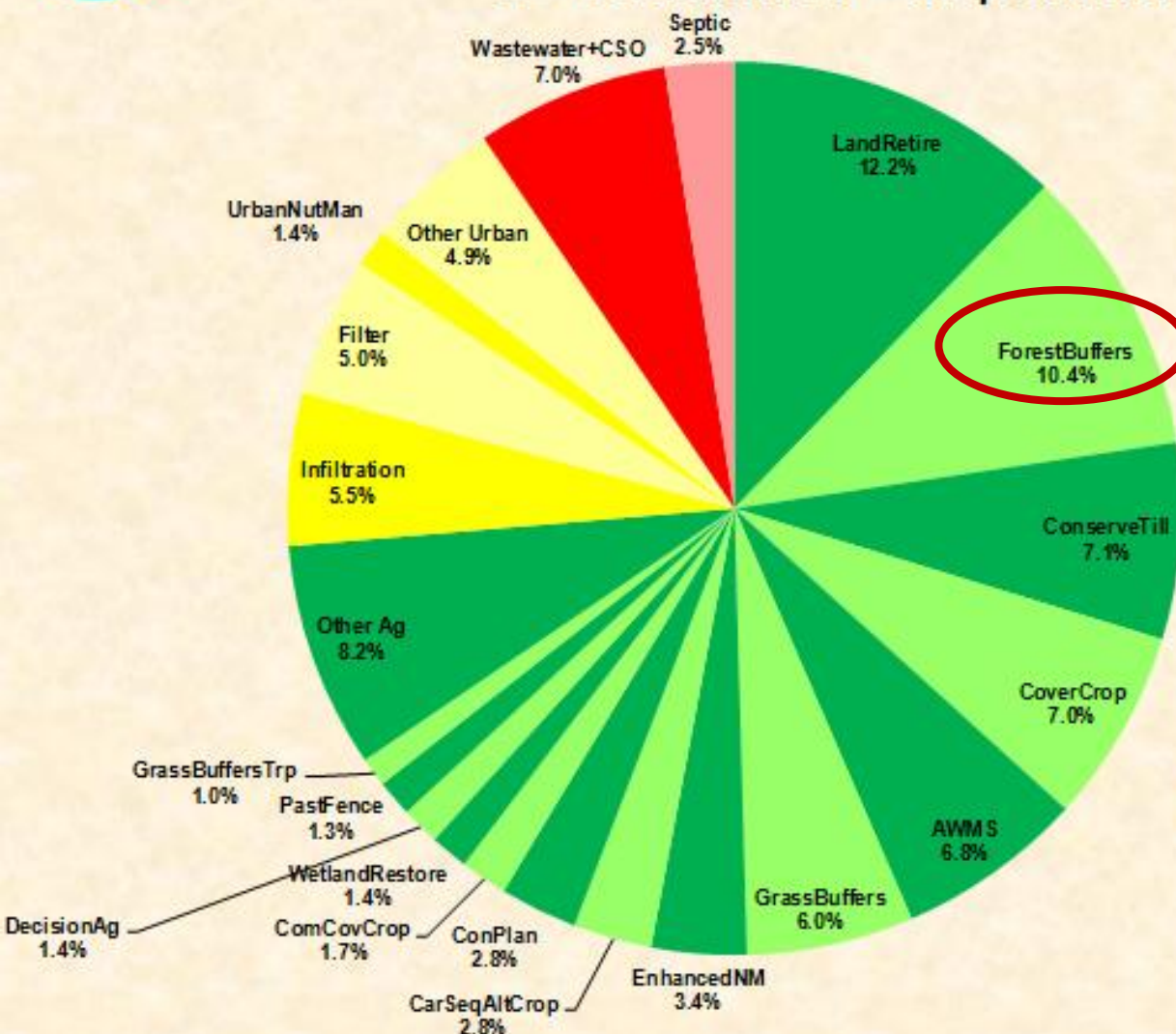
Miles of Riparian Forest Buffers Planted in Chesapeake Bay Watershed, 1996-2012



States relying on past and future acres



Nitrogen Relative Load Reductions CB Watershed – as percent



Forest Buffers rank second of all nonpoint source BMPs needed to meet TMDL targets.

- Includes both past CP-22 acres and planned 2013-2025

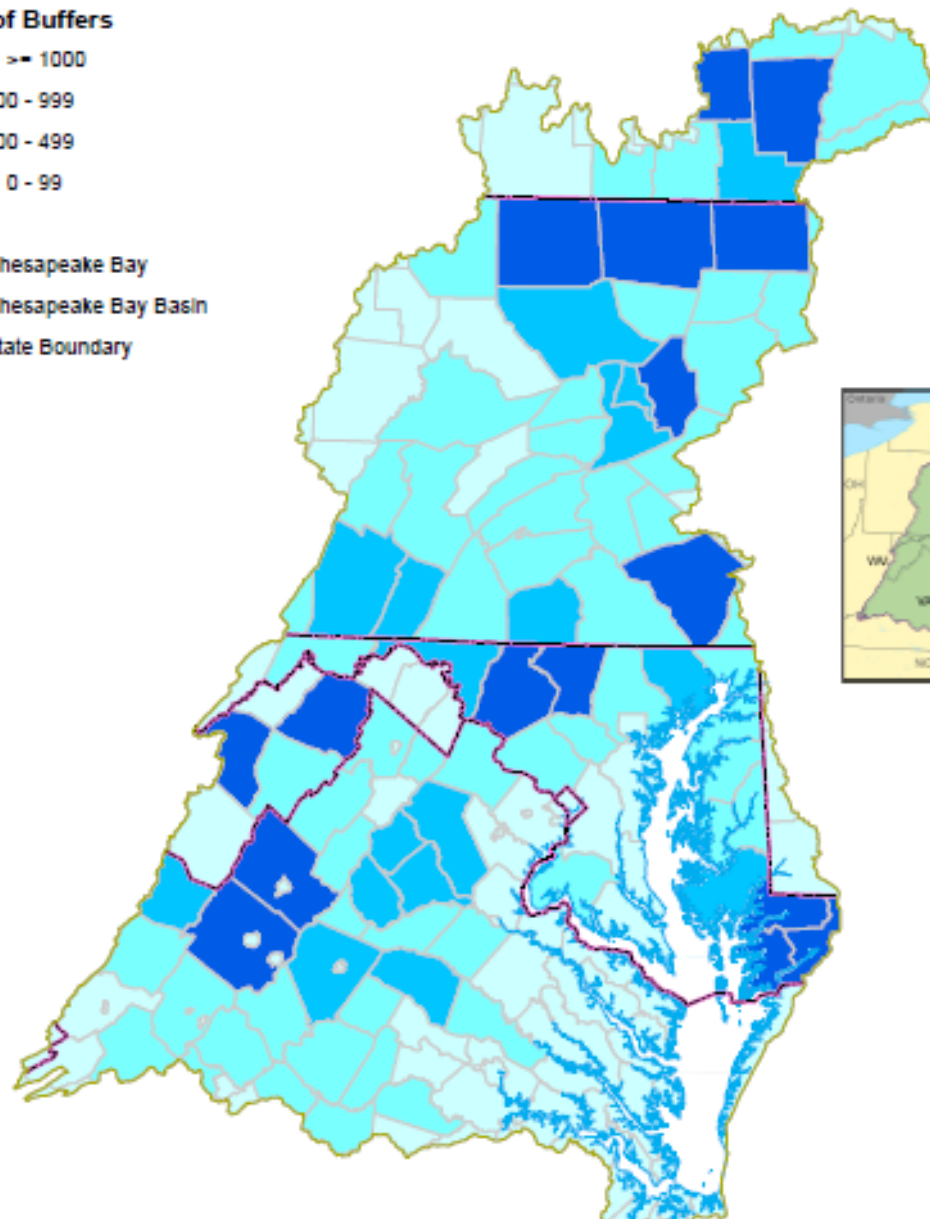
Each slice represents the percent of the total load reduction attributable to planned implementation levels for that BMP.

Acres of Forest Buffers Restored Through CRP/CREP in the Chesapeake Bay Basin, by County (1998-2012)



* 25% of the counties achieved 75% of the buffer acres restored

Acres of Buffers



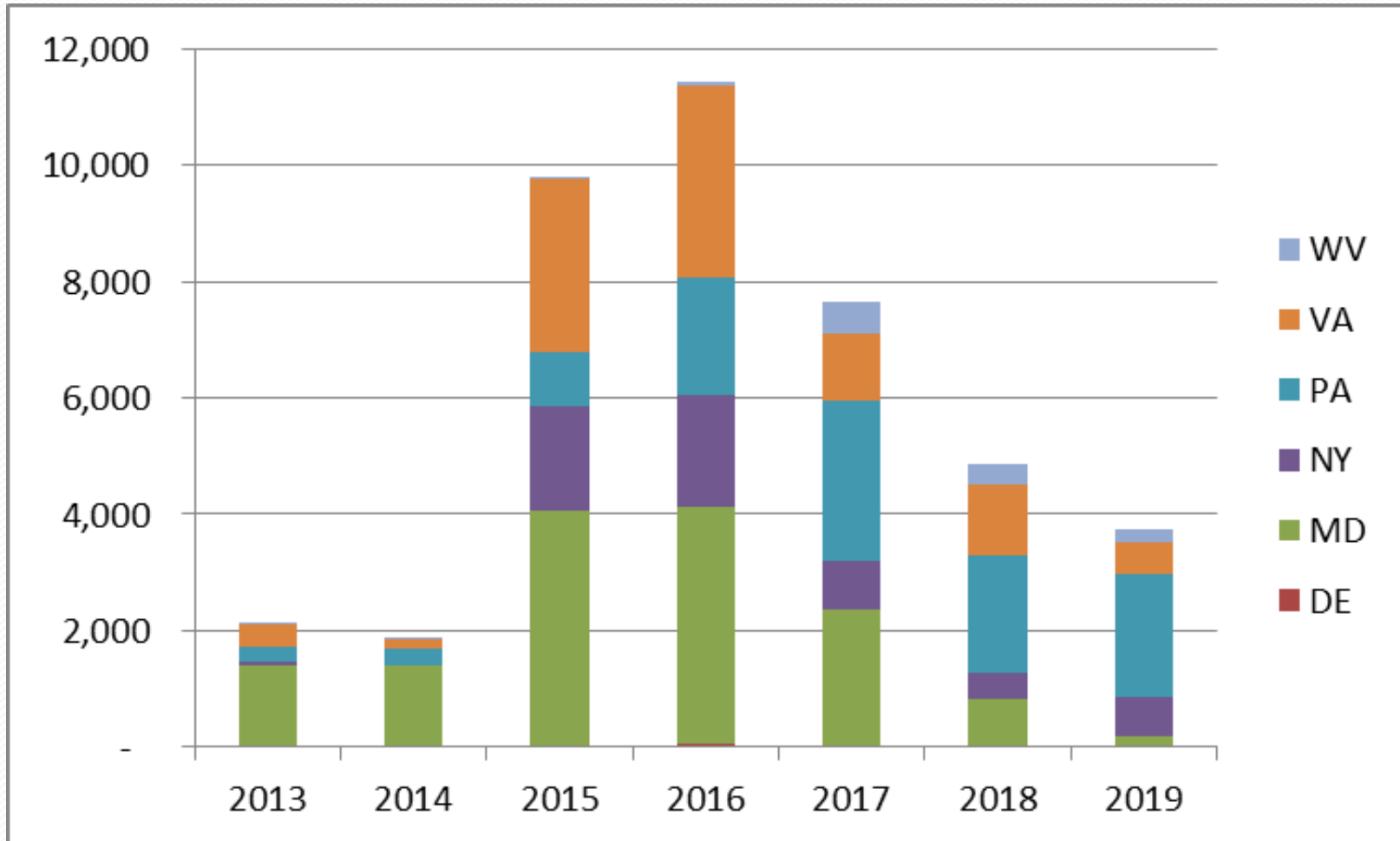
TMDL/WIP targets for forest buffers

	<u>Total New</u> <u>Acres Needed</u> 2012-2025	Acres/year needed	2012 CP-22 acres
Delaware	4790	370	0
Maryland	1190	90	264
New York	6180	475	91
Pennsylvania	89,630	6895	493
Virginia	80,820	6215	683
West Virginia	3250	250	249
TOTAL	185,860	14,295	1780

14295 acres/year = 1191 miles/year of 100 ft wide buffers

Emerging Issue: Expiring Contracts

CP-22 Acres expiring 2013-2019



Data Source: USDA Farm Services Agency

The Pennsylvania Example

- Partnership - provides coordination and programmatic guidance at the state level with focus of forest buffers
- State cost-share dollars are only available to match forest buffers
- A forest buffer can improve the ranking of other conservation practices (e.g., EQIP practices)
- A voucher system (cash payment) -a landowner agrees to put in a riparian forest buffer and vouchers are used to pay for the landowner's share of a conservation practice.
- Additional outreach and technical assistance
 - *Displays, paid and earned advertising, 1-800 telephone number, information products, direct mailing of postcards
- Improved survival and policies around post-planting care

Summary

- Lots of progress on forest buffers
- But much more is needed
- CREP is best tool
- Watershed Implementation Plans
- Many contracted acres are due to expire
- Pennsylvania example

Discussion/Next Step

- Draft Status Paper out in November
- Follow-up will need leadership involvement
- Ideas:
 - Task force to develop strategy
 - Leadership summit