

Verification of Urban BMPs



**Why do we care
about verification ?**

**Because Rich Batiuk
Does!**



R.B. 1972

Except for a few cases, Urban BMPs are Not Perpetual !



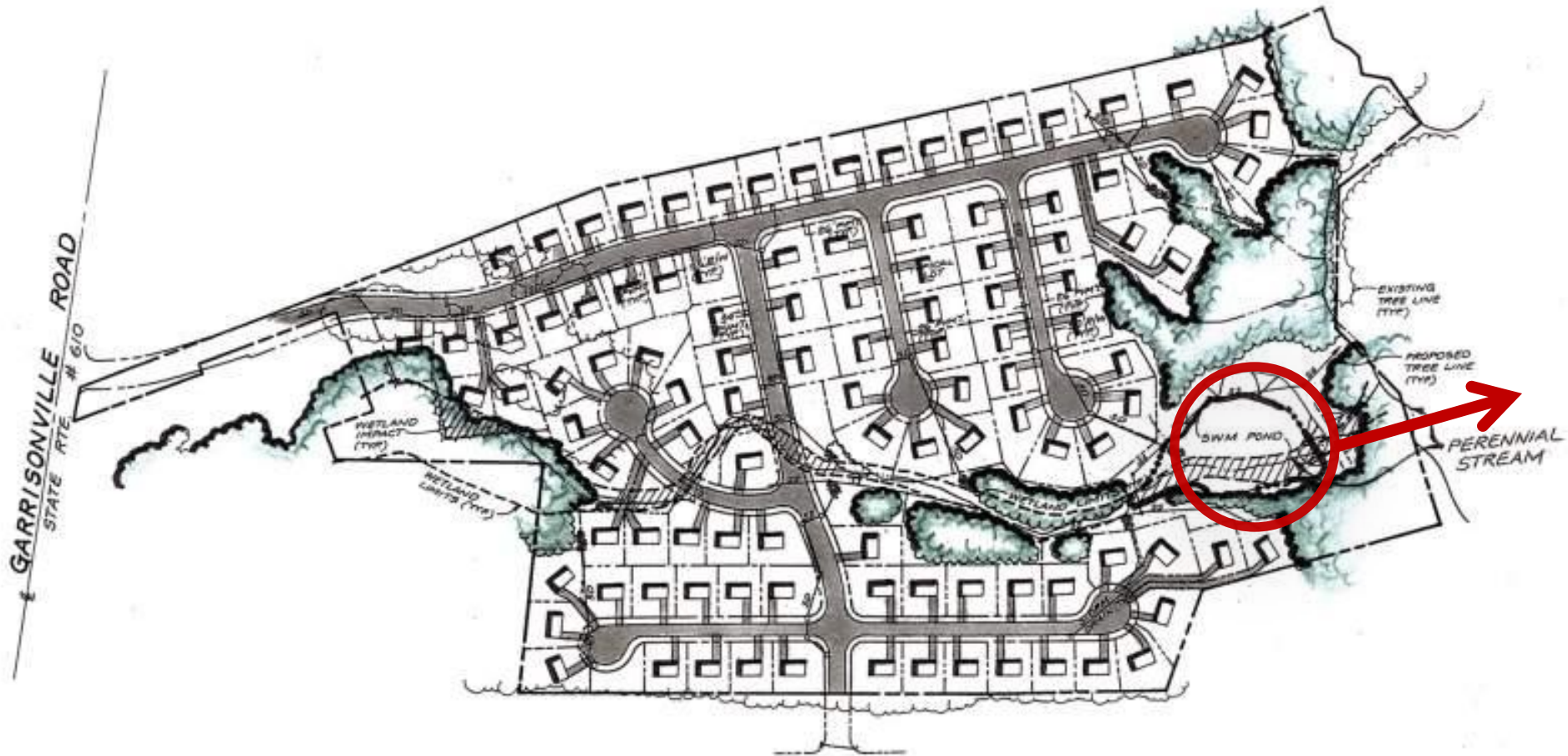
Source: Kenneth Wright, WWE



BMP
Performance
Is
Inextricably
Linked
To
Maintenance
(which is not very
sexy)

Our Old Approach to Urban BMPs

One big pond



1-430264312 - CWP Sample Plans, CAD Library & Nutrient Trading Framework, Stormwater Analysis/Pediment Handouts (Williamsburg 4312, ESD Sample Plans.doc)

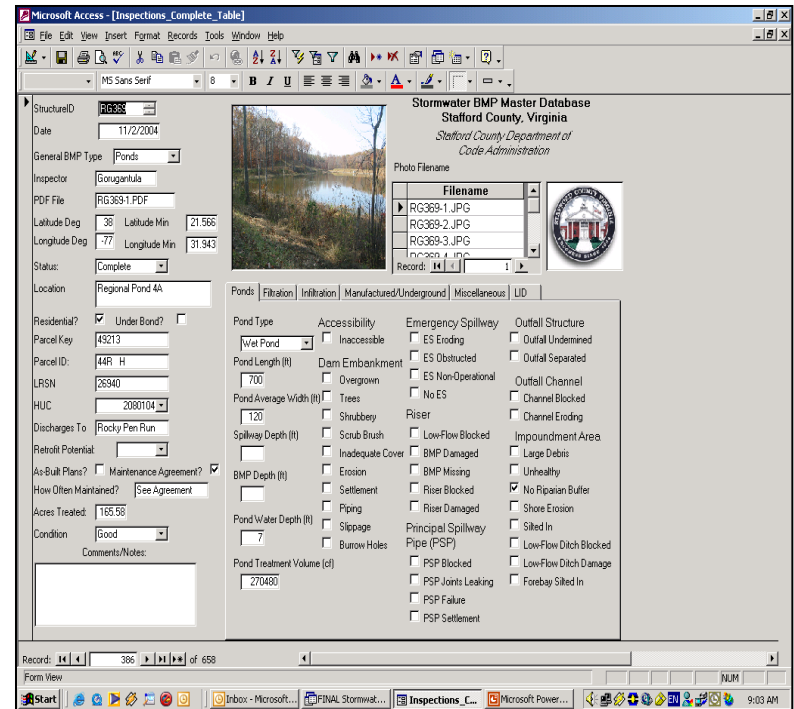
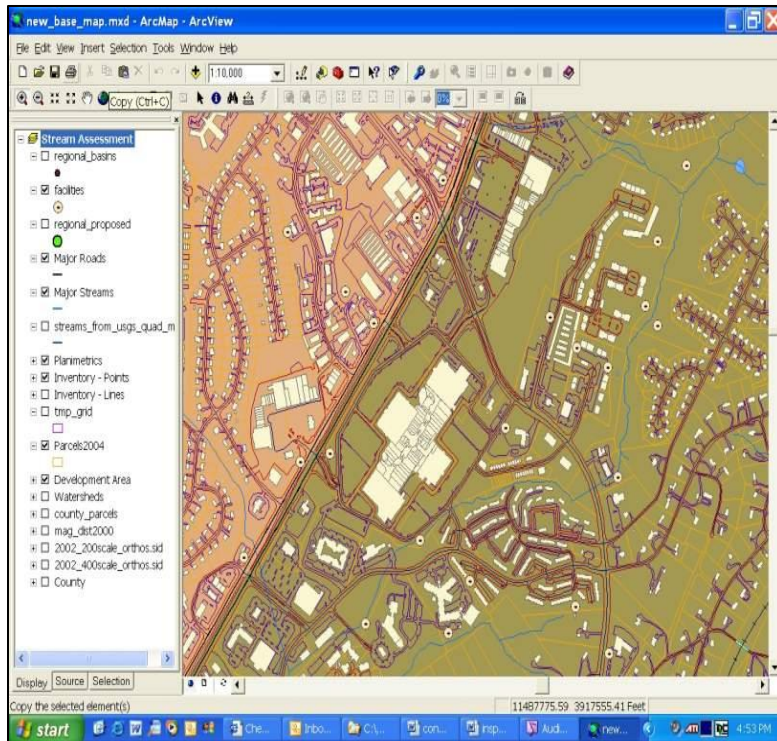




Visual inspections needed to confirm BMP performance



A lot of BMP information to track



How to deal with our Legacy BMPs ?

Thirty Years of BMPs. The BMP Inventory in a Maryland County (2006)			
<i>Potentially High Performers</i>		<i>Known Low Performers</i>	
Bioretention/Dry Swales	49	Underground Detention	270
Sand Filters	279	Dry Ponds	528
Wet pond	212	Oil Grit Separators	805
Pond Wetland	98	Proprietary Practices	239
Infiltration Basin	58	Flow Splitter	321
Infiltration Trench	459	Other (plunge pools)	30
Grand Total			3350

Studies show some of the old BMPs are not working



A few of our new BMPs don't perform well, either



Some Urban BMPs have unique verification issues



We have an existing system in place to report, track and verify urban BMPs, but it needs some tweaks to assure actual BMP performance



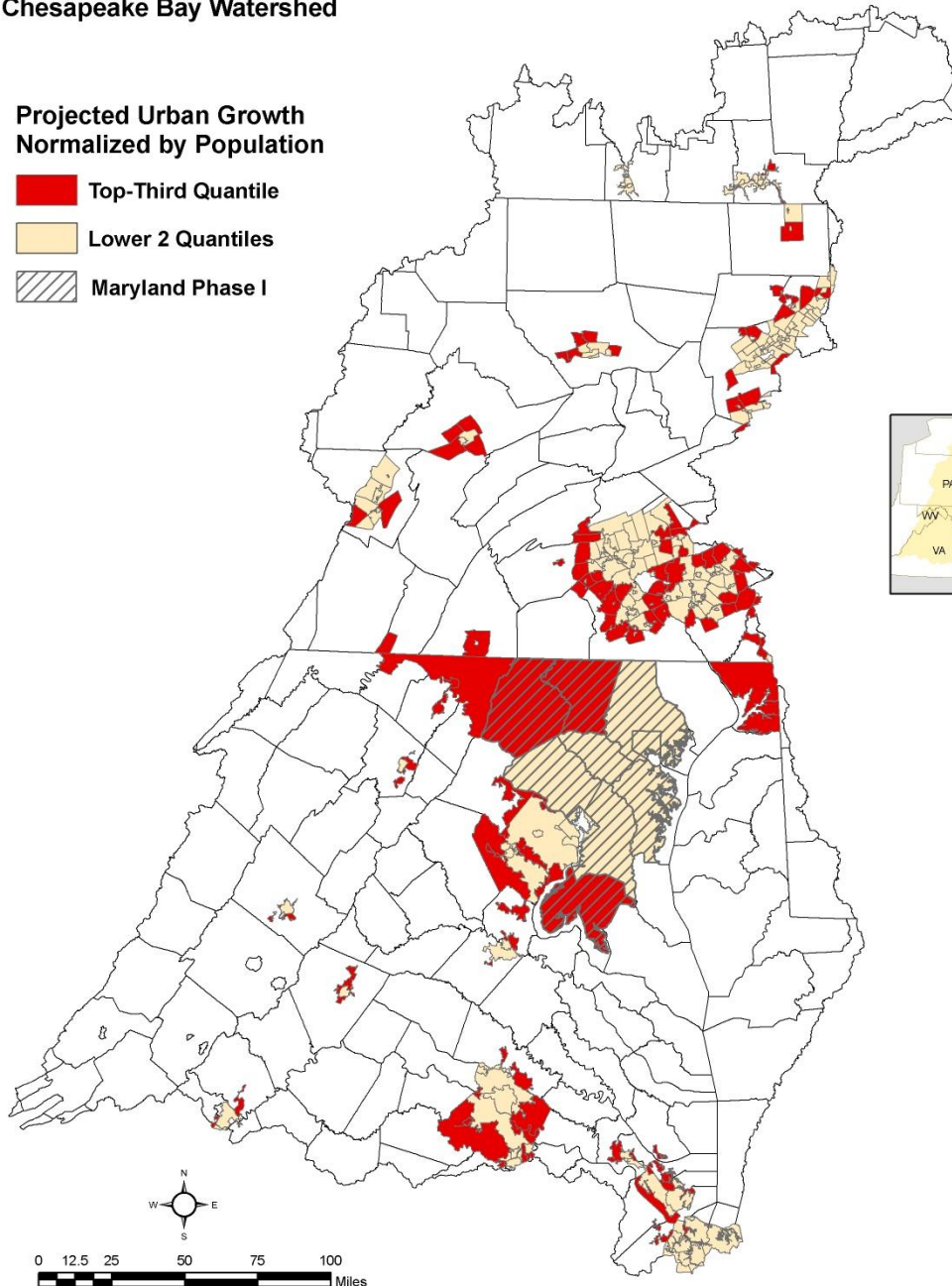
Projected Fastest Growing MS4 Areas: 2000 - 2030



Chesapeake Bay Watershed

Projected Urban Growth
Normalized by Population

- Top-Third Quantile
- Lower 2 Quantiles
- Maryland Phase I



Ability to Verify
is Often Linked to
Whether a
community has a
MS4 permit or
not



Progress Made by Urban Sector in BMP Verification

First Draft of Principles
and Protocols in December

Second Draft in March

Third and Fourth Draft in April

Urban BMP Verification
Committee Established In May