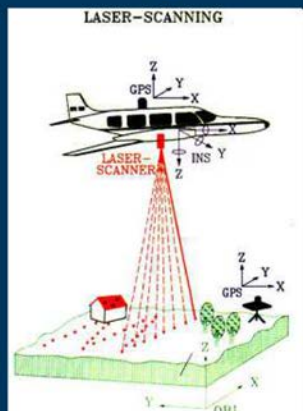


Data Opportunities

High Resolution
Topography Data Derived
from Light Detection And
Ranging (LIDAR) Remote
Sensing Data



Flood and Gutelius 1997
J. of Photogrammetry &
Remote Sensing



BMP Implementation Challenge: Where, What, How Much?

Conceptual Approach:



I. Identify
Restoration
Opportunities



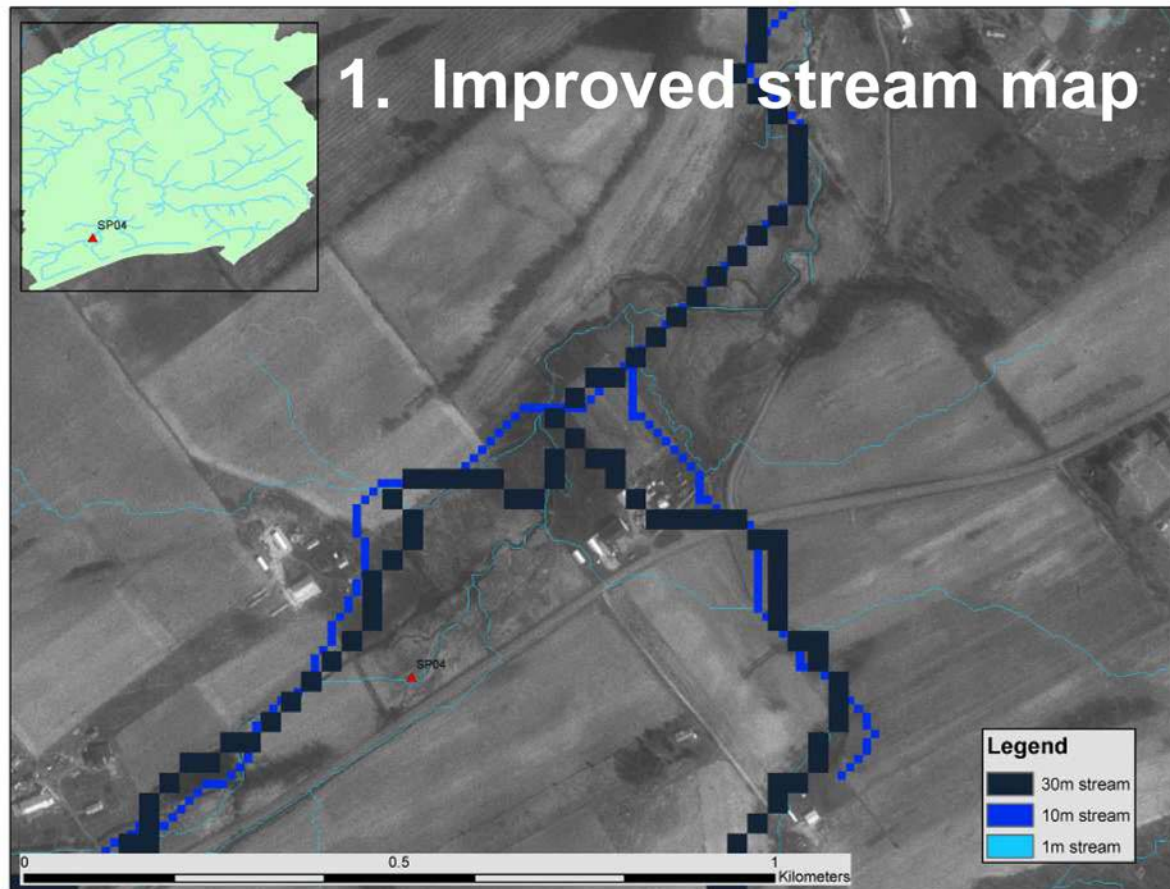
II. Identify
Contributing
Nutrient Sources

III. Incorporate
Or Integrate
other
Objectives or
Constraints

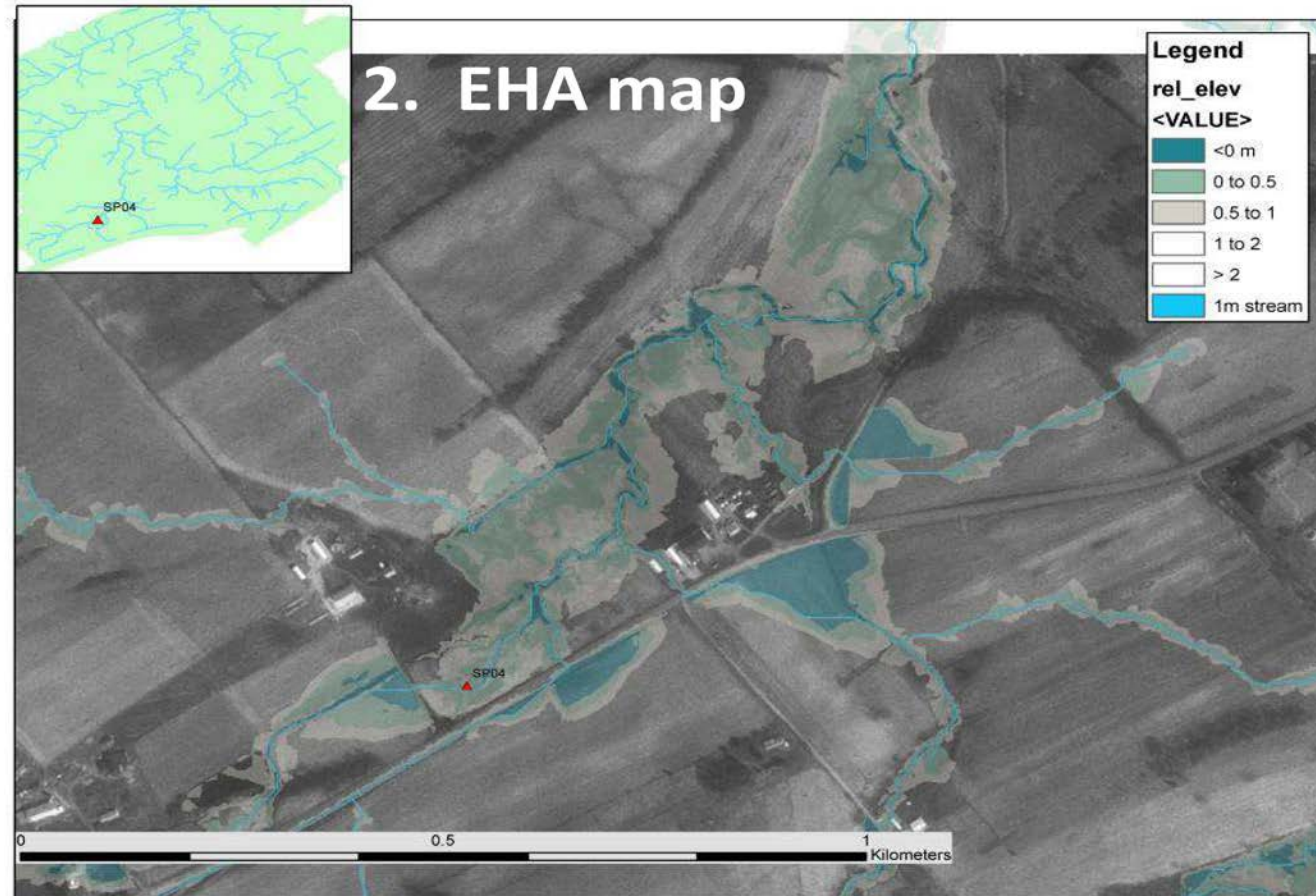


Results: Rank
opportunities to
maximize return
on \$\$ invested to
install bmp's and
provide services.

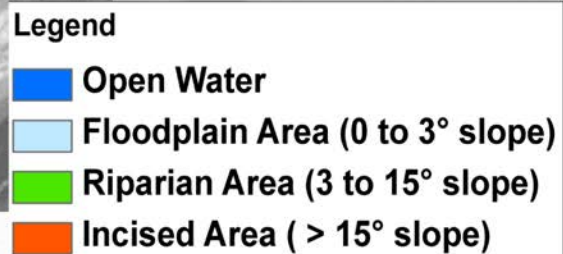
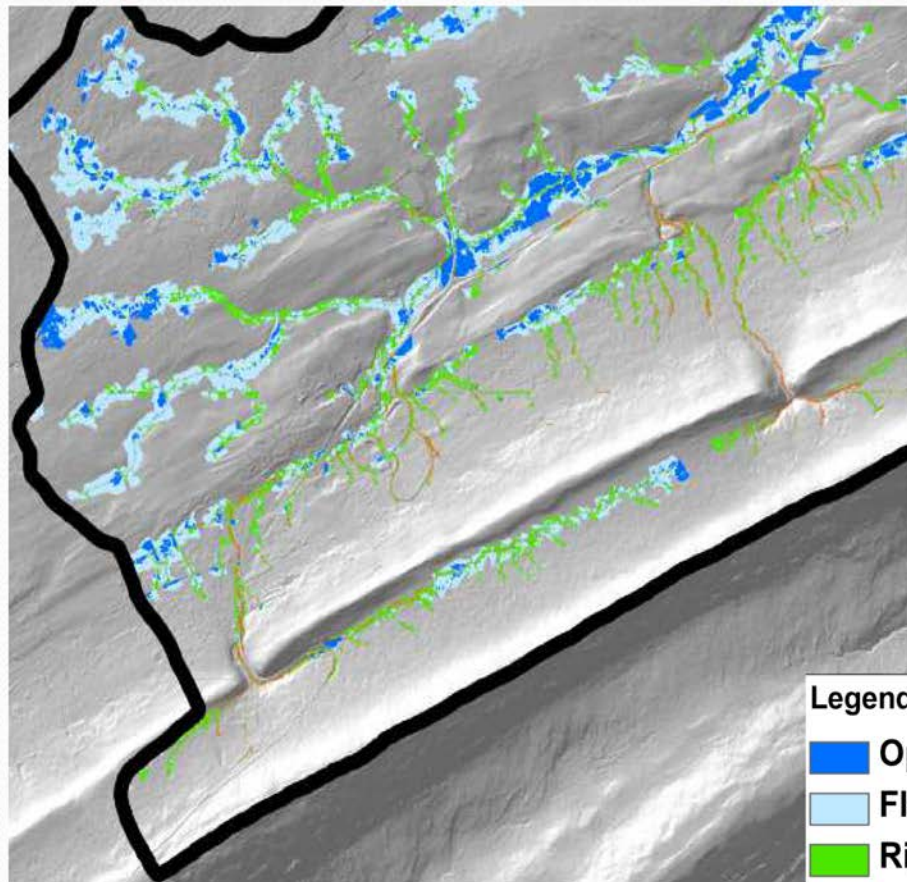
1. Improved stream map



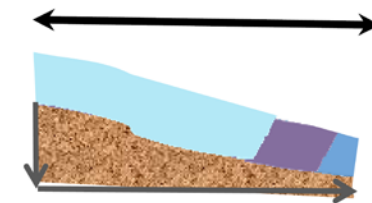
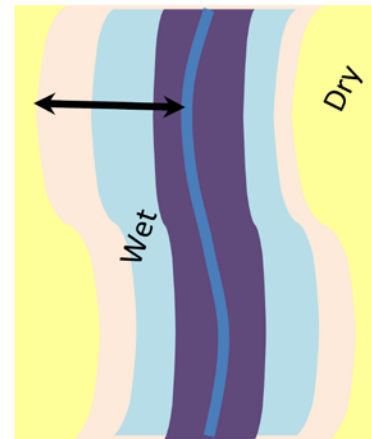
2. EHA map



3. EHA Function



3. Riparian/Floodplain Slope



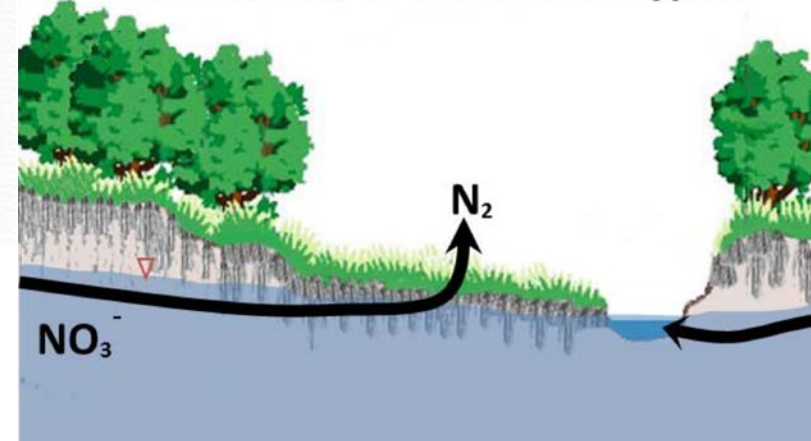
$$\text{Slope} = \Delta \text{Elevation} / \Delta \text{Distance}$$



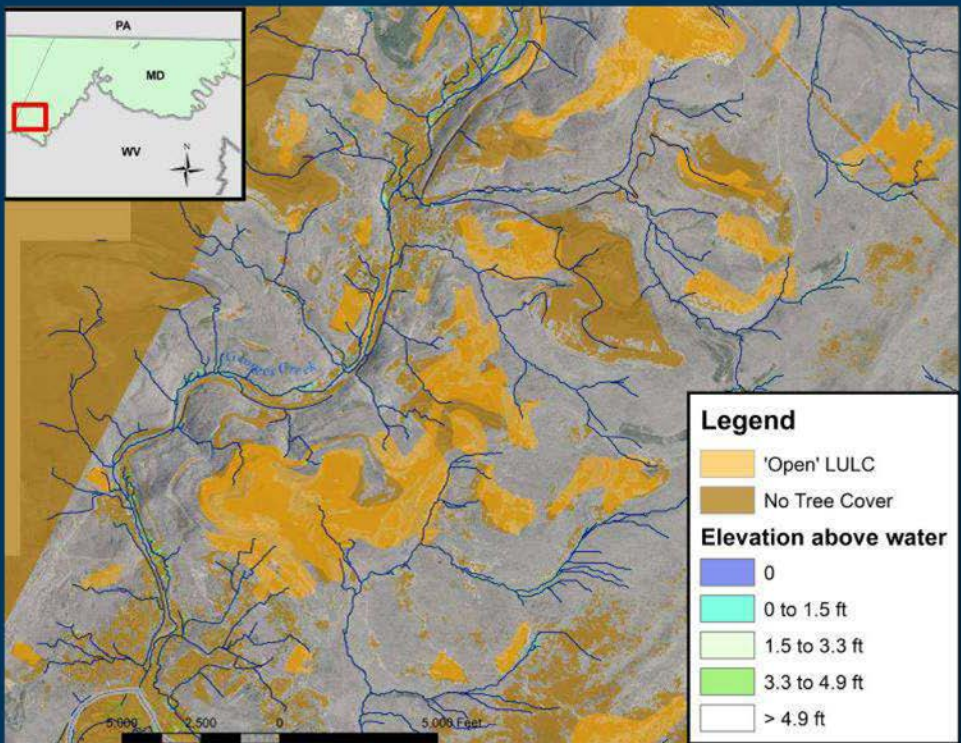
Legend

- Open Water
- Floodplain Area (0 to 3° slope)
- Riparian Area (3 to 15° slope)
- Incised Area (> 15° slope)

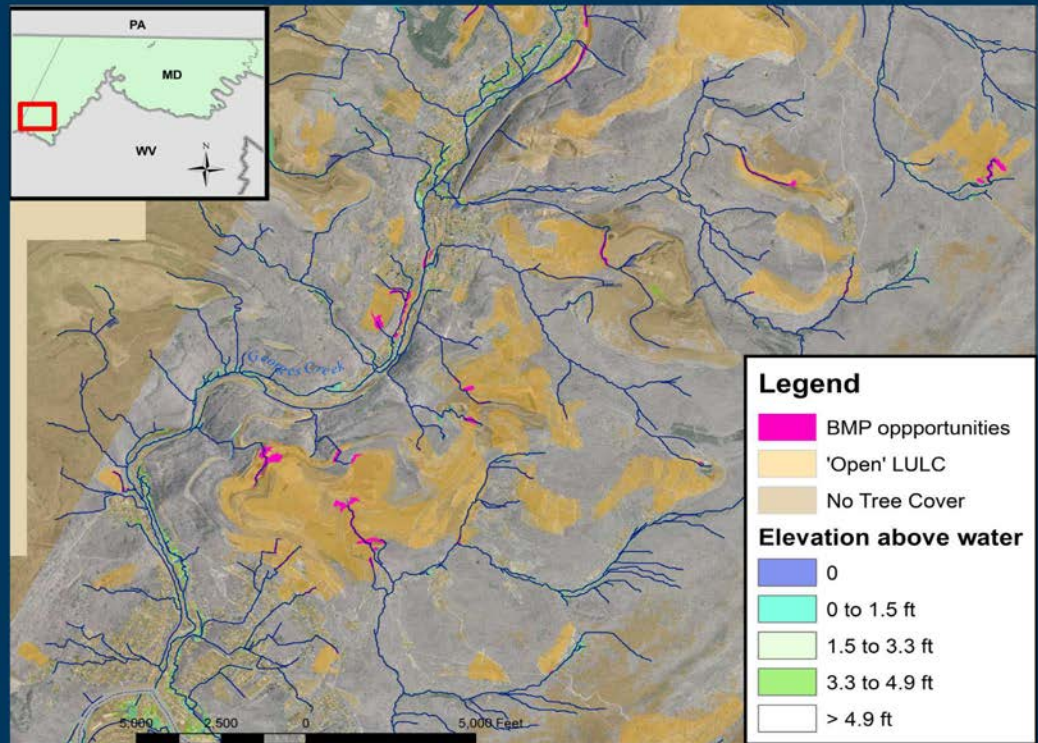
Denitrification/Groundwater Bypass



Identification of Potential BMP Sites

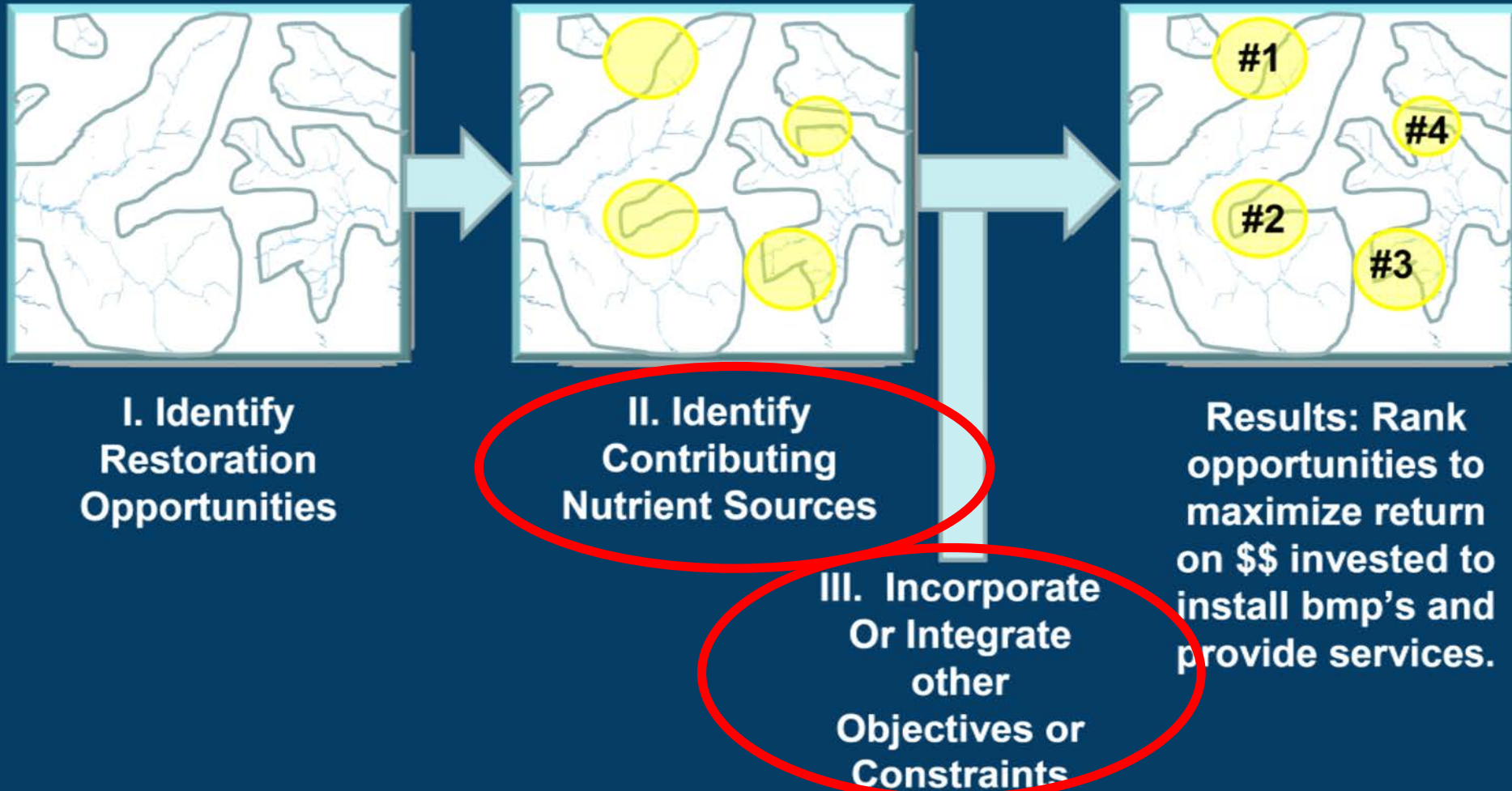


Identification of Potential BMP Sites



BMP Implementation Challenge: Where, What, How Much?

Conceptual Approach:



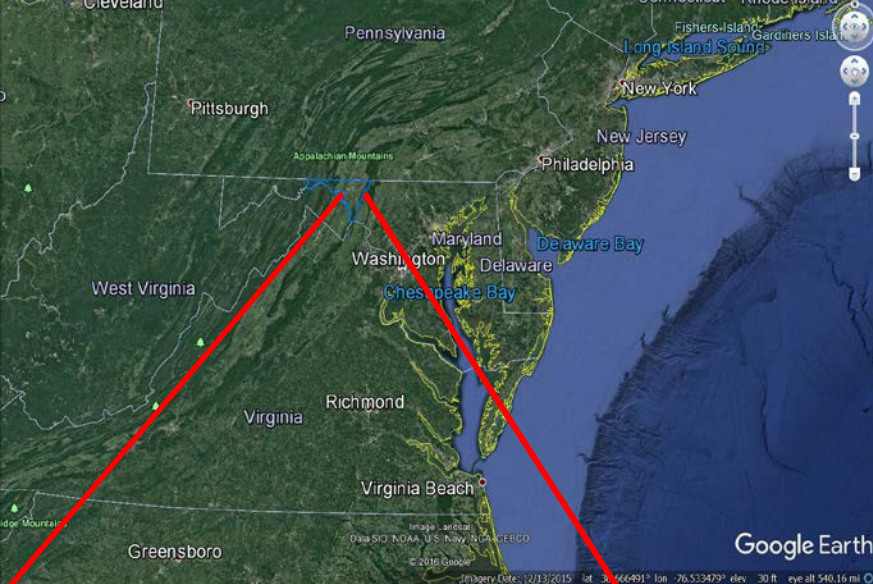
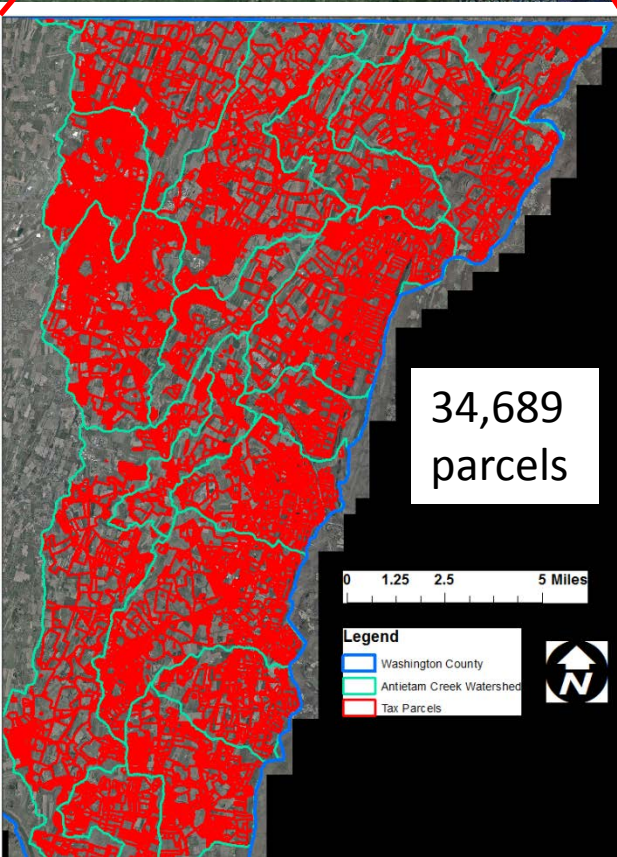
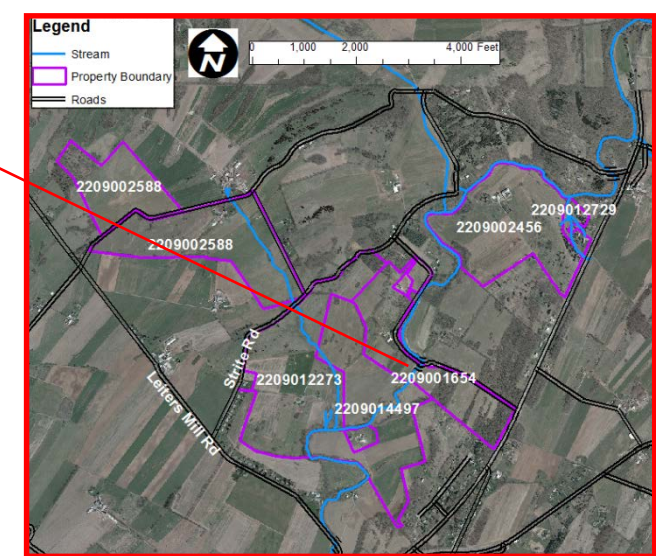


Table					
Property Boundary					
FID	Shape	ACCTID	JURSCODE	SOATWEBADR	
0	Polygon	2210013062	WASH	http://sdatcert3.resiusa.org/rp_rewrite/details.aspx?County=22&SearchType=ACCT&District=10&AccountNo=2210013062	
1	Polygon	2209001654	WASH	http://sdatcert3.resiusa.org/rp_rewrite/details.aspx?County=22&SearchType=ACCT&District=09&AccountNo=2209001654	
2	Polygon	2209012729	WASH	http://sdatcert3.resiusa.org/rp_rewrite/details.aspx?County=22&SearchType=ACCT&District=09&AccountNo=2209012729	
3	Polygon	2216007994	WASH	http://sdatcert3.resiusa.org/rp_rewrite/details.aspx?County=22&SearchType=ACCT&District=16&AccountNo=2216007994	
4	Polygon	2218018810	WASH	http://sdatcert3.resiusa.org/rp_rewrite/details.aspx?County=22&SearchType=ACCT&District=18&AccountNo=2218018810	
5	Polygon	2216011886	WASH	http://sdatcert3.resiusa.org/rp_rewrite/details.aspx?County=22&SearchType=ACCT&District=16&AccountNo=2216011886	
6	Polygon	2209002588	WASH	http://sdatcert3.resiusa.org/rp_rewrite/details.aspx?County=22&SearchType=ACCT&District=09&AccountNo=2209002588	
7	Polygon	2216011894	WASH	http://sdatcert3.resiusa.org/rp_rewrite/details.aspx?County=22&SearchType=ACCT&District=16&AccountNo=2216011894	
8	Polygon	2218046512	WASH	http://sdatcert3.resiusa.org/rp_rewrite/details.aspx?County=22&SearchType=ACCT&District=18&AccountNo=2218046512	
9	Polygon	2217032739	WASH	http://sdatcert3.resiusa.org/rp_rewrite/details.aspx?County=22&SearchType=ACCT&District=17&AccountNo=2217032739	
10	Polygon	2218021889	WASH	http://sdatcert3.resiusa.org/rp_rewrite/details.aspx?County=22&SearchType=ACCT&District=18&AccountNo=2218021889	
11	Polygon	2216011444	WASH	http://sdatcert3.resiusa.org/rp_rewrite/details.aspx?County=22&SearchType=ACCT&District=16&AccountNo=2216011444	
12	Polygon	2216006181	WASH	http://sdatcert3.resiusa.org/rp_rewrite/details.aspx?County=22&SearchType=ACCT&District=16&AccountNo=2216006181	
13	Polygon	2216002321	WASH	http://sdatcert3.resiusa.org/rp_rewrite/details.aspx?County=22&SearchType=ACCT&District=16&AccountNo=2216002321	
14	Polygon	2209002456	WASH	http://sdatcert3.resiusa.org/rp_rewrite/details.aspx?County=22&SearchType=ACCT&District=09&AccountNo=2209002456	
15	Polygon	2209012273	WASH	http://sdatcert3.resiusa.org/rp_rewrite/details.aspx?County=22&SearchType=ACCT&District=09&AccountNo=2209012273	
16	Polygon	2209014497	WASH	http://sdatcert3.resiusa.org/rp_rewrite/details.aspx?County=22&SearchType=ACCT&District=09&AccountNo=2209014497	
17	Polygon	2216005894	WASH	http://sdatcert3.resiusa.org/rp_rewrite/details.aspx?County=22&SearchType=ACCT&District=16&AccountNo=2216005894	



Select by Attributes:
Ag land use,
>5 ac

Location:
w/in 200ft of stream
Intersect w/
BMP layer

