



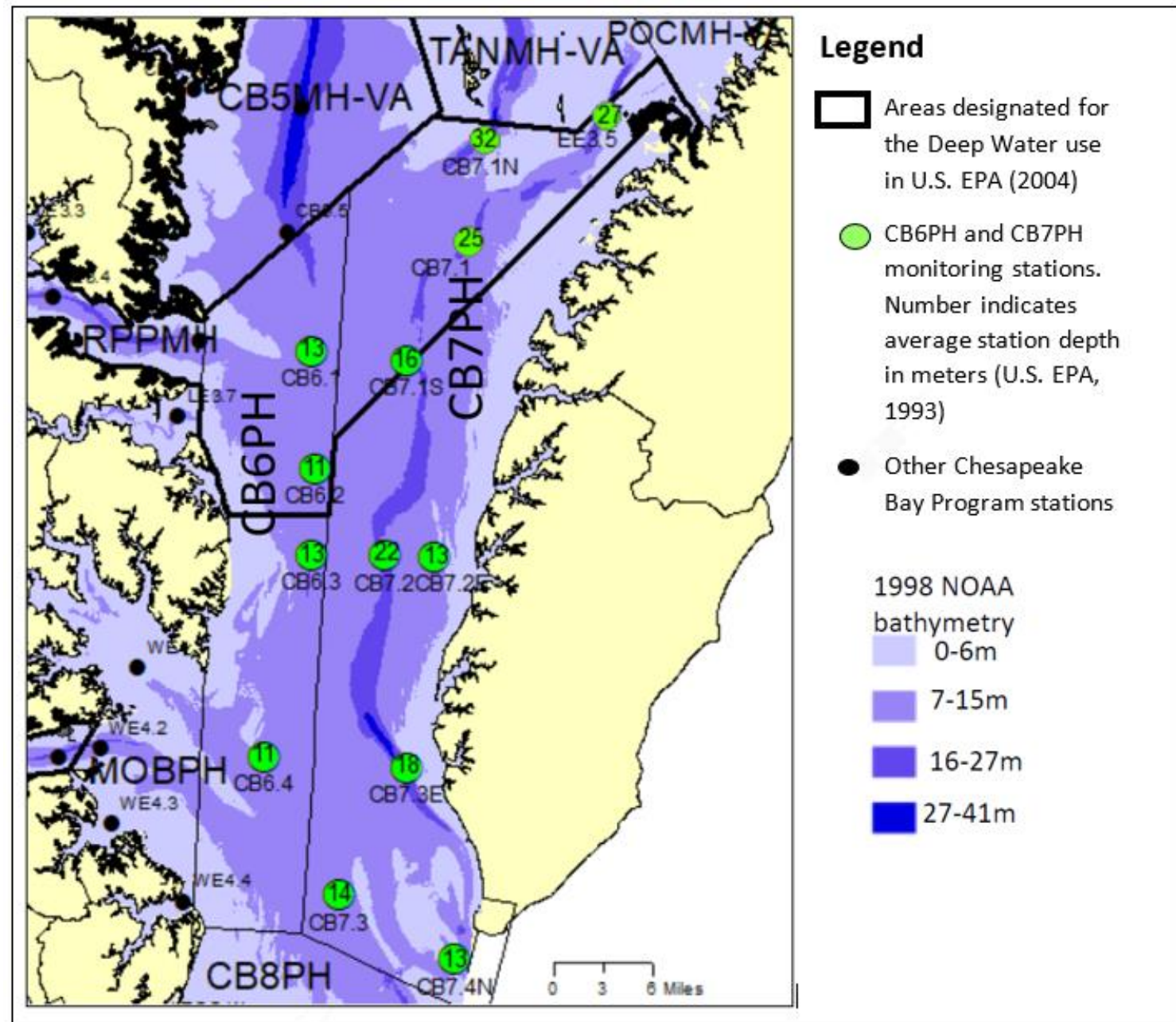
New Station in Segment CB7PH's Deep Trench

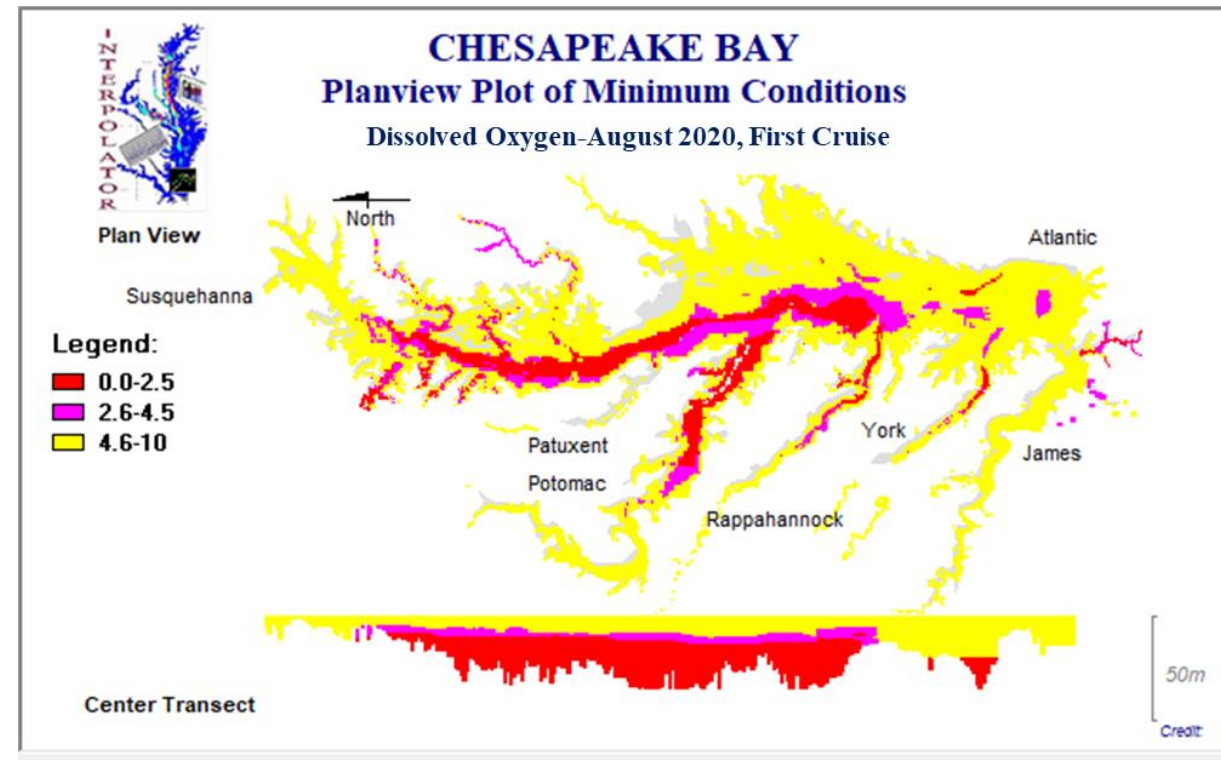
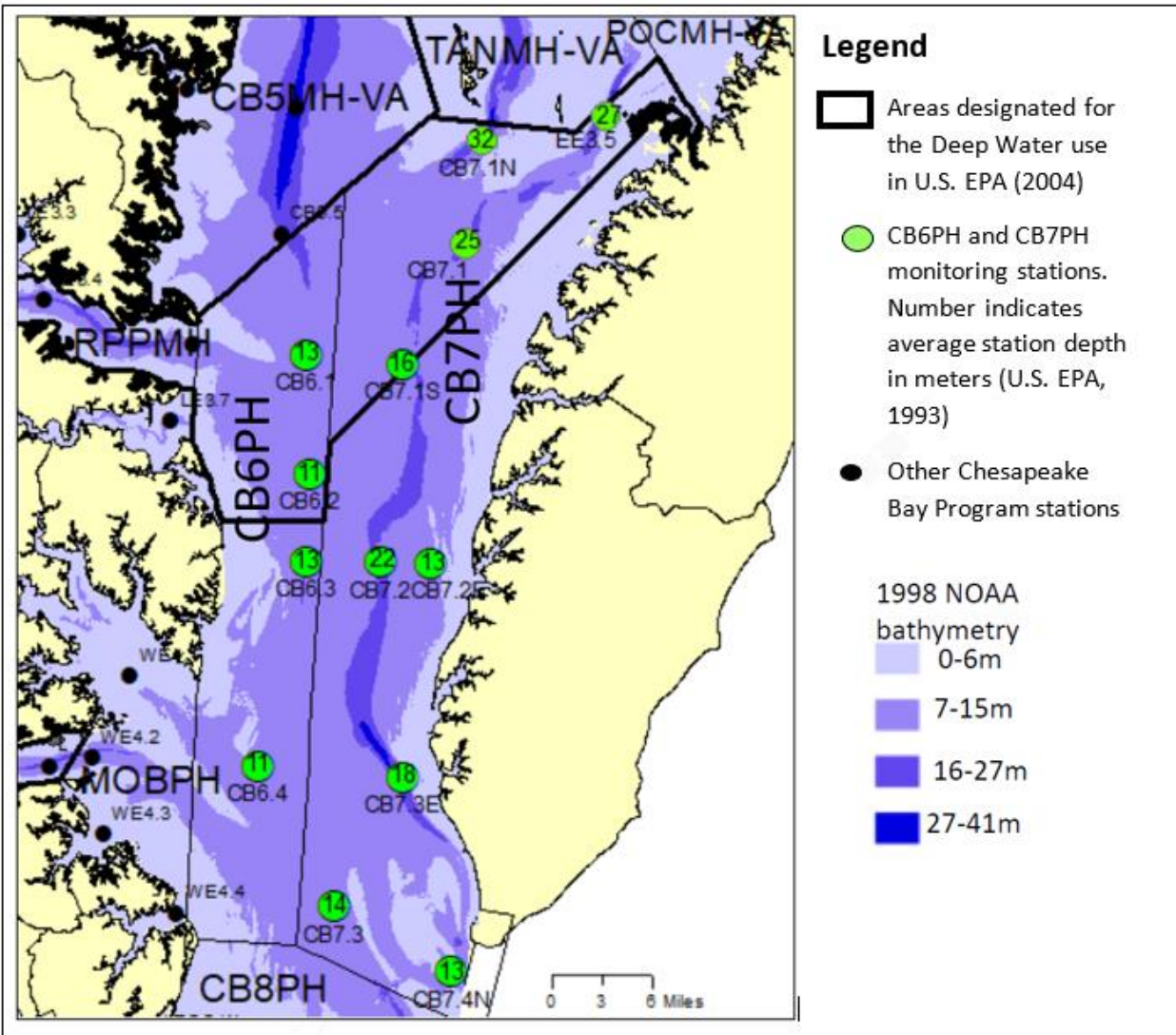
Tish Robertson, Ph.D.

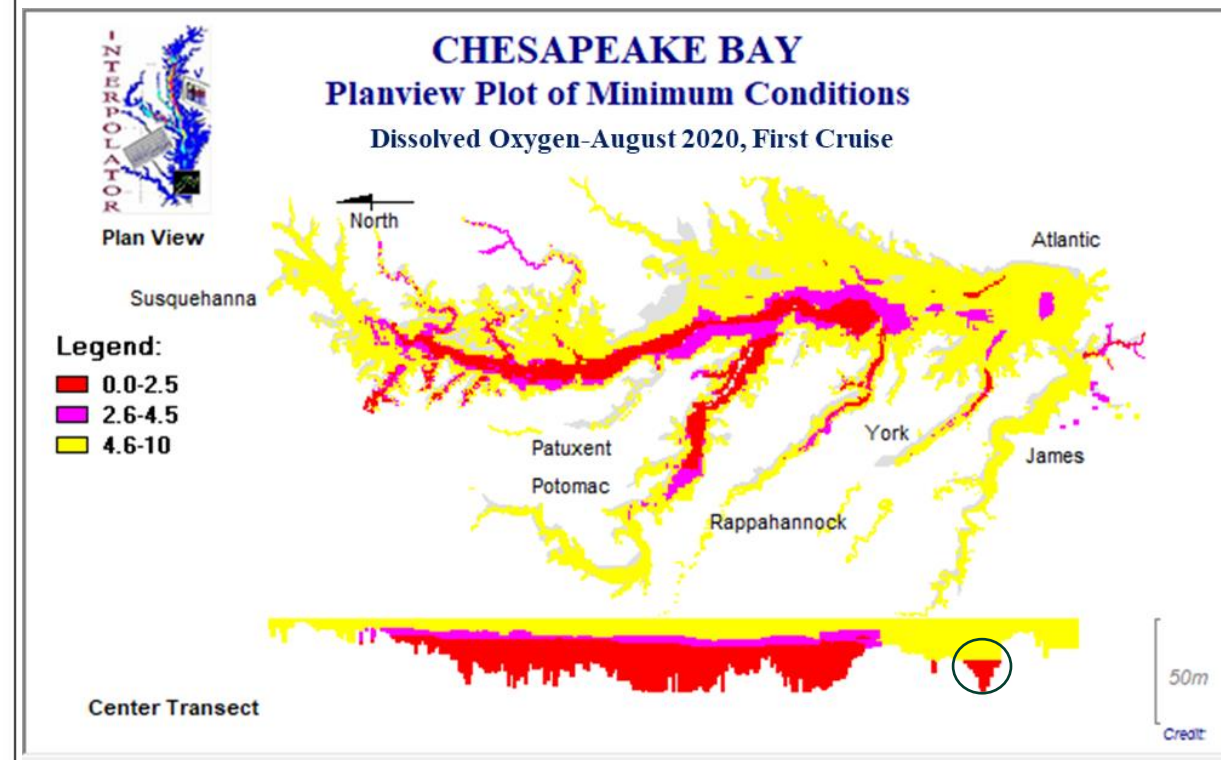
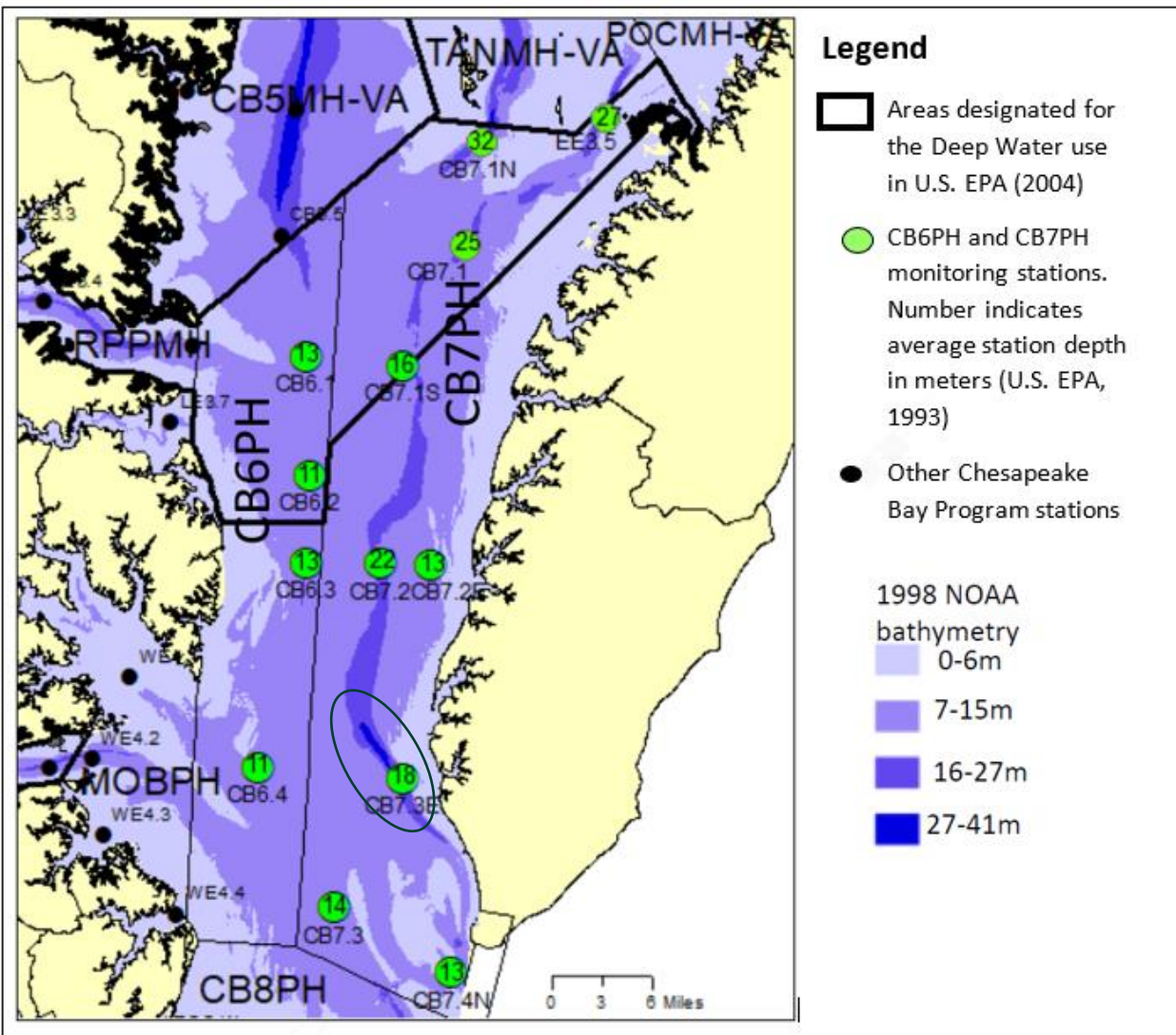
Water Quality Monitoring and Assessment Scientist

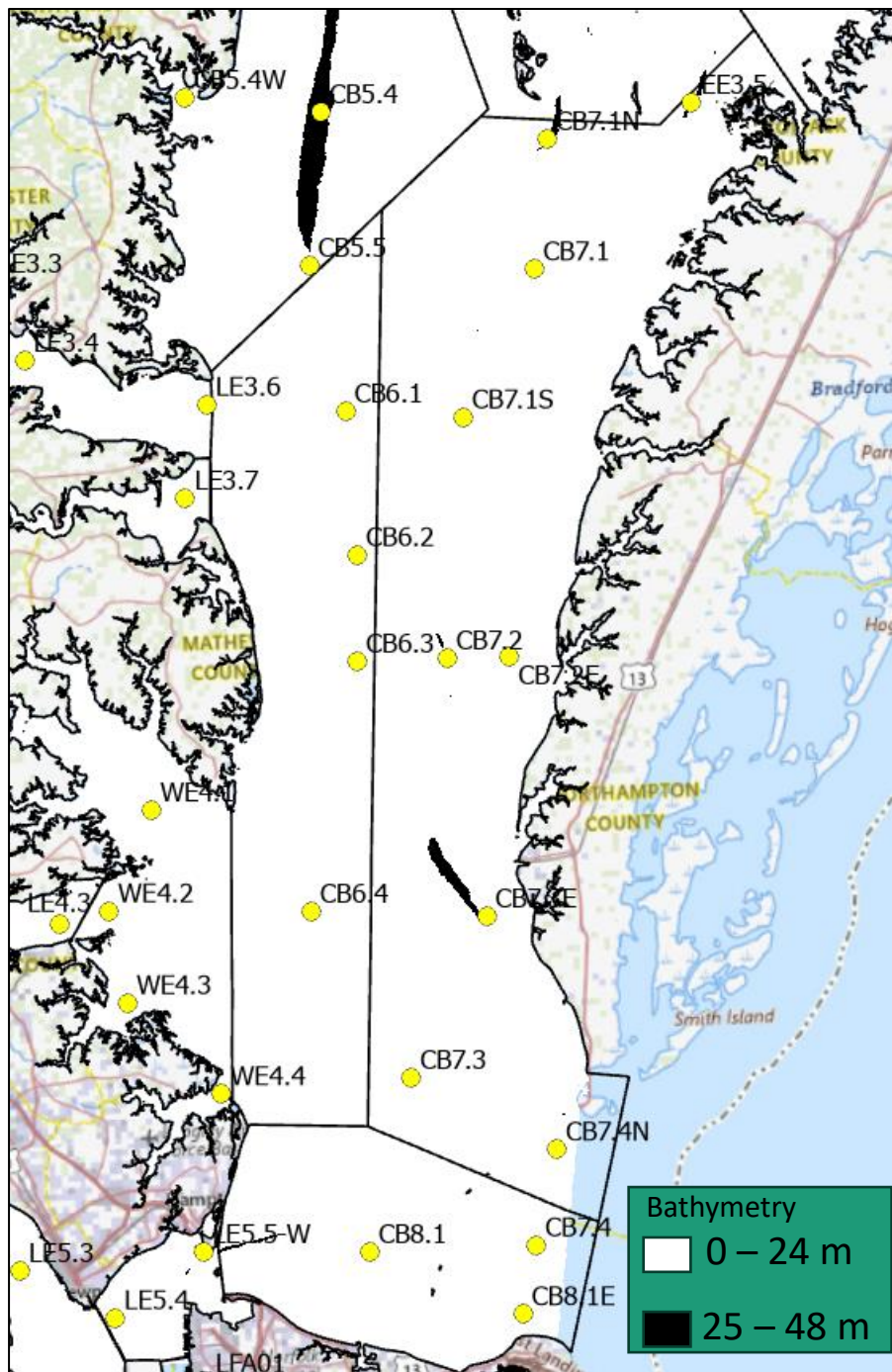
Virginia Department of Environmental Quality

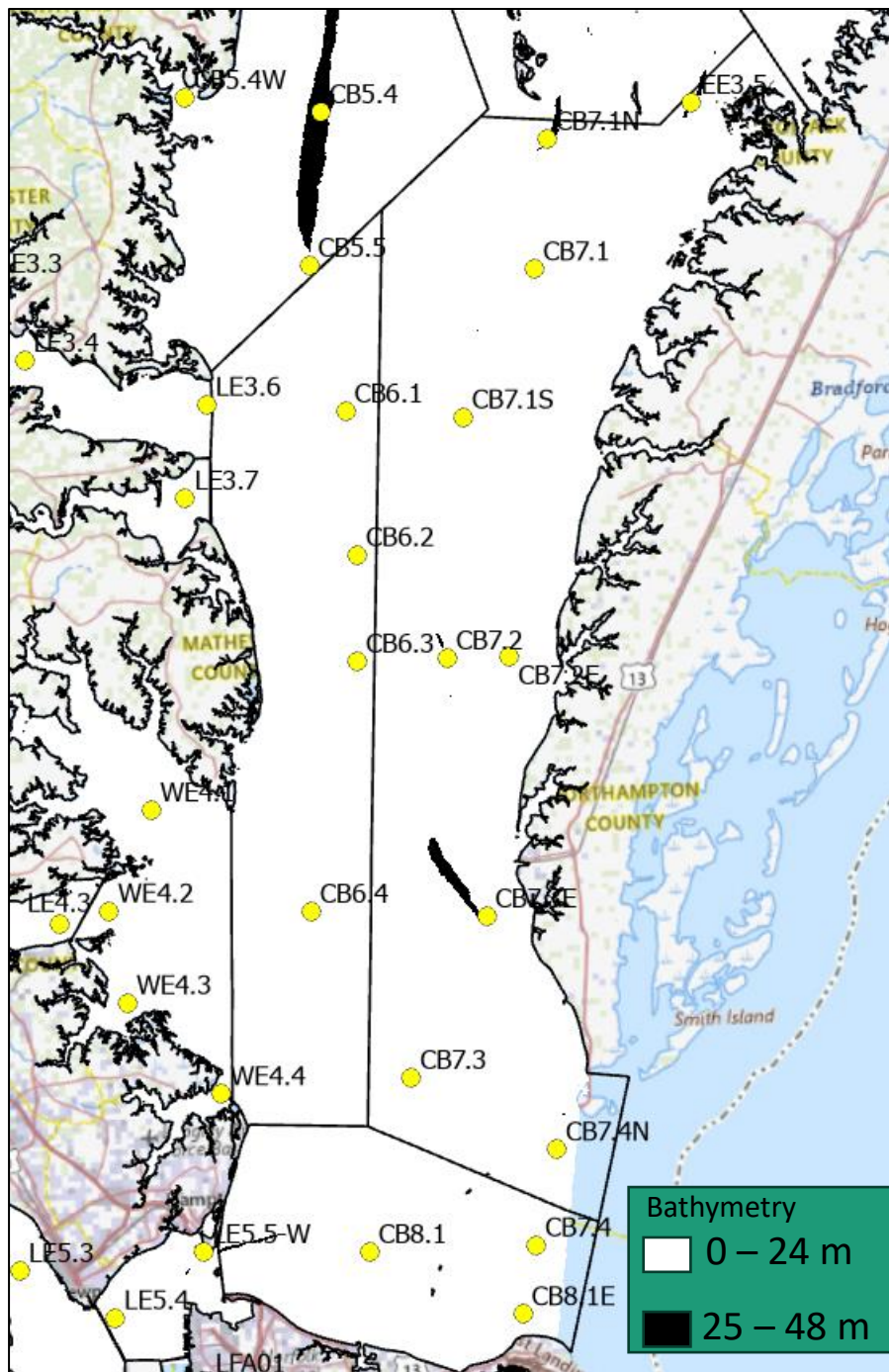
August 13, 2024



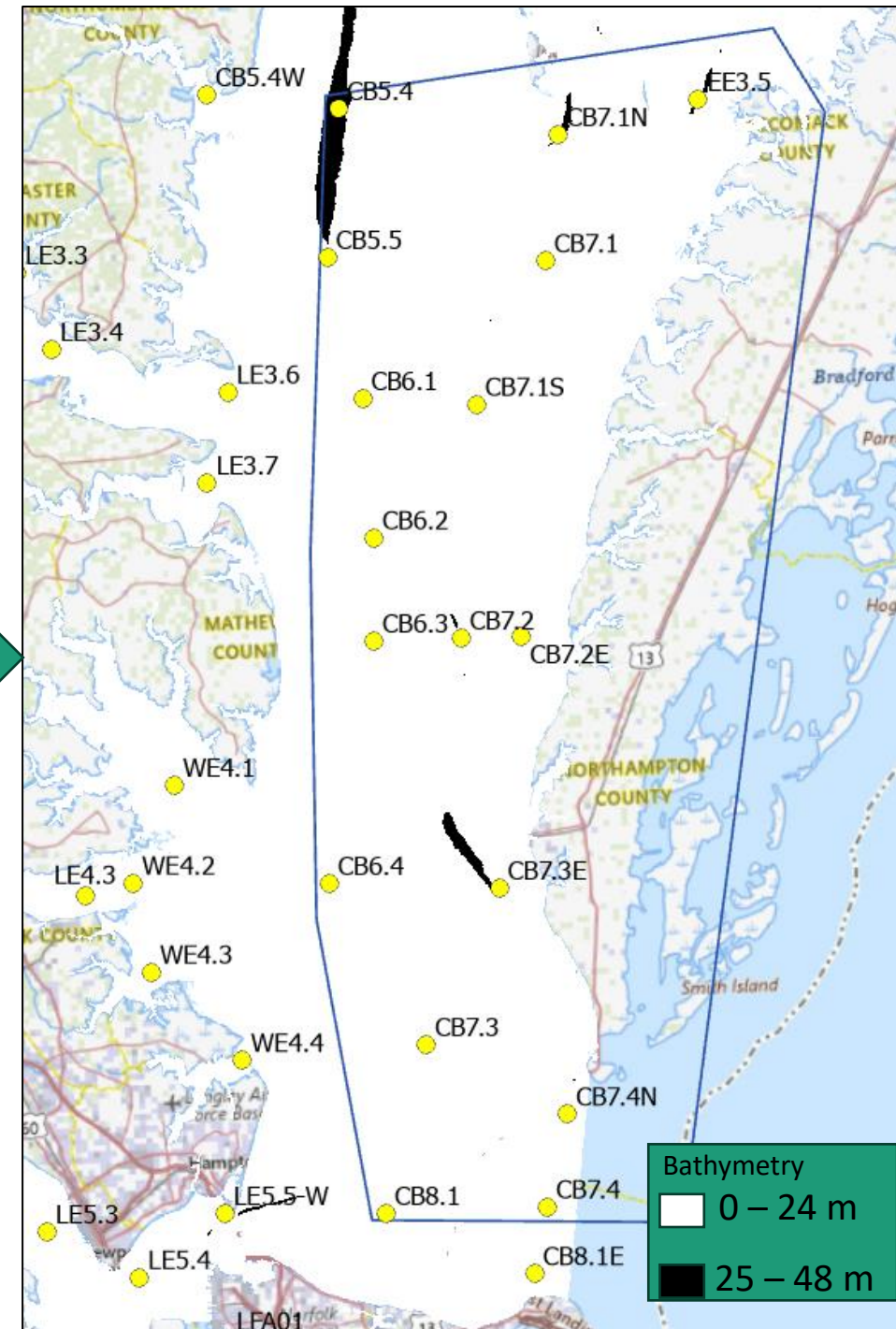


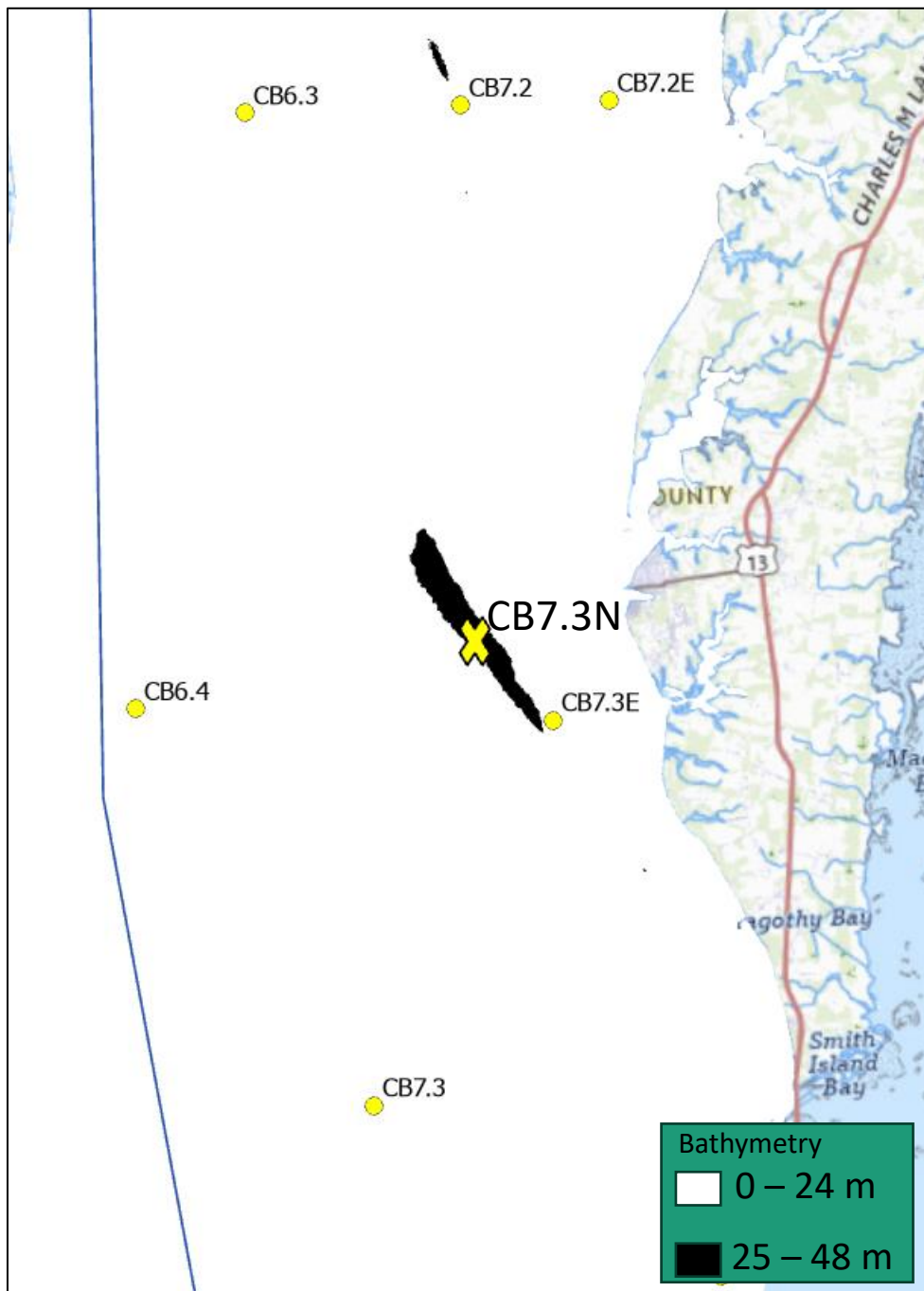






This boundary is used by the Interpolator to compile data for CB7PH





- DEQ has established a new station in CB7PH.
- Station ID = CB7.3N
- The total depth at this station is about 40 meters.
- ODU has been collecting data at this station since the first cruise of July 2024.
- DO, salinity, and temperature measurements taken at the surface and bottom 10 meters

Questions?