

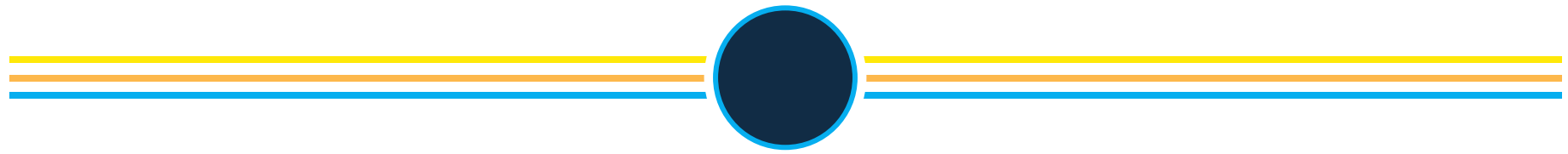


Chesapeake Bay Program
Science. Restoration. Partnership.

June 9, 2025

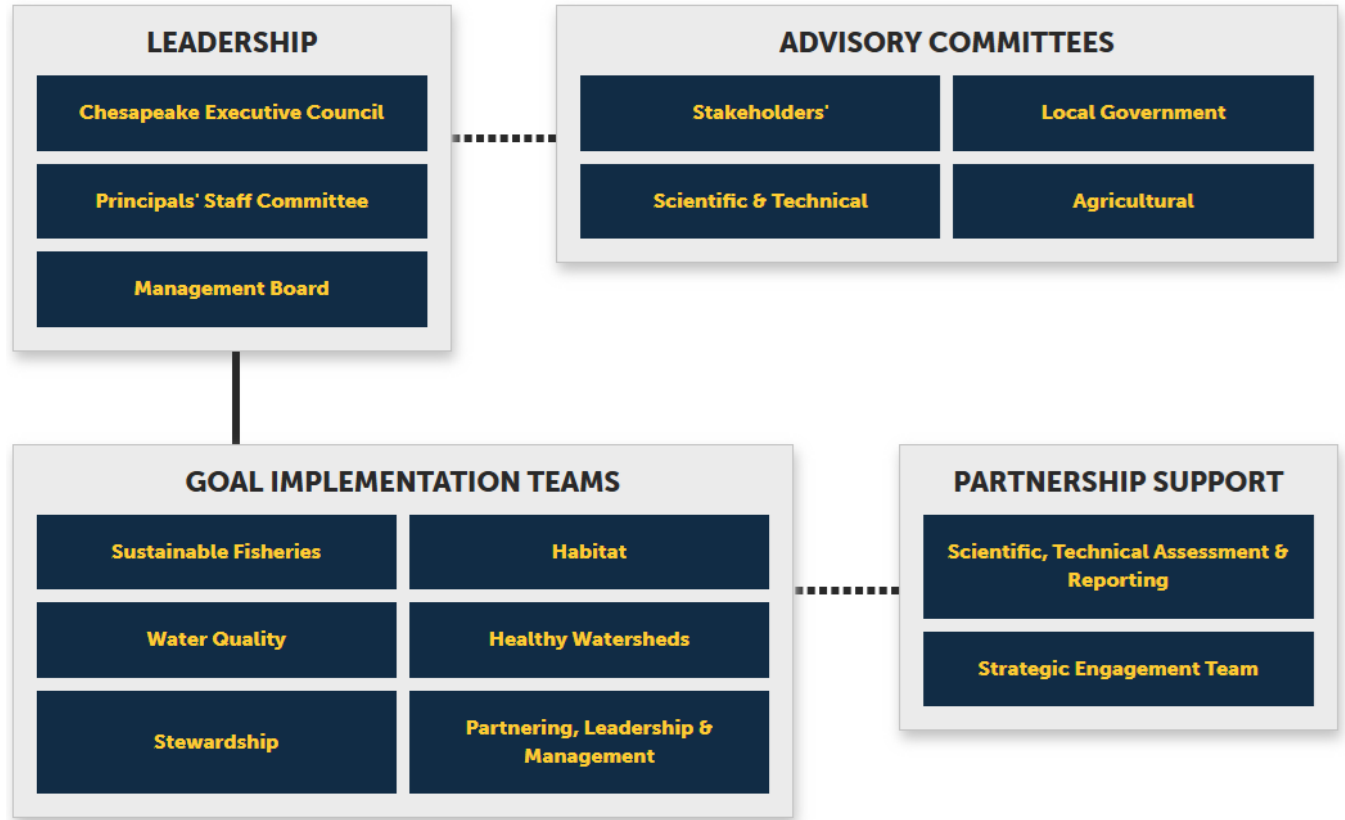
Chesapeake Bay Program Decision-Making: An Overview

CAP Workgroup Meeting



Who are the decision-makers?

**All of CBP
plays a role!**



Key CBP Decision Makers

- ***Chesapeake Executive Council (EC)***: Establishes the policy direction for the restoration and protection of the Chesapeake Bay.
- ***Principals' Staff Committee (PSC)***: Serves as the policy advisors to the EC, accepting items for EC consideration and approval and setting agendas for EC meetings. The PSC translates the restoration vision by setting policy and implementing actions on behalf of the EC.
- ***Management Board (MB)***: Provides strategic planning, priority setting and operational guidance and manages the implementation of the goals, outcomes and strategies of any Chesapeake Bay agreement and supporting policies.

Key CBP Decision Makers

- ***Goal Implementation Teams (GITs)***: Focuses and drives implementation to achieve very explicit progress and results within the scope of their goal area.
- ***Workgroups***: Supports specific strategies under the GITs and are typically comprised of subject matter experts and on-the-ground implementers.
- ***STAR and SET***: Support and coordinate important functions of the partnership, including monitoring, modeling, scientific analyses, communications, outreach, stewardship, engagement, and social science.

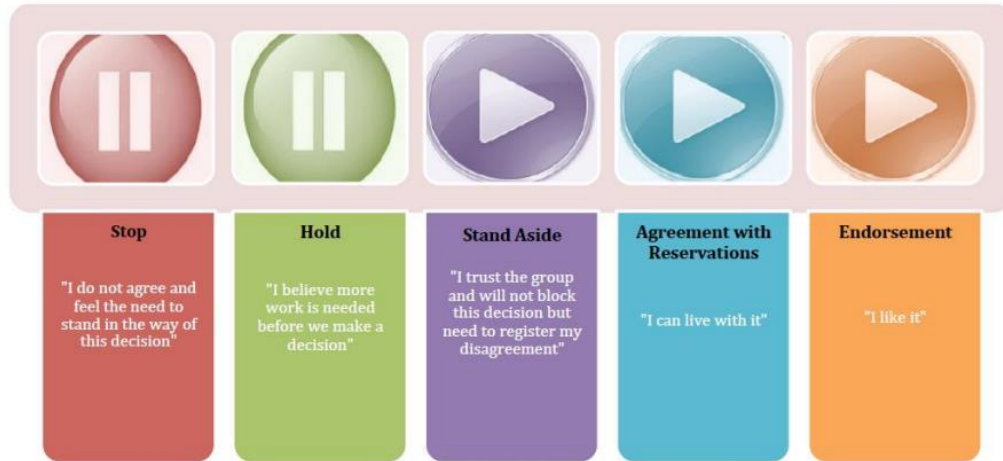
Advisory Committees

- Comprised of appointed and/or elected volunteers who serve as independent thinkers and advisors to the Chesapeake Executive Council, Principals' Staff Committee and Management Board.
- These committees serve as liaisons between the Chesapeake Bay Program and four critical stakeholder groups:
 - watershed residents,
 - local government leaders,
 - the agricultural industry, and
 - the scientific community.
- Serve as non-voting members of the PSC and Management Board.

Key Decision-making Principle

Seek **consensus** when making decisions.

Consensus Continuum



Decision-making Approach

- ***Executive Council, PSC, and Management Board:*** If after substantial discussions consensus cannot be reached, a supermajority vote by full members or their designees will be utilized, requiring at least seven out of nine “yea” votes.



Decision-making Approach

- ***GITs, Workgroups, and Action Teams:*** Will use a unanimous or consensus-based process that ultimately concludes in a polling of the members, to get a sense of the will of the group.
 - If the poll is unanimous or if consensus reached, the decision is approved.
 - If consensus cannot be reached, the decision will be elevated to the next level in the hierarchy with a description of the positions of the members, in particular those of dissenting members.



What kind of Decisions?



- **Policy (*EC, PSC, MB*)**
 - Revisions to the Agreement
- **Technical (*GITs and Workgroups*)**
 - Approving updates to the Model
- **Scientific (*MB, GITs, Workgroups*)**
 - Shallow Water Targeting/Focus
- **Governance (*EC, PSC, MB, GITs*)**
 - Changes to decision-making at GIT level
- **Procedural (*MB, GITs, Workgroups*)**
 - Group membership
- **Budgetary (*EC, PSC, MB*)**
 - High-res land use data

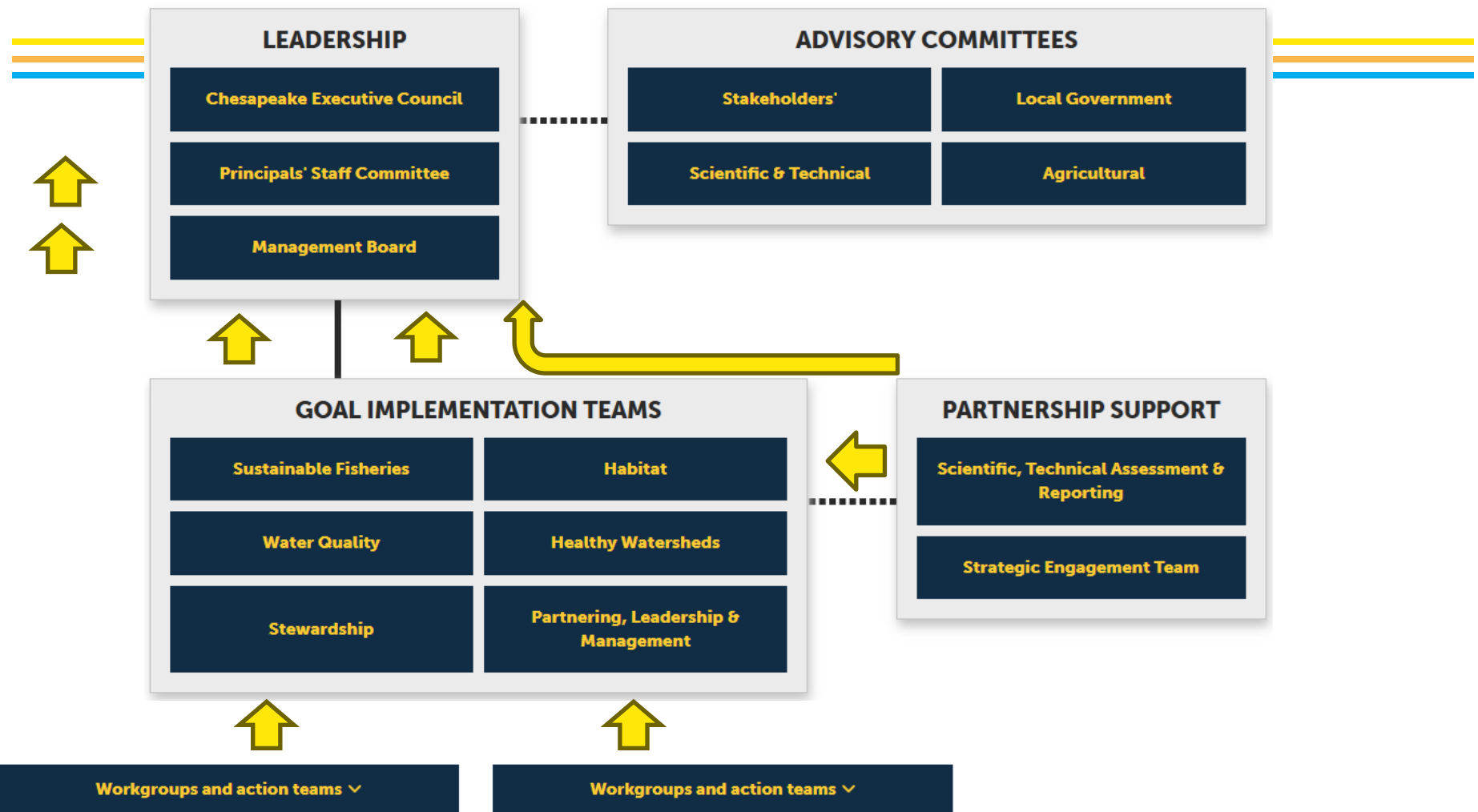
- However, any technical or scientific decision that has significant policy impacts needs to be elevated to MB, PSC, and sometimes even the EC.



Flow of Decision-making

Flow is largely dependent on: What is the impact of the decision?





WQGIT Example(s)

- Forest Harvesting BMP for Phase 7
 - Forestry Workgroup (Timber Harvest Task Force) ➡ Watershed Technical Workgroup ➡ WQGIT
- Beyond 2025—WIP Outcome Language
 - EC ➡ PSC ➡ MB ➡ WQGIT ➡ MB
- “Interim Targets” for meeting WQ Goals
 - WQGIT ➡ MB ➡ PSC (WQGIT--PSC—WQGIT/MB—MB—PSC—WQGIT—MB--PSC)



Thank you!

Any questions?

Power.Lucinda@epa.gov

Williams.James@epa.gov



Chesapeake Bay Program

Science. Restoration. Partnership.