

VISUALIZATION OF PHASE 6 RANGING SCENARIOS - UPDATE

Presentation to the Modeling Workgroup

December 13, 2016

John Wolf

OVERVIEW

- Visualize spatial arrangement of N, P, and TSS yields associated with P6 of the Watershed Model and expected Deep Channel responses
- Interactive – user can pan, zoom and access nutrient/sediment details of a particular LRSeg (yields) or Bay segment (attainment)
- Scenarios include AllElse and Point Source loads/yields
- Data from CBP Modeling Team
- Functionality and data will evolve

REVIEW

- CBP Modeling Team – September 6 and 20
- Modeling Workgroup – October 4
- WQGIT – October 24
- Review Period – November 4-30

TWO FLAVORS

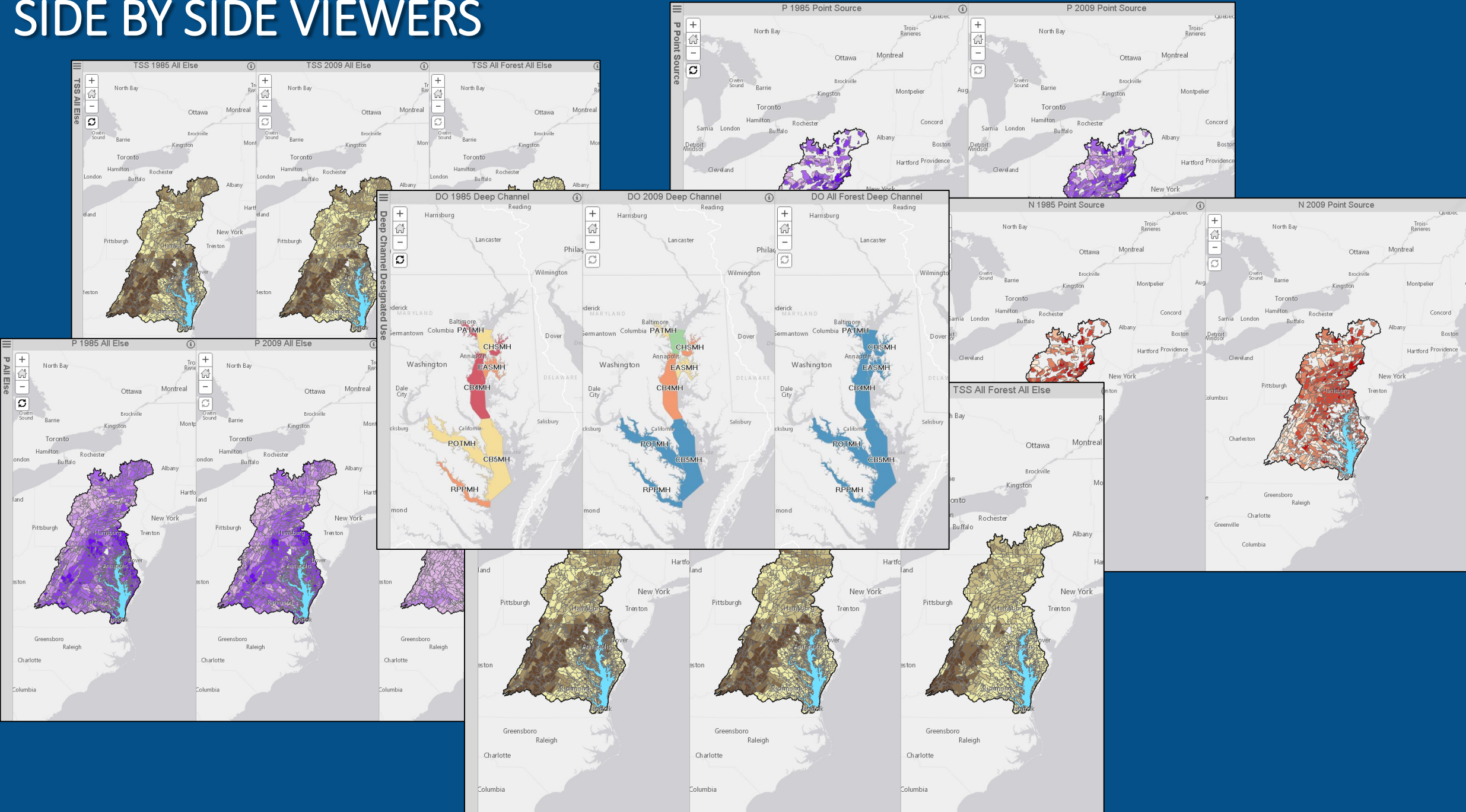
A

- Preconfigured side-by-side presentation of alternative scenarios
- Consistent
- Views can be synched

B

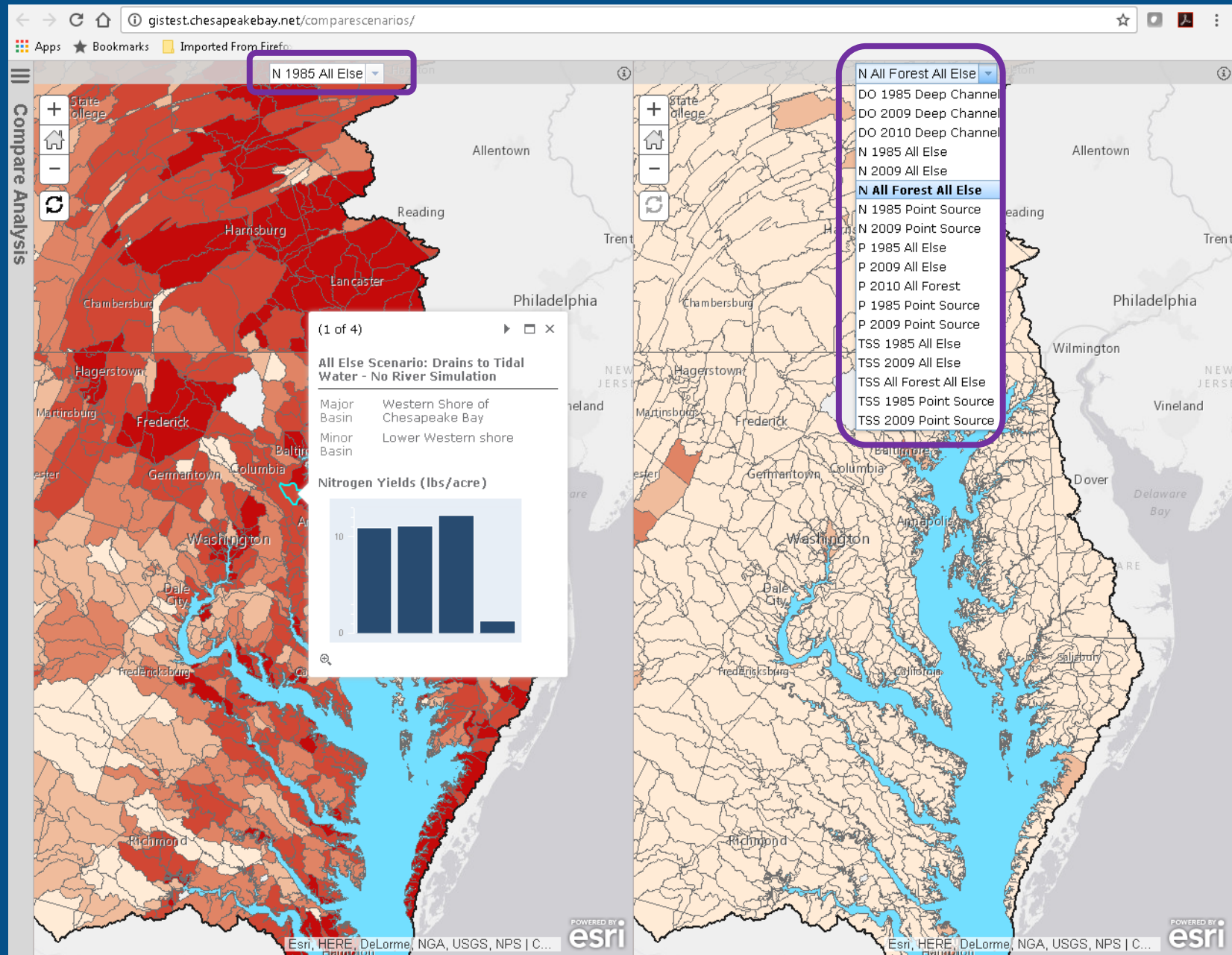
- Custom layer selection
- View scenarios alongside other Model layers

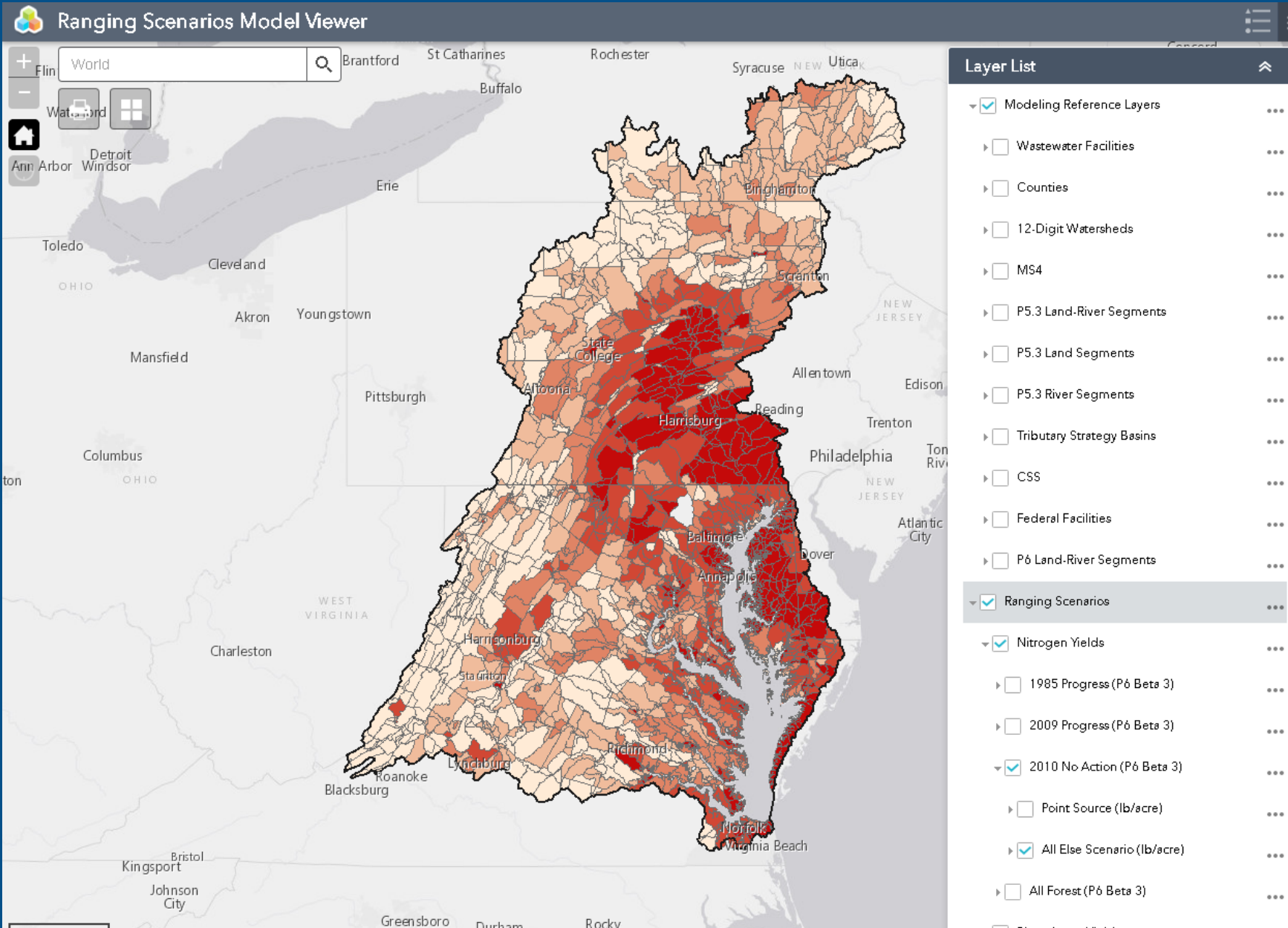
SIDE BY SIDE VIEWERS

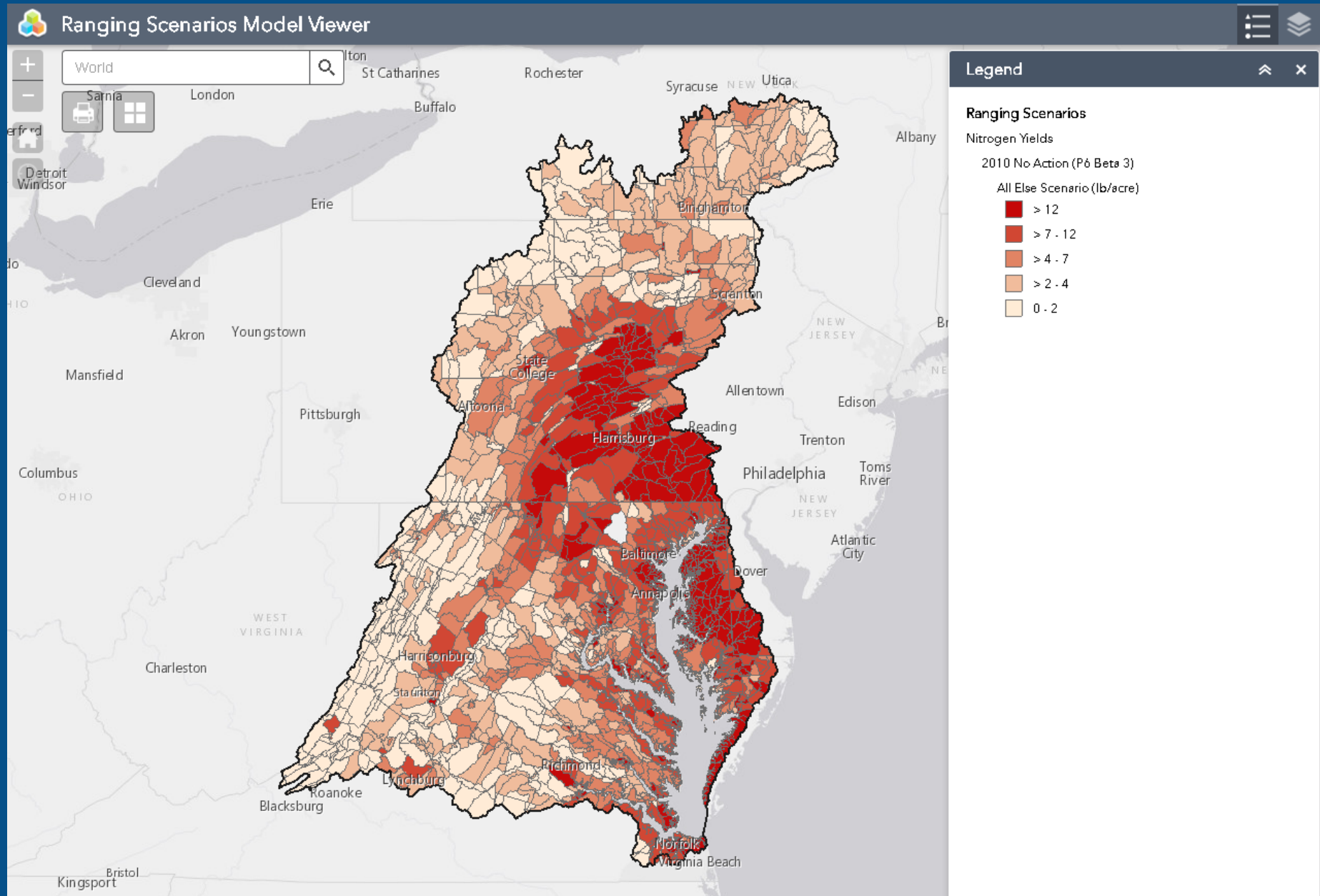


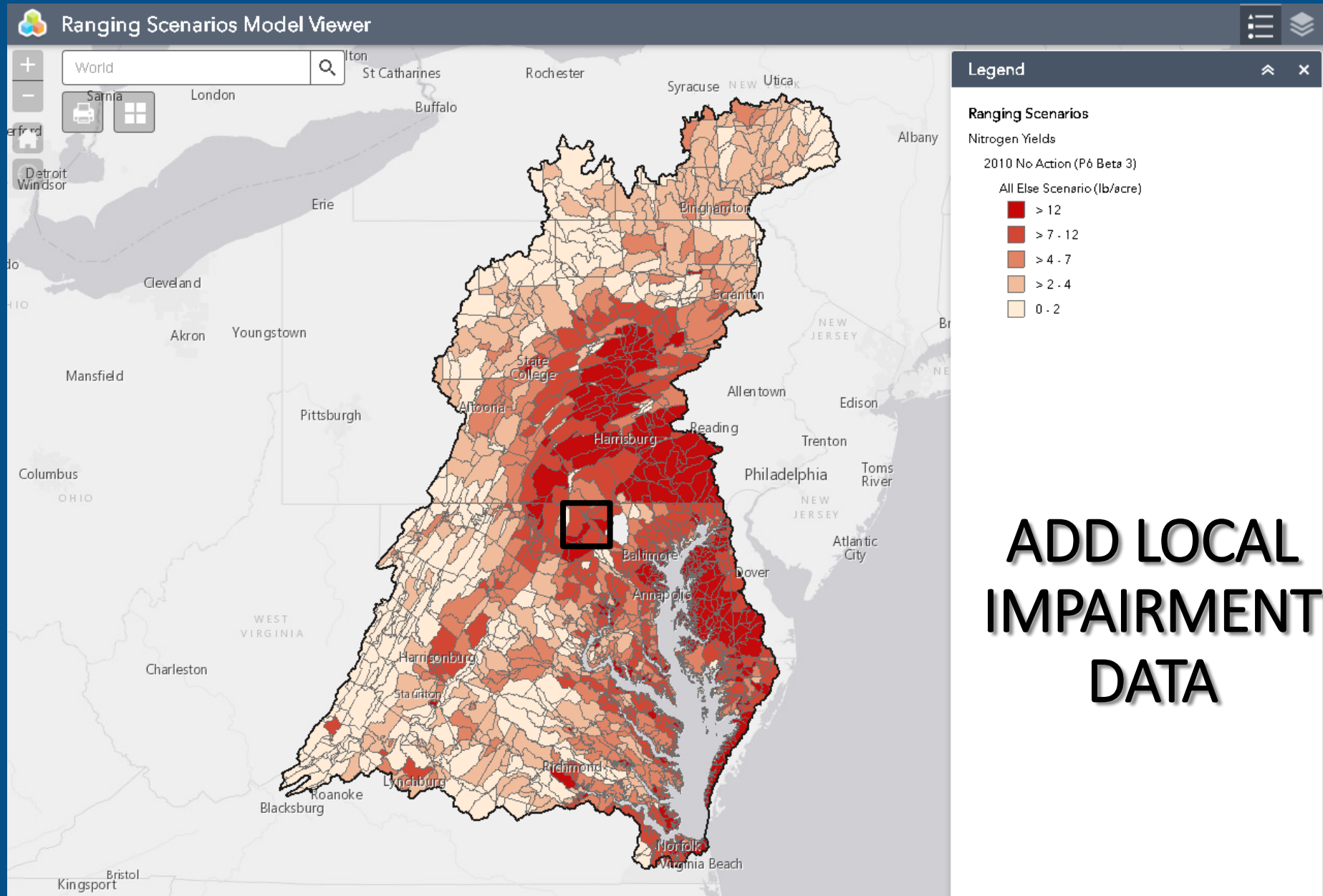
SIDE BY SIDE VIEWER

USER SELECTS SCENARIOS OF INTEREST

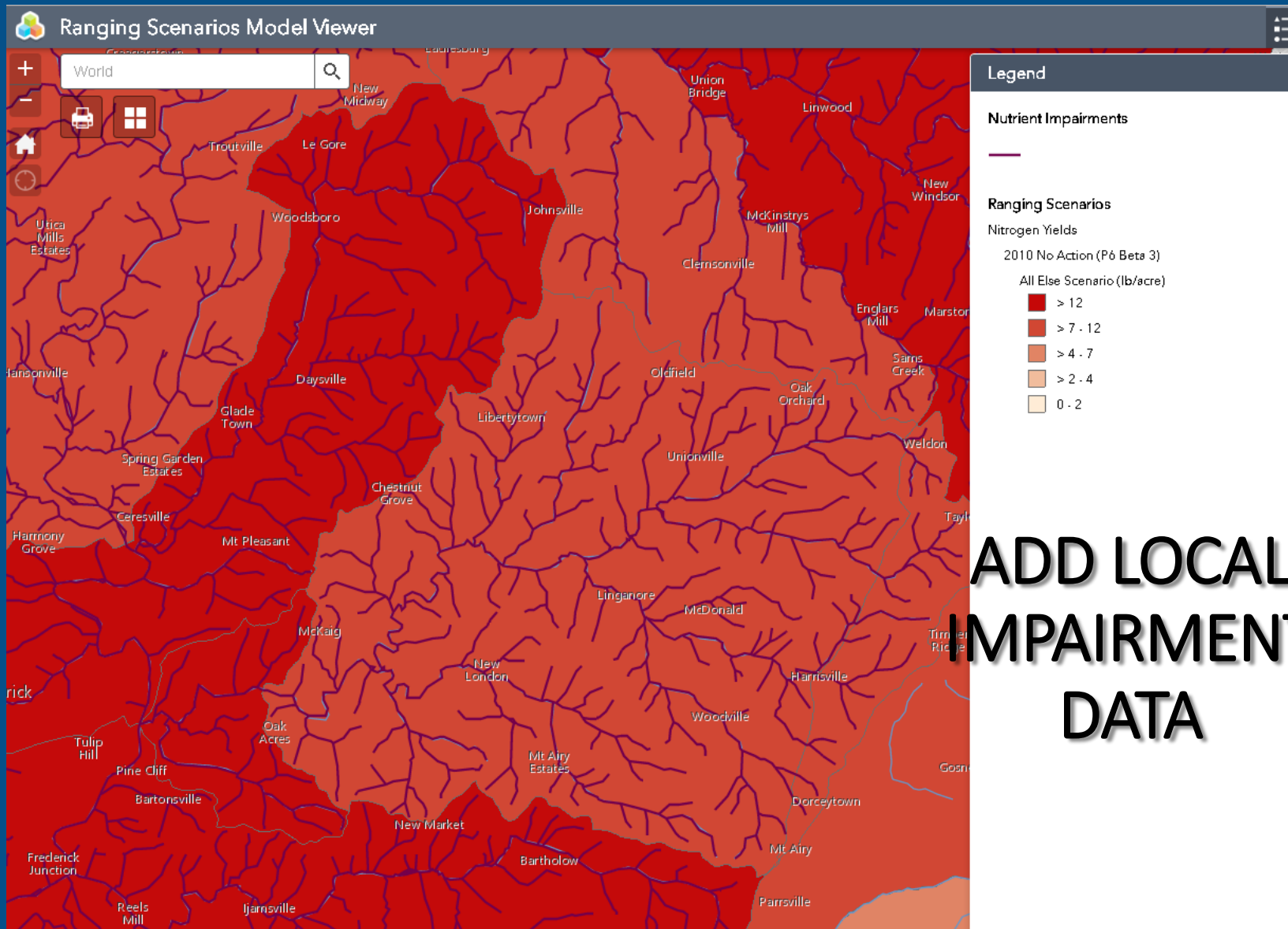








**ADD LOCAL
IMPAIRMENT
DATA**



ADD LOCAL
IMPAIRMENT
DATA

RANGING SCENARIOS VIEWER – OTHER REQUESTS

- Enable popups
- Yields should be presented for multiple geographic units (LRSeg, counties, other?)
- Is load per acre (yield) the best measure for point sources?
- Include specific sectors within All Else
- Include ability to isolate federal facilities within various scenarios
- Include “download data” button
- Enhance printing, bookmark and clipboard capabilities