An aerial photograph of a dense forest. The trees are mostly green, with some showing yellow and orange hues, suggesting early autumn. The forest is dense and covers a large area.

Name
Organization
What do you like most about trees?
(Try to answer in one word!)

Through the Chesapeake Bay Watershed Agreement, the Chesapeake Bay Program has committed to...

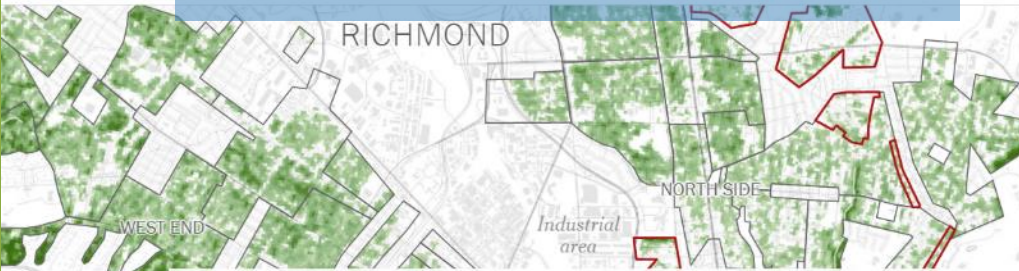


Goal: *Vital Habitats*
Outcome: *Tree Canopy*

Significant Benefits...



Significant Challenges...



Formerly redlined areas have less **tree cover** today than areas that weren't redlined.

0% Percentage tree cover 100%

Historical neighborhoods that were not redlined



15th Annual Chesapeake Watershed Forum

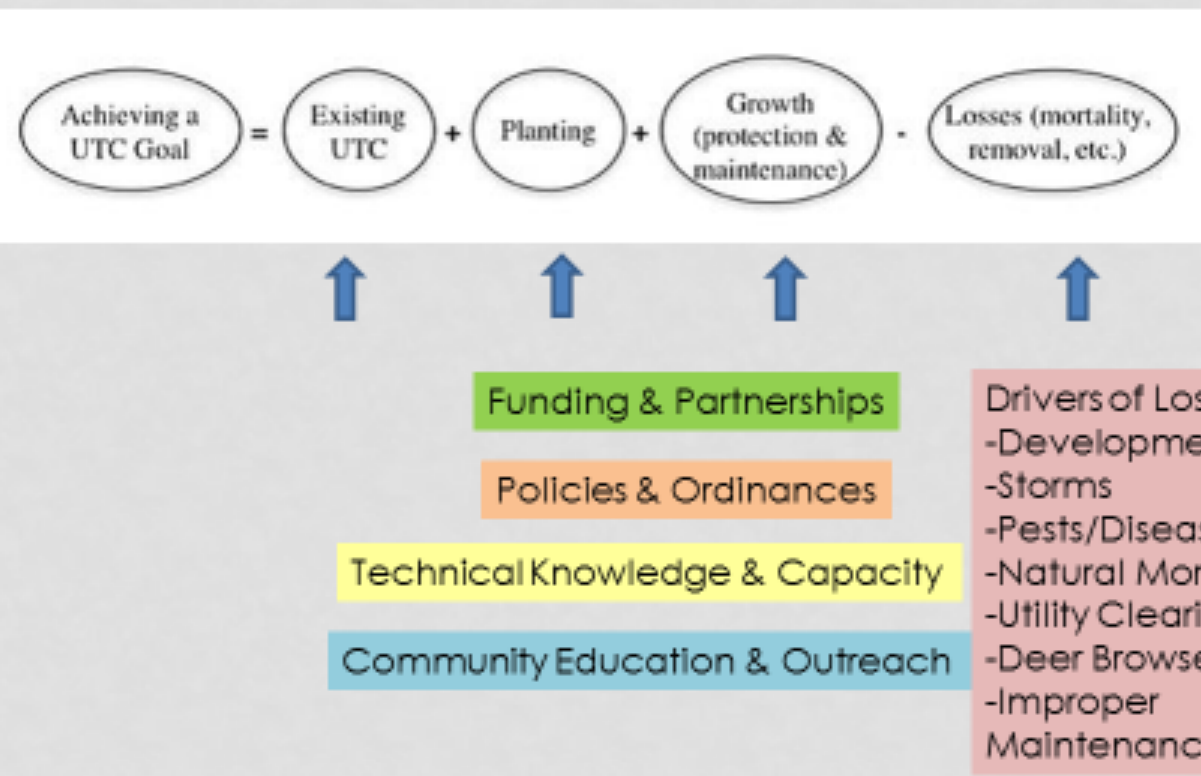


Heat, Health & Trees

Photo Credit: Amina Lampkin/Howard Center for Investigative Journalism, University of Maryland

Learn more: [Heat, Health & Trees Session](https://www.nytimes.com/interactive/2020/08/24/climate/racism-redlining-cities-global-warming.html), Chesapeake Watershed Forum;
<https://www.nytimes.com/interactive/2020/08/24/climate/racism-redlining-cities-global-warming.html>

FACTORS INFLUENCING ABILITY TO REACH URBAN TREE CANOPY GOALS





Successes – Summit 2.0

BOLSTER Funding & Partnership



Financing Urban Tree Canopy Programs *Guidebook for Local Governments in the Chesapeake Bay Watershed*

Prepared by
the Environmental Finance Center at the University of Maryland
and the Alliance for the Chesapeake Bay

MARCH 2019

STRENGTHEN Policy & Ordinances

Making Your Community Forest-Friendly

A Worksheet for Review of Municipal Codes and Ordinances
August 2018

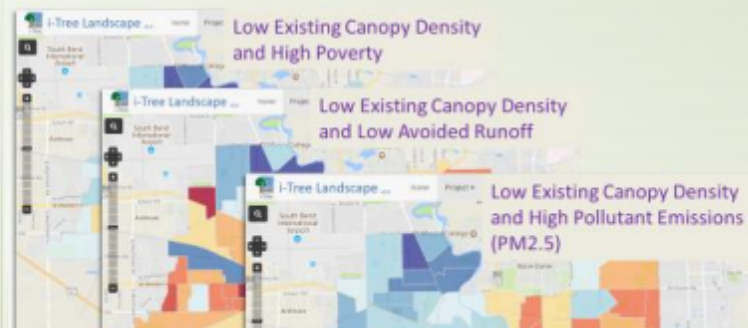
Produced by the Center for Watershed Protection Funded by the USDA Forest Service



This project was made possible through funding from the USDA Forest Service. USDA is an equal opportunity provider, employer and lender.



INCREASE Technical Capacity & Knowledge Inform Community Decisions and City Priorities



EXPAND Community Outreach & Education



Trees, Equity and Cultural Competency



Recent Efforts with EJ Focus

Tree Canopy, Environmental Justice & Community Engagement Project (2017-2020 Grant)

- ✓ 2017 Regional Workshop
- ✓ Pilot Communities in Anacostia
- ✓ Case studies on [Vibrant Cities Lab](#):

- [Detroit, MI](#)
- [Baltimore, MD](#)
- [New Jersey](#)
- [Oakland, CA](#)
- [Portland, OR](#)



TREES FOR ALL:

Chesapeake Regional Environmental Justice Workshop

National Wildlife Visitor Center
August 8-9, 2017

[Overview](#)[Demographic Indicators](#)[Cross-Outcome Applications](#)[Current Initiatives](#)[Acknowledgements](#)

Tree Canopy

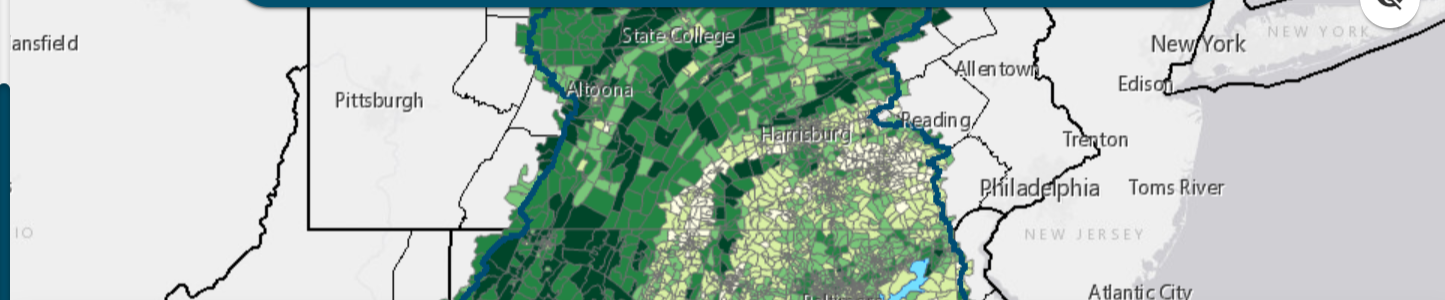
[Separate window](#) - Open this section separately in its own window.

Potential Management and Research Questions

- How do local communities with large proportions of underserved populations compare to other communities in terms of urban (or other) canopy cover?
- Can these areas be prioritized for infill reforestation?

Stream Health

Tree Canopy Outcome



Quick Start Information

Chesapeake Bay Watershed Land Cover 2013/2014 - The land cover data represents land cover conditions as evident in NAIP (National Agriculture Imagery Program) imagery for the years 2013/2014.

Tree Canopy by Census Block Group - Percent tree canopy coverage based on high-resolution land cover data (2013-2014) for the Chesapeake Bay watershed.

Percent Minority - Percent minority as a fraction of population, where minority is defined as all but Non-Hispanic White Alone. Calculated from the Census Bureau's American Community Survey 5-year summary estimates.

Percent Low Income - Percent of individuals whose ratio of household income to poverty level in the past 12 months was less than 2 (as a fraction of individuals for whom ratio was determined). Calculated from the Census Bureau's American Community Survey 5-year summary estimates.



Preliminary Ideas on How to Incorporate DEIJ

- Expand and focus the assistance available to support tree canopy efforts in underserved communities of color and low-income areas
- Use CBP's DEIJ Strategy and forthcoming Implementation Plan to advance tree equity
- Build on the [Environmental Justice and Equity Dashboard](#) to develop a toolkit of data, tools and resources to support local tree equity initiatives

What are some opportunities to better incorporate DEIJ into Tree Canopy work?

- Using EJ screen in WV; identify high risk communities re air pollution- emissions coming from Ohio, and local areas. American Forests tree campus healthcare- nursing homes, hospitals. Schools- pre-k, elementary
- Max, Chesapeake College, students doing tree work
- DC/DOEE- Previous tree planting project without prior community outreach, shift in campaign for tree planting challenge, opportunity to write stories, videos, games, learning more about trees. Emphasizing clean air, and give the community opportunity to buy in.

Funding and
partnerships

policies and
ordinances

technical
knowledge and
capacity

community
education and
outreach

What kinds of training or tools would be most helpful for communities?

- Re Kevin's dc- tools and training specific to the community
- Need to make the connection between trees, heat islands in these areas
- PA- tree equity specialist position last year- focus on guiding partners in best practices, targeted outreach to build capacity in communities, working on filling position. Looking for someone with a background in education, social science; focusing on the human dimension vs natural resources.
- Beltsville farm- display conditions, sensors for air pollution so communities can see the conditions in their area
- iTree landscape trainings

Funding and
partnerships

policies and
ordinances

technical
knowledge and
capacity

community
education and
outreach

from jmawhorter to everyone in this breakout session: 10:39 AM

Just want to make sure we capture in the notes Max's point that Chesapeake College is starting to work with students around tree projects

from jmawhorter to everyone in this breakout session: 10:41 AM

Check out City of Trees documentary-I think it might be still on Netflix

from BeKura Shabazz to everyone in this breakout session: 10:42 AM

Having 1 person dedicated to these areas who are vested in the well being of the community. Should be a person from the community and should be paid and offered training.

from Sky Swanson to everyone in this breakout session: 10:42 AM

Unfortunately, due to some technical issues, I missed the first half of the presentation. We (UMCES-IAN) would be very interested in working/talking with you further about incorporating data from this into the 2019 Chesapeake Bay Report Card diversity indicators. My Email is sswanson@umces.edu, the project lead is Alex Fries (afries@umces.edu), looking forward to discussing this further with you!

from jmawhorter to everyone in this breakout session: 10:44 AM

Here is the draft Trees and Schools guide, open for stakeholder input until March 1 : <https://chesapeakeketrees.net/category/schools/>

from Britt Slattery to everyone in this breakout session: 10:48 AM

I believe what Max is suggesting does exist.

from Britt Slattery to everyone in this breakout session: 10:48 AM

Monitoring stations kind of thing.

from Britt Slattery to everyone in this breakout session: 10:48 AM

Is it part of iTree??

What kinds of training or tools would be most helpful for communities?

from Erin Sullivan to everyone in this breakout session: 10:53 AM

Some current/former EPA EJ grantees who might be interested: Living Classrooms, National Aquarium, City Blossoms

from Britt Slattery to everyone in this breakout session: 10:54 AM

Yes, Erin. Symone Barkley at the Aquarium has a great college student engagement program. They might be a good group to enlist in working with communities. Students are helping w/ K-12 education programs on water quality.

from Britt Slattery to everyone in this breakout session: 10:57 AM

Julie if you want to send the Trees & Schools guide to ELit workgroup to distribute for comment, I can help with that (ie., I'll ask our awesome staffer Olivia Wisner to send it out).

Funding and
partnerships

policies and
ordinances

technical
knowledge and
capacity


community
education and
outreach

We're looking for
community-based
groups or partners
interested in engaging
with tree canopy
efforts.

THANK YOU!!!
To learn more...
<https://chesapeaketrees.net/>

To get involved:
Julie Mawhorter,
julie.mawhorter@usda.gov





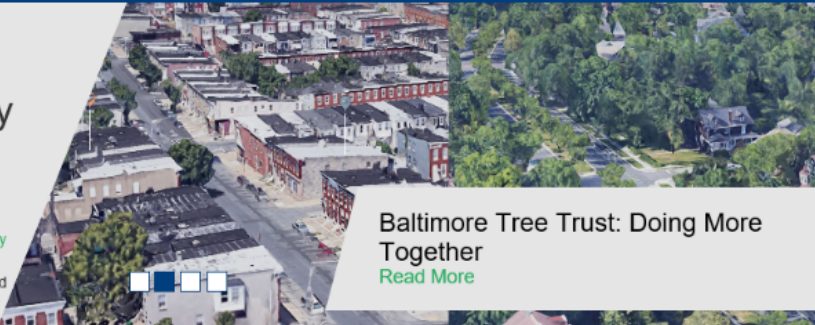
Chesapeake
Tree Canopy
Network

SIGN UP NEWSLETTER ARCHIVE ABOUT US CONTACT US CHESAPEAKEFORESTBUFFERS.NET

WHY TREE CANOPY? ▾ UNDERSTAND YOUR CANOPY EXPAND YOUR CANOPY ▾ MAINTAIN YOUR CANOPY ▾

Welcome to the Chesapeake Tree Canopy Network

Connecting you with resources, stories, and best practices to [understand your canopy](#), [expand your canopy](#), and [maintain your canopy](#). Learn about and make the case to others [why tree canopy](#) is so critical to a healthy, vibrant Chesapeake Bay watershed. We are building this resource as we go, so please [send your ideas](#) and suggestions for making the network most helpful.



Baltimore Tree Trust: Doing More Together

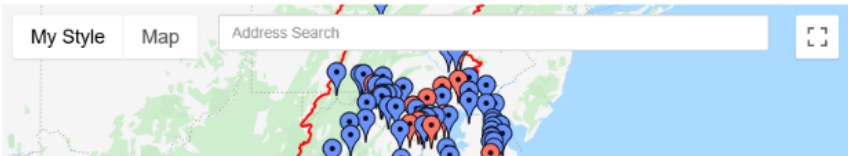
[Read More](#)


Get updates on tree canopy news and events! [SIGN UP](#) [NEWSLETTER ARCHIVES](#)

Tree Canopy Initiatives

Find local tree canopy assessments, goals, and urban forestry contacts.

My Style Map



chesapeake network 

Looking to participate in the tree canopy conversation? Join our group on the [Chesapeake Network](#). Need help joining, posting, or have questions? Check out our [help guide \(PDF\)](#).