

DEIJ Implementation in the Chesapeake Bay Program

**Diversity Workgroup supports Habitat GIT on Targeted
Outreach for Green Infrastructure (TOGI)**

Briana Yancy Diversity Workgroup
Meeting November 19 2021



Chesapeake Bay Program

Science. Restoration. Partnership.

DEIJ in the Implementation of the *Chesapeake Bay Watershed Agreement*

Purpose

This document includes past and ongoing DEIJ Efforts in the Work to Meet Goals and Outcomes of the 2014 [Chesapeake Watershed Agreement](#)

Note: This is a draft document that has not yet been officially reviewed by chairs, coordinators, staffers, or members of the below teams. It will be updated once these parties have had a chance to review and provide feedback.

Presentation Overview

- TOGI Project Overview
- Barriers and Common Challenges
- Where do we come in?



Photo Credit: Choose Cambridge

TOGI Project Overview



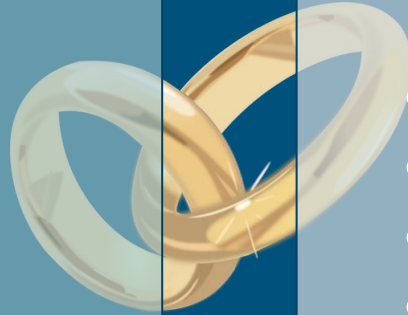
Targeted Outreach For Green Infrastructure (TOGI)

- Funded by EPA through the Chesapeake Bay Program
- Protect/ Create valuable wildlife habitat
- Working with 3 communities with high risk of impact from environmental justice issues and weather extremes
- Hold listening session to better understand the community's self-identified needs
- Host Green Infrastructure Workshop to design "shovel ready projects"
- Help find funding sources to implement

Why Green Infrastructure?

Community Benefits

- Cost Effective
- Human Health Benefits
- Recreation
- Beautification
- Educational Opportunities
- Job Opportunities



Environmental Benefits

- Habitat Improvement
- Habitat Connectivity
- Improved Water Quality
- Biodiversity
- Promote Native Species



Joe Ryan/The Diamondback



Photo Credit: Montgomery County, Maryland

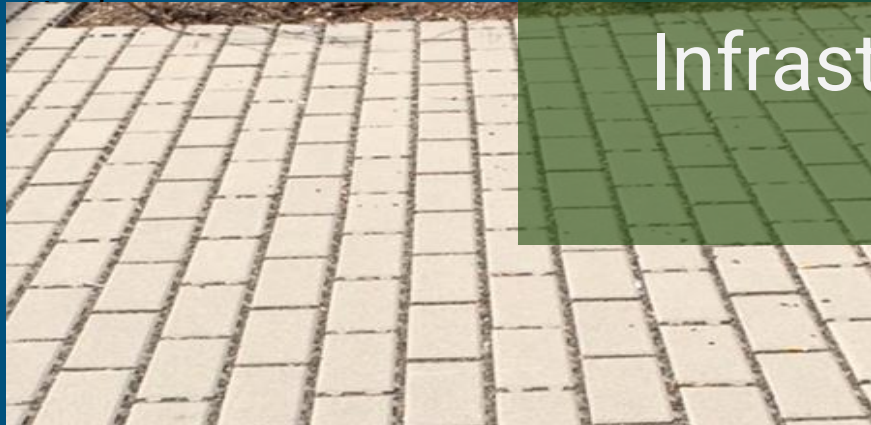


Photo credit: EPA

Green Infrastructure



Photo Credit: National Park Service

Town Selection Criteria

Tier 1 Layers

- Sea Level Rise
- Flood Hazard
- 2019 Percent Low-income
- 2019 Percent Minority
- Aquatic Core Habitat Networks
- Terrestrial and Wetland Core-Connector Network
- USFWS National Wetlands Inventory

Tier 2 Layers

- Marsh Migration Zones
- Wastewater Discharge
- SAV abundance
- Brook Trout Catchment
- Brook Trout Probability of Occurrence
- Protected Lands 2018

Middle Peninsula, VA



Cambridge, MD

Preferred Alternative

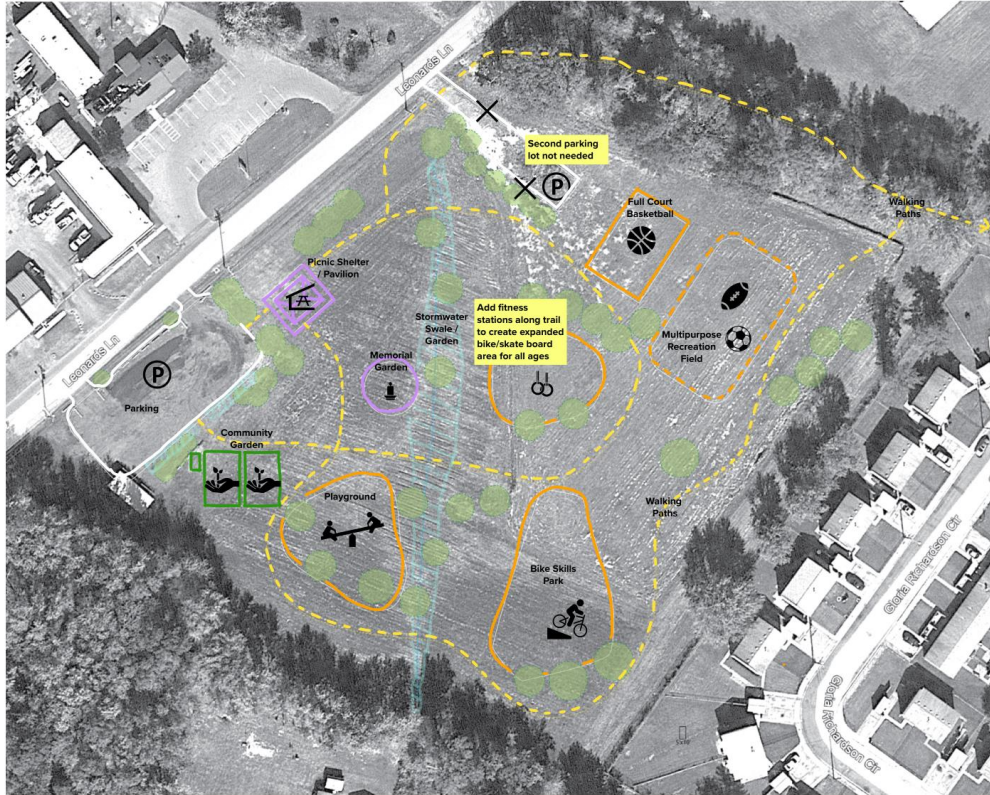
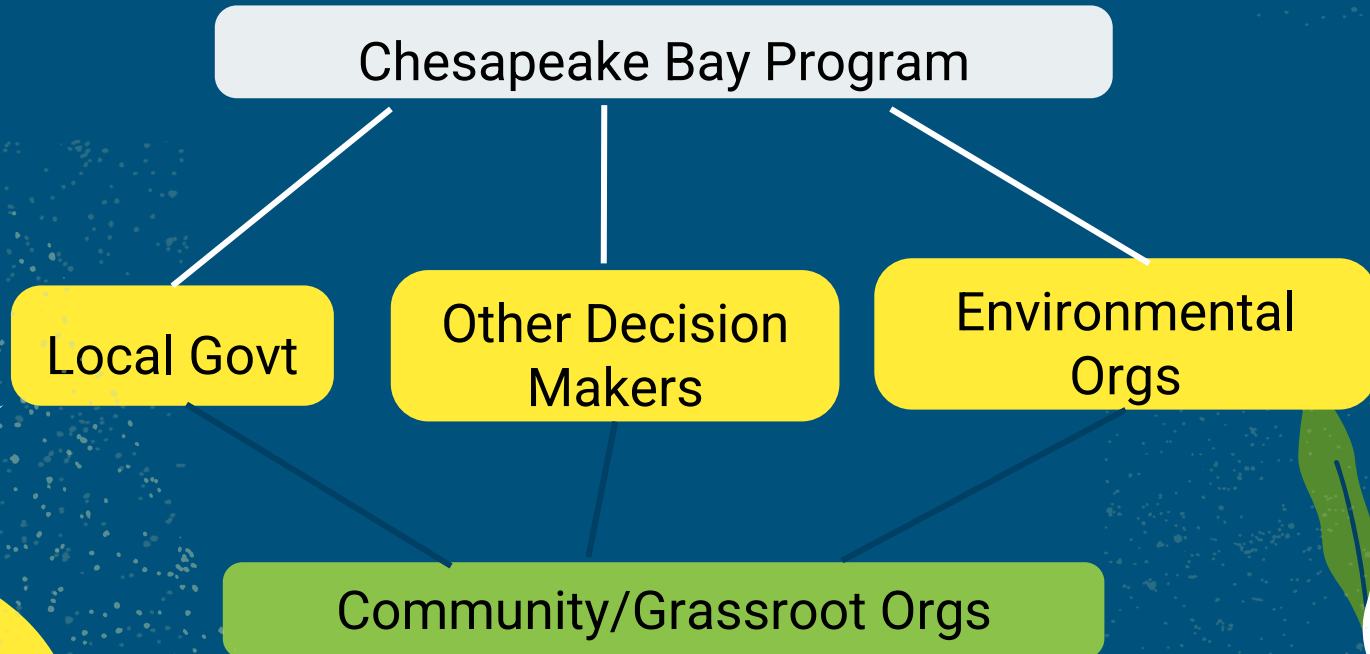


Photo Credit: Choose Cambridge

Williamsport PA



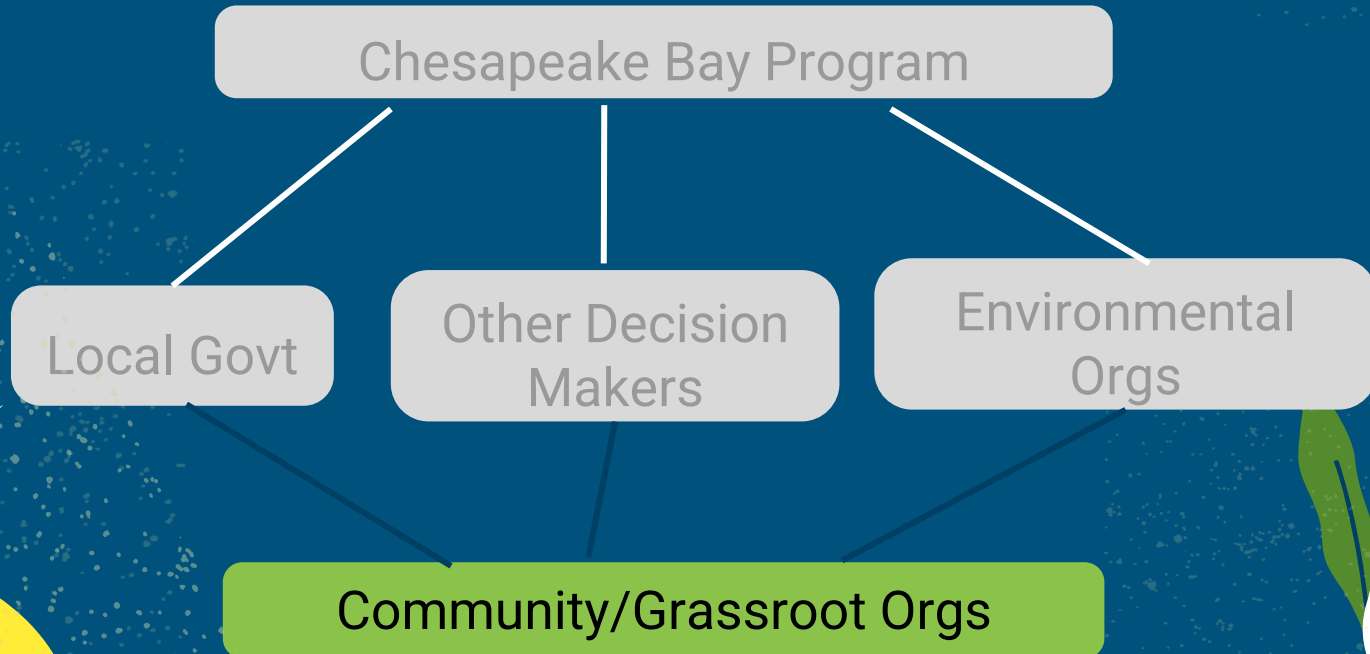
Outreach Structure



Barriers & Challenges



Outreach Structure



Challenges



Implementation Funding (Lack of)

Steering Committee Structure

Engaging Community

Going Green

Solutions



Creating Network for Funding Support

Restructure and Reorganize

Community First

Thinking Green

Where do we
come in?



Discussion

How do you feel this project ties into our ongoing discussion about the role of our workgroup?

Where do you see commonalities between efforts you're familiar with?

How do we work to mitigate when outreach and engagement projects take a wrong turn?



Masonville Cove

Thank You

Any Questions?

yancy.briana@epa.gov

