



Overview of Conservation Goals Mapping

**Advancing the New Case for Land and
Landscape Conservation**

Farms

Forests

Habitat

Heritage

Health



All interconnected:

Vibrant economy

Strong communities

Healthy people

Working farms/forests

Thriving native wildlife

Clean water

Healthy watersheds

Shared heritage

Recreation

Quality of life



Set Long-term Goals



**Document & Illustrate
Them**



‘Grow the Pie’ Strategies



• Track Progress



—

**Existing
Protected
Lands**

=

**Long-term
Conservation
Need**



Forests

Protect the Chesapeake watershed's most ecologically and economically valuable forest land from conversion--headwater and riparian forests, large forest blocks, woodlots providing multiple values, and forests conducive to timber harvests.



Forests

Developed in
collaboration
with CBP Forestry
Work Group

Headwater and Riparian Forests:

Headwater forests: Catchments with first-order stream in the top half of elevation values.

Riparian forests: Areas within a 10 meter buffer of streams.

Large Forest Blocks: Blocks of contiguous forest 500 acres or larger.

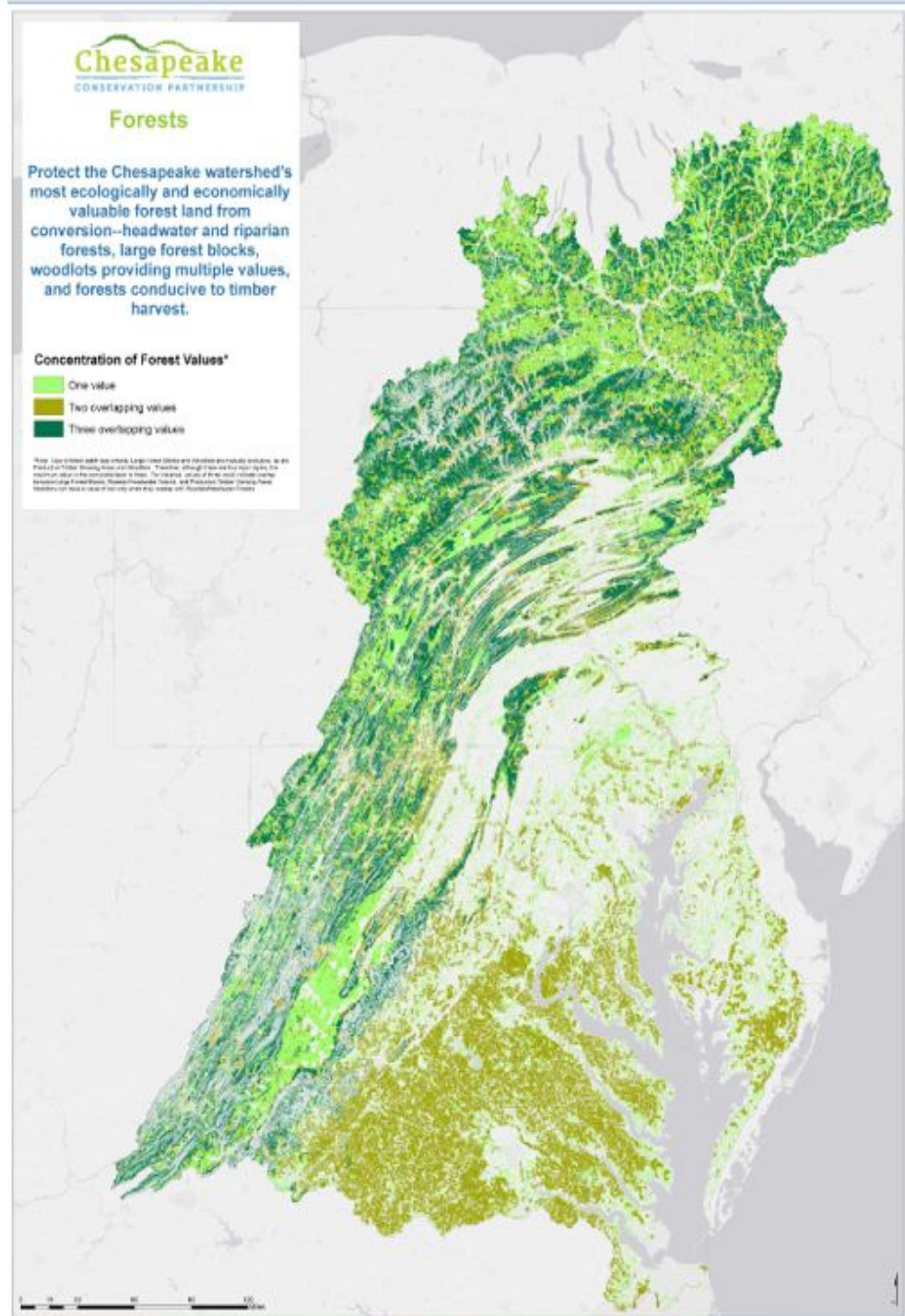
Multiple Value Woodlots: Blocks of contiguous forest between 50 & 500 acres.

Forests Conducive to Timber

Harvests: Areas of harvestable contiguous forest blocks 500 acres or larger with less than 30% slopes.



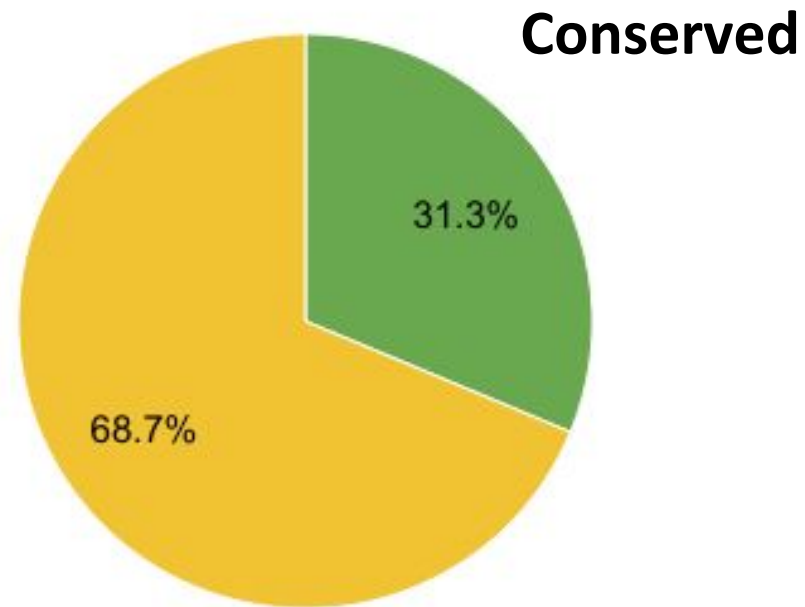
- Improved cartography
- Refined headwaters patch size minimum





Total Identified 22,124,849 ac.
54% of watershed


Forests



<http://www.landscape.org/chesapeake/Priorities/Forests/>


← → ↻ ⌂ ⓘ www.landscape.org/chesapeake/Priorities/Forests/ ☆ [Email] [Calendar] [19397] [G] [Social] [PDF] [More]

Apps Quicktime JLD To Do List.xlsx - G Northeast Region Partnerships - Northe joel lynch nps - Googl View Associated Vouc »





Sign In / Register ▾ About LandScope Contact Us

INTRODUCTIONEXPLORE PLACES & TOPICSFOCUS & PLANTAKE ACTIONCONNECT & SHAREGO TO THE MAP



LandScope Chesapeake

Home » Focus and Plan » Priority Places » LandScope Chesapeake » Conservation Priorities » Forests

 Print  Share ▾

LandScope Chesapeake Home

Conservation Summary

Conservation Priorities

- Habitats
- Farms
- Human Health
- Heritage
- Forests**

Featured Places

Protected Areas

Conservation Partners


Chesapeake Bay States

Conservation Priority: Forests


Our Goal:

Protect the Chesapeake watershed's most ecologically and economically valuable forest land from conversion--headwater and riparian forests, large forest blocks, woodlots providing multiple values, and highly productive timber growing soils.


Forests cover about 60% of the watershed, provide over \$24 billion in ecological services, and provide \$22 billion in forest products industry output each year. Yet, forest loss and fragmentation from development threatens up to 5.5 million acres of the most valuable forests. Science shows that streams and rivers degrade when the percent of forest cover in a sub-watershed drops below 70%. Conserving our region's forests is key to maintaining wildlife, drinking water supplies, water quality, recreation, tourism and economic sustainability.



From our Content Partner



Locator Map [GO TO THE MAP](#)



Under the Surf...docx ^

Appendix II Finalpptx ^

NPS CC OFFER S....pptx ^

Show all X

4:18 PM 4/4/2017

What's Next?

March 1.1

Spring - Summer

