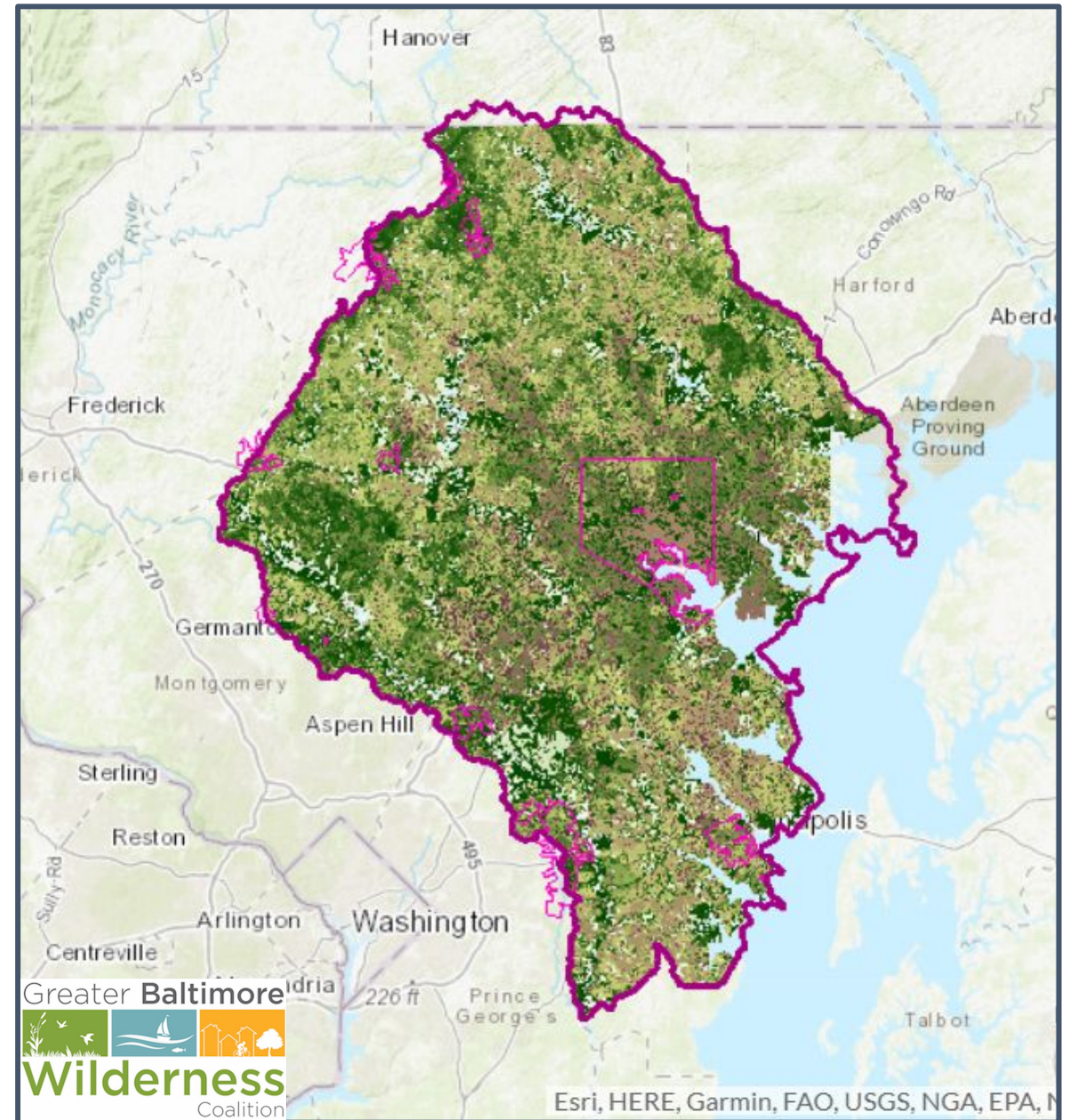
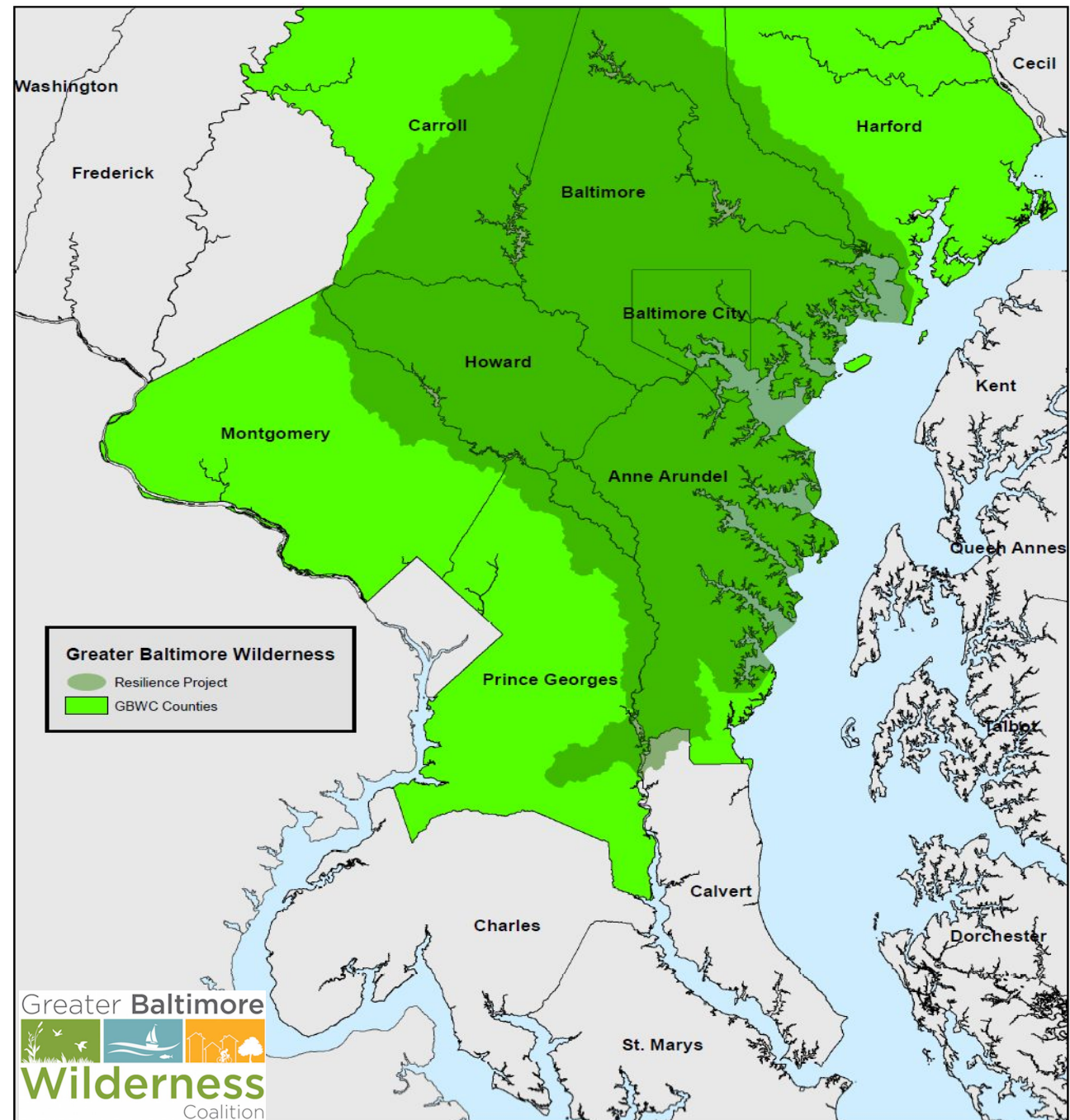




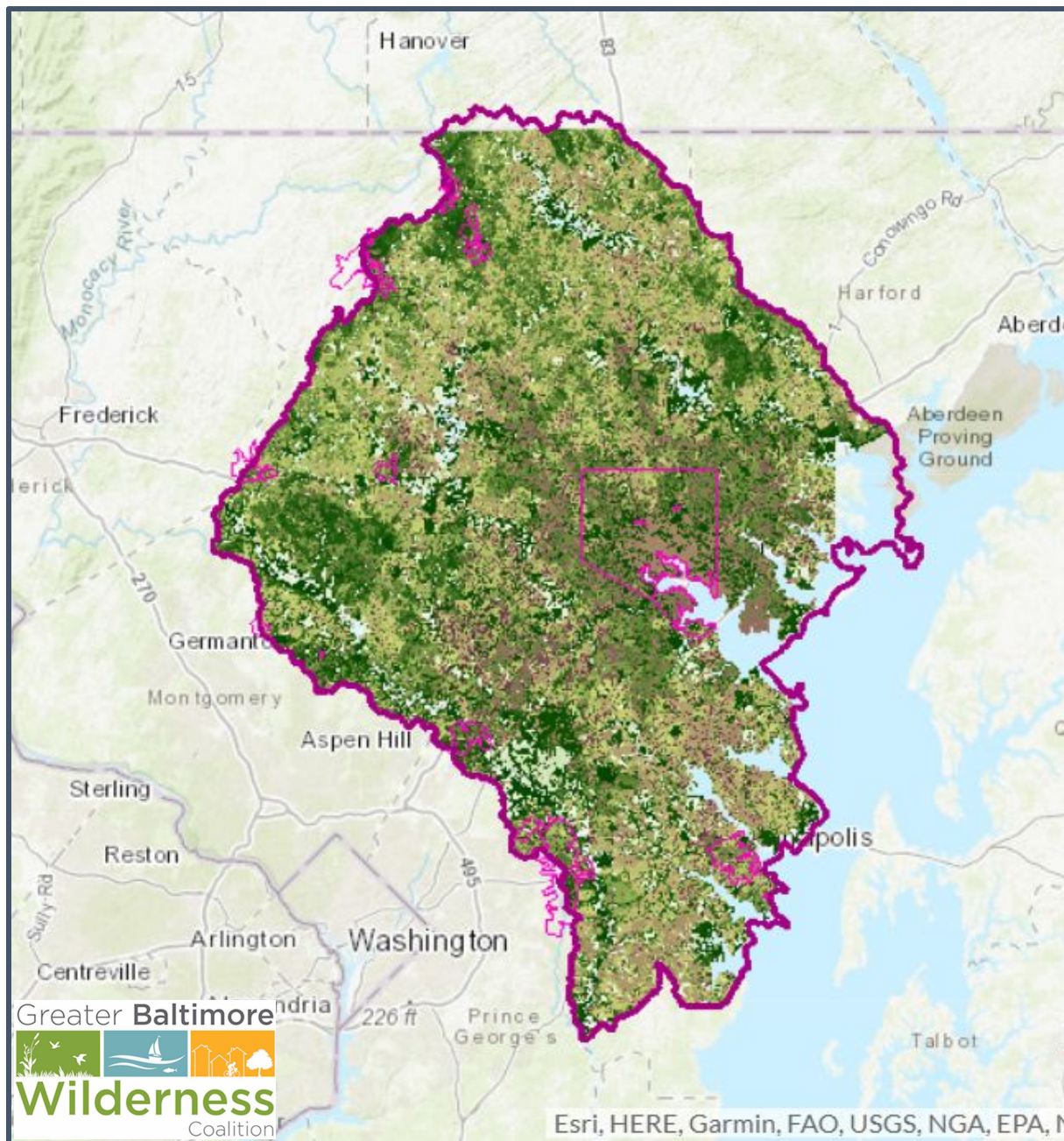
A united, catalytic, collective  
committed to the restoration and  
preservation of a  
thriving, resilient and equitable  
green infrastructure network  
throughout central MD



- Gunpowder, Patapsco and upper Patuxent
- 7 counties and Baltimore City
- 3,200 sq. mi., 4.7 million people





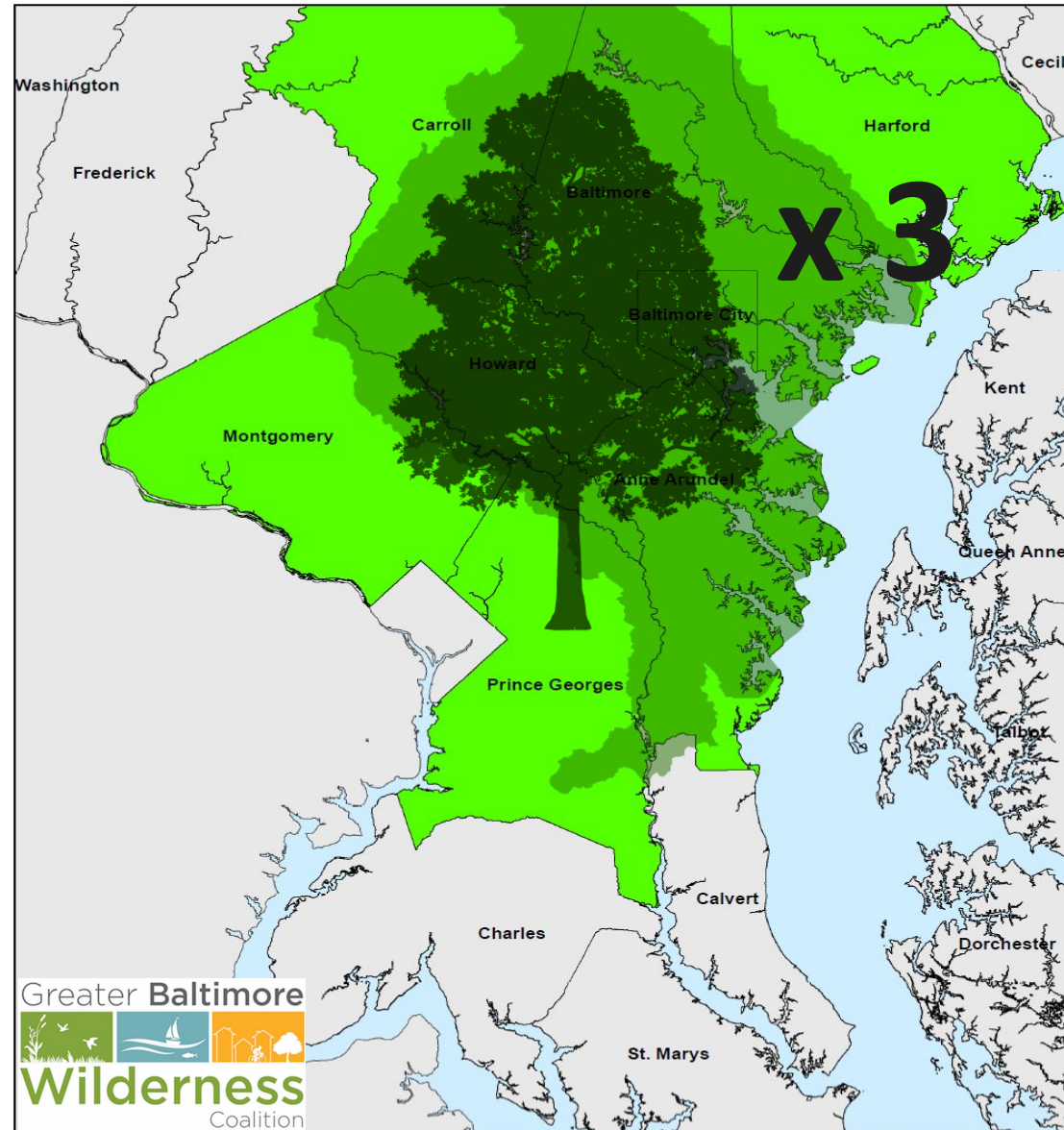


## Resilient Strategy Opportunities:

- ☐ No strategy map
- ☐ Protect Natural Resources ?
- ☒ Enhance and Restore Tree Canopy ?
- ☐ Implement Multi-Benefit Green Stormwater Infrastructure ?
- ☐ Implement Multi-Benefit Green Stormwater Infrastructure - Baltimore ?
- ☐ Protect Critical Infrastructure ?
- ☐ Defend the Coast: Preservation ?
- ☐ Defend the Coast: Restoration ?
- ☐ Defend the Coast: Enhancement ?

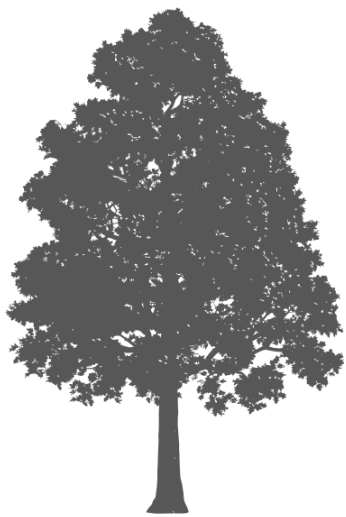
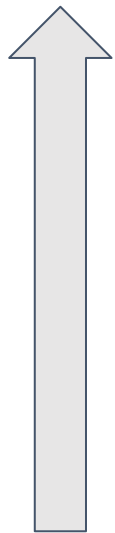


# Planting the Future

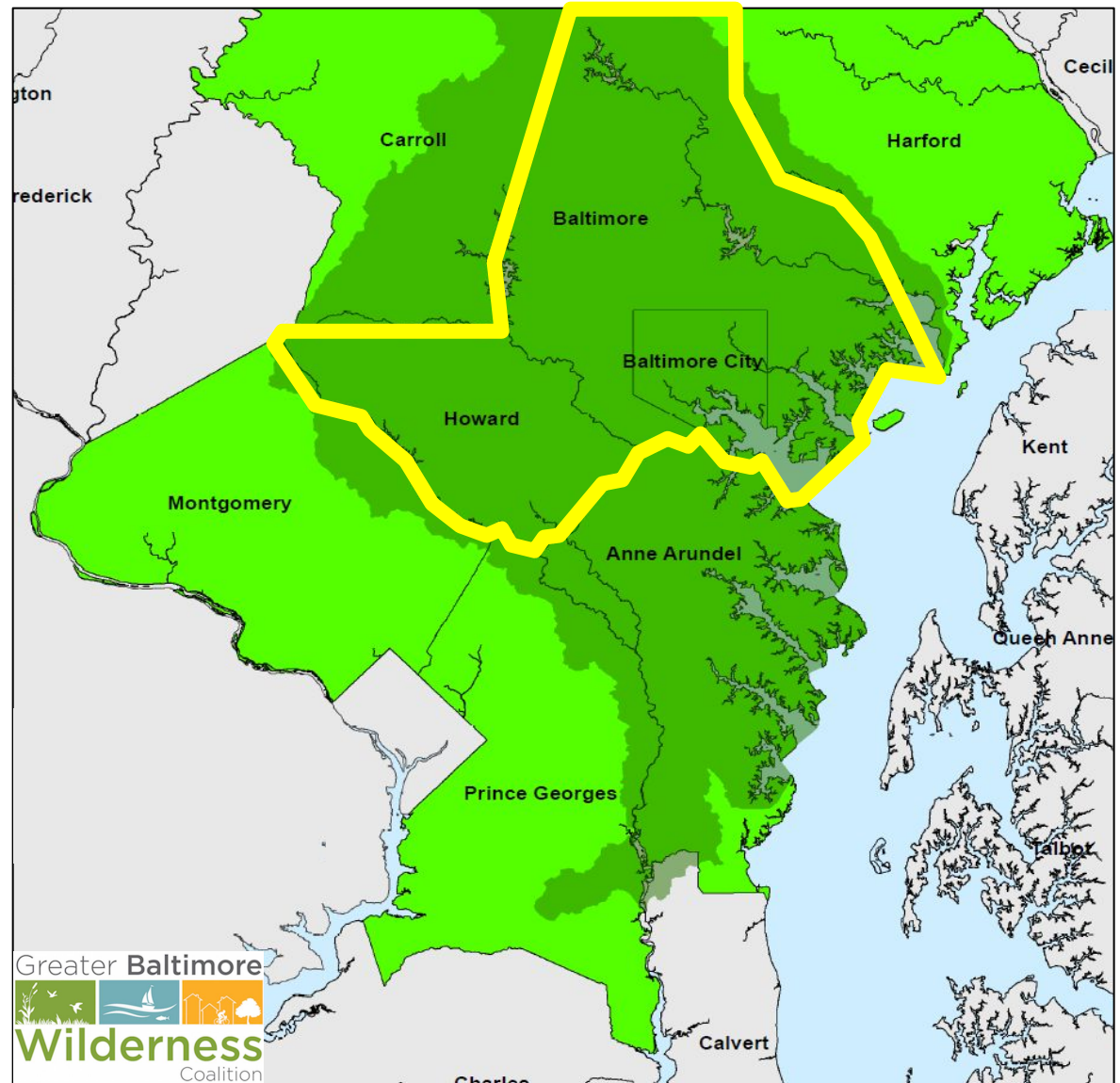




75,000



25,000



## Annually Green Bay Metro Area public street trees provide²...

  
STORMWATER  
RUNOFF  
REDUCTION  
**\$1.78 Million**

  
PROPERTY  
VALUE  
INCREASE  
**\$2.02 Million**

**\$6.14**  
Million per Year  
TOTAL BENEFITS

  
CO<sub>2</sub> REDUCTION  
**\$233,998**

  
AIR QUALITY  
IMPROVEMENT  
**\$296,206**

  
ENERGY SAVINGS  
**\$1.81 Million**

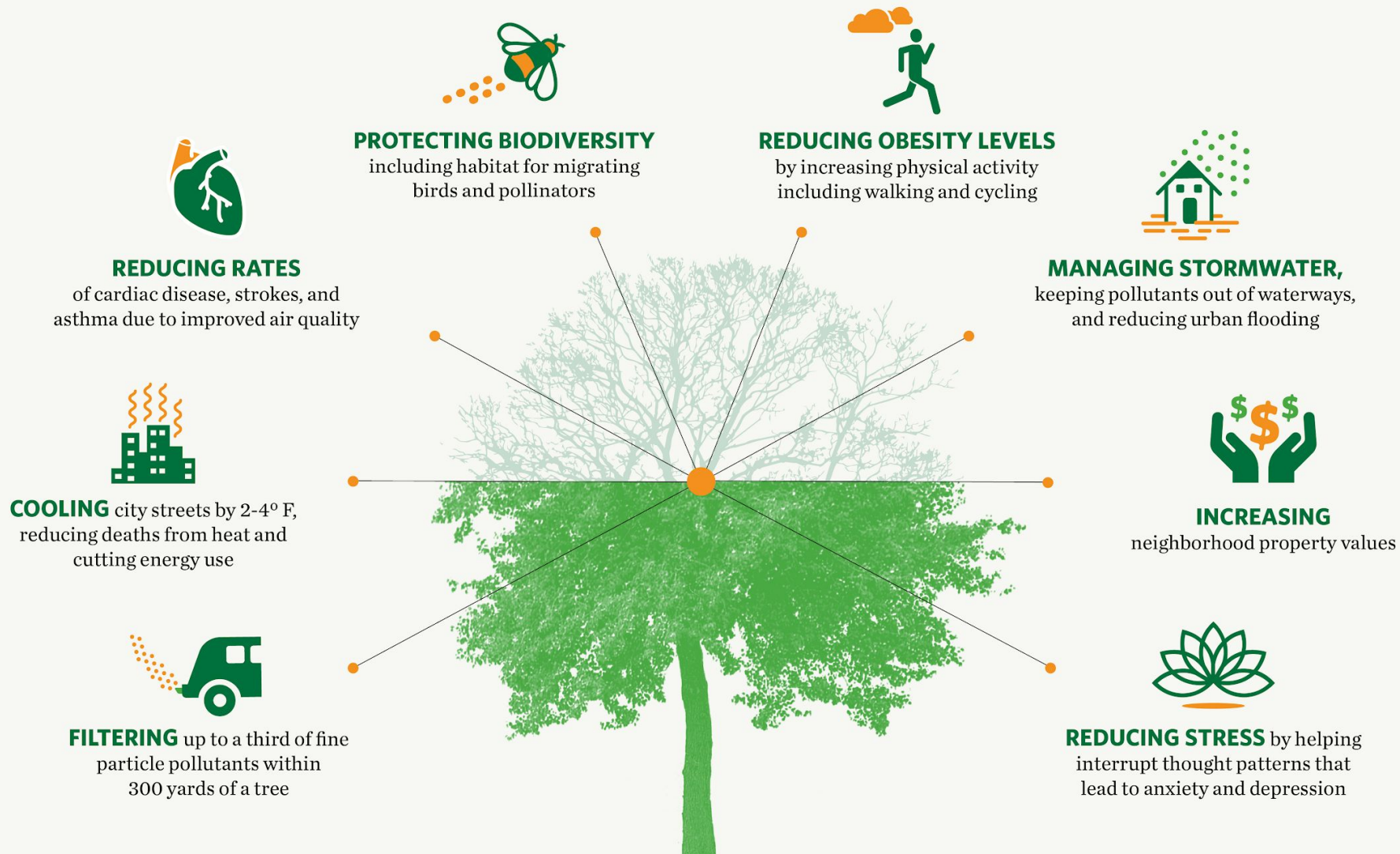
25% Norway Maple  
12% Green Ash  
10% Linden  
7% White Ash  
7% Honeylocust

Top 5  
Street Tree  
Species



# Benefits of Urban Trees

*Research has linked the presence of urban trees to...*

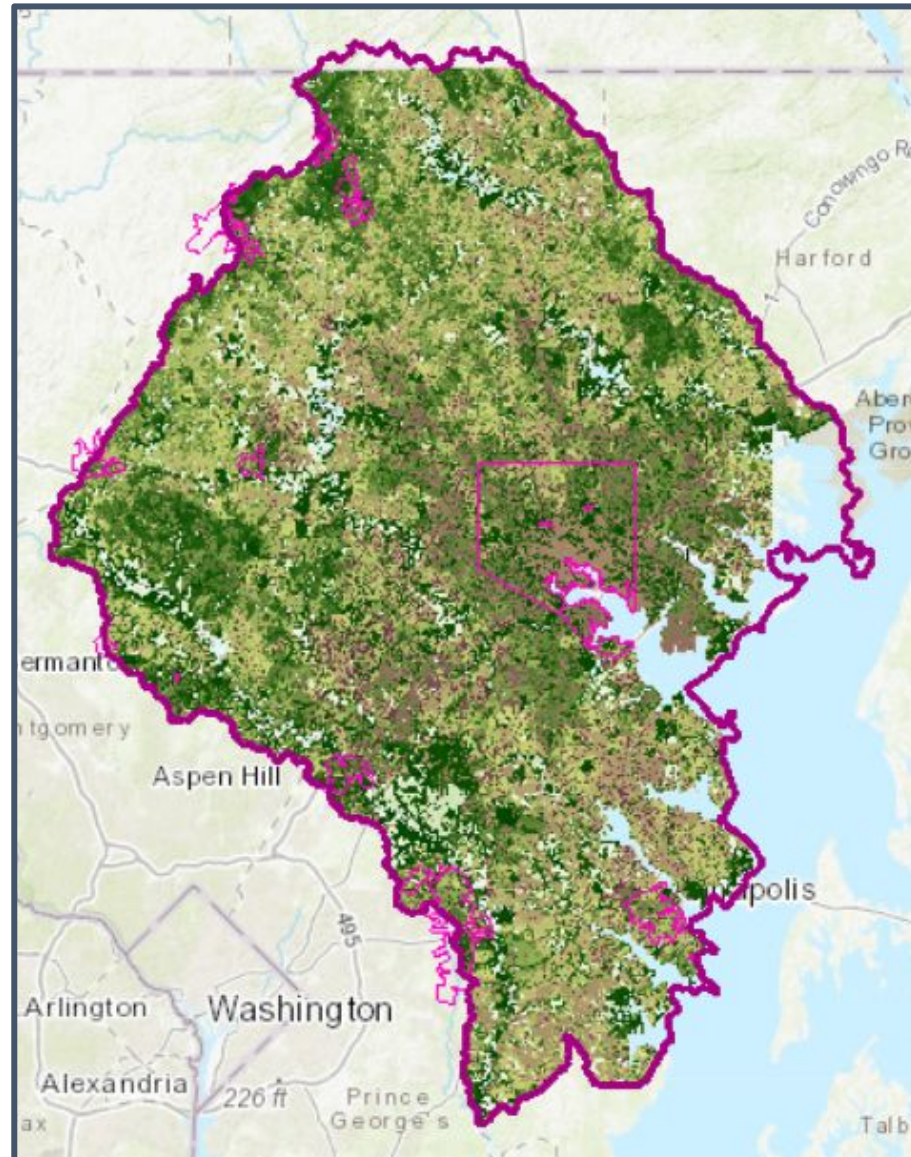




# Collaboration & Trust

- **Finance & Structure** - Review and refine Coalition structure, policies and procedures, financial plan, etc.
- **GI Mapping & Tracking** - Developing a system to map, track, and value regional GI opportunities and projects
- **Membership & Communication** - Develop most effective ways to recruit and effectively communicate with members
- **Nature City Forum** - Annual event planning including venue, theme, partners, advertising, etc.
- **Workforce Development** - Identifying green workforce development programs and funders, and exploring opportunities to unite and expand efforts
- **Planting the Future** - Determine best strategies to implement and amplify program, track and share results, maximize MS4 credits, build additional funding strategies, etc.

# Mapping



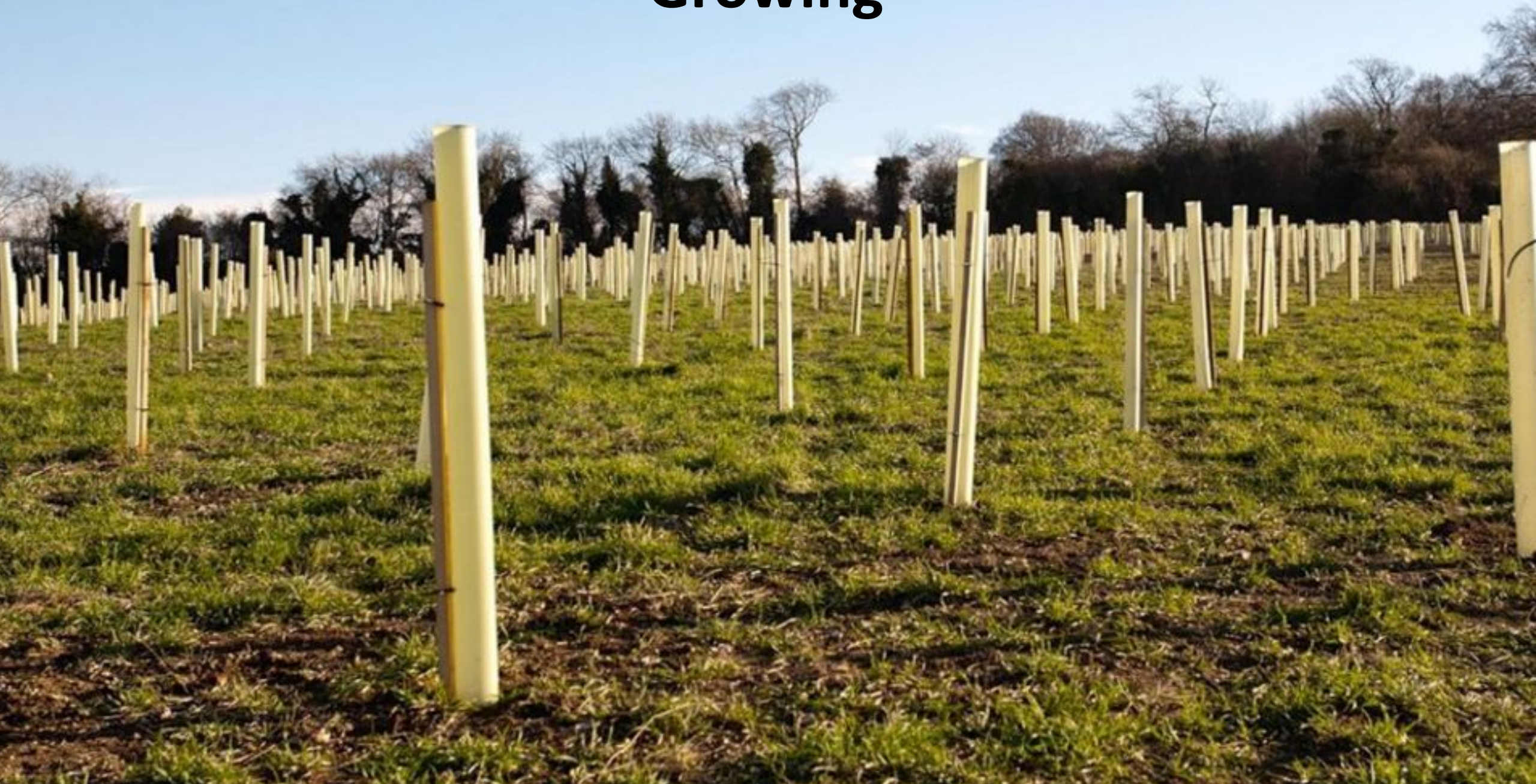


# Marketing





# Growing





# Green Jobs



**Civic Works**  
— CENTER FOR —  
**SUSTAINABLE  
CAREERS**



**PARKS &  
PEOPLE**  
FOUNDATION

**TAZO  
TREE  
CORPS**



**CBLP** **CHESAPEAKE BAY**  
Landscape Professional

**living**  
**classrooms** est. 1985  
learning  
by doing




**GROUNDWORK**  
**USA**



BALTIMORE  
**TREE TRUST**  
Transform Baltimore with trees!



An aerial photograph of a lush, dense green forest. A dark, winding river or stream flows through the center of the forest, creating a serpentine path. The trees are vibrant green, and the overall scene is a dense canopy of foliage.

Ashley Traut  
atraut@baltimorewilderness.org  
www.baltimorewilderness.org  
443-827-2548