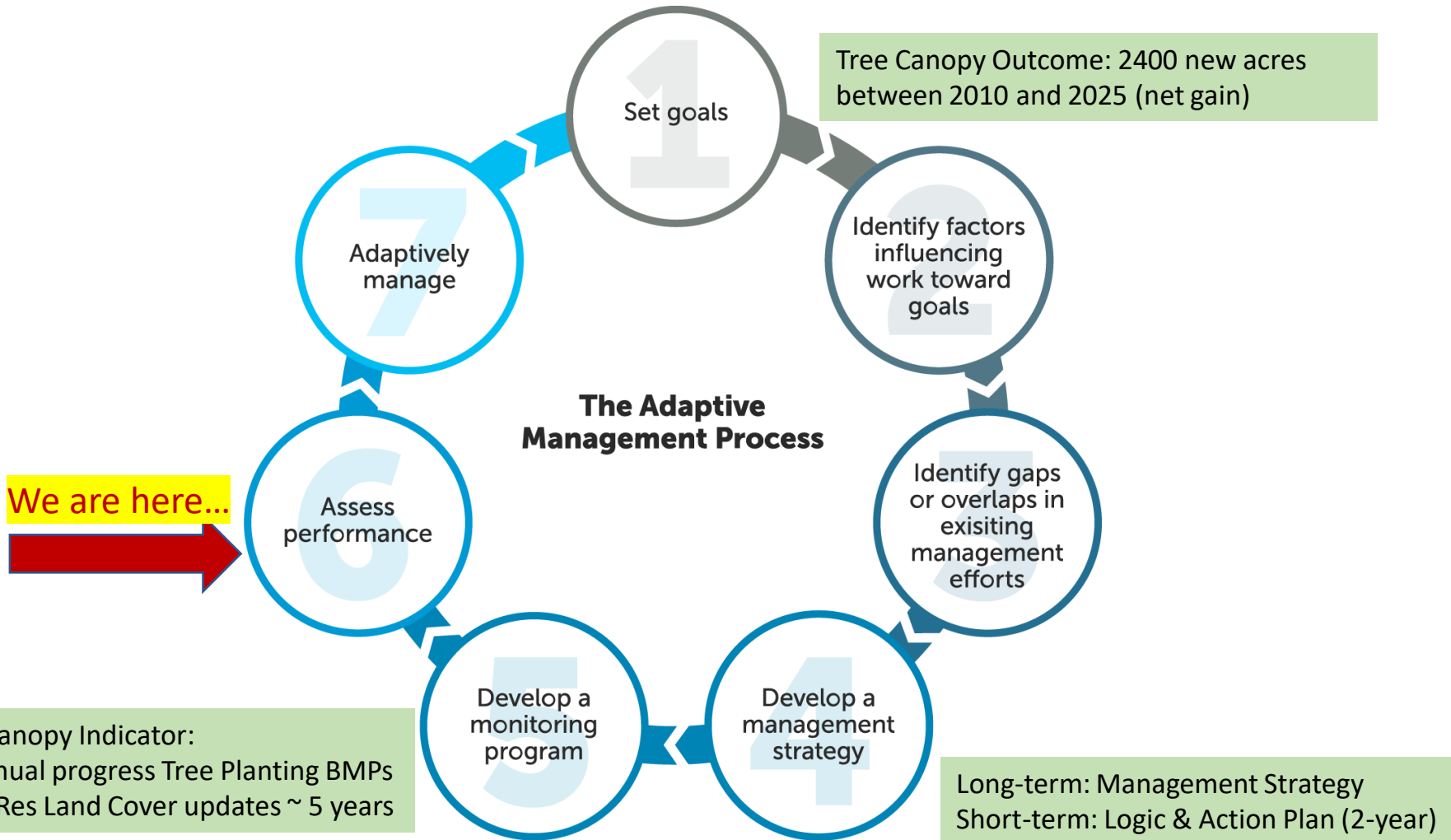




# Tree Canopy [discussion draft]

*Julie Mawhorter,  
USDA Forest Service  
Tree Canopy Coordinator*



*Through the Chesapeake Bay Watershed Agreement, the Chesapeake Bay Program has committed to...*



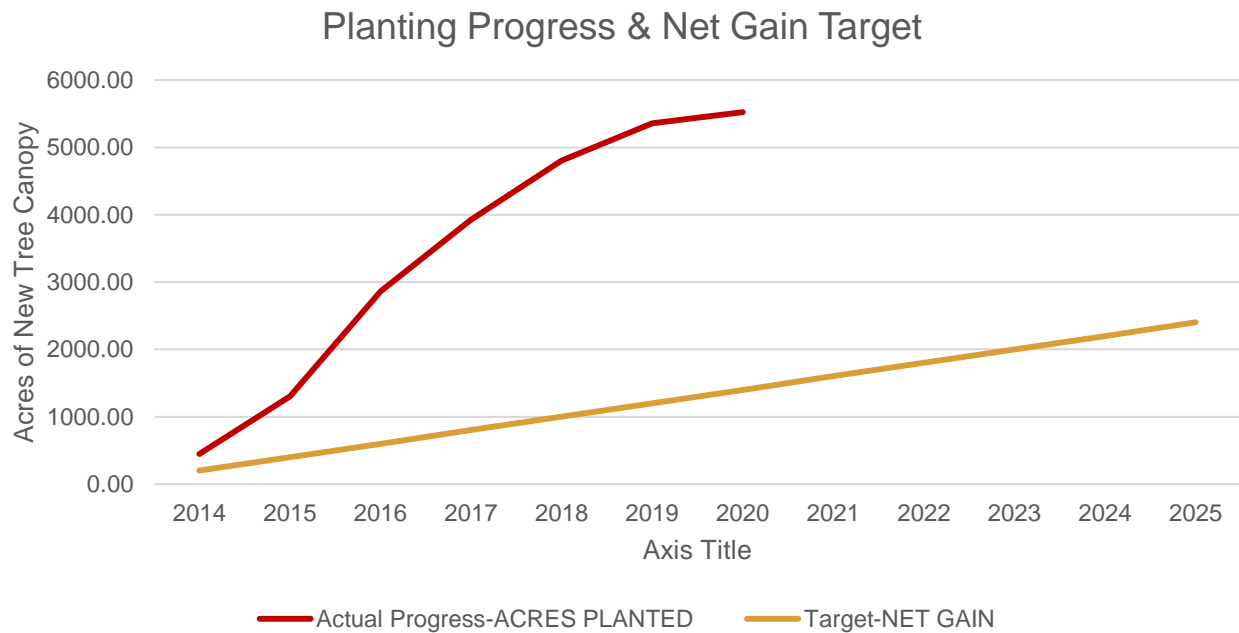
**Goal:** *Tree Canopy*

**Outcome:**

Continually increase urban tree canopy capacity to provide air quality, water quality and habitat benefits throughout the watershed. Expand urban tree canopy by **2,400 acres by 2025.**



## What is our Expected and Actual Progress?

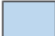






## What is our Expected and Actual Progress?

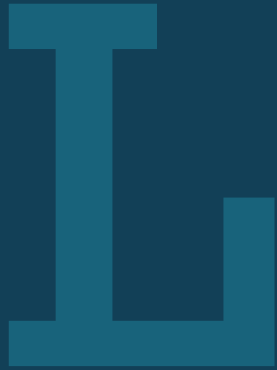
### Maryland Tree Canopy Change: Preliminary Analysis

County	Tree Canopy Gain (acres)			Tree Canopy Loss (acres)			
	Total	In 100ft Stream Buffers	In Critical Areas	Total	In Urban Areas	In 100ft Stream Buffers	In Critical Areas
Anne Arundel	188.24	5.33	78.68	2,543.78	1,860.08	83.04	425.51
Montgomery	656.14	52.06	-	6,364.05	4,807.08	666.69	-
Prince George's	518.15	23.42	44.38	7,567.04	5,397.82	649.29	334.24
Calvert	899.24	24.29	117.67	1,566.72	643.00	28.28	134.22
Charles	1,478.35	69.31	65.89	2,529.30	634.85	66.38	87.19
St. Mary's	1,524.98	75.11	266.67	1,897.06	318.22	42.82	208.71
Dorchester	2,111.68	151.91	517.18	1,730.68	26.35	68.92	429.74
Somerset	4,778.99	123.04	626.04	1,258.22	17.18	44.45	123.11
Wicomico	3,703.89	157.95	206.13	2,337.47	288.33	76.60	181.30
Worcester	6,900.44	587.63	350.19	3,514.53	119.08	226.46	193.86
TOTAL	22,760.11	1,270.03	2,272.83	31,308.86	14,111.98	1,952.93	2,117.86

 = BW Corridor

 = Southern MD

 = Lower ES



# Learn

*What have we learned in the last two years?*



## Successes – Summit 2.0

### You're Invited!

Save the date for the 2020 Chesapeake Tree Canopy Summit

**When:** Tuesday, January 14, 2020, 10:00 am to 4:00 pm

Wednesday, January 15, 2020, 9:00 am to 3:00 pm

**Where:** [Patuxent Research Refuge - U.S. Fish and Wildlife Service](#)

National Wildlife Visitor Center

10901 Scarlet Tanager Loop

Laurel, MD 20708

[Register Now!](#)



#### Summit Objectives:

- Build participant knowledge and understanding, and advance individual community tree canopy efforts, through hands-on training, facilitated discussion, and presentation by subject matter experts;
- Inform future state and sub-regional trainings and catalyze collaboration with new cross-sector partners; and
- Identify opportunities for continuous improvement in approach to meeting tree canopy goals.







## Successes – Summit 2.0

### ***BOLSTER*** Funding & Partnership



#### Financing Urban Tree Canopy Programs *Guidebook for Local Governments in the Chesapeake Bay Watershed*

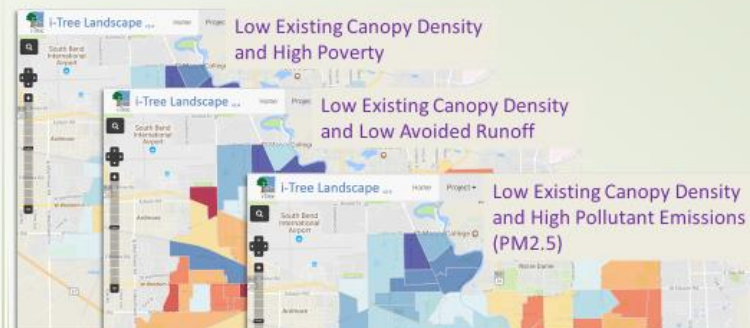
Prepared by  
the Environmental Finance Center at the University of Maryland  
and the Alliance for the Chesapeake Bay

MARCH 2019

### ***STRENGTHEN*** Policy & Ordinances



## ***INCREASE*** Technical Capacity & Knowledge Inform Community Decisions and City Priorities



### ***EXPAND*** Community Outreach & Education



#### Trees, Equity and Cultural Competency



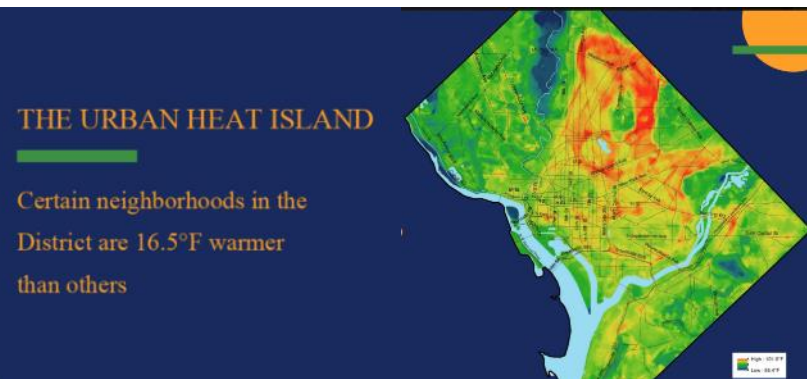


# ACTION 1.1 Implement state programs and grants to incentivize tree canopy progress



## Successes – States

- Virginia
- Delaware & Maryland



### My Tree Counts

A Community Tree Map

Every tree planted makes a difference to the health of our communities and the Chesapeake Bay watershed. The Virginia Department of Forestry (VDOF) and partners want to highlight tree planting projects from across the state.

Our Tree Stories | How My Tree Makes a Difference | Add Your Tree!

Carver Tree Project

Cary Elementary Food Forest

DELAWARE TREE STEWARDS

MARYLAND FOREST SERVICE Tree-Mendous Maryland TREE STEWARDS

- DC



## Successes - States

- West Virginia
- New York



BAY JOURNAL

Pennsylvania initiative to convert 10,000 acres of lawns into meadows, forests

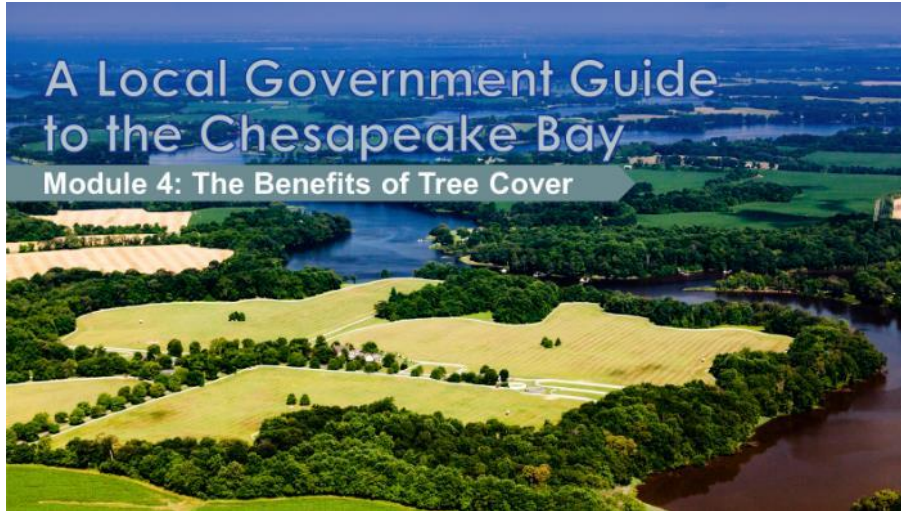
- Pennsylvania

This backyard in Lancaster County, PA, is slowly being turned into woods.



## Successes – Cross Outcome

### Local Leadership



## Environmental Literacy

### Trees and Schools: Growing the Connection A Resource Guide for Chesapeake Communities



*Photo: Tree planting with students at St. Anne's School in Delaware; courtesy of Delaware Forest Service*

Draft Version for Stakeholder Input, December 2020

Written by Maya Claggett in collaboration with the Chesapeake Bay Program Forestry Workgroup. Please send inquiries or suggestions for future versions of this Guide to [Julie.Mawhorter@delaware.gov](mailto:Julie.Mawhorter@delaware.gov), Chesapeake Tree Canopy Coordinator by March 1, 2021.

<https://chesapeaketrees.net/category/schools/>



## Challenges & Lessons Learned

- COVID Impacts
- Local government capacity/incentives to maintain and expand tree canopy
- Delayed Workplan Action: Funding & Policy Roundtable





## On the Horizon

- New Land Cover Data & Analysis (2021)
- Latest Research on Tree Canopy, Urban Heat & Environmental Justice
- Continued COVID Impacts
- Climate Initiatives focused on trees (e.g. Trillion Trees)



# Adapt

*How does all of this impact our work?*



## Based on what we learned, we plan to ...

### ▪ *Assessing and Communicating Tree Canopy Status & Change to Stakeholders*

In 2021-2022, working with the new land cover and change analysis data will be a major focus, in order to test and refine our Tree Canopy Indicator and distill the most useful findings to inform future goals, policy and strategies. We will develop a Bay-wide summary report on Tree Canopy status and change that will serve as a springboard for convening the Funding & Policy Roundtable mentioned above. In addition, through a supplemental US Forest Service grant to the Chesapeake Conservancy, and with input from the Forestry Workgroup, we will be developing digital communication products to share the latest tree canopy/land cover data and change analysis at the local scale (e.g. county fact sheets, municipal where feasible). These efforts will be closely coordinated with the Local Leadership Workgroup, so that we can also take advantage of opportunities to engage and educate newly elected local officials in 2022 and beyond.





## Based on what we learned, we plan to ...

### *Sharing data, tools & best practices for Tree Equity*

▪ We will work with CBP's new Data Dashboard tool (environmental justice components) and develop a **toolkit of data, tools and resources** to support local tree equity initiatives. Having the data to help target efforts is important, but we are still wrestling with big questions around how to properly engage and collaborate with communities and ensure that trees planted will be sufficiently maintained. In these low canopy/highly paved areas, we need to engage different agencies and funding streams to help with removing impervious surfaces and building viable planting spaces so that the trees can survive and thrive. Although our 2020 GIT proposal was not selected for funding, we will work with stakeholders to further **refine and develop training and technical assistance needs and pursue funding opportunities to deliver these**. These efforts will be pursued through participation and alignment with CBP's DEIJ actions and Diversity Workgroup collaboration.



## Based on what we learned, we plan to ...

### *Enhance virtual learning and other accessible training and technical assistance; plan for a post-COVID biennial Tree Canopy Summit in 2022*

While we are still in “virtual mode” due to COVID, we will look for opportunities to offer additional webinar trainings and engagement opportunities in 2021 and beyond. At the 2020 Tree Canopy Summit, we heard significant interest in continuing these periodic regional gatherings on a regular (e.g. biennial) basis, so we will scope out opportunities to host the next one in 2022, including virtual options for those who cannot travel to or attend long face-to-face meetings. In addition, we need to plan for gatherings where we can cross-pollinate with other partnership efforts like local government, schools, communications, etc. so that we can build tree canopy more into those efforts.



## Based on what we learned, we plan to ...

### *Continue building on prior partnership work around priority issues and needs*

While this is not a change in focus, we want to emphasize the importance of continuing and expanding our collaboration with partners around key priorities: local leadership/engagement, DEIJ with a focus on health, heat and resilience, communication plan/strategies, stormwater/WIP implementation, and school-based opportunities.



# Help

*How can the Management Board  
lead the Program to adapt?*



## Help Needed

### Some ideas to get us started...

- Continue to grow DEIJ investments in communities, with tree equity as a priority
- Participation in the Funding & Policy Roundtable – sending the right representatives when the time comes (we will provide briefing/details)
- Continue and grow the support for critical state urban and community forestry programs, through leveraging other available programs (e.g. public health, environmental justice, stormwater/water quality/infrastructure, climate resilience, sustainability, environmental education, etc.)



# Discussion