

Chesapeake Working Lands Conservation Strategy



FWG UPDATE 11/6/13

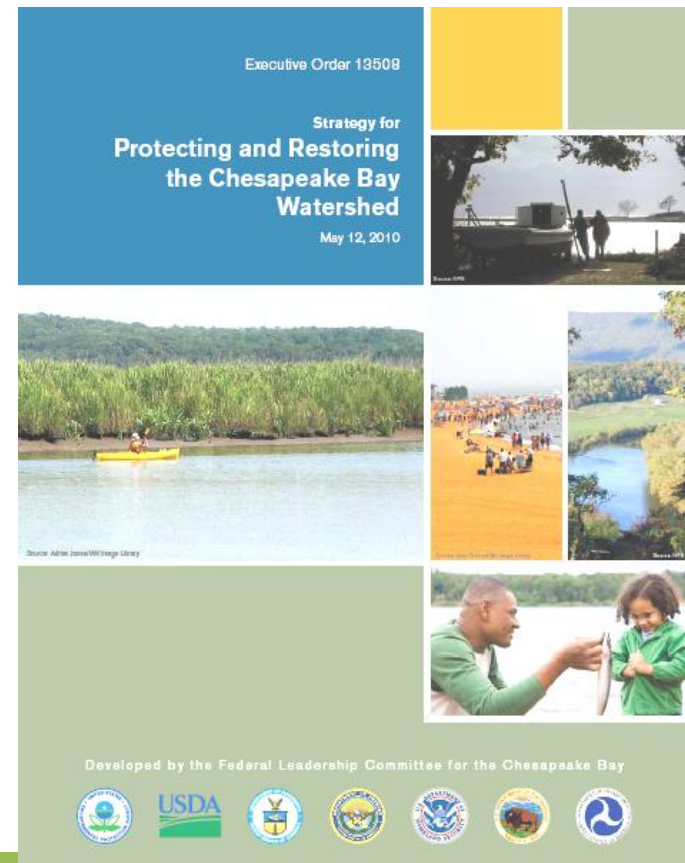


CB Executive Order Strategy - 2010

LAND CONSERVATION OUTCOME: Protect an additional 2 million acres of lands throughout the watershed currently identified as high conservation priorities at the federal, state or local level by 2025, including 695,000 acres of forest land of highest value for maintaining water quality.

USDA action:

...develop a Strategy that considers incentives for agricultural land, forestland and open space conservation



Strategy Process



- FS/NRCS Strategy Team
- May 2012 – Kickoff webinar
- Summer 2012 – Forestry team calls
- Spring 2013 – CB NRCS easement staff call
- Summer-fall 2013 – State-level meetings

Aiming for Draft Strategy by Jan 2014 for broader review and input

Strategy Topics



- Significance of working lands for CB restoration
- Update on CB land conservation progress
- Review federal easement programs
 - NRCS – FRPP & WRP
 - Forest Legacy Program
 - Dept. of Defense – REPI Program
- Showcase examples of innovative state-local-ngo programs and partnerships

Strategy Topics – cont.



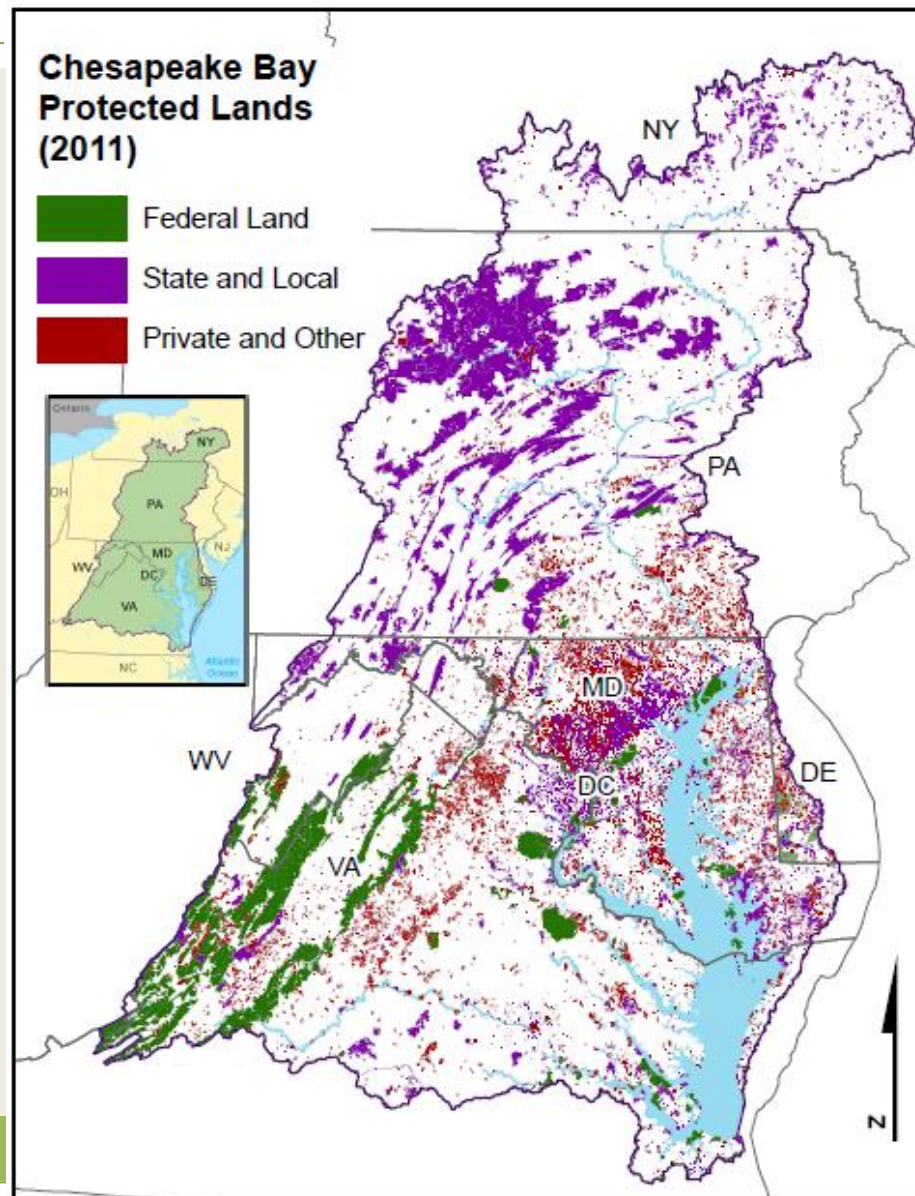
- Showcase examples of innovative state-local-ngo programs and partnerships
 - Leveraging federal-state-local funding
 - Targeting priority/high value areas at different scales
 - BMPs/stewardship on conserved areas
- Tie in with other CB efforts
 - NPS-Large Landscape Conservation, Landscape
 - Crediting conservation – CBC report

Land Conservation in the Bay

CB Protected Lands (As of 2011)	Protected Acres	Protected Forest	% Forest
Federal	2,211,921	1,855,603	84%
State and local	4,190,668	3,578,059	85%
Private and other	1,610,543	589,220	37%
TOTAL	8,013,132	6,022,881	

By State - CB Only

	Protected Acres	Protected Forest	% Forest
DE	95,581	28,527	30%
MD	1,247,570	495,644	40%
NY	299,745	256,230	85%
PA	3,231,252	2,781,893	86%
VA	2,771,257	2,142,878	77%
WV	357,155	317,711	89%
TOTAL	8,002,560	6,022,883	75%

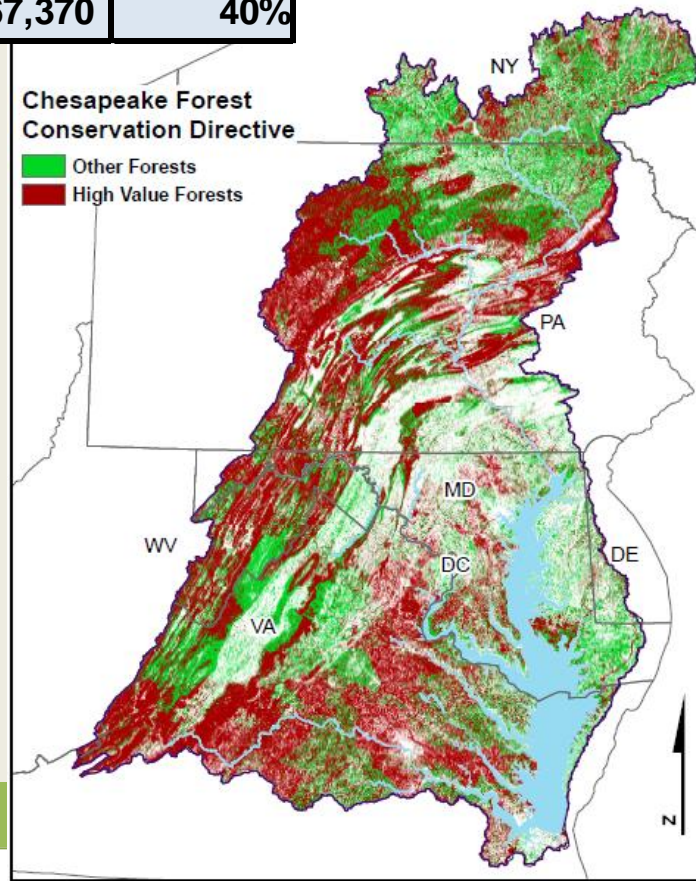


Forest Directive Goals & Progress	2012 Goal (new acres)	2020 Goal (new acres)	Progress: New forest protected 2008-2012	% High Value
Delaware	5,000	15,000	7290	-
Maryland	96,000	250,000	36,780	52%
New York	5,800	15,000	3,380	58%
Pennsylvania	38,500	100,000	28,630	90%
Virginia	135,000	315,000	184,640	30%
West Virginia	na	na	6,650	89%
TOTAL	280,300	695,000	267,370	40%

CHESAPEAKE EXECUTIVE COUNCIL

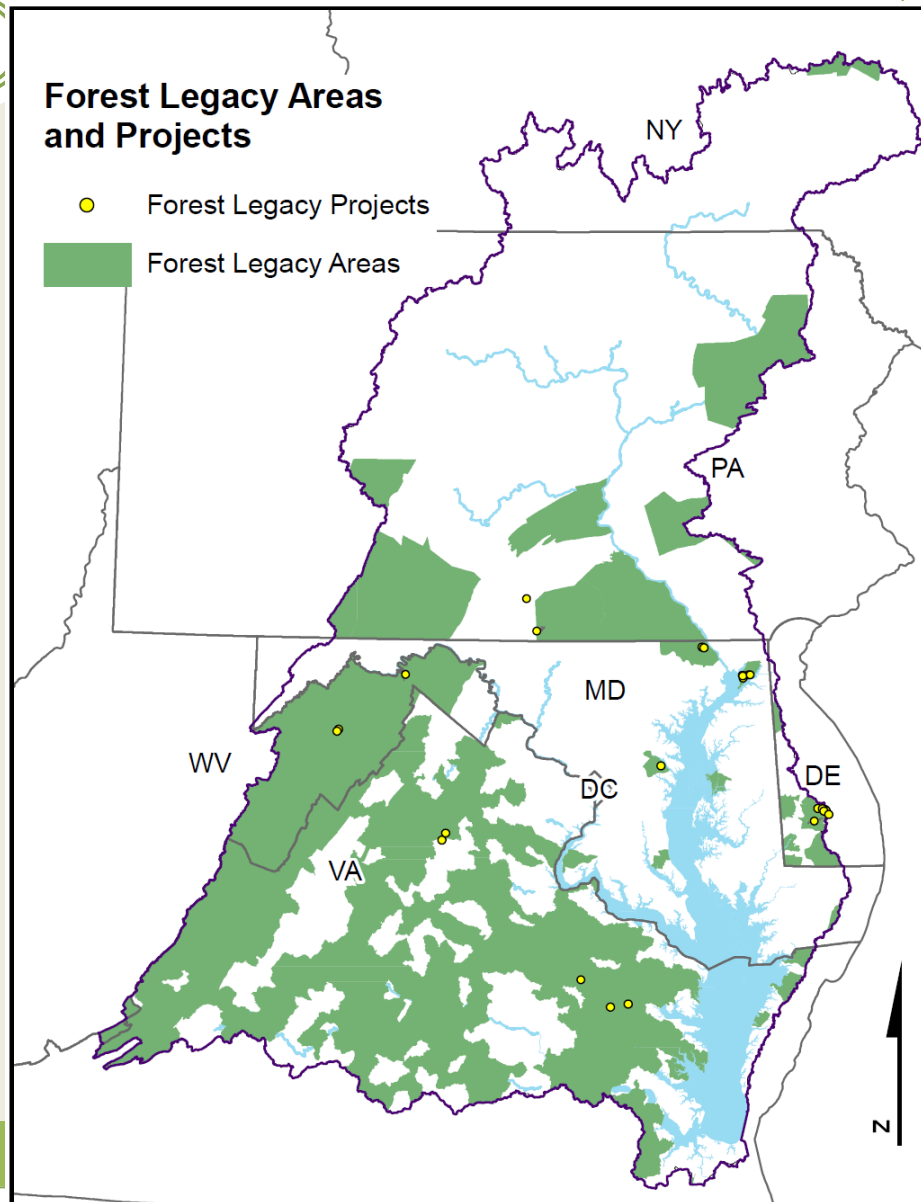
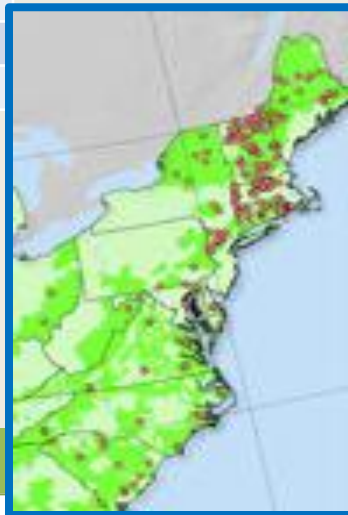
DIRECTIVE NO. 06-1

Protecting the Forests of the
Chesapeake Watershed



Forest Legacy Program

State	Project	Acres
DE	Green Horizons	1579
MD	Broad Creek	784
	Elk Neck	673
	Green Cathedral	299
	Muddy Creek	196
PA	Tree Farm #1	1454
	Eagle Rock * (in process)	1063
VA	Dragon Run	1371
	Gwathmey	547
	Romine	250
WV	Sandy Point-Mattaponi	2043
	Potomac River Hills	2424
	South Branch	965
Total		13649



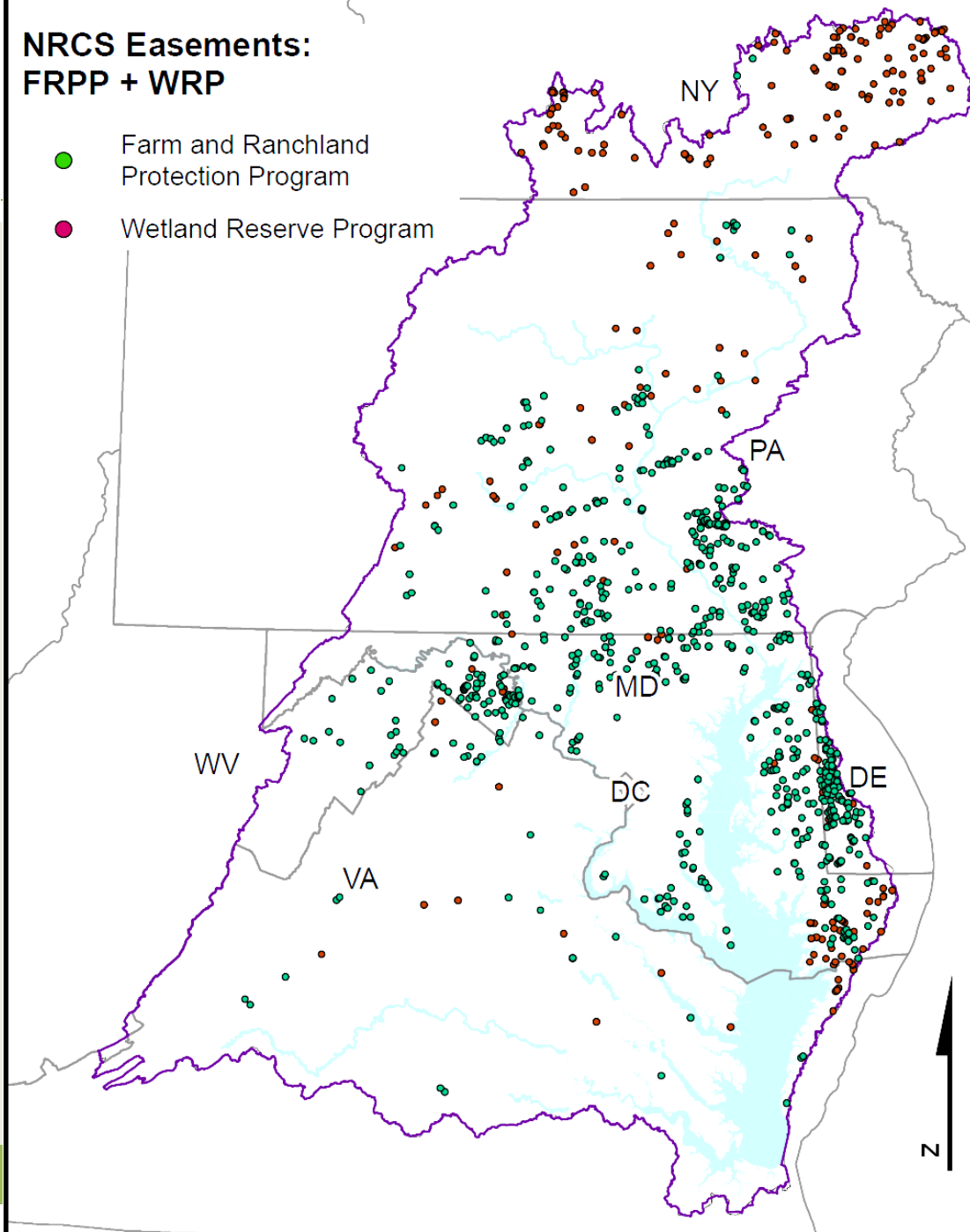
NRCS

	FRPP	WRP perm
DE	4348	652
MD	1286	6584
NY	0	4184
PA	5956	1373
VA	1570	673
WV	3407	151
Total	16566	13617

** FRPP focused on prime soils but can be up to 2/3 forest cover

NRCS Easements: FRPP + WRP

- Farm and Ranchland Protection Program
- Wetland Reserve Program



Dept. of Defense - REPI

Encroachment Prevention Partnership: Readiness and Environmental Protection Initiative

The REPI program “provides funding for the military to work with state and local governments, non-governmental organizations (NGOs), and willing land owners to help prevent encroachment of missions on military installation.

The funding leverages public/private partnerships and additional financial commitments to promote innovative land conservation solutions that benefit both military readiness and the environment” (www.repi.mil/Documents/REPIProgramInformation.pdf).

The map below illustrates two of the US Navy’s areas for Encroachment Partnering and REPI spending tied to three naval installations. The blue polygon delineates the boundary in Maryland boundary and the red polygon delineates the boundary in Virginia.



NPS: Large Landscape Conservation Partnership



- Great forum for collaborating on priorities at the CB watershed scale
- Landscape tool



**Landscape Conservation in
the Chesapeake Watershed**
**Building the
Foundation for Success**

**A Report Summarizing the
Large Landscape Conservation Workshop
August 16-17, 2012**

**National Conservation Training Center
Shepherdstown, West Virginia**

State/Local Examples (just a sample...)



- VA DOF Working Forest Easements
- MD Agprint/Greenprint –targeted funding
- PA Ag Preservation Program
- NY Upper Susquehanna Conservation Alliance
- WV Lost River/Cacapon Land Trust
- DE Forest Legacy Projects
- TNC Working Woodlands Program (PA)
- TU Brook Trout Conservation Initiative
- And more...

Next Steps



- Share summary of findings from state-level meetings (Nov-Dec)
 - Chime in on additional forest conservation recommendations!
- Aim to complete Draft Strategy by Jan 2013 for broader review and comment