

Forest Land Conservation



CHESAPEAKE EXECUTIVE COUNCIL

Protecting the Forests of the Chesapeake Bay Watershed

2007 Response to Directive 06-1

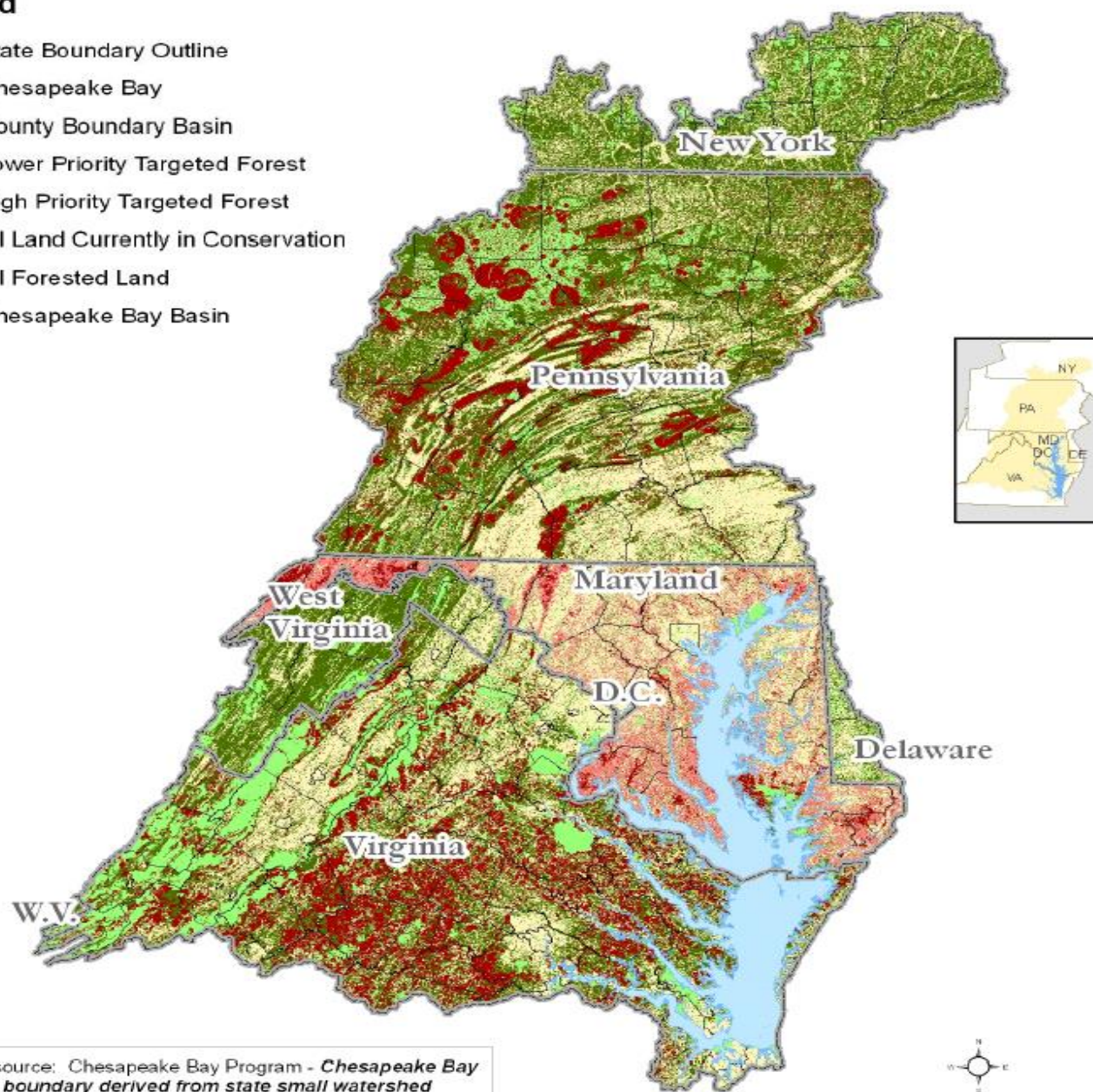
In 2006, the Chesapeake Executive Council recognized that retaining, expanding, and sustainably managing forest lands is essential to restoring a healthy Chesapeake Bay by signing Directive 06-01. This implementation document responds to Directive 06-1 by identifying specific actions we will take to...

State Proposed Available High Priority Forested Conservation Lands

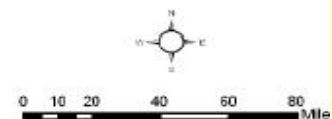
Chesapeake Bay Program
12/20/2010 10:00 AM

Legend

- State Boundary Outline
- Chesapeake Bay
- County Boundary Basin
- Lower Priority Targeted Forest
- High Priority Targeted Forest
- All Land Currently in Conservation
- All Forested Land
- Chesapeake Bay Basin



Data source: Chesapeake Bay Program - *Chesapeake Bay basin boundary derived from state small watershed boundaries. Forest Cover from RESAC 2000 Land Cover. PA, MD, and VA Forest Conservation Target Layers from PADCNr, MDDNR, and VA Dept. of Forestry*







Protecting the Forests of the Chesapeake Bay Watershed

By 2020, permanently protect 695,000 acres, targeting forests in areas of highest water quality value. Of this, 266,400 acres of forest land under threat of conversion will be protected by 2012.

State*	Total Forest in Watershed (acres)	Forest Already Protected (acres)	2012 Protecting Goal (acres)	2020 Protecting Goal (acres)
Delaware	175,900	48,400 (28%)	5,000	15,000
Maryland	2,358,000	724,000 (31%)	96,000	250,000
New York	2,433,000	295,000 (12%)	5,800	15,000
Pennsylvania	8,716,000	2,896,000 (33%)	38,500	100,000
Virginia	8,367,000	2,093,000 (25%)	135,000	315,000

*The District of Columbia will focus on a goal to increase urban tree canopy coverage, in lieu of forest protection. The urban tree canopy goal is in addition to implementing goals to facilitate retaining existing trees in priority areas.

2007 Forest Conservation Directive Now

--When this goal was adopted as part of the 2010 Executive Order Strategy and the 2014 New Bay Agreement, the endpoint was extended to 2025 to coincide with the 2 million acre land conservation goal.

--Getting good annual data on forest conservation has been challenging

--Bay Program analysts calculated protected forest data by state for 2011-2013

--In this two year period, over 478,000 acres of total forest were protected

--High-value forest were 19% of the total forest protected

Acres of Protected Forest in Chesapeake Bay 2011-2013

	High Value Forest	Total Forest	2007 Goal for High-Value Forest
Delaware	591	2,891	15,000
Maryland	54,033	109,537	250,000
New York	2,957	12,687	15,000
Pennsylvania	17,081	24,683	100,000
Virginia	18,249	321,033	315,000
West Virginia	737	7,488	*
CBW Total	93,648	478,319	695,000

Proposed Forest Conservation Workplan Actions

- **Develop high-value forest conservation map(s) for watershed**
 - One watershed-wide layer (requested in larger MS and needed for updated landcover/consistency/headwater states)
 - Could be done by a 3rd party in consultation with FWG
 - Consider forest habitat
 - County-level forest patch maps (like MD's GI maps)
- **Establish a Working Land Conservation Action Team**
 - Include land trusts, watershed orgs, etc
 - Go over actions in WLCS
 - Report to Chesapeake Large Landscape Collaborative