

# Delmarva Restoration and Conservation Network

Habitat GIT Meeting  
May 5, 2021







# Agriculture



## Land Use

48% Agriculture

7% Urban







# Commercial Fishing

Oysters



Blue Crabs



# Economics of Delmarva's Natural Lands, Farmland, and Open Space\*

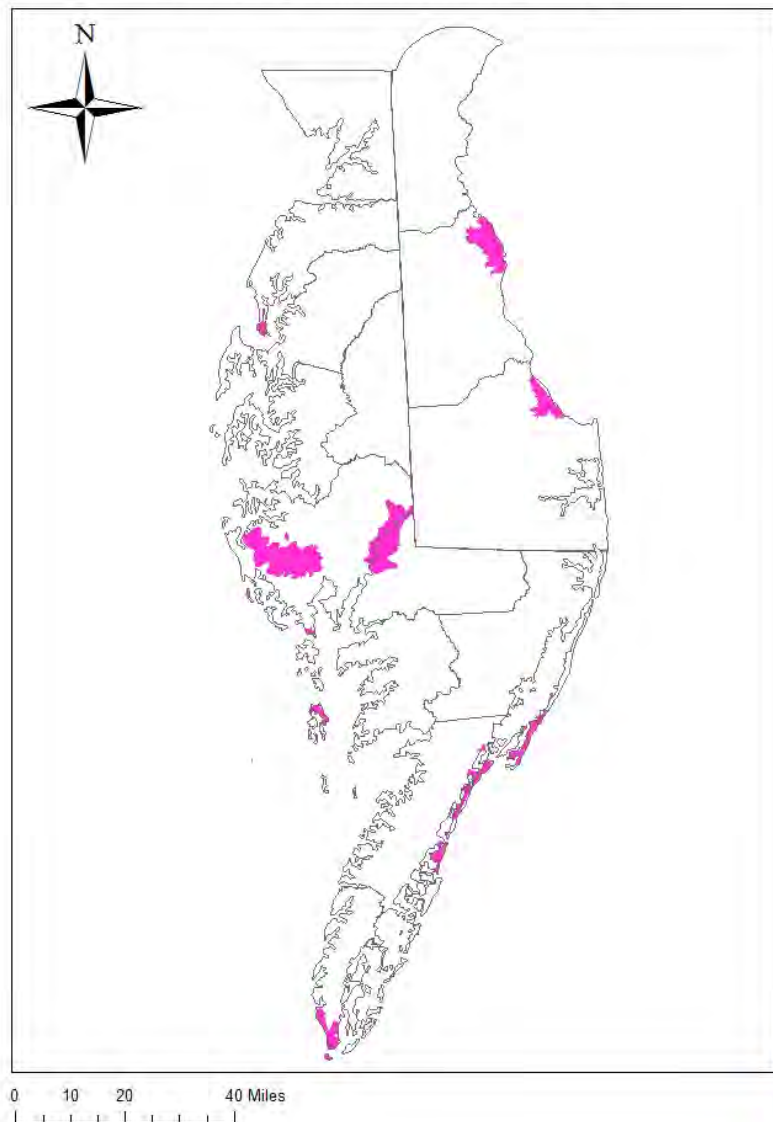
- Outdoor enthusiasts spend up to \$3.9 billion per year supporting 27,900 jobs;
- 7,000 farms yield \$2.8 billion in farm products per year on 1.3 million acres;
- Commercial fishing in the Chesapeake Bay is worth \$300 million per year;
- Delmarva Peninsula fishery leads the nation in total weight of catch;
- All told, contributes over \$15 billion in ecological Services annually, supporting important Industries like fisheries and tourism;
- Conservation, aquaculture, and conservation visitor spending contributed \$270 million dollars to Virginia's Delmarva in 2016.

\*A 2012 study on the economics of natural areas (including farmland) on Delmarva by Southwick Associates & a socio-economic study by the Virginia Coastal Zone Management Program.

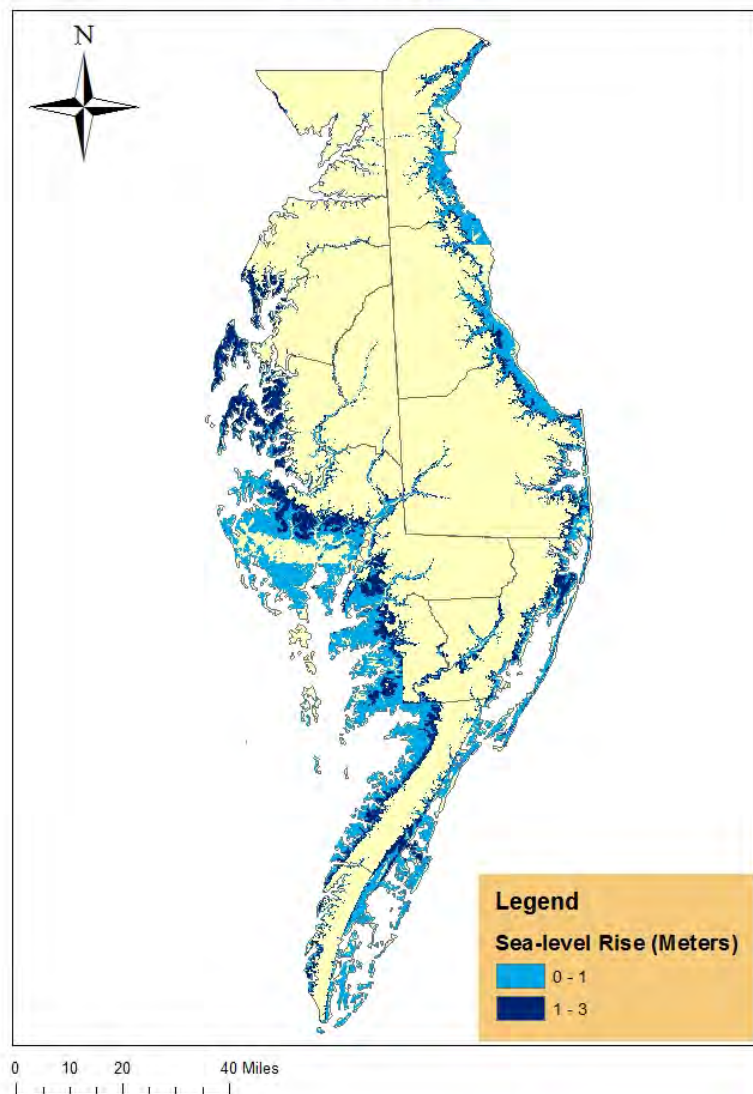




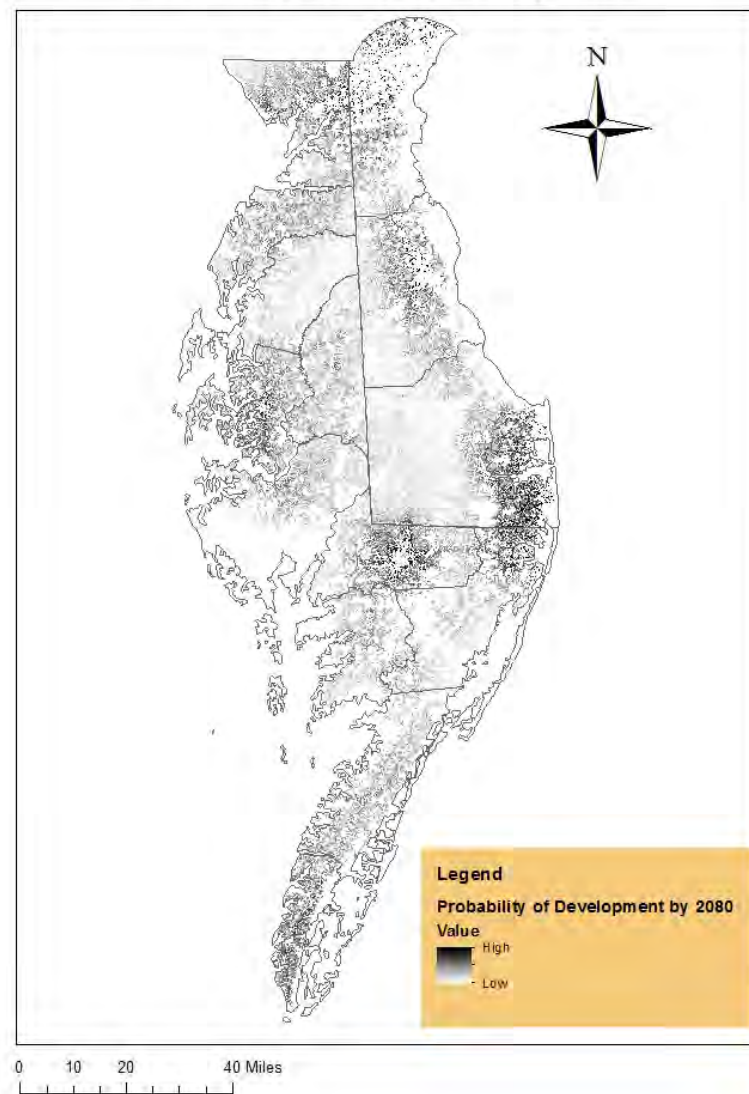
## Delmarva Restoration and Conservation Network Delmarva National Wildlife Refuges



## Delmarva Restoration and Conservation Network Sea-level Rise



## Delmarva Restoration and Conservation Network Probability of Development by 2080





# Delmarva Restoration and Conservation Network



## Strategic Action Plan

- Conservation Design + Business Plan
- Protect the Delmarva countryside.
- What needs to be done and where?
- How we will work together to get support and funding for voluntary restoration and conservation on Delmarva.
- 102 People from 42 Organizations







# **The Delmarva Restoration and Conservation Network**

## **Vision, Mission, and Goals**

### **Mission**

To restore and conserve Delmarva's landscapes, waterways, and shorelines that are special to its people, fundamental to its economy, and vital for its native fish, wildlife, and plants.

### **Vision**

We envision a Delmarva where native fish and wildlife thrive; the fabric of healthy natural and working lands and waters enrich the lives of those who live, work, and play on the land; and rich forestlands and coastal areas support and sustain present and future generations.



## **Delmarva Restoration and Conservation Network Goals**

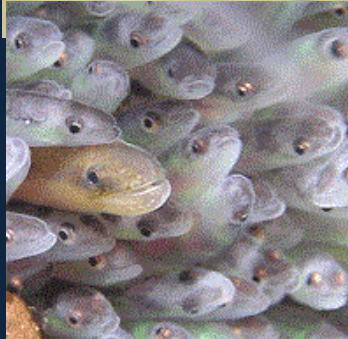
**Goal 1** – Shape and support a network of cooperative alliances among the diversity of people, governments, organizations, and industries that rely on Delmarva's natural resources.

**Goal 2** –Enhance the Sustainability of resource-based industries -- including fisheries, agriculture, forest products, tourism, and outdoor recreation -- that enable the economies of Delmarva communities to thrive.

**Goal 3** - Identify, conserve, restore, and manage the vital network of working and natural lands and waters that support a diversity of habitats for native fish and wildlife, and maintain resiliency in the face of future development and climate change for present and future generations.

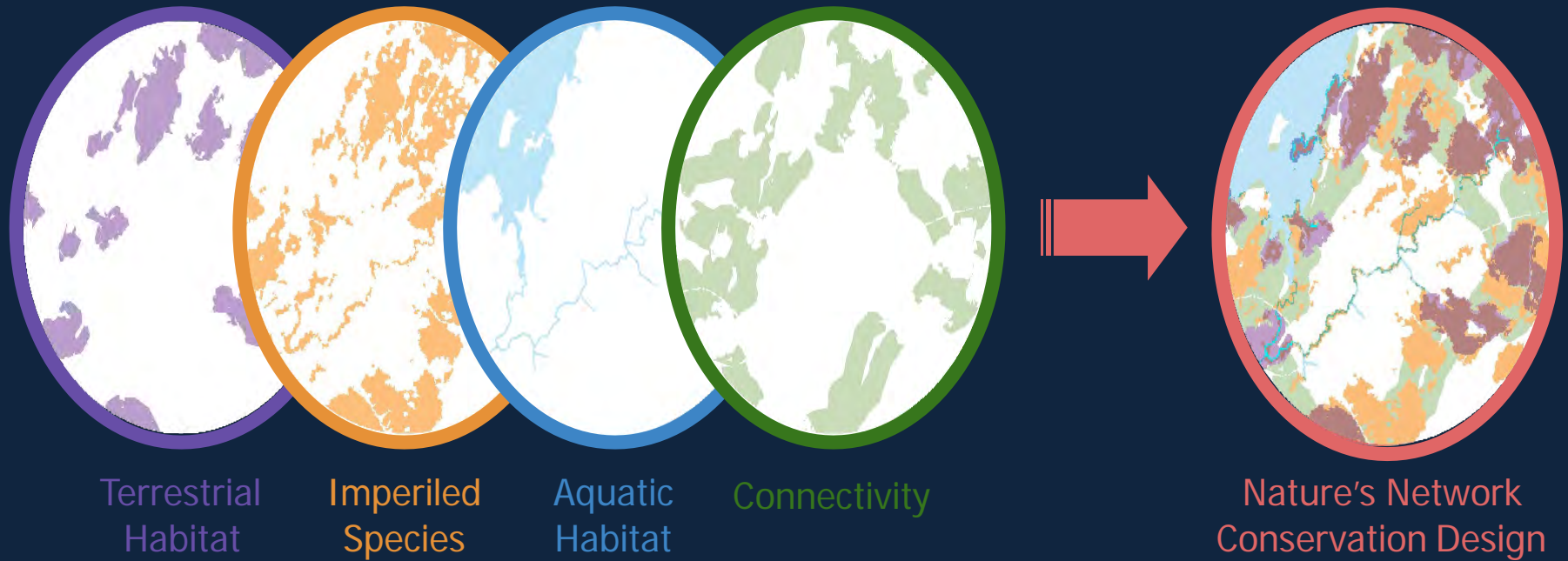


# Delmarva Restoration and Conservation Network Representative Species (47)



# The conservation design

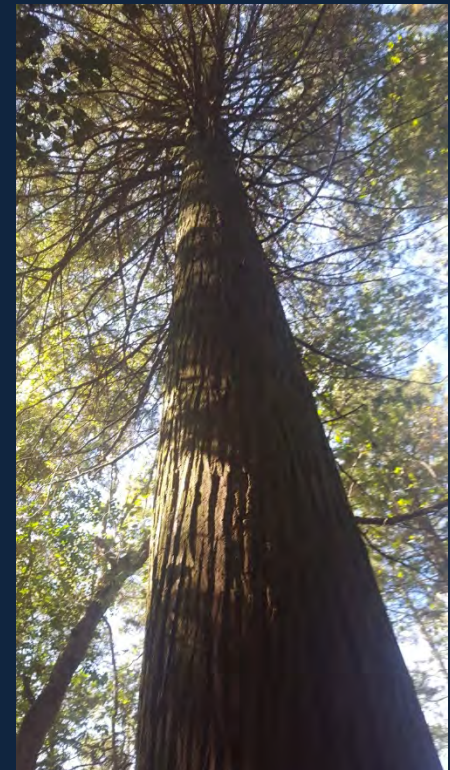
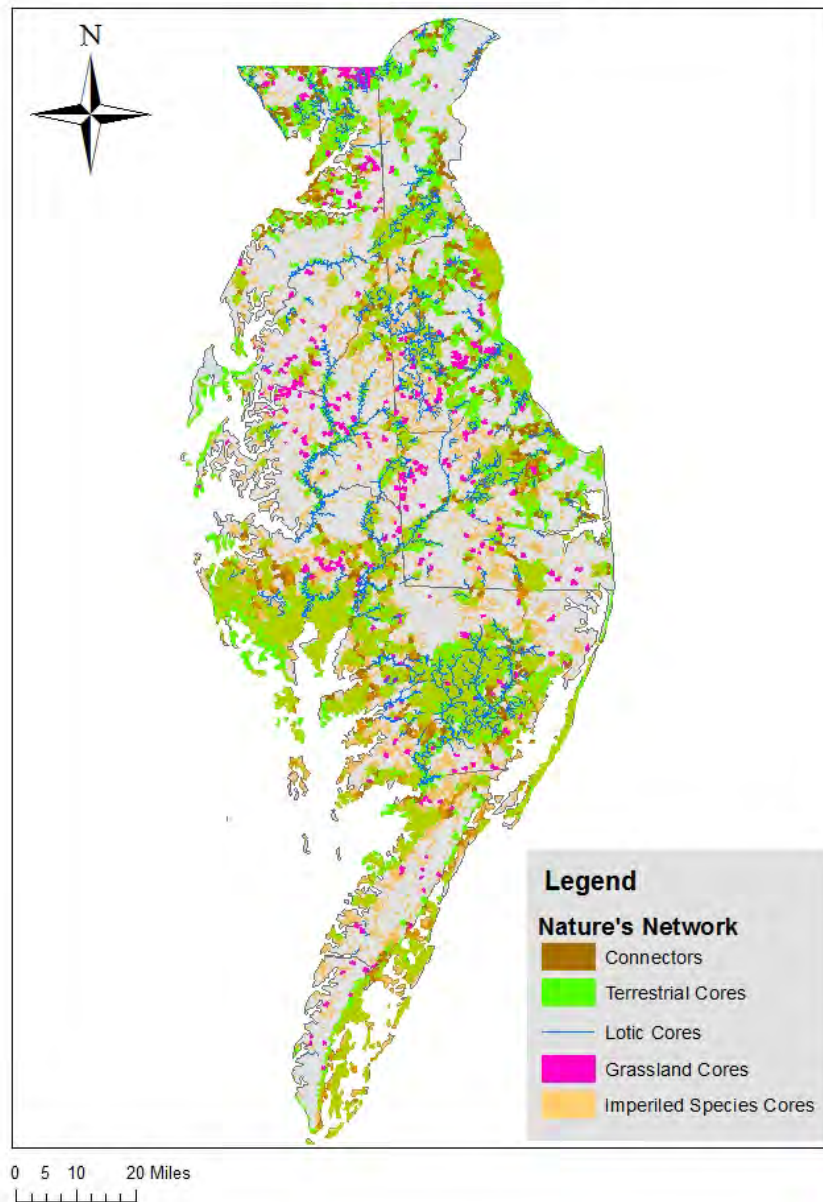
[www.naturesnetwork.org](http://www.naturesnetwork.org)



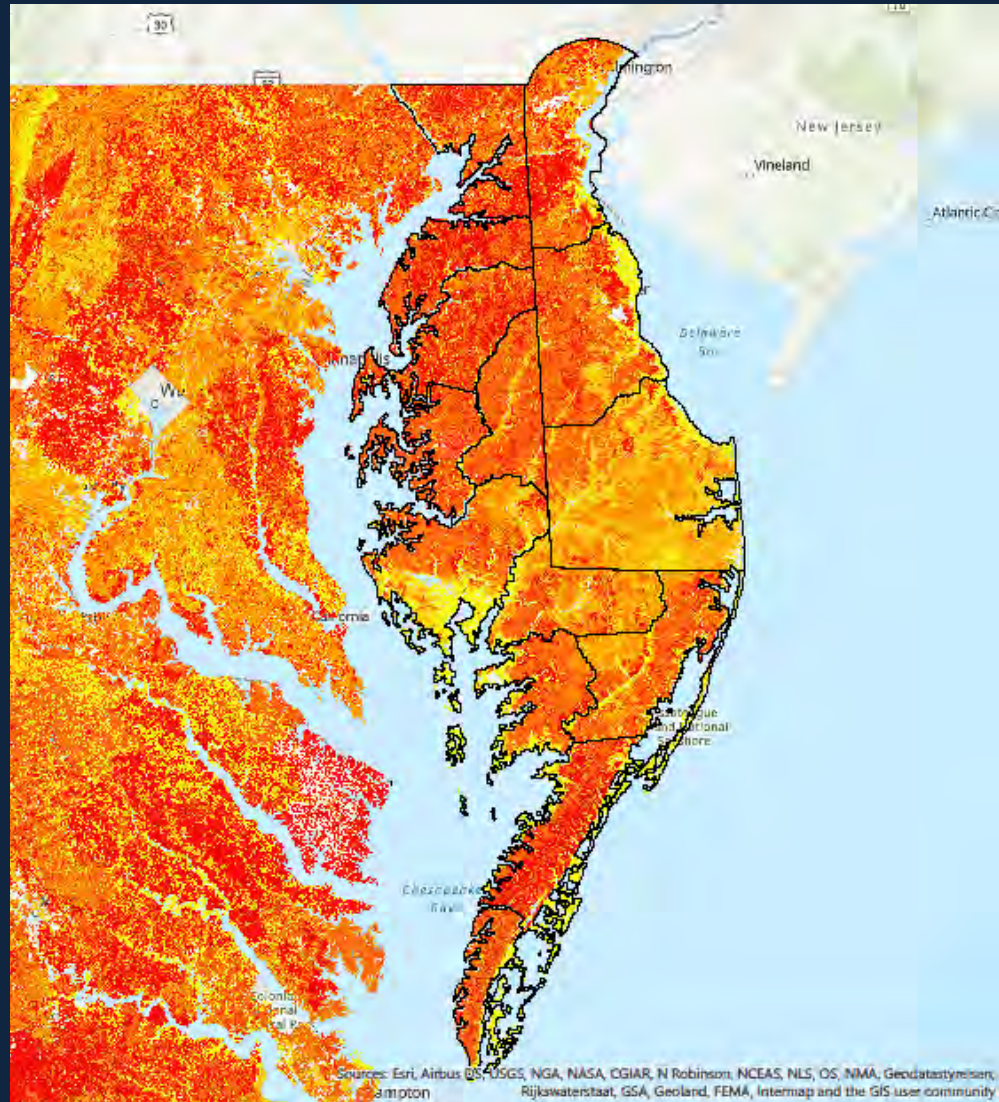
The key features of each of the four components are integrated in one map for Nature's Network Conservation Design, but many complementary data layers are available to support conservation planning.



## Delmarva Restoration and Conservation Network Nature's Network Core Map

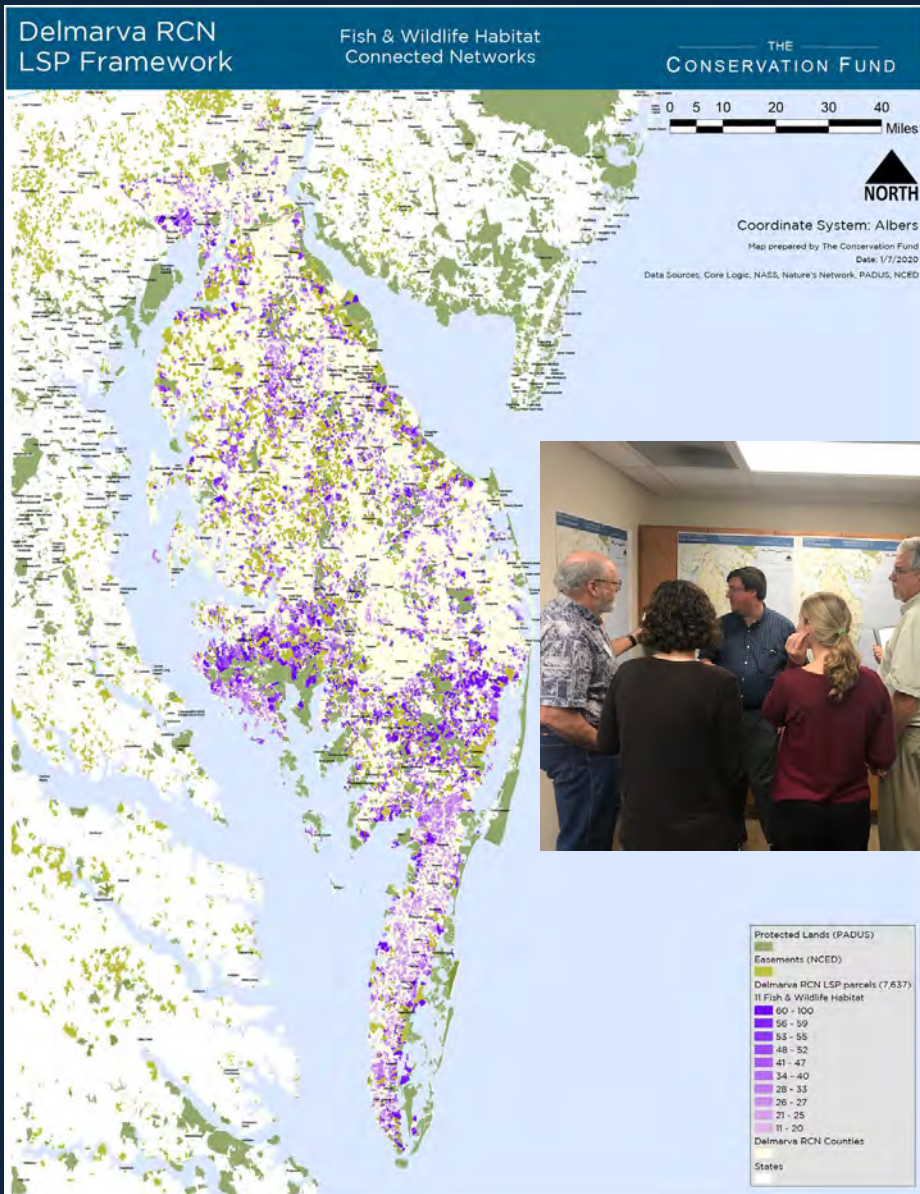


# Soil Productivity





# Structured Decision Making Workshop – Logic Scoring of Preference Model



## DELMARVA RCD WORKSHOP – FEEDBACK FORMS – OCTOBER 9, 2019 PLEASE RETURN BEFORE YOU DEPART THE WORKSHOP

### Station 1 - Fish & Wildlife Habitat

Review Maps and provide feedback below:

- 1a) Connected Network Features (111)
- 1b) Connected Networks Parcel Map (111)
- 1c) Representative Species Landscape Capability (112)
- 1d) Representative Species Parcel Map (112)

A. How would you weight the relative factors for parcels to meet fish and wildlife habitat protection objectives? (Total should equal 100)

Fish and Wildlife Connected Networks \_\_\_\_\_  
Representative Species Landscape Capability \_\_\_\_\_  
Proximity to Existing Protected/Managed Lands \_\_\_\_\_  
100%

How would you weight the relative factors for parcels to meet fish and wildlife habitat protection objectives? (Total should equal 100)

Total Acreage of Connected Network Designations within the Parcel \_\_\_\_\_  
Percent of Parcel with Connected Network Designations (50-100%) \_\_\_\_\_  
Total Parcel Size \_\_\_\_\_  
100%

What percent suitability would you give for the number of representative species likely to occur on a parcel (values must be between 0-100)?

# Species	% Satisfaction
5	100
4	_____
3	_____
2	_____
1	_____
0	0

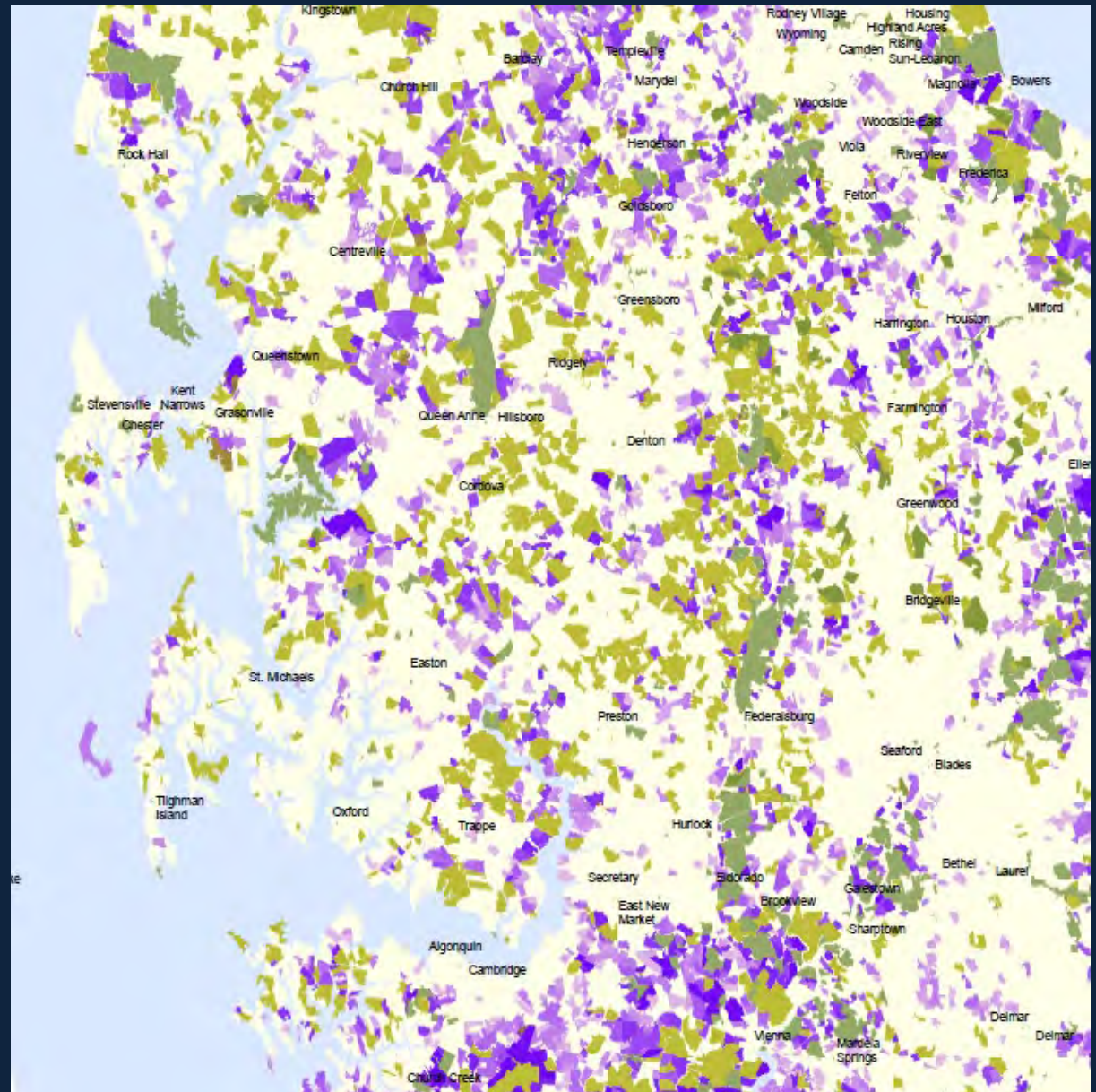
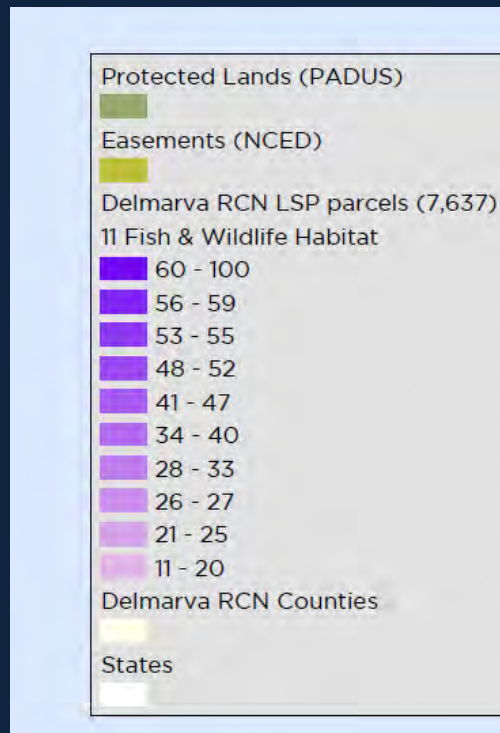
D. Are there any other considerations for fish and wildlife habitat you would like to see given the available data on the maps?

(Optional) Name: \_\_\_\_\_ Affiliation: \_\_\_\_\_  
e-Mail: \_\_\_\_\_ Phone: \_\_\_\_\_

### Station 2 - Water Quality

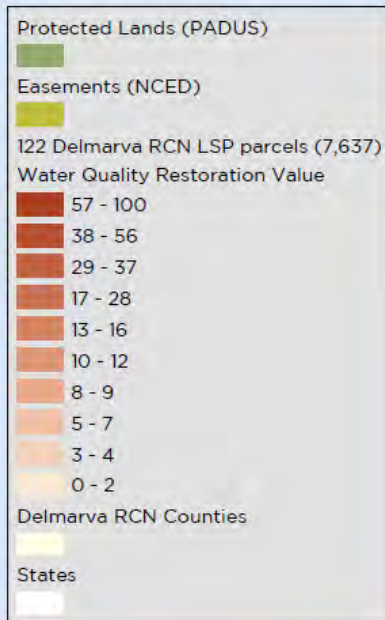


# LSP Wildlife Conservation Value

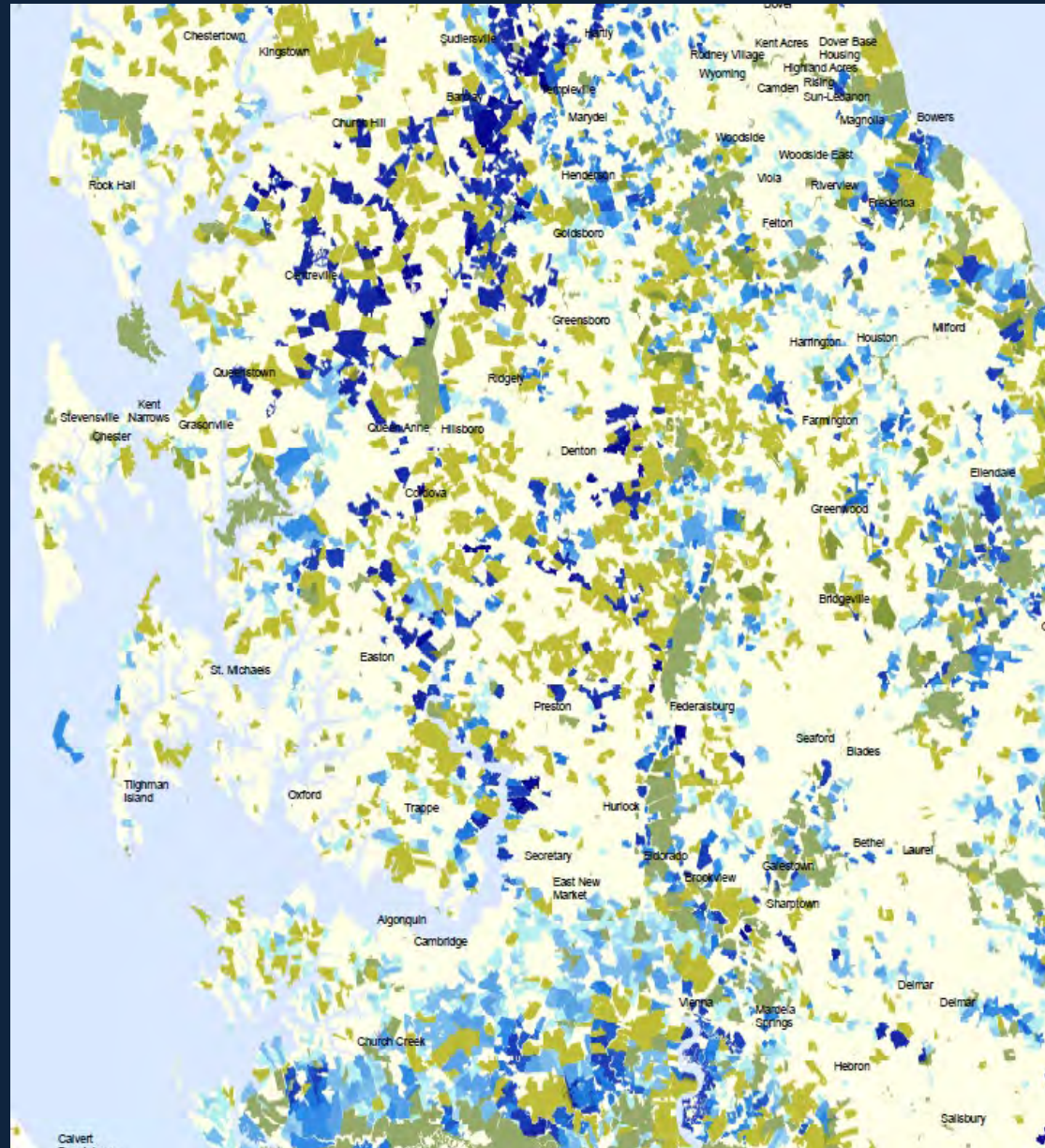
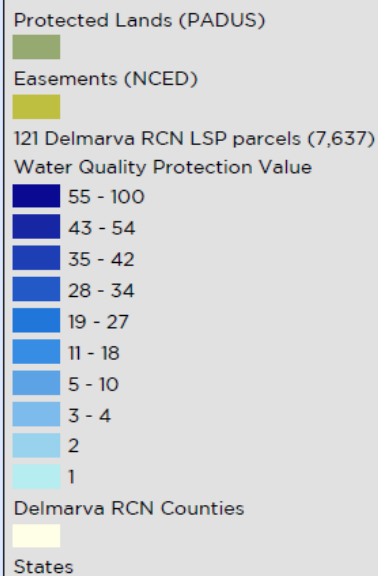




# LSP Water Quality Restoration Value



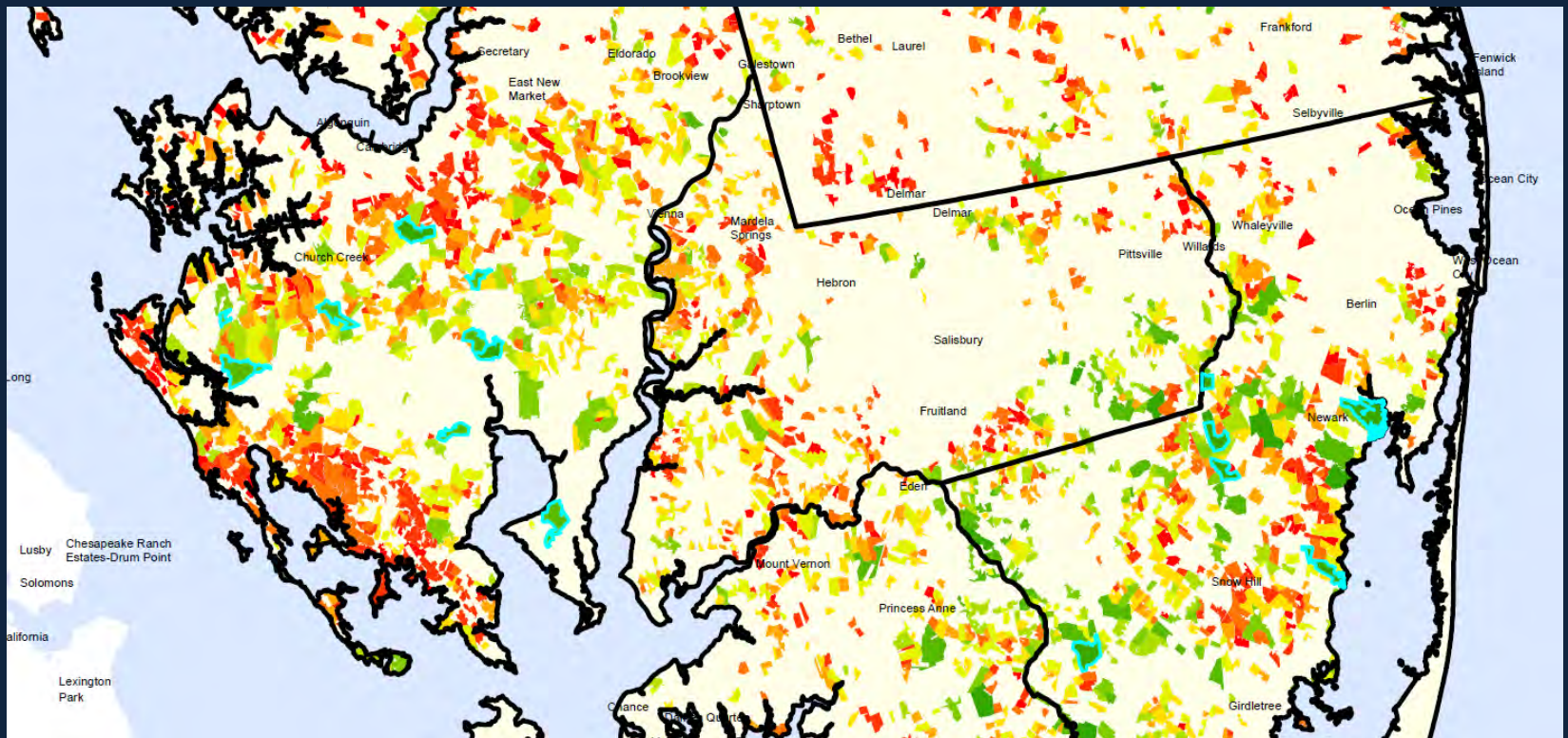
# LSP Water Quality Protection Value



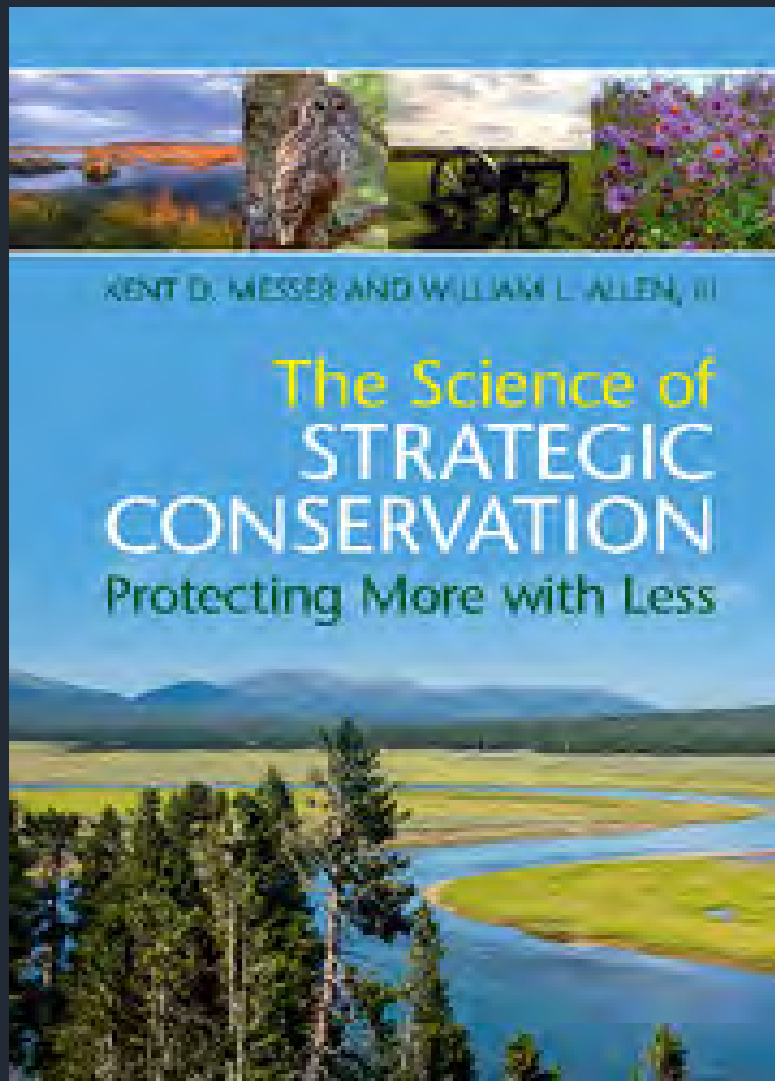


# Optimization

Method	# Projects	Acres	Mean LSP Score (0-100)	Aggregate LSP Value
Cost-Effective Analysis	24	12,502	86.0	2,065
Rank-Based Method	21	9,987	72.1	1,515



*For more information...*

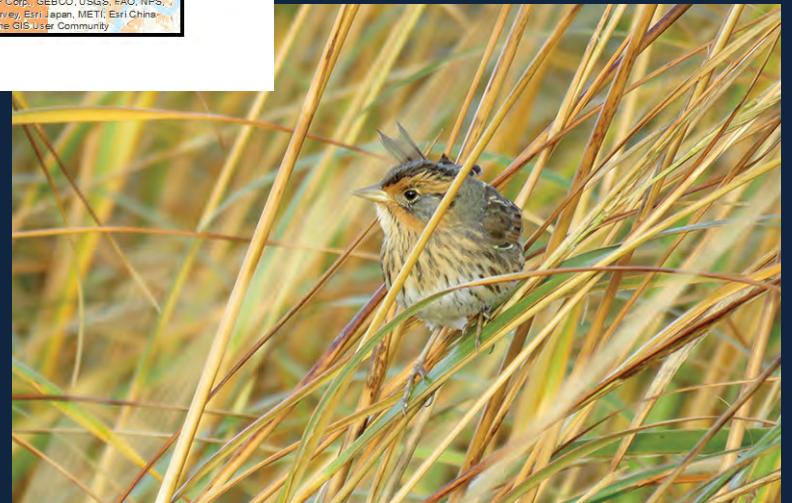
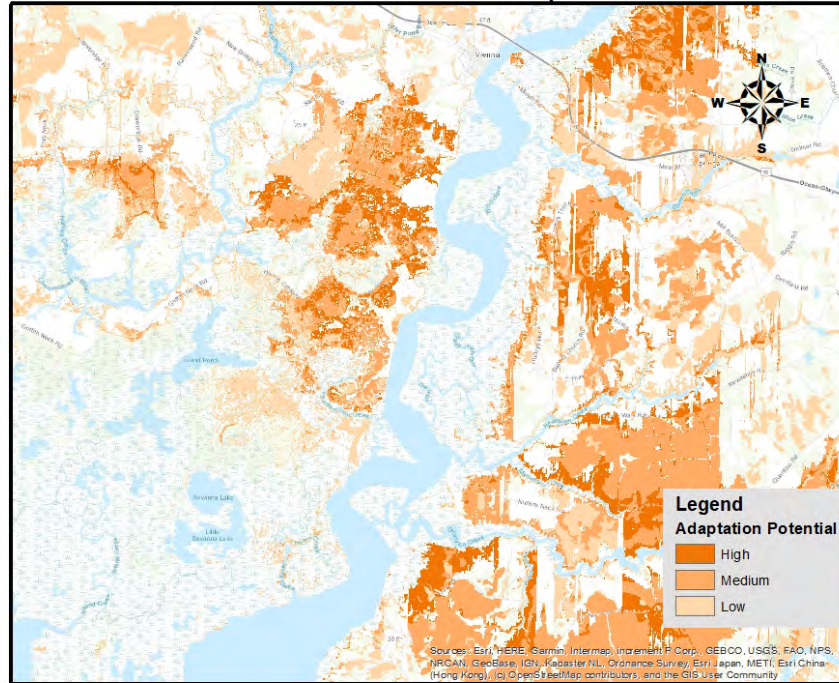


- Publisher: Cambridge University Press
- [Kent D. Messer](#), University of Delaware , [William L. Allen, III](#), The Conservation Fund, Chapel Hill, USA
- Print publication year: 2019
- Online ISBN: 9781108123778



# Delmarva Restoration and Conservation Network Pilot Project

Sea-Level Rise Wetland Adaptation Zones



# Delmarva Restoration and Conservation Network

## Chesapeake Watershed Investments for Landscape Defense (WILD) Act





# Delmarva Restoration & Conservation Network

Dan Murphy USFWS  
Chesapeake Bay Field Office  
(410) 573-4521

[dan\\_murphy@fws.gov](mailto:dan_murphy@fws.gov)

Josh Hastings  
Lower Shore Land Trust  
410-251-5268  
[jhastings@lowershorelandtrust.org](mailto:jhastings@lowershorelandtrust.org)

