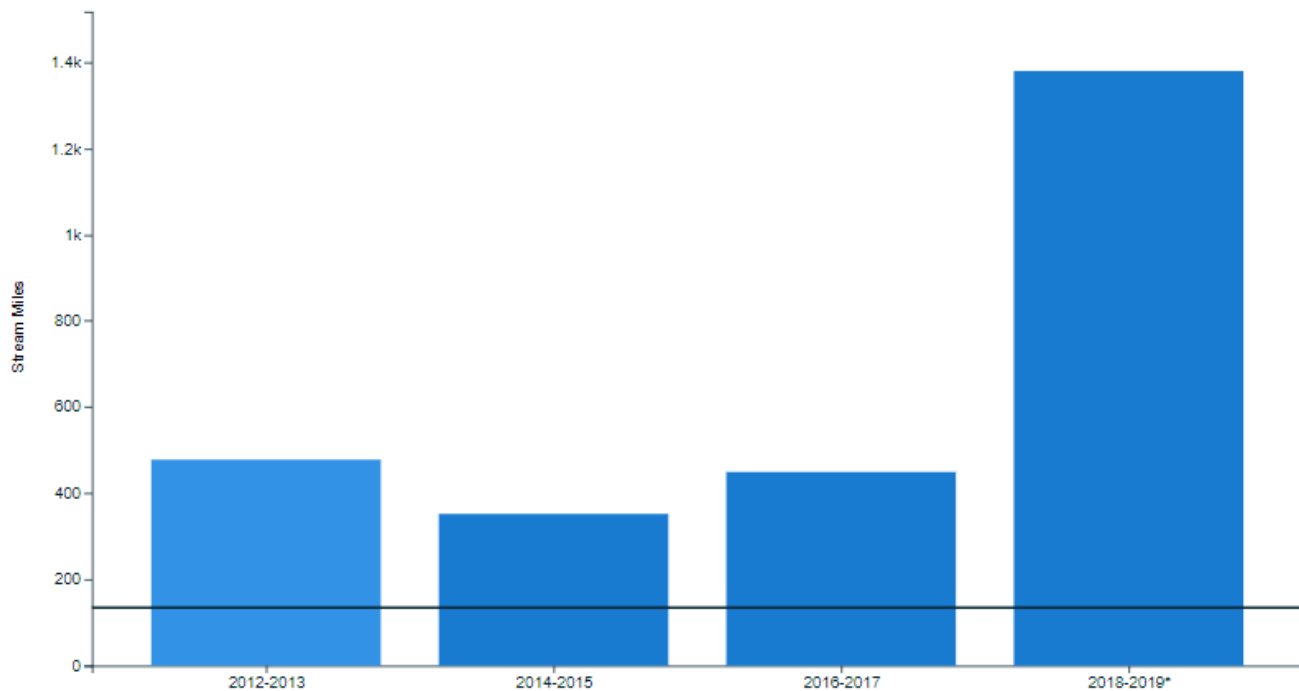


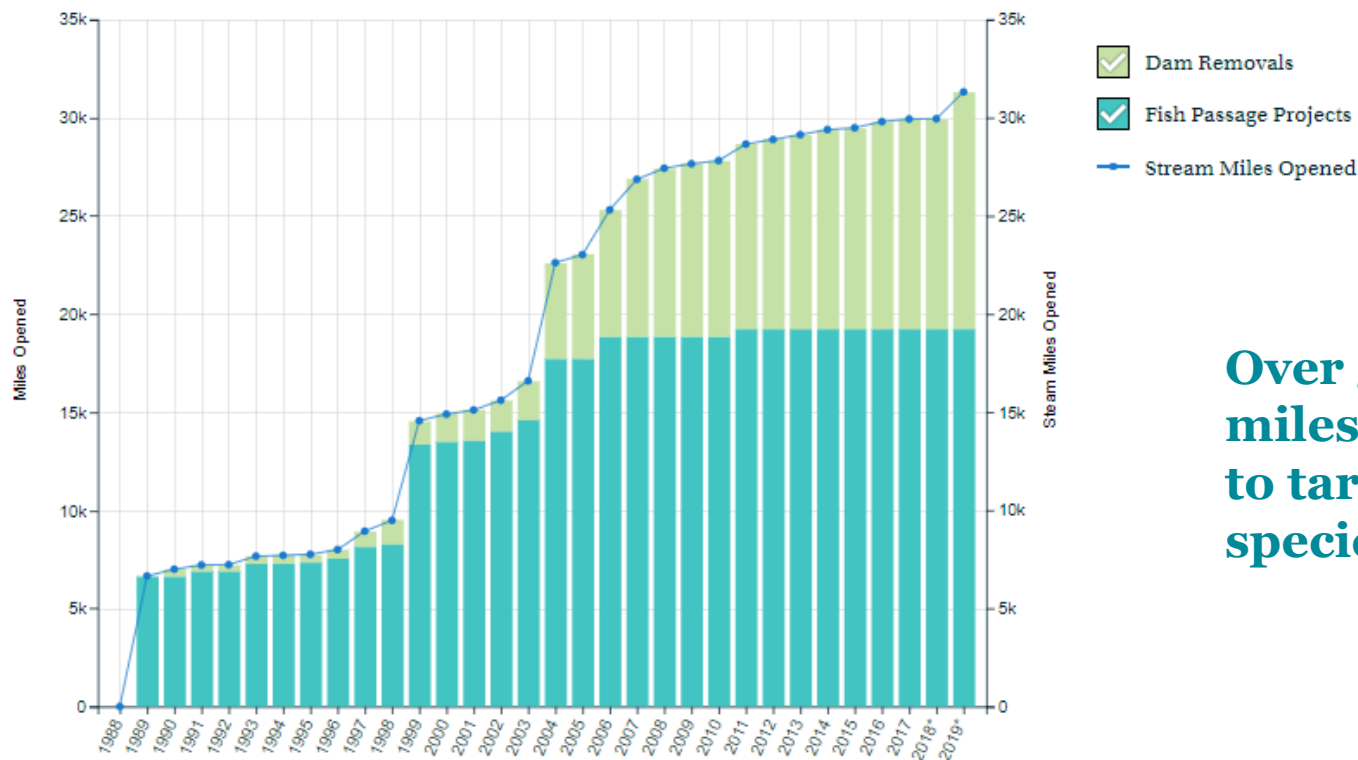
Stream Miles Opened to Fish Passage (Cumulative) (2012-2019)

All of the stream miles opened between 2012-2019 were via dam removal projects. *2018 and 2019 miles were updated August 2021 to reflect a more complete data download.

[VIEW CHART](#)[VIEW TABLE](#)

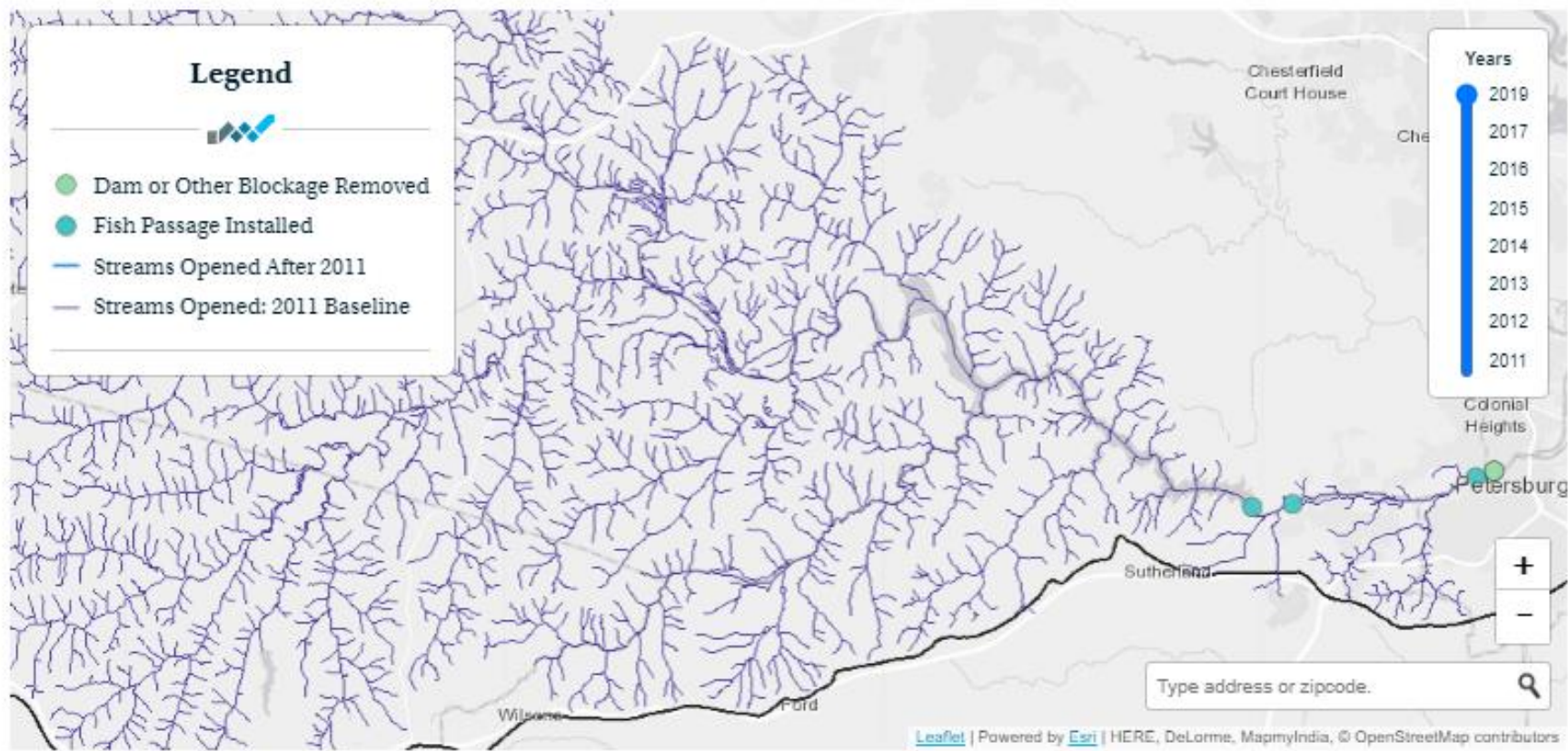
Stream Miles Opened 1988-2019 (Cumulative) [🔗](#)

Stream Miles Opened to Fish Passage via Dam Removals and Fish Passage Projects. *2018 and 2019 miles were updated August 2021 to reflect a more complete data download.

[VIEW CHART](#)[VIEW TABLE](#)

**Over 30,000
miles opened
to target
species!**

Streams Opened to Fish Passage (1989-2019)



- Use potential infrastructure funding to expand the dam removal and culvert initiatives while addressing climate change
- Work more with county and local governments on to road-stream crossings; use new guidance document for Maryland
- Expand the network of partners to accomplish more projects

