

Invasive Catfish Workgroup Potomac River Fisheries Commission Management Updates



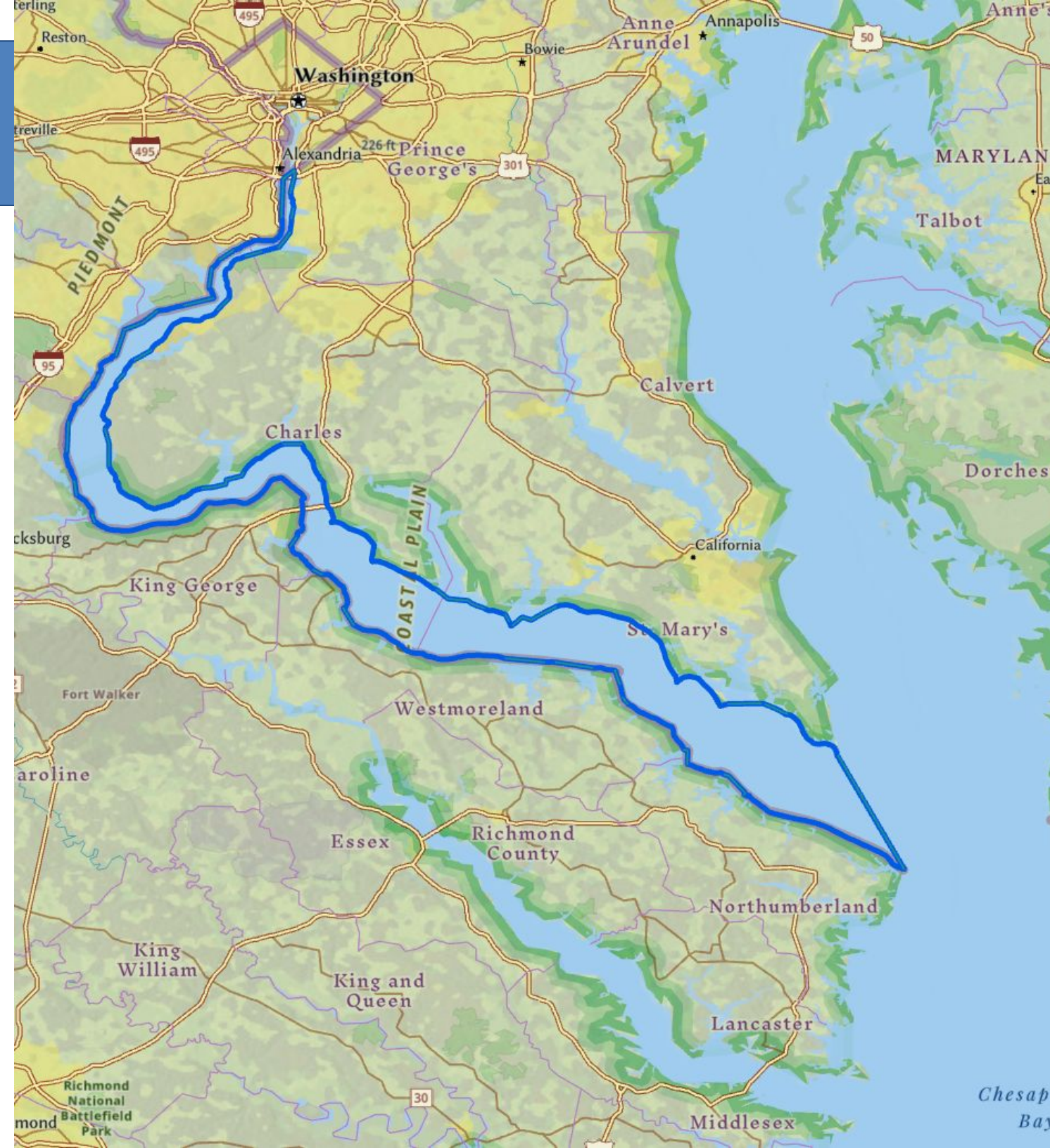
May 27, 2025

Ingrid Braun-Ricks, Assistant Executive Secretary



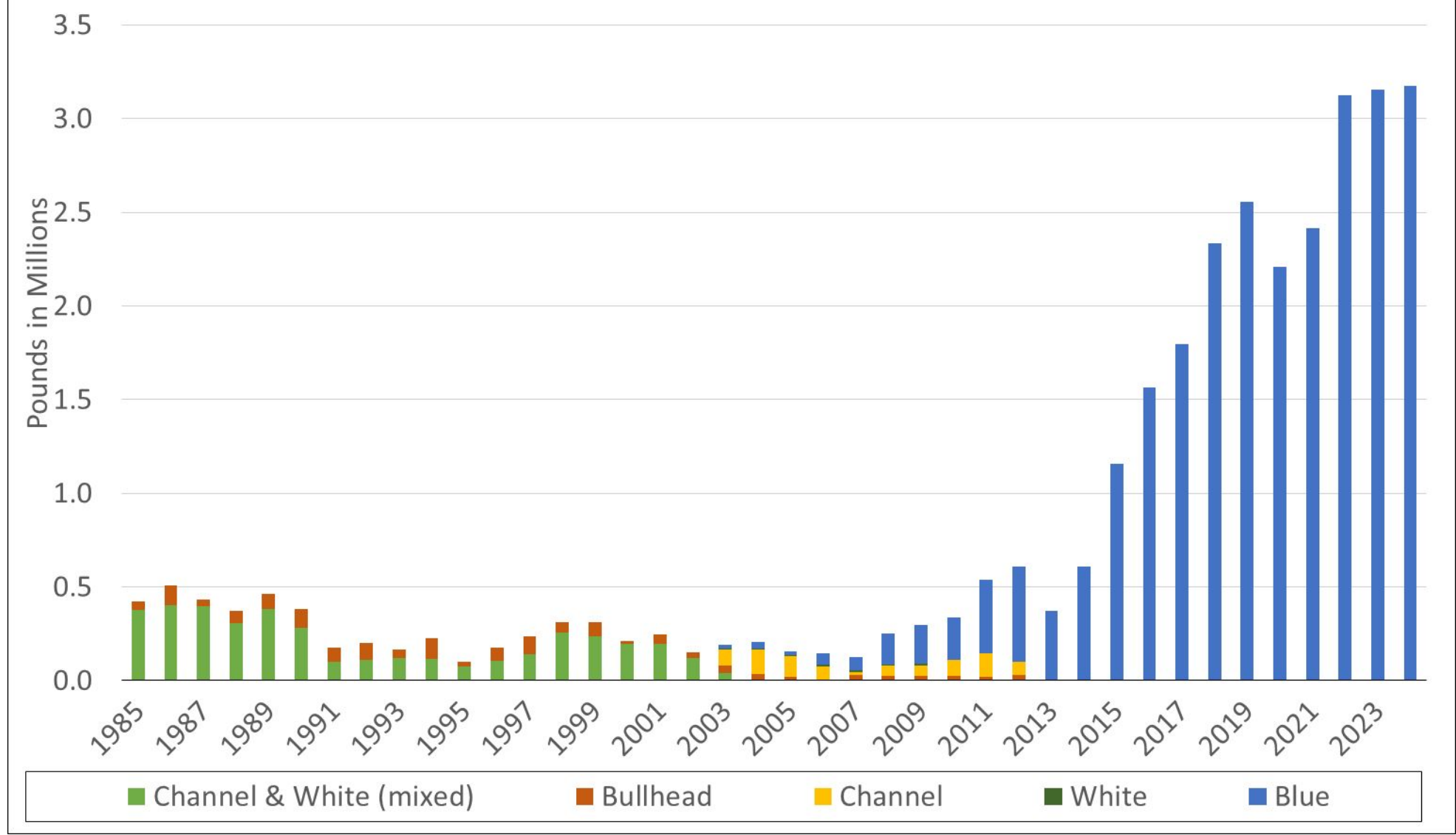
Management Summary

- PRFC Jurisdiction: Woodrow Wilson Bridge down the mouth of the Potomac
- First seen in Potomac River in 1983
- Caught Recreationally and Commercially
- From 1960s to 2002, all catfish were reported as Mixed Species
- 2003 catfish harvesters began reporting by species



PRFC Annual Finfish Harvest Report

PRFC Catfish Landed by Species since 1985



2024 Annual Report

Total Catfish: 3,175,987 lbs.

Blue: 3,174,656 lbs.

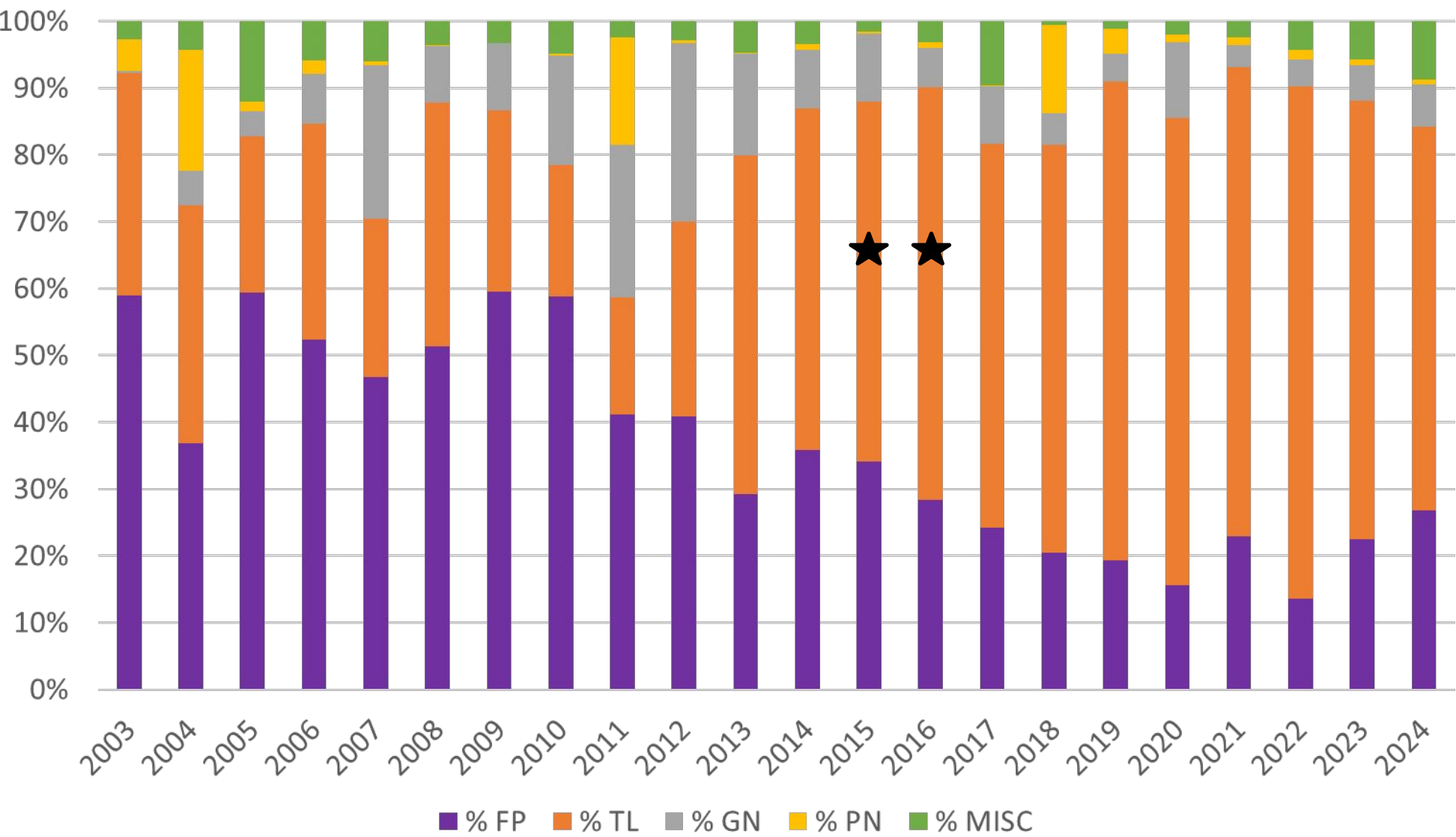
Bullhead: 860 lbs.

Channel: 403 lbs.

White: 68 lbs.

PRFC Annual Finfish Harvest Report

Proportion PRFC Blue Catfish Landed by Gear since 2003



2024 Annual Report

Total Blue Catfish:
3,174,656 lbs.

Fish Pot (FP): 26.9%

Fish Trotline (TL): 57.4%

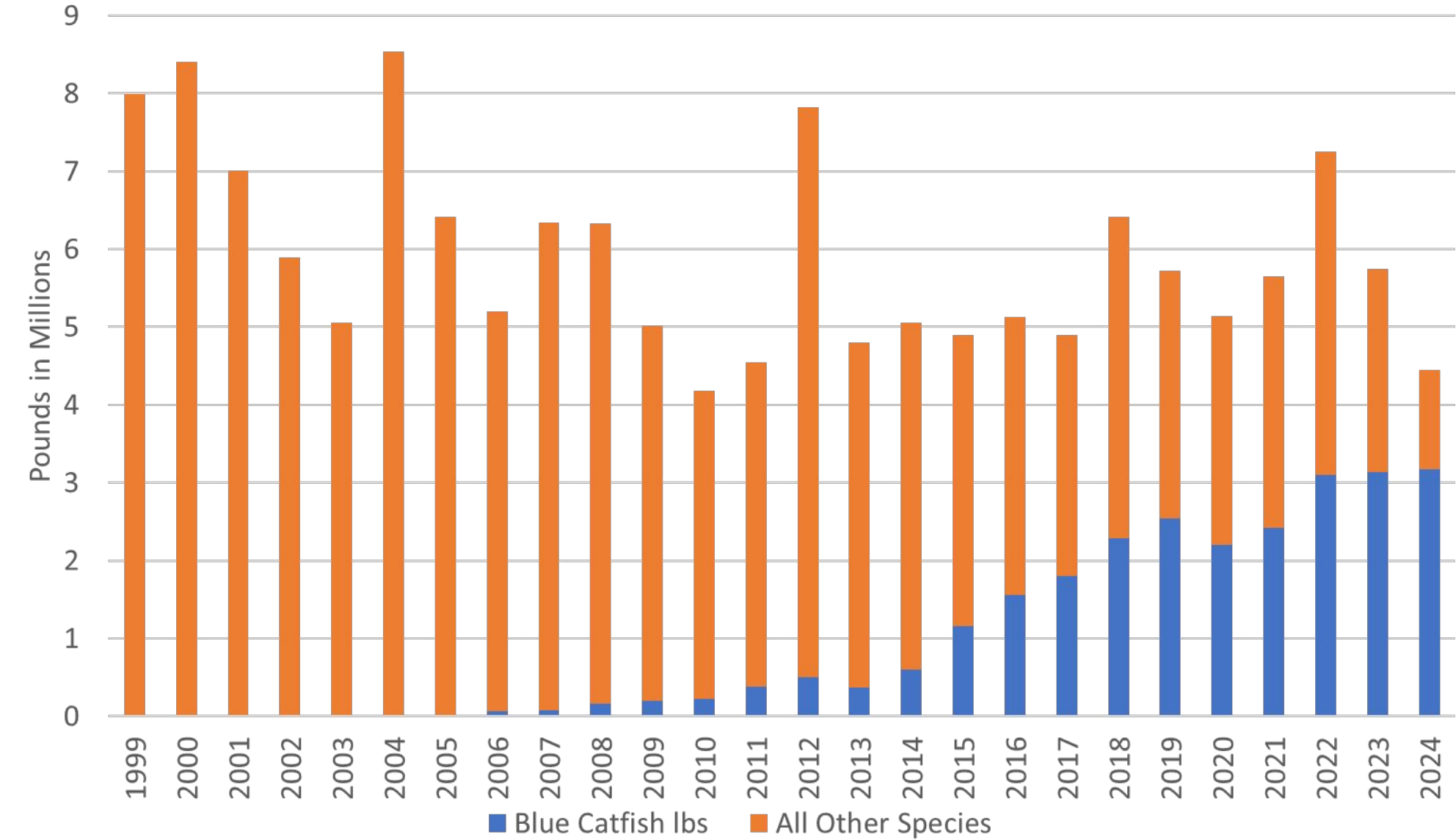
Miscellaneous Gear: 8.7%

Gill Net (GN): 6.3%

Pound Net (PN): 0.7%

PRFC Annual Finfish Harvest Report

PRFC Landings by Species since 2003



2024 Annual Report

Total Landings: 4,449,504 lbs.

Blue Catfish: 3,174,656 lbs.
71% of Total

Questions?



Ingrid Braun-Ricks
Asst. Executive Secretary, PRFC
Ingrid.braun-ricks@prfc.us