



Tree Canopy Indicator; Logic & Action Plan Status

Forestry Workgroup 1/11/23

*Julie Mawhorter, US Forest Service, Tree Canopy
Outcome Coordinator/Forestry Workgroup
julie.mawhorter@usda.gov*

Through the Chesapeake Bay Watershed Agreement, the Chesapeake Bay Program has committed to...



Vital Habitats Goal

Tree Canopy Outcome: Continually increase urban tree canopy capacity to provide air quality, water quality and habitat benefits throughout the watershed. **Expand urban tree canopy by 2,400 acres by 2025.**

Tree Canopy Indicator has 2 components:

- 1) States report three urban tree planting BMPs annually for TMDL
- 2) Long term progress analyzed through CBP Land Cover updates (2021)

Tree Canopy Indicator Measuring Progress

2) Land Use Data

#1 Original 2018 proposal, track changes in

- Tree Canopy over Turf
- Tree Canopy over Impervious
- “Urban” Forest – only Forest that falls within Census Urban Areas & Clusters

And not include:

- Trees on agricultural land
- Forest outside of Census Urban Areas & Clusters

Tree Canopy in 2010 Census
Urban Areas/Clusters

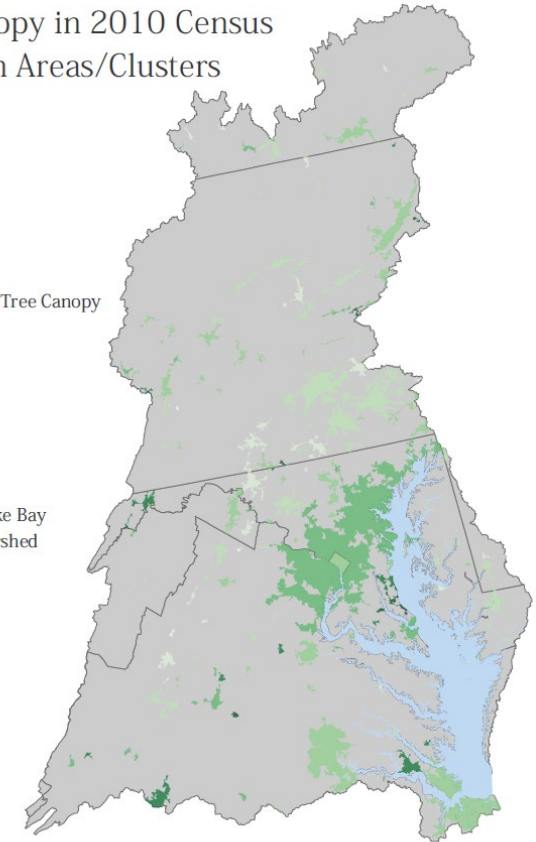
% Community Tree Canopy

- < 10
- < 20
- < 30
- < 40
- < 50
- < 60
- < 70
- < 80

Chesapeake Bay
Bay Watershed



0 15 30 60 90 120 Miles



Tree Canopy Indicator Measuring Progress 2) Land Use Data

#2 Proposal – May 2022

- Use Land Use Change Matrices to track all gains and losses of tree cover (forest+ tree canopy classes) on developed and developing lands

Water Quality GIT Concerns & Discussion

- Tracking all loss of forest to development extends beyond the scope of the outcome; focus on urban/community areas
 - *Loss of forest to development is important to communicate but better captured in the Land Use Methods & Metrics Outcome*
- Need an urban/community “footprint” for 2014 baseline to track change over time
 - *With #2 Proposal, there is no baseline, the footprint is always expanding and losses from development typically outweigh changes within existing urban/community areas*
 - *Align urban/community footprint with local units of government where applicable*

Tree Canopy Indicator Measuring Progress 2) Land Use Data

#3 Final Proposal –

1) Track tree cover gains and losses based on baseline (2010) census-defined areas that don't change over time

- Option 1- census places (2010)
- Option 2- census places + census urban areas & clusters (2010)

Note – this proposal is very similar to our original 2018 methodology which was approved by WQGIT, so may not need additional WQGIT “approval” just an update on decision

2) Future project – work with the Land Use Methods & Metrics Outcome to develop a Forest or Tree Cover loss to development metric (not limited to urban) that could be reported as a supplemental/background indicator related to Tree Canopy

Tree Canopy Indicator Measuring Progress 2) Land Use Data

Option 1 – Census Places-~~2020~~2010

- Includes local units of government + un-incorporated communities
- Used as community metric in fed/state Urban & Community Forestry program
- Narrowest footprint we would want to use (doesn't necessarily include all subdivisions/developed areas in more rural areas)

#3 Final Proposal – Options 1 + 2

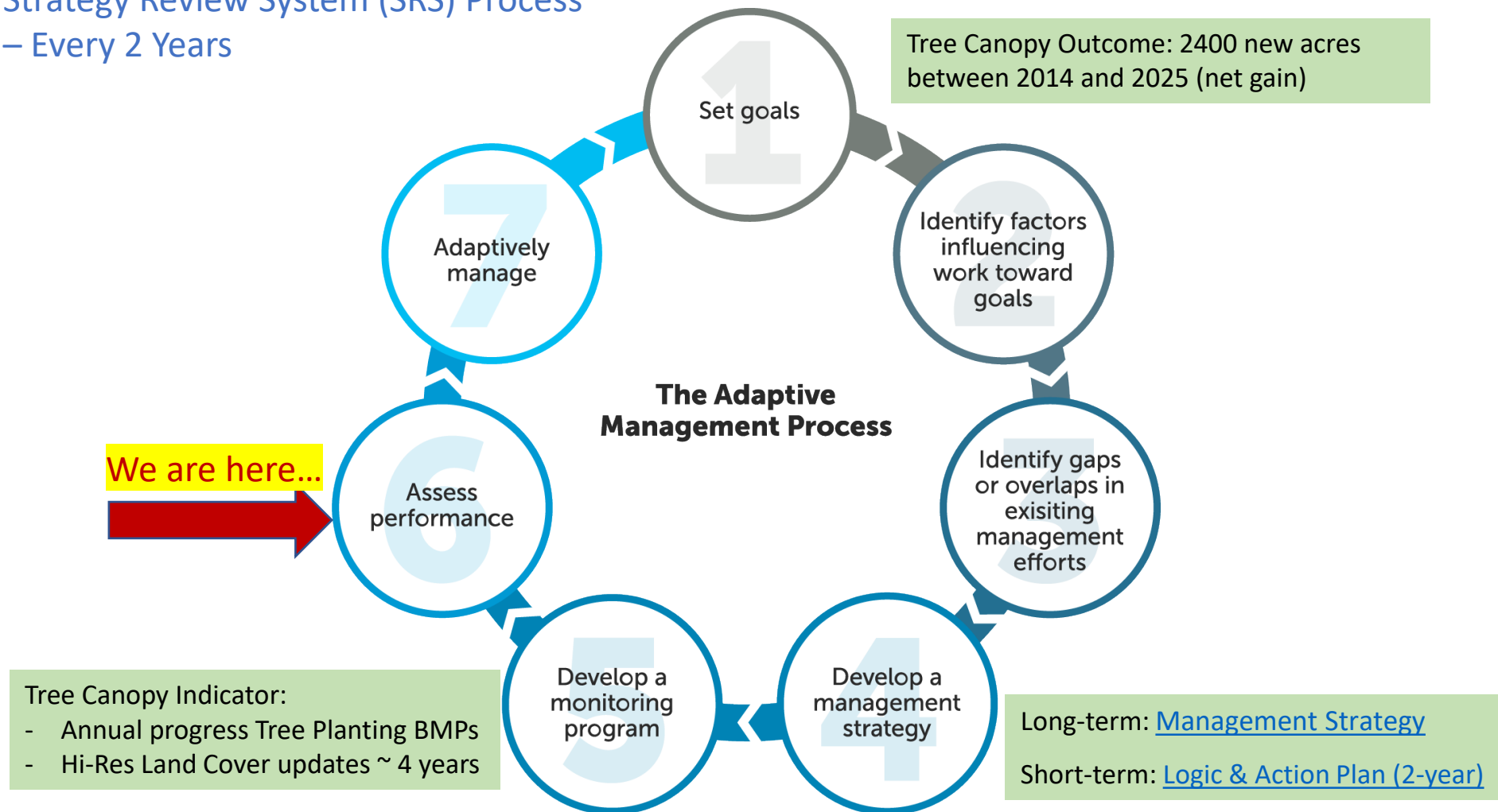
- Track tree cover gains and losses based on census-defined areas

Option 2 – Census Places + Census Urban Areas & Clusters ~~2020~~2010

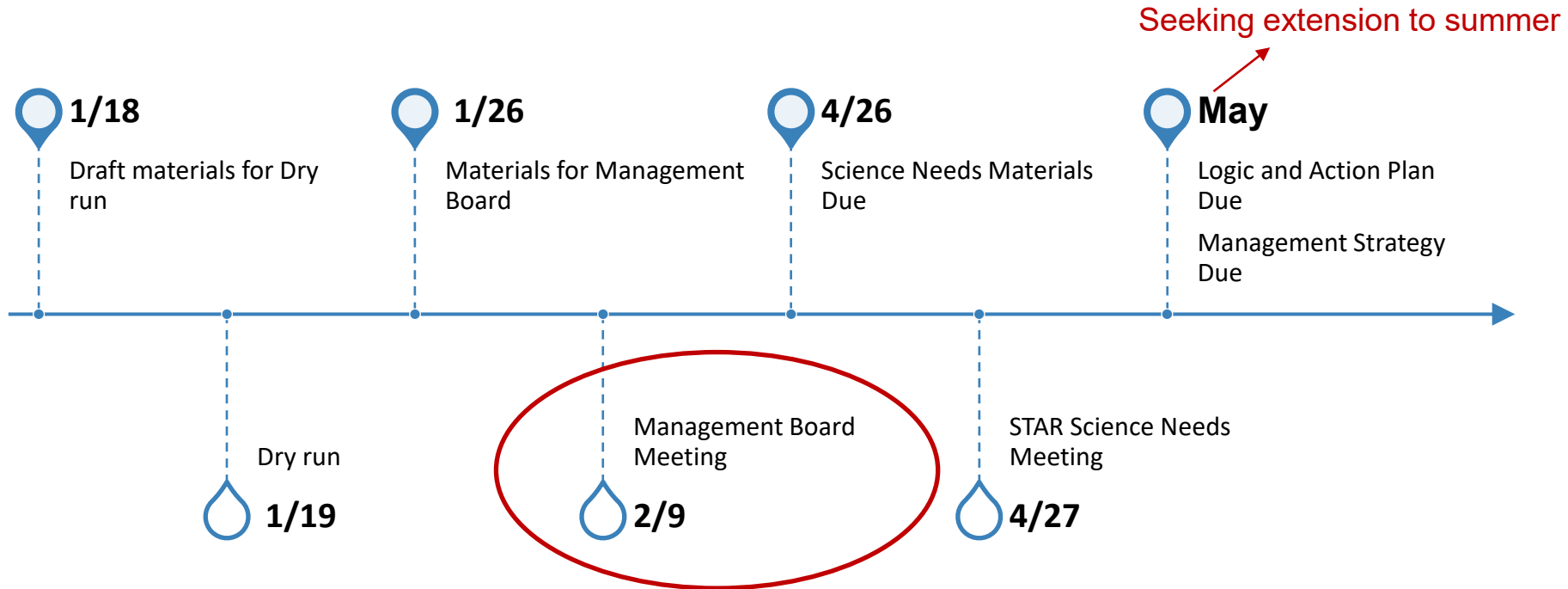
- Includes more developed/developing areas that fall outside census places – especially in headwaters, more rural areas
- Also includes a fair amount of ag and forest land that may not be as relevant for our urban/community tree canopy tracking

Strategy Review System (SRS) Process

– Every 2 Years



Full Timeline



SRS Materials for Management Board

- Logic & Action Plan – Color-coded action status
- Narrative Analysis
- Presentation Slides (~15 minutes)

Drafts of these are posted on today's Meeting Page; send comments to julie.mawhorter@usda.gov by 1/17

Logic & Action Plan Status

Action has been completed or is moving forward as planned.
Action has encountered minor obstacles.
Action has not been taken or has encountered a serious barrier.

ACTIONS – [2021-2022]					
Action #	Description	Performance Target(s)	Responsible Party (or Parties)	Geographic Location	Expected Timeline
Management Approach 3: Increase Technical Capacity and Knowledge					
3.1	Provide guidance, training, and technical assistance to help local governments and partners develop robust urban tree canopy implementation programs	<ol style="list-style-type: none"> 1. Convene biennial Tree Canopy Summit to engage urban forestry practitioners and cross-sector partners in best practices and innovative strategies 2. Collaborate with LLWG to incorporate tree canopy strategies into GIT- funded workshop for land use planners 	<ol style="list-style-type: none"> 1. USFS/FWG/ACB/Diversity WG/CBP Social Science Coordinator 2. USFS/FWG/LLWG 		<ol style="list-style-type: none"> 1. Summer-Fall 2022 2. Fall 2021-Spring 2022
3.2	Support the development of Bay-wide high resolution UTC data updated regularly (e.g. every 5 years) to track progress/net gain;	<ol style="list-style-type: none"> 1. Assess and communicate Tree Canopy status & change (2013-2018) to stakeholders through i) a Bay-wide Summary Report and ii) local (county) fact sheets 2. Test and refine as needed the methodology for the Tree Canopy Indicator; identify and pursue further research, analysis/ interpretation, and tools needed surrounding drivers of losses and gains (potential STAC workshop proposal) 	<ol style="list-style-type: none"> 1. USFS/FWG/USGS/Chesapeake Conservancy/Communications Team/Local Engagement Team/Local Action Cohort 2. USFS/FWG/USGS 		<ol style="list-style-type: none"> 1. Summer 2021-Spring 2022 2. Summer 2021-Spring 2022
3.3	Develop and share data, tools and best practices for advancing tree equity <i>(note: action modified from prior workplan to address current priorities)</i>	<ol style="list-style-type: none"> 1. Building on the CBP <u>Environmental Justice and Equity Dashboard</u>, synthesize and disseminate environmental justice and climate resilience-related datasets, tools and resources that can best support local tree equity initiatives 2. Explore opportunities with the CRWG and Diversity WG to connect the change in high temperature extremes indicator with the tree canopy indicator. 	1&2. USFS/FWG/USGS/NOAA/Diversity WG CRWG	Bay-wide	1. Summer-Fall 2021

In our color coding, yellow/red indicates delayed into next cycle due to focus on completing the green items first; not due to obstacles or serious barriers

Highlights to Celebrate

- Tree Canopy policy/program advances in each State
- Tree Canopy Funding & Policy Roundtable (FY22 GIT)
- Natural Filters Pilot Project (FY22 GIT)
- New Bay-wide Tree Canopy & Change Data
- County Tree Cover Status & Change Fact Sheets
- Updated Tree Module - CB Local Government Curriculum
- Tree Campaign Outreach/Communication Assessment
- Chesapeake Trees and Schools Guide
- New Tree Stewards programs MD and DE

Coming Soon...

2023 Tree Canopy Summit (virtual)

State of Chesapeake Forests 2.0 StoryMap

Addressing Regional Tree Supply (FY23 GIT)

New IRA funding supporting tree equity!!!