

Update on CBPO Urban Stormwater Work and its relation to CBWM refinements

Tom Schueler
Chesapeake Stormwater Network
www.chesapeakestormwater.net



Key Points

- Urban BMP Expert Panel Update
- Some CBWM Refinements

Current Expert Panels

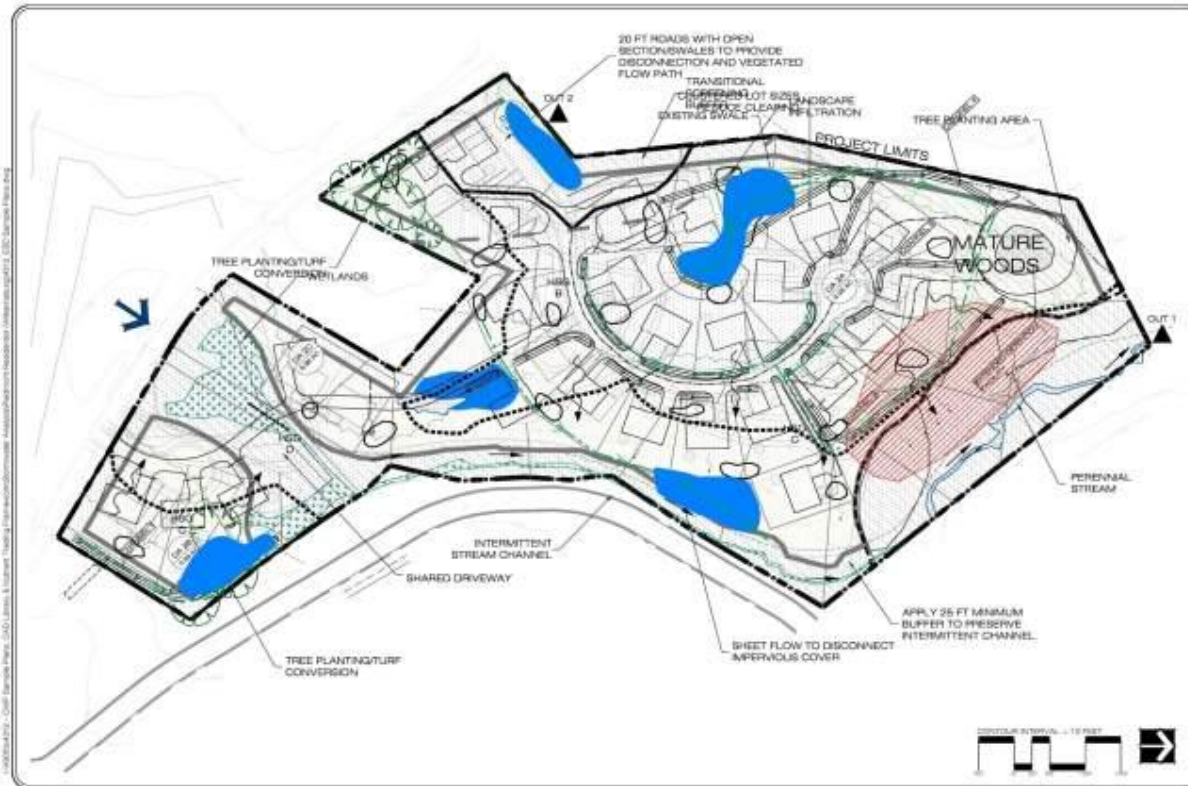
- Stormwater Retrofits
- New State Stormwater Standards
- Urban Fertilizer Management
- Stream Restoration

Stormwater Retrofits

- Broad group of practices:
 - New retrofit facilities
 - BMP conversions (e.g., a dry ED pond to a constructed wetland)
 - Enhance design or volume of existing BMPs
 - Green street retrofits
 - On-site LID retrofits
 - BMP Restoration

Panel 2

New State Stormwater Performance Standards



Applies to Both New Development and Redevelopment Projects.

Panel 3. Urban Fertilizer Management



- Effect of Recent State-wide Fertilizer P Bans
- Effect of Local Outreach Programs on Reducing N Fertilization
- Reduced Use of N on Public Land

4. Stream Restoration Panel



- Updating old rates
- Defining Qualifying projects
- Reporting, tracking and verification

SUMMER 2012 ?

Future Expert Panels

- Enhanced E&S Controls
- Elimination of Illicit Discharges
- Reconvene Street Sweeping Panel
- Urban Tree Planting
- July 25 Floating Island Research Webcast

Urban BMP Verification

- Working on 14 Broad Principles for Reporting, Tracking and verifying Urban BMPs
- Working on more detailed verification protocols for each approved urban BMP
- Double Counting Issue

Some Urban CBWM Refinements

- Finer characterization of pervious land categories (e.g., fertilized, non-fertilized, hi risk, low risk, compacted, non-compacted)
- Better accounting for urban N sources at river basin segment scale (septics, stormwater, illicit discharges, other sources)
- Improved urban stream erosion sediment dynamics

Other Issues

- Variability in Perv and Imperv Nutrient Loads Across Watershed (Need to explain)
- Better tools to show local progress in load reductions over time
- Changes in CAST to reflect new urban BMP recommendations