

CBP Draft Phase 6 Watershed Model

Gary Shenk – USGS - Chesapeake Bay Program

Presentation to MWG

6/15/16

This information is being provided to meet the need for timely best science.
The information is provided on the condition that neither the U.S. Geological
Survey nor the U.S. Government shall be held liable for any damages
resulting from the authorized or unauthorized use of the information.

Preliminary Information-Subject to Revision.
Not for Citation or Distribution

Draft Phase 6 Released 6/1



File Edit View History Bookmarks Tools Help

Modeling Workgroup - Ches x +

www.chesapeakebay.net/groups/group/modeling_team 80% Search

Members Meetings Workgroups & Task Groups Projects & Resources Publications

Draft Phase 6

This project page is the repository for the Phase 6 model, its documentation, as well as files and links to Tableau pages. Please email Kyle Hinson (khinson@chesapeakebay.net) with any questions you may have.

Documentation

All documentation files will be uploaded to this FTP site to assist in partnership review of Phase 6:
ftp://ftp.chesapeakebay.net/modeling/Phase6/Draft_Phase_6/Documentation/

Calibration

A summary PDF of calibration results has been generated and is available for download (large file): ftp://ftp.chesapeakebay.net/modeling/Phase6/Draft_Phase_6/Watershed_Model/WSM_Outputs/Calibration_Figures/00_Calibration_Figures_All_Phase6Draft.pdf

Other detailed calibration results for each calibrated parameter and river segment can be found in a separate FTP folder: ftp://ftp.chesapeakebay.net/modeling/Phase6/Draft_Phase_6/Watershed_Model/WSM_Outputs/Calibration_Figures/

Further detailed calibrated output for the watershed can be found in csv files located at this FTP site: ftp://ftp.chesapeakebay.net/modeling/Phase6/Draft_Phase_6/Watershed_Model/WSM_Outputs/Summary_Loads/

Further comparisons between the Watershed Model and WRTDS can be found at the non-tidal dashboard. These visual representations show both the loads estimated from monitoring data (WRTDS) and loads estimated from the Draft Phase 6 Model: <http://cast-beta.chesapeakebay.net/documentation/NonTidalWaterQualityDashboard>

Land Use Data

Land use files can be found at this FTP site: ftp://ftp.chesapeakebay.net/Modeling/Phase6/Draft_Phase_6/Land_Use/

Watershed Model Inputs

Links to the sites for Watershed Model Inputs can be found at these web pages:

CAST Homepage (Note: The Phase 6 CAST Beta will be directed here until June 15): <http://cast-beta.chesapeakebay.net/>

Phase 6 Soil Phosphorus Figures: <ftp://ftp.chesapeakebay.net/Modeling/soil-p-history/fig/>

Model Review Process

The process by which the partnership can most effectively submit comments and provide feedback to the development of the Phase 6 model will be outlined in a continuously updated document found below. The schedule of upcoming webinars is also provided below. Please contact Lewis Linker (llinker@chesapeakebay.net) or Kyle Hinson (khinson@chesapeakebay.net) with any questions.

Phase 6 Sediment Simulation Webinar: April 19, 2017, 1 PM - 3 PM ([webpage link](#), [recording link](#))

Phase 6 Integrated Models and Decision Framework Overview Webinar: May 9, 2017, 1 PM - 3 PM ([webpage link](#), [recording link](#))

Phase 6 CBP Model Poultry Data Webinar: May 24, 2017, 1 PM - 3 PM ([webpage link](#), [recording link](#))

Phase 6 Inputs Webinar: May 25, 2017, 1 PM - 3 PM ([webpage link](#), [recording link](#))

Phase 6 Loads Webinar: June 1, 2017, 1 PM - 3 PM ([webpage link](#), [recording link](#))

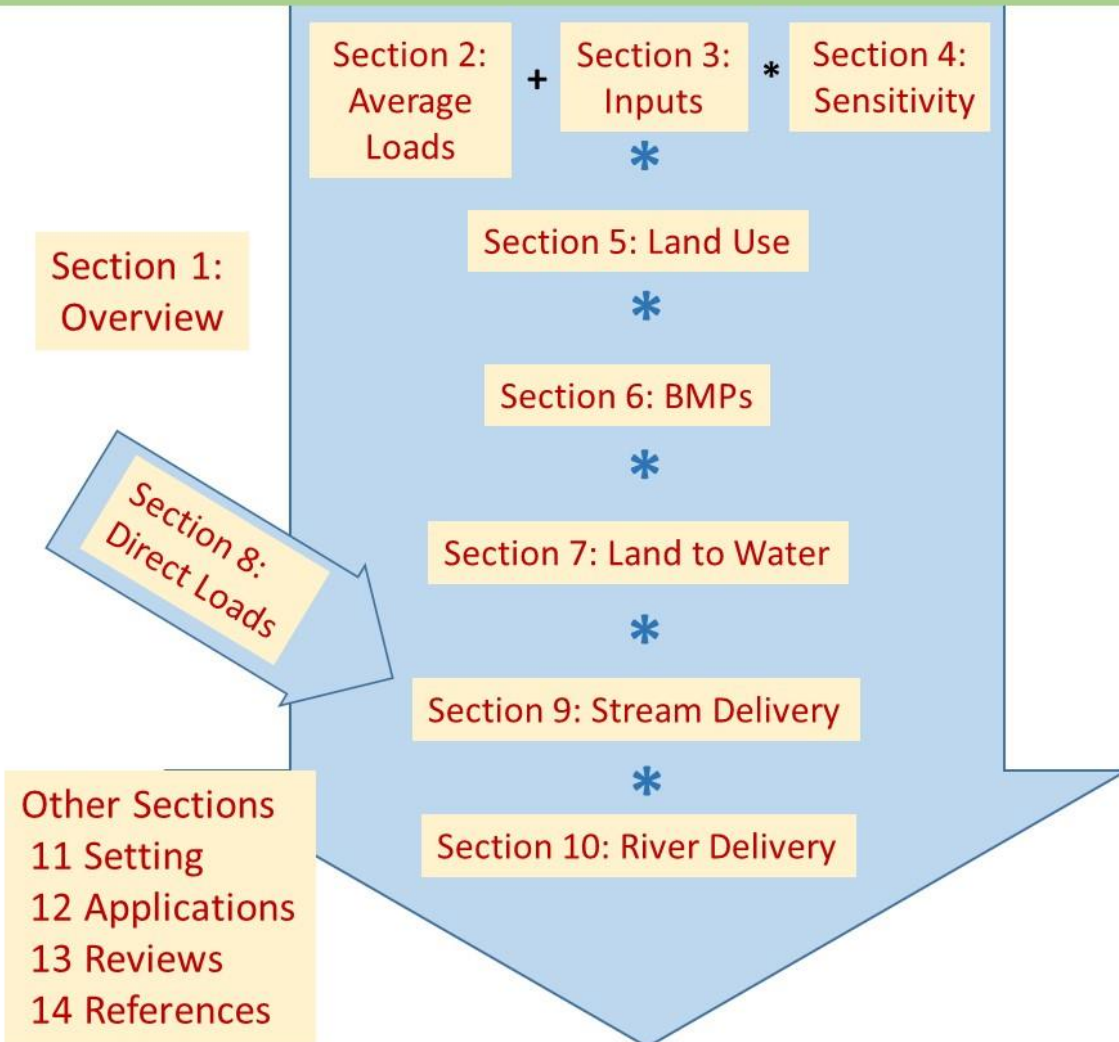
Phase 6 Physical Transport Webinar: June 20, 2017, 1 PM - 3 PM ([link](#))

Phase 6 Approval Process (622.55 KB)

Draft Phase 6 Watershed Model - Summary Statistics (3.35 MB)

Documentation

Phase 6 Model Documentation



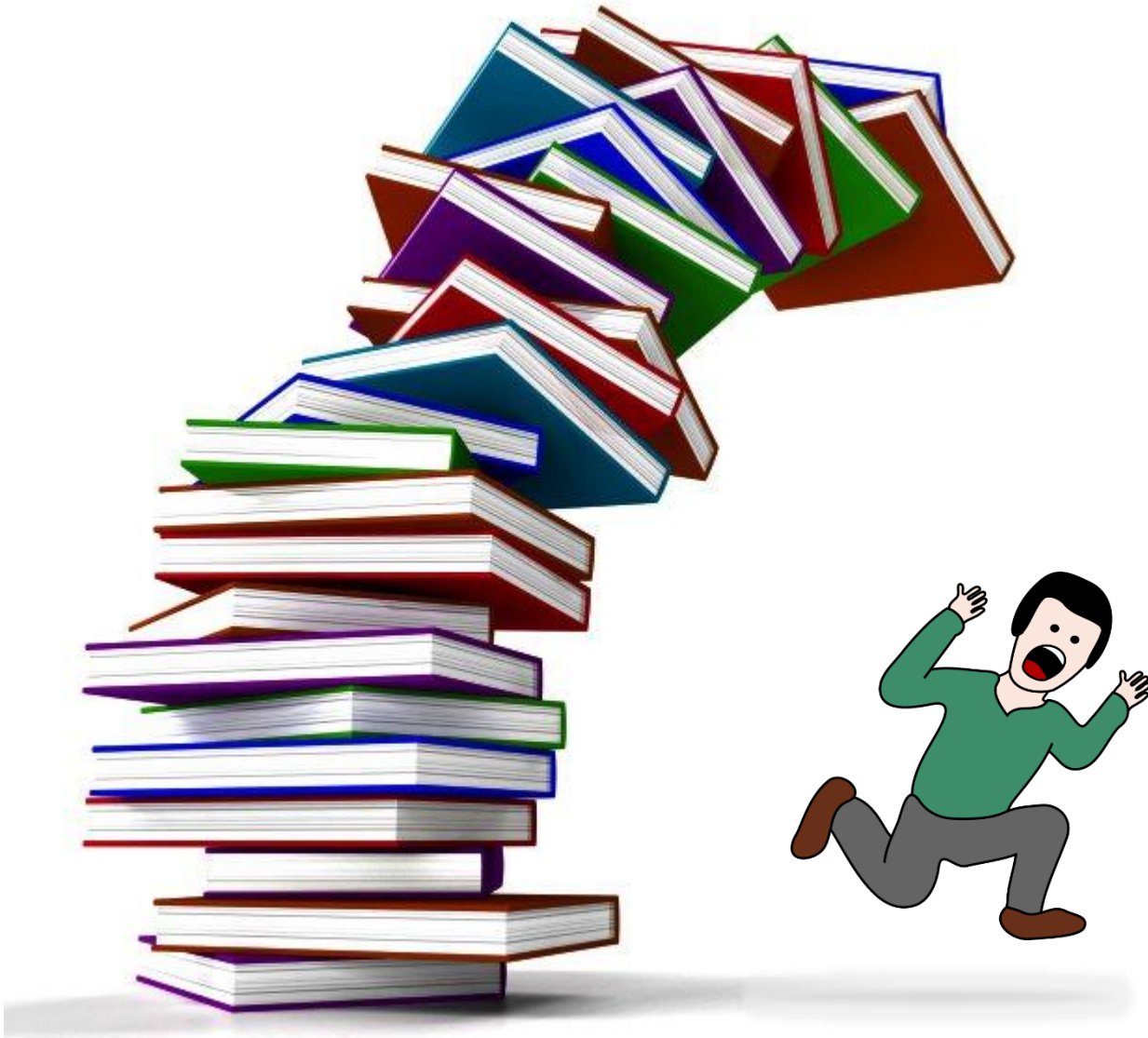
Documentation

All documentation files are uploaded to this FTP site to assist in partnership review of Phase 6:

https://archive.chesapeakebay.net/modeling/Phase6/Draft_Phase_6_Documentation/

504 pages of documentation
405 pages of appendices

Review Strategy



Review Strategy

- Read Chapter 1
- Target Chapters and Sections that are important to you
- Main Prediction of CAST for decision support:
Change in Anthropogenic Load
 - BMPs
 - WWTP
 - Land use Change
 - Response to Change in inputs

Review Strategy

- Read Chapter 1
- Target Chapters and Sections that are important to you
- Main Prediction of CAST for decision support:
Change in Anthropogenic Load
 - BMPs
 - WWTP
 - Land use Change
 - Response to Change in inputs

Calibration

Calibration

A summary PDF of calibration results has been generated and is available for download https://archive.chesapeakebay.net/modeling/Phase6/Draft_Phase_6/Watershed_Model/WSM_Outputs/Calibration_Figures/00_Calibration_Figures_All_Phase6Draft.pdf

Detailed calibration results for each calibrated parameter and river segment can be found in a separate FTP folder:

https://archive.chesapeakebay.net/modeling/Phase6/Draft_Phase_6/Watershed_Model/WSM_Outputs/Calibration_Figures/

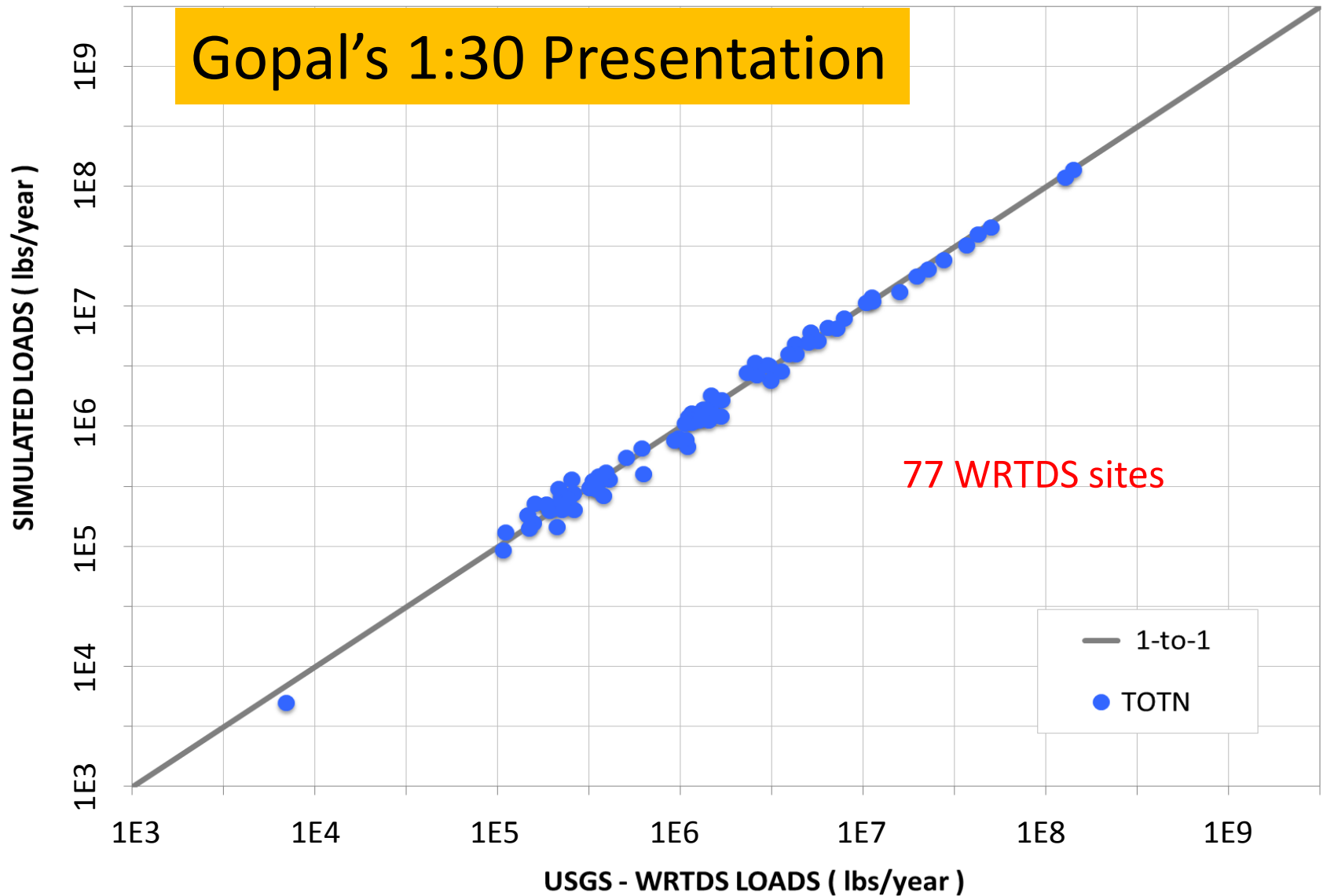
Further detailed calibrated output for the watershed can be found in csv files located at this FTP site:

https://archive.chesapeakebay.net/modeling/Phase6/Draft_Phase_6/Watershed_Model/WSM_Outputs/Summary_Loads/

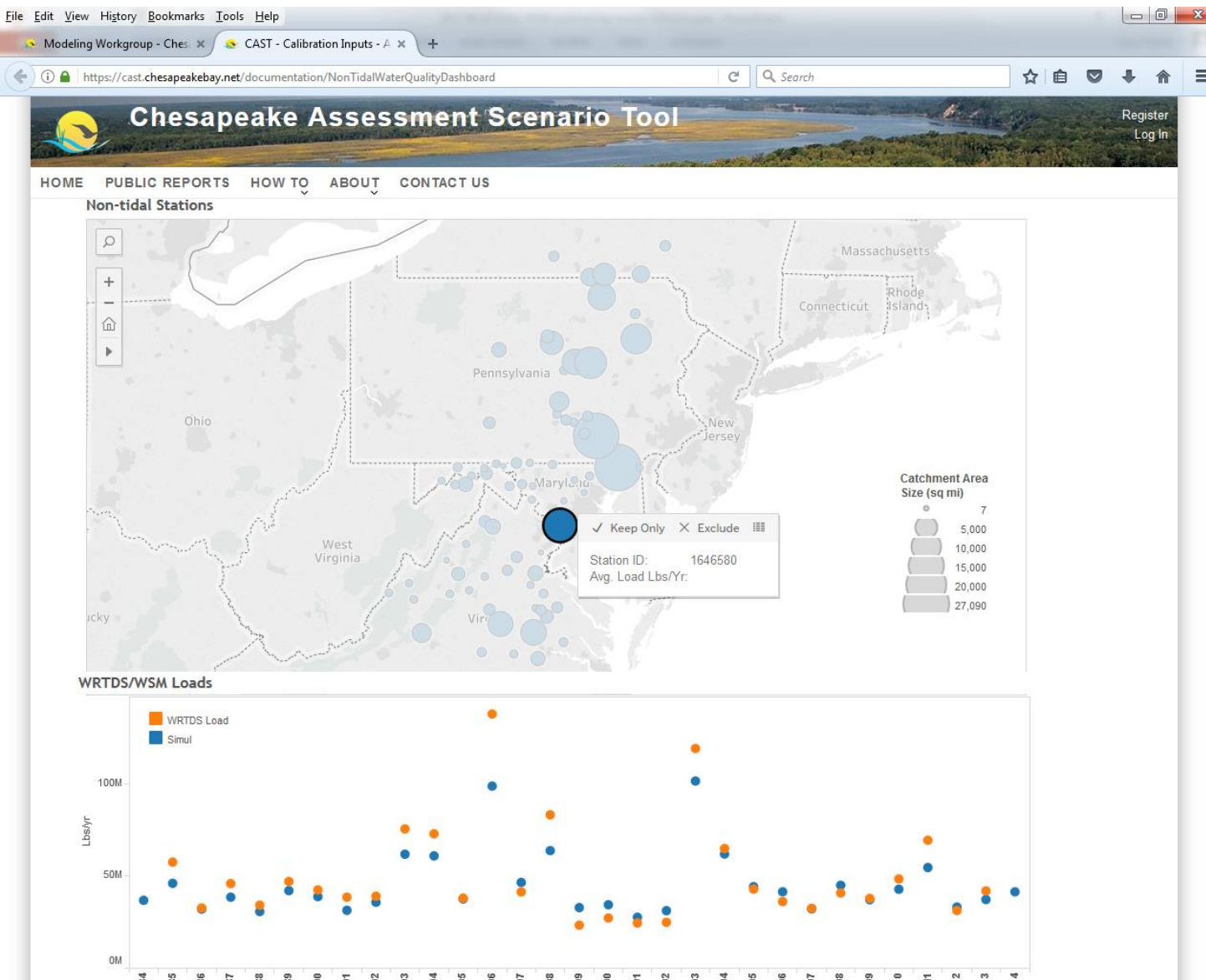
Further comparisons between the Watershed Model and WRTDS can be found at the non-tidal dashboard. These visual representations show both the loads estimated from monitoring data (WRTDS) and loads estimated from the Draft Phase 6 Model: <http://cast-beta.chesapeakebay.net/documentation/NonTidalWaterQualityDashboard>

Preliminary Information Subject to Revision.

Not for Citation or Distribution



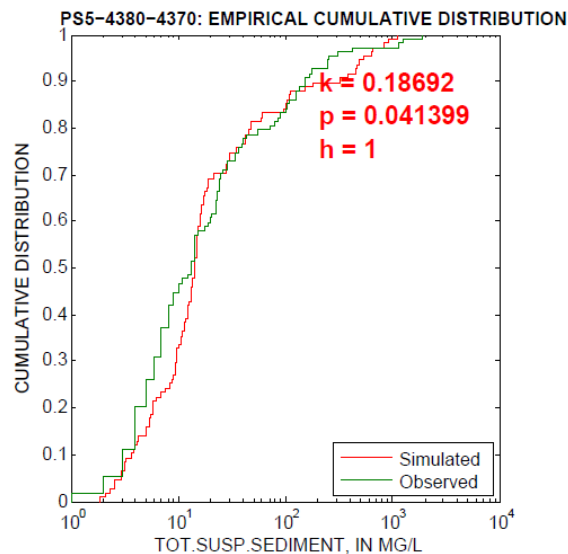
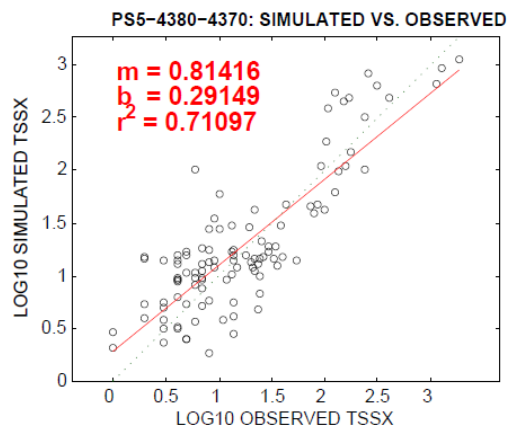
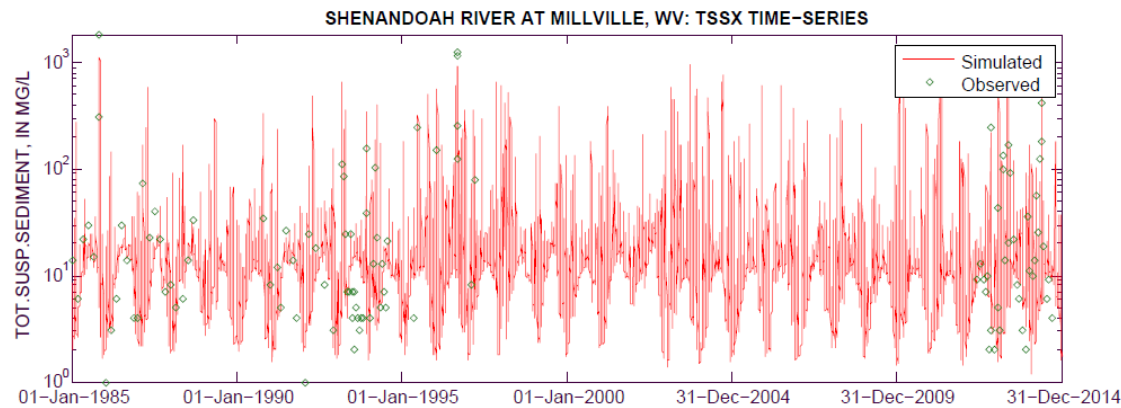
Calibration



Comparison
of WRTDS
and WSM
Annual
Loads

Preliminary Information-Subject to Revision.
Not for Citation or Distribution

Calibration



DATA SELECTION		
scenario		file
P620170331WQ		TSSX.calib
plot		
TSSX - total suspended ...		
Dates	1/1/1985	12/31/201
Drive	Directory	Observed
N/A	model	OBS20161101

STATISTICS		
n	107	107
	observe	simulate
min	1	1.8899
	0	0.276439
mean	79	83.8722
	1.21965	1.28448
media	13	14.088
	1.11394	1.14885
max	1850	1125
	3.26717	3.05115
varian	59483.4	39454.3
	0.455503	0.42468
JB	0.001	0.001
	0.009402	0.003061
	ra	log
%	6.16728	5.31553
err.va	16982.9	0.142719
rel.std.err	0.285507	0.313322
mod.eff	0.714493	0.686678

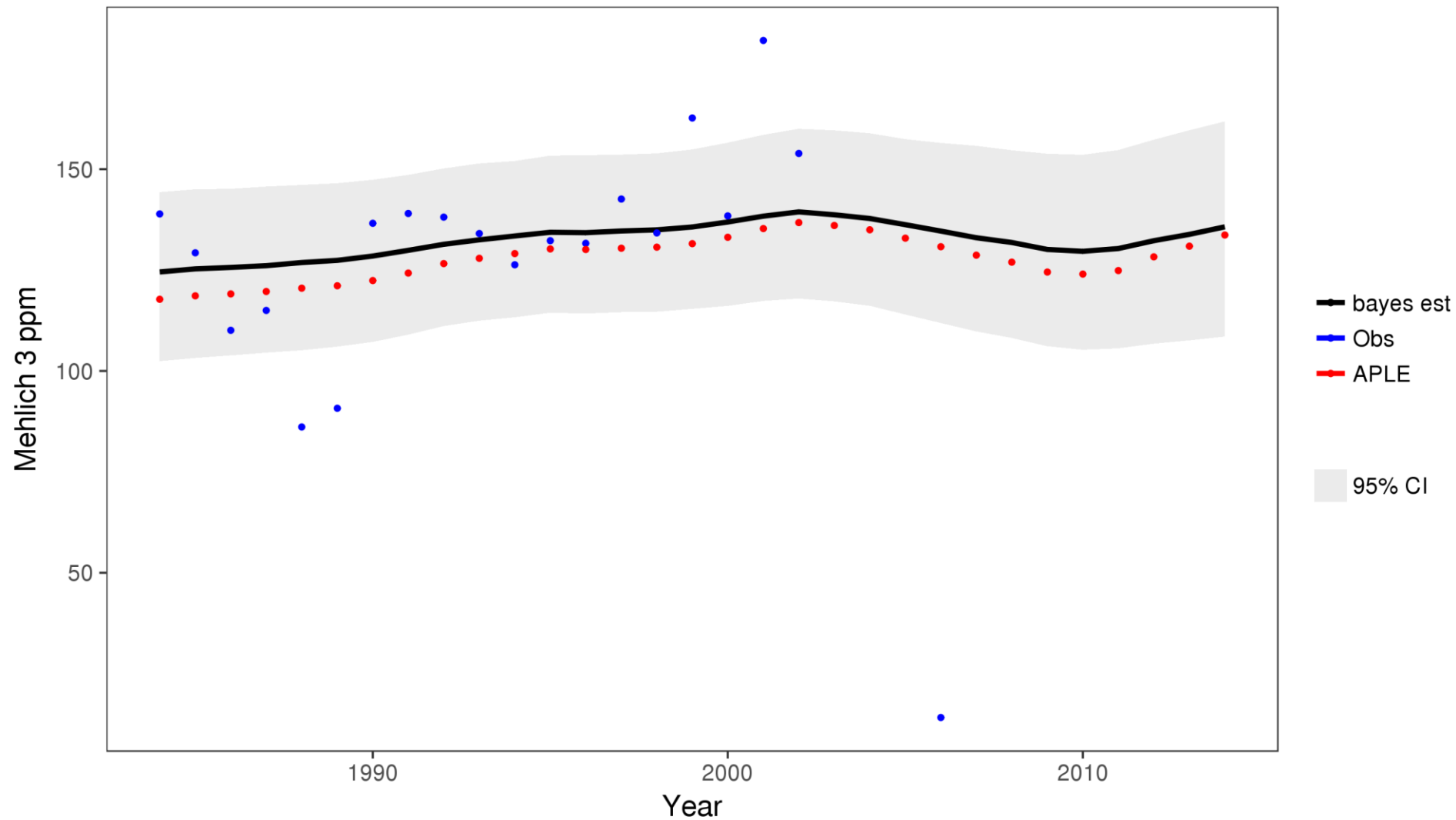
4985 Plots in one file
4985 separate files

V
E
R
S
I
O
N

Input Data

- Land use files can be found at this FTP site:
 - https://archive.chesapeakebay.net/Modeling/Phase6/Draft_Phase_6/Land_Use/
- Phase 6 Soil Phosphorus Figures:
 - <https://archive.chesapeakebay.net/Modeling/soil-p-history/fig/>
- CAST Homepage (Note: The Phase 6 CAST Beta will be directed here until June 15):
 - <http://cast.chesapeakebay.net/>

N24039 Est Soil History



Double Crops in Somerset County, Maryland



Chesapeake Assessment Scenario Tool

[HOME](#) [PUBLIC REPORTS](#) [HOW TO](#) [ABOUT](#) [CONTACT US](#)

Frequently requested data and information associated with water quality monitoring and modeling.

MODEL DOCUMENTATION

Find additional information about the Phase 6 model, its documentation and links to model review webinars and files.

[Learn More](#)

TRANSITION TO PHASE 6

Get answers to your questions about the transition to the new Chesapeake Bay Partnership's Phase 6 Modeling tools.

[Phase 6 FAQs](#)

SOURCE DATA

Download data tables including information on load sources and agencies, BMPs, animals, geographic references and delivery factors.

[View Source Data](#)

CALIBRATION INPUTS

Find graphs and maps of inputs to the Phase 6 Watershed Model Calibration for all versions.

[View Inputs](#)

BMPs, MODELS & GEOGRAPHY

View additional information on BMPs, CBP Partnership Models, Shapefiles and Geographical Information.

[Learn More](#)

TMDL TRACKING

Information on how to submit progress data via NEIEN and view implementation data on meeting the Chesapeake Bay TMDL.

[TMDL Tracking](#)

OPTIMIZATION

Resources to determine cost effectiveness of BMPs in units of dollars per pound reduced.

[Learn More](#)

RIVER TRENDS

Scientists calculate flow-adjusted trends in nitrogen, phosphorus and sediment levels to better determine whether pollution has changed over time.

[View Trends](#)



Chesapeake Assessment Scenario Tool

HOME PUBLIC REPORTS HOW TO ABOUT CONTACT US

Frequently requested data and information associated with water quality monitoring and modeling.

MODEL DOCUMENTATION

Find additional information about the Phase 6 model, its documentation and links to model review webinars and files.

[Learn More](#)

TRANSITION TO PHASE 6

Get answers to your questions about the transition to the new Chesapeake Bay Partnership's Phase 6 Modeling tools.

[Phase 6 FAQs](#)

SOURCE DATA

Download data tables including information on load sources and agencies, BMPs, animals, geographic references and delivery factors.

[View Source Data](#)

CALIBRATION INPUTS

Find graphs and maps of inputs to the Phase 6 Watershed Model Calibration for all versions.

[View Inputs](#)

BMPs, MODELS & GEOGRAPHY

View additional information on BMPs, CBP Partnership Models, Shapefiles and Geographical Information.

[Learn More](#)

TMDL TRACKING

Information on how to submit progress data via NEIEN and view implementation data on meeting the Chesapeake Bay TMDL.

[TMDL Tracking](#)

OPTIMIZATION

Resources to determine cost effectiveness of BMPs in units of dollars per pound reduced.

[Learn More](#)

RIVER TRENDS

Scientists calculate flow-adjusted trends in nitrogen, phosphorus and sediment levels to better determine whether pollution has changed over time.

[View Trends](#)



Chesapeake Assessment Scenario Tool

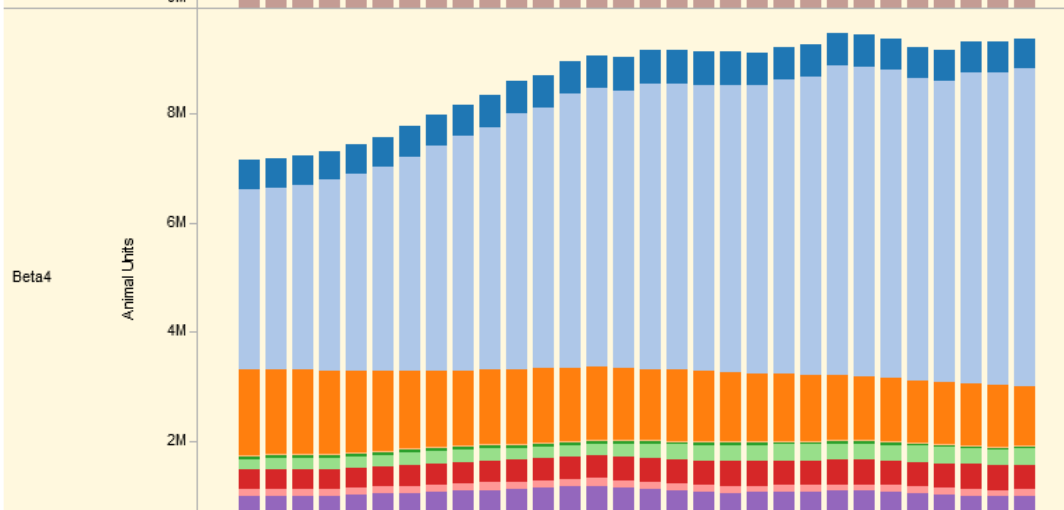
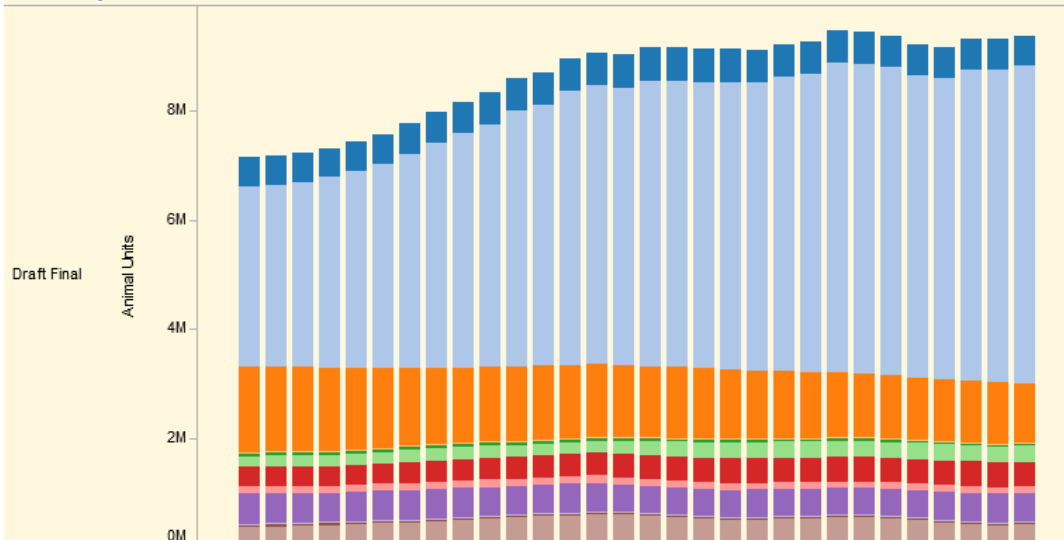
[Register](#)
[Log In](#)[HOME](#) [PUBLIC REPORTS](#) [HOW TO](#) [ABOUT](#) [CONTACT US](#)[Introduction](#) [Data and Functionality Upgrades](#) [Animal Dashboard](#) [Animal Map](#) [Animal Units](#) [Feeding Space Nutrients](#) [Animal Unit Per Acre](#) [Riparian Pa](#)

Animal

- beef
- broilers
- dairy
- goats
- hogs and pigs for breed...
- hogs for slaughter
- horses
- layers
- other cattle
- pullets
- sheep and lambs
- turkeys

Animal Units

P6Version



P6Version

- ☒ (All)
- ☒ Draft Final
- ☒ Beta4

State

- ☒ (All)
- ☒ DE
- ☒ MD
- ☒ NY
- ☒ PA
- ☒ VA
- ☒ WV

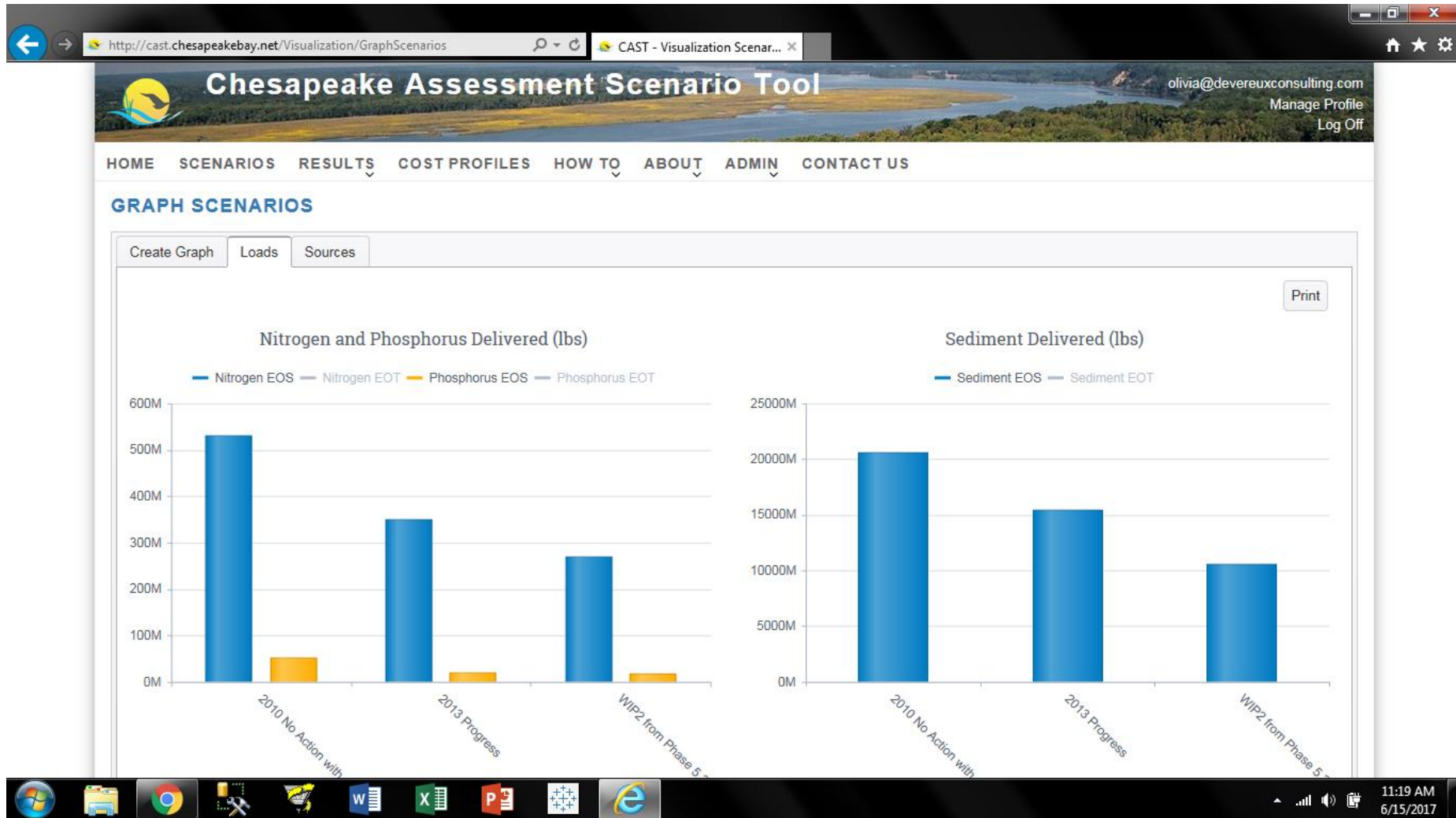
County

- ☒ (All)
- ☒ Accomack
- ☒ Adams
- ☒ Albemarle
- ☒ Alexandria
- ☒ Allegany
- ☒ Alleghany
- ☒ Amelia
- ☒ Amherst
- ☒ Anne Arundel
- ☒ Appomattox
- ☒ Augusta
- ☒ Baltimore
- ☒ Bath
- ☒ Bedford
- ☒ Berkeley
- ☒ Berks
- ☒ Blair
- ☒ Botetourt
- ☒ Bradford
- ☒ Broome
- ☒ Buckingham
- ☒ Buena Vista
- ☒ Calvert
- ☒ Cambria
- ☒ Cameron
- ☒ Campbell

Load Source

- ☒ (All)

CAST Scenarios – Today!!!



Preliminary Information-Subject to Revision.
Not for Citation or Distribution

Partnership Feedback

- Email to Gary Shenk, Matt Johnston, and/or Lewis Linker
- Different types of feedback
 - Question
 - simple email or phone call
 - not tracked
 - Discussion
 - Series of emails or calls
 - Emails saved and summarized in posted document
 - Proposed Fatal Flaw
 - After discussion
 - Raised to CBP workgroup as proposed fatal flaw
 - Tracked and recorded

Fatal Flaw Review

- June and July – Partnership ‘Fatal Flaw’ Review
 - Criterion #1 – problem with the model
 - Failure to follow partnership instructions
 - Omission of data received by 12/31/2016
 - Overall failure of calibration
 - Illogical results

AND

- Criterion #2 – Significant impairment in the ability to
 - Set planning targets
 - Assess progress

Received so far

- VA: hi-res land use
 - Identified as a fatal flaw by the WQGIT
- VA: animal numbers – under discussion
- Fairfax County: 1987 input values
 - fixed prior to Draft Phase 6
- MDA: Testing Benefits of nutrient management
 - Discussion Exercising CAST
- MDA: Using Crop uptake and crop removal
 - Discussion in AMS
- MDA: Issues for modeling soil P in future scenarios
 - Discussion in AMS

Documentation

- June 1 documentation is finalized
 - Comments may be added to PDFs
 - Additions and Errors document periodically updated
- Edits being made to Final Phase 6 documentation
 - Available on request

Schedule – Watershed Model

- April – July Input Review
- June 1 Calibration and Documentation
- June 15 Scenarios
- June and July Draft Phase 6 review
- July STAC finalizes review
- August Resolution of any fatal flaws
- August Response to STAC review
- August 14 WQGIT decides on Schedule
- September 1? Final Phase 6

Schedule – WQSTM

- June-July Partnership Review
- July 1 Interim calibration
- July STAC finalizes review
- August 1 Final calibration
- August Response to STAC review
- August 14 WQGIT decides on Schedule
- September 15? Final WQSTM

