

# LAND USE WORKGROUP – April 6, 2016

- Clustering Local Land Uses
- Turf Overlay
- Mixed Open Overlay
- Fractional Overlays
  - Turf Grass / Mixed Open (TGMO)
  - Turf Grass / Impervious Non-Road (TGINR)

# Turf Mask / Overlay

All *low vegetation* and *barren* that falls within this overlay will be classified as “Turf” in the Phase 6 land use scheme.

- Areas adjacent to buildings, driveways and parking lots
- NAVTEQ Streets Right of Way, buffered road centerlines to represent complete road, shoulder and right of way area.
- Regional Land Use Data obtained from NAVTEQ Land Use A and B datasets including:
  - AIRPORT
  - CEMETARY
  - SPORT COMPLEX
  - HOSPITAL
  - RAILYARD
  - SEAPORT/HARBOUR
  - SHOPPING CENTRE
  - AMUSEMENT PARK
  - ANIMAL PARK
  - GOLF COURSE

# Turf Mask / Overlay, continued..

All *low vegetation* and *barren* that falls within this overlay will be classified as “Turf” in the Phase 6 land use scheme.

- Local Parcels where, "Acres"  $\leq 10$  AND "PCT\_IMP"  $\geq 0.01$ ) OR ("Acres"  $> 10$  AND "PCT\_IMP"  $\geq 0.1$ ).

Note: this query allows for the inclusion of large parcels with large areas of impervious in the developed mask because such parcels are not likely farms.

- Local Land Use Data

1. Residential (check against aerials to ensure farms are not included). If so, use polygon area threshold of  $\leq 10$ -acres on residential land uses to exclude potential farms).
2. Commercial
3. Industrial
4. Recreation
5. Transportation

# Turf Mask / Overlay, Continued

- Local Land Use data can come in many forms and in some cases planimetric data (line work), land use (grid or features), or other information is available. We have attempted to classify some of these potential categories that we are aware of.

- Mixed/Single Family residential
- Single Family Dwellings
- Multi-family dwellings
- Mobile Homes (Some Mixed Open)
- Retail, wholesale, professional
- Other commercial
- Parking lots
- Airports
- Marinas/Ports/Docks (Some Mixed Open)
- Other Urban
- Recreational
- CAFOs
- Farmsteads (surrounding buildings, not the farm itself)

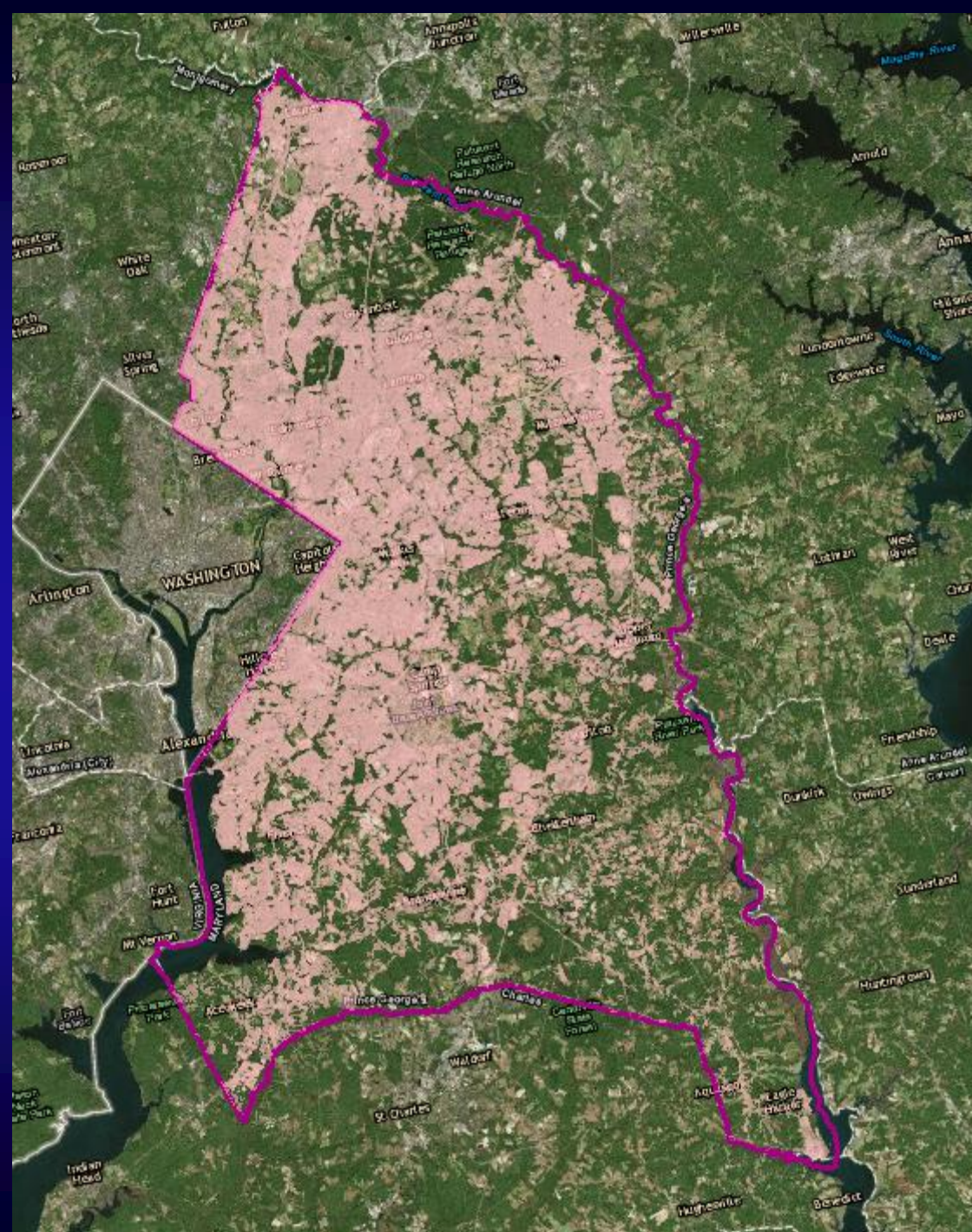












# Mixed Open Space Mask / Overlay

- All *low vegetation* and *barren* that falls within this overlay will be classified as “Mixed Open” in the Phase 6 land use scheme.
- Shrub-Scrub from 1m Land Cover
- Forest Patches < 1 acre
- Regional Land Use Data obtained from NAVTEQ Land Use A and B datasets including:
  - BEACHES
- Additional categories to be derived from ancillary State, regional and local data sources where available.
  - Extractive (*some mixed open and INR, better for fractional overlay?*)
  - Quarries
  - Landfills
  - Vacant Lots
  - Sandy Rocky Outcrops and waterbody margins (calculated)

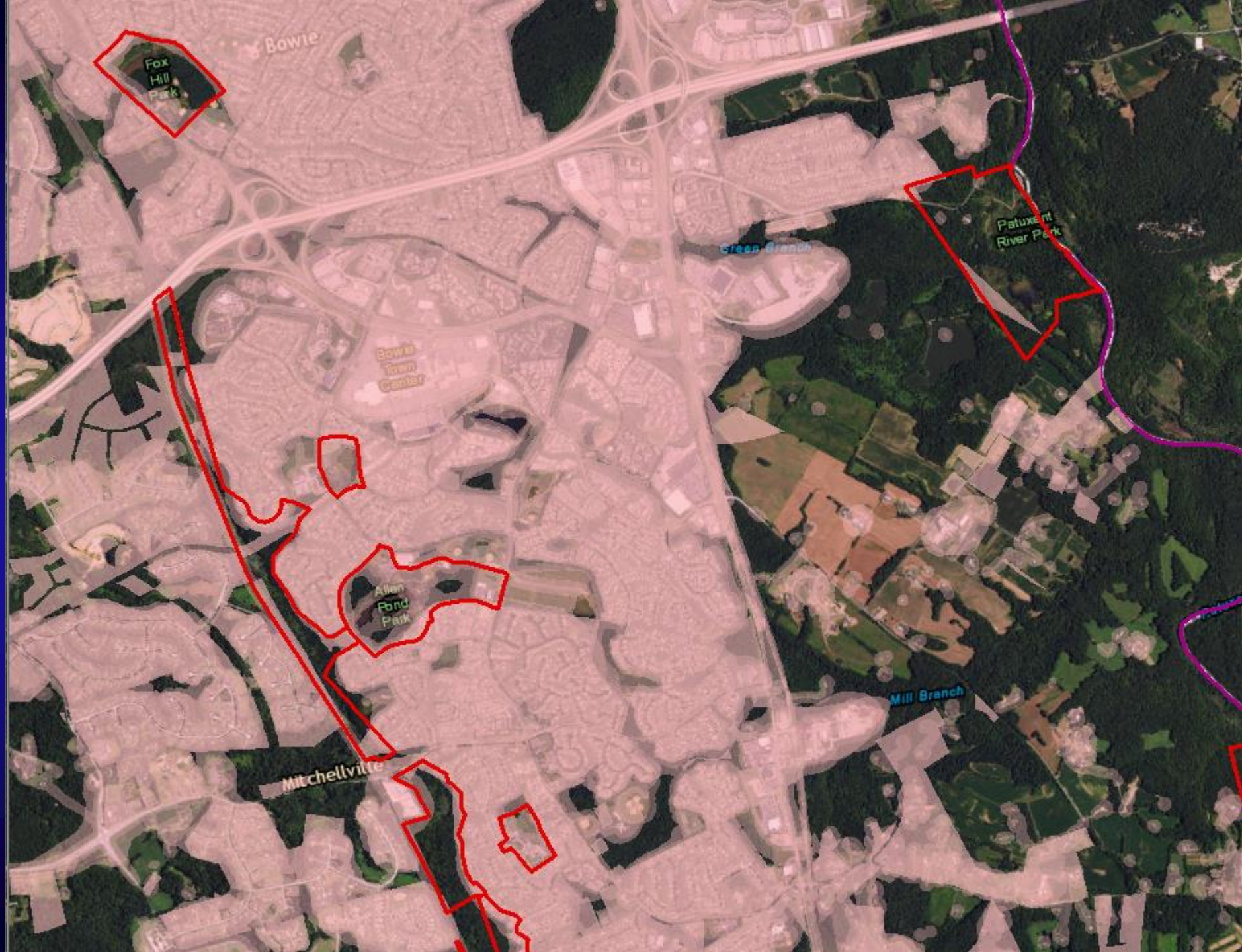


## Mixed Open Space Mask / Overlay, Cont.

Local Land Use data can come in many forms and in some cases planimetric data (line work), land use (grid or features), or other information is available at the county scale. We have attempted to classify some of these potential categories that we are aware of.\*

- Other Transportation and Utilities (e.g., Transmission lines)
- Utilities
- Herbaceous rangeland
- Shrub / Brush
- Mixed Rangeland
- Beaches and River banks
- Inland Sandy areas

\*Based on Delaware land use categories





# Fractional Overlays

All *low vegetation* and *barren* that falls within this overlay will be classified as “**Turf Grass/Mixed Open**” OR “**Turf Grass/Impervious Non-road**” in the Phase 6 land use scheme.

- Regional Land Use Data obtained from NAVTEQ Land Use A and B datasets including:
  - UNIVERSITY/COLLEGES AND/OR Local Data Related to Institutional Grounds and Campuses
  - COMMERCIAL/INDUSTRIAL
  - HOSPITAL
  - INDUSTRIAL COMPLEX
  - MILITARY BASE
  - PARK (CITY/COUNTY)
  - PARK (STATE)
  - PARK/MONUMENT (NATIONAL)
- Additional categories to be derived from ancillary State, regional and local data sources where available.
  - Military Installations and Federal Facilities
  - Parcel Data (larger parcels have a combination of turf and open space) - TGMO
  - Warehouses / Industrial – TGINR
  - Junk Salvage

# Questions and Decisions

- What to do when overlays, intersect. Is there a rule we can create to give one overlay precedence over the other?
- Are the land uses and ancillary data grouped into the right overlay categories?
- To what extent shall an analyst spend time deciphering local land use data?
- Are the road right of way methods okay?



# Thanks

**Renee Thompson**

**Geographer, USGS - Chesapeake Bay Program Office**

**(410)267-5749**

**[rthompson@chesapeakebay.net](mailto:rthompson@chesapeakebay.net)**