

# Version 1 vs Version 2 (final) Land Use

**Peter Claggett<sup>1</sup>, Labeeb Ahmed<sup>1</sup>, Jacob Czawlytko<sup>2</sup>, Sean MacFaden<sup>3</sup>, Patrick McCabe<sup>2</sup>, Sarah McDonald<sup>1</sup>, Emily Mills<sup>2</sup>, Jarlath O'Neill-Dunne<sup>3</sup>, Katie Walker<sup>2</sup>**

<sup>1</sup> Lower Mississippi-Gulf Water Science Center, U.S. Geological Survey

<sup>2</sup> Chesapeake Conservancy's Conservation Innovation Center

<sup>3</sup> University of Vermont's Spatial Analysis Laboratory

**Land Use Workgroup Meeting  
April 20, 2022**

## 1. Impervious, Roads

- 2.1 Impervious
  - 2.1.1 Roads

## 2. Impervious, Structures

- 2.1 Impervious
  - 2.1.2 Structures

## 3. Impervious, Other

- 2.1 Impervious
  - 2.1.3 Other Impervious
- 4.2 Solar fields
  - 4.2.1 Impervious

## 4. Tree Canopy Over Impervious

- 2.1 Impervious
  - 2.1.4 Tree Canopy over Impervious

## 5. Turf Grass

- 2.2 Pervious, Developed
  - 2.2.1 Turf Grass

## 6. Tree Canopy over Turf Grass

- 2.2 Pervious, Developed
  - 2.2.4 Tree Canopy over Turf Grass

## 7. Pervious Developed, Other

- 2.2 Pervious, Developed
  - 2.2.2 Transitional- barren
  - 2.2.3 Suspended Succession
- 4.2 Solar fields
  - 4.2.2 Pervious

## General Land Use Classes

### 8. Forest

- 3.1 Forest ( $\geq 1$  acre, 240-ft width)
- 5.1 Tidal
  - 5.1.5 Forest ( $\geq 1$  acre, 240-ft width)
- 5.2 Riverine (Non-tidal)
  - 5.2.5 Forest ( $\geq 1$  acre, 240-ft width)
- 5.3 Terrene/Isolated (Non-tidal)
  - 5.3.5 Forest ( $\geq 1$  acre, 240-ft width)

### 9. Tree Canopy, Other

- 3.2 Other Tree Canopy
- 5.1 Tidal
  - 5.1.4 Other Tree Canopy
- 5.2 Riverine (Non-tidal)
  - 5.2.4 Other Tree Canopy
- 5.3 Terrene/Isolated (Non-tidal)
  - 5.3.4 Other Tree Canopy

### 10. Harvested Forest

- 3.3 Harvested Forest ( $\leq 3$  years)

### 11. Natural Succession

- 3.4 Natural Succession ( $> 3$  years)
- 5.4 Bare shore, Water Margins

### 12. Wetlands, Tidal non-forested

- 5.1 Tidal Wetlands
  - 5.1.1 Barren
  - 5.1.2 Herbaceous
  - 5.1.3 Scrub-shrub

### 13. Wetlands, Riverine Non-forested

- 5.2 Riverine Wetlands (Non-tidal)
  - 5.1.1 Barren
  - 5.1.2 Herbaceous
  - 5.1.3 Scrub-shrub

### 14. Wetlands, Terrene Non-forested

- 5.3 Terrene/Isolated Wetlands (Non-tidal)
  - 5.1.1 Barren
  - 5.1.2 Herbaceous
  - 5.1.3 Scrub-shrub

### 15. Extractive

- 4.3 Extractive (active mines)
  - 4.3.1 Barren
  - 4.3.2 Impervious

### 16. Cropland

- 4.1 Agriculture
  - 4.1.1 Cropland
  - 4.1.3 Orchard/vineyard

### 17. Pasture/Hay

- 4.1 Agriculture
  - 4.1.2 Pasture/Hay

### 18. Water

- 1.1 Estuarine/ Marine
- 1.2 Lentic
- 1.3 Lotic

Land Cover: Version 1 vs Version 2  
Dorchester County, Maryland

Version 2	2017/18											
2013/14	Barren	Impervious Roads	Impervious Structures	Low Vegetation	Other Impervious	Scrub\Shrub	Tree Canopy	TCI-Roads	TCI-Structures	TCI-Other	Water	Grand Total
Barren			0.2	44.3			4.8				5.3	54.6
Emergent Wetlands	21.5		0.4	5.9	2.9		1.1				1.5	33.2
Impervious Roads				1.0	0.7		3.3	0.1				5.1
Impervious Structures	0.0			6.1	4.9		0.8		0.0			11.9
Low Vegetation	126.3	0.2	54.1		117.2	31.3	1,401.9				22.1	1,753.2
Other Impervious	2.1	1.1	5.8	17.1			5.6			0.1	0.4	32.3
Scrub\Shrub	0.0		0.0	3.6	0.1		328.8					332.5
Tree Canopy	54.7		2.9	1,536.8	62.3						4.7	1,661.3
Tree Canopy Over Impervious Roads	0.0			3.4	3.9							7.3
Tree Canopy Over Impervious Structures	0.0		0.0	0.5	0.7							1.2
Tree Canopy Over Other Impervious	0.1		0.1	11.0	7.0						0.0	18.2
Water	1.9			1.5			1.6					5.0
Grand Total	206.7	1.4	63.5	1,631.1	199.5	31.3	1,748.0	0.1	0.0	0.1	34.0	629,111.7
Version 1	Barren	Roads	Structures	Low Vegetation	Other Impervious	Scrub\Shrub	Tree Canopy	TCI-Roads	TCI-Structures	TCI-Other		Grand Total
Barren			0.2	50.7			4.8					55.7
Emergent Wetlands	20.2		0.6		4.0		0.4					25.3
Low Vegetation	117.3	0.2	52.7		109.0	31.3	1,402.1					1,712.7
Other Impervious Surfaces	2.0	1.1	6.6	11.9			5.9			0.1		27.8
Roads				0.5	0.7		3.3	0.1				4.7
Scrub\Shrub	0.0		0.0	3.6	0.1		328.7					332.4
Structures	0.0			4.6	5.4		0.8		0.0			10.9
Tree Canopy	54.7		2.9	1,540.0	62.1							1,659.6
Tree Canopy Over Other Impervious Surfaces	0.1		0.2	11.5	7.6							19.4
Tree Canopy Over Roads	0.0			3.5	4.0							7.4
Tree Canopy Over Structures	0.0		0.0		0.7		0.5					1.2
Water							1.6					1.6
Grand Total	194.4	1.4	63.1	1,626.4	193.6	31.3	1,748.3	0.1	0.0	0.1		629,033.1

## Delaware

## Land Cover Change: Version 1 vs Version 2

V1	V2	acres	cofips	V1_Name	V2_Name
5	65	176.0316099	suss_10005	Low Vegetation	Barren to Low Vegetation
1	16	144.1352861	suss_10005	Water	Water to Barren
5	56	84.45103946	suss_10005	Low Vegetation	Low Vegetation to Barren
6	65	82.44107116	suss_10005	Barren	Barren to Low Vegetation
3	35	80.73850396	suss_10005	Tree Canopy	Tree Canopy to Low Vegetation

## Maryland

V1	V2	acres	cofips	V1_Name	V2_Name
5	65	71.53401551	mont_24031	Low Vegetation	Barren to Low Vegetation
5	51	70.04346612	talb_24041	Low Vegetation	Low Vegetation to Water
3	35	49.62798042	alle_24001	Tree Canopy	Tree Canopy to Low Vegetation
5	56	45.86997724	talb_24041	Low Vegetation	Low Vegetation to Barren
6	65	36.63188224	alle_24001	Barren	Barren to Low Vegetation

## Pennsylvania

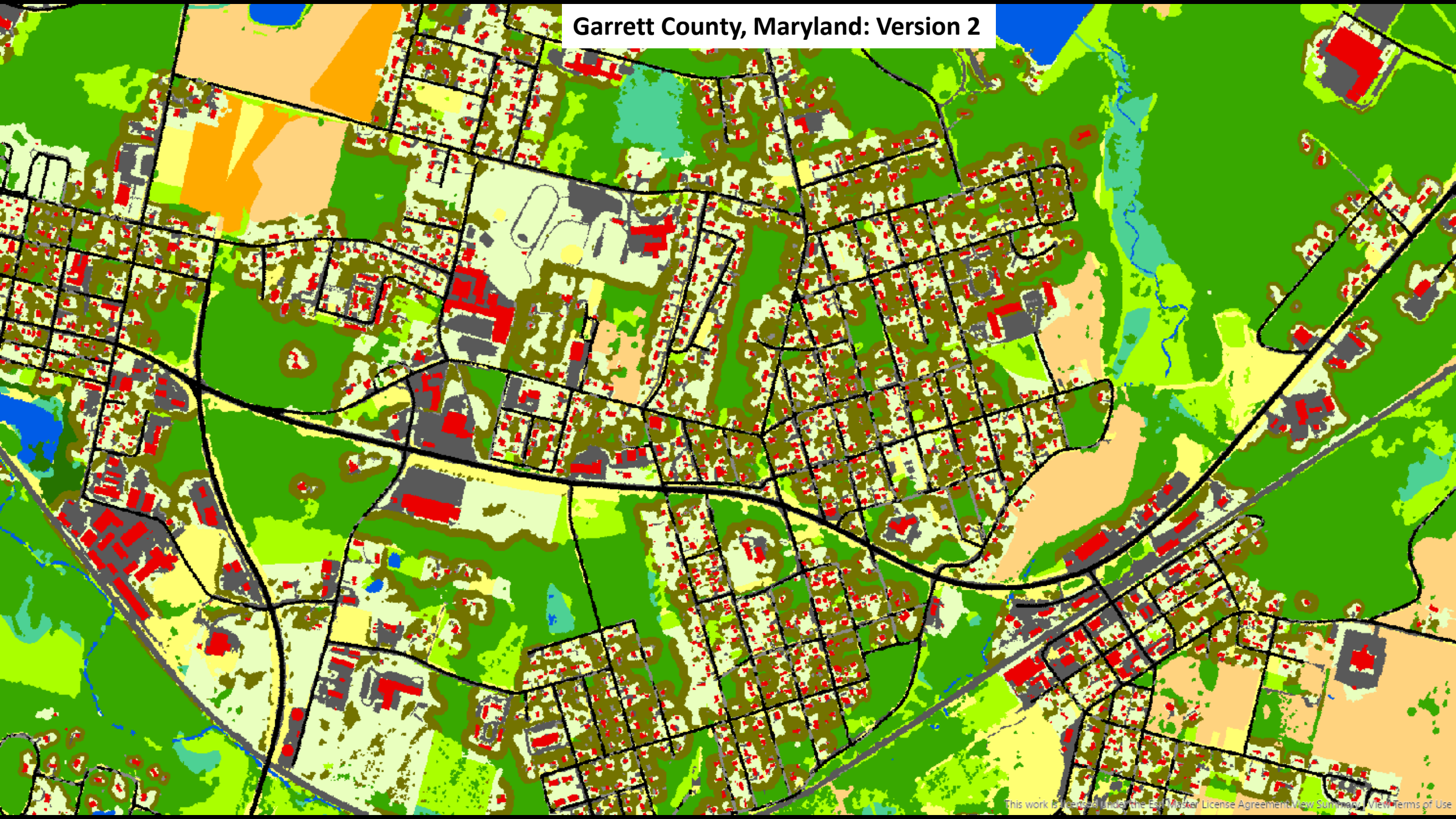
V1	V2	acres	cofips	V1_Name	V2_Name
5	65	330.3822992	some_42111	Low Vegetation	Barren to Low Vegetation
3	35	187.6019007	some_42111	Tree Canopy	Tree Canopy to Low Vegetation
6	65	129.0583	some_42111	Barren	Barren to Low Vegetation
5	56	84.8377619	some_42111	Low Vegetation	Low Vegetation to Barren
53	5	71.77865144	clea_42033	Low Vegetation to Tree Canopy	Low Vegetation

## Virginia

V1	V2	acres	cofips	V1_Name	V2_Name
65	2	515.7303371	isle_51093	Barren to Low Vegetation	Emergent Wetlands
65	2	83.56639641	glou_51073	Barren to Low Vegetation	Emergent Wetlands
3	35	71.32644564	king_51099	Tree Canopy	Tree Canopy to Low Vegetation
6	65	69.62214869	isle_51093	Barren	Barren to Low Vegetation
3	35	60.1369467	isle_51093	Tree Canopy	Tree Canopy to Low Vegetation



# Garrett County, Maryland: Version 2



## Priorities for 2021/22 Land Use Data

1. Incorporate hyper-res hydrography
  - Improve pond classification
2. Map animal operations
3. Develop regionally-consistent commercial, industrial, and residential parcel layer for mapping turf grass
4. Improve accuracy of cropland, pasture, natural succession, and suspended succession using Digital Surface Models and seasonal satellite imagery.
5. Improve mapping of transitional-barren and timber harvests using multi-temporal imagery

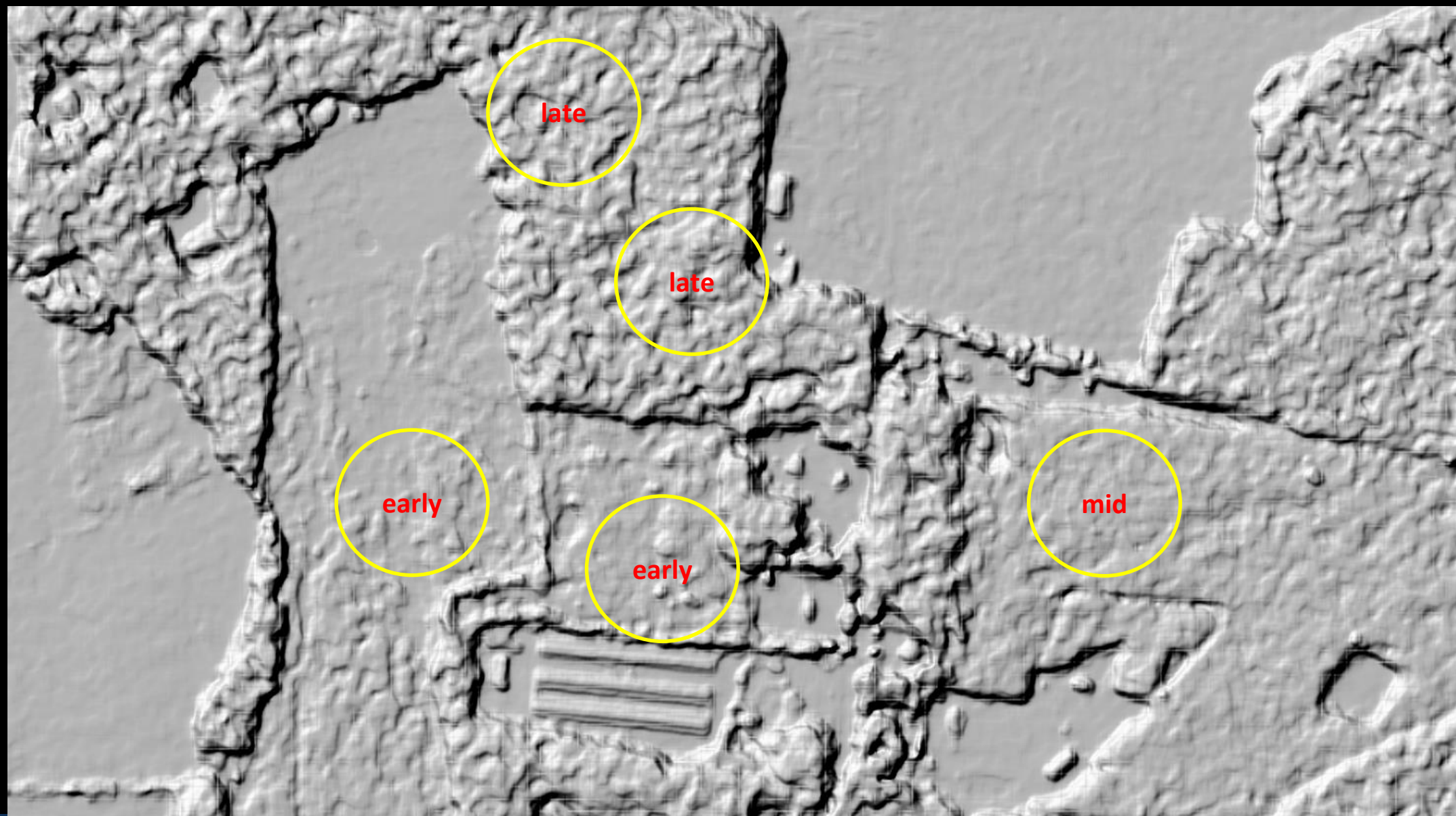


## Aerial Imagery (Google)





## Digital Surface Model (NAIP)







science for a changing world