

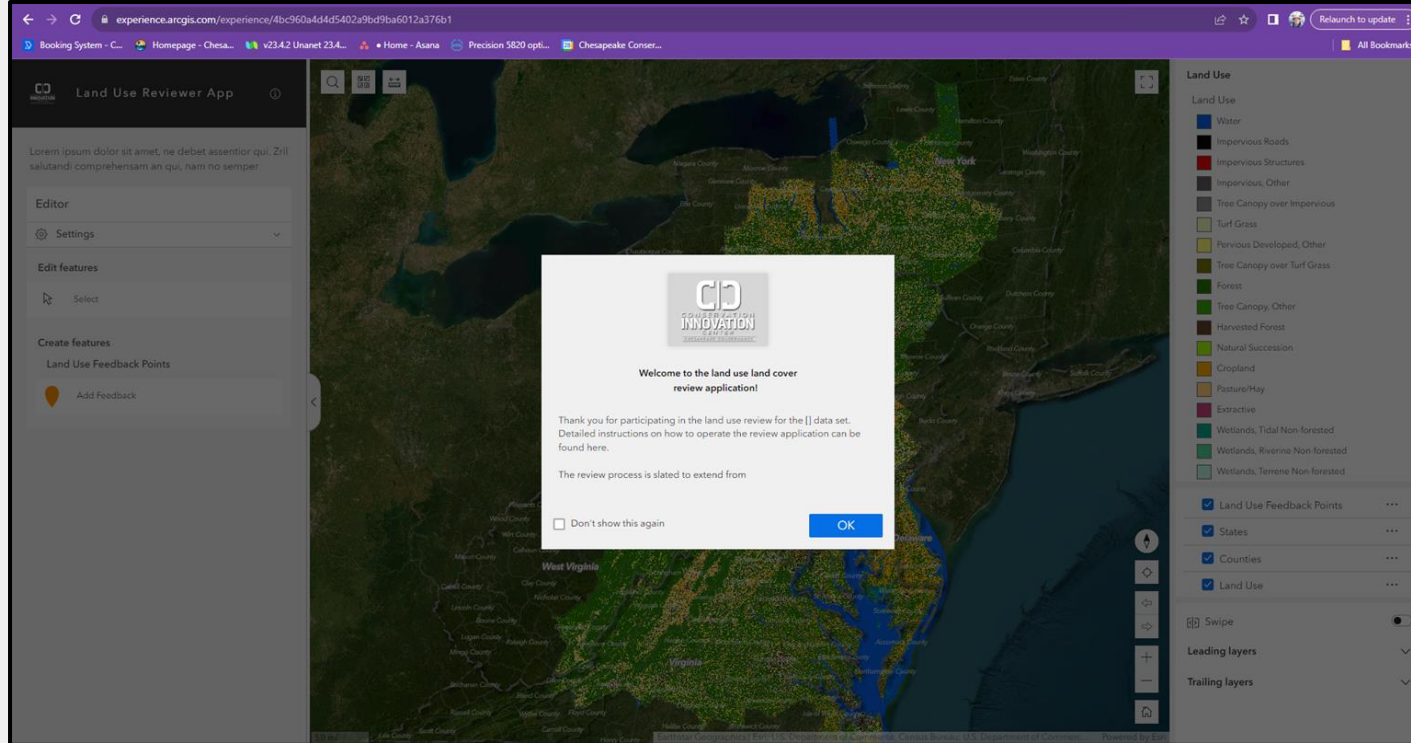


Local Review of the 2024 Edition Chesapeake Bay Land Use Land Cover Data

Steven Guinn, Chesapeake Conservancy

Joint Land Use and Forestry Workgroup | 1 December 2023

Land Use/Land Cover (LULC) 2024 Edition Review App



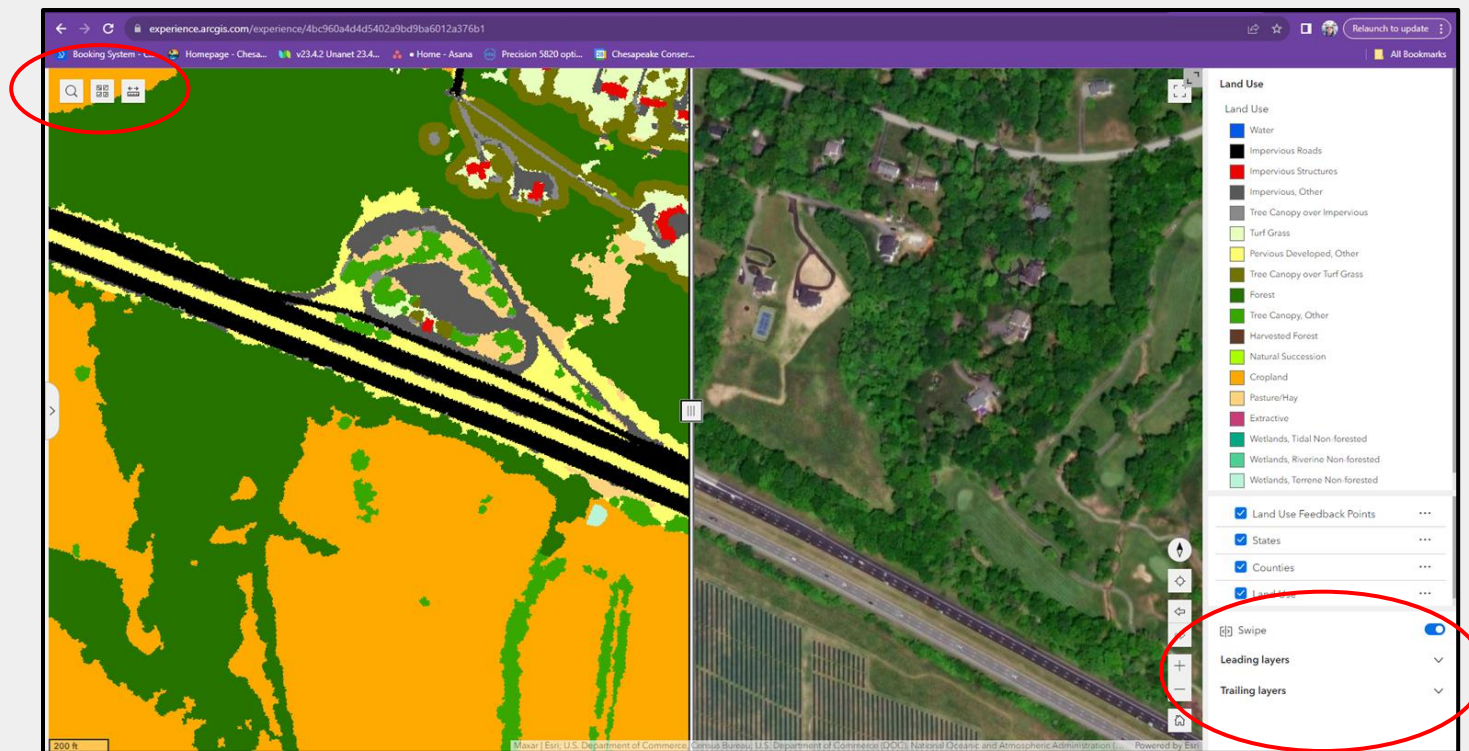
Overview of LULC Review App

- Web app hosted by the Chesapeake Conservancy and powered by ESRI Experience Builder
- Allows reviewers to directly compare the LULC data with the raw imagery used in production for QA
- Ancillary layers of state and county boundaries for orientation
- The app is persistent in that it permanently records and displays previously placed Land Use Feedback Points from all reviewers
- Robust search feature allows for lookup by address or place name
- Existing review points can be edited/deleted if needed

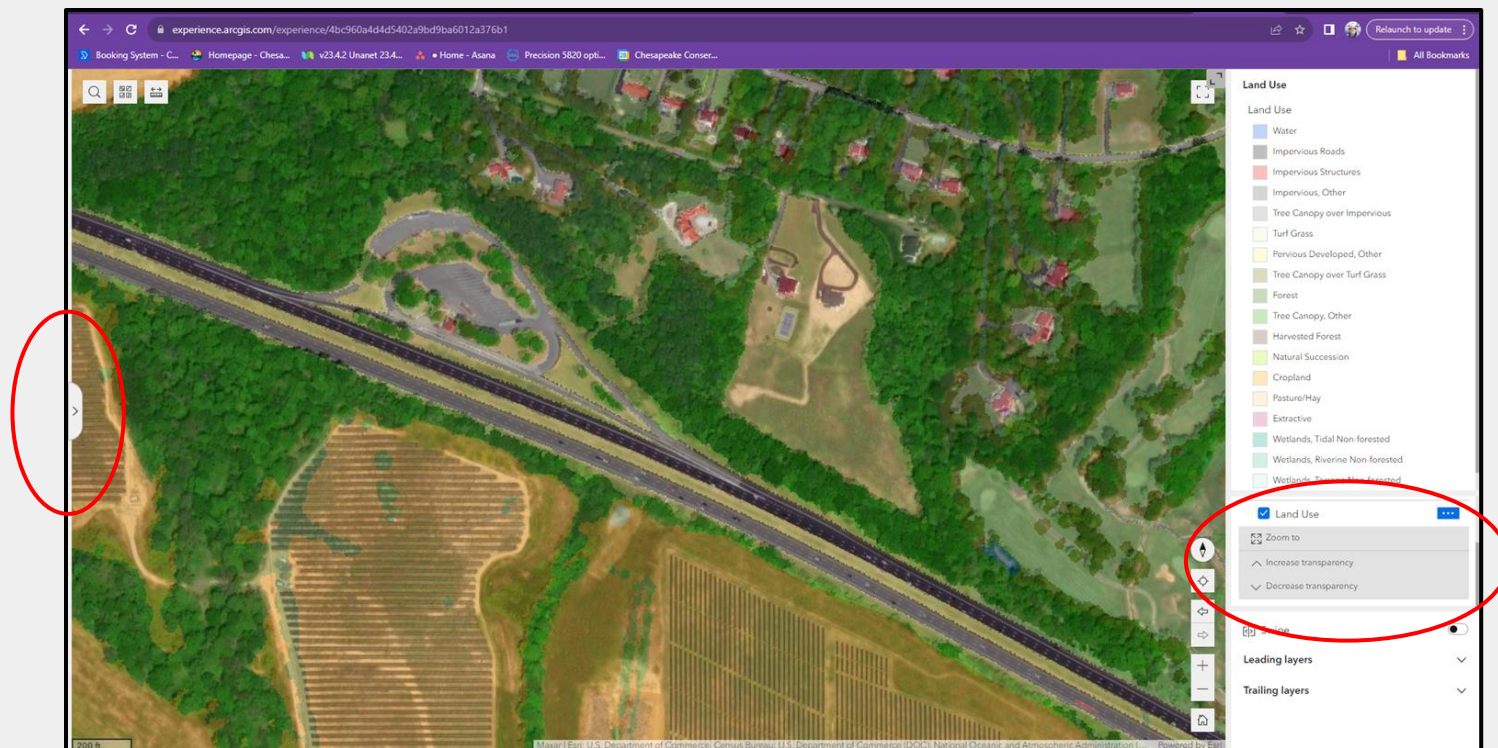
Setting up the workflow

- Before placing review points, experiment with different visualization options to find what works best for individual reviewers
- Changing the basemap options allows for more flexibility in what level and types of cartographic elements are visible
- Use the search feature to locate named places and addresses
- The ruler tool allows you to extract the size of features for additional context

Visualization Using Swipe Function



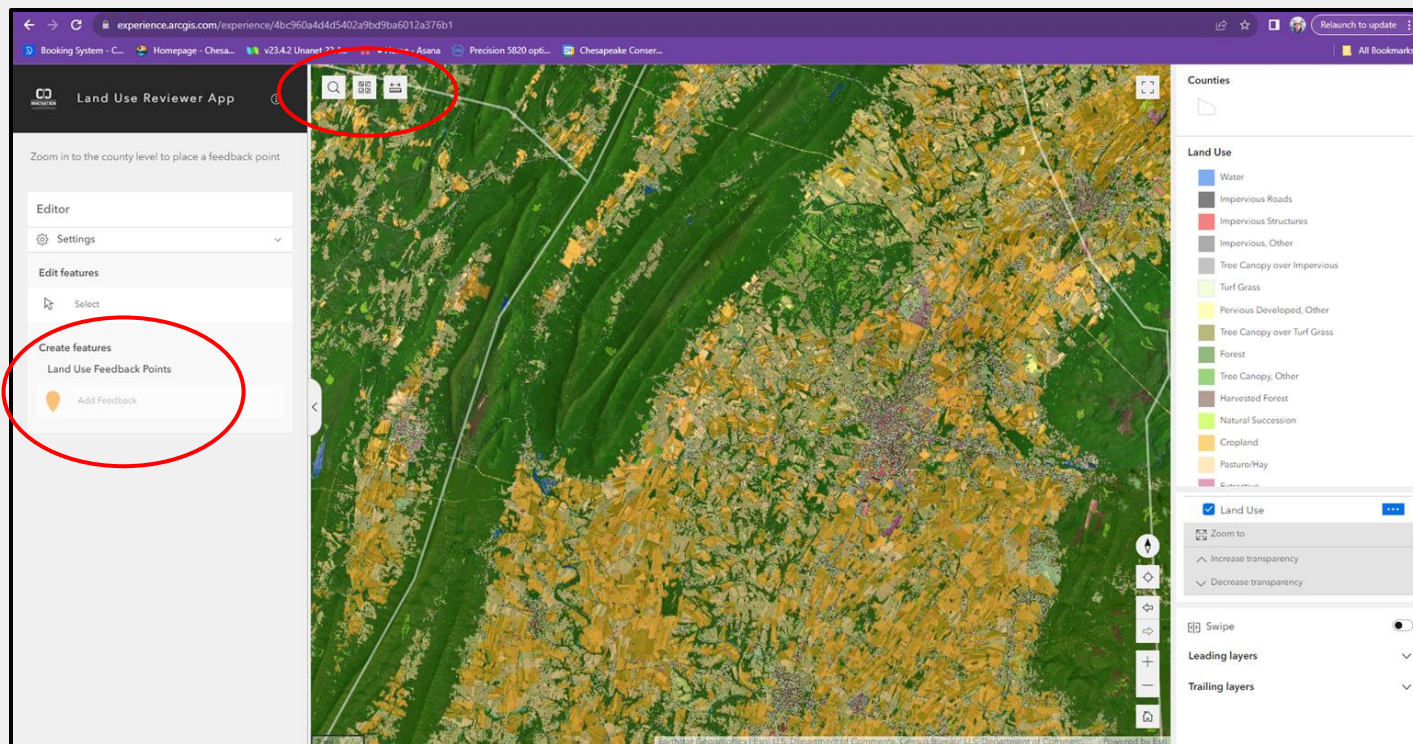
Visualization Using Transparency



Creating review points

- Locate the region of interest by panning the map or using the search function
- If not visible, expand the editing tab on the left side of the screen
- If the “Add feedback” is grayed out, zoom in until it becomes active
- Once in edit mode, place point on feature that is incorrectly mapped
- In the edit pane fill out name and reviewer email
- Using the “Land use as mapped” field, select the correct land use class
- Using the “Land use correction” field, select the land use class that the reviewer thinks is more appropriate
- Optionally, leave a comment if the reviewer needs to provide more input

Creating review points



Creating review points

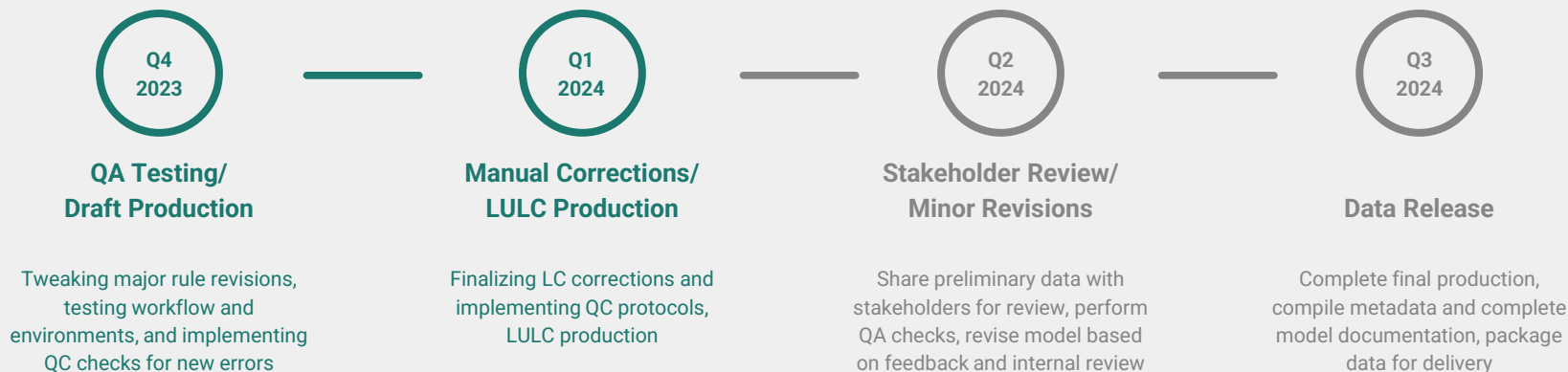


Reviewer expectations

- All Contact information is completed correctly
 - Use employer/organizational email account
- Review points are accurately placed
 - Increase zoom as much as practical before placing point
 - Avoid placing points too close to the edge of a feature
 - Perform basic QA by reviewing and editing/deleting inaccurate review points
- Reviews are completed within the assigned time frame for that County
- Reach out to the Chesapeake Conservancy CIC if experiencing issues with the web application ASAP for timely resolution

1-meter Land Use/Land Cover Data Project

Overall timeline - 2024 edition



Steven Guinn (he/him)

Geospatial Modeler

Chesapeake Conservancy

sguinn@chesapeakeconservancy.org

Sarah McDonald (she/her)

Geographer

U. S. Geological Survey

smcdonald@chesapeakebay.net



Questions? Feedback?