

Update on Schedule for producing new LC/LU data

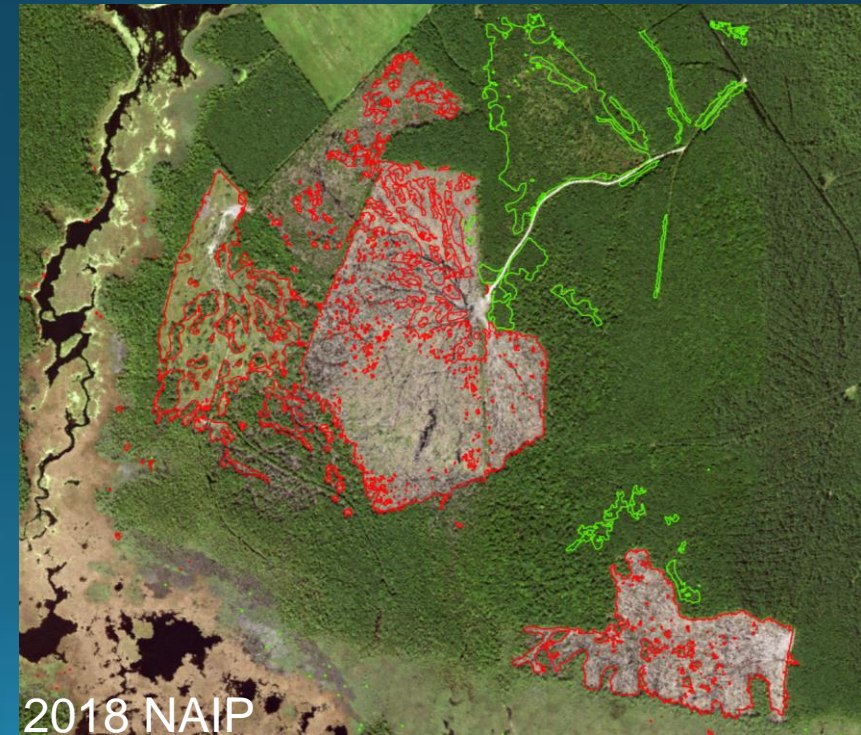
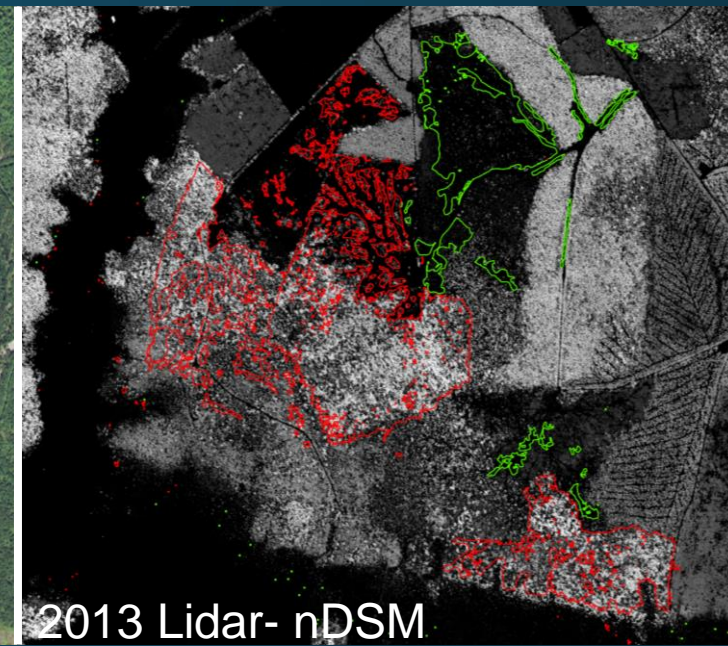
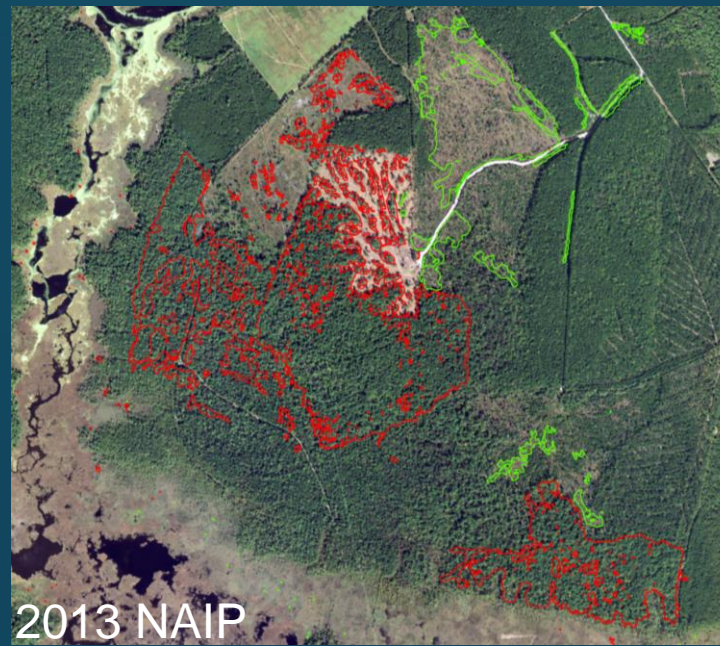
February 5, 2020 : LUWG

Rachel Soobitsky

rsoobitsky@chesapeakeconservancy.org

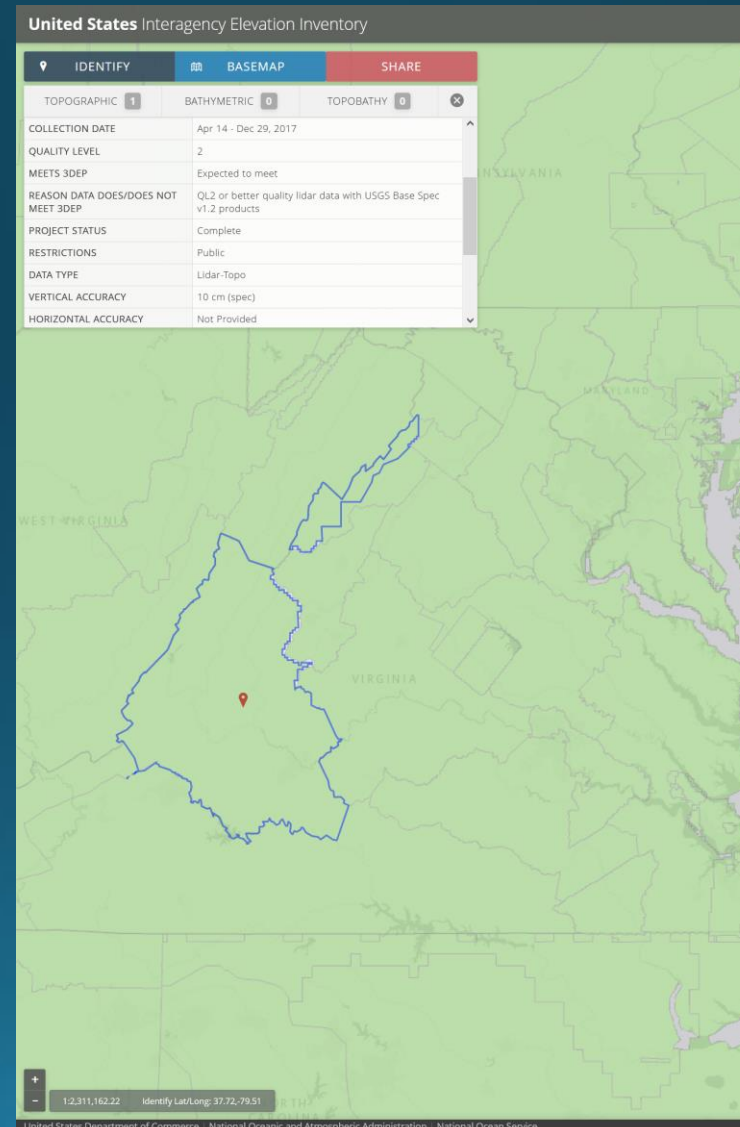
Tree Canopy Change Progress

- 10 counties in MD were prioritized for MD Senate Bill:
 - Anne Arundel
 - Calvert
 - Charles
 - Dorchester
 - Montgomery
 - Prince George's
 - Somerset
 - St. Mary's
 - Wicomico
 - Worcester
- UVM used best combination of NAIP and LiDAR quality to create change products



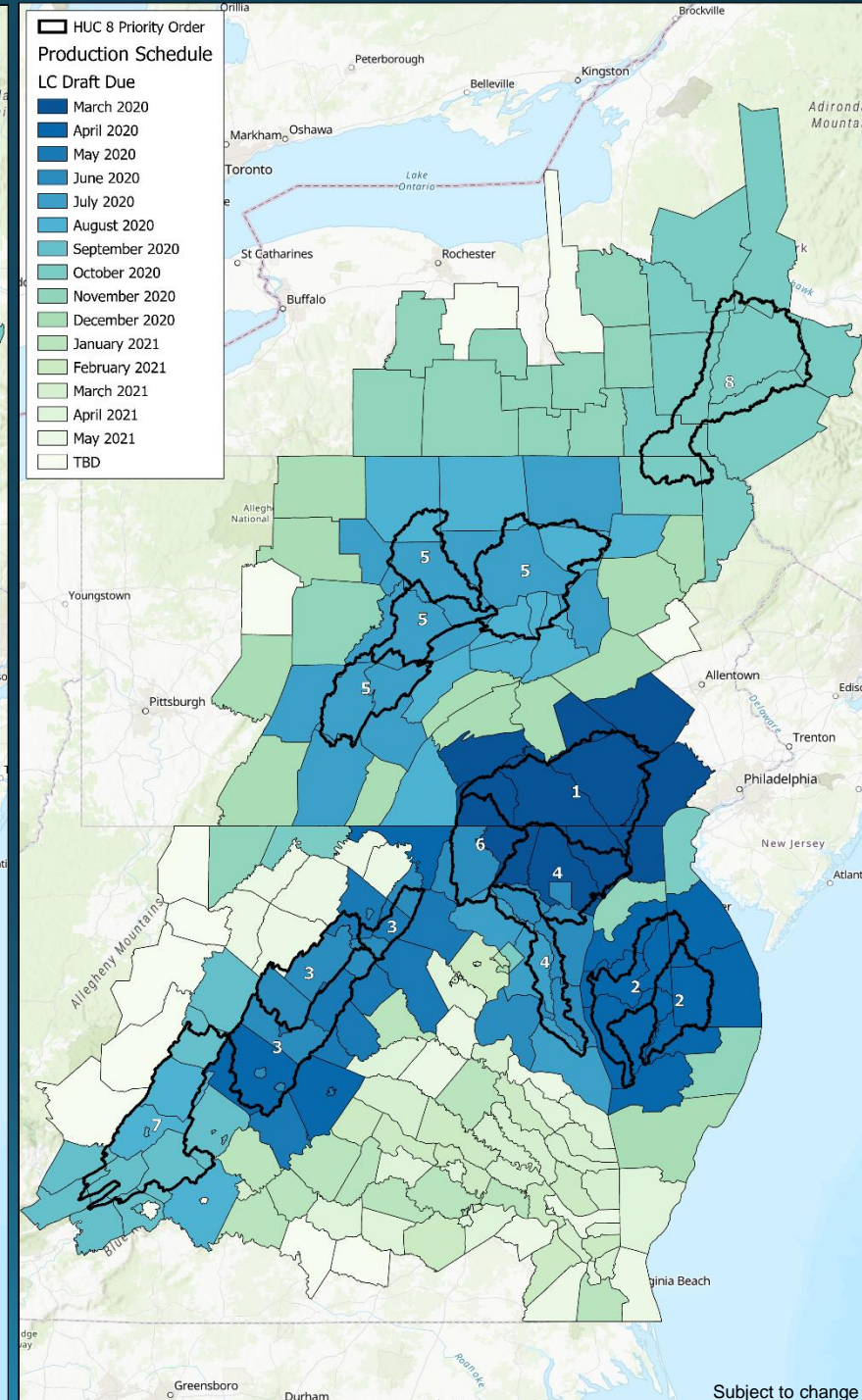
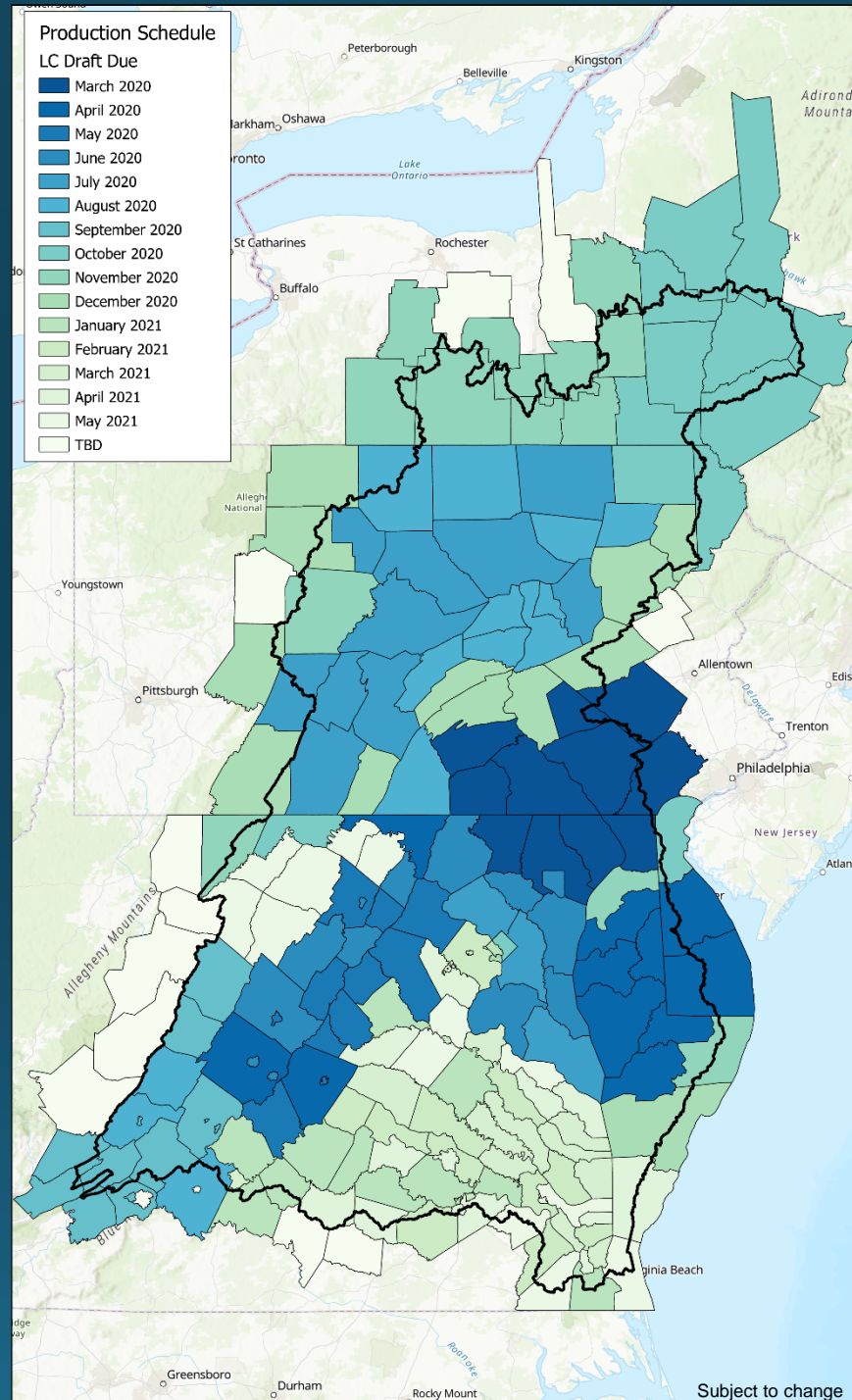
New LiDAR data

- Received 2017 QL2 LiDAR for Southwest Virginia:
 - Shenandoah HUC 8
 - Upper James HUC8



Land Cover Production Schedule* & Priority Areas

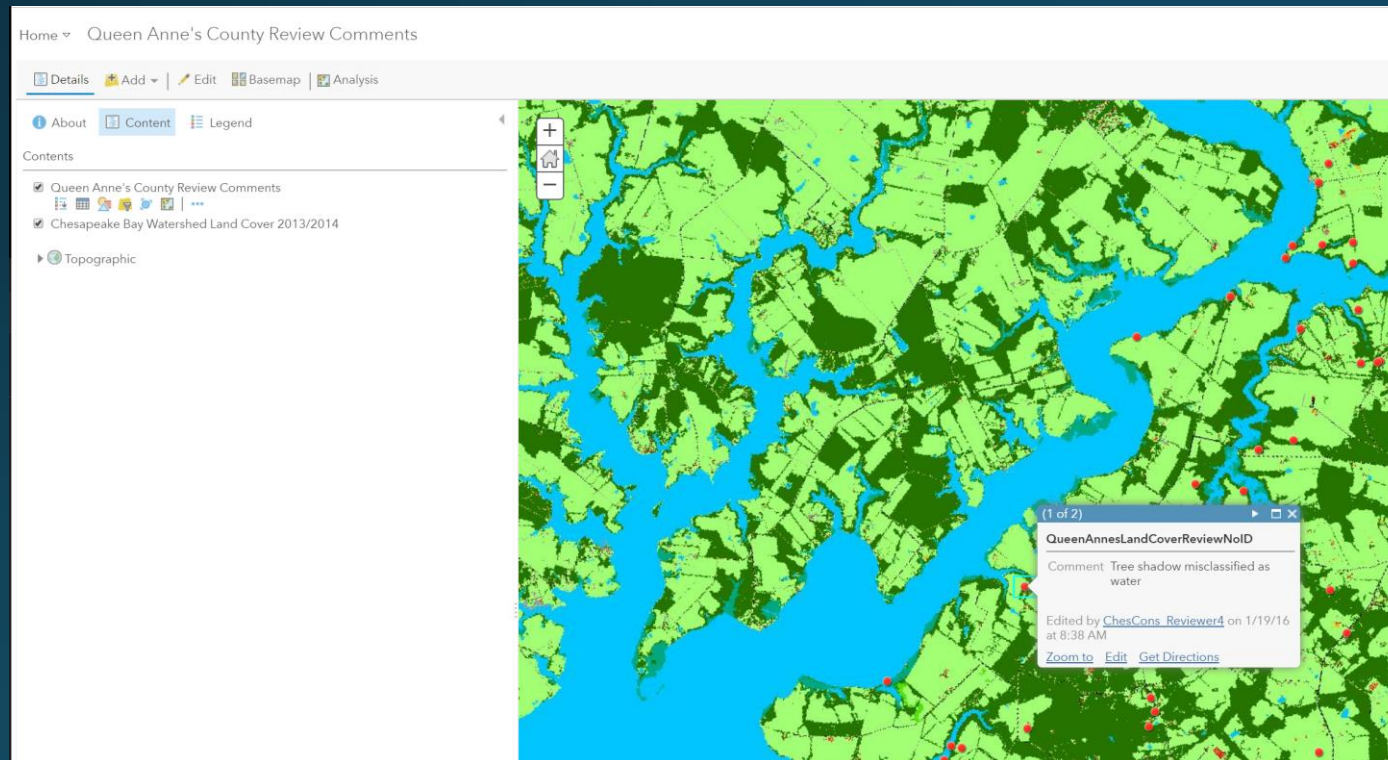
- Webviewer with this information coming soon!
- Land Use will follow the geographical schedule but behind a few months



*Subject to change

Land Cover Review Process

- Provide counties ~1 month ahead of data review:
 - Timeframe to expect the draft Land Cover data to review
 - How long they have to comment (~2-4 weeks)
- Provide counties with draft Land Cover data:
 - Training video on how to review and comment on data
 - What datasets were used to create data product
 - What type of feedback we are looking for



Lower Susquehanna HUC8 counties to review data first:

- Baltimore County, MD
- Carroll County, MD
- Cecil County, MD
- Harford County, MD
- Adams County, PA
- Berks County, PA
- Chester County, PA
- Cumberland County, PA
- Lancaster County, PA
- Lebanon County, PA
- York County, PA

March 2020

Land Use Review Process

- LUWG will lead review of rule-based land use
 - Will provide existing rule and proposed change, with an example of data outputs
 - Will need approval from LUWG on each rule change for the rule to be implemented

Questions?

rsoobitsky@chesapeakeconservancy.org