

# Objective 1: Land Use Viewer

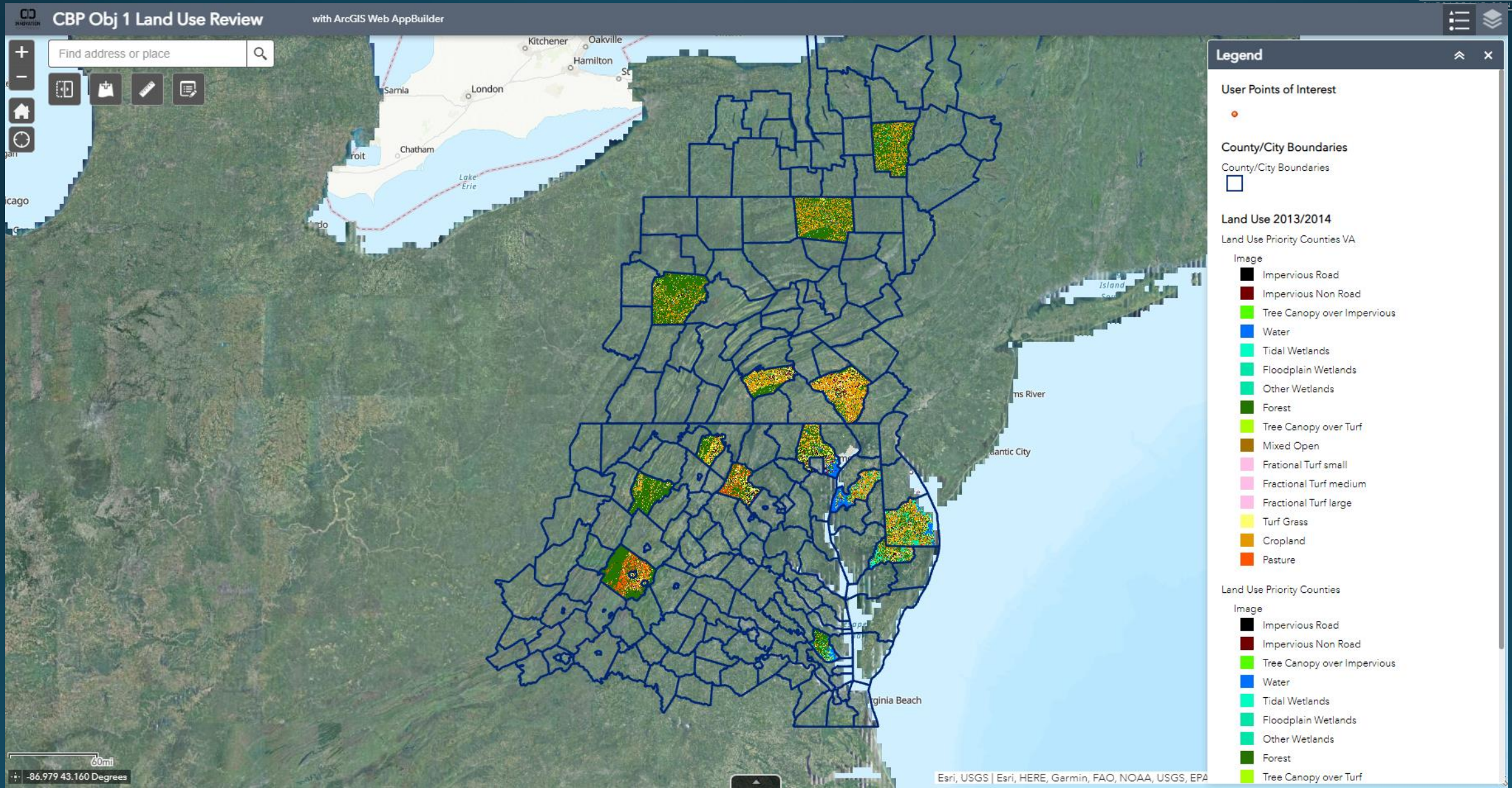
February 3, 2021: LUWG

Rachel Soobitsky

[rsoobitsky@chesapeakeconservancy.org](mailto:rsoobitsky@chesapeakeconservancy.org)

# Land Use Viewer

When all 14 counties 2017/2018 draft land use is complete, will send out the web viewer link and log-in information.







### Legend

User Points of Interest

County/City Boundaries

County/City Boundaries

Land Use 2013/2014

Land Use Priority Counties VA

Image

- Impervious Road
- Impervious Non Road
- Tree Canopy over Impervious
- Water
- Tidal Wetlands
- Floodplain Wetlands
- Other Wetlands
- Forest
- Tree Canopy over Turf
- Mixed Open
- Fractional Turf small
- Fractional Turf medium
- Fractional Turf large
- Turf Grass
- Cropland
- Pasture

Land Use Priority Counties

Image

- Impervious Road
- Impervious Non Road
- Tree Canopy over Impervious
- Water
- Tidal Wetlands
- Floodplain Wetlands
- Other Wetlands
- Forest
- Tree Canopy over Turf



Find address or place

**Add Data**

Search URL File

My Organization Search...

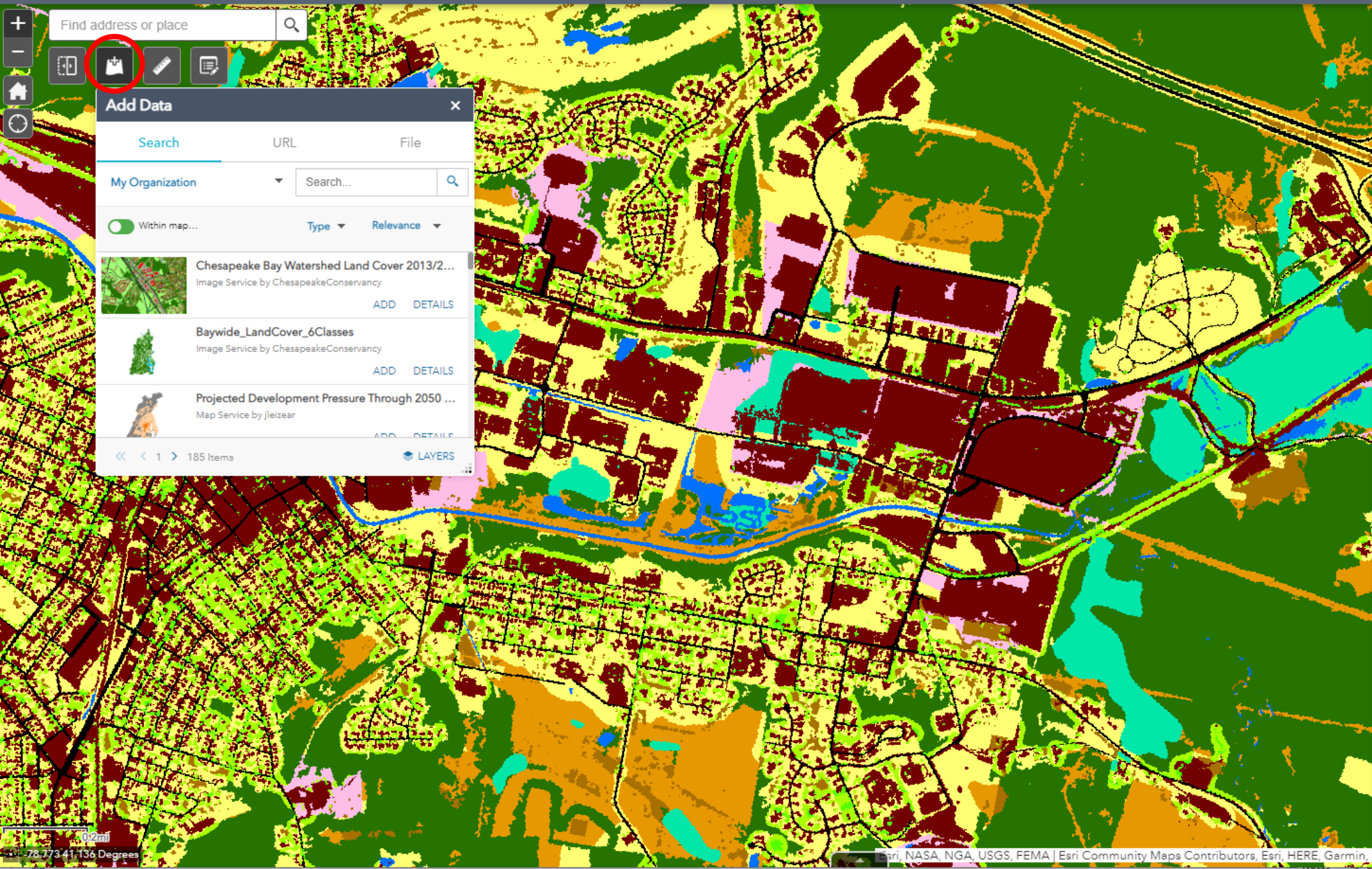
Within map... Type Relevance

Chesapeake Bay Watershed Land Cover 2013/2...  
Image Service by ChesapeakeConservancy  
ADD DETAILS

Baywide\_LandCover\_6Classes  
Image Service by ChesapeakeConservancy  
ADD DETAILS

Projected Development Pressure Through 2050 ...  
Map Service by jleizear  
ADD DETAILS

<< < 1 > 185 Items LAYERS



**Legend**

User Points of Interest

County/City Boundaries

County/City Boundaries

**Land Use 2013/2014**

Land Use Priority Counties VA

Image

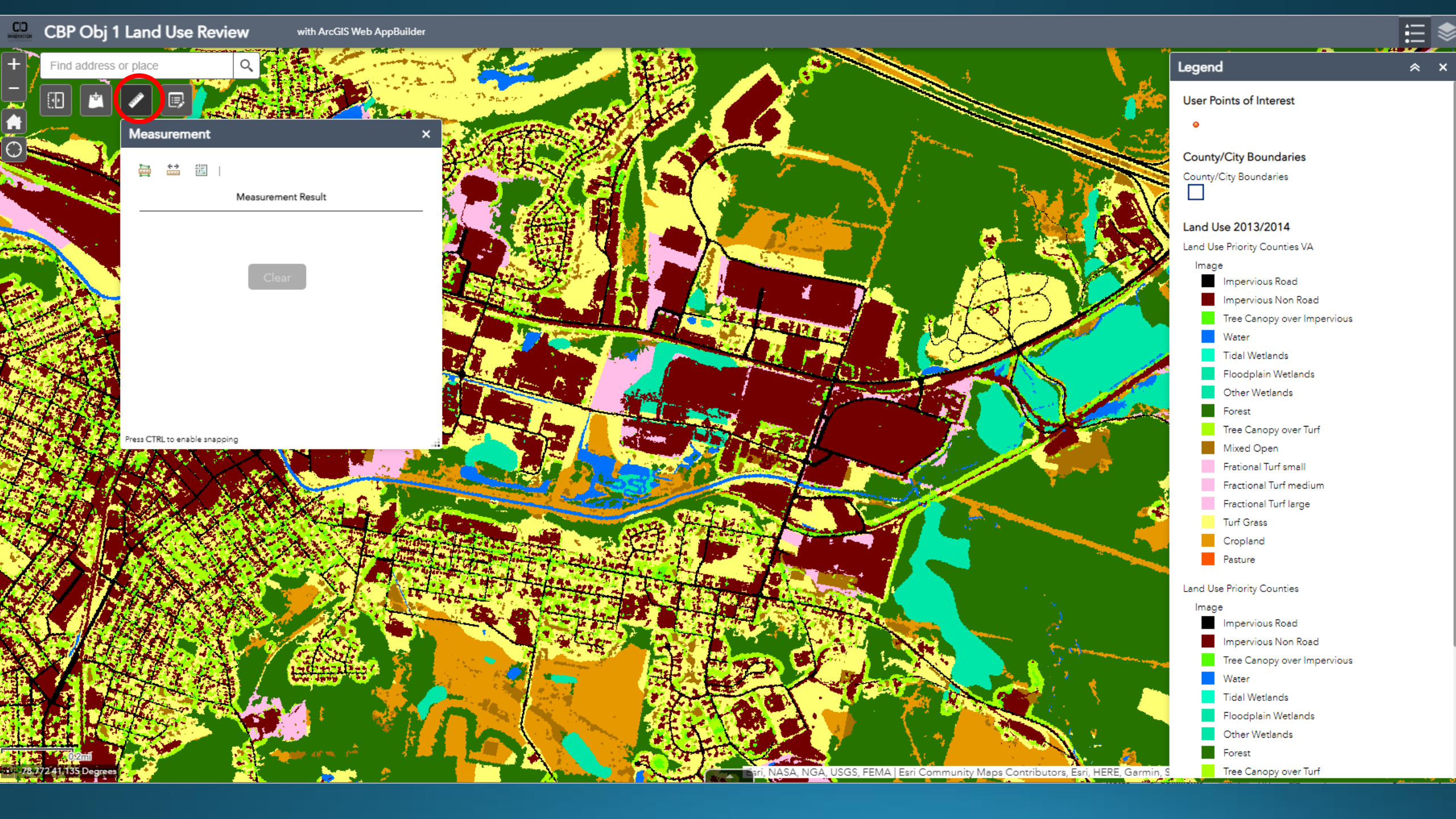
- Impervious Road
- Impervious Non Road
- Tree Canopy over Impervious
- Water
- Tidal Wetlands
- Floodplain Wetlands
- Other Wetlands
- Forest
- Tree Canopy over Turf
- Mixed Open
- Fractional Turf small
- Fractional Turf medium
- Fractional Turf large
- Turf Grass
- Cropland
- Pasture

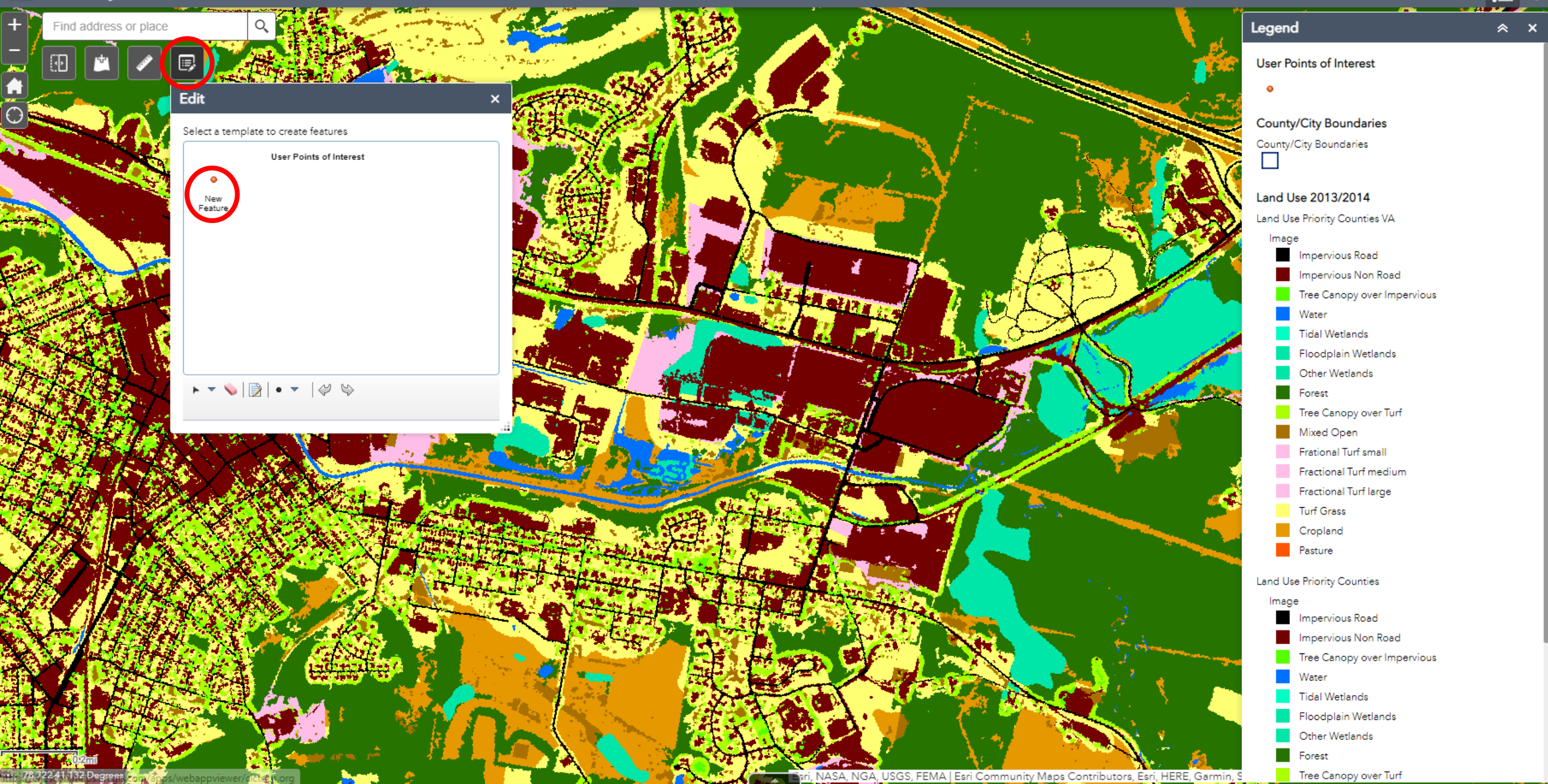
Land Use Priority Counties

Image

- Impervious Road
- Impervious Non Road
- Tree Canopy over Impervious
- Water
- Tidal Wetlands
- Floodplain Wetlands
- Other Wetlands
- Forest
- Tree Canopy over Turf







Find address or place

**Edit**

Select a template to create features

User Points of Interest

- New Feature

**Legend**

User Points of Interest

- User Points of Interest

County/City Boundaries

- County/City Boundaries

Land Use 2013/2014

Land Use Priority Counties VA

Image

- Impervious Road
- Impervious Non Road
- Tree Canopy over Impervious
- Water
- Tidal Wetlands
- Floodplain Wetlands
- Other Wetlands
- Forest
- Tree Canopy over Turf
- Mixed Open
- Fractional Turf small
- Fractional Turf medium
- Fractional Turf large
- Turf Grass
- Cropland
- Pasture

Land Use Priority Counties

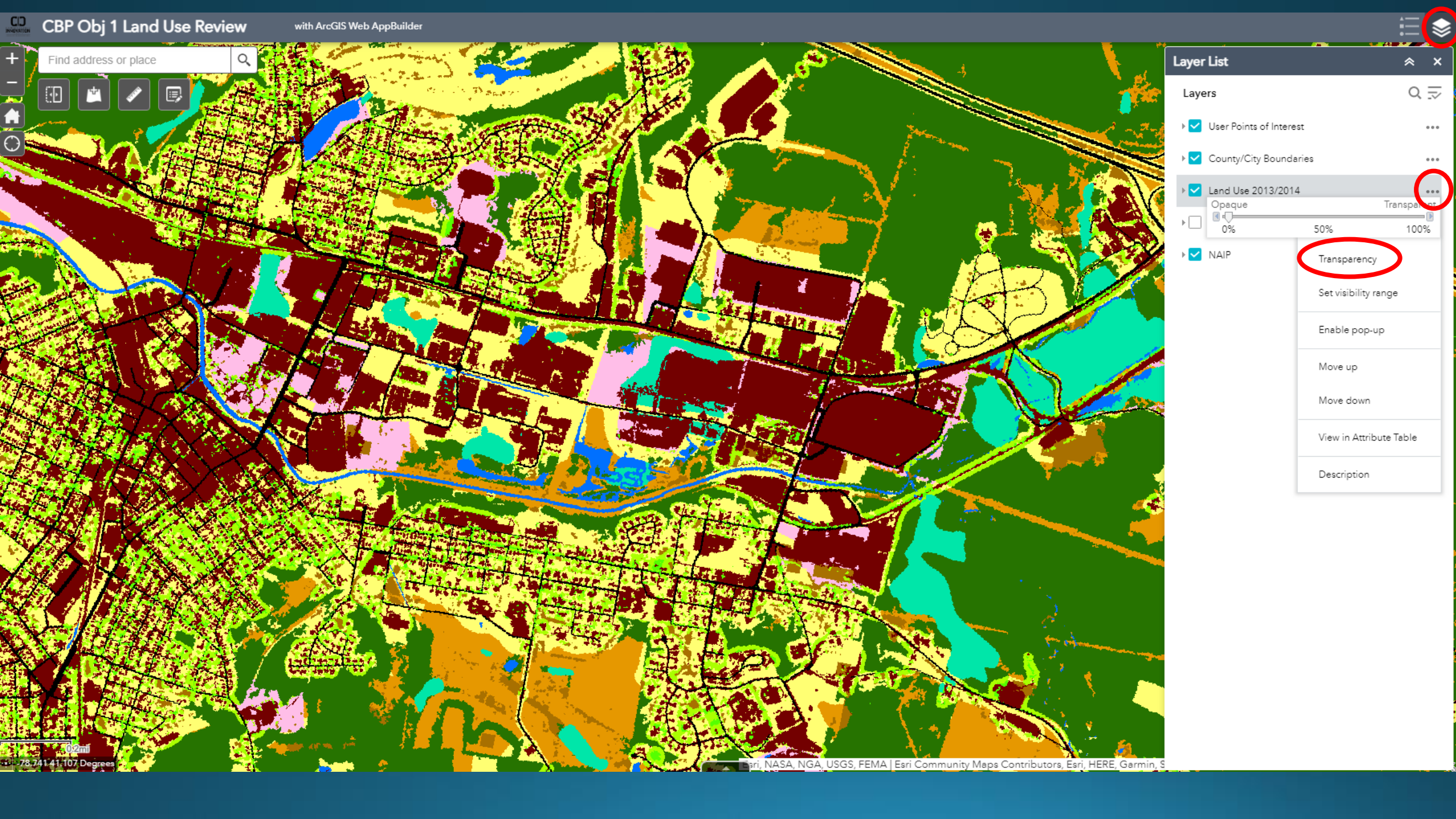
Image

- Impervious Road
- Impervious Non Road
- Tree Canopy over Impervious
- Water
- Tidal Wetlands
- Floodplain Wetlands
- Other Wetlands
- Forest
- Tree Canopy over Turf













Layer List

Layers

User Points of Interest

...

County/City Boundaries

...

Land Use 2013/2014

...

NAIP

...

0%

50%

100%

Transparency

Set visibility range

Enable pop-up

Move up

Move down

View in Attribute Table

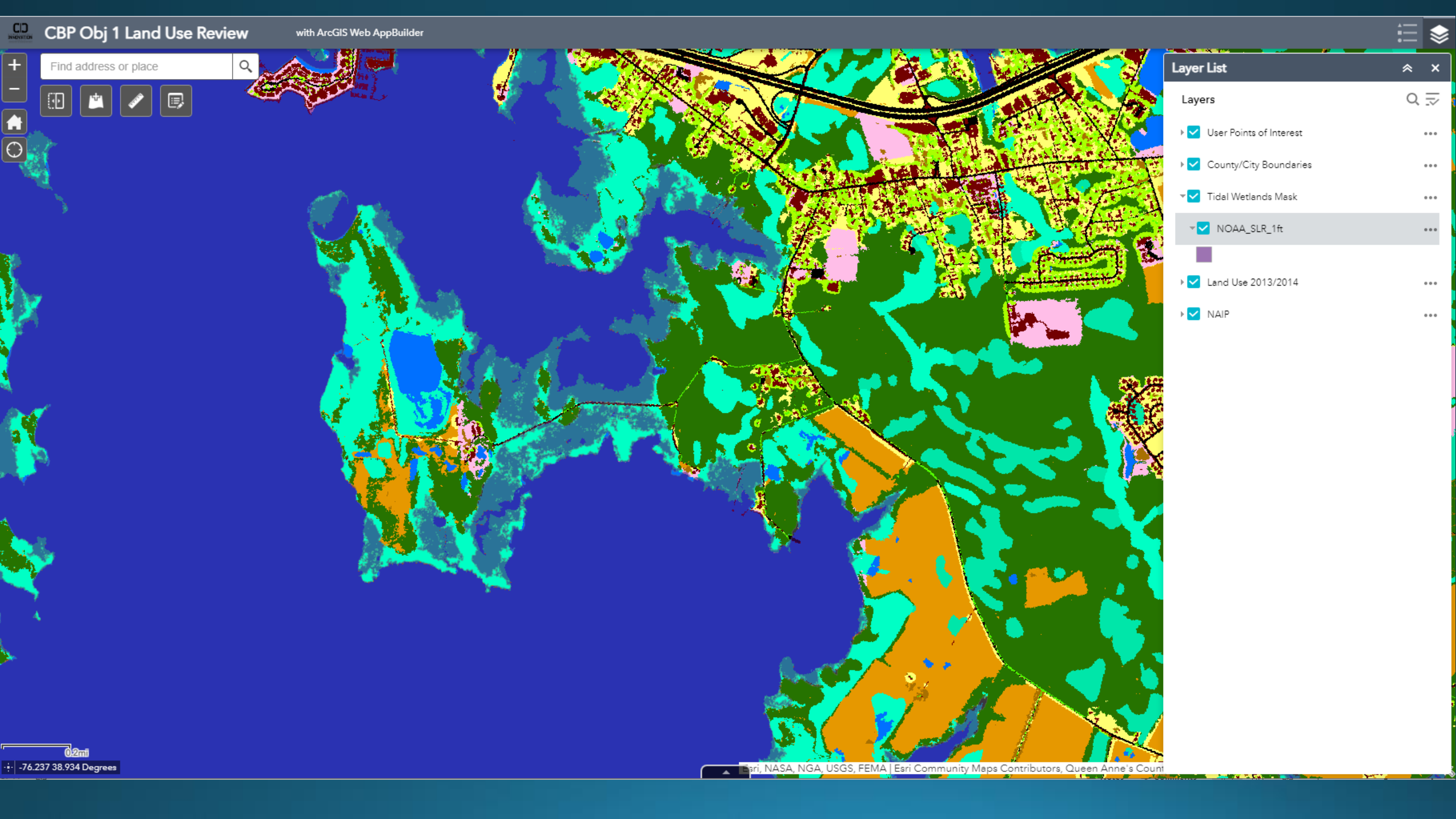
Description

0.2mi

-78.747 41.106 Degrees

Esri, NASA, NGA, USGS, FEMA | Esri Community Maps Contributors, Esri, HERE, Garmin, S





Find address or place

Layer List

Layers

- ☒ User Points of Interest
- ☒ County/City Boundaries
- ☒ Tidal Wetlands Mask
- ☒ NOAA\_SLR\_1ft
- ☒ Land Use 2013/2014
- ☒ NAIP

0.2mi

-76.237 38.934 Degrees

Esri, NASA, NGA, USGS, FEMA | Esri Community Maps Contributors, Queen Anne's County



# Comments

- LUWG:
  - Add points to the web application
  - Or, summarize comments and email to Peter Claggett or Rachel Soobitsky
- Comment on specific systematic class issues that could be fixed by rule tweaking
- Don't comment on an error that looks like a misclassification of the imagery. This means it is an issue tracing back to the Land Cover, and comments such as that are made in the Land Cover Review application
  - For example, if the Land Use is showing Tree Canopy over Turf, where there appears to be no Tree Canopy in the NAIP imagery. This is a misclassification stemming from the Land Cover (which is still in draft form)



# 2013 Land Use Revision

- Draft options:
  - Option 1) Take the 2013/2014 – 2017/2018 Land Cover change layer and compare with 2017/2018 Land Use layer to back-track any changes to 2013/2014
  - Option 2) Run Land Use model on 2013/2014 Land Cover with ancillary datasets that match the 2013/2014 vintage



# Questions?

[rsoobitsky@chesapeakeconservancy.org](mailto:rsoobitsky@chesapeakeconservancy.org)