

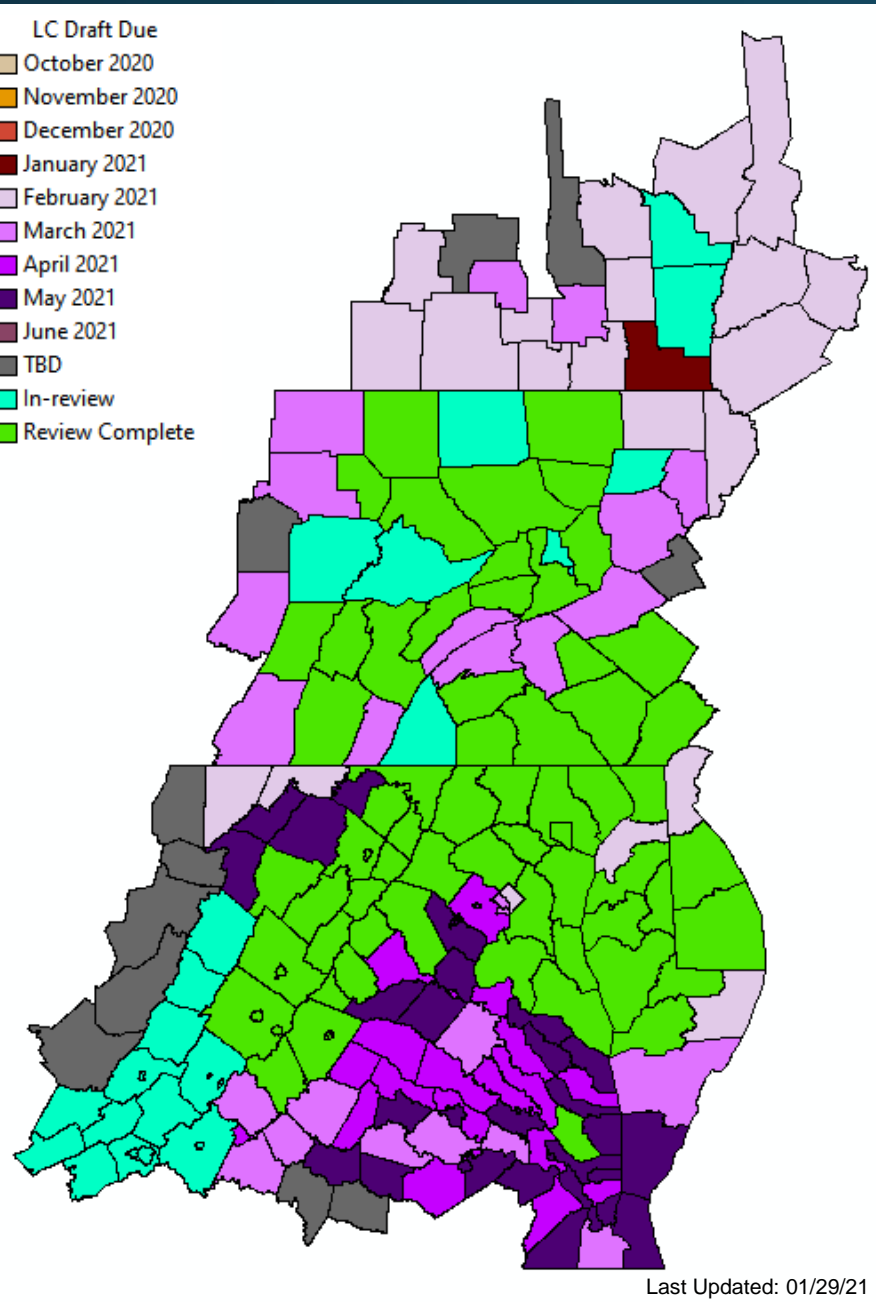
Objective 1 Land Cover Schedule Update

February 3, 2021: LUWG

Rachel Soobitsky

rsoobitsky@chesapeakeconservancy.org

Land Cover Production Schedule



- Review extended due to COVID-19:

- Baltimore City, MD
- Clearfield, PA

- Review-time passed

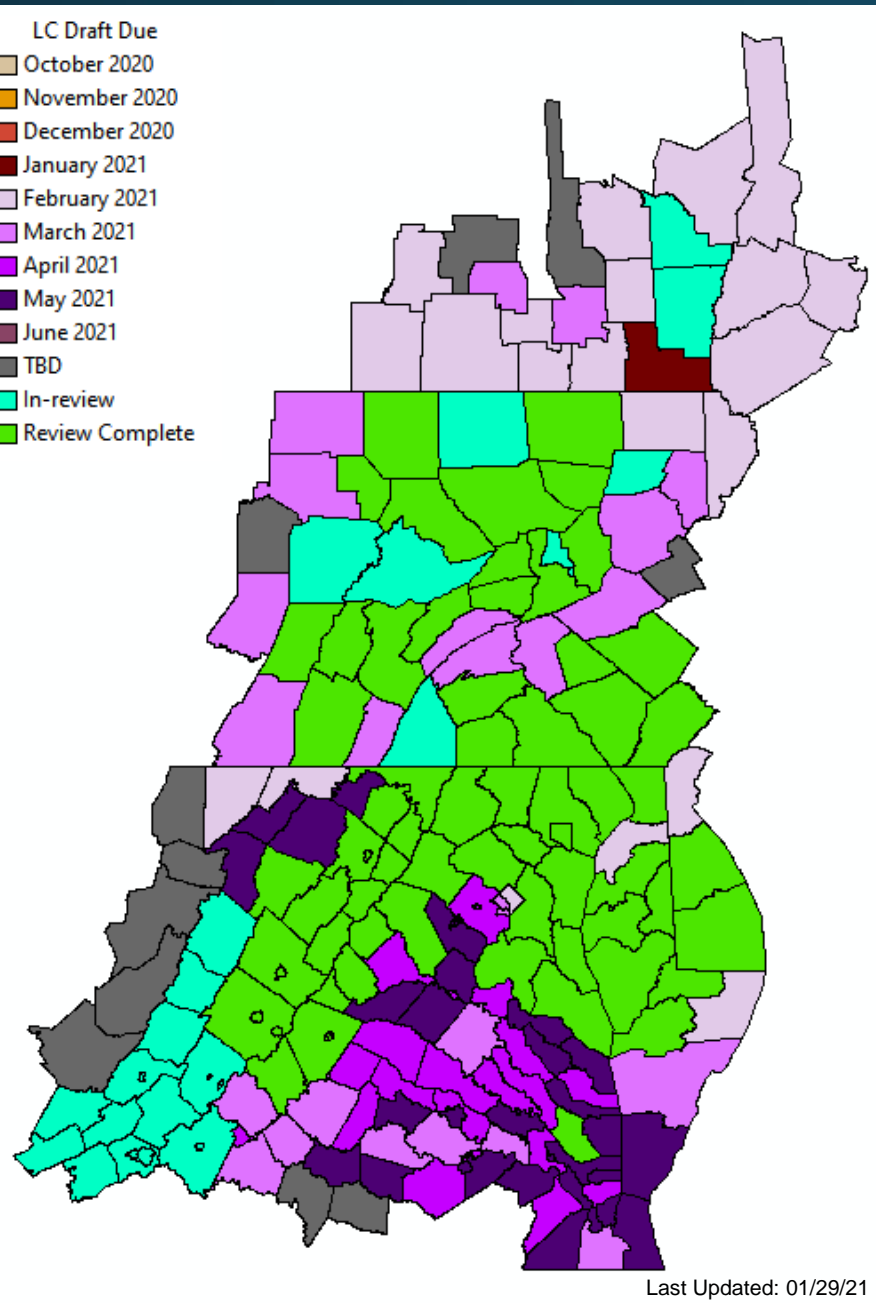
(feedback from county in green):

- Baltimore County, MD
- Cecil County, MD
- Queen Anne's, MD
- Talbot, MD
- Somerset, MD
- Wicomico, MD
- Dorchester, MD
- Harford, MD
- Caroline, MD
- Washington, MD
- Carroll County, MD
- Adams County, PA
- Chester County, PA
- Cumberland County, PA
- Lancaster, PA
- Kent, DE
- Sussex, DE
- Page, VA
- Waynesboro, VA
- Loudon, VA
- Fauquier, VA

- Anne Arundel, MD
- Charlottesville, VA
- Staunton, VA
- Greene, VA
- Frederick, VA
- Albemarle, VA
- Clarke, VA
- Nelson, VA
- Warren, VA
- Augusta, VA
- Winchester, VA
- Rappahannock, VA
- Madison, VA
- Jefferson, WV
- Rockingham, VA
- Harrisonburg, VA
- Shenandoah, VA
- Calvert, MD
- Charles, MD
- Frederick, MD
- Howard, MD
- St. Mary's, MD
- Montgomery, MD

- Prince George's, MD
- York, PA
- Bedford, PA
- Blair, PA
- Cambria, PA
- Clinton, PA
- Columbia, PA
- Mifflin, PA
- Montour, PA
- Berks, PA
- Lebanon, PA
- Cameron, PA
- Centre, PA
- Bradford, PA
- Huntingdon, PA
- Lycoming, PA
- Northumberland, PA
- Cambria, PA
- Snyder, PA
- Potter, PA
- Hardy, WV
- Berkeley, WV
- Gloucester, VA

Land Cover Production Schedule



Localities Currently In-Review:

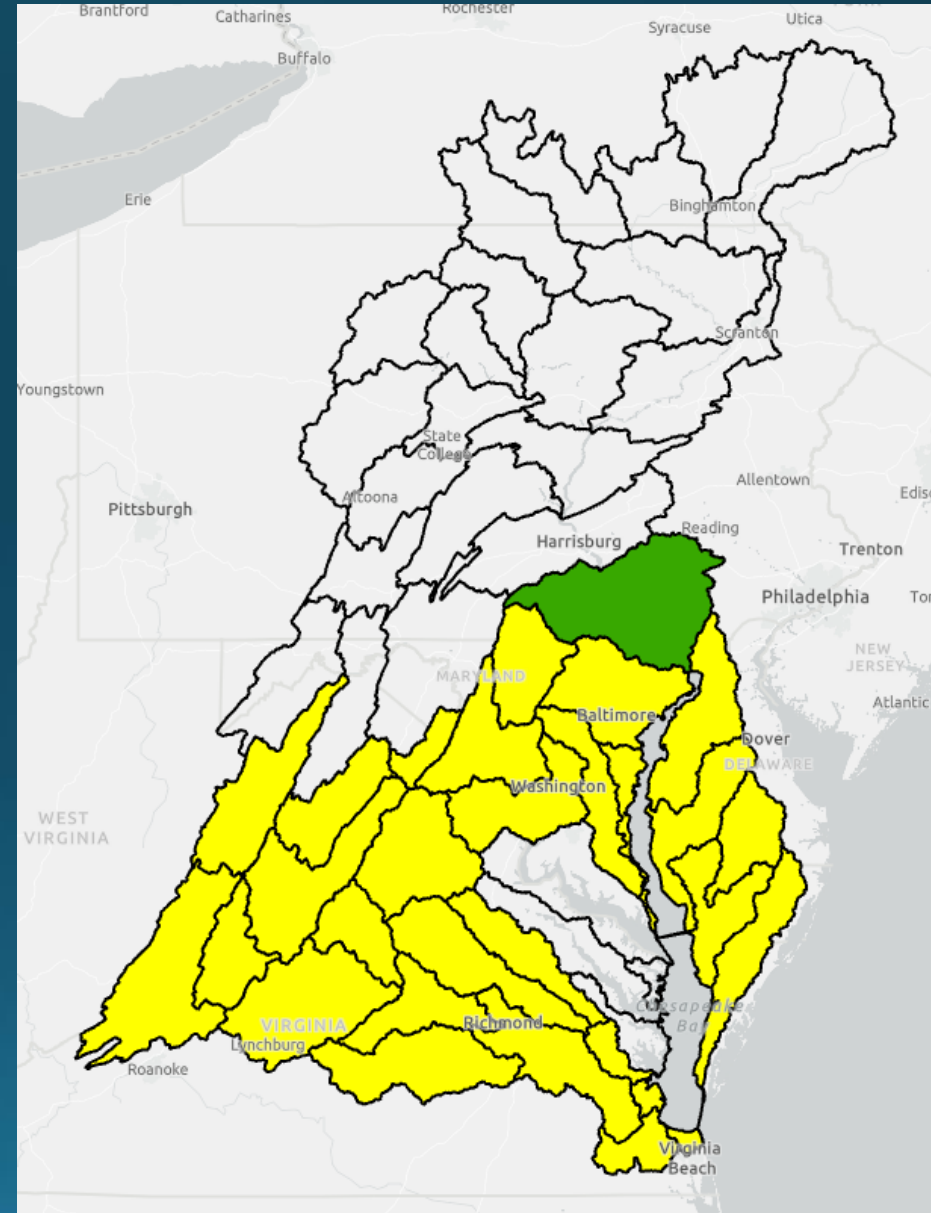
- Montour, PA
- Tioga, PA
- Wyoming, PA
- Clearfield, PA
- Franklin, PA
- Centre, PA
- Chenango, NY
- Madison, NY
- Pendleton, WV
- Monroe, WV
- Buena Vista, VA
- Alleghany, VA
- Covington, VA
- Lexington, VA
- Rockbridge, VA
- Bath, VA
- Botetourt, VA
- Craig, VA
- Giles, VA
- Highland, VA
- Roanoke City and County, VA
- Montgomery, VA
- Salem, VA
- Bedford City and County, VA

Upcoming Localities to Review:

- Botetourt, VA
- Broome, NY
- Herkimer, NY
- Oneida, NY
- Otsego, NY
- Schoharie, NY
- Susquehanna, PA
- Wayne, PA
- New Castle, DE
- District of Columbia
- Allegany, MD
- Garrett, MD
- Kent, MD
- Worcester, MD
- Allegany, NY
- Chemung, NY
- Cortland, NY
- Livingston, NY
- Onondaga, NY
- Schuyler, NY
- Steuben, NY
- Tioga, NY

Objective 2 Updates:

- Calculated bank height for almost all of the HUCs where we have produced preliminary data



Questions?

rsoobitsky@chesapeakeconservancy.org