

## **Landsat Land Cover Change: 1984 –2006**

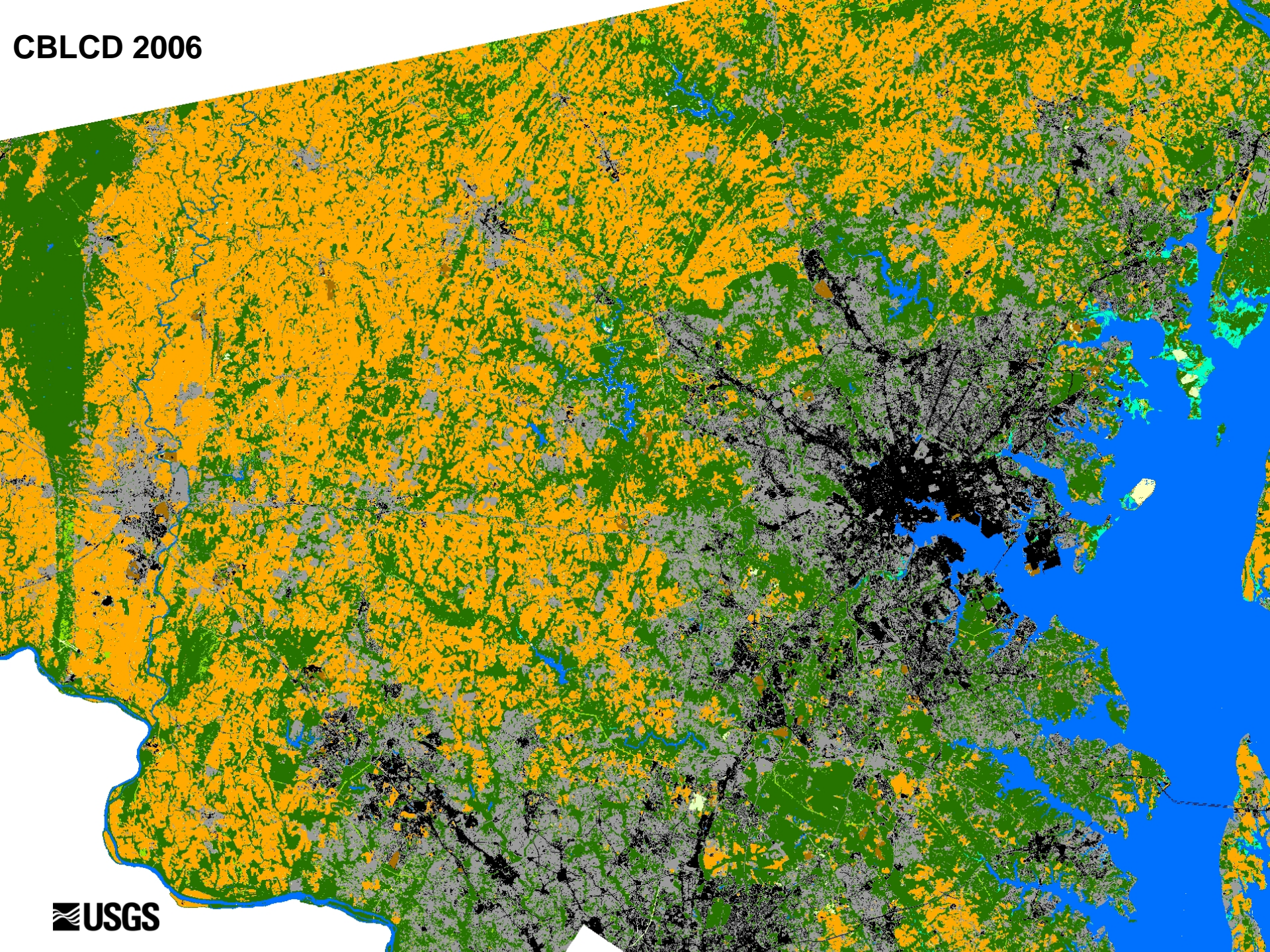
- **Tree canopy decreased 439,000 acres.**
- **Urban area increased 355,000 acres.**
- **Cropland and pasture decreased 93,000 acres.**

## **CBP Modeled Land Use Change: 1985 –2005**

- **Other (forest) lands decreased 105,000 acres.**
- **Urban area increased 960,000 acres.**
- **Cropland and pasture decreased 856,000 acres.**



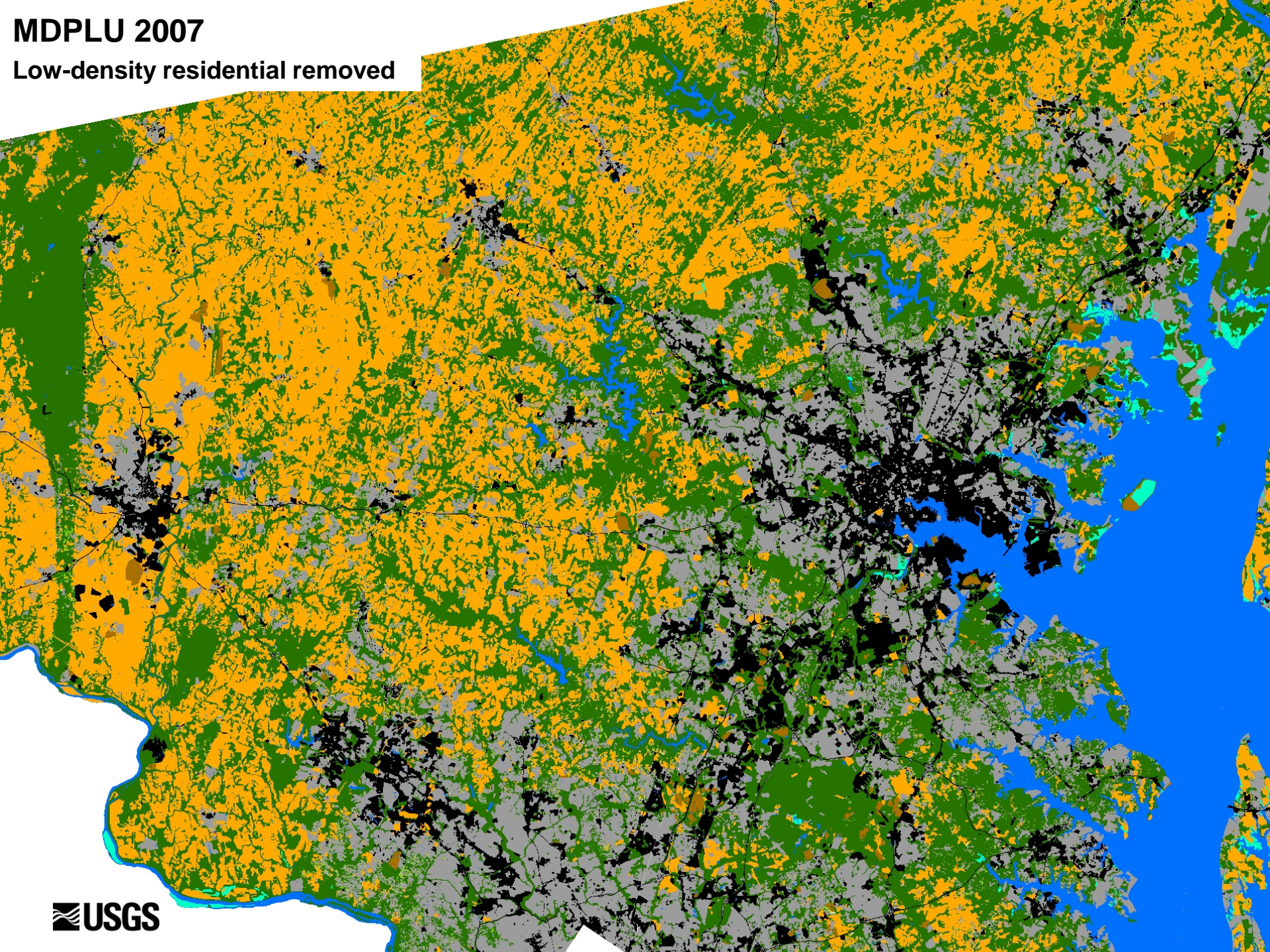
CBLCD 2006



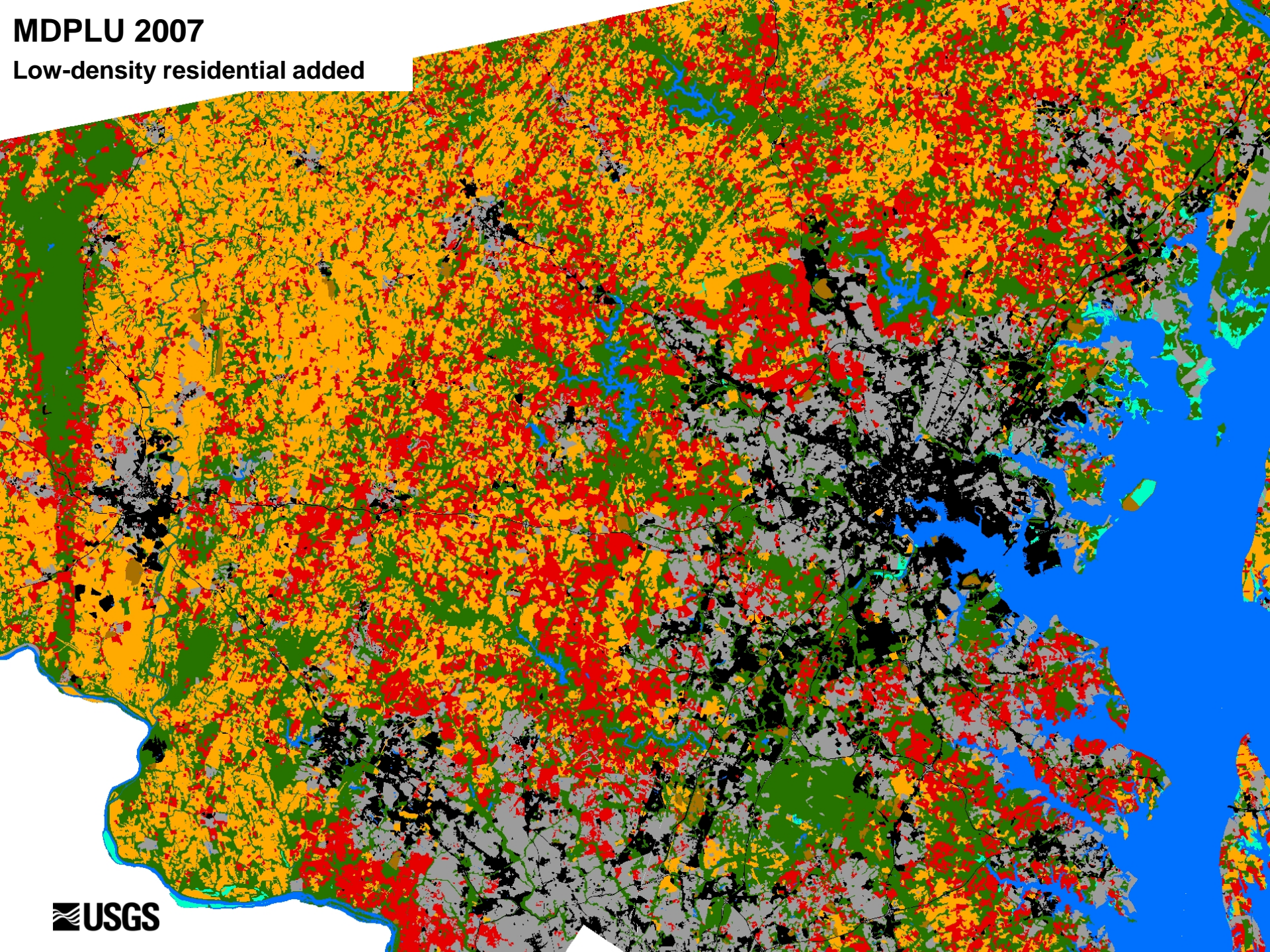
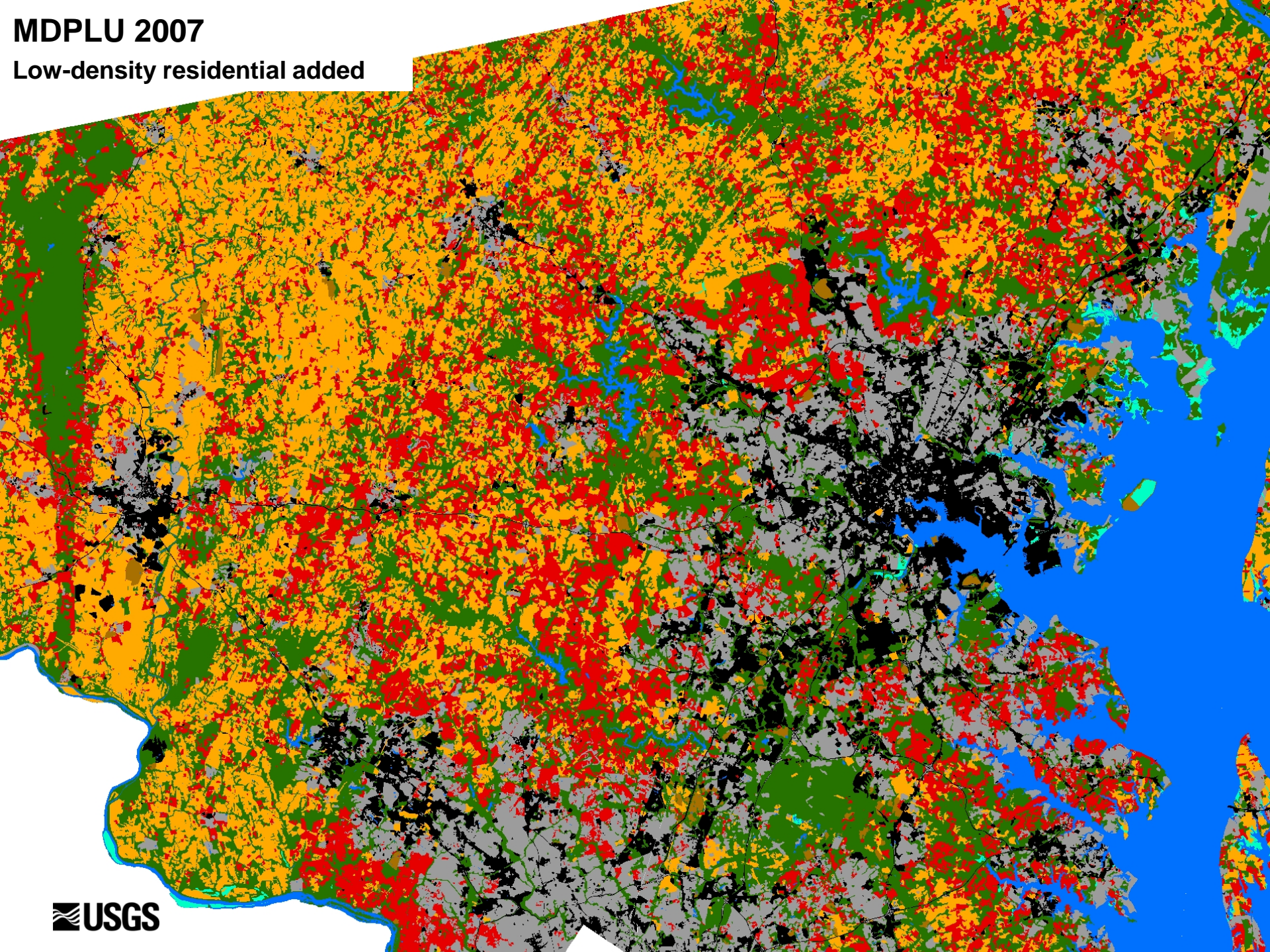


**MDPLU 2007**

Low-density residential removed









# Comparing LULC to Regional LULC

- Compute cross-tabulation of local and regional LULC
- Aggregate classes from both datasets as needed
  - NLCD Low-intensity development =
    - “Developed Open Space” +
    - “Low-intensity Developed”
  - MDP Low-intensity development =
    - “Low-density residential” +
    - “Medium-density residential +
    - “Institutional”
    - “Open urban land”
- Develop final cross-tabulation matrix

MDP Land Use	CBLCD Land Cover								
	Water	Low-int Developed	High-int Developed	Barren	Forest	Scrub-shrub	Agriculture	Wetland	Total
Water	1,645,061	4,061	1,506	982	15,395	1,276	3,133	10,264	1,681,677
Large lot subdivision	825	21,583	592	163	159,466	12,845	112,591	1,932	309,998
Low-intensity Urban	3,304	400,832	75,061	2,241	297,784	35,390	228,738	3,716	1,047,066
High-intensity Urban	866	93,888	142,077	2,556	21,065	2,832	20,666	456	284,404
Barren	767	1,688	1,245	8,147	3,964	427	5,159	121	21,518
Bare ground (MDP)	377	2,941	1,404	3,335	2,700	568	7,608	274	19,207
Forest	11,317	51,481	5,523	3,426	2,085,458	71,201	158,005	22,158	2,408,569
Agriculture	3,921	60,353	5,156	4,213	169,597	36,852	1,615,028	8,132	1,903,251
Emergent Wetland	27,267	2,176	297	682	36,179	2,042	5,016	154,802	228,462
Total	1,693,704	639,003	232,861	25,745	2,791,608	163,432	2,155,944	201,856	7,904,153



# Comparing LULC to Regional LULC

MDP Land Use	CBLCD Land Cover									
	Water	Low-int Developed	High-int Developed	Barren	Forest	Scrub-shrub	Agriculture	Wetland	Total	User's Accuracy
Water	1,645,061	4,061	1,506	982	15,395	1,276	3,133	10,264	1,681,677	97.8%
Large lot subdivision	825	21,583	592	163	159,466	12,845	112,591	1,932	309,998	
Low-intensity Urban	3,304	400,832	75,061	2,241	297,784	35,390	228,738	3,716	1,047,066	38.3%
High-intensity Urban	866	93,888	142,077	2,556	21,065	2,832	20,666	456	284,404	50.0%
Barren	767	1,688	1,245	8,147	3,964	427	5,159	121	21,518	37.9%
Bare ground (MDP)	377	2,941	1,404	3,335	2,700	568	7,608	274	19,207	17.4%
Forest	11,317	51,481	5,523	3,426	2,085,458	71,201	158,005	22,158	2,408,569	86.6%
Agriculture	3,921	60,353	5,156	4,213	169,597	36,852	1,615,028	8,132	1,903,251	84.9%
Emergent Wetland	27,267	2,176	297	682	36,179	2,042	5,016	154,802	228,462	67.8%
Total	1,693,704	639,003	232,861	25,745	2,791,608	163,432	2,155,944	201,856	7,904,153	
Producer's Accuracy	97.1%	62.7%	61.0%	31.6%	74.7%	43.6%	74.9%	76.7%		

CBLCD Land Cover + Road Density										
MDP Land Use	Water	Low-int Developed	High-int Developed	Barren	Forest	Scrub-shrub	Agriculture	Wetland	Total	User's Accuracy
Water	1,645,200	15,496	1,506	897	13,763	1,132	2,961	10,264	1,691,219	97.3%
Large lot subdivision	825	50,664	593	155	142,581	11,321	102,501	1,933	310,572	
Low-intensity Urban	3,304	644,196	75,062	1,259	147,067	19,028	153,787	3,716	1,047,419	61.5%
High-intensity Urban	866	114,425	142,094	1,716	10,014	1,547	13,348	456	284,466	50.0%
Barren	767	2,122	1,245	7,890	3,892	420	5,062	121	21,518	36.7%
Bare ground (MDP)	749	4,983	1,404	2,961	2,266	508	6,466	274	19,612	15.1%
Forest	11,459	163,565	5,536	3,190	1,994,549	67,569	151,085	22,158	2,419,112	82.4%
Agriculture	3,921	120,359	5,158	4,033	164,023	34,911	1,566,180	8,138	1,906,721	82.1%
Emergent Wetland	27,273	3,160	297	672	35,397	1,985	4,899	154,802	228,484	67.8%
Total	1,694,363	1,118,970	232,894	22,773	2,513,552	138,422	2,006,289	201,862	7,929,124	
Producer's Accuracy	97.1%	57.6%	61.0%	34.6%	79.4%	48.8%	78.1%	76.7%		



