

Objective 1 Update

June 5, 2019 : LUWG

Rachel Soobitsky

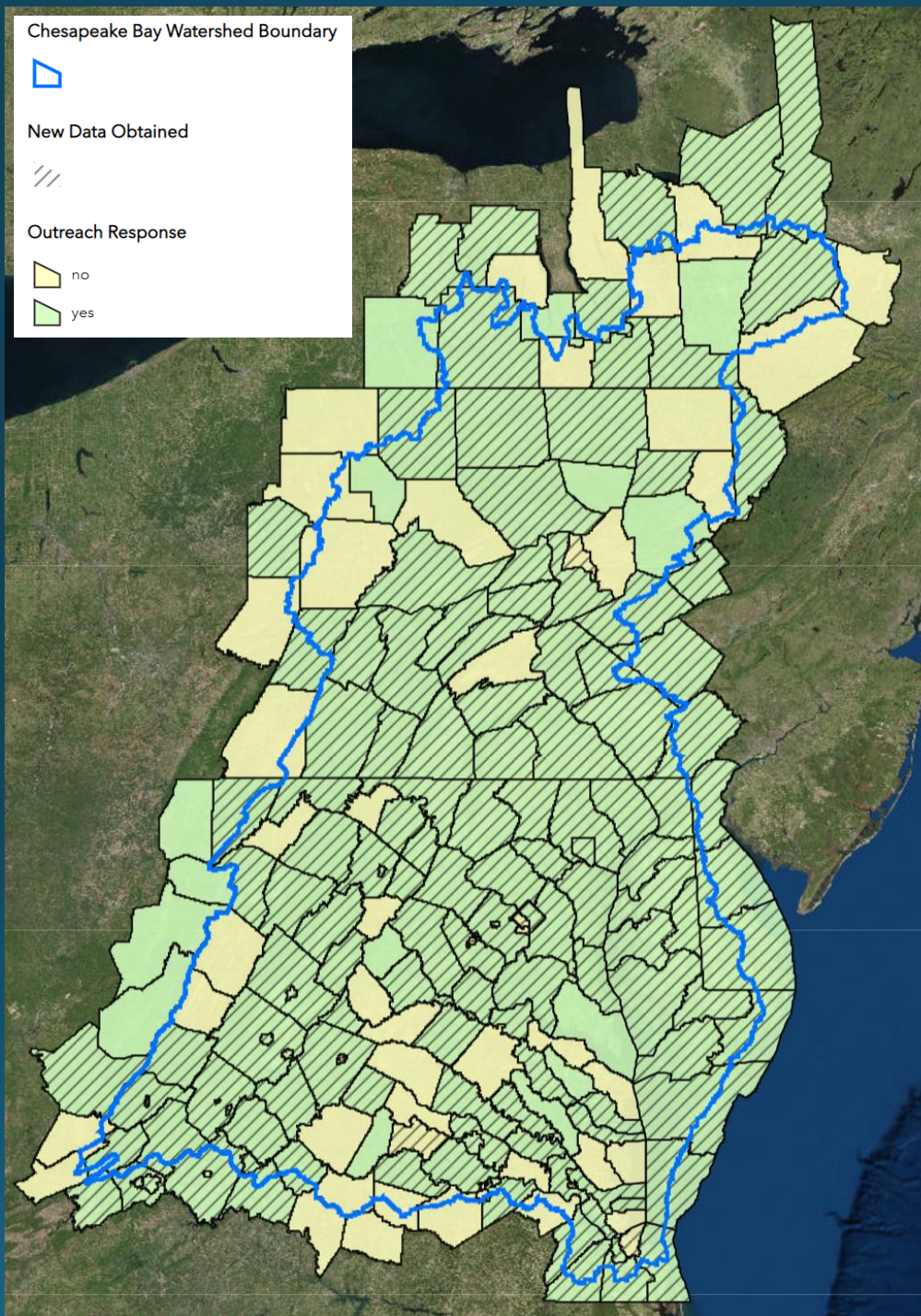
Land Cover Hotspots



- What: Full wall-to-wall 2013/14 land cover with hot spots updated for 2017/18, hot spot (filtered LCMAP) boundaries
- When: June – August (missing 2018 NAIP for VA and WV)

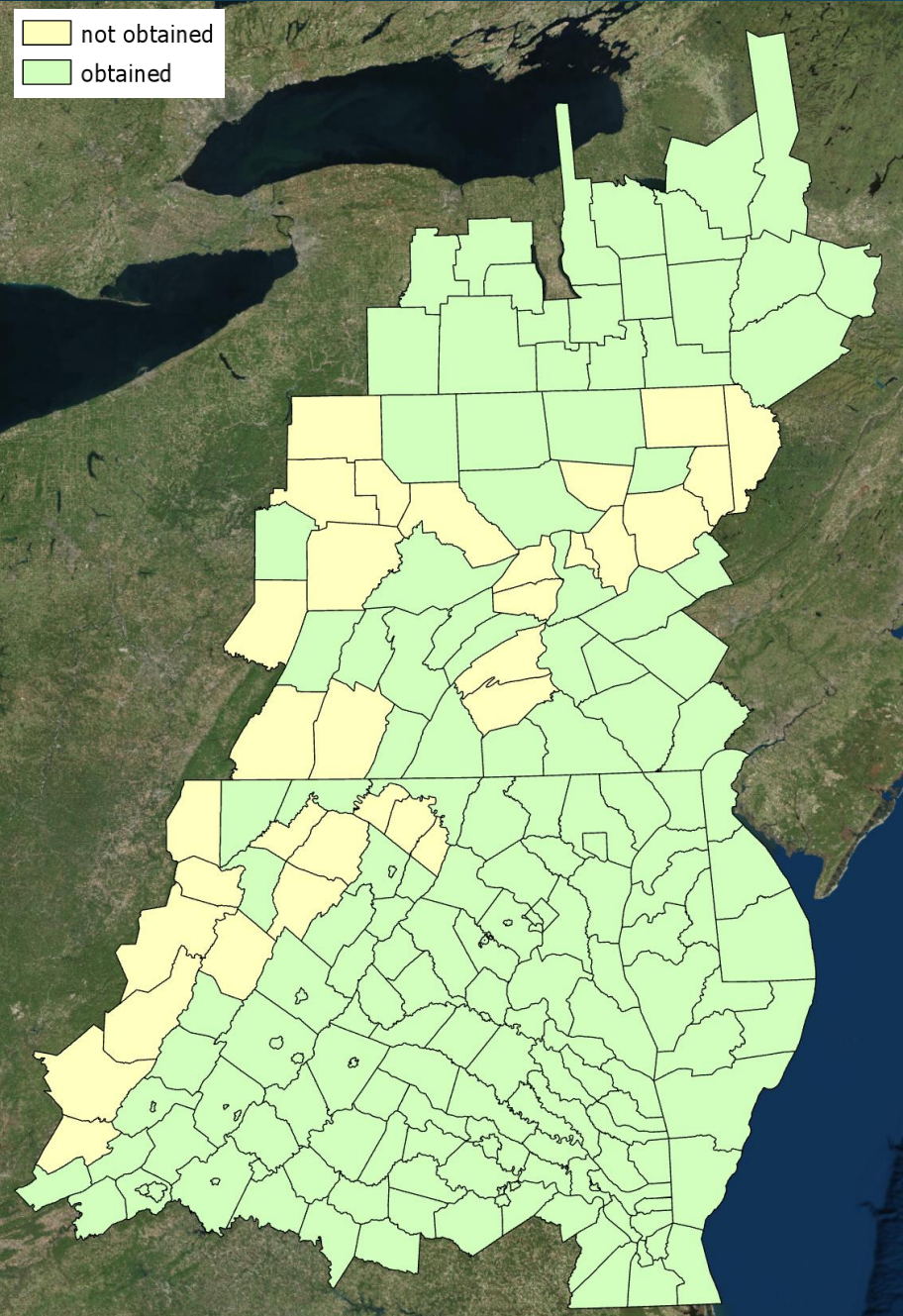
<https://tinyurl.com/CBP>
Obj1OutreachResults

MD - 24/24
DC
DE - 3/3
WV - 10/14
VA - 71/98
PA - 33/43
NY - 13/20

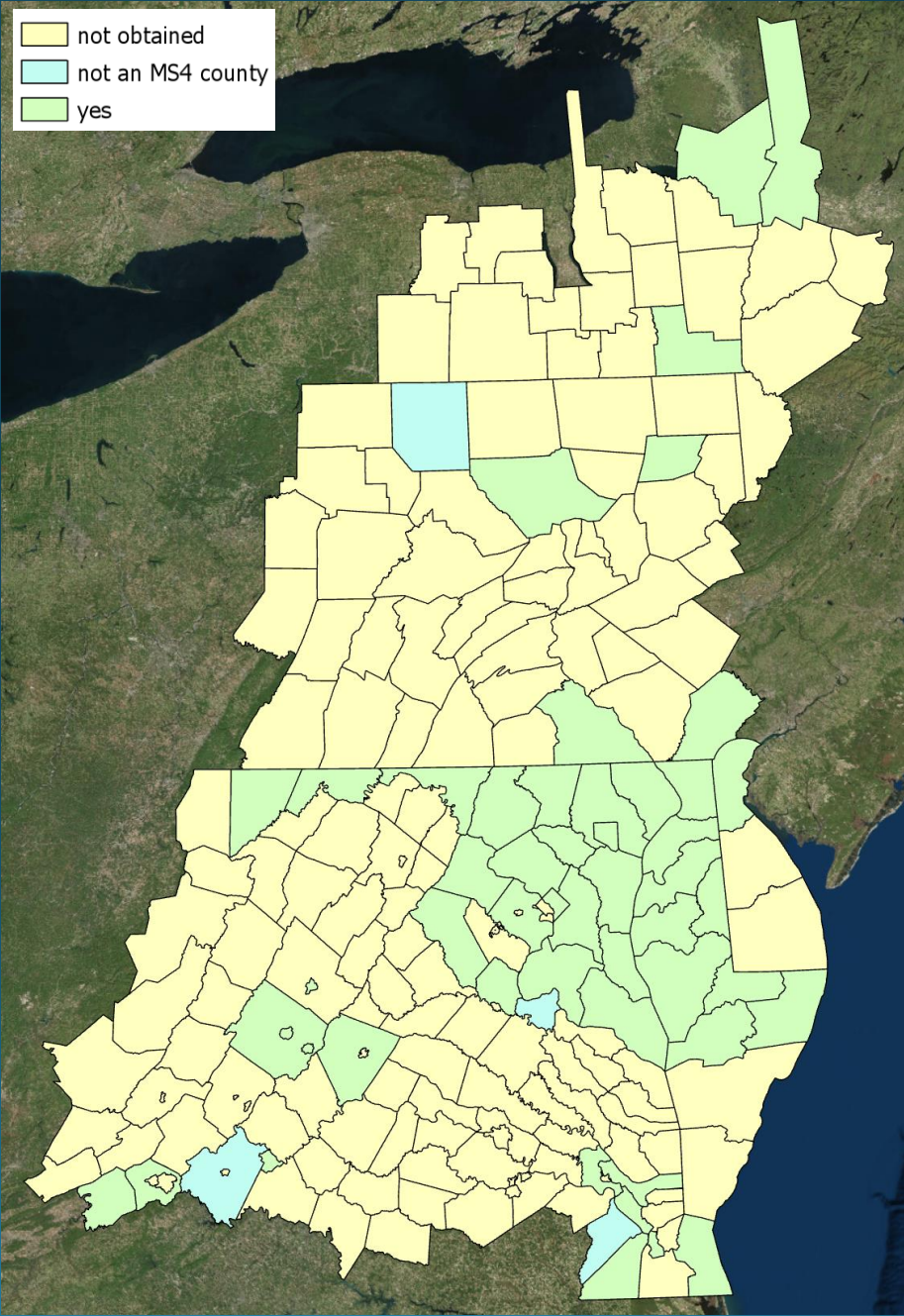


- Received new data from 144/206 localities = ~70%
- Responses from 155/206 localities = ~75%
- Microsoft Building Footprints- we have buildings for 100% of localities.
- Received county building footprints from 44/207 localities

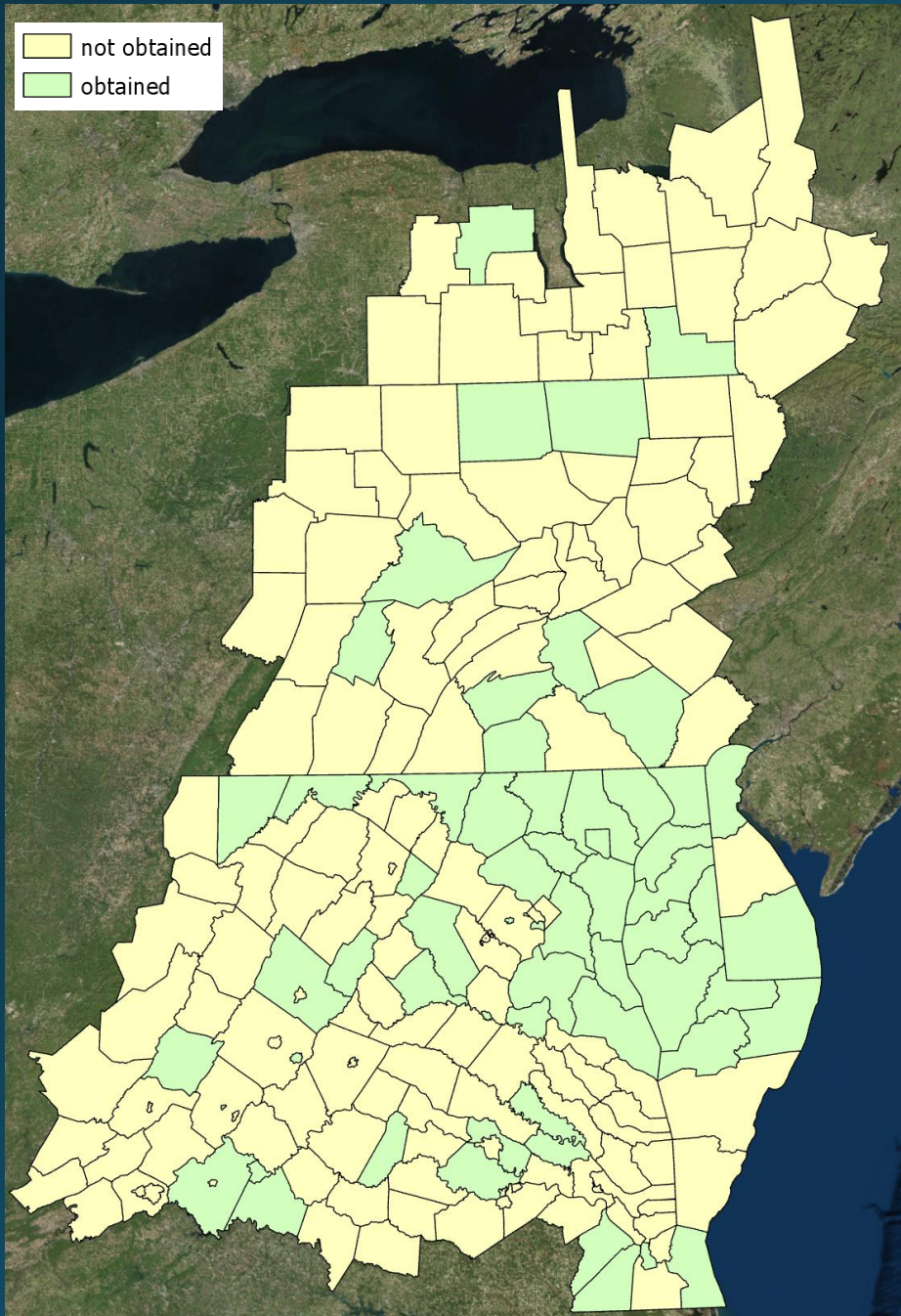
Street Centerlines



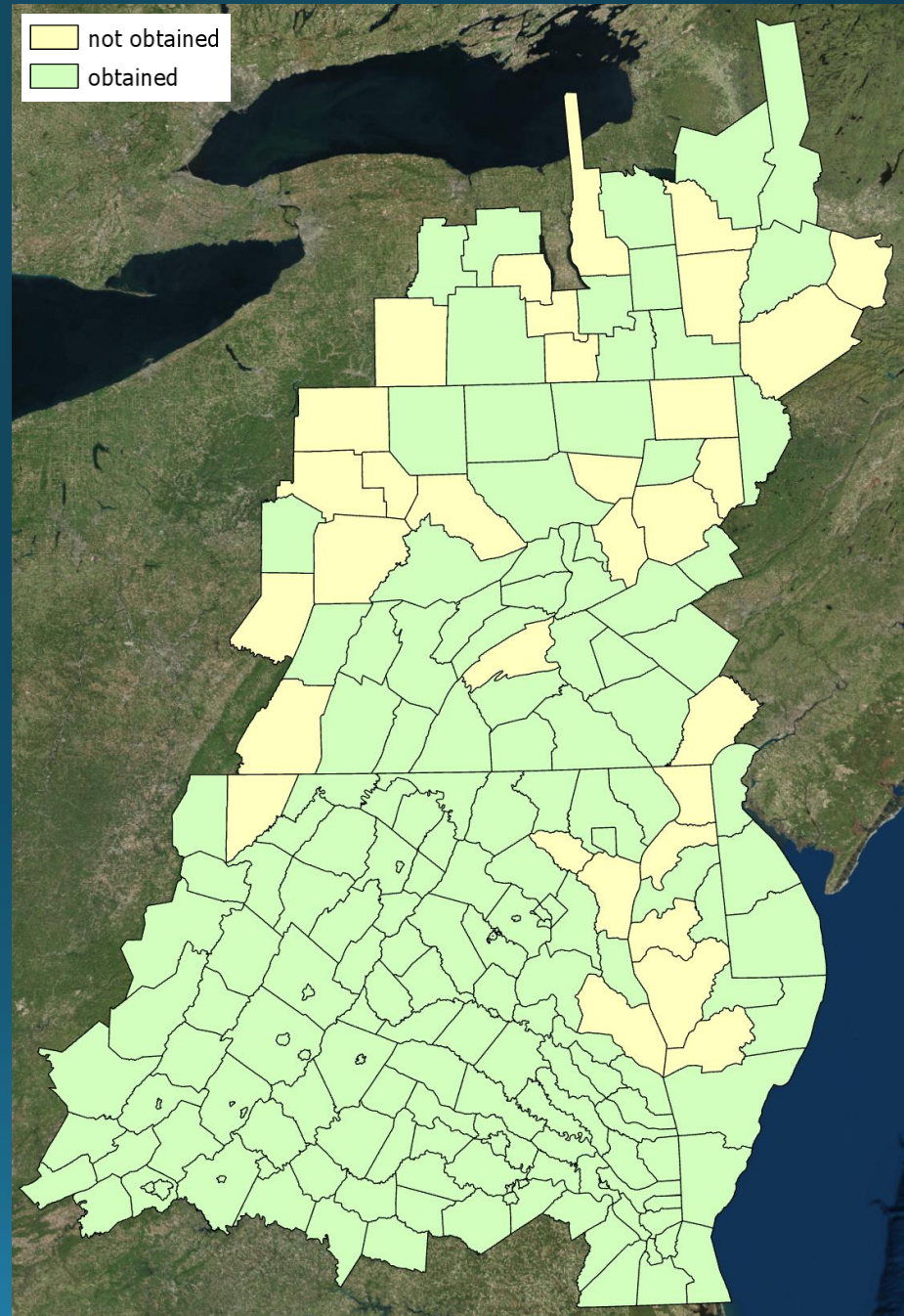
MS4



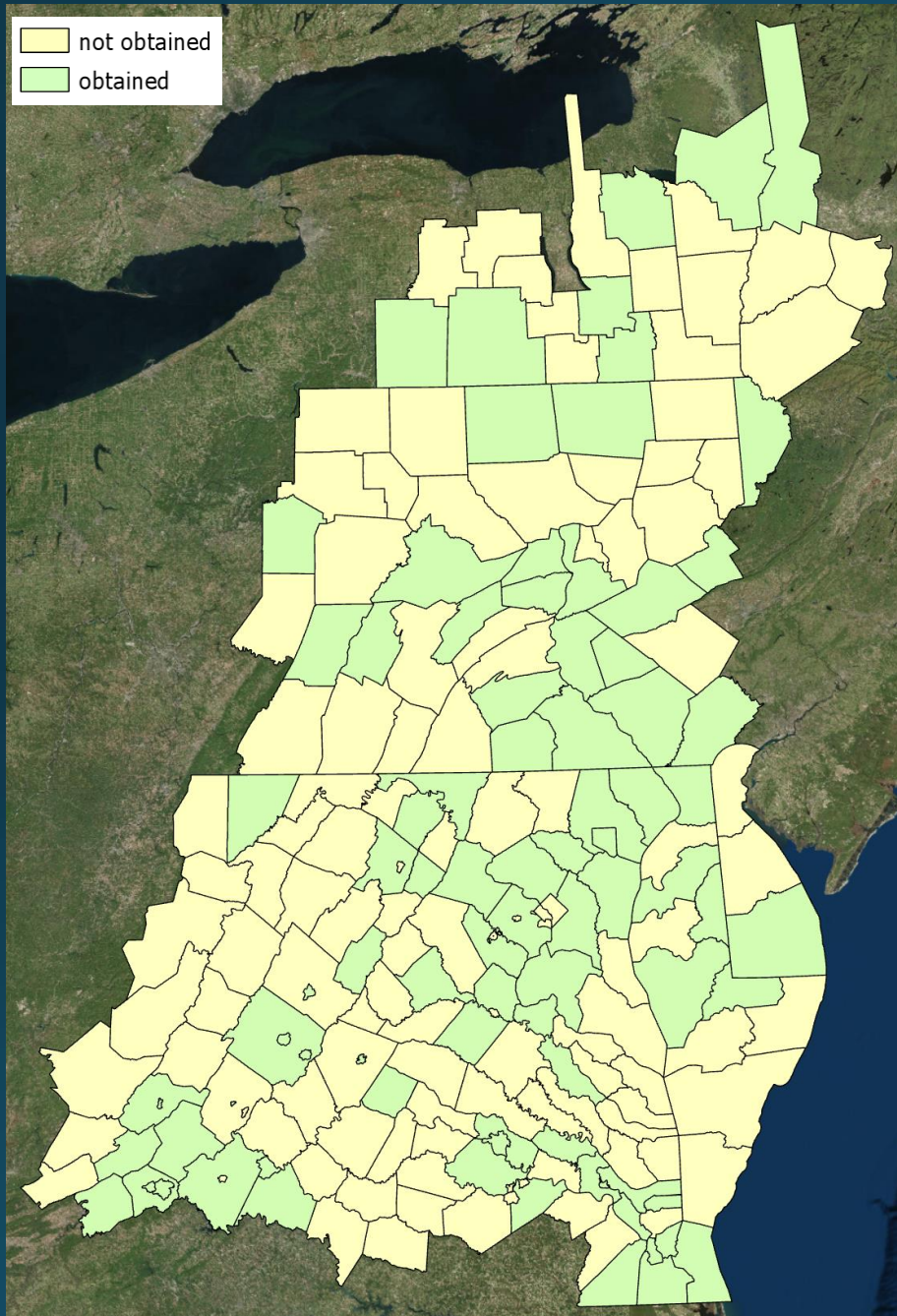
Sewer Service



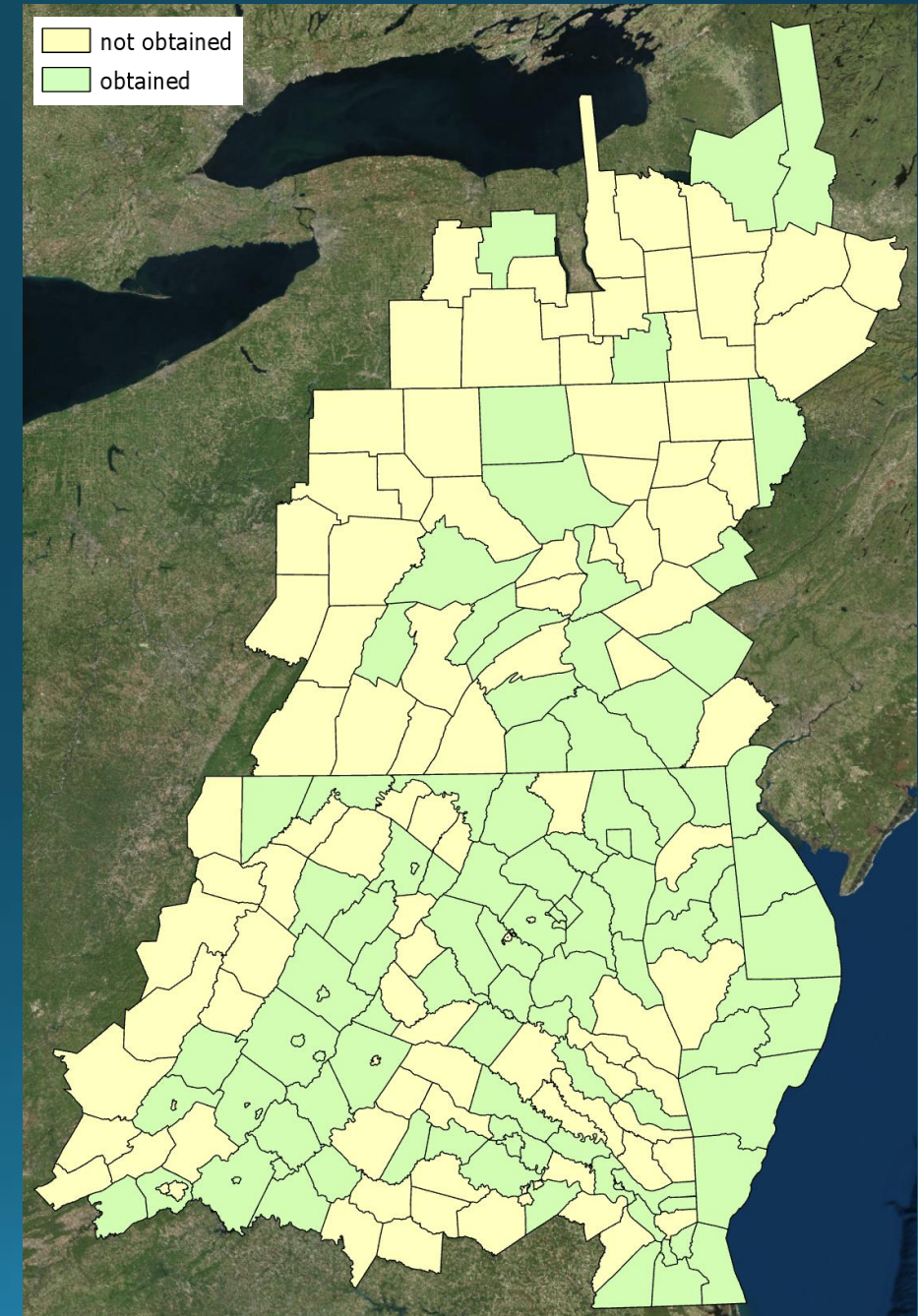
Parcels



Land Use/Land Cover



Zoning



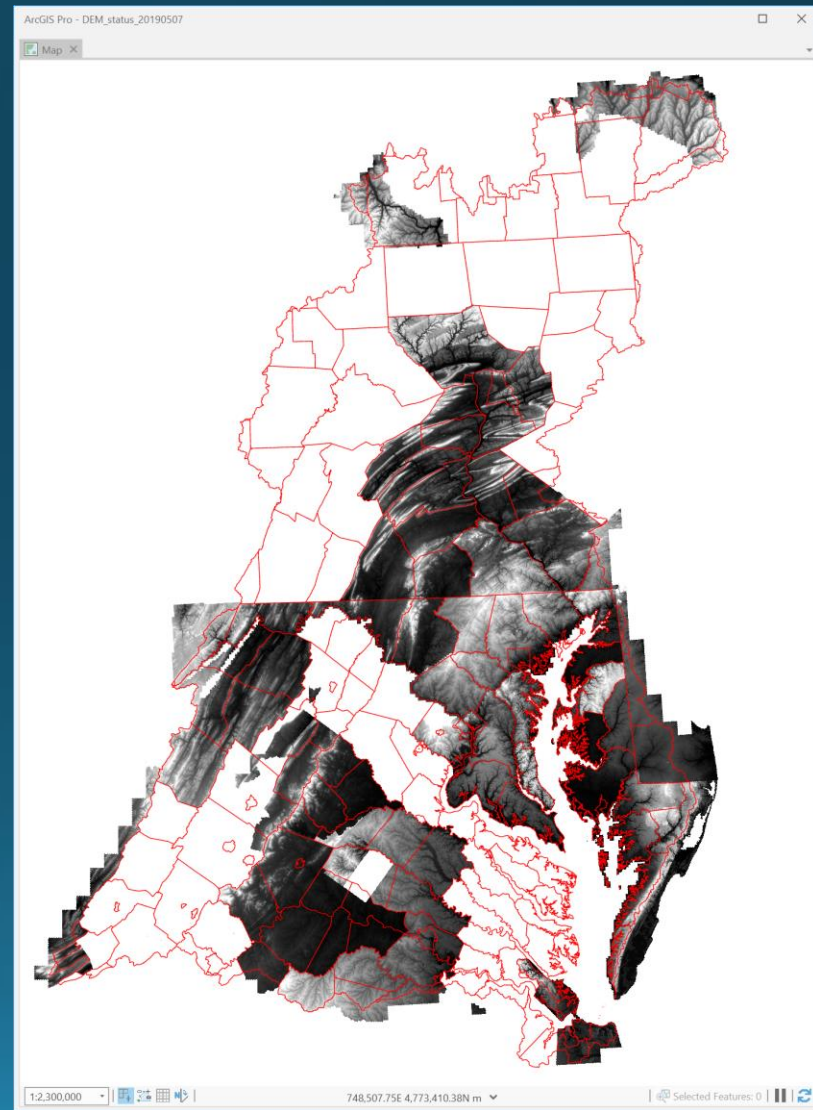
Objective 2 Update

June 5, 2019 : LUWG

David Saavedra

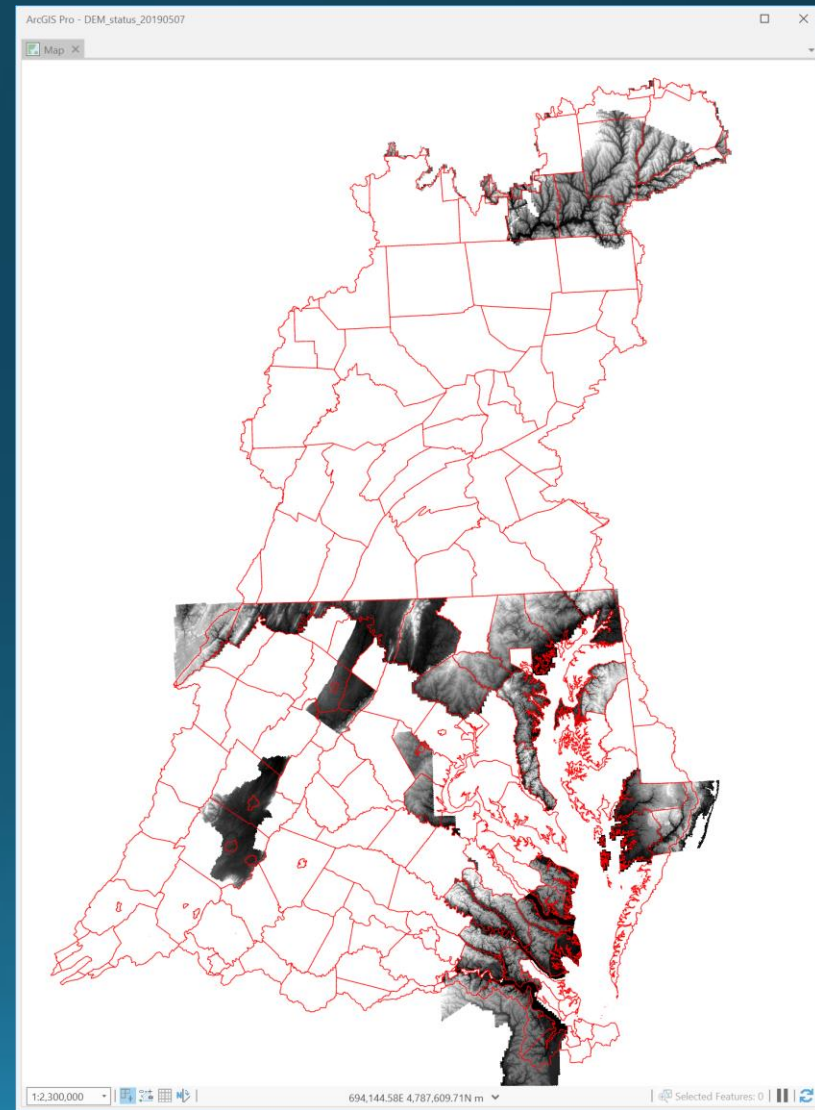
LiDAR collection efforts

- Bulk download of all 3DEP 1-m DEMs available from The National Map intersecting CBW polygon
- Individual tiles mosaicked to create single DEM per LiDAR collection, e.g. MD_PA_SandySupp_2014



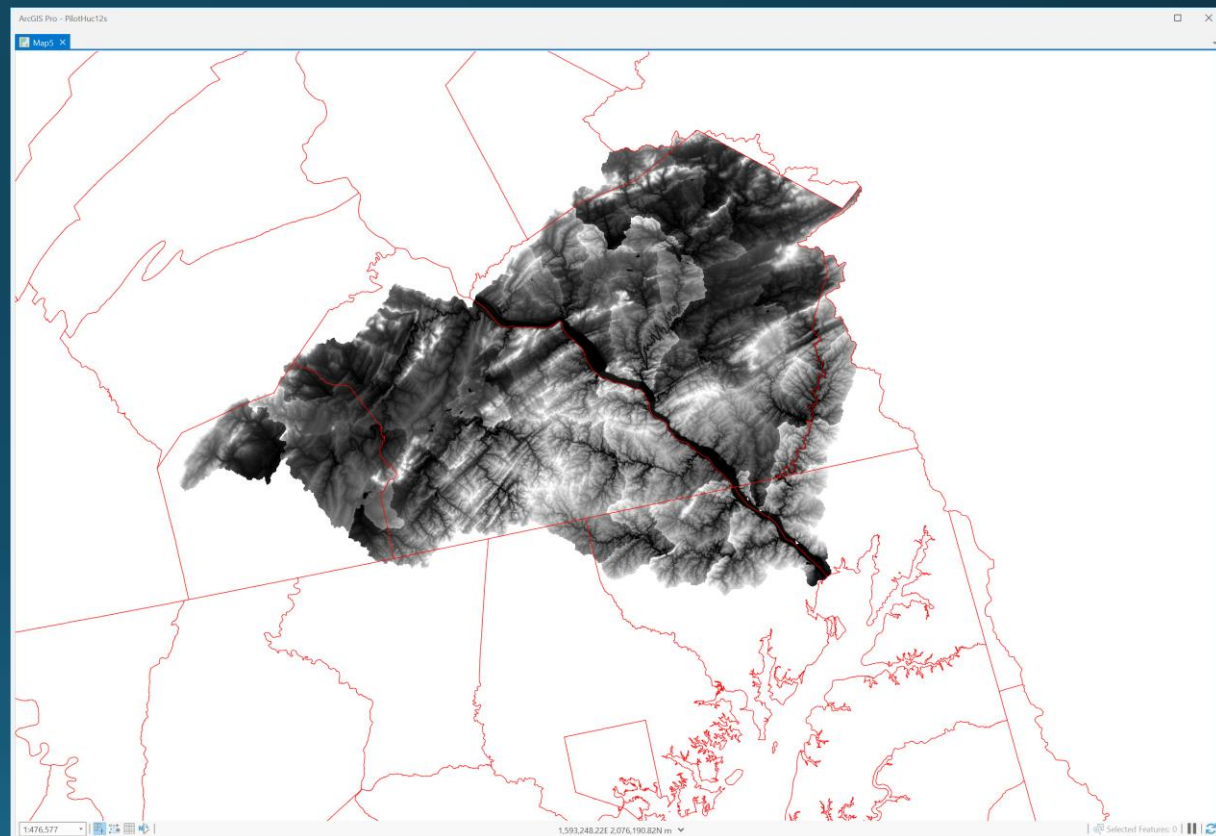
LiDAR collection efforts

- Supplemented with DEMs from state agencies (e.g. MD iMap, VGIN, NYGIS) where 3DEP DEMs were not available
- Quality level / DEM resolution varied
- Did not collect DEMs derived from old/poor LiDAR where new LiDAR is underway, e.g. 2006/2008 QL3 PA statewide
- Some DEM tiles missing from several VA collections



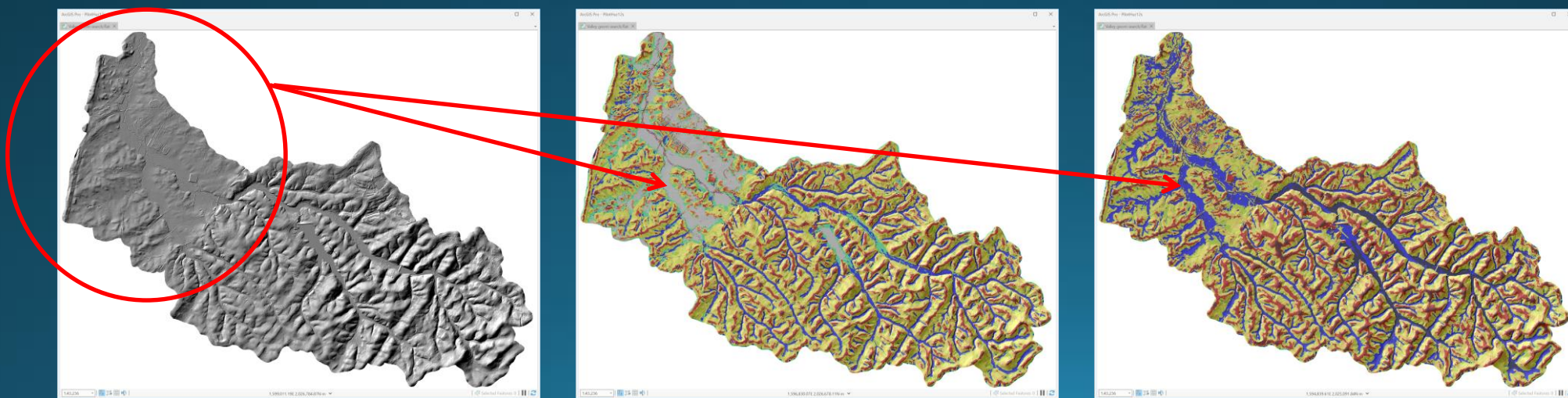
Lower Susquehanna Pilot

- Pilot timeline:
 - July – expect to have initial maps complete
 - August – make initial corrections and solicit feedback
 - September – make changes / corrections based on feedback



Pilot Progress

- “Pre-pilot” on three HUC12s to see how methods scale and make adjustments
- Refining automated channel filtering methods (shape-based vs. area-based) **(right)**
- Adjusting valley delineation to perform better in high- and low-relief landscapes **(bottom)**
- Optimizing scripts to process faster



Questions?

- rsoobitsky@chesapeakeconservancy.org
- dsaavedra@chesapeakeconservancy.org