



CBP 2017 Land Use Production Schedule

Peter Claggett, Coordinator
CBP Land Use Workgroup

Proposed Final CBP Land Use Classification

1. Water (8)

1.1 Lotic

- 1.1.1 Estuary
- 1.1.2 Lakes & Ponds

1.2 Lentic

- 1.2.1 Streams
 - 1.2.1.1 Daylighted
 - 1.2.1.2 Shaded
 - 1.2.1.3 Culverted/ Buried
- 1.2.2 Ditches
 - 1.2.2.1 Daylighted
 - 1.2.2.2 Shaded
 - 1.2.2.3 Culverted/ Buried

2. Developed (13)

2.1 Infrastructure

- 2.1.1 Roads
- 2.1.2 Railroads
- 2.1.3 Tree Canopy over Roads
- 2.1.4 Structures
- 2.1.5 Tree Canopy over Structures
- 2.1.6 Other Impervious
- 2.1.7 Tree Canopy over Other Impervious
- 2.1.8 Right-of-ways
 - 2.1.8.1 Barren
 - 2.1.8.2 Herbaceous
 - 2.1.8.3 Scrub-shrub

2.2 Bare Construction

2.3 Turf Grass

2.4 Tree Canopy over Turf Grass

3. Forest (5)

3.1 Contiguous (> 1 acre)

3.2 Fragmented (< 1 acre)

3.3 Natural Succession (e.g., Fallow)

- 3.3.1 Barren
- 3.3.2 Herbaceous
- 3.3.3 Scrub-shrub

4. Production (14)

4.1 Agriculture

- 4.1.1 Cropland
 - 4.1.1.1 Barren
 - 4.1.1.2 Herbaceous
- 4.1.2 Pasture
 - 4.1.2.1 Barren
 - 4.1.2.2 Herbaceous
- 4.1.3 Orchard/vineyard
 - 4.1.3.1 Barren
 - 4.1.3.2 Herbaceous
 - 4.1.3.3 Scrub-shrub

4.2 Timber Harvest

- 4.2.1 Barren
- 4.2.2 Herbaceous
- 4.2.2 Scrub-shrub

4.3 Extractive

- 4.3.1 Barren
- 4.3.2 Herbaceous
- 4.3.3 Scrub-shrub

4.4 Solar fields

5. Wetland (19)

5.1 Tidal

- 5.1.1 Open water
- 5.1.2 Barren
- 5.1.3 Herbaceous
- 5.1.4 Scrub-shrub
- 5.1.5 Contiguous Forest
- 5.1.6 Fragmented Forest

5.2 Non-tidal

- 5.2.1 Floodplain/ Headwater
 - 5.2.1.1 Open water
 - 5.2.1.2 Barren
 - 5.2.1.3 Herbaceous
 - 5.2.1.4 Scrub-shrub
 - 5.2.1.5 Contiguous Forest
 - 5.2.1.6 Fragmented Forest
- 5.2.2 Other
 - 5.2.2.1 Open water
 - 5.2.2.2 Barren
 - 5.2.2.3 Herbaceous
 - 5.2.2.4 Scrub-shrub
 - 5.2.2.5 Contiguous Forest
 - 5.2.2.6 Fragmented Forest

5.3 Bare shore

Land Use Decision Rule Counties

Set #1. Decision Rule Development Counties (mapped 2013 Land Use Under-estimates Total Agriculture)

Lancaster, PA

Tioga, PA

Sussex, DE

Queen Anne's, MD

Hardy, WV

Fauquier, VA

Augusta, VA

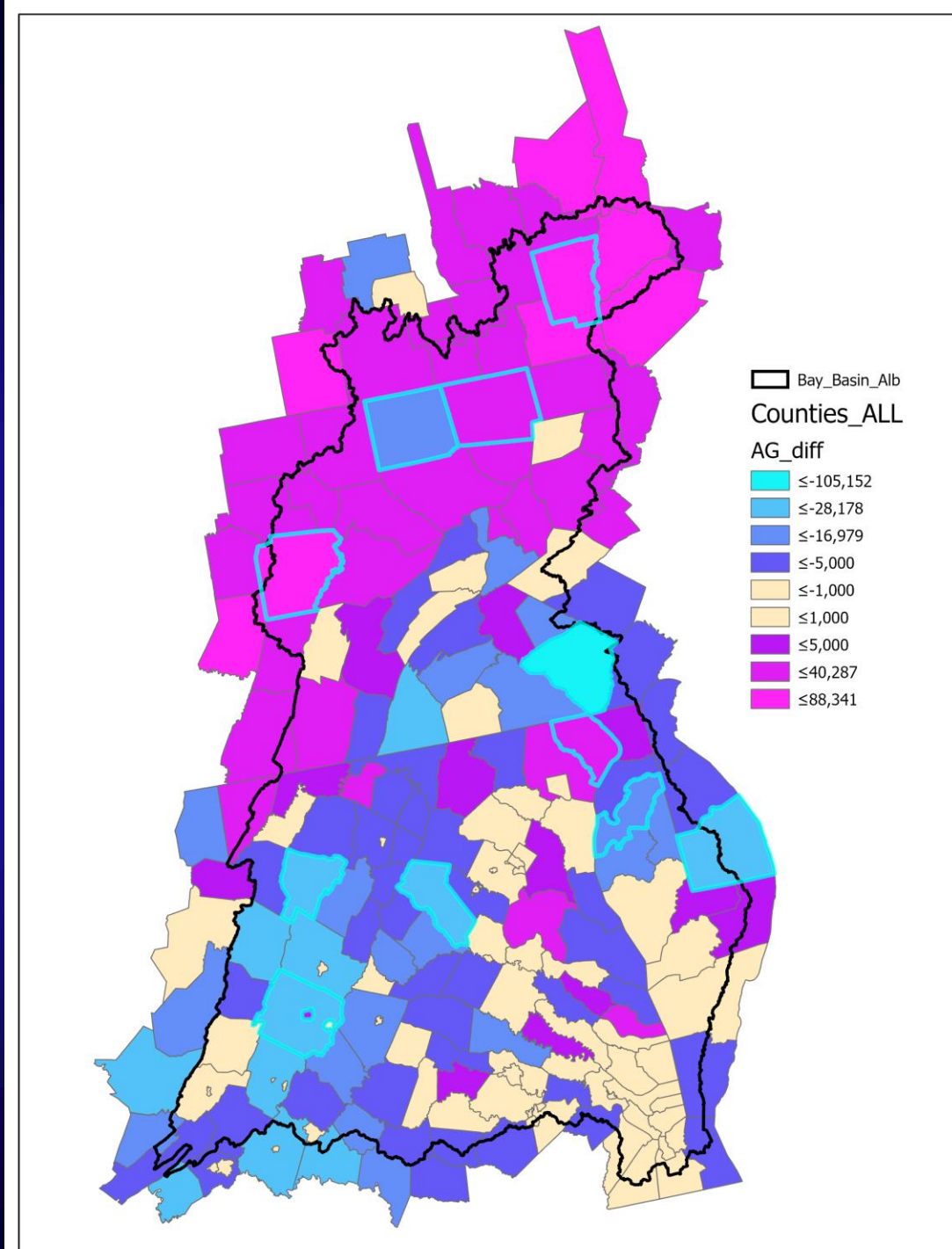
Set #2. Decision Rule Development Counties (mapped 2013 Land Use Over-estimates Total Agriculture)

Chenango, NY

Clearfield, PA

Bradford, PA

Harford, MD

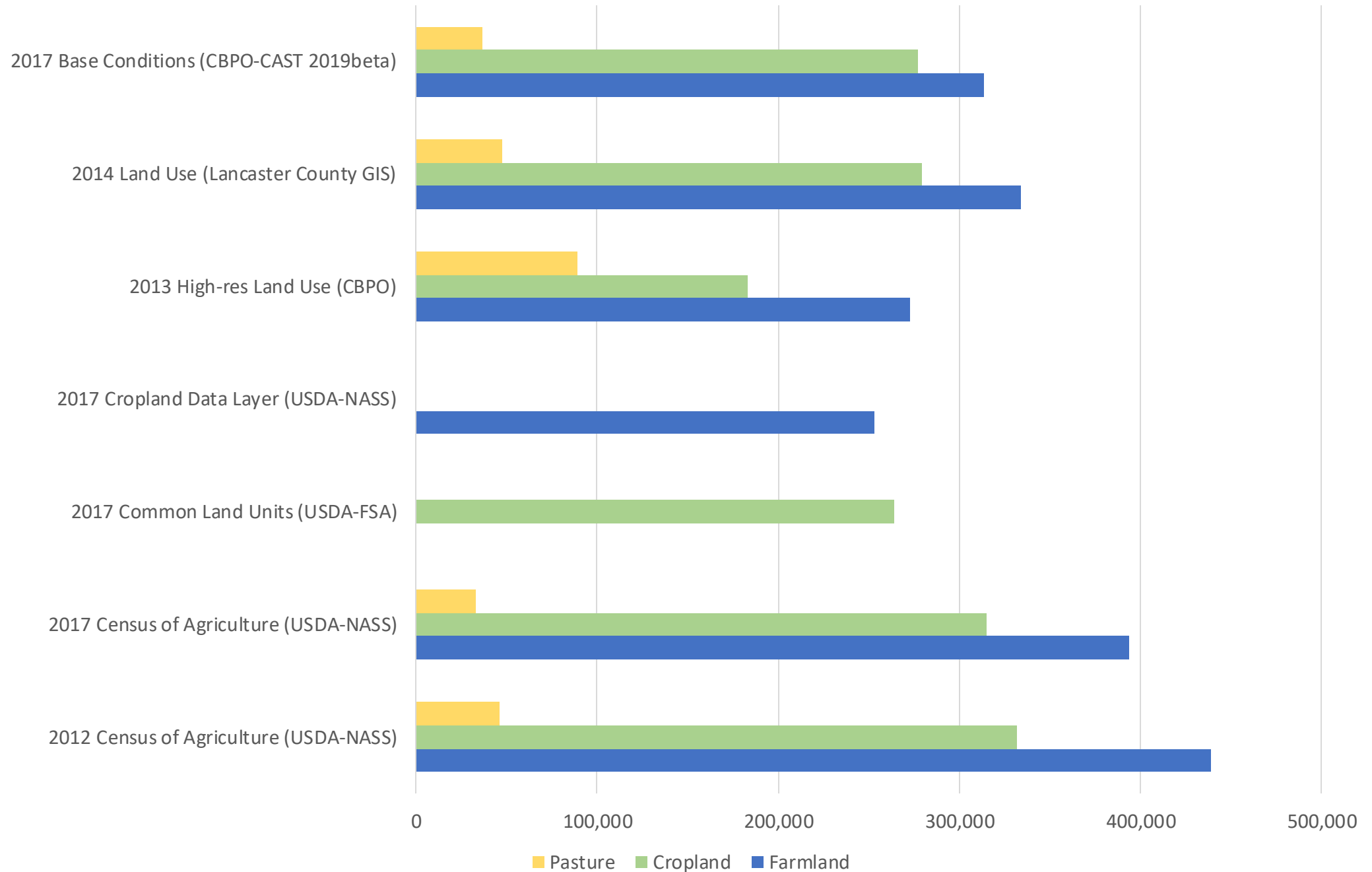


Lancaster County, PA

Agricultural Land Use

Peter Claggett,
Research Geographer
U.S. Geological Survey

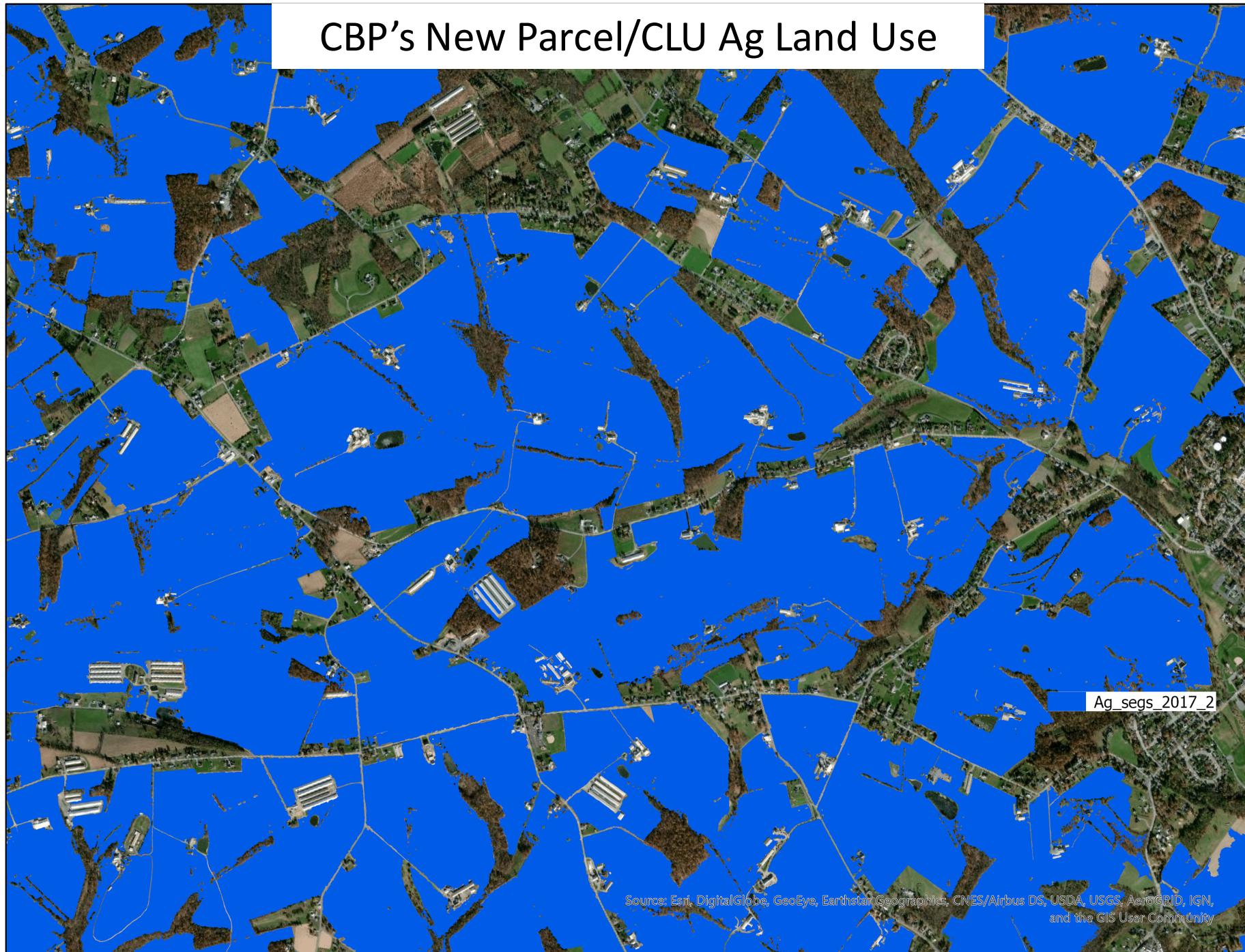
Lancaster County Ag Estimates Breakdown by Data Source



Lancaster County's Ag Land Use



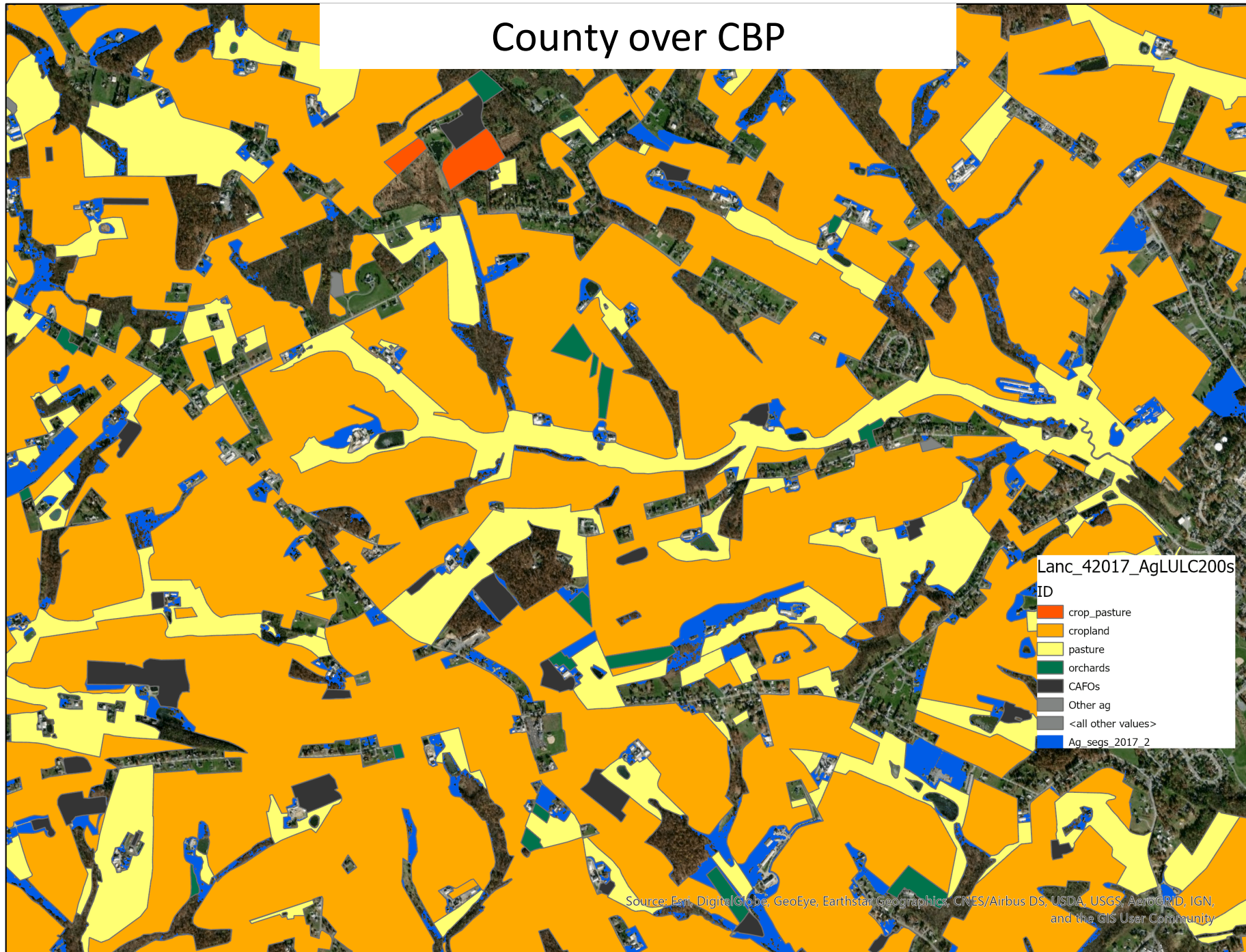
CBP's New Parcel/CLU Ag Land Use



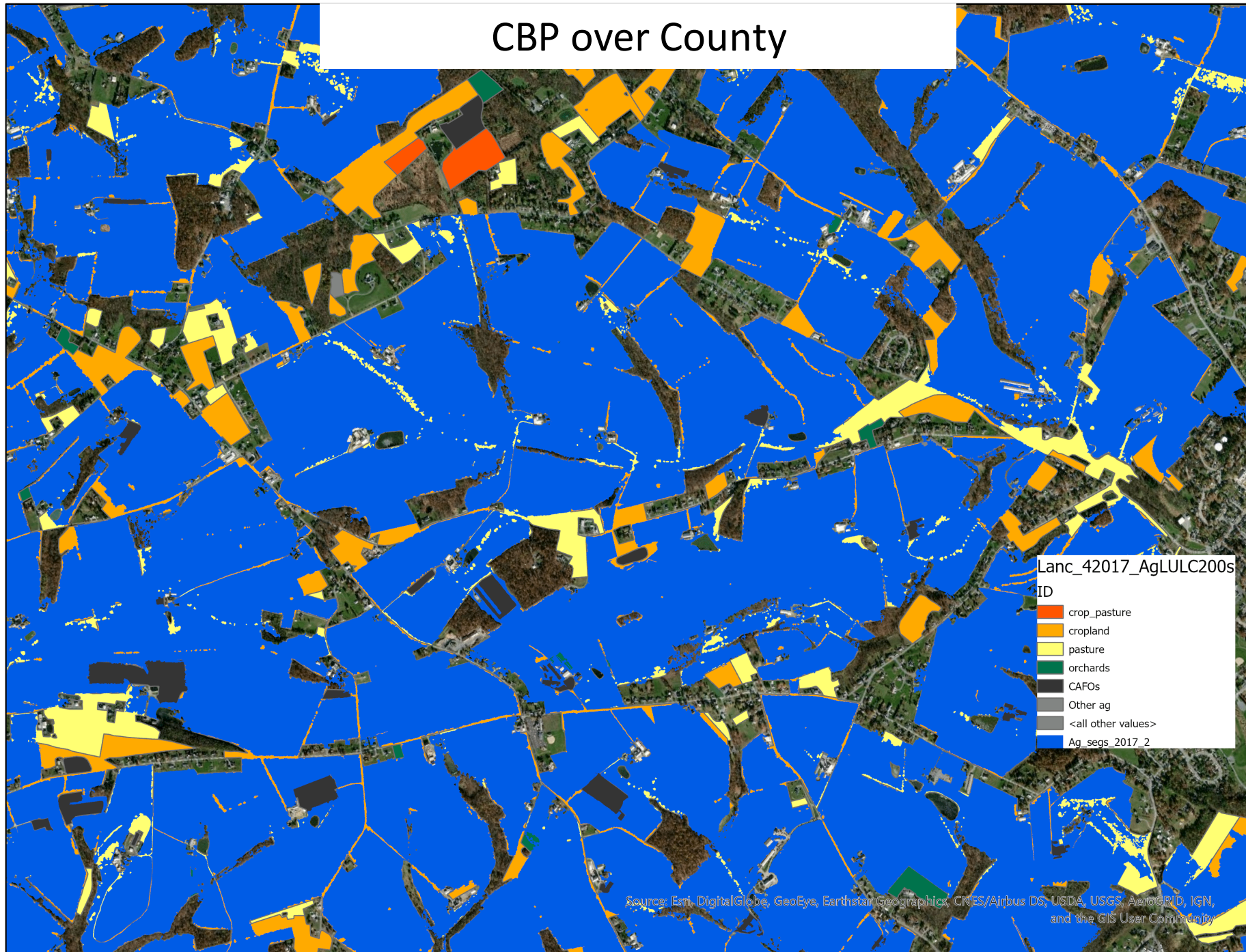
Ag_segs_2017_2

Source: Esri, DigitalGlobe, GeoEye, Earthstar Geographics, CNES/Airbus DS, USDA, USGS, AeroGRID, IGN, and the GIS User Community

County over CBP



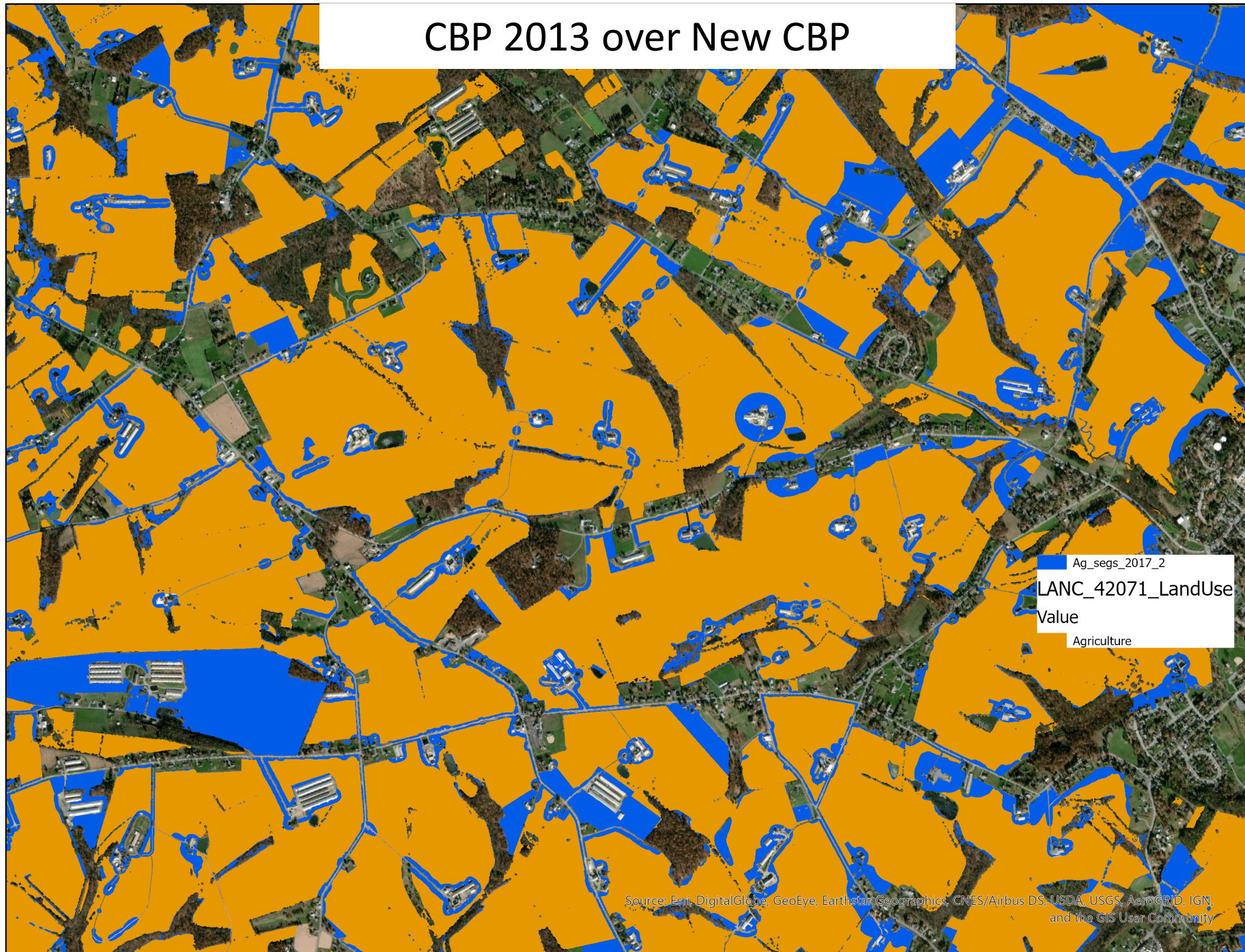
CBP over County



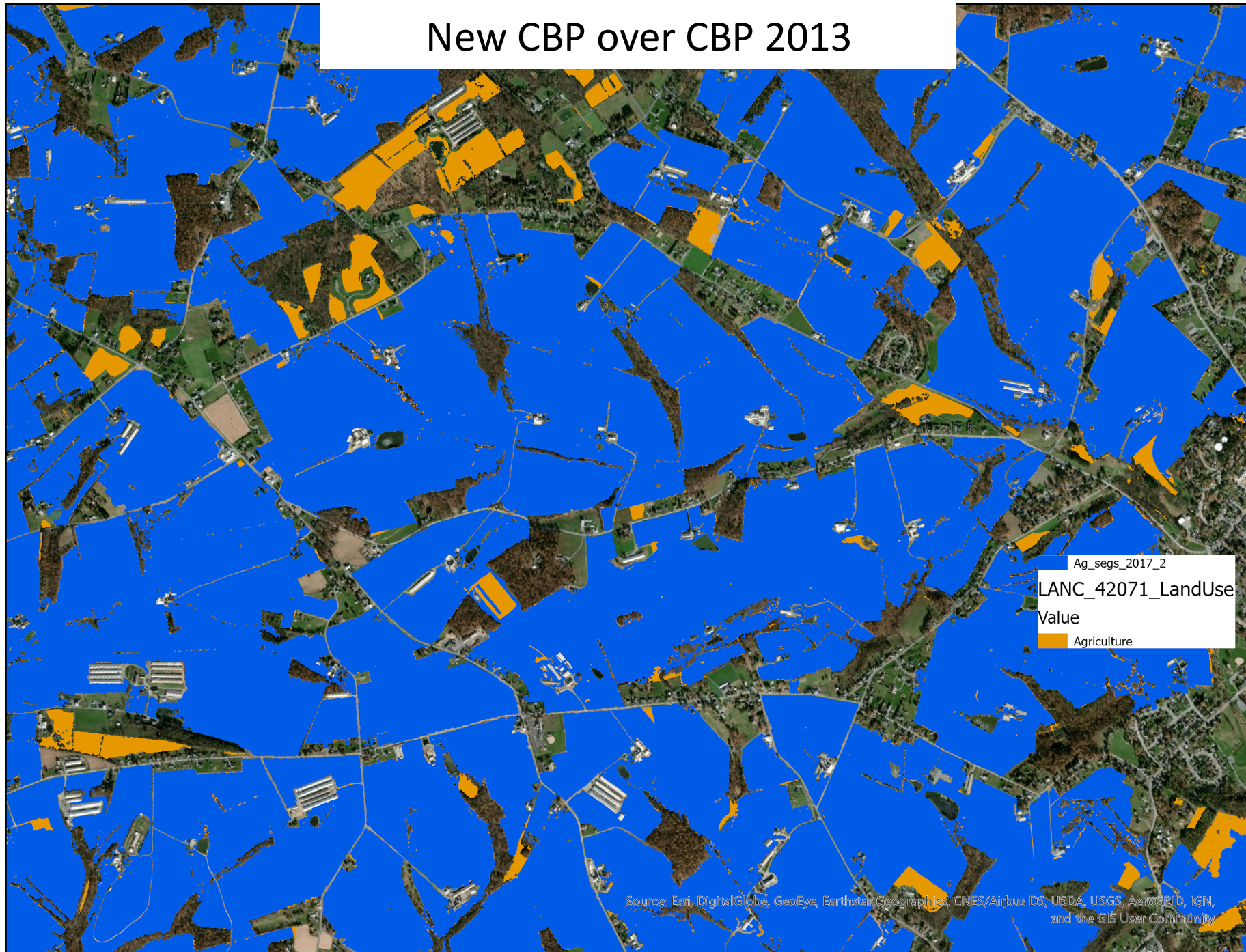
CBP 2013 Ag Land Use



CBP 2013 over New CBP



New CBP over CBP 2013



Source: Esri, DigitalGlobe, GeoEye, Earthstar Geographics, CNES/Airbus DS, USDA, USGS, AeroGRID, IGN, and the GIS User Community

Agriculture in Lancaster County, PA

2012 Census of Agriculture (USDA-NASS)

Farmland	377,807
Cropland	331,973 (315,137 harvested)
Pasture	45,834

2013 High-res Land Use (CBPO)

Farmland	272,655
Cropland	183,272
Pasture	89,382

2017 Census of Agriculture (USDA-NASS)

Farmland	347,906
Cropland	314,913 (292,813 harvested)
Pasture	32,993

2017 Base Conditions (CBPO-CAST 2019beta)

Farmland	313,622
Cropland	277,347
Pasture	36,275

2017 Common Land Units (USDA-FSA)

Cropland	263,963
----------	---------

Trial with 2017 Parcel and Patch data

Farmland	303,132
----------	---------

2014 Land Use (Lancaster County GIS)

Farmland	334,132
Cropland	279,591
Pasture	47,558

2017 Cropland Data Layer (USDA-NASS)

Farmland	253,485
----------	---------

Clearfield County, PA:

Total Farmland

2012 Census of Agriculture:	41,436
2013 High-res Land Use:	115,343
Trial with 2017 Parcel and Patch Data:	67,052

Fauquier County, VA:

Total Farmland

2012 Census of Agriculture:	166,587
2013 High-res Land Use:	119,175
Trial with 2017 Parcel and Patch Data:	135,954

Fauquier County, VA

