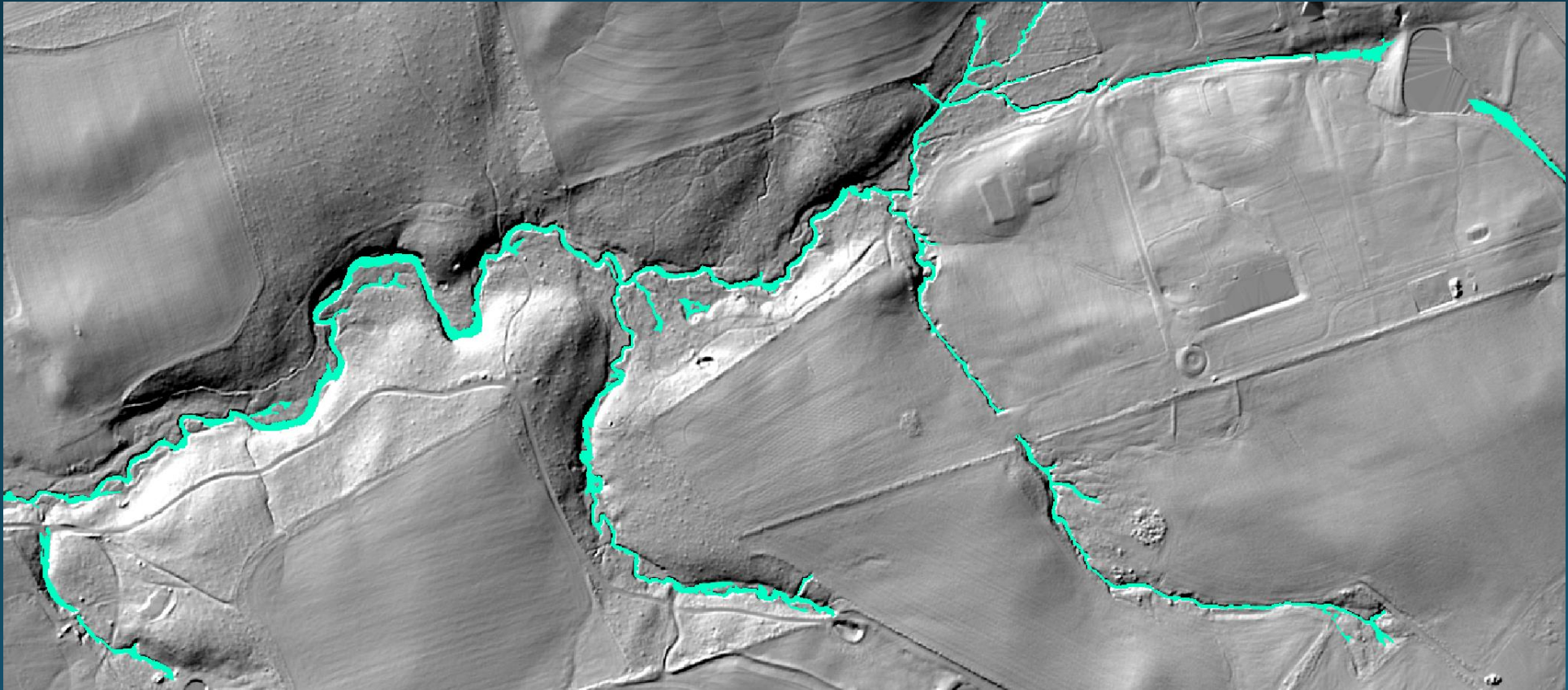


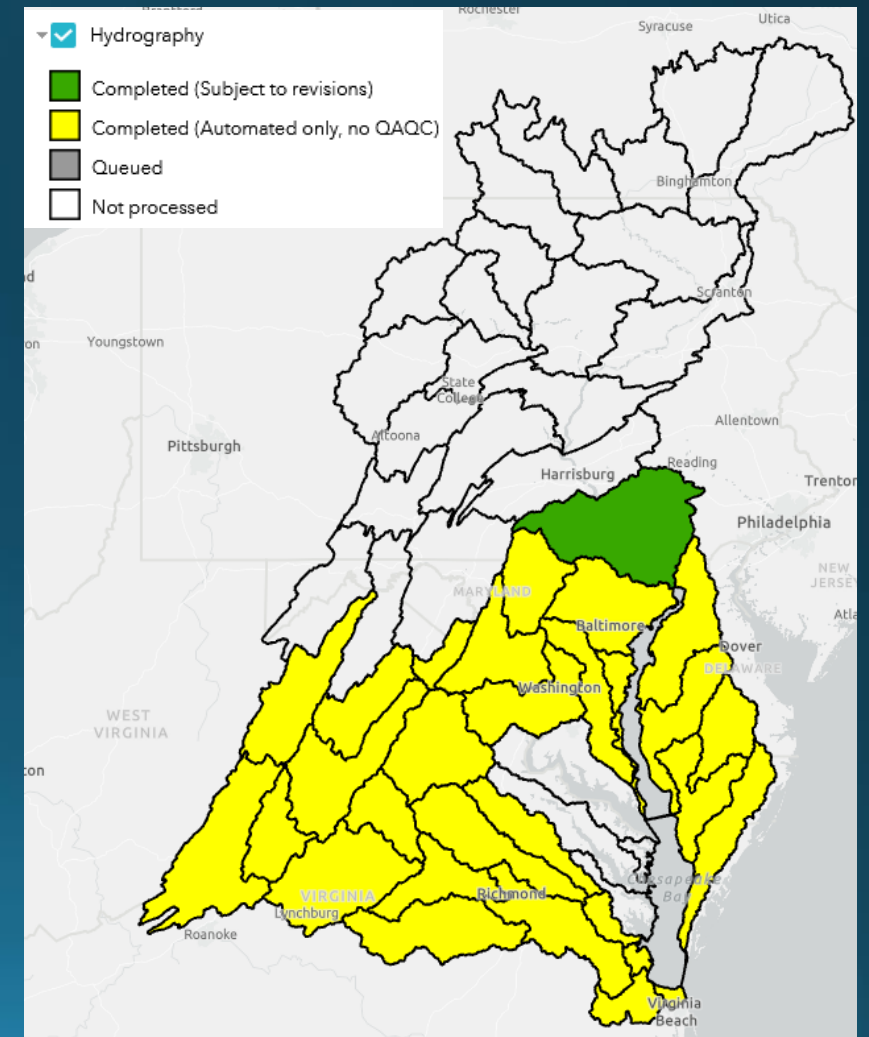
# Objective 2: Hydrography updates

David Saavedra – August 2020 LUWG meeting



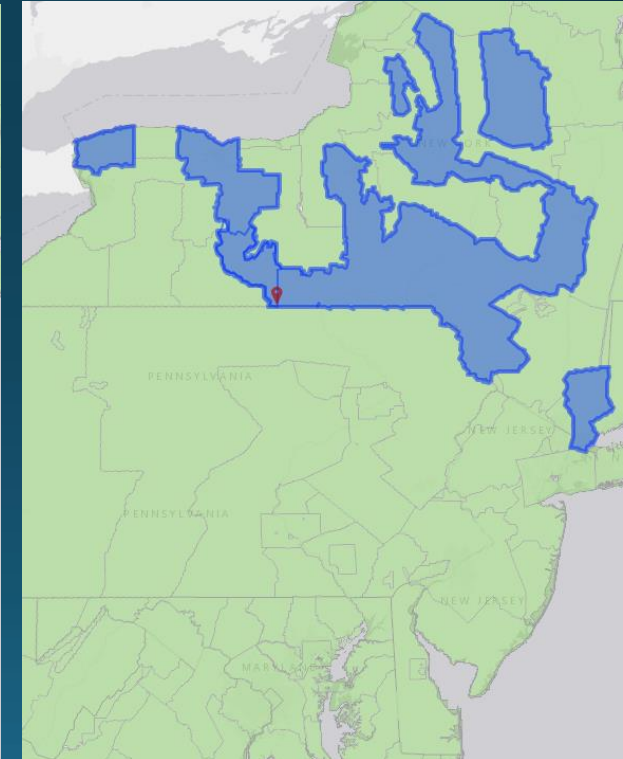
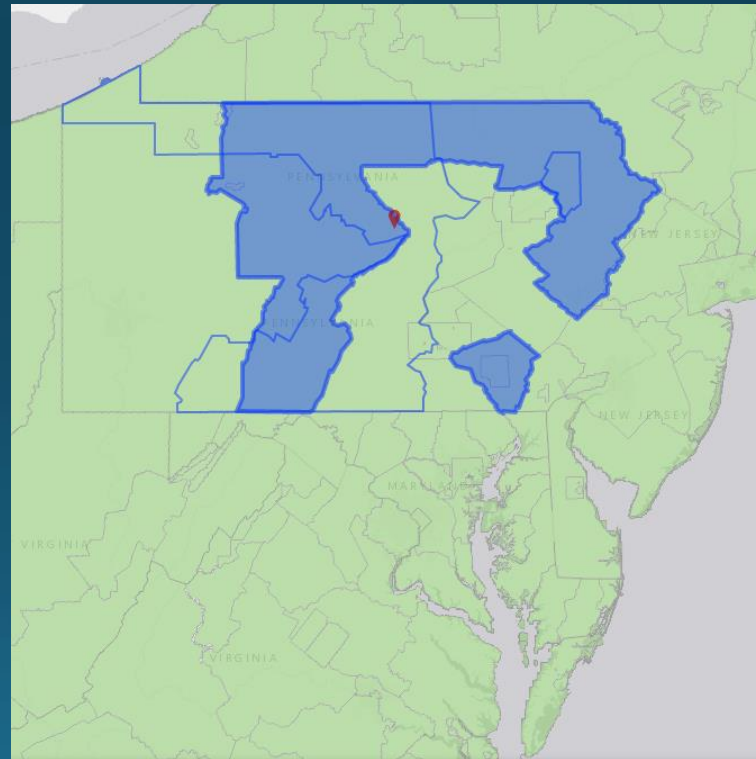
# Production schedule

- Initial channel maps produced on HPCF for all HUC8 watersheds with complete DEM coverage
- Incomplete or outdated DEM coverage for remainder of HUCs not processed



# LiDAR updates

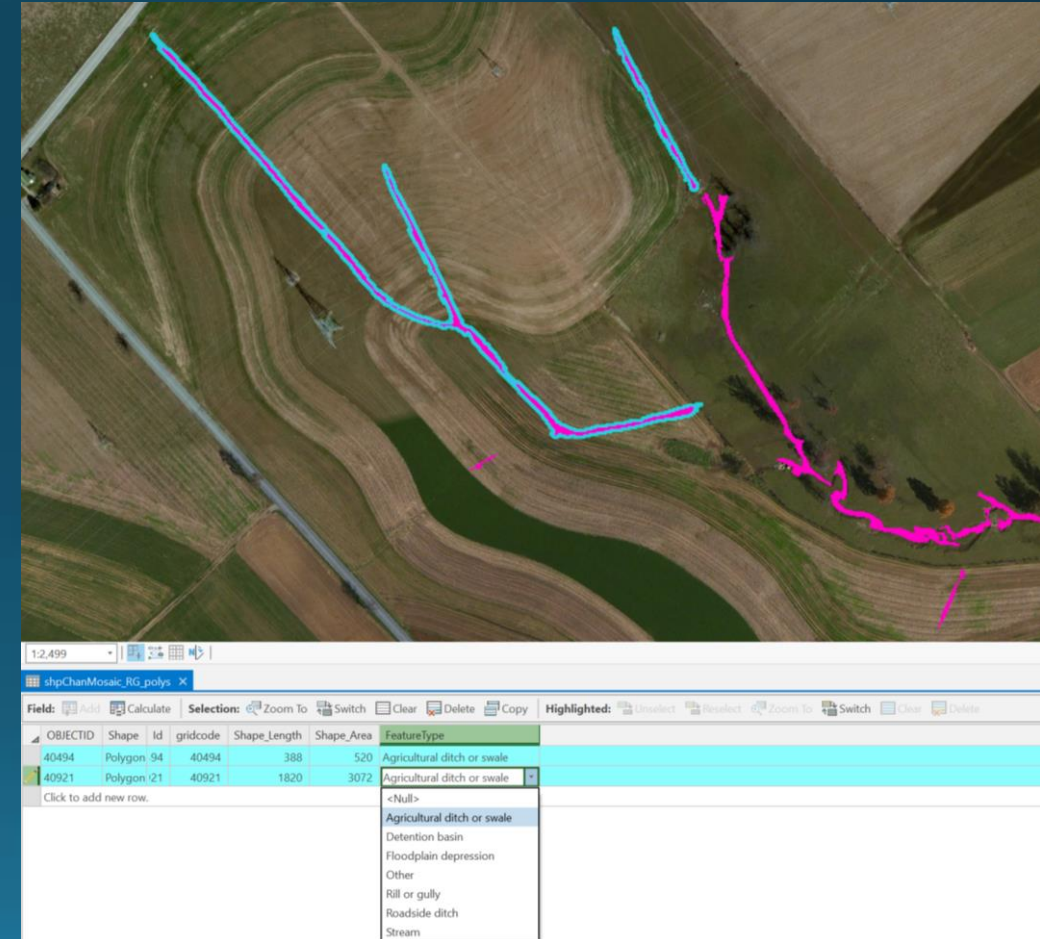
- 2019 North Central PA LiDAR coming soon? – Would complete remainder of MD and PA HUCs
- 2018 FEMA R2 Central NY LiDAR?
- Will decide to process old LiDAR or wait for update by January 2021





# Data refinement

- Manual review in Lower Susquehanna to classify channel-like features in to “stream” and “non-stream” classes (i.e. ditch, gully, detention feature, etc.) to serve as training data for machine learning model
- ML model will assess multitude of layers from initial terrain classification and additional layers to determine probability of a feature belonging to a each class
- Focus reviewers’ attention on features that were not easily classified by computer to expedite review process



# Sharing preliminary data

- MD DNR – Applications for residuum mapping in Blue Ridge
  - “[The valley networks] are proving to be *exactly* what I needed for my current residuum mapping project and couldn't get close to with NHD streams or my own lidar derivatives.”
- VA DEQ/DCR – Applications for livestock exclusion mapping
  - Ability to map streams through pastures with greater accuracy and detail will be very useful
  - Potential to map nutrient/sediment bypass despite livestock exclusion
- EPA Region 3 – Stream Stability Index and [Watershed Resources Registry](#)
  - Detailed/accurate stream locations, bank height and width estimates, valley bottom extents, will be useful

# Questions/contact

- David Saavedra:

[dsaavedra@chesapeakeconservancy.org](mailto:dsaavedra@chesapeakeconservancy.org)

443-321-3610

- Matthew Baker:

[mbaker@umbc.edu](mailto:mbaker@umbc.edu)

410-455-3759