

Objective 1 Update

December 12, 2018 : LUWG

Rachel Soobitsky

Timeline

	Year 1 (18/19)	Year 2 (19/20)	Year 3 (20/21)	Year 4 (21/22)	Year 5 (22/23)	Year 6 (23/24)
QAPP						
Hot Spot Methodology						
Hot Spot LC Updates	2013/14- 2017/18			2017/18- 2021/22		
Land Cover Classifications		2017/18			2021/22	
Land Use Conversions			2017/18			2021/22
Corrections (2013/14)						
Lessons Learned Report						
Accuracy Assessment						
Corrections						
Stakeholder Outreach						

Still in discussion, subject to change.

- Upcoming Deliverables:
 - Complete County **Outreach** and Planimetric Data Collection (Jan. 2019)
- Future Deliverables (June 2019):
 - Finalization of classification scheme with additional classes under consideration:
 - Deciduous vs evergreen trees, timber harvests, vegetation height, cover crops, center-pivot irrigation, vineyards, nurseries, greenhouses, orchards, solar fields, chicken houses, ponds
 - **Hot Spot** Land Cover Updates



Hot Spots

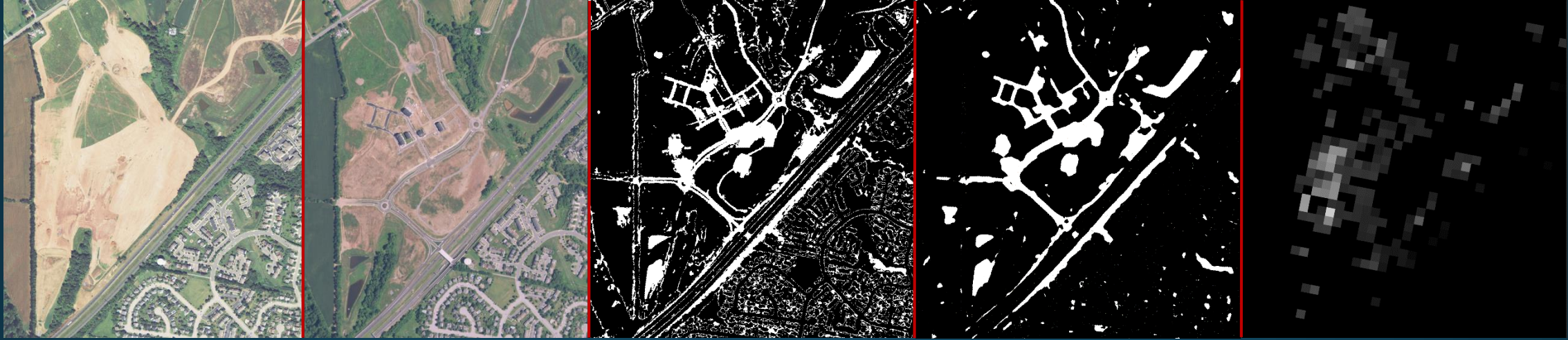
2013

2015

MSFT raw

MSFT Focal (15 pixel)

LCMAP change magnitude



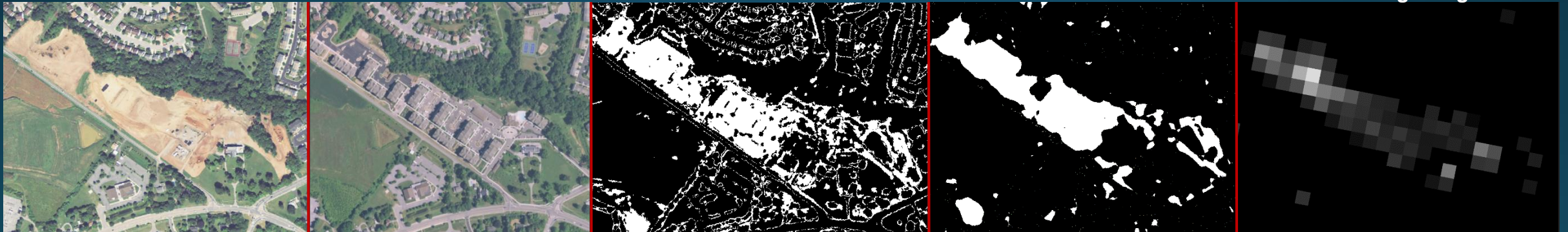
2013

2015

MSFT raw

MSFT Focal (15 pixel)

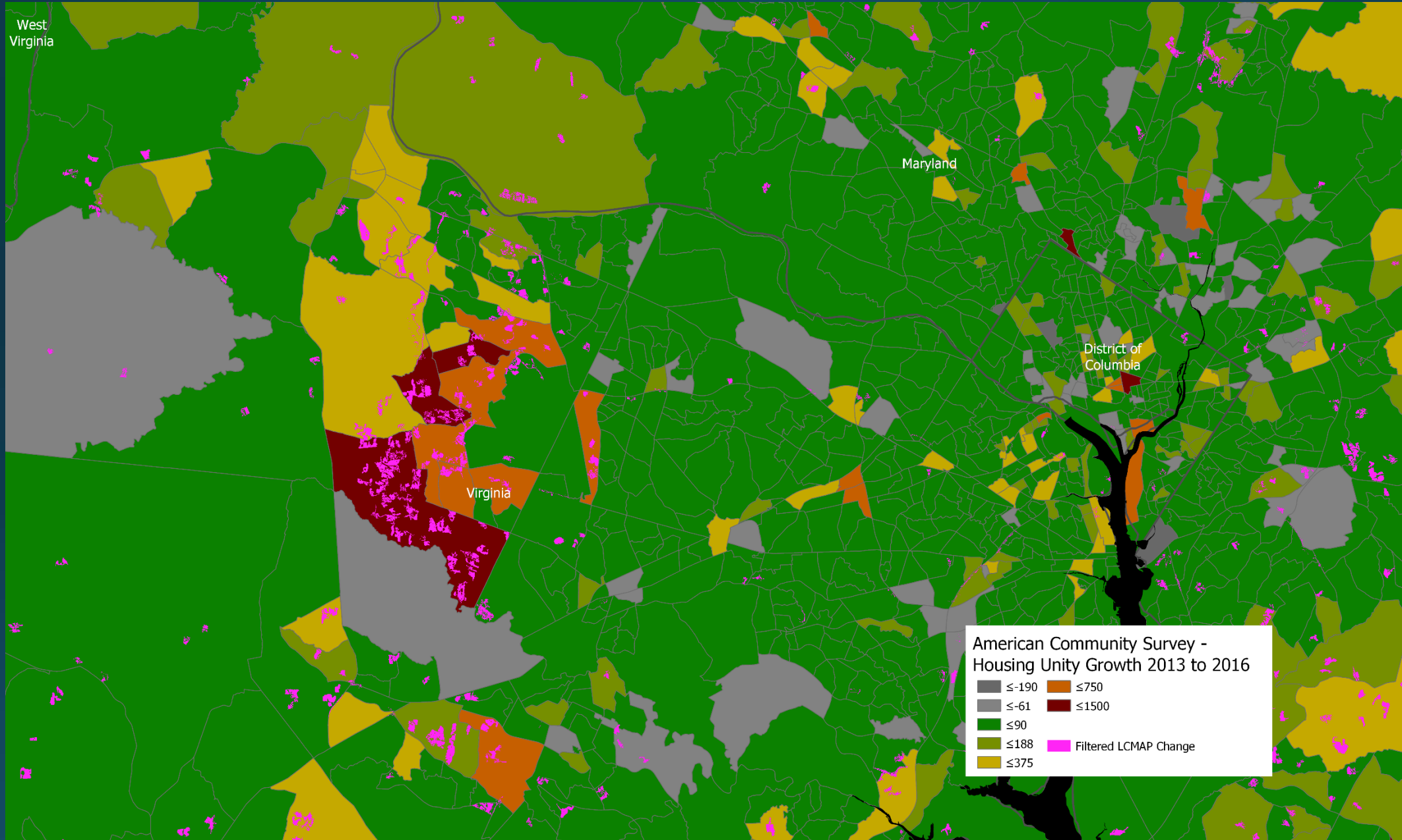
LCMAP change magnitude



Hot Spots



Hot Spots



Outreach

- Emailed counties/municipalities in Chesapeake Bay watershed (as of 12/12/18):
 - MD - 22/24 counties responded
 - DC – in contact with DC OCTO, all datasets online
 - DE – 2/3 counties responded
 - WV – 8/14 counties responded
 - VA – 39/98 counties/municipalities
 - PA – 10/43 counties responded
 - NY – 7/20 counties responded
- Don't have email for the following:
 - Mineral County, WV and City of Alexandria, VA (has an open GIS Data site).
- Future: re-email and/or call above, plus Statewide organizations such as Dept. of Environment, Dept. of Planning, etc.

Outreach

- Presentations at State GIS Organizations:
 - MSGIC- October 17th
 - DC OCTO- October 25th
 - MD iMAP- November 2nd
 - DGDC- November 8th
 - Central PA GIS Day- November 14th
 - NYS GIS Association Professional Development Committee Webinar – Dec. 11th
- Upcoming:
 - WV Rivers: Safe Water Conservation Collaborative Meeting- Jan. 24th
 - VA- In touch with Joe Sewash at VITA to set up a webinar

Use Cases

- Lycoming County, VA-
 - Use data for **MS4 analysis** required for the Chesapeake Bay Pollutant Reduction Plan updated over past 1.5 years
- Hampton Roads Planning District Commission, VA-
 - Interest in using updated data for variety of projects including **regional green infrastructure work**
- Page County, VA-
 - Building **county land use** data using our previous land cover dataset
- Northumberland, PA-
 - Want our updated county level datasets to use towards updating their **County Comprehensive** plan
- Potter County, PA-
 - Use data for **comprehensive plan**
- MD Department of Planning-
 - Now working for Howard County, MD. Heavily utilized land cover- particularly for **watershed and studies relating to the health of the Chesapeake and its tributaries** in MD

Questions?

- rsoobitsky@chesapeakeconservancy.org
- jczawlytko@chesapeakeconservancy.org