

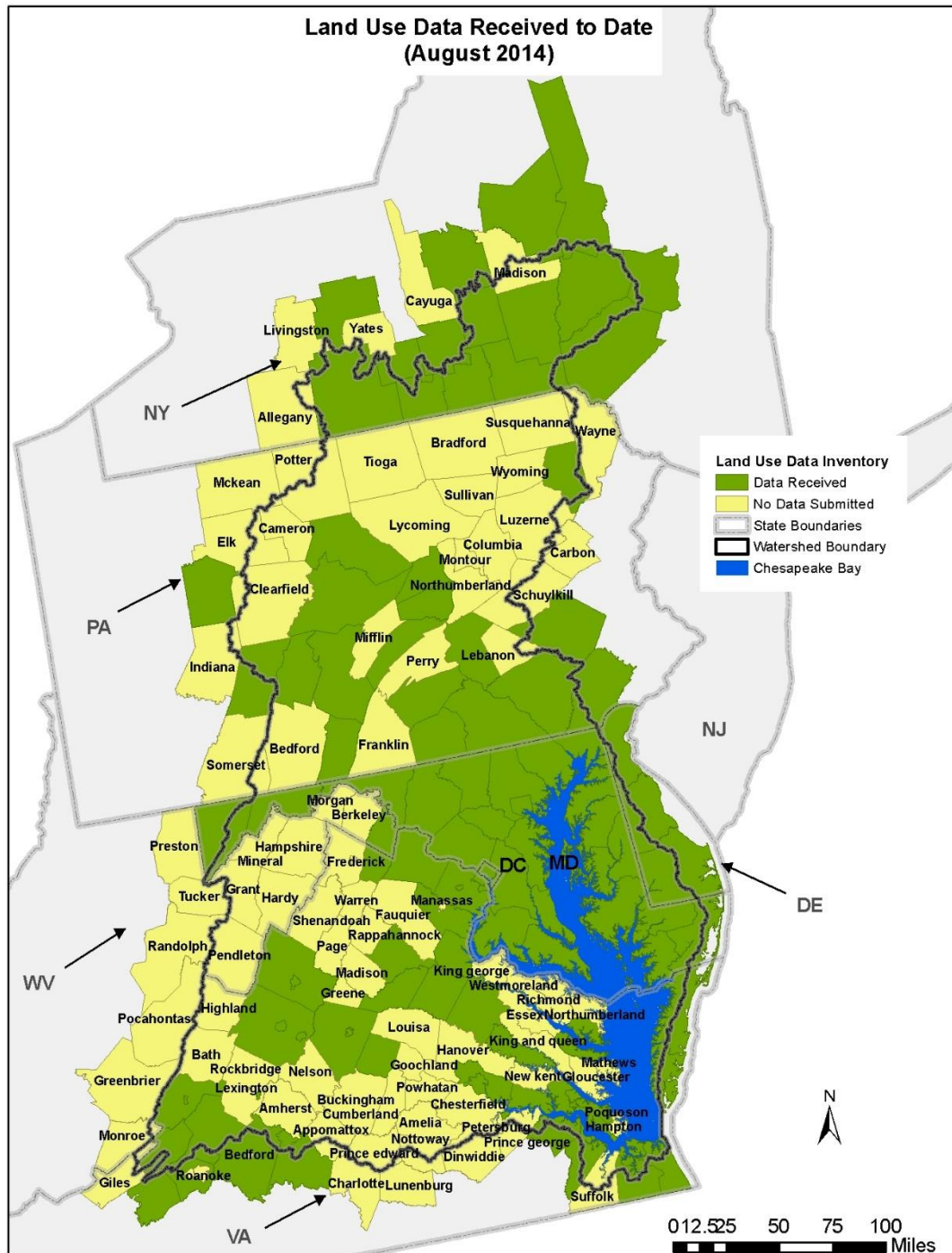


**Chesapeake Bay Program**  
*A Watershed Partnership*

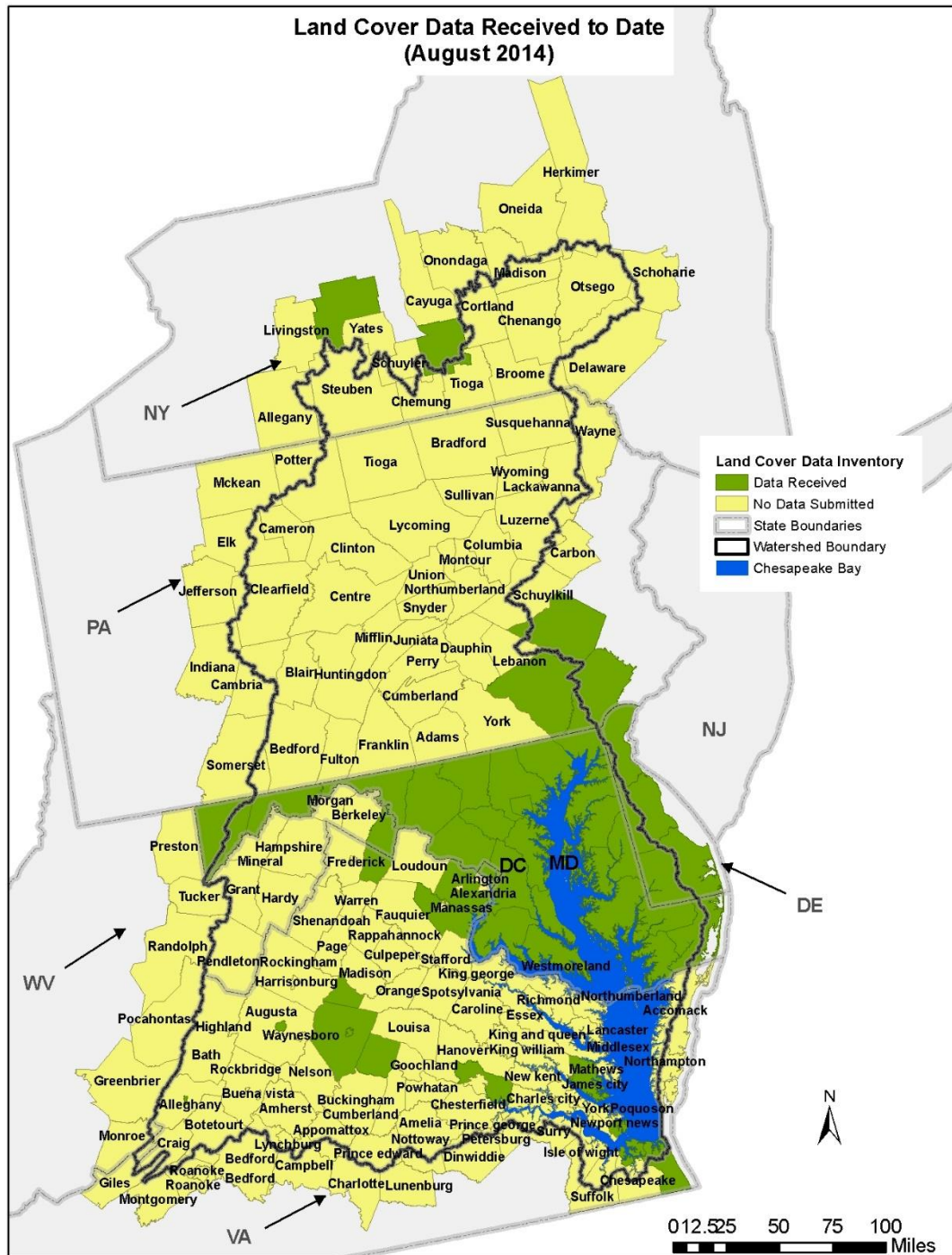
# P6 Developed

**Peter Claggett, U.S. Geological Survey**  
**Quentin Stubbs, U.S. Geological Survey**

# Land Use Data Received to Date (August 2014)

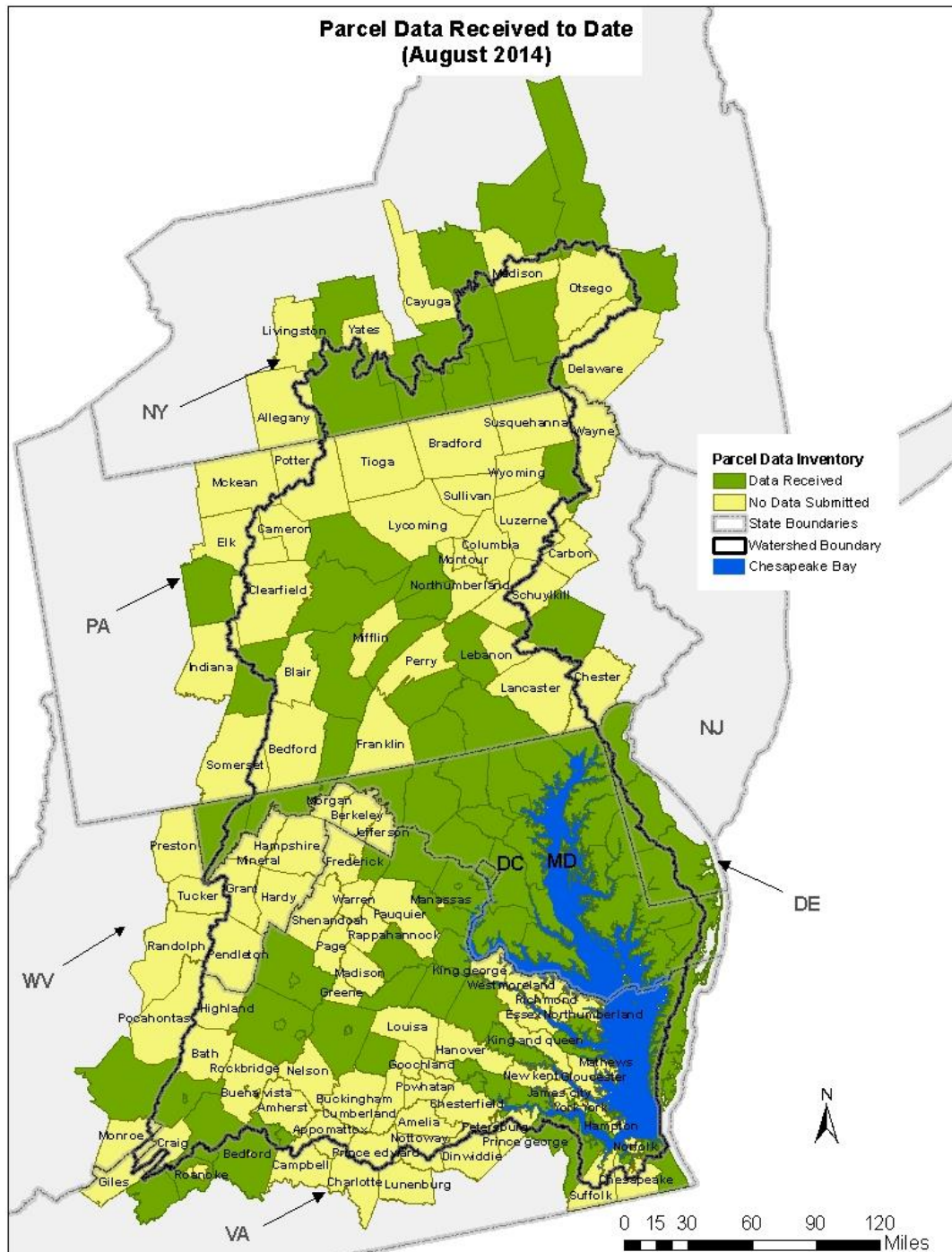


# Land Cover Data Received to Date (August 2014)





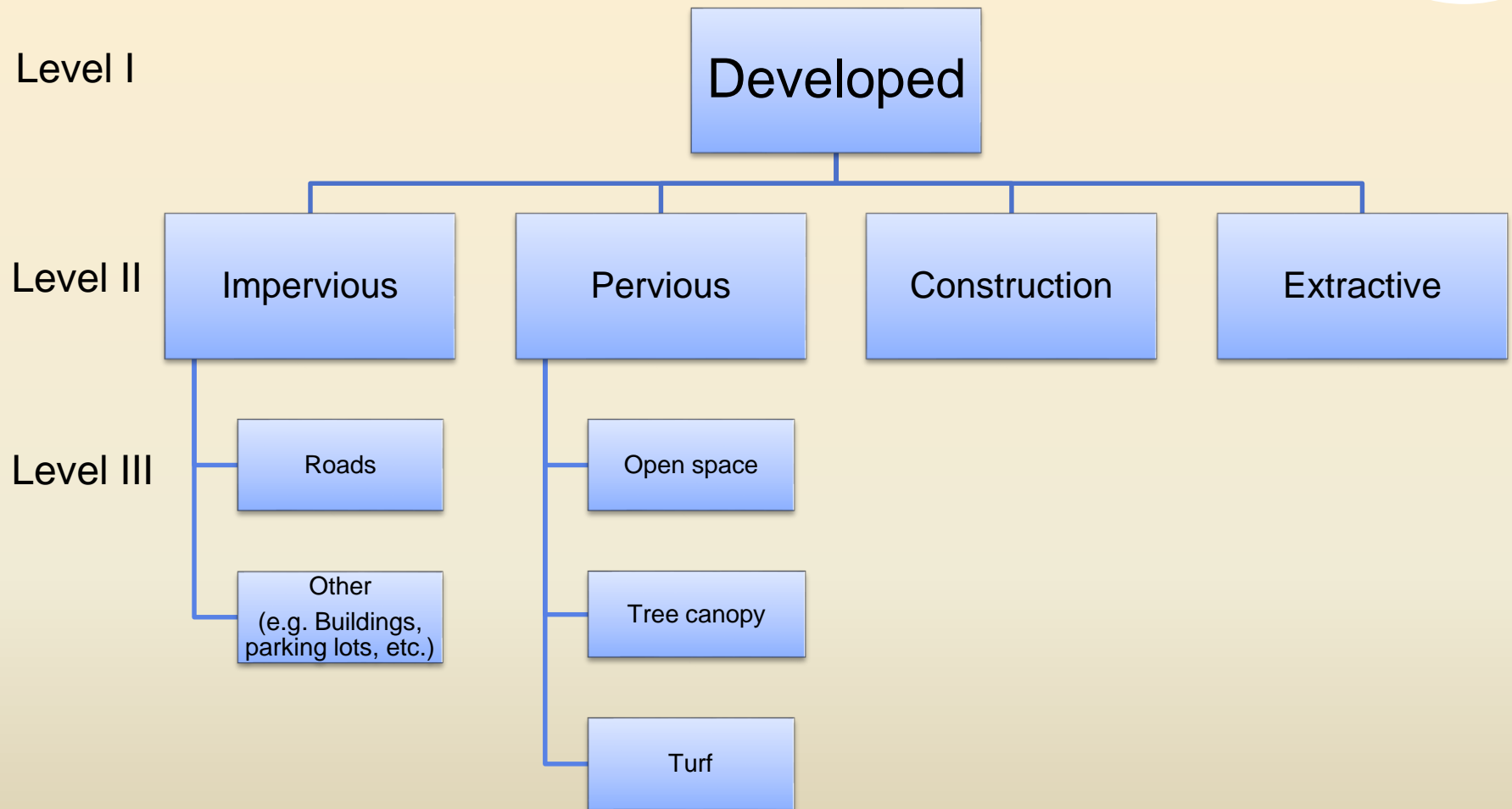
# Parcel Data Received to Date (August 2014)





# Proposed Developed Phase 6 Land Uses

Developed



# Impervious Data Sources & Issues

1. Planimetric data (i.e., structures, roads, parking lots, etc.)
  - A. Most accurate depiction of impervious cover
  - B. But may be:
    - Out-of-date
    - Missing some types of impervious cover (e.g., driveways, sidewalks)
2. High-res land cover data (i.e., impervious, tree canopy, herbaceous)
  - A. Very accurate if mapped leaf-off imagery and LiDAR
  - B. But may be:
    - Out-of-date
    - Mapped with leaf-on imagery; canopy obscures roads and structures.
3. Moderate-res (30m) sub-pixel impervious cover
  - A. Captures most large patches ( $> \frac{1}{2}$  acre) of impervious cover; available for 2001 and 2010.
  - B. But:
    - Misses small & narrow structures and those obscured by canopy including rural roads, low-density residential areas and farmsteads are missed.

## **Pervious developed**

**Pervious developed  $\neq$  forest, wetland, water, or impervious surfaces**

### **Pervious Data Sources:**

1. Local Land Use  
i.e., residential, commercial, industrial, institutional, other developed
2. High-res land cover data  
i.e., forest, water, and impervious surfaces
3. Census Blocks (housing density)
4. Road density
5. Ancillary data on institutions, golf courses, etc.
6. NWI wetlands, NHD-H streams and waterbodies



# Rural Montgomery County Maryland





## “Developed” Area (high-res)





### “Developed” and “Natural” Areas (high-res)

Montgomery County 2007 High-res Land Cover	= 67,357 acres of “agriculture”
2007 Ag Census	= 67,613 acres of Land in farms

**= 67,357 acres of “agriculture”**

## 2007 Ag Census

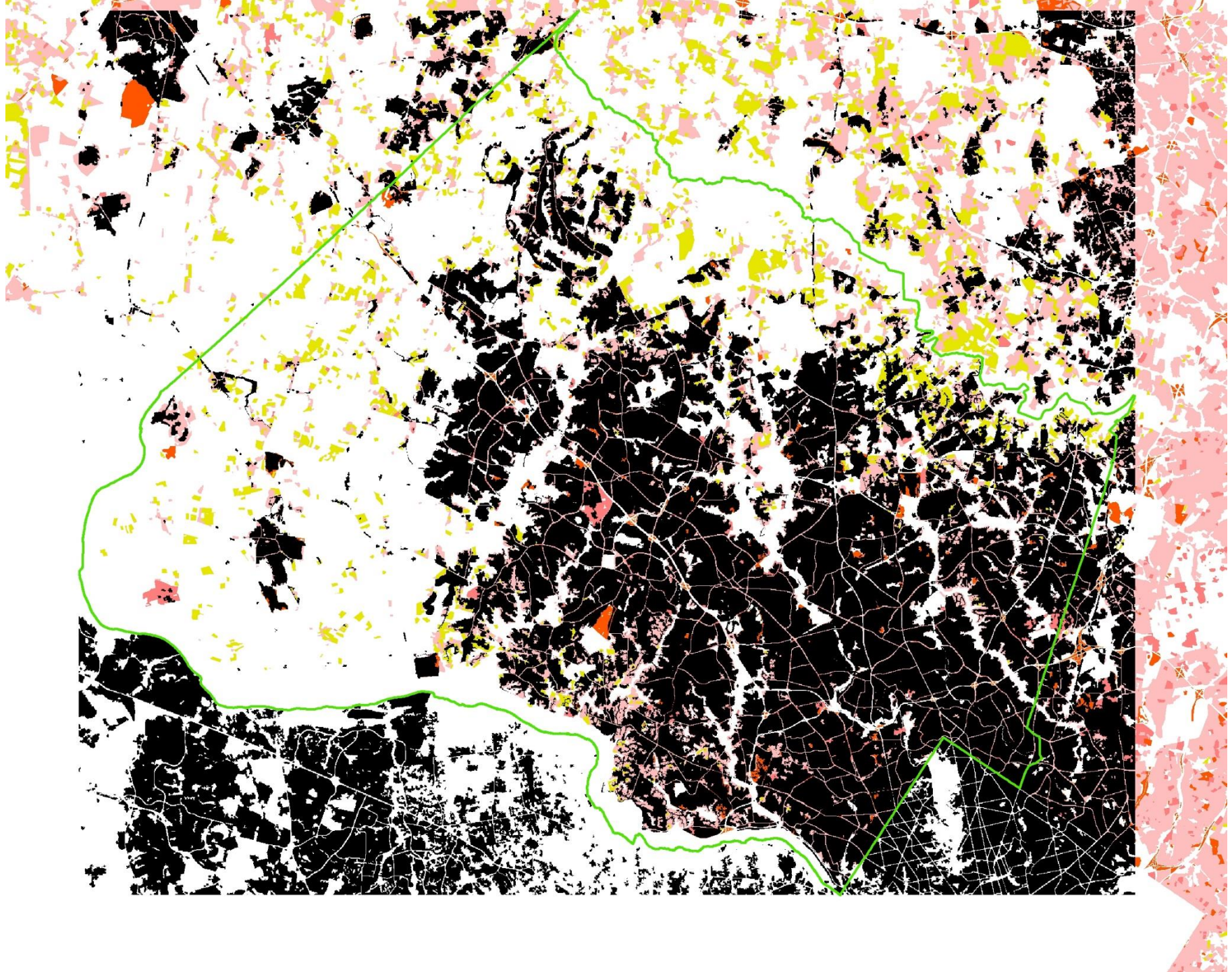
**= 67,613 acres of Land in farms**



Low-density areas missed with moderate-resolution data

Low-dens Res.





# Proposed Phase 6 Definitions of “Forests” and “Urban Tree Canopy”

## 1. Forests

### A. Developed areas

- Un-fragmented patches of trees  $\geq 1$  acre (circle)

### B. Rural areas

- All trees

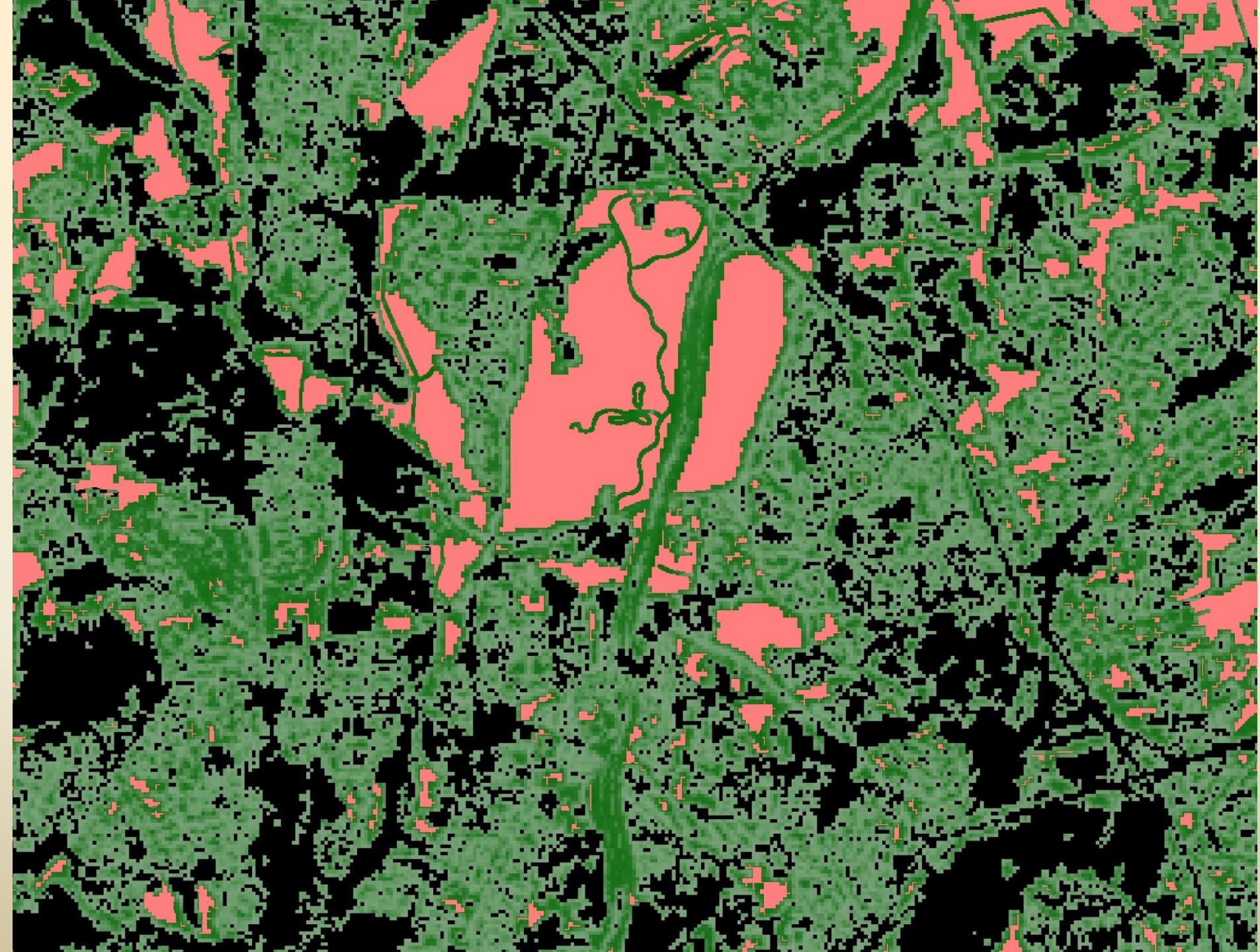
## 2. Tree canopy

- In patches  $< 1$  acre within developed areas

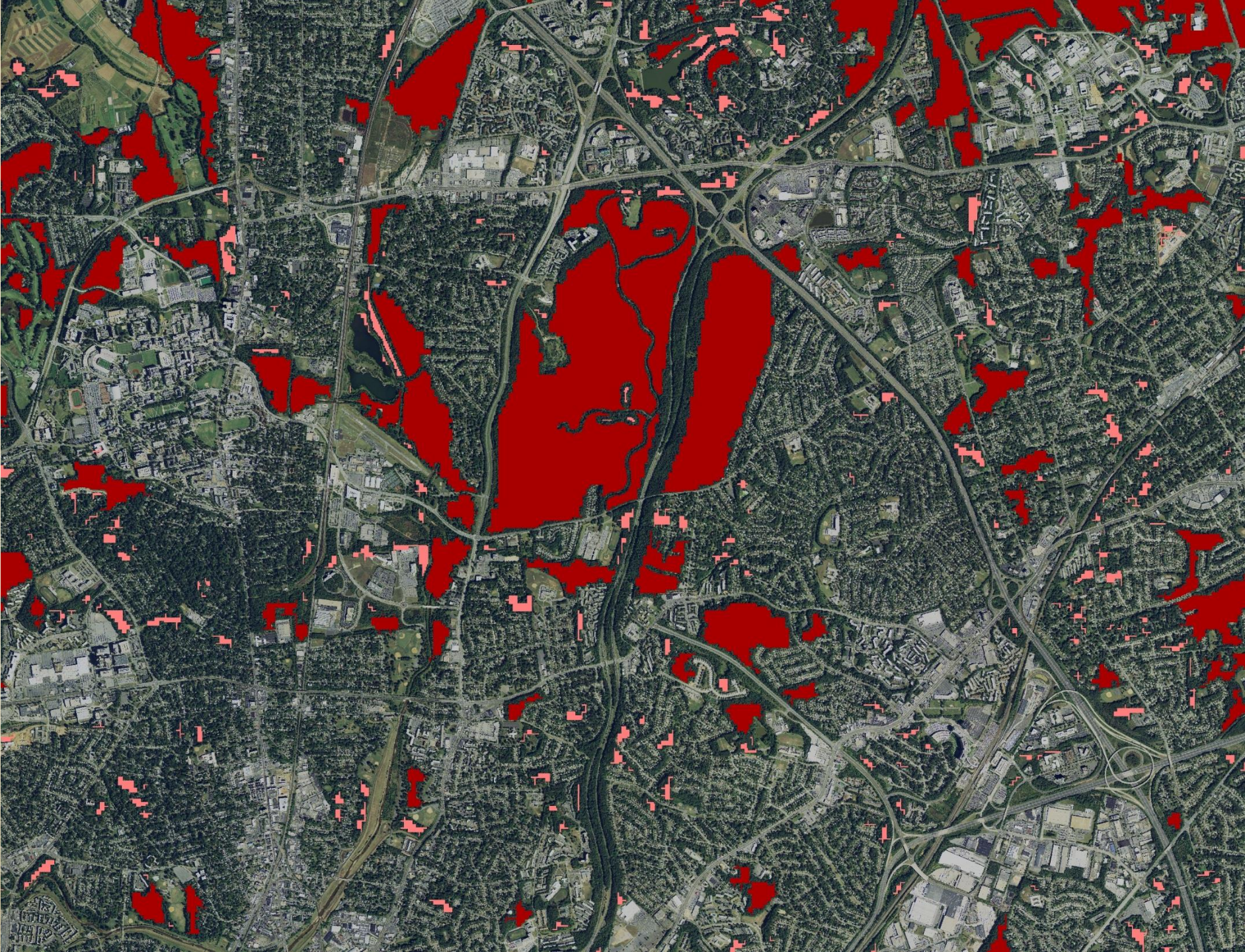




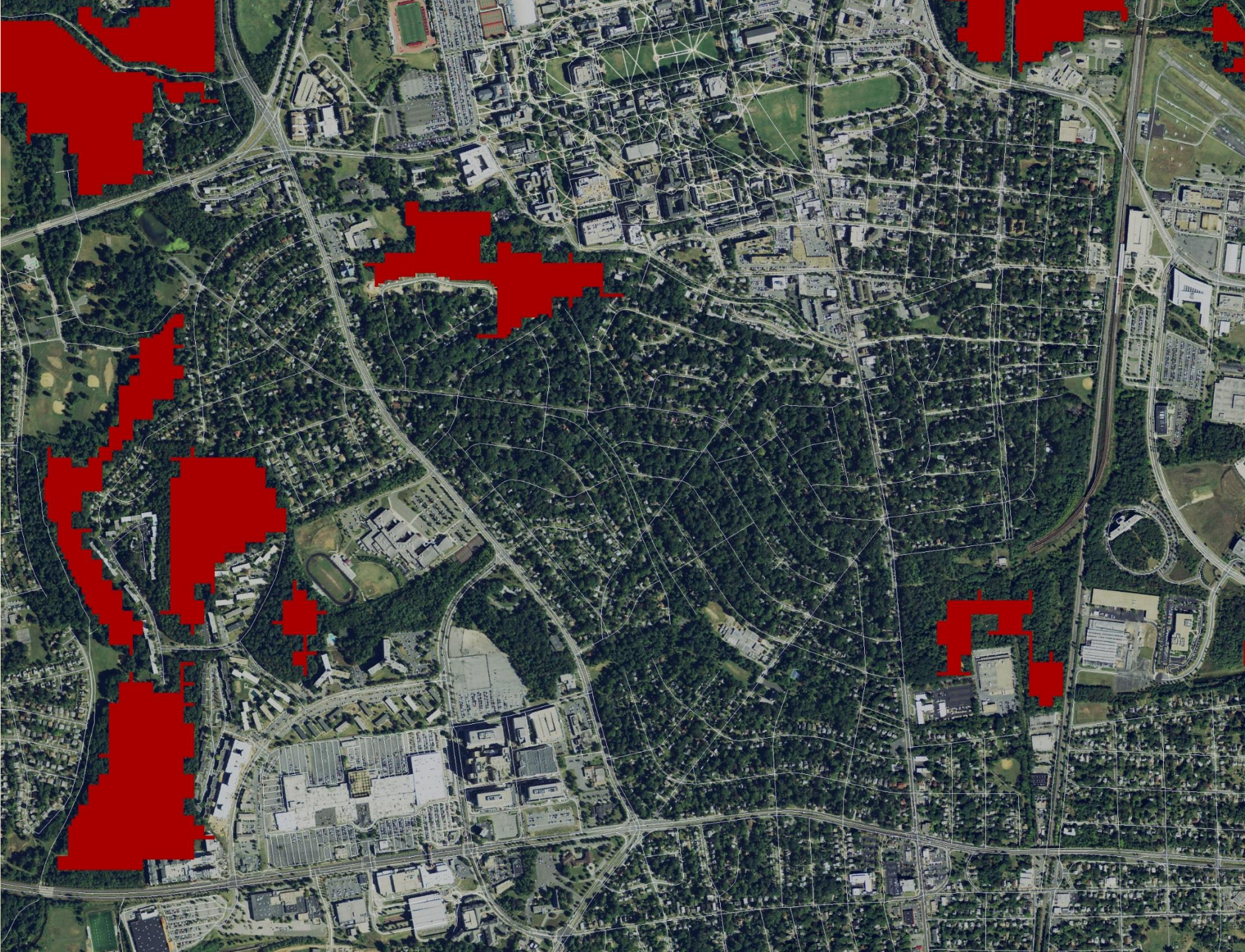








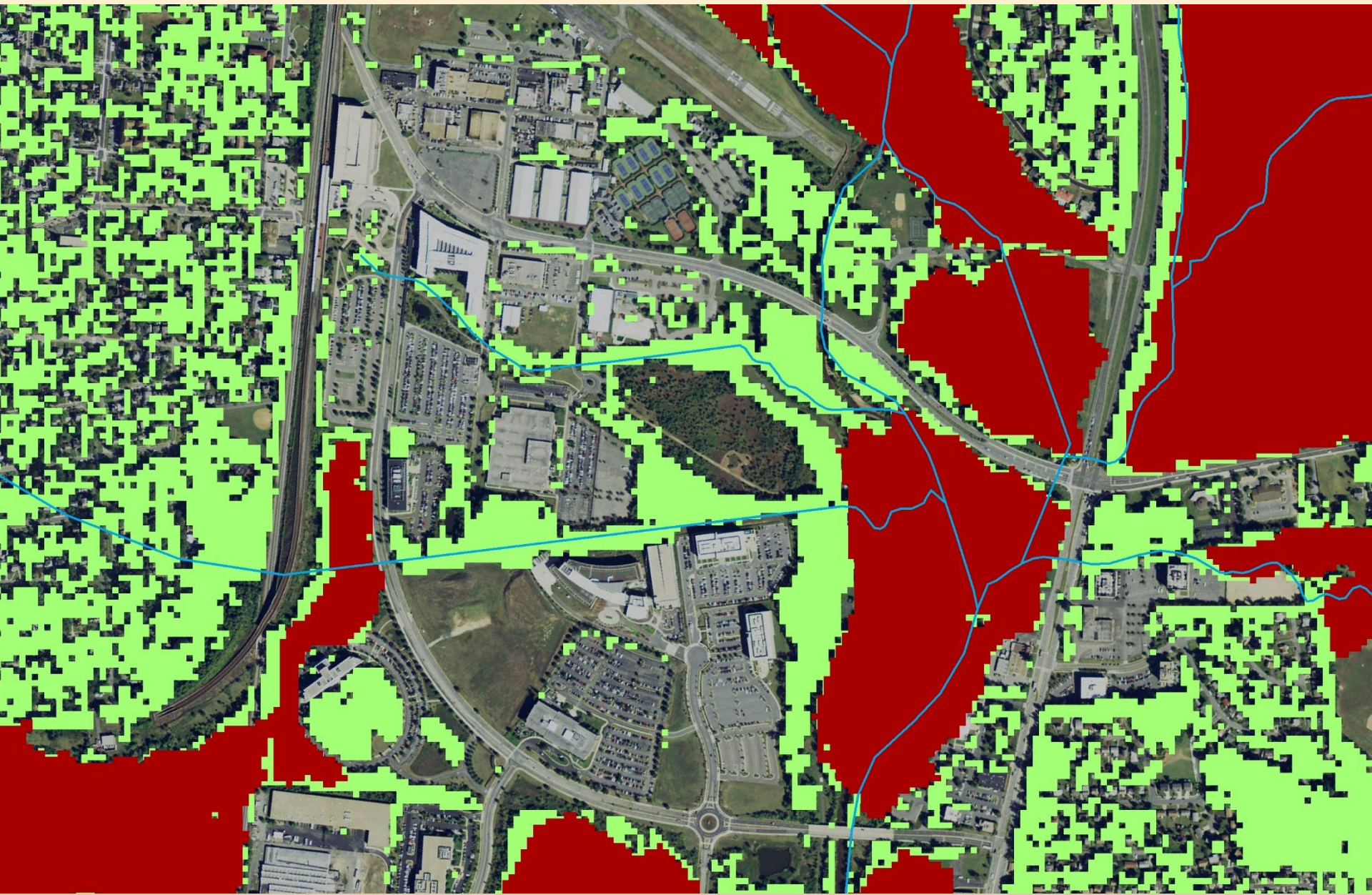
















**Chesapeake Bay Program**  
*A Watershed Partnership*

# Phase 6 Land Use

**Peter Claggett, [pclaggett@usgs.gov](mailto:pclaggett@usgs.gov)**  
**Quentin Stubbs, [qstubbs@usgs.gov](mailto:qstubbs@usgs.gov)**