

CBPO Updates

NOVEMBER 18TH, 2016

RENEE THOMPSON

A solid green horizontal bar spanning the width of the slide at the bottom.

Welcome Katherine!

Katherine is a 2014 graduate from Washington College where she earned a B.S. in Environmental Science. Since graduating, she has worked for Washington College's GIS Lab, Chesapeake BaySavers, and Acadia National Park. Katherine is currently pursuing a Master's in Environmental Science from Towson University and is very excited to be working with the Healthy Watershed's team.



Wink Hastings 1947-2016



<https://www.lifeposts.com/p/milestone/1114/wink-hastings-memorial/lifestory/>

Integrated Monitoring Network Workgroup Meeting

- Renee and Katherine presented to this CBP workgroup that is part of the STAR team; they are working with CBP Goal Teams to assess existing networks or identify gaps that can be utilized to assess the new outcomes.
- Angel Valdez MDE provided an update related to their process for determining the status and overall assimilative capacity of MD Tier II streams and intersecting catchments.
- **HW GIT Current Status / next steps:**
 - States will work to come up with their own assessment framework
 - CBP Staff develop a database which as a starting point will list the state-identified healthy waters and watersheds. Send to each Jurisdictional representative
 - Jurisdictional representatives provide GIT with criteria used to determine whether watershed or water are “sustained” and fill out the rest of the information on the database
 - Coordinator creates a status map using data provided from Jurisdictions
 - CBP Staff develop an interim tracking protocol modeled on other jurisdictions to assess progress toward goal in lieu of a jurisdiction providing it directly.

Communications Workgroup Meeting

November 3rd meeting summarizing the key communications products related to GIT funding:

- A brochure on best practices will be created so other organizations can duplicate the project. (WV Road Sediment Project)
- Tabular dataset of best practices jurisdictions (Land Use Options, best practices project)
- GIS dataset with key attributes related to those jurisdictions (Land Use Options, best practices project)
- The project sponsors will work extensively through the RRBC, with local government officials within the Basin, as well as LGAC and other GITs to develop the tool box of criteria, incentives, etc. that could be used in land use policy and zoning situations to accurately identify and assign appropriate values to high conservation value forest lands. The forest land TMDL best management practice credit would be the driver but only one of what could be a package of incentives available. (Forestland retention project)
- Negotiate with local officials to get land use policies and decisions that retain forestland in healthy watersheds implemented
- Includes the creation of a toolbox incentive that can be used to stimulate forestland retention throughout the watershed

DRAFT Bay Barometer Text – need lunchtime volunteers to rework this!

Healthy Watersheds

News Blurb:

- **Option 1:** A study from Duke University found that inactive coal ash impoundments in Virginia are leaking toxic chemicals into nearby groundwater and surface waters. The Southern Environmental Law Center has called for the cleanup of two coal ash ponds in the state, as well as stricter safeguards to protect local drinking water. ([Source](#))
- **Option 2:** The Chesapeake Bay Program's Healthy Watersheds workgroup works with the U.S. Army Corps of Engineers (U.S. ACE) to ensure their reservoirs and recreational facilities are protected, preserved and significant ecological resources restored. In 2016, U.S. ACE released their Chesapeake Bay Comprehensive Plan to increase the importance and criticality of the role they play to improve the health of the Chesapeake Bay. The Plan directly contributes to the protection and restoration goals of the 2014 Chesapeake Bay Watershed Agreement and 2009 Executive Order 13508.

Outcome: Ensure 100 percent of state-identified currently healthy waters and watersheds remain healthy

Cross Goal Team Project: Mapping Geographic Areas that Benefit Multiple CBP Outcomes

Goals: Maximum benefit to living resources • Restoration and conservation • Consider future threats • Current partner efforts • Joint planning in places with greatest benefit



More strategic and effective

More effectively share resources to make progress on inter-related outcomes

- Actions between outcomes
- Places where efforts can be concentrated
- Aligning partner activities
- GITs, Implementers, MB, PSC, STAR

Benefits

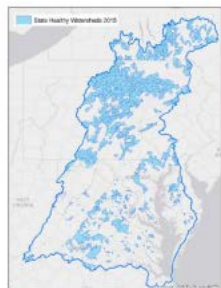
- Strategic
- Increase interaction
- Enhance effectiveness
- Communicate value



	Data Layer	Topics
GIT 1	Priority Living Resources Areas (surrogate for Fish Habitat) Oyster Restoration Areas National Fish Habitat Action Plan (risk of current habitat degradation)	Conservation Restoration
GIT 2	Regional Conservation Opportunity Areas Index of Ecological Integrity (NALCC) Brook Trout Black Duck Energetics Model	Conservation Conservation or Restoration Conservation Conservation?
GIT 3	SPARROW Nutrient Loads Waters Impaired for PCBs Long Term WQ Monitoring Trends Water Quality Standards Attainment	Restoration Restoration Restoration Restoration
GIT 4	Healthy Watersheds Protected Lands	Conservation Protection Overlay
GIT 5	Public Access Land Protection Priorities (via Chesapeake Conservation Partnership)	Conservation Conservation
Climate	Sea Level Rise/Inundation Flood Hazard Risk (riverine) Wetland Adaptation Areas	Threat Threat Threat/ Conservation
Diversity	High Poverty Ethnic Minority Public Health Indicator ((e.g. cancer rates, asthma, birth defects))	
Land Change	CB Land Change Model	Threat

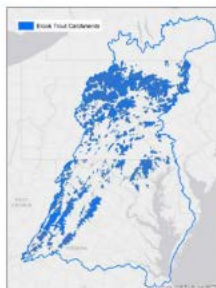
Example 1: Brook Trout

Healthy
Watersheds



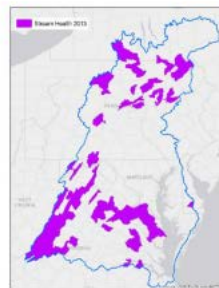
+

Brook
Trout



+

Stream
Health



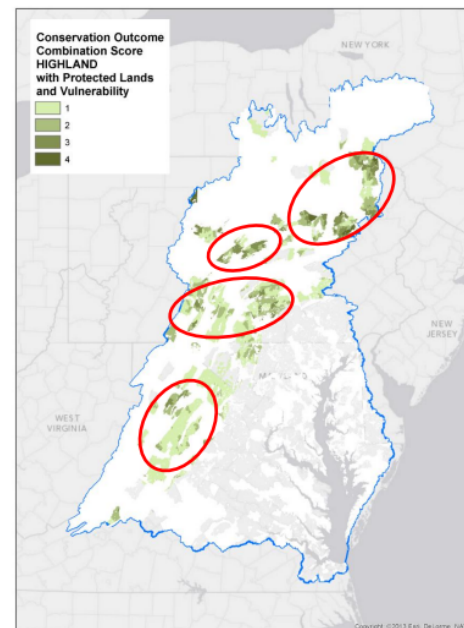
+

Conservation
Partnership

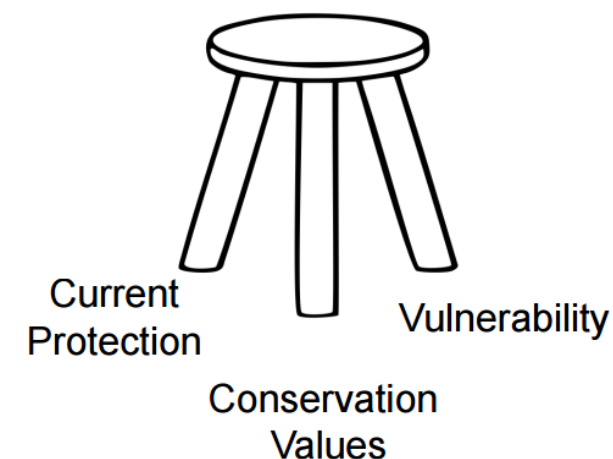


= ???

Example 1: Brook Trout



Number of Overlapping
Priority Areas
**Accounting for
Existing Protection
and Vulnerability**



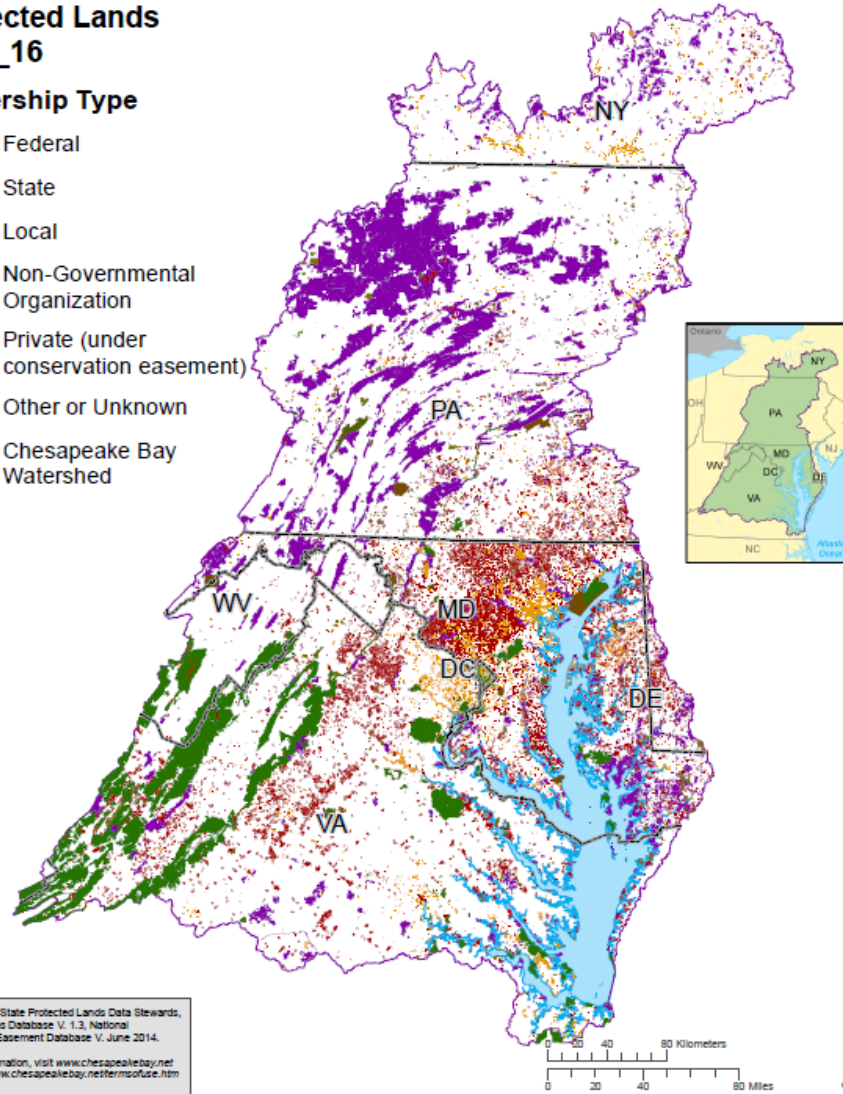
Protected Lands in the Chesapeake Bay Watershed 2015_16



Protected Lands 2015_16

Ownership Type

- Federal
- State
- Local
- Non-Governmental Organization
- Private (under conservation easement)
- Other or Unknown
- Chesapeake Bay Watershed



Data Sources: State Protected Lands Data Stewards,
Protected Areas Database V. 1.3, National
Conservation Easement Database V. June 2014.

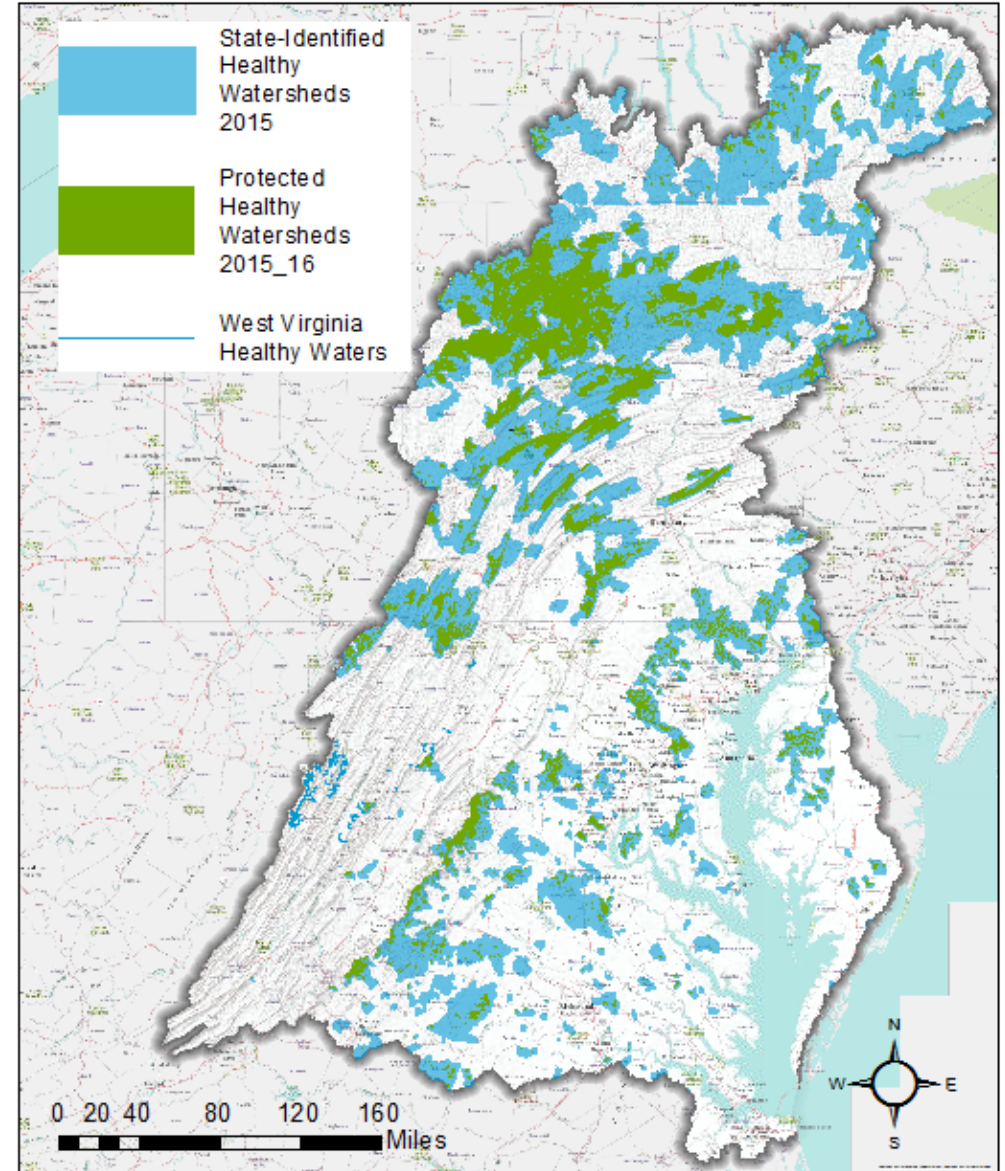
For more information, visit www.chesapeakebay.net
Disclaimer: www.chesapeakebay.net/terms-of-use.htm

Created by RLT, 10/05/16

UTM Zone 18N, NAD 83

State Identified Healthy Watersheds

With 2015_16 Protected Lands



Important Meetings

- EC Meeting on 10/4

- PSC Meeting on 10/26

- Preparing for Bay TMDL Midpoint Assessment and Phase III WIP Decisions and Policymaking 2016-19
- Environmental Finance Symposium Report Recommendations
- Biennial Programmatic Review

WQGIT Meeting 10/24-10/25, 11/14

- Phase III WIP Planning Targets
- Understanding the Effect of Conowingo Dam on WQ
- Local Area Planning Targets
- Climate Change Assessment Procedures

- Habitat GIT Meeting 11/14

- CAC Meeting 11/16-11/17

- Climate Change Discussions

- MB Meeting 11/17

- Biennial Strategy Review System
- TMDL Midpoint Assessment Requests: Phase III WIP Planning Targets Methodology, Conowingo Allocations, Local Area Planning Goals, Climate Change Assessment Procedures
- York County Stormwater BMP Calculator Tool

Biennial Strategy Review System

