

An aerial photograph of a vast, dense green forest. A river or stream winds through the lower portion of the image, reflecting the sunlight. The forest is thick and covers rolling hills, with some small clearings visible. The overall scene is lush and natural.

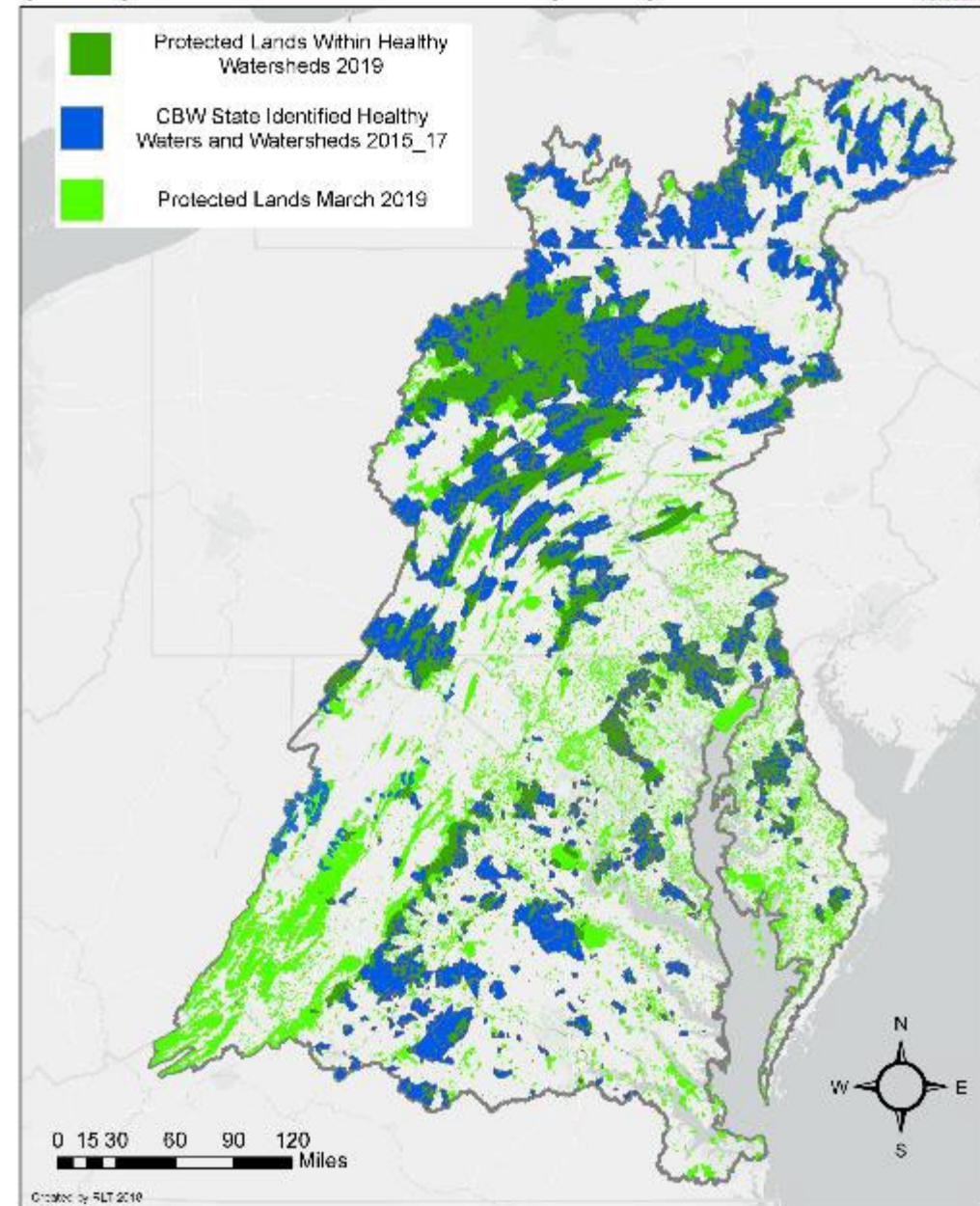
# Advancing Healthy Watershed Protection

HWGIT February Meeting, Feb 13th, 2023



# Questions about Protecting Healthy Watersheds

- Are states and partners helping to advance protection within the watershed? Is this protection being guided by or to healthy watersheds?
- Are there any stories of success related to protecting healthy watersheds?
- Should we be considering advancing healthy watersheds for long term conservation protection as jurisdictions look toward conserving 30% of the watershed by 2030?





# Opportunities to Collaborate?

The protected lands Outcome Logic and Action Plan has several areas that could overlap with our work

**2.3: Connect members of the land and water conservation community with training, technical assistance, and initiative support for messaging and communications about land conservation.**

- Smart Growth network to help with feedback and communication?

**4.1: Assist partners in developing and evaluating options for improving policies to avoid and mitigate the impacts of development projects on protected and valued resource lands.**

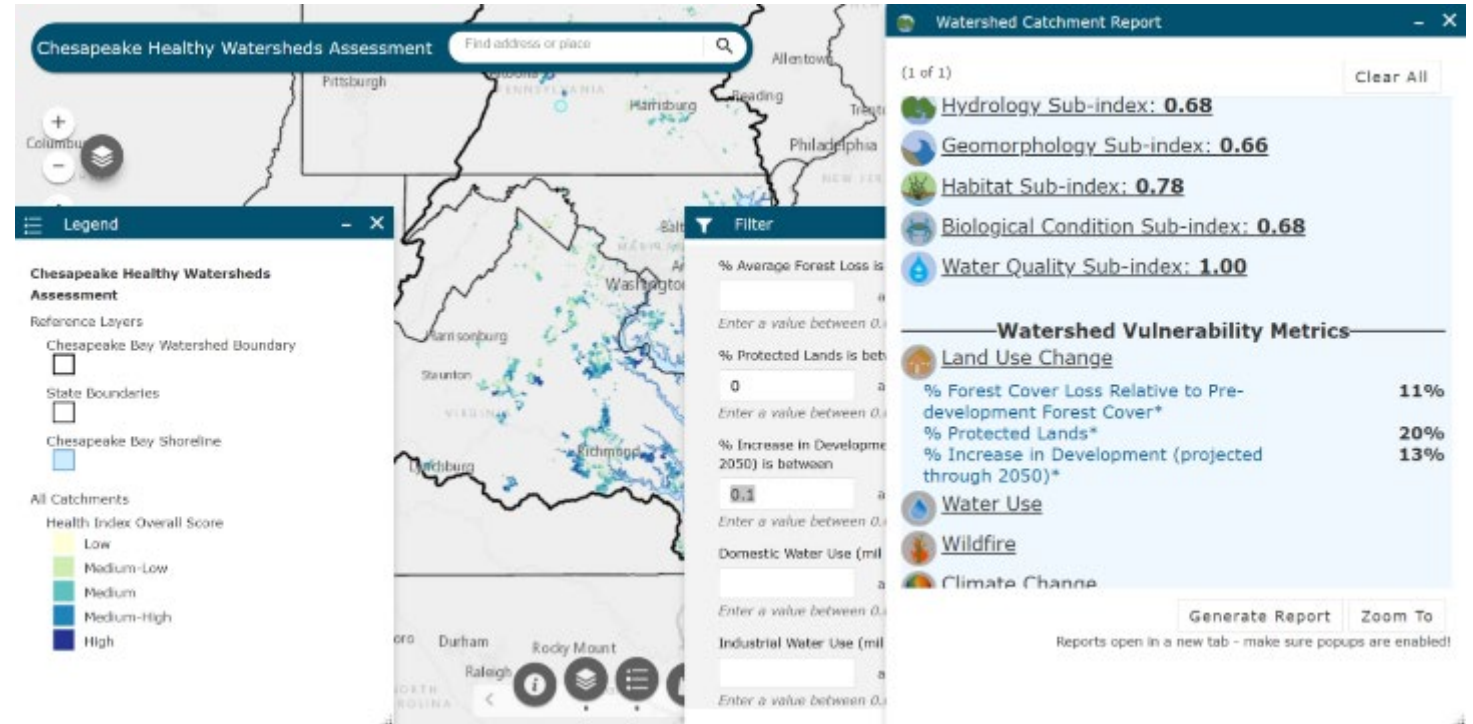
- Smart growth network to help with conversations about development?

**4.3: Facilitate equitable and inclusive land protection financing.**

- Is there a role for BIL funding that could be carved out to support ongoing protected lands work?
- There is new money out there for conservation from the IIJA

## Management Approach 1: Tracking Healthy Waters and Watersheds - Prioritize protection (action 1.3):

- Assess protected status of SIHW using new 2022 waters and watersheds and 2020 protected lands data
- Assist in overseeing the update of the Chesapeake Conservation Partnership Priority Habitat conservation dataset (scoping project)
- Investigate additional threats to high-valued lands using best available data related to development pressure and forest, farmland and wetland conversion utilizing the results of the Land Use Methods and Metrics Outcome as well as the CHWA (pending LUMM rates of conversion)



# USGS Science priorities and others

Enhance use of existing tools, or innovative approaches, to inform expansion of land protection in the watershed. Tools to consider include the upcoming release of Healthy Watersheds Assessment 2.0, USGS Chesapeake Land-Change Model forecasts, and better coordination with information available in the USGS American Conservation and Stewardship Atlas. Consider inclusion of new data sets into the CCP Atlas or targeting portal being developed by USGS.

Maryland is creating a new statewide Land Preservation and Recreation Plan

# Potential Financing and Federal Coordination

America the Beautiful Initiative with its 30X30 goal - advancing healthy watersheds for long term conservation protection as jurisdictions look toward conserving 30% of the watershed by 2030?

Infrastructure Investment and Jobs Act Money

Other funding?