


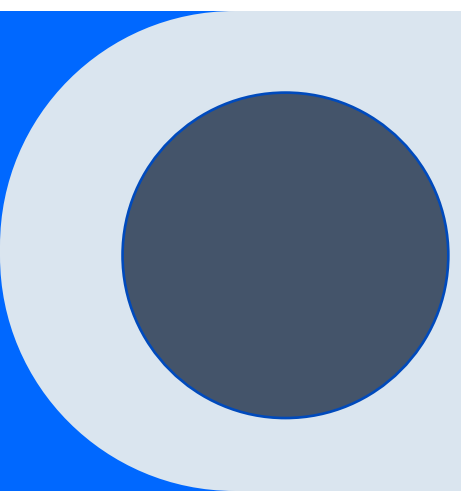


Assessment of Tier II Waters in Maryland and Opportunities related to Targeting and Funding

Sophie Waterman, CRC

HWGIT June Meeting

June 12, 2023



Content

1

Background

3

**Targeting/
Other Uses**

2

**Assessing
Vulnerability**

4

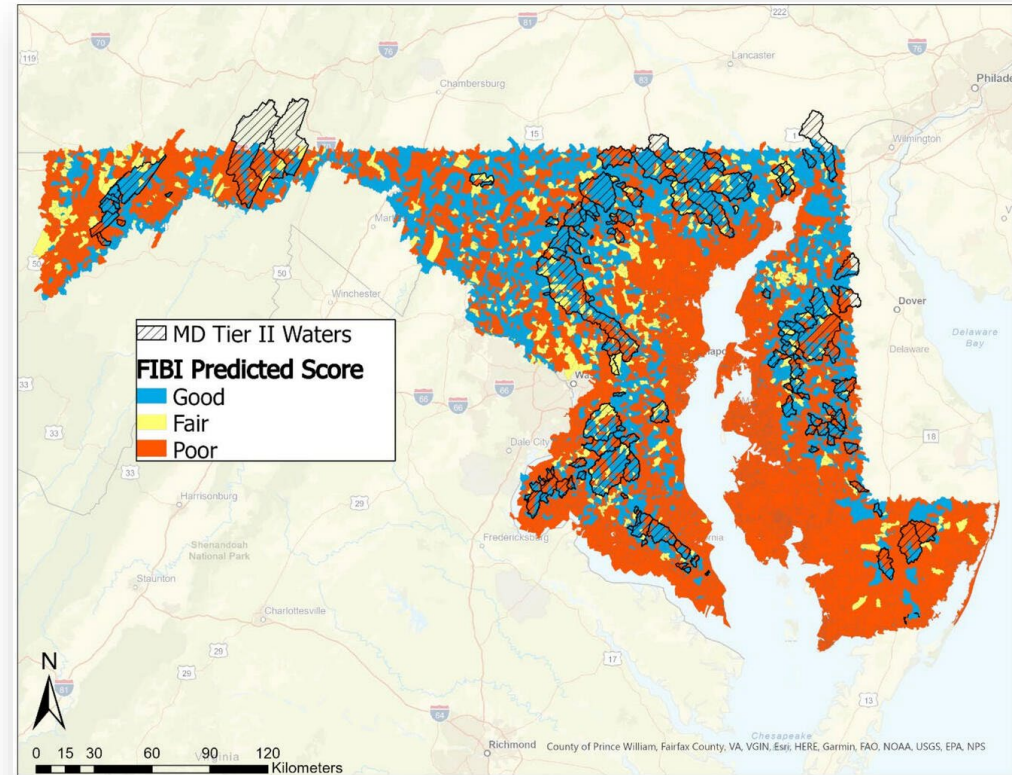
Next Steps

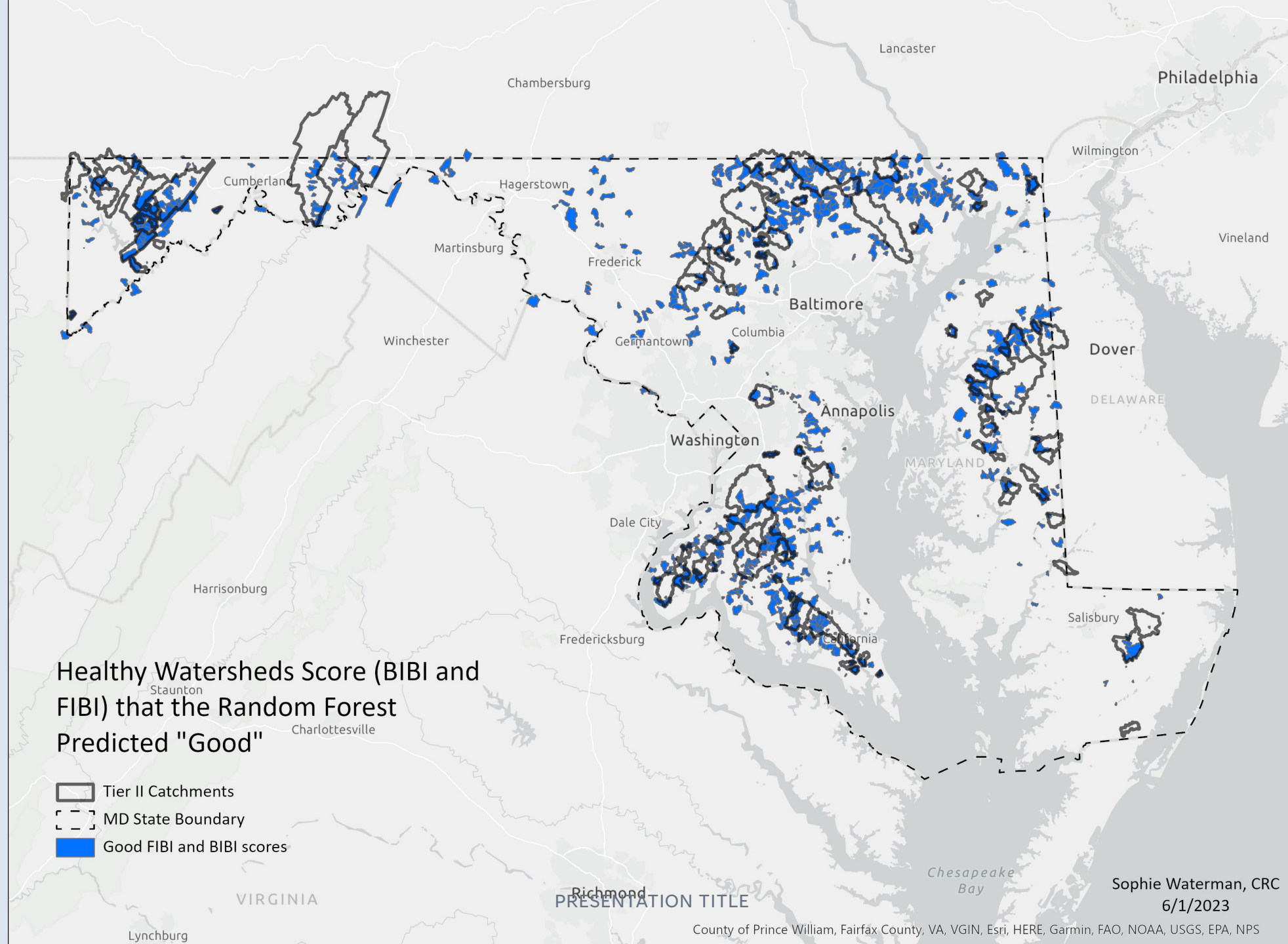
Background



Maryland Healthy Watershed Assessment

- Development of the MDWHA afforded the opportunity to evaluate the predictive ability of watershed metrics to predict watershed health.
- Uses data from the Maryland Biological Stream Survey (MBSS) as response variables.
- Both the fish (FIBI) and benthic (BIBI) indices provide assessments of stream health and are calibrated to reference conditions for Maryland streams.





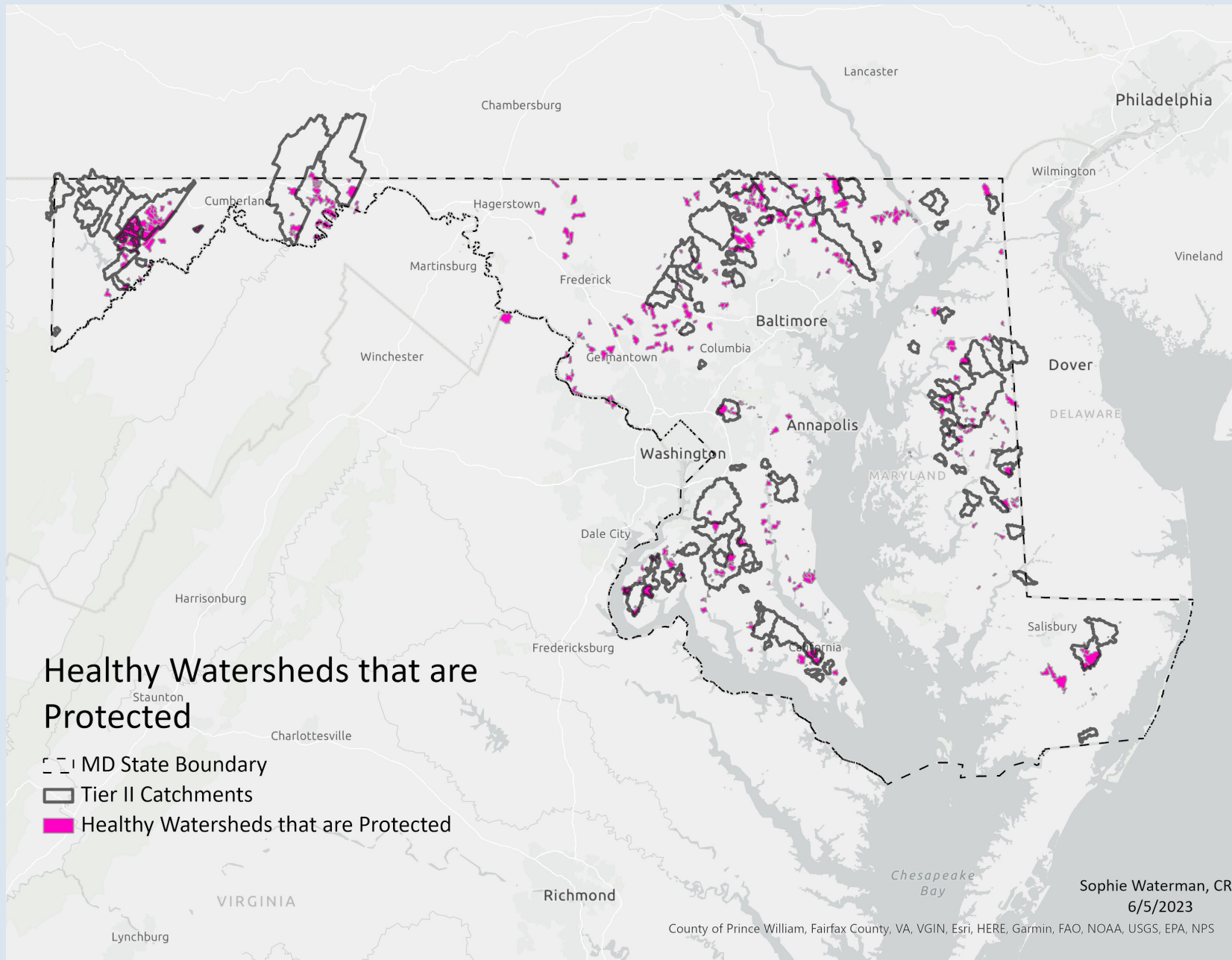
Sophie Waterman, CRC
6/1/2023

County of Prince William, Fairfax County, VA, VGIN, Esri, HERE, Garmin, FAO, NOAA, USGS, EPA, NPS

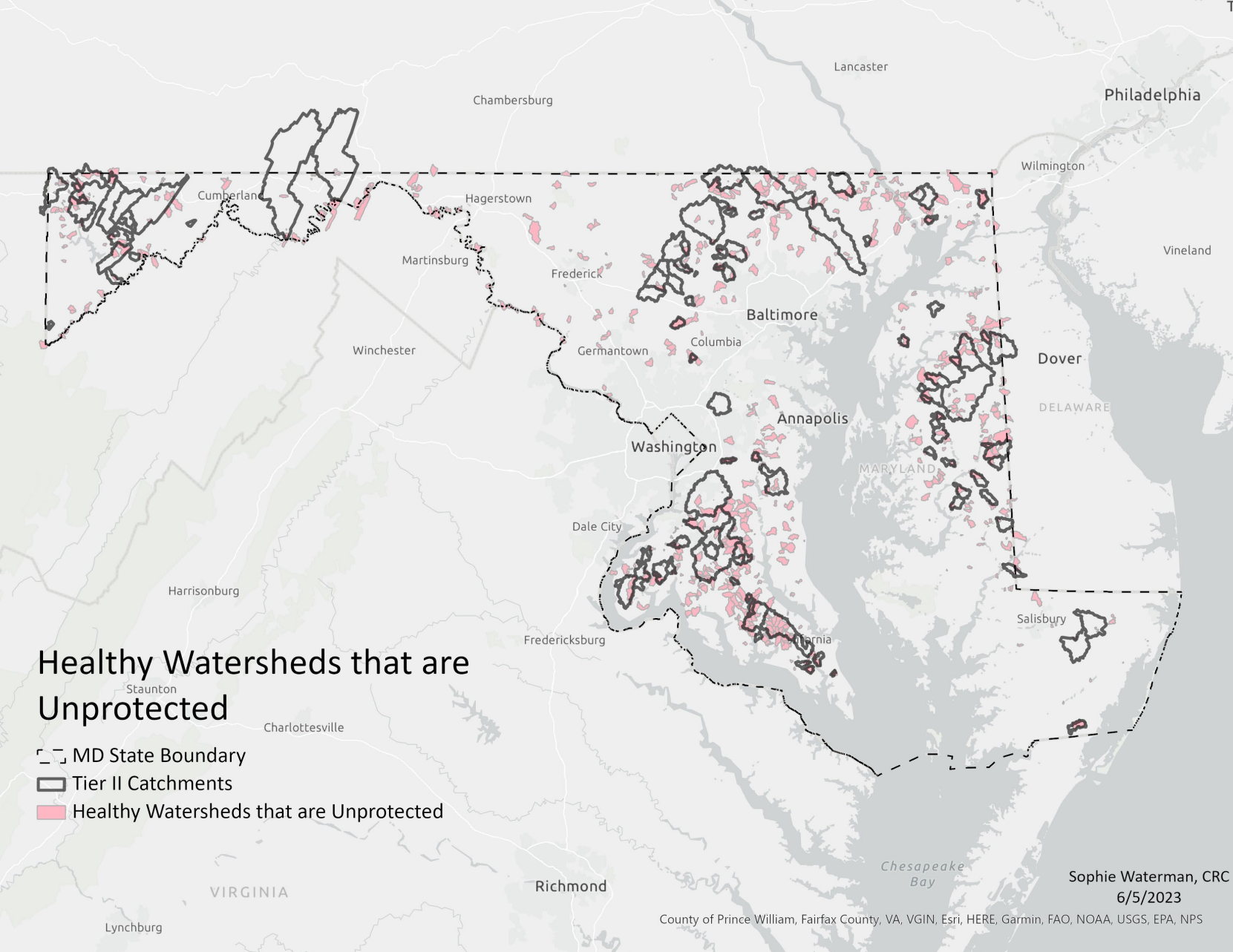
Assessing Vulnerability



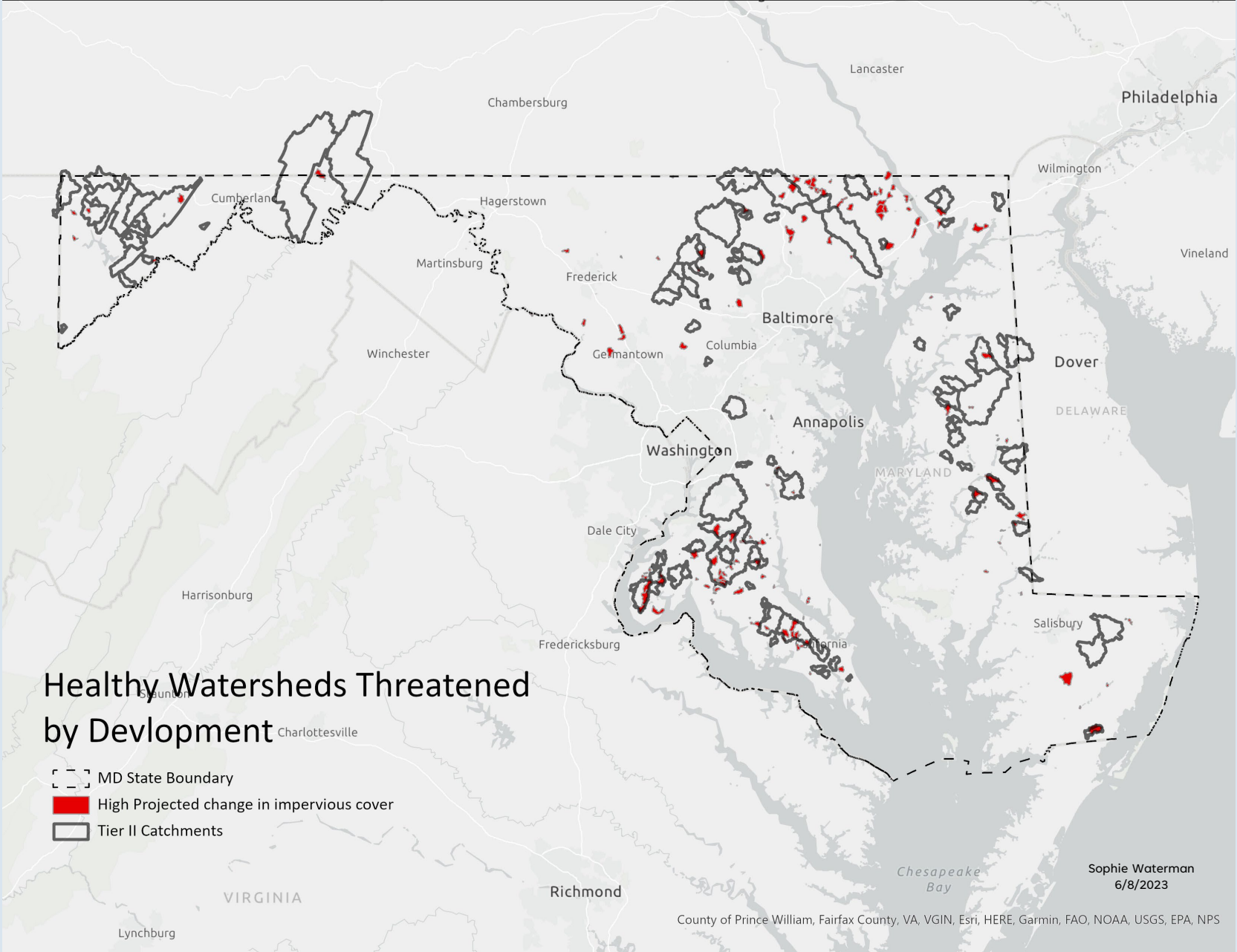
Healthy Watersheds that are Protected



Healthy Watersheds with Low Protection



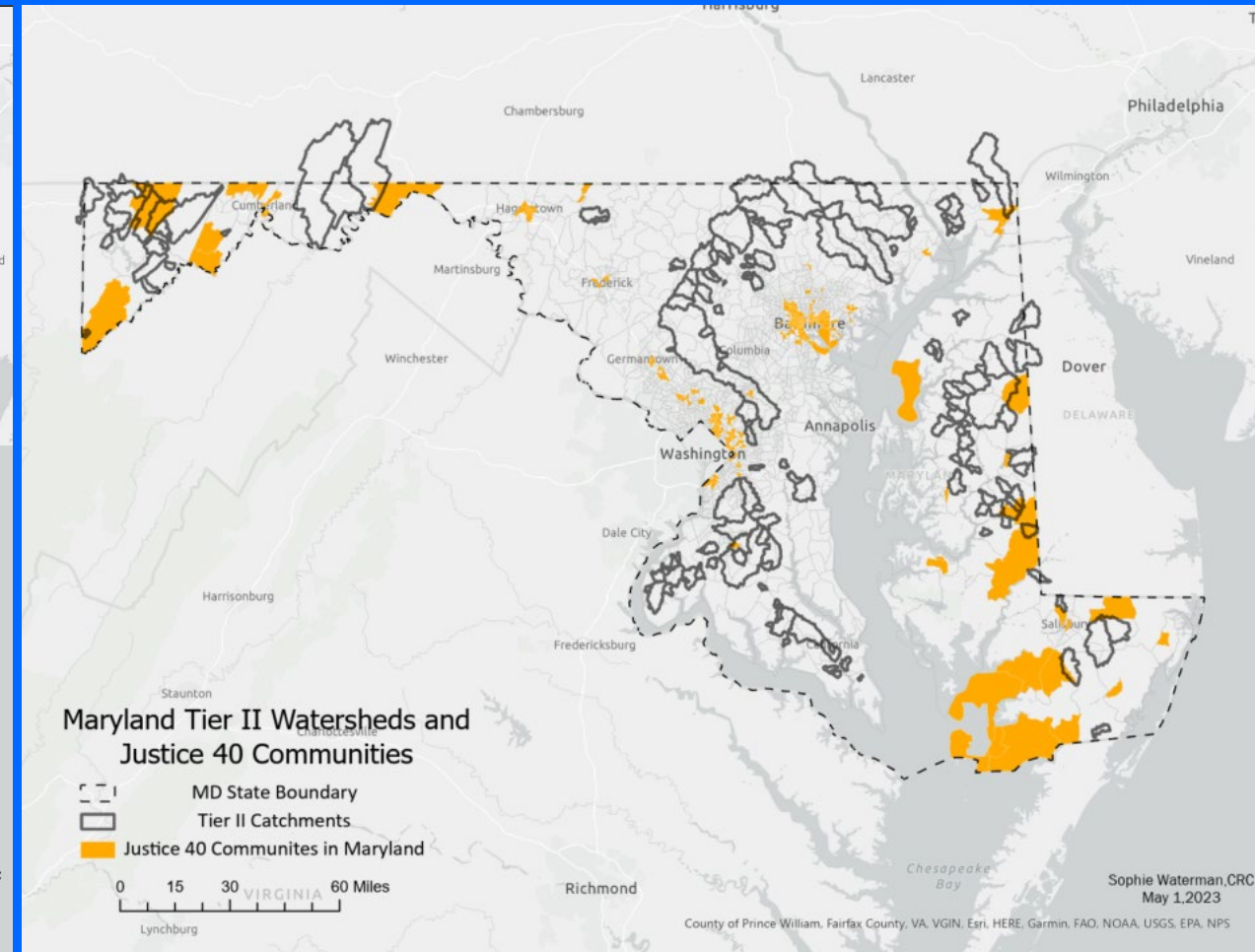
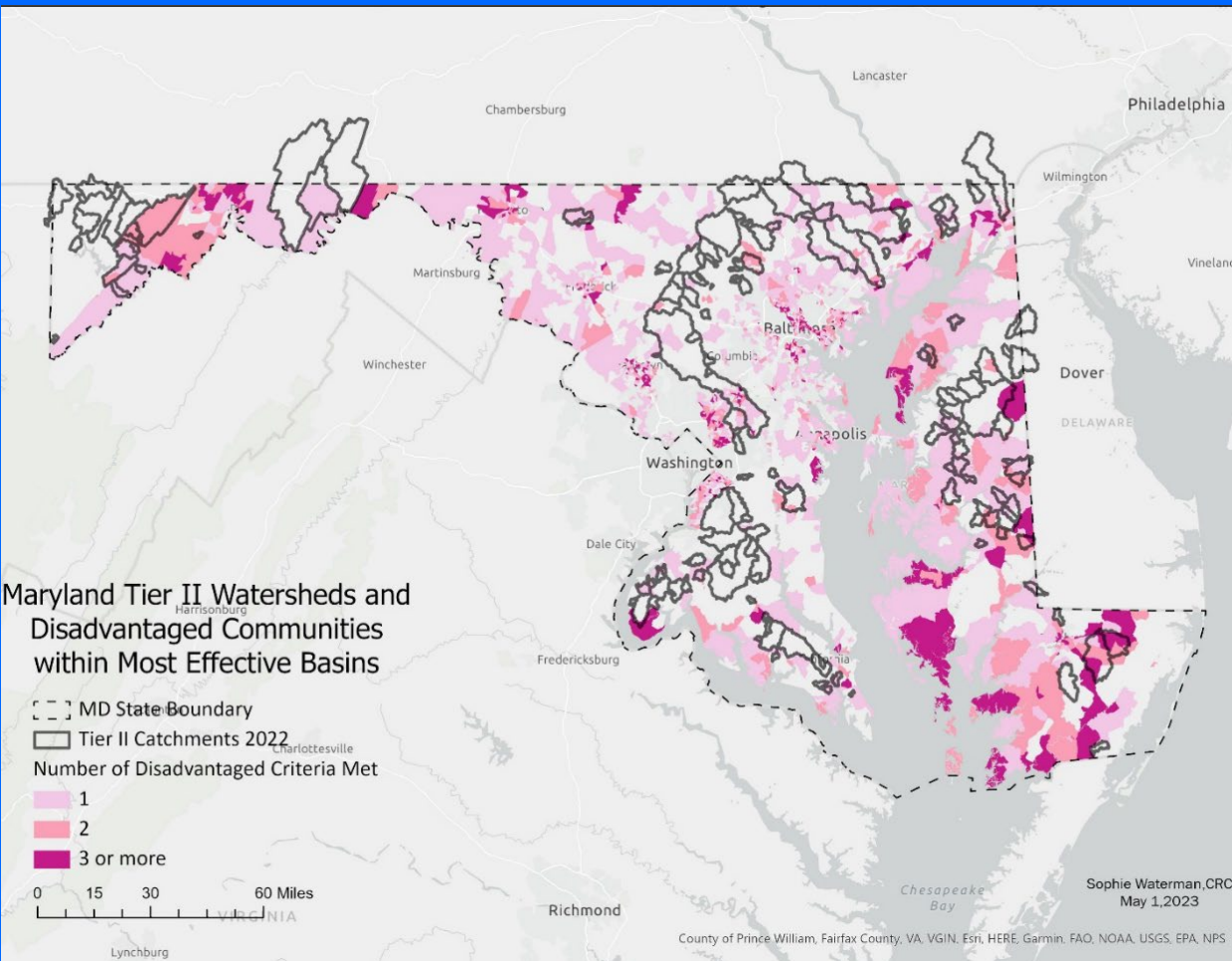
Healthy Watersheds Threatened by Development



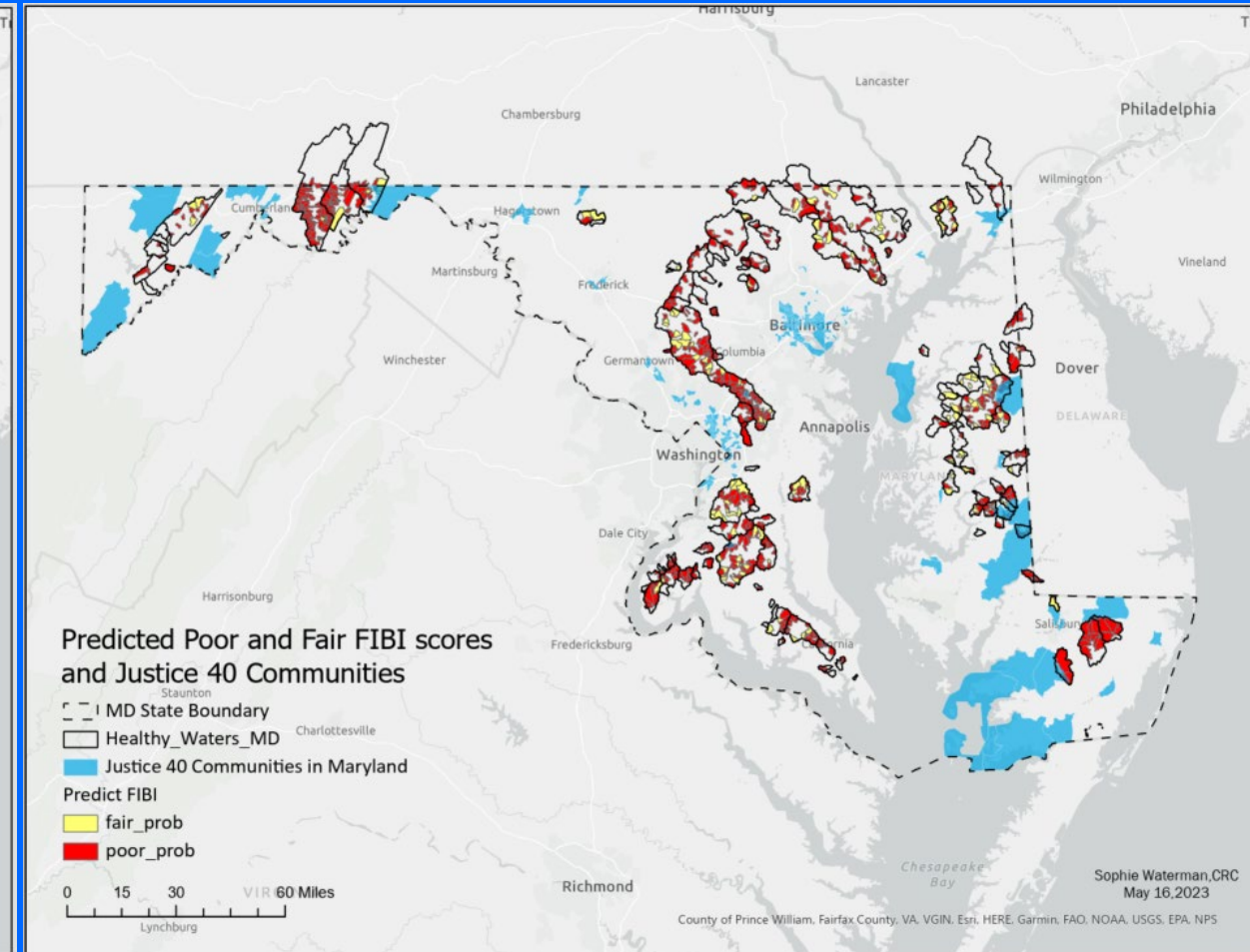
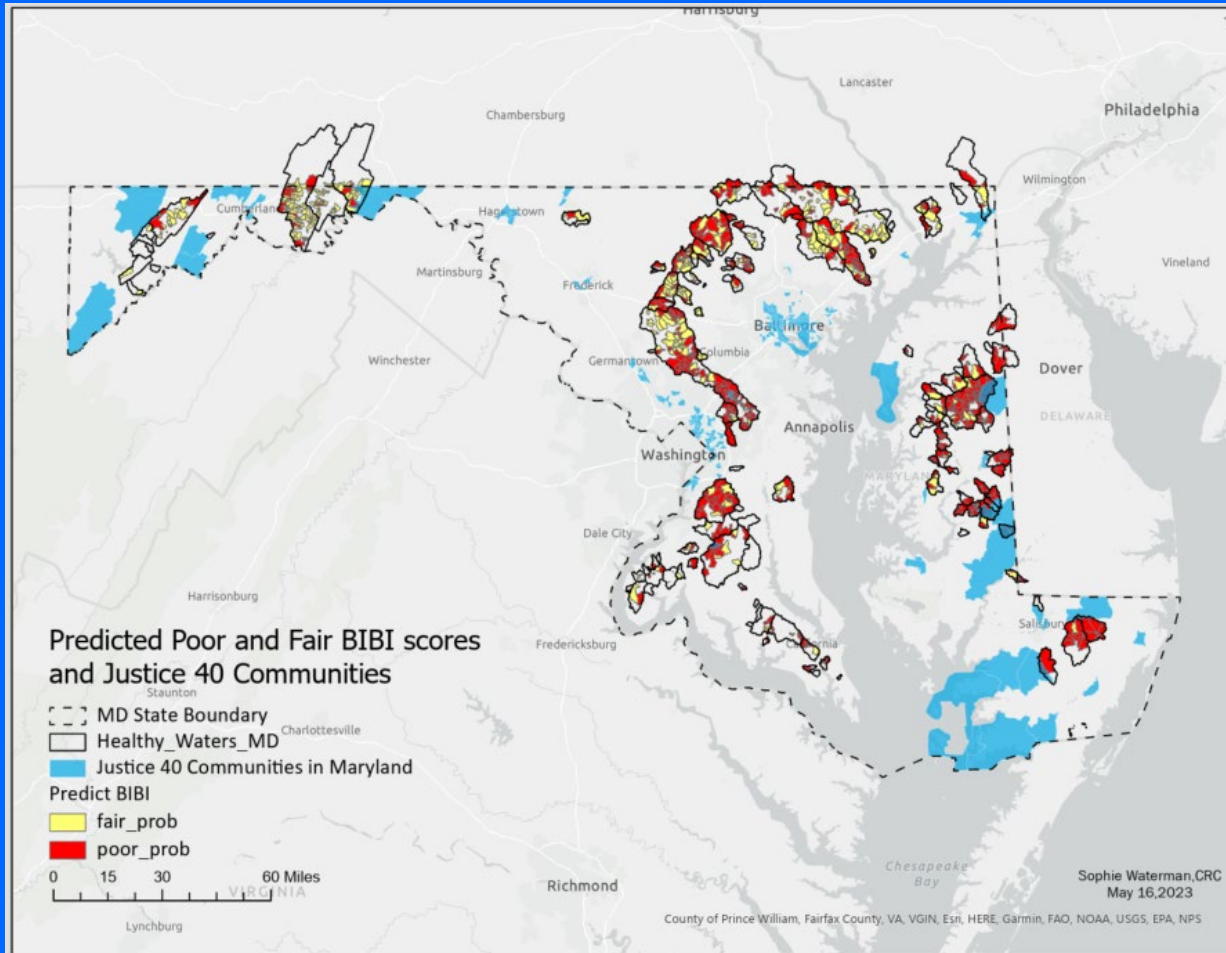
Targeting/ Other Uses



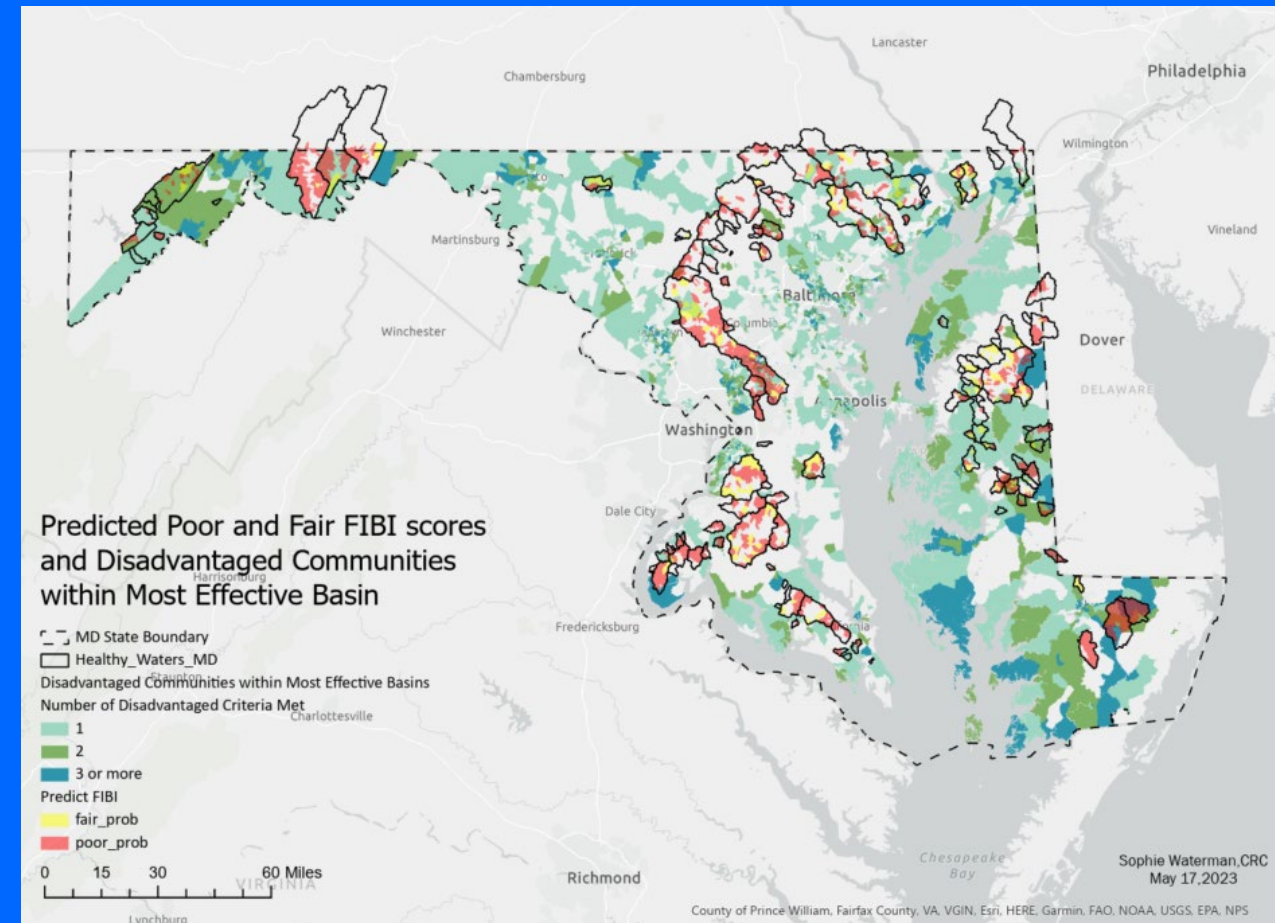
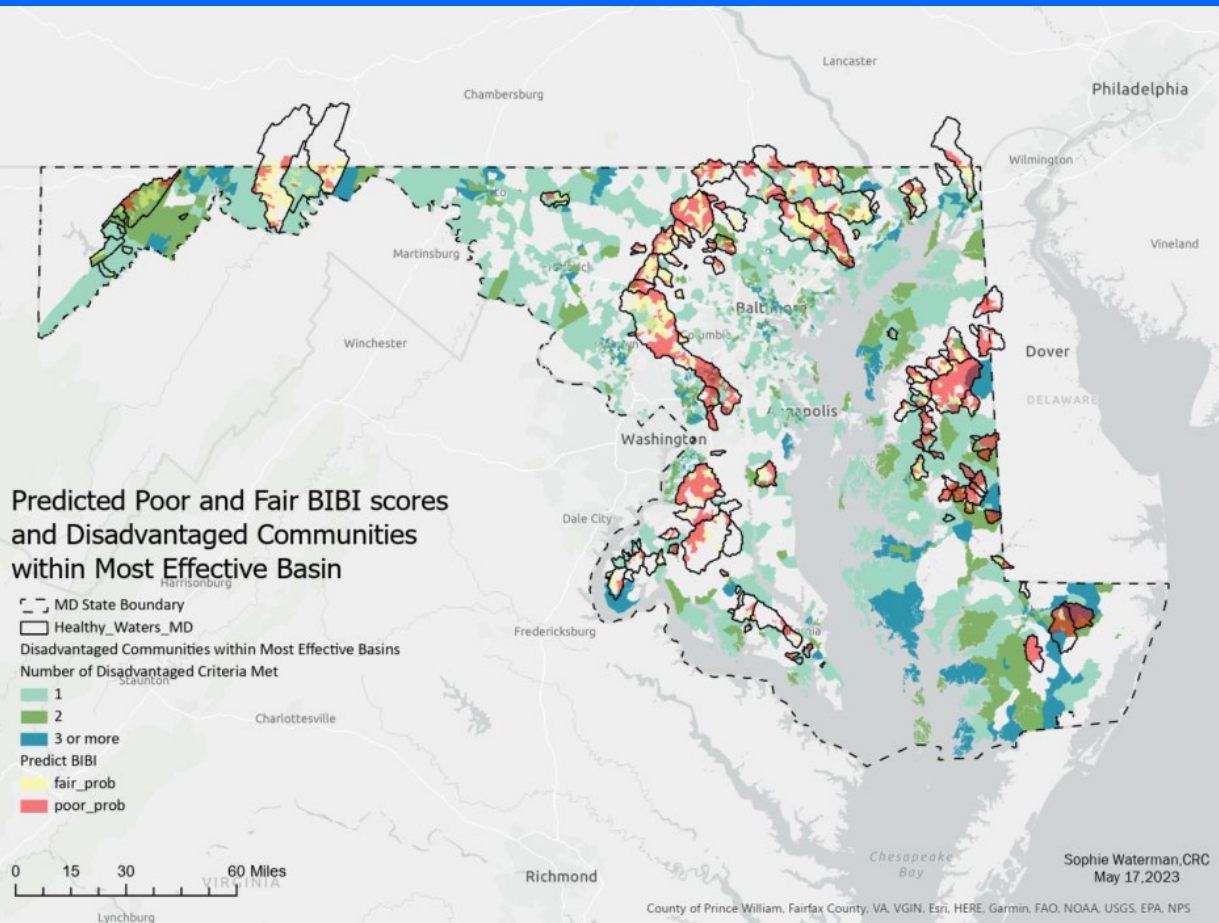
Most Effective Basins and Justice 40



Targeting using MDHWA and J40



Targeting using MDHWA and MEB



A black bird is perched on a branch of a tree with green leaves and small white flowers. The background is a clear blue sky. The text "Next Steps" is overlaid on the left side of the image.

Next Steps

What Next?

- Comparing healthy watersheds and disadvantaged communities.
- White paper
- Asking other questions and finding the answer from the data
- HWGIT Input