



Black Duck Outcome

Ben Lewis, VA DGIF
Black Duck Action Team Lead

Through the Chesapeake Bay Watershed Agreement, the Chesapeake Bay Program has committed to...



Goal: Vital Habitats Goal

Outcome: *By 2025, restore, enhance, and preserve wetland habitats that support a wintering population of 100,000 black ducks, a species representative of the health of the tidal marshes across the watershed.*

Why Black Ducks?



Photos USFWS



Healthy Watersheds

- Less Shoreline Disturbance
- Good Water Quality
- Climate Resiliency

Where there are
Black Ducks,
there are...

Healthy Habitats

- Wetlands
- Fish Habitat
- Bay Grasses

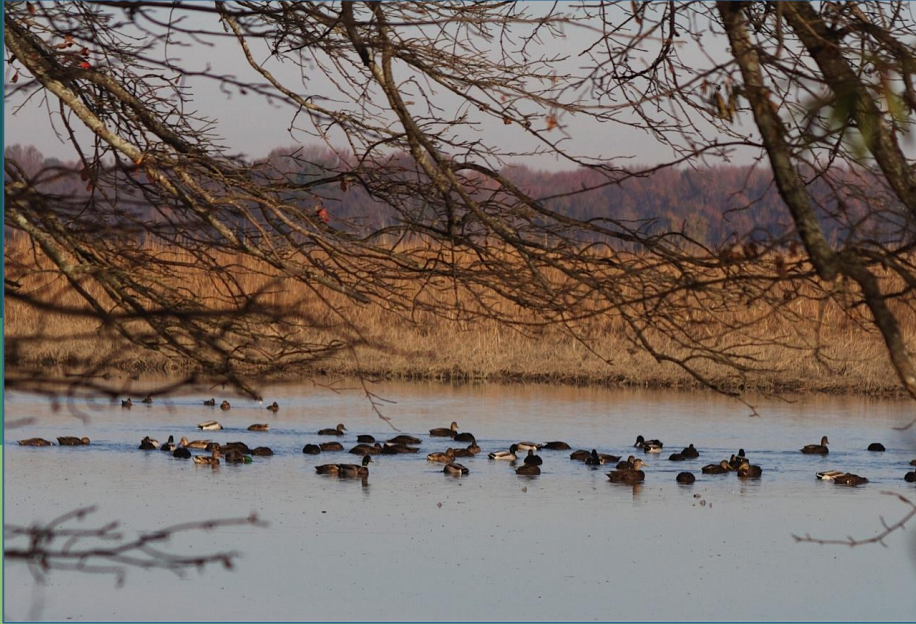
Baseline and Current Condition

- North American Waterfowl Management Plan (NAWMP) continental population goal of 640,000 Black Ducks
- Estimated that the CB watershed could support 100,000
- Mid-Winter Survey
 - 2007-2009: 37,158
 - 2009-2011: 47,269
 - 2011-2013: 41,907
 - 2012-2014: 48,828
 - 2013-2015: 51,332





What We Want



Support in applying the latest science to inform new habitat based Black Duck Outcome indicator

- Technical assistance with establishing a new baseline, acreage targets
- Assistance with Decision Support Tool outreach to decision makers
- Assistance with encouraging funding partners to prioritize use of Decision Support Tool
- Encouragement of strong partner coordination

1

Setting the Stage:

What are our assumptions?



Logic Behind Our Outcome

Following the Decision Framework:

Factors Influencing

- Habitat Degradation
- Scientific Research
- Technical Understanding / Implementation

Current Efforts and Gaps

- Location of opportunities for Habitat Conservation
- Need for Technical Assistance
- Scientific Research
- Carrying Capacity and Bioenergetics Modeling

Management Approaches

- Support Black Duck Habitat
 - Restoration
 - Enhancement and Management
 - Protection
- Other Conservation Actions Benefiting Waterfowl Habitat

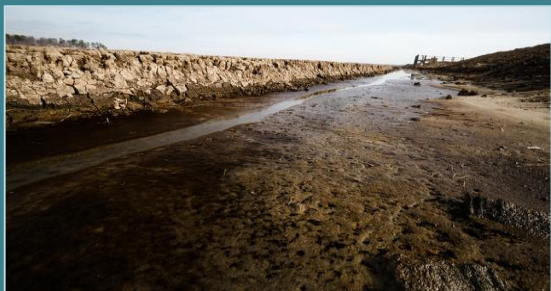
2

Progress:

Are we doing what we said we would do?

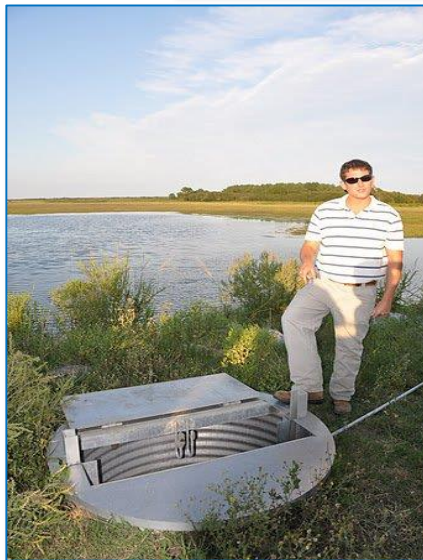


What is our progress?



Supporting Wetland Restoration, Enhancement, and Conservation Work

- NGO's
- States/Jurisdictions
- Federal Agencies





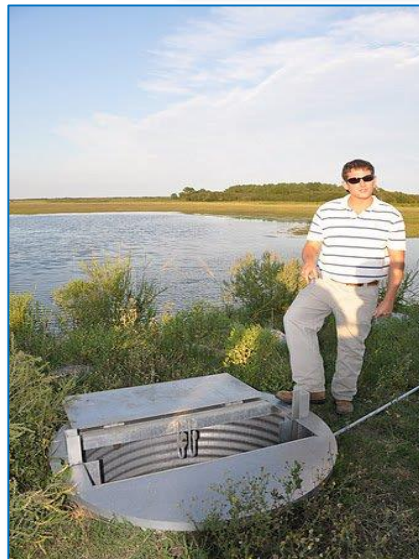
What is our progress?



GIT Funding

- Funding for NRCS Working Lands for Wildlife Technical Assistance Position

- Funding to complete Black Duck Decision Support Tool





What is our progress?

- Better science and tools to target habitat conservation and restoration
- Increased landowner outreach capacity
- Cross-outcome benefits (wetlands, climate change, shorelines, SAV, etc.)



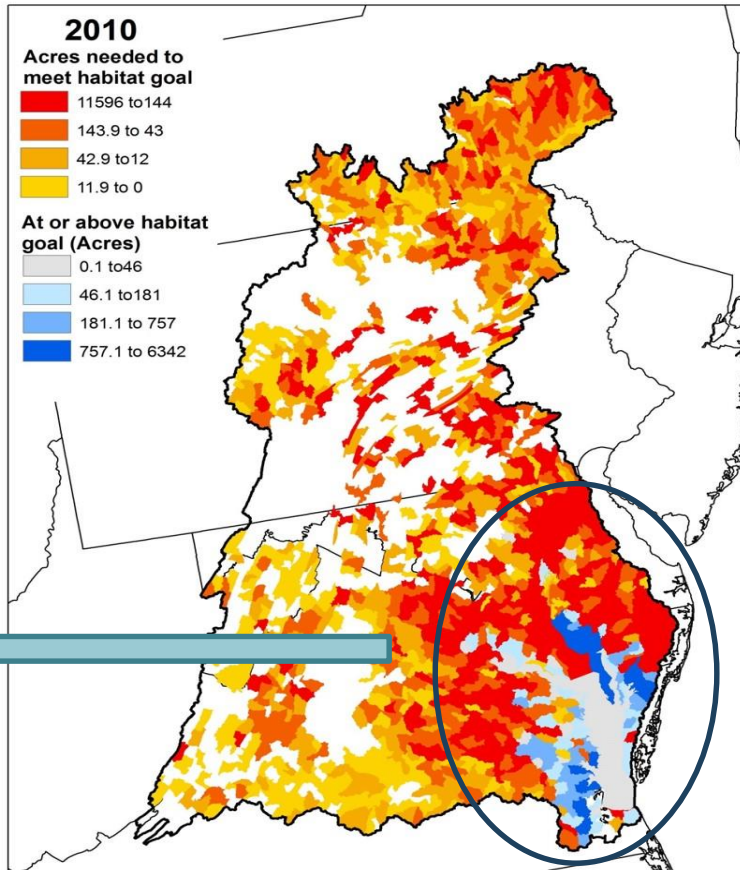
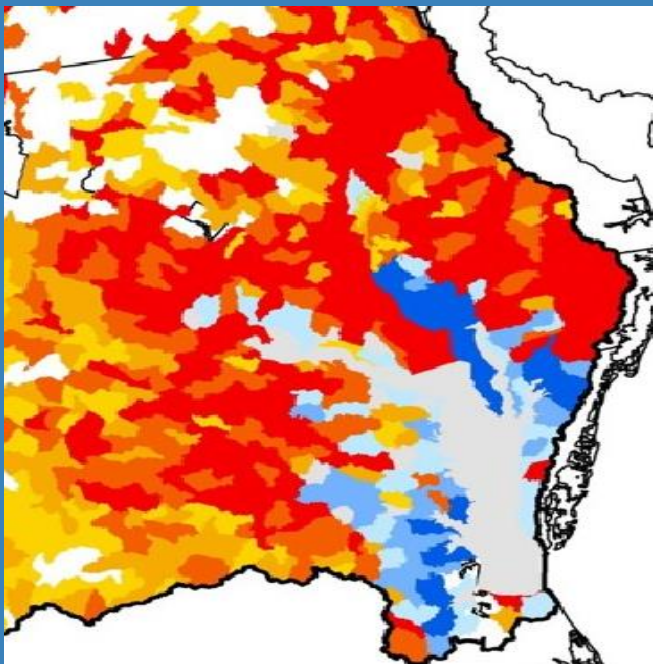
Bioenergetics model and Black Duck habitat needs under future landscape condition maps complete.



Further evidence of SAV as important Black Duck food source.

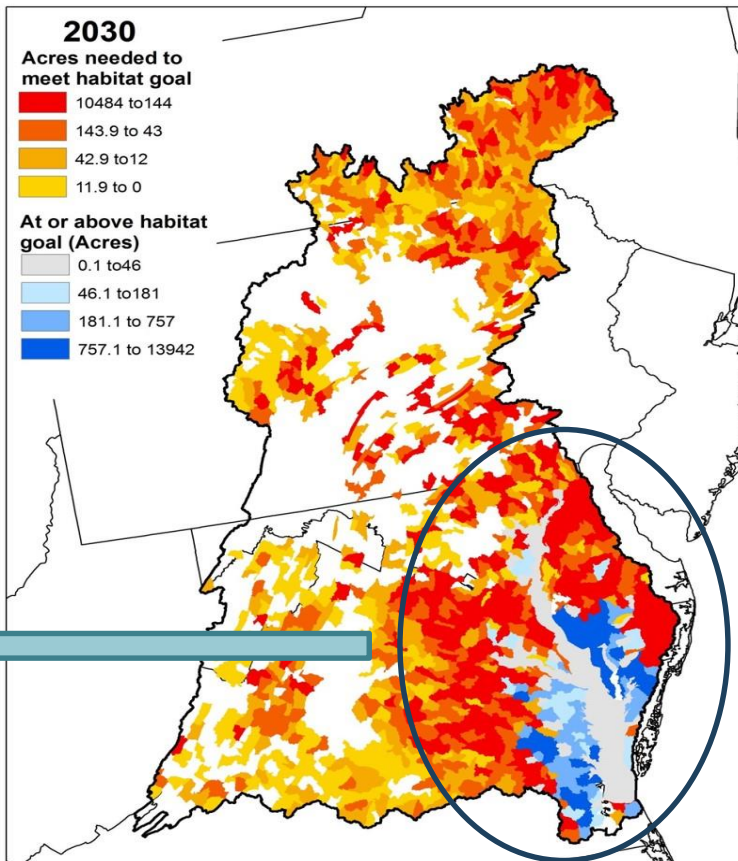
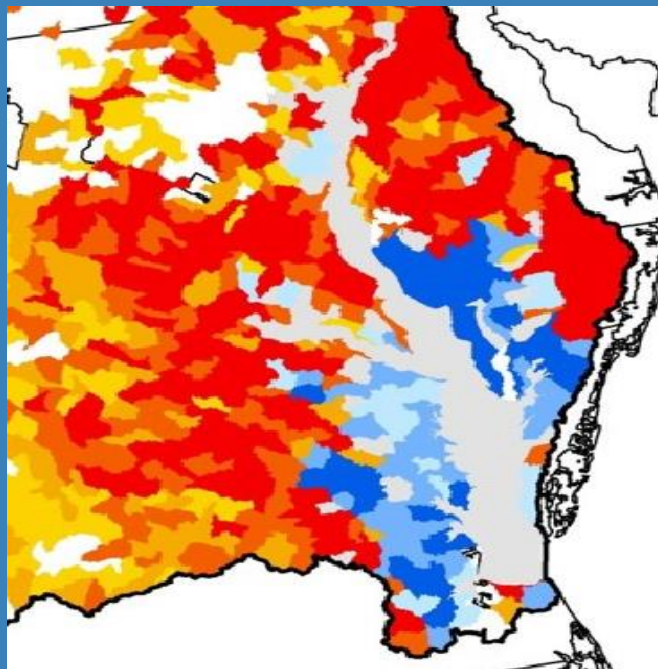


Black Duck Habitat Needs Under Future Landscape Conditions



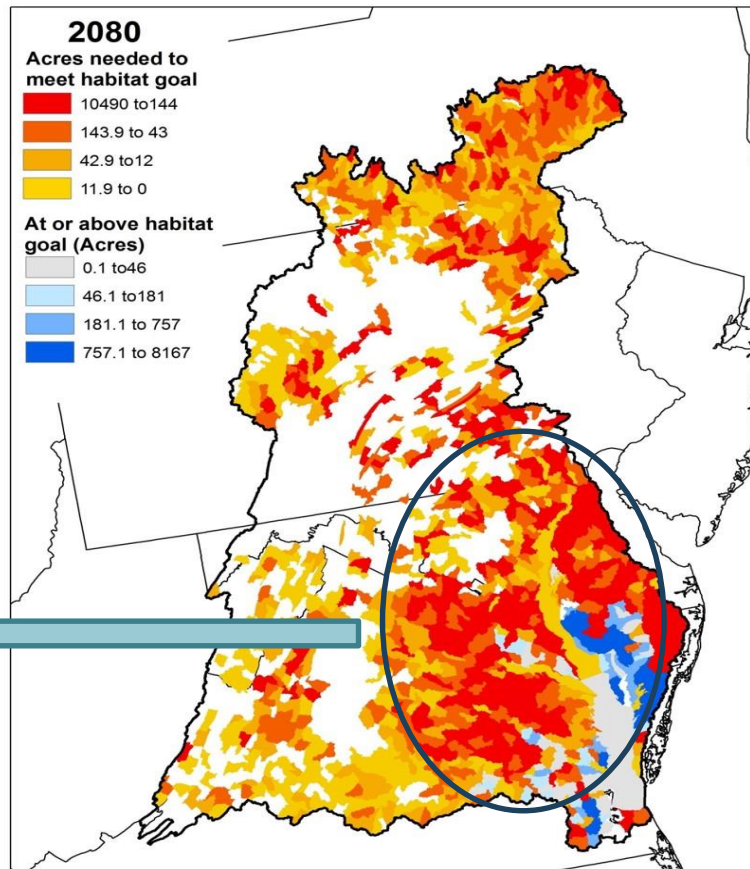
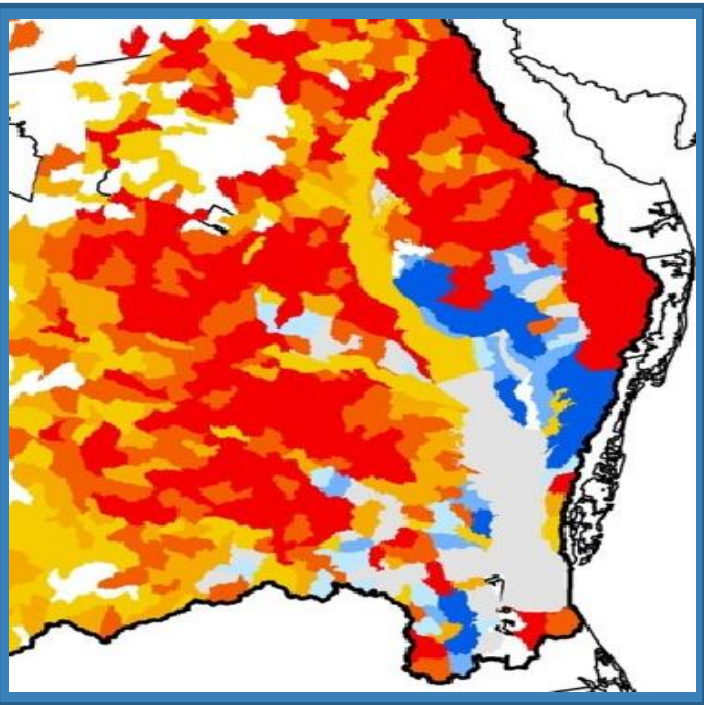


Black Duck Habitat Needs Under Future Landscape Conditions





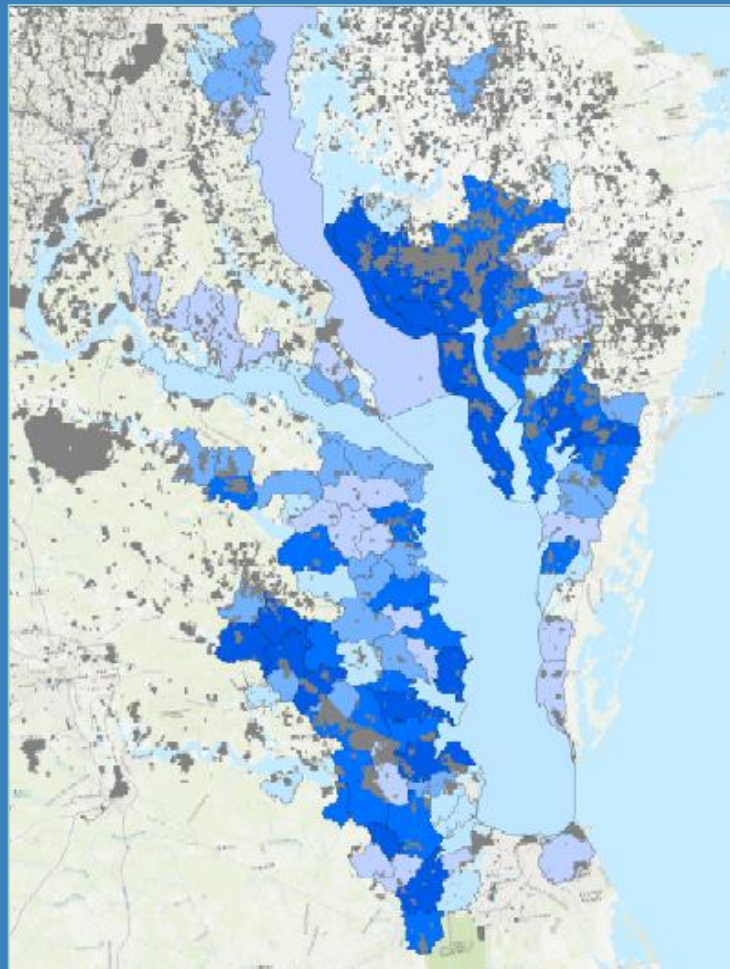
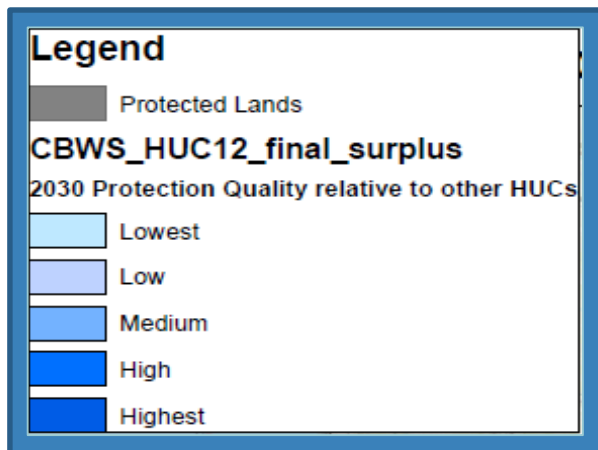
Black Duck Habitat Needs Under Future Landscape Conditions





What is our progress?

Surplus HUC12s and Protected Lands





What is our progress?

CBP Cross-GIT Mapping Project – Black Duck Case Study Output

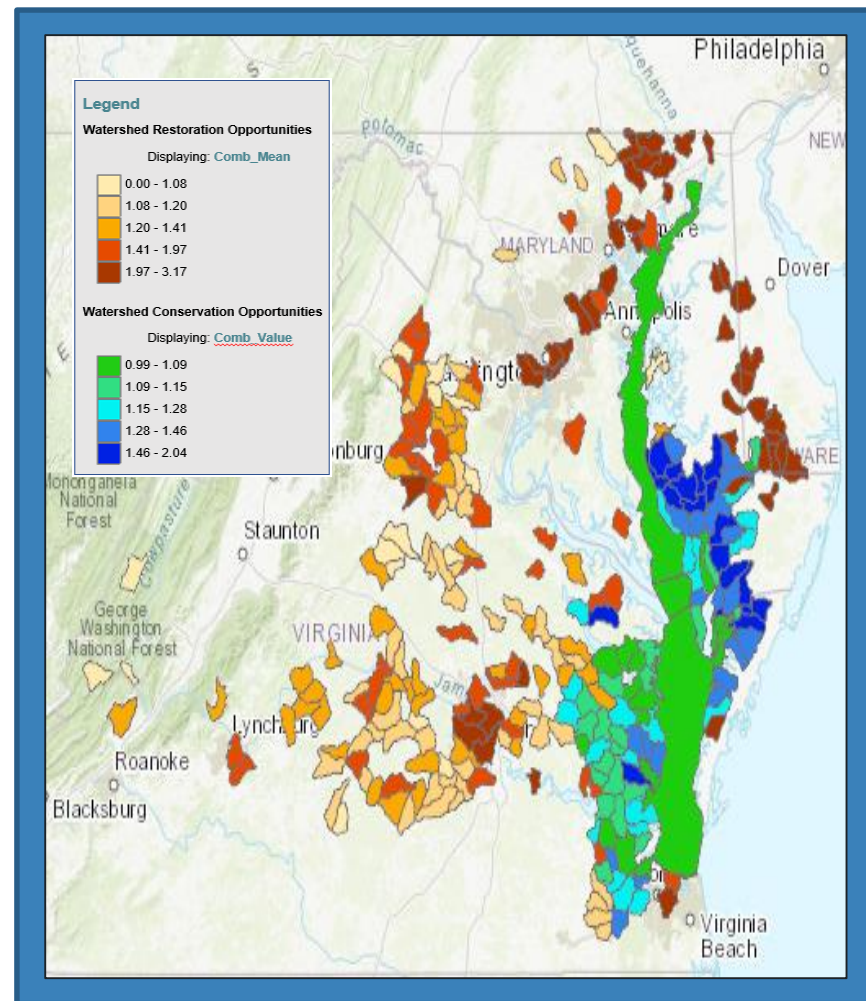
Restoration Metrics –

- Wetlands
- High pollution loading
- Marsh migration
- Low food availability

Conservation Metrics –

- Wetlands
- Healthy Watersheds,
- High food availability
- Marsh Migration

Brown
(restoration) and
Blue
(conservation) =
Higher co-benefit
potential

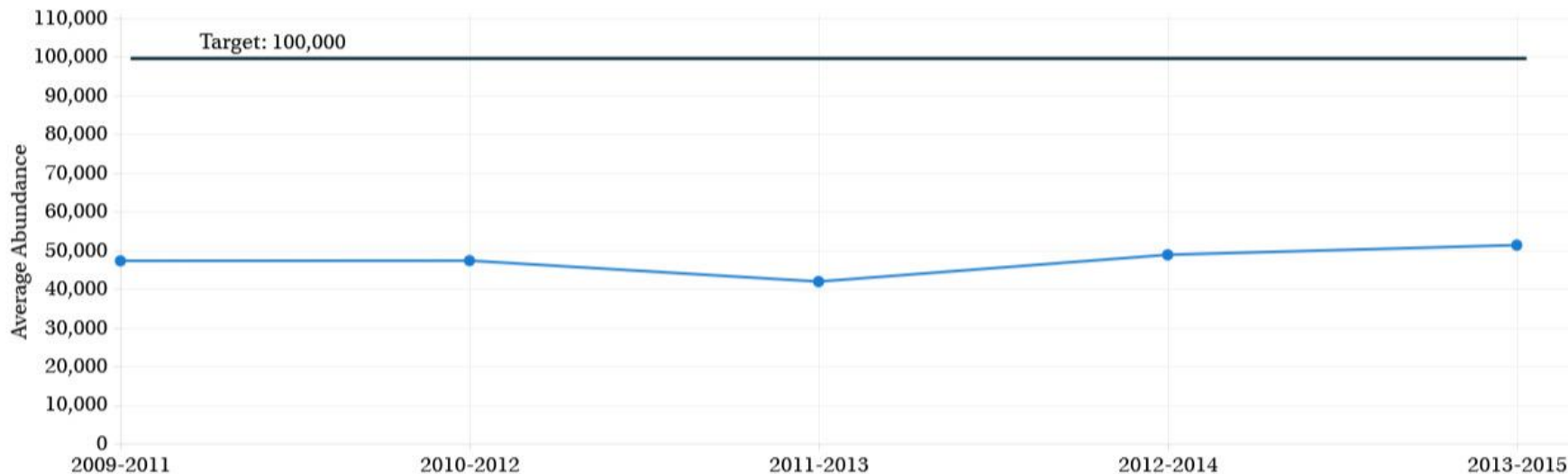




Are we on track?

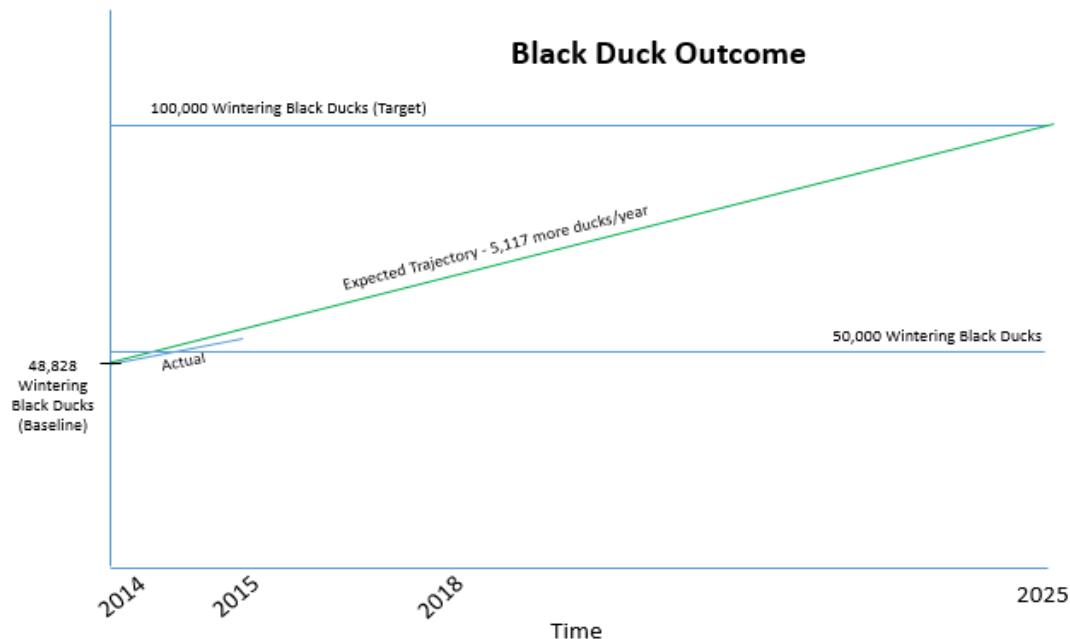
Wintering Black Ducks in the Chesapeake Bay Watershed (2009-2015)

Average black duck abundance as observed during the U.S. Fish and Wildlife Service Mid-winter Waterfowl Survey.





Are we on track?



Indicator Status

- As of 2015, the Black Duck Outcome stands at 51% of it's 100,000 bird goal.
- CBP has not received Watershed population data since 2015 as USFWS no longer maintains survey data.

A **habitat based indicator** would be more reflective of true outcome progress.



Are we on track?



Reach out to Partners to Track Conservation Acres

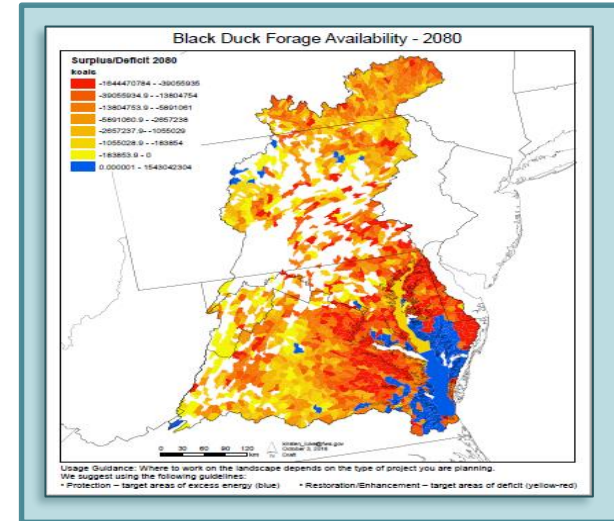
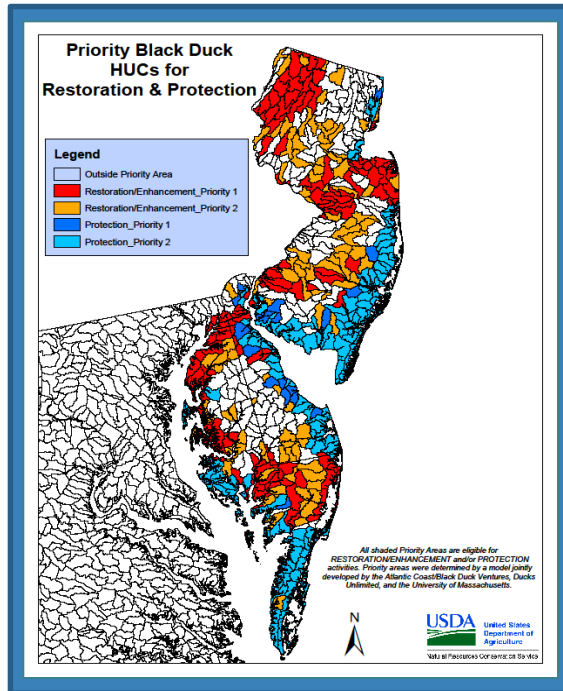


DEPARTMENT OF
**GAME & INLAND
FISHERIES**
CONSERVE. CONNECT. PROTECT.





Analysis: Actions critical to progress thus far



Completion of the bioenergetics model and map outputs



Analysis: Actions critical to future progress



Using the DST maps to determine the best locations for restoration, enhancement, and management of habitat for black ducks.



Determining Acreage Component to Black Duck outcome. I.e. how many acres of habitat would we need to reach our goal

3

Challenges:

Are our actions having the expected effect?



Challenges



Determining wetland, SAV acreage goals for Outcome



Getting the Decision Support Tool map in user friendly format



Conservation partner training and use of Decision Support Tool



Diminished funding and resources (i.e. Mid-winter Survey)

4

Adaptations:

How should we adapt?



Based on what we've learned, we plan to...



Adopt new habitat based Black Duck Outcome indicator using bioenergetics model



Articulate wetland, SAV acreage component to the Black Duck Outcome



Develop a priority list of Sub-watersheds/state for conservation and restoration (25th Percentile Map)



Improve coordination with partners and local agencies

Co-Benefits



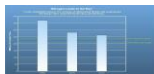
Sustainable Fisheries

- Blue Crab Abundance
- Blue Crab Management
- Oyster
- Forage Fish
- Fish Habitat



Vital Habitats Goal

- Wetlands
- Black Duck
- Stream Health
- Brook Trout
- Fish Passage
- Submerged Aquatic Vegetation (SAV)
- Forest Buffer
- Tree Canopy



Water Quality Goal

- 2017 Watershed Implementation Plans (WIP)
- 2025 WIP
- Water Quality Standards Attainment and Monitoring



Toxic Contaminants Goal

- Toxic Contaminants Research
- Toxic Contaminants Policy and Prevention



Healthy Watersheds Goal

- Healthy Waters



Stewardship Goal

- Citizen Stewardship
- Local Leadership
- Diversity



Land Conservation Goal

- Protected Lands
- Land Use Methods and Metrics Development
- Land Use Options Evaluation



Public Access Goal

- Public Access Site Development



Environmental Literacy Goal

- Student
- Sustainable Schools
- Environmental Literacy Planning



Climate Resiliency Goal

- Monitoring and Assessment
- Adaptation Outcome



What We Want



Support in applying the latest science to inform new habitat based Black Duck Outcome indicator

- Technical assistance with establishing a new baseline, acreage targets
- Assistance with Decision Support Tool outreach to decision makers
- Assistance with encouraging funding partners to prioritize use of Decision Support Tool
- Encouragement of strong partner coordination

Discussion